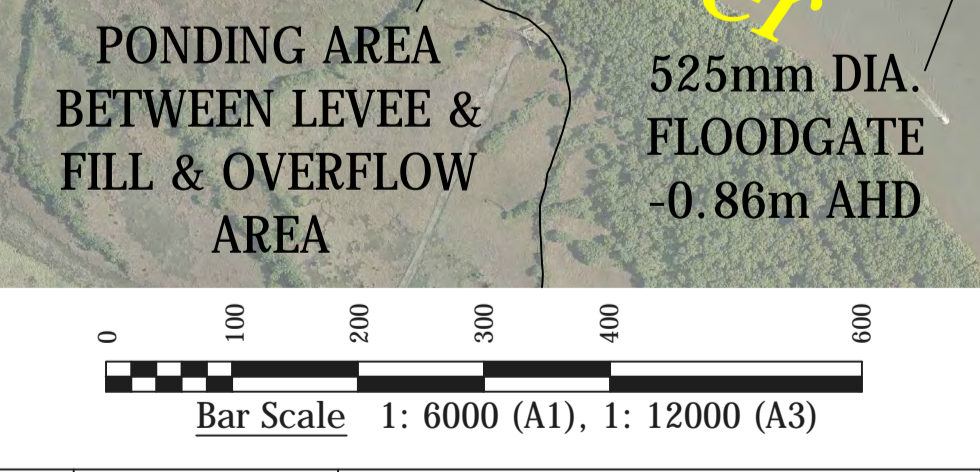
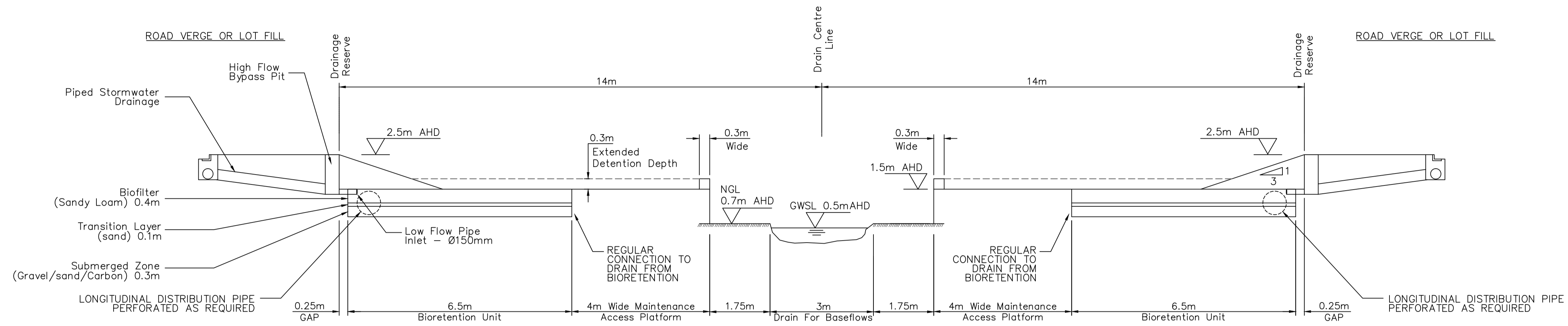


Plot File: N:\37672-Northbank\Draw\37672-DRAIN-CROSS-SECTION-001-B.dwg
Plot Date: 07/02/13 - 08:39
Cad File: N:\37672-Northbank\Draw\37672-DRAIN-CROSS-SECTION-001-B.dwg

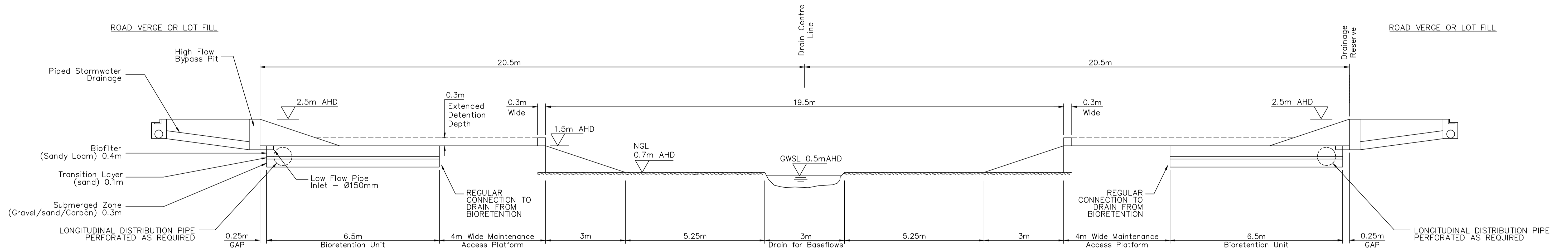


Ver.	Date	Comment
B	6/02/2013	Additional Detail
A	27/11/2012	Issued for Approval

'COPYRIGHT NOTICE'
THIS PLAN AND THE INFORMATION IT CONTAINS ARE COPYRIGHT AND REMAIN THE PROPERTY OF ADW JOHNSON PTY LTD. ADW JOHNSON PTY LTD GRANTS TO THE CLIENT NAMED ON THIS PLAN A LICENSE TO USE THE INFORMATION HEREON FOR THE PURPOSE FOR WHICH WE WERE ENGAGED TO PERFORM THE WORK. USE OF THE PLAN AND INFORMATION IT CONTAINS FOR ANY OTHER PURPOSE IS NOT PERMITTED UNLESS PRIOR WRITTEN APPROVAL HAS BEEN OBTAINED FROM ADW JOHNSON PTY LTD.



SECTION A
TYPICAL
SCALE 1:75



SECTION B
TYPICAL
SCALE 1:75

NOTES:

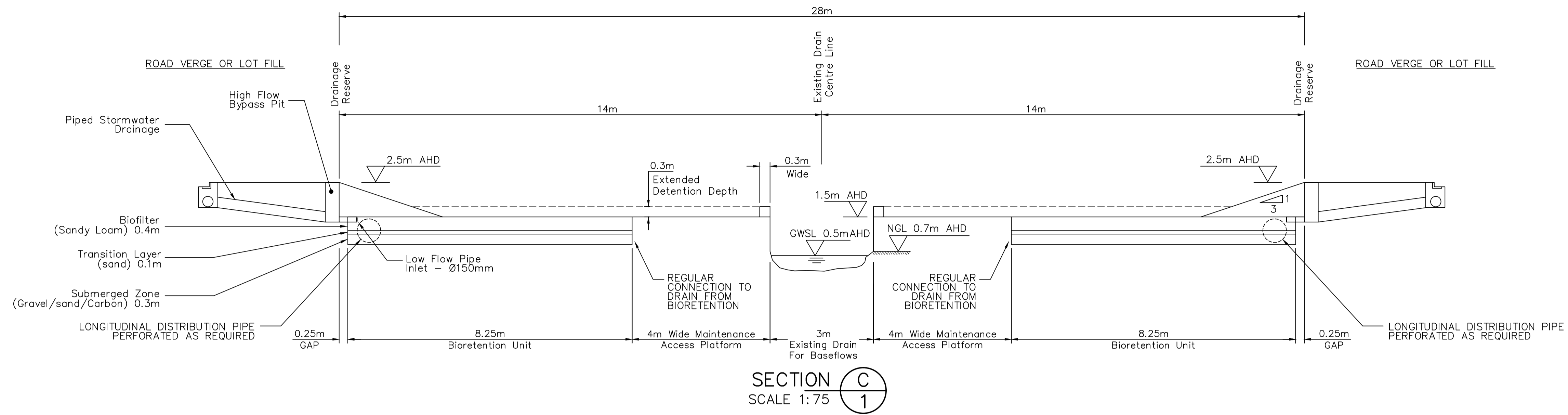
1. ALL BATTERS 1V:3H U.N.O.
2. LEVELS SHOWN ARE INDICATIVE & WILL CHANGE RELATIVE OVER LENGTH FOR RISE IN NATURAL GROUND LEVEL
3. ACCESS TO CHANNEL MAINTENANCE ACCESS FROM ROAD/CULVERT CROSSINGS

GWSL - GROUND WATER SURFACE LEVEL
NGL - NATURAL GROUND LEVEL
AHD - AUSTRALIAN HEIGHT DATUM

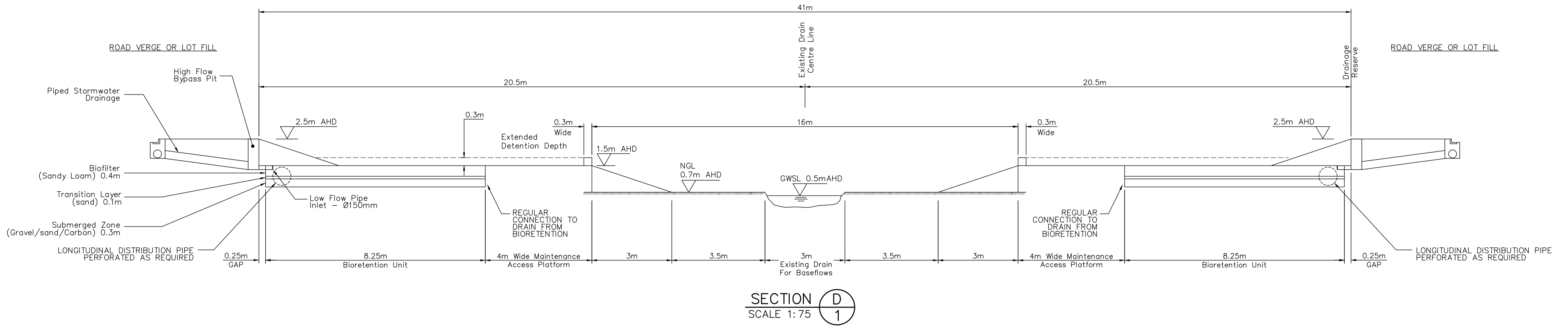
Plot File: N:\37672-Northbank\Draw\37672-DRAIN-CROSS-SECTION-001-B.dwg

Ver.	Date	Comment
B	6/02/2013	Additional Detail
A	27/11/2012	Issued for Approval

"COPYRIGHT NOTICE"
THIS PLAN AND THE INFORMATION IT CONTAINS ARE COPYRIGHT AND REMAIN THE PROPERTY OF ADW JOHNSON PTY LTD. ADW JOHNSON PTY LTD GRANTS TO THE CLIENT NAMED ON THIS PLAN A LICENSE TO USE THE INFORMATION HEREON FOR THE PURPOSE FOR WHICH WE WERE ENGAGED TO PERFORM THE WORK. USE OF THE PLAN AND INFORMATION IT CONTAINS FOR ANY OTHER PURPOSE IS NOT PERMITTED UNLESS PRIOR WRITTEN APPROVAL HAS BEEN OBTAINED FROM ADW JOHNSON PTY LTD.



SECTION C
SCALE 1:75



SECTION D
SCALE 1:75

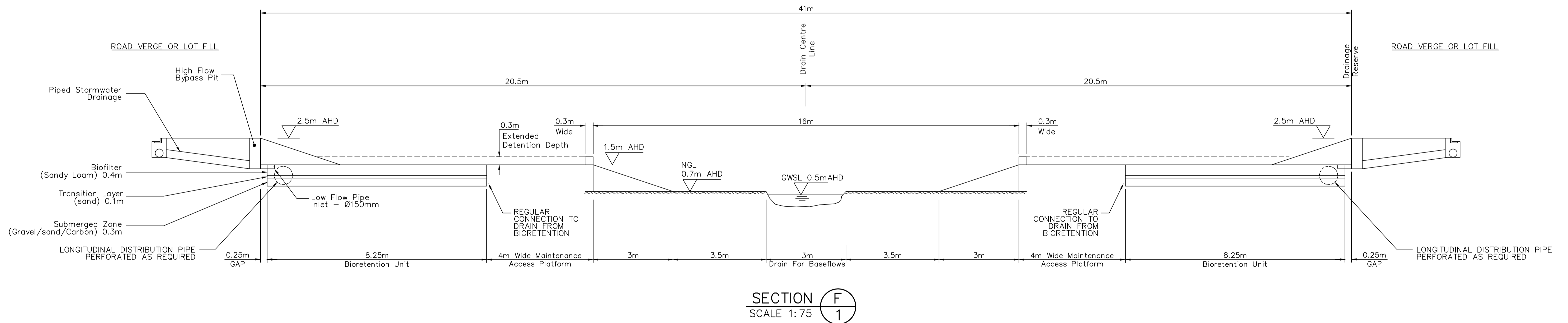
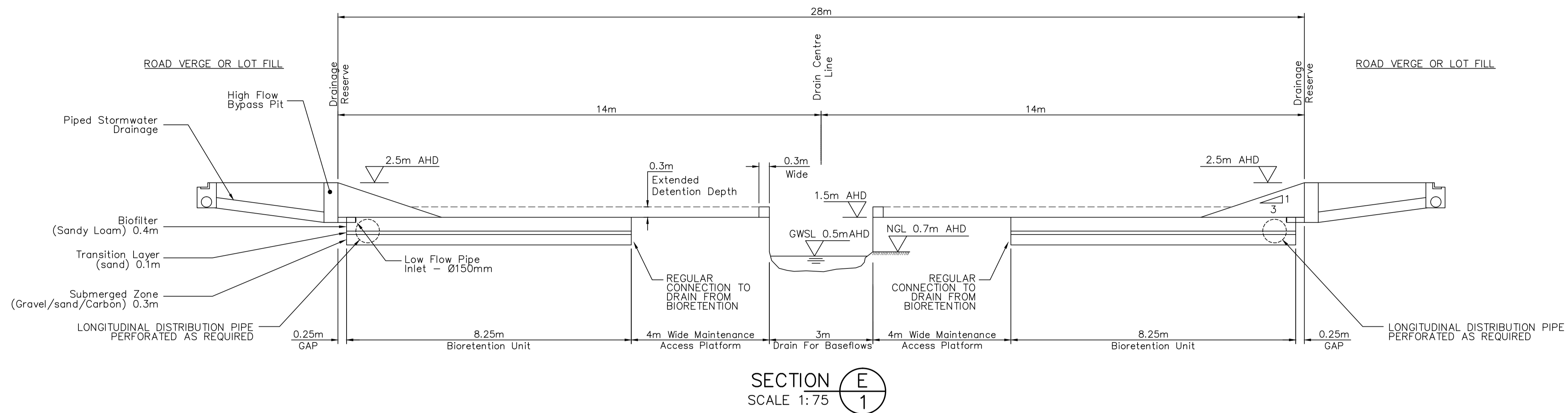
- NOTES:
1. ALL BATTERS 1V:3H U.N.O.
 2. LEVELS SHOWN ARE INDICATIVE & WILL CHANGE RELATIVE OVER LENGTH FOR RISE IN NATURAL GROUND LEVEL
 3. ACCESS TO CHANNEL MAINTENANCE ACCESS FROM ROAD/CULVERT CROSSINGS

GWSL - GROUND WATER SURFACE LEVEL
NGL - NATURAL GROUND LEVEL
AHD - AUSTRALIAN HEIGHT DATUM

Ver.	Date	Comment
B	6/02/2013	Additional Detail
A	27/11/2012	Issued for Approval

COPYRIGHT NOTICE
THIS PLAN AND THE INFORMATION IT CONTAINS ARE COPYRIGHT AND REMAIN THE PROPERTY OF ADW JOHNSON Pty Ltd. ADW JOHNSON Pty Ltd GRANTS TO THE CLIENT NAMED ON THIS PLAN A LICENSE TO USE THE INFORMATION HEREON FOR THE PURPOSE FOR WHICH WE WERE ENGAGED TO PERFORM THE WORK. USE OF THE PLAN AND INFORMATION IT CONTAINS FOR ANY OTHER PURPOSE IS NOT PERMITTED UNLESS PRIOR WRITTEN APPROVAL HAS BEEN OBTAINED FROM ADW JOHNSON Pty Ltd.

Plotted By: malc Cad File: N:\37672-Northbank\Drawings\37672-DRAIN-CROSS-SECTION-001-B.dwg



NOTES:

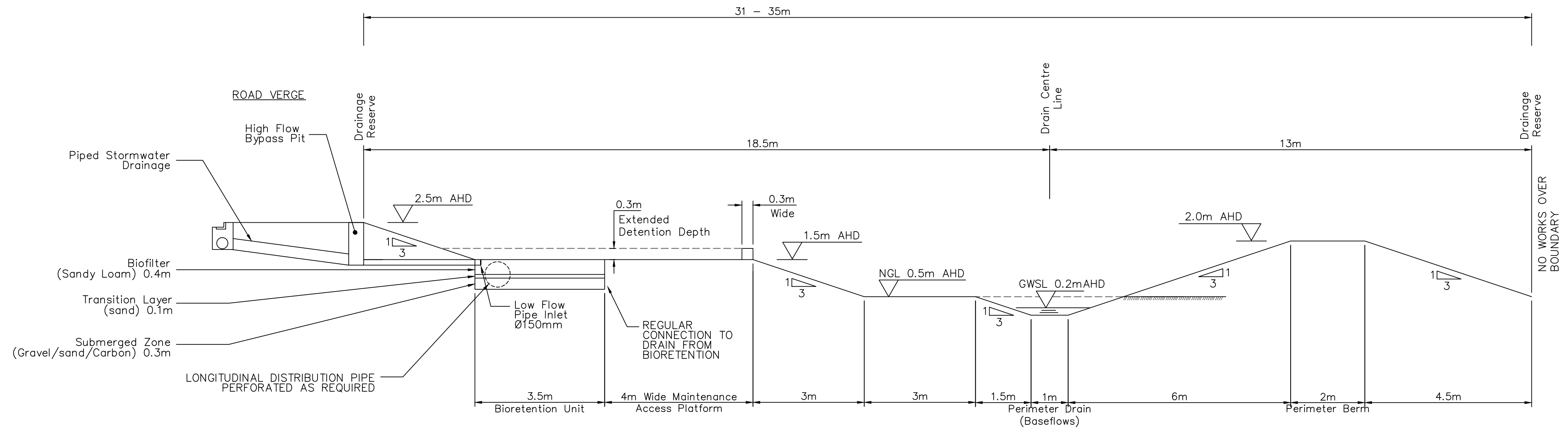
1. ALL BATTERS 1V:3H U.N.O.
2. LEVELS SHOWN ARE INDICATIVE & WILL CHANGE RELATIVE OVER LENGTH FOR RISE IN NATURAL GROUND LEVEL
3. ACCESS TO CHANNEL MAINTENANCE ACCESS FROM ROAD/CULVERT CROSSINGS

GWSL - GROUND WATER SURFACE LEVEL
NGL - NATURAL GROUND LEVEL
AHD - AUSTRALIAN HEIGHT DATUM

Ver.	Date	Comment
B	6/02/2013	Additional Detail
A	27/11/2012	Issued for Approval

COPYRIGHT NOTICE
THIS PLAN AND THE INFORMATION IT CONTAINS ARE COPYRIGHT AND REMAIN THE PROPERTY OF ADW JOHNSON PTY LTD. ADW JOHNSON PTY LTD GRANTS TO THE CLIENT NAMED ON THIS PLAN A LICENSE TO USE THE INFORMATION HEREON FOR THE PURPOSE FOR WHICH WE WERE ENGAGED TO PERFORM THE WORK. USE OF THE PLAN AND INFORMATION IT CONTAINS FOR ANY OTHER PURPOSE IS NOT PERMITTED UNLESS PRIOR WRITTEN APPROVAL HAS BEEN OBTAINED FROM ADW JOHNSON PTY LTD.

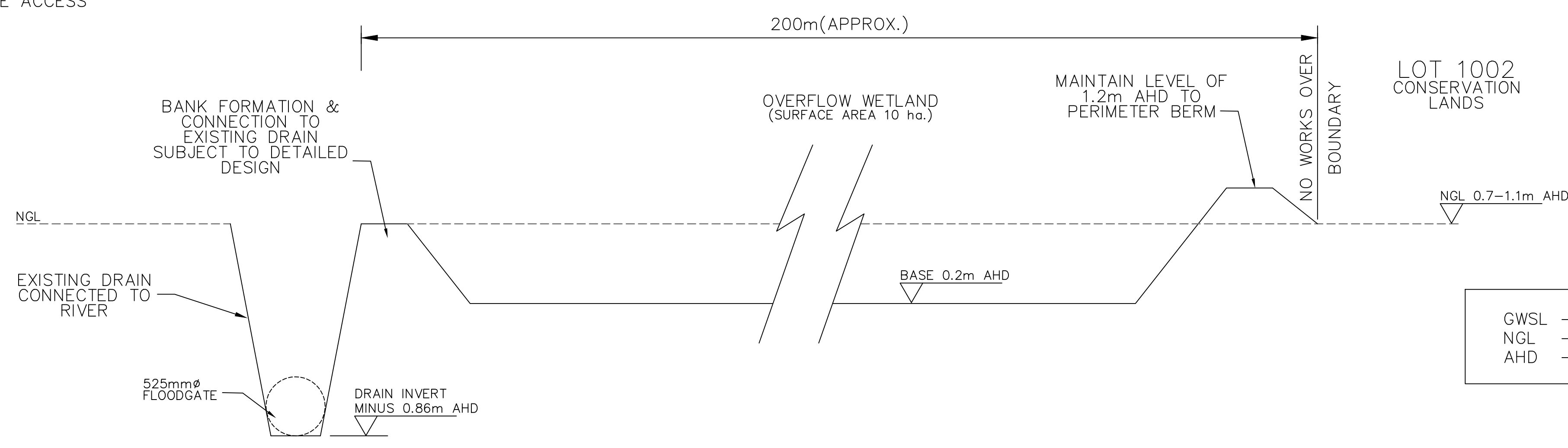
Plot File: N:\37672-Northbank\Drawings\37672-DRAIN-CROSS-SECTION-001-B.dwg



SECTION **G**
SCALE 1:75

NOTES:

1. ALL BATTERS 1V:3H U.N.O.
2. LEVELS SHOWN ARE INDICATIVE & WILL CHANGE RELATIVE OVER LENGTH FOR RISE IN NATURAL GROUND LEVEL
3. ACCESS TO CHANNEL MAINTENANCE ACCESS FROM ROAD/CULVERT CROSSINGS



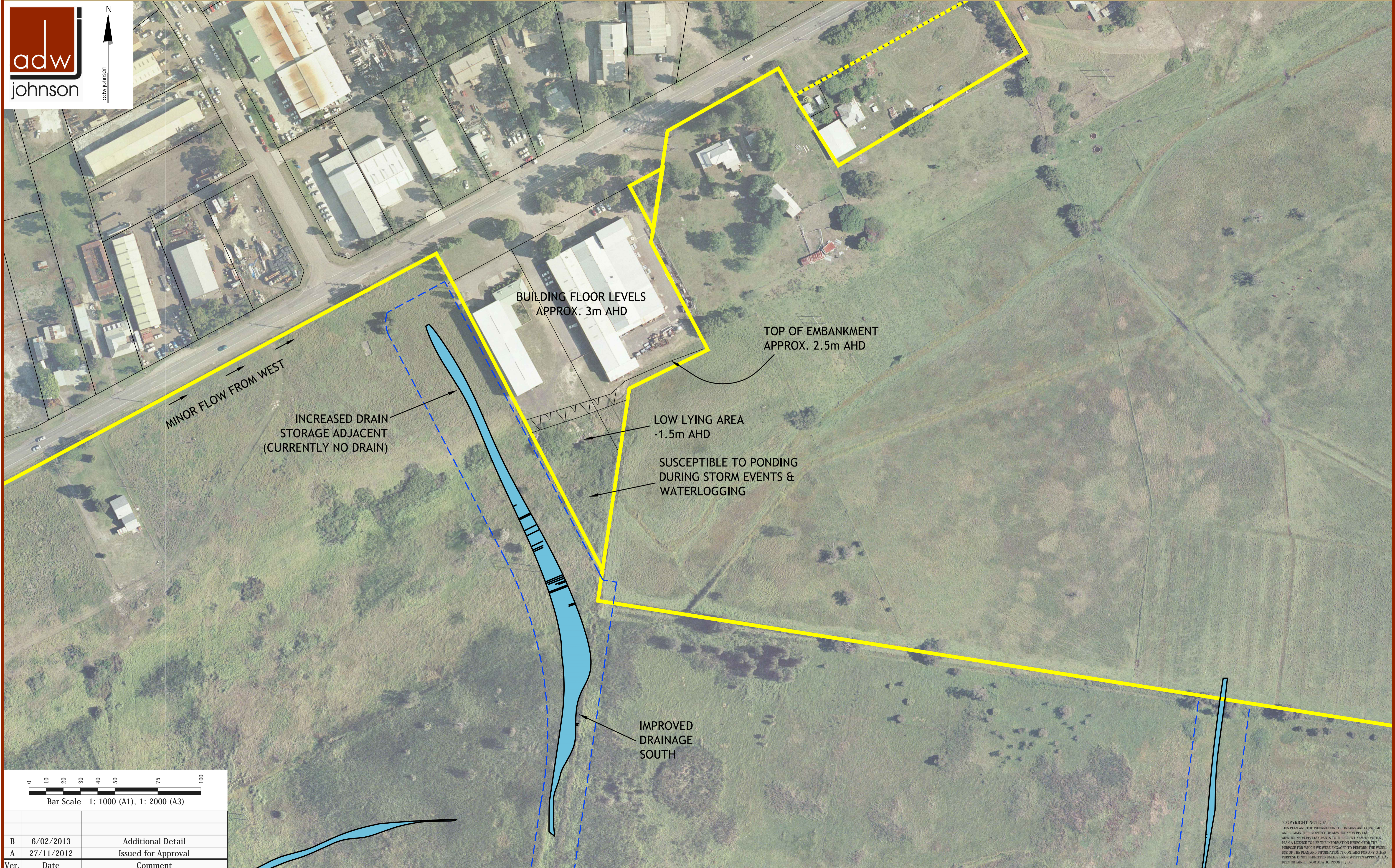
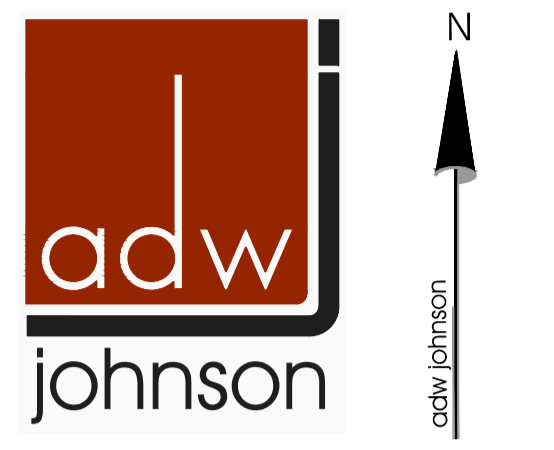
SECTION **H**
SCALE N.T.S

GWSL - GROUND WATER SURFACE LEVEL
NGL - NATURAL GROUND LEVEL
AHD - AUSTRALIAN HEIGHT DATUM

Plotted By: mhc Plot Date: 07/02/13 - 08:40 Cad File: N:\37672_Northbank\Draw\37672-DRAIN-CROSS-SECTION-001-B.dwg

Ver.	Date	Comment
B	6/02/2013	Additional Detail
A	27/11/2012	Issued for Approval

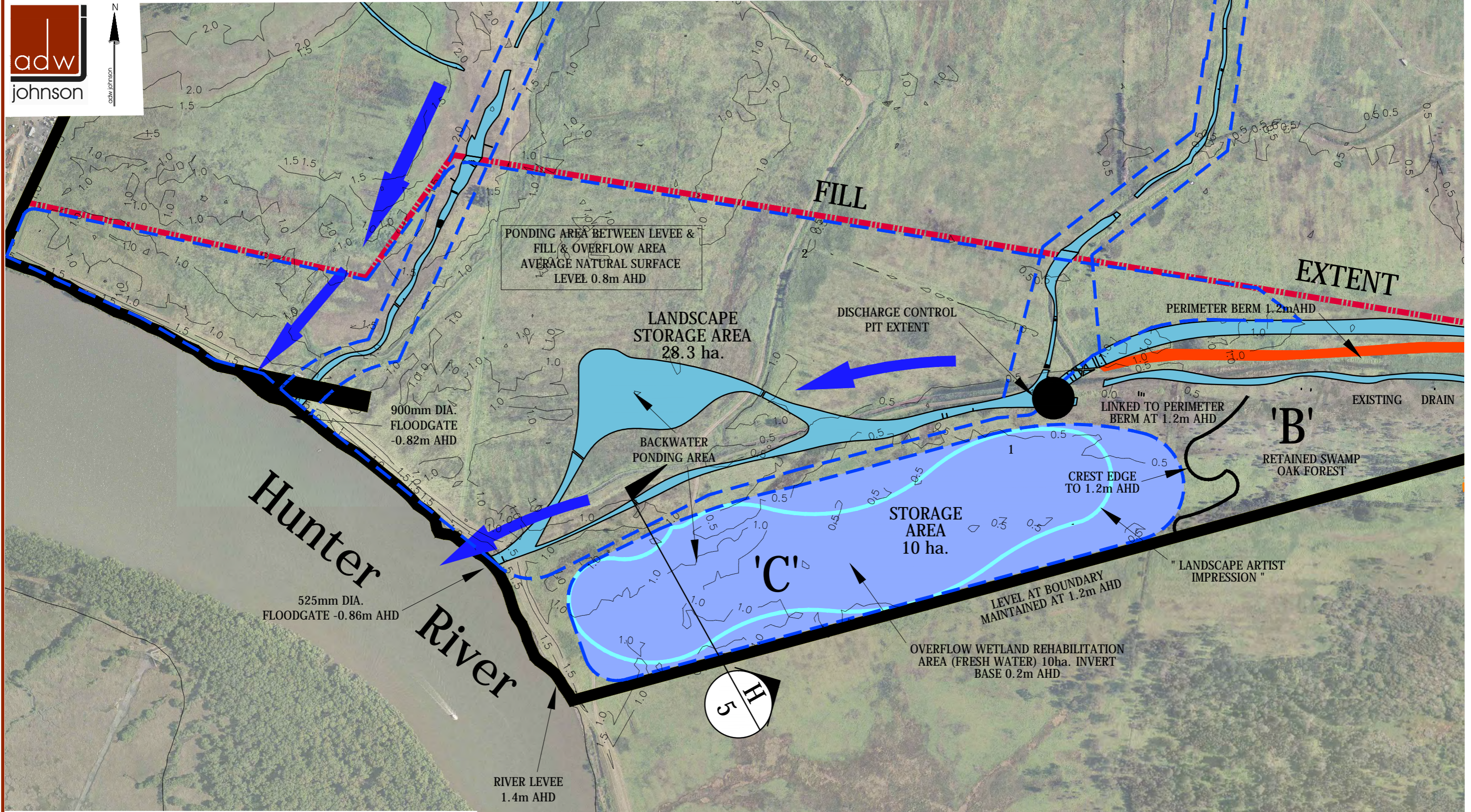
COPYRIGHT NOTICE
THIS PLAN AND THE INFORMATION IT CONTAINS ARE COPYRIGHT AND REMAIN THE PROPERTY OF ADW JOHNSON PTY LTD. ADW JOHNSON PTY LTD GRANTS TO THE CLIENT NAMED ON THIS PLAN A LICENSE TO USE THE INFORMATION HEREON FOR THE PURPOSE FOR WHICH WE WERE ENGAGED TO PERFORM THE WORK. USE OF THE PLAN AND INFORMATION IT CONTAINS FOR ANY OTHER PURPOSE IS NOT PERMITTED UNLESS PRIOR WRITTEN APPROVAL HAS BEEN OBTAINED FROM ADW JOHNSON PTY LTD.



Plot File: N:\37672-Northbank\Draw\37672-DRAIN-CROSS-SECTION-001-B.dwg
Plotted By: malc
Date: 07/02/13 - 08:40

Ver.	Date	Comment
B	6/02/2013	Additional Detail
A	27/11/2012	Issued for Approval

COPYRIGHT NOTICE
THIS PLAN AND THE INFORMATION IT CONTAINS ARE COPYRIGHT AND REMAIN THE PROPERTY OF ADW JOHNSON PTY LTD. ADW JOHNSON PTY LTD GRANTS TO THE CLIENT NAME ON THIS PLAN A LICENSE TO USE THE INFORMATION HEREON FOR THE PURPOSES FOR WHICH WE WERE ENGAGED TO PERFORM THE WORK. USE OF THE PLAN AND INFORMATION IT CONTAINS FOR ANY OTHER PURPOSE IS NOT PERMITTED UNLESS PRIOR WRITTEN APPROVAL HAS BEEN OBTAINED FROM ADW JOHNSON PTY LTD.



Plotted By: mac Plot Date: 07/02/13 - 08:46 Cell File: N:\37672-Northbank\Draw\37672-DRAIN-CROSS-SECTION-001-B.dwg

Ver.	Date	Comment
B	6/02/2013	Additional Detail
A	27/11/2012	Issued for Approval

*COPYRIGHT NOTICE
 THIS PLAN AND THE INSTRUMENTS AND CONTAINS ARE COPYRIGHT AND REMAIN THE PROPERTY OF ADW JOHNSON PTY LTD. ADW JOHNSON PTY LTD GRANTS TO THE CLIENT PERMISSION TO USE THIS PLAN AND INSTRUMENTS FOR THE PURPOSES AND SUBJECT MATTER FOR WHICH WE WERE ENGAGED TO PROVIDE OUR SERVICES. THE PLAN AND INSTRUMENTS CONTAINS NO WARRANTIES FOR ANY OTHER PURPOSES. YOU HEREBY RELEASE ADW JOHNSON PTY LTD FROM ALL LIABILITY ARISING FROM THIS PLAN AND INSTRUMENTS.