

Plan of:
**WATER QUALITY
MONITORING SITES**

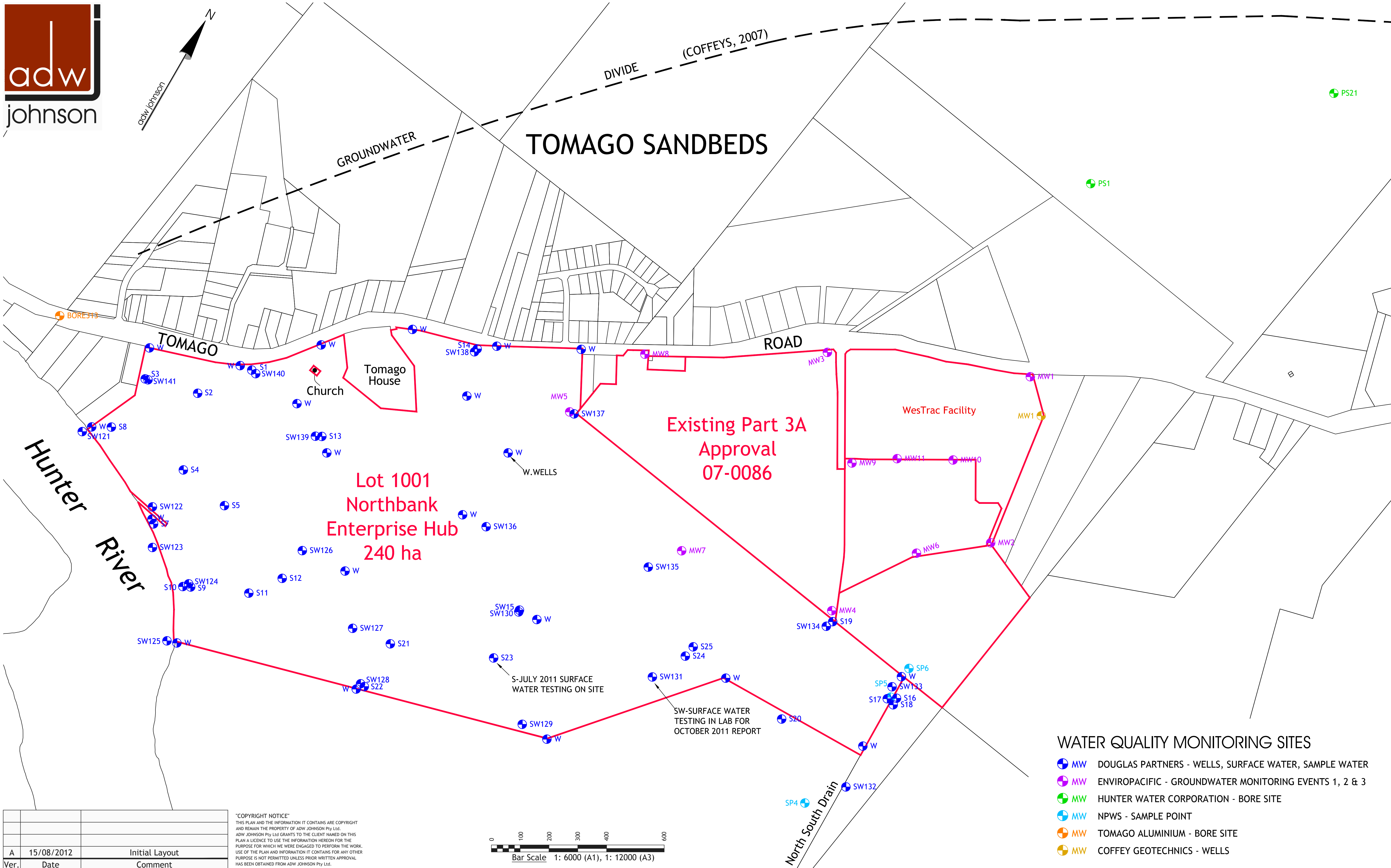
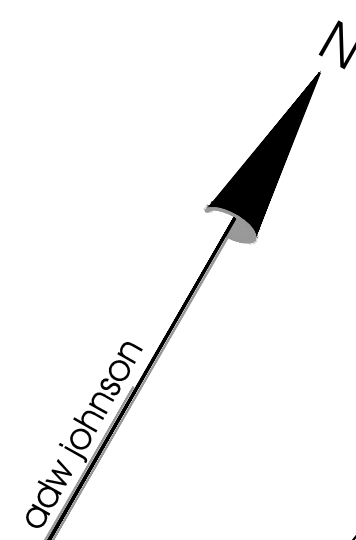
Location: Tomago Road
Tomago

Council: Port Stephens

Datum: AHD
Origin: P.M.27766
Projection: MGA Zone 56
Origin: P.M.27766
North Direction: Grid
Contour Interval: N/A

Date: 15th August 2012
Sheet: 1 of 1
Plan by: ZJ
Project Manager: SD
Office: Hunter
Plan Purpose: Monitoring Locations

Version: A (15/08/2012)
Client: Northbank Enterprise Hub
Survey: N/A
AutoCad: N:\...37672-MON-001-A
Our Ref: 37672



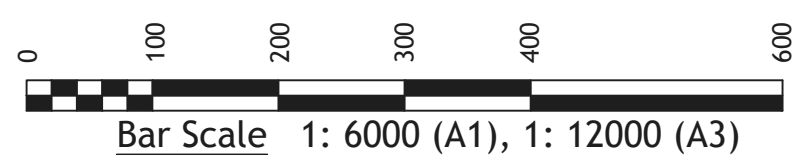
**Lot 1001
Northbank
Enterprise Hub
240 ha**

**Existing Part 3A
Approval
07-0086**

WATER QUALITY MONITORING SITES

- MW DOUGLAS PARTNERS - WELLS, SURFACE WATER, SAMPLE WATER
- MW ENVIROPACIFIC - GROUNDWATER MONITORING EVENTS 1, 2 & 3
- MW HUNTER WATER CORPORATION - BORE SITE
- MW NPWS - SAMPLE POINT
- MW TOMAGO ALUMINIUM - BORE SITE
- MW COFFEY GEOTECHNICS - WELLS

"COPYRIGHT NOTICE"
THIS PLAN AND THE INFORMATION IT CONTAINS ARE COPYRIGHT AND REMAIN THE PROPERTY OF ADW JOHNSON Pty Ltd. ADW JOHNSON Pty Ltd GRANTS TO THE CLIENT NAMED ON THIS PLAN A LICENCE TO USE THE INFORMATION HEREON FOR THE PURPOSE FOR WHICH WE WERE ENGAGED TO PERFORM THE WORK. USE OF THE PLAN AND INFORMATION IT CONTAINS FOR ANY OTHER PURPOSE IS NOT PERMITTED UNLESS PRIOR WRITTEN APPROVAL HAS BEEN OBTAINED FROM ADW JOHNSON Pty Ltd.



Ver.	Date	Comment
A	15/08/2012	Initial Layout

Plotted By: m.c. Plot Date: 27/08/12 - 14:44 Cad File: N:\37672-Northbank\ENG\Water Quality\Draws\37672-MON-001-A.dwg

Background Monitoring - Compilation Summary Sheet

Analyte	Coffey 2007		NPWS 2008-2009		EnviroPacific Groundwater Monitoring Events 1, 2 & 3 Dec 2010 - July 2011		Subtotal/Range		ANZECC
	Min	Max	Min	Max	Min	Max	Min	Max	
Ammonia (NH3) as N	0.101	1.75	-	-	<0.01	2.6	<0.01	2.6	0.5
Chloride (Cl)	26.8	9440	-	-	18	12000	18	12000	250
Electrical Conductivity (uS/cm)	262	29600	0.654	33.9	150	36000	0.654	36000	NC
Cyanide	-	-	-	-	<0.005	<0.02	<0.005	<0.02	0.004
Fluoride	<0.1	0.4	-	-	<0.1	0.7	<0.1	0.7	-
NOx (NO2 + NO3)	<0.01	0.094	-	-	<0.01	0.76	<0.01	0.76	0.015
pH	4.81	6.73	6.46	7.42	4.9	7.4	4.81	7.42	6.5-8.5
Phenolics	-	-	-	-	<0.01	3.47	<0.01	3.47	NC
Total Phosphorus	0.86	21.9	-	-	<0.01	1.2	<0.01	21.9	0.025
Sulphate (SO42-)	36	4660	-	-	<2	4440	<2	4660	500
Total Suspended Solids	1140	25200	-	-	95	6200	95	25200	NC
Total Kjeldahl Nitrogen	2.5	72.7	-	-	<0.1	2.3	<0.1	72.7	0.3
Hardness as CaCO3	-	-	-	-	-	-	-	-	200
Turbidity (NTU)	-	-	0	326	-	-	0	326	0.5-10
Dissolved oxygen	-	-	2.22	10.09	-	-	2.22	10.09	-
Water Temperature	-	-	9.9	26.5	-	-	9.9	26.5	-
Salinity	-	-	0	2.1	-	-	0	2.1	-
Total Dissolved Solids	-	-	0.419	20	-	-	0.419	20	-
Specific Gravity of Seawater	-	-	0	13	-	-	0	13	-
Oxidation Reduction Potential	-	-	-146	117	-	-	-146	117	-
Alkali Metals									
Calcium	<1	534	-	-	0.5	590	0.5	590	NC
Magnesium	5	1020	-	-	2.1	1510	2.1	1510	NC
Potassium	1	225	-	-	1.1	425	1	425	NC
Sodium	28	5170	-	-	16.9	8300	16.9	8300	180
Hydroxide	-	-	-	-	<5	<5	<5	<5	-
Alkalinity									
Bicarbonate (HCO3)	9	688	-	-	<5	730	<5	730	NC
Carbonate (CO32-)	-	-	-	-	<5	12	<5	12	NC
Total Alkalinity	9	688	-	-	-	-	9	688	-
BTEX									
Benzene	-	-	-	-	<0.001	<1	<0.001	<1	0.001
Ethyl Benzene	-	-	-	-	<0.001	<1	<0.001	<1	0.08
Toluene	-	-	-	-	<0.001	<1	<0.001	<1	0.18
Total BTEX	-	-	-	-	<0.01	<0.1	<0.01	<0.1	-
Total m+p-Xylenes	-	-	-	-	<0.002	<2	<0.002	<2	-
Xylenes(ortho.meta and para)	-	-	-	-	<0.003	<0.003	<0.003	<0.003	0.2
4-Bromofluorobenzene (surr.)	-	-	-	-	76%	123%	76%	123%	-
Heavy Metals									
Arsenic	-	-	-	-	<0.001	30	<0.001	30	0.013
Cadmium	-	-	-	-	<0.0001	0.2	<0.0001	0.2	0.0002
Chromium	-	-	-	-	<0.001	14	<0.001	14	0.001
Copper	-	-	-	-	<0.001	46	<0.001	46	0.0013
Iron	-	-	-	-	0.07	25	0.07	25	0.3
Lead	-	-	-	-	<0.001	1	<0.001	1	0.0034
Manganese	-	-	-	-	0.017	12600	0.017	12600	0.5
Mercury	-	-	-	-	<0.0001	<0.1	<0.0001	<0.1	0.00006
Molybdenum	-	-	-	-	<0.001	2	<0.001	2	0.05
Nickel	-	-	-	-	<0.001	86	<0.001	86	0.007
Zinc	-	-	-	-	<0.005	40	<0.005	40	0.005
Organochlorine Pesticides									
4,4-DDD	-	-	-	-	<0.0001	<0.5	<0.0001	<0.5	-
4,4-DDE	-	-	-	-	<0.0001	<0.5	<0.0001	<0.5	-
4,4-DDT	-	-	-	-	<0.0001	<2	<0.0001	<2	-

a-BHC	-	-	-	-	<0.0001	<0.5		<0.0001	<0.5	-
Aldrin	-	-	-	-	<0.0001	<0.5		<0.0001	<0.5	NC
b-BHC	-	-	-	-	<0.0001	<0.5		<0.0001	<0.5	-
chlordane	-	-	-	-	<0.001	<0.5		<0.001	<0.5	0.0003
d-BHC	-	-	-	-	<0.0001	<0.5		<0.0001	<0.5	-
Dieldrin	-	-	-	-	<0.0001	<0.5		<0.0001	<0.5	NC
Endosulfan I	-	-	-	-	<0.0001	<0.5		<0.0001	<0.5	-
Endosulfan II	-	-	-	-	<0.0001	<0.5		<0.0001	<0.5	-
Endosulfan sulphate	-	-	-	-	<0.0001	<0.5		<0.0001	<0.5	-
Endrin	-	-	-	-	<0.0001	<0.5		<0.0001	<0.5	-
Endrin aldehyde	-	-	-	-	<0.0001	<0.0005		<0.0001	<0.0005	-
Endrin ketone	-	-	-	-	<0.0001	<0.0005		<0.0001	<0.0005	-
g-BHC (Lindane)	-	-	-	-	<0.0001	<0.5		<0.0001	<0.5	-
Heptachlor	-	-	-	-	<0.0001	<0.5		<0.0001	<0.5	0.00001
Heptachlor epoxide	-	-	-	-	<0.0001	<0.5		<0.0001	<0.5	-
Hexachlorobenzene	-	-	-	-	<0.0001	<0.5		<0.0001	<0.5	-
Methoxychlor	-	-	-	-	<0.0001	<2		<0.0001	<2	-
Toxaphene	-	-	-	-	<0.001	<0.001		<0.001	<0.001	-
Dibutylchlorodate (surr.)	-	-	-	-	71%	149%		71%	149%	-
Tetrachloro-m-xylene (surr.)	-	-	-	-	76%	103%		76%	103%	-
Total OCPs	-	-	-	-						NC
Organophosphorous Pesticides										
Bolstar	-	-	-	-	<0.002	<0.002		<0.002	<0.002	-
Chlorpyrifos	-	-	-	-	<0.002	<2		<0.002	<2	-
Coumaphos	-	-	-	-	<0.002	<2		<0.002	<2	-
Demeton	-	-	-	-	<0.002	<4		<0.002	<4	-
Diazinon	-	-	-	-	<0.002	<2		<0.002	<2	-
Dichlorvos	-	-	-	-	<0.002	<2		<0.002	<2	-
Dimethoate	-	-	-	-	<0.002	<2		<0.002	<2	-
Disulfoton	-	-	-	-	<0.002	<2		<0.002	<2	-
Ethion	-	-	-	-	<0.002	<0.002		<0.002	<0.002	-
Ethoprop	-	-	-	-	<0.002	<2		<0.002	<2	-
Fenitrothion	-	-	-	-	<0.002	<2		<0.002	<2	-
Fensulfthion	-	-	-	-	<0.002	<0.002		<0.002	<0.002	-
Fenthion	-	-	-	-	<0.002	<2		<0.002	<2	-
Malathion	-	-	-	-	<0.002	<2		<0.002	<2	-
Merphos	-	-	-	-	<0.002	<0.002		<0.002	<0.002	-
methyl Azinophos	-	-	-	-	<0.002	<2		<0.002	<2	-
Methyl parathion	-	-	-	-	<0.002	<2		<0.002	<2	-
Mevinphos (Phosdrin)	-	-	-	-	<0.002	<2		<0.002	<2	-
Monocrotophos	-	-	-	-	<0.02	<0.02		<0.02	<0.02	-
Naled	-	-	-	-	<0.002	<0.002		<0.002	<0.002	-
Parathion	-	-	-	-	<0.002	<2		<0.002	<2	-
Phorate	-	-	-	-	<0.002	<2		<0.002	<2	-
Prothenofos	-	-	-	-	<0.002	<0.002		<0.002	<0.002	-
Prothiofos	-	-	-	-	<0.002	<2		<0.002	<2	-
Ronnel	-	-	-	-	<0.002	<2		<0.002	<2	-
Stirophos	-	-	-	-	<0.002	<0.002		<0.002	<0.002	-
Tokuthion	-	-	-	-	<0.002	<0.002		<0.002	<0.002	-
Trichloronate	-	-	-	-	<0.002	<0.002		<0.002	<0.002	-
Triphenylphosphate (surr.)	-	-	-	-	53%	130%		53%	130%	-
Polychlorinated Biphenyls										
Arochlor 1016	-	-	-	-	<0.001	<5		<0.001	<5	-
Arochlor 1221	-	-	-	-	<0.001	<0.001		<0.001	<0.001	-
Arochlor 1232	-	-	-	-	<0.001	<5		<0.001	<5	-
Arochlor 1242	-	-	-	-	<0.001	<5		<0.001	<5	-
Arochlor 1248	-	-	-	-	<0.001	<5		<0.001	<5	-
Arochlor 1254	-	-	-	-	<0.001	<5		<0.001	<5	-
Arochlor 1260	-	-	-	-	<0.001	<5		<0.001	<5	-
Total PCBs	-	-	-	-	<0.01	<0.5		<0.01	<0.5	NC
Dibutylchlorodate (surr.)	-	-	-	-	71%	149%		71%	149%	-
Tetrachloro-m-xylene (surr.)	-	-	-	-	76%	103%		76%	103%	-
Polycyclic Aromatic Hydrocarbons										
Acenaphthene	-	-	-	-	<0.001	<1		<0.001	<1	NC

Acenaphthylene	-	-	-	-	<0.001	<1		<0.001	<1	NC
Anthracene	-	-	-	-	<0.001	<1		<0.001	<1	-
Benzo[a]anthracene	-	-	-	-	<0.001	<1		<0.001	<1	NC
Benzo[a]pyrene	-	-	-	-	<0.001	<1		<0.001	<1	0.00001
Benzo(b)fluoranthene & Benzo(k)fluoranthene	-	-	-	-	<0.002	<0.002		<0.002	<0.002	-
Benzo[b,k]fluoranthene	-	-	-	-	<0.001	<2		<0.001	<2	NC
Benzo[ghi]perylene	-	-	-	-	<0.001	<1		<0.001	<1	NC
Benzo(k)fluoranthene	-	-	-	-	<0.001	<0.001		<0.001	<0.001	-
Chrysene	-	-	-	-	<0.001	<1		<0.001	<1	NC
Dibenzo[ah]anthracene	-	-	-	-	<0.001	<1		<0.001	<1	NC
Fluoranthene	-	-	-	-	<0.001	<1		<0.001	<1	-
Fluorene	-	-	-	-	<0.001	<1		<0.001	<1	NC
Indeno[123-cd]pyrene	-	-	-	-	<0.001	<1		<0.001	<1	NC
Naphthalene	-	-	-	-	<0.001	<1		<0.001	<1	0.016
Phenanthrene	-	-	-	-	<0.001	<1		<0.001	<1	-
Pyrene	-	-	-	-	<0.001	<1		<0.001	<1	NC
Total PAH	-	-	-	-	<0.001	<0.001		<0.001	<0.001	-
Anthracene-d10 (surr.)	-	-	-	-	100%	107%		100%	107%	-
p-Terphenyl-d14 (surr.)	-	-	-	-	70%	121%		70%	121%	-
2-Fluorobiphenyl (surr.)	-	-	-	-	78%	118%		78%	118%	-
DDT	-	-	-	-	-	-		-	-	0.000006
Total Recoverable Hydrocarbons										
TRH C10-36 (Total)	-	-	-	-	<0.1	0.3		<0.1	0.3	-
C10 – C14	-	-	-	-	<0.05	90		<0.05	90	NC
C15 – C28	-	-	-	-	<0.1	660		<0.1	660	NC
C29 – C36	-	-	-	-	<0.1	250		<0.1	250	NC
C6 – C9	-	-	-	-	<0.02	50		<0.02	50	NC

NC - No current criteria				
TBC - Criteria to be confirmed from results of baseline water quality testing				
ANZECC - Lowest of 95% Marine and Fresh criteria				
Drinking - NHMRC Health Based				
All parameters mg/L unless otherwise shown				
Dash - No information given				

	REDUCED LVL GROUNDWATER m	pH	COND mS/m	SOL F mg/L
Jan-10	1.34	5.0	31	0.14
Feb-10	1.37	5.8	30	0.23
Mar-10	1.30	5.8	26	0.14
Apr-10	1.39	5.8	23	0.10
May-10	1.49	5.9	23	0.17
Jun-10	nra	nra	nra	nra
Jul-10	1.51	5.5	29	0.13
Aug-10	1.39	5.3	37	0.1
Sep-10	1.40	5.6	36	0.2
Oct-10	1.37	5.4	31	0.12
Nov-10	1.55	5.5	32	0.14
Dec-10	1.42	5.5	34	0.21
Jan-11	1.37	5.5	31	0.10
Feb-11	1.40	5.6	28	0.13
Mar-11	1.35	5.4	24	0.31
Apr-11	1.55	5.4	34	0.13
May-11	1.56	5.4	35	0.15
Jun-11	1.26	6.1	36	0.18
Jul-11	1.61	5.3	35	0.10
Aug-11	1.56	5.3	34	0.10
Sep-11	1.59	5.4	38	0.11
Oct-11	1.48	5.4	36	0.10
Nov-11	1.73	5.7	33	0.23
Dec-11	1.69	5.5	32	0.10
Jan-12	1.49	5.4	32	0.23
Feb-12	1.49	5.3	33	0.12
Mar-12	1.39	5.6	33	0.10
Apr-12	1.59	5.2	33	0.18
May-12	nra	nra	nra	nra
Jun-12	nra	nra	nra	nra



Sub Site Desc	Date Sampled	AS-VGA (ug/L)	COND-C (uS/cm)	COND-W (uS/cm)	FE-CLEAN (mg/L)	FE-ICP-C (ug/L)	MN-CLEAN (mg/L)	MN-ICP-C (ug/L)
No 1 Field Station	22-Apr-96	<0.2						
No. 24 Boreline	8-Nov-00	0.4						
No. 24 Boreline	15-Nov-00	0.2						
No. 24 Boreline	23-Nov-00	0.2						
No. 24 Boreline	28-Feb-01	0.3						
No. 24 Boreline	8-Mar-01	0.4						
No. 24 Boreline	14-Mar-01	0.3						
No. 24 Boreline	22-Mar-01	0.2						
No. 24 Boreline	3-May-01	0.4						
No. 24 Boreline	31-May-01	0.2						
No. 24 Boreline	13-Jun-01	0.1						
No. 24 Boreline	4-Jul-01	0.3						
No. 24 Boreline	11-Jul-01	0.1						
No. 24 Boreline	19-Jul-01	0.1						
No. 24 Boreline	25-Jul-01	<0.1						
No. 24 Boreline	1-Aug-01	0.3						
No. 24 Boreline	8-Aug-01	0.7						
No. 24 Boreline	14-Aug-01	0.5						
No. 24 Boreline	22-Aug-01	0.7						
No. 24 Boreline	28-Aug-01	0.6						
No. 24 Boreline	6-Sep-01	0.4						
No. 24 Boreline	12-Sep-01	0.4						
No. 24 Boreline	19-Sep-01	0.3						
No. 24 Boreline	25-Sep-01	<0.1						
No. 24 Boreline	4-Oct-01	0.2						
No. 24 Boreline	10-Oct-01	0.3						
No. 24 Boreline	18-Oct-01	<0.1						
No. 24 Boreline	1-Nov-01	0.2						
No. 24 Boreline	7-Nov-01	0.5						
No. 24 Boreline	14-Nov-01	0.6						
No. 24 Boreline	22-Nov-01	0.8						
No. 24 Boreline	29-Nov-01	0.4						
No. 24 Boreline	7-Dec-01	0.4						
No. 24 Boreline	10-May-02	0.4						
No. 24 Boreline	21-May-02	0.3						
No. 24 Boreline	31-May-02	1.1						
No. 24 Boreline	2-Jul-02	0.4						
No. 24 Boreline	10-Jul-02	0.3						
No. 24 Boreline	17-Jul-02	0.3						

No. 24 Boreline	24-Jul-02	0.3					
Tomago No 24 Boreline	23-Sep-09	0.9	168			954	66
Tomago No 24 Boreline	9-Oct-09	1.1				1738	75
Tomago No 24 Boreline	22-Oct-09	0.8		182		920	71
Tomago No 24 Boreline	4-Nov-09	0.2				1150	115
Tomago No 24 Boreline	12-Nov-09	0.5		222		990	97
Tomago No 24 Boreline	19-Nov-09	0.3				1050	103
Tomago No 24 Boreline	24-Nov-09	0.8				1180	53
Tomago No. 24 Boreline	31-Jul-02	0.5					
Tomago No. 24 Boreline	10-Sep-02	0.3					
Tomago No. 24 Boreline	23-Sep-02	0.2					
Tomago No. 24 Boreline	26-Sep-02	0.23					
Tomago No. 24 Boreline	10-Oct-02	0.28					
Tomago No. 24 Boreline	16-Oct-02	0.3					
Tomago No. 24 Boreline	22-Oct-02	0.3					
Tomago No. 24 Boreline	15-Apr-03	0.3					
Tomago No. 24 Boreline	16-Apr-03	0.3					
Tomago No. 24 Boreline	28-Apr-03	0.3					
Tomago No. 24 Boreline	26-May-03	0.2					
Tomago No. 24 Boreline	10-Jun-03	0.2					
Tomago No. 24 Boreline	11-Jul-03	1.1					
Tomago No. 24 Boreline	21-Jul-03	<0.1					
Tomago No. 24 Boreline	28-Jul-03	0.2					
Tomago No. 24 Boreline	30-Jul-03	<0.1					
Tomago No. 24 Boreline	14-Aug-03	0.2					
Tomago No. 24 Boreline	19-Aug-03	0.1					
Tomago No. 24 Boreline	27-Aug-03	0.7					
Tomago No. 24 Boreline	3-Sep-03	0.2					
Tomago No. 24 Boreline	11-Sep-03	0.15					
Tomago No. 24 Boreline	19-Feb-04	0.2					
Tomago No. 24 Boreline	8-Mar-04	0.2					
Tomago No. 24 Boreline	7-Apr-04	0.2					
Tomago No. 24 Boreline	16-Apr-04	0.3					
Tomago No. 24 Boreline	21-Apr-04	0.4					
Tomago No. 24 Boreline	28-Apr-04	0.3					
Tomago No. 24 Boreline	5-May-04	0.3					
Tomago No. 24 Boreline	12-May-04	0.2					
Tomago No. 24 Boreline	19-May-04	0.3					
No.24 Boreline Pump 1	29-Mar-01	0.1					
No.24 Boreline Pump 1	5-Apr-01	<0.1					

No.24 Boreline Pump 1	5-Apr-01	<0.1						
No.24 Boreline Pump 1	11-Apr-01	<0.1						
No.24 Boreline Pump 1	19-Apr-01	0.1						
No.24 Boreline Pump 1	26-Apr-01	0.2						
No.24 Boreline Pump 1	30-Apr-02	0.2					0.04	
N0.24 Boreline Pump 2	29-Mar-01	0.3						
N0.24 Boreline Pump 2	11-Apr-01	0.2						
N0.24 Boreline Pump 2	19-Apr-01	0.2						
N0.24 Boreline Pump 2	26-Apr-01	0.3						
N0.24 Boreline Pump 2	30-Apr-02	0.4					0.23	
No.24 Boreline Pump 3	29-Mar-01	<0.1						
No.24 Boreline Pump 3	5-Apr-01	<0.1						
No.24 Boreline Pump 3	11-Apr-01	<0.1						
No.24 Boreline Pump 3	19-Apr-01	<0.1						
No.24 Boreline Pump 3	26-Apr-01	0.6						
No.24 Boreline Pump 3	30-Apr-02	0.5					0.05	
N0.24 Boreline Pump 4	29-Mar-01	0.4						
N0.24 Boreline Pump 4	5-Apr-01	0.5						
N0.24 Boreline Pump 4	11-Apr-01	0.2						
N0.24 Boreline Pump 4	19-Apr-01	0.2						
N0.24 Boreline Pump 4	26-Apr-01	0.7						
N0.24 Boreline Pump 4	30-Apr-02	0.6					0.06	
Tomago Bore 24	22-Jun-05	0.4						
Tomago Bore 24	28-Jun-05	0.3						
Tomago Bore 24	7-Jul-05	0.3						
Tomago Bore 24	14-Jul-05	0.3						
Tomago Bore 24	21-Jul-05	0.5						
Tomago Bore 24	28-Jul-05	0.3						
Tomago Bore 24	10-Aug-05	0.3						
Tomago Bore 24	22-Aug-05	0.4						

Tomago Bore 24	30-Aug-05	0.2						
Tomago Bore 24	7-Sep-05	0.3						
Tomago Bore 24	14-Sep-05	0.3						
Tomago Bore 24	14-Sep-05	0.3						
Tomago Bore 24	6-Oct-05	0.2						
Tomago Bore 24	18-Nov-05	0.2						
Tomago Bore 24	25-Nov-05	0.2						
Tomago Bore 24	31-Oct-05	0.2						
Tomago Bore 24	8-Nov-05	0.3						
Tomago Bore 24	21-Nov-05	0.4						
Tomago Bore 24	17-Nov-05				1.14		0.06	
Tomago Bore 24	15-Aug-06	0.3						
Tomago Bore 24	23-Aug-06	0.5						
Tomago Bore 24	30-Aug-06	0.5						
Tomago Bore 24	8-Sep-06	0.2						
Tomago Bore 24	25-Sep-06	0.3						
Tomago Bore 24	3-Oct-06	1.4						
Tomago Bore 24	20-Oct-06	0.2						
Tomago Bore 24	13-Oct-06	0.3						
Tomago Bore 24	6-Nov-06	0.7						
Tomago Bore 24	27-Oct-06	0.4						
Tomago Bore 24	10-Nov-06	0.3						
Tomago Bore 24	17-Nov-06	0.4						
Tomago Bore 24	24-Nov-06	0.2						