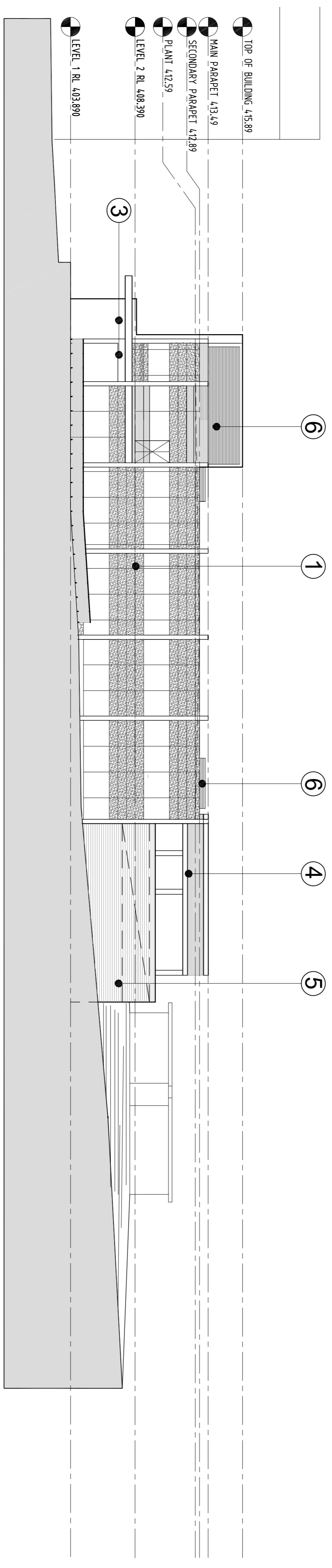
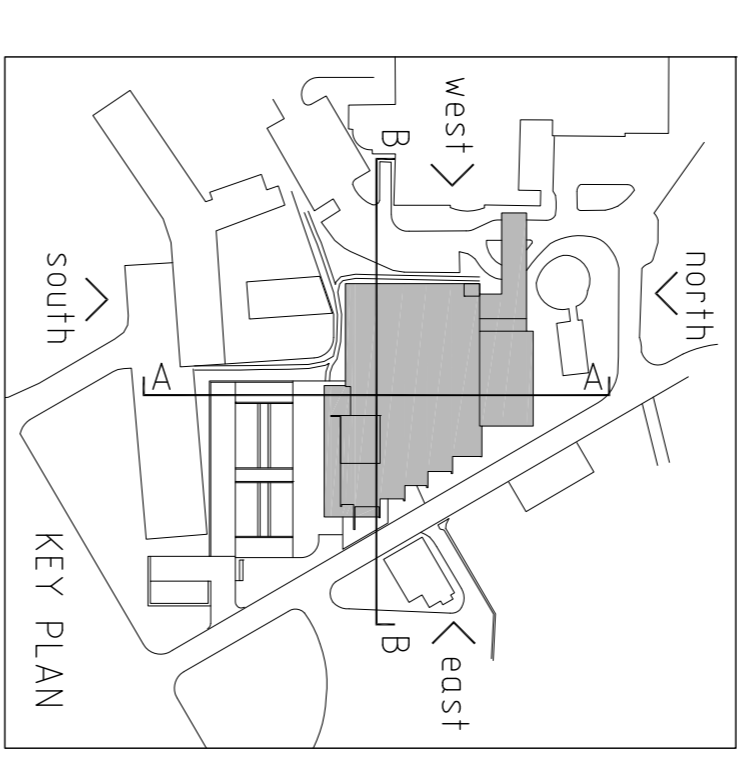


NORTH ELEVATION
1:200



EAST ELEVATION
1:200

- ① full height glazing + glass spandrel
- ② TYPE A panel and aluminium framed strip windows
- ③ TYPE B panel and aluminium framed window infill
- ④ steel structure awning
- ⑤ off-form concrete (applied texture finish)
- ⑥ mechanical plant room louvre wall
- ⑦ Translucent fibreglass cladding to exterior handrails and awning bulkheads

rev	date	by	description
01	12.11.10 DJM	PART 3A TEST FOR ADEQUACY	
02	19.11.10 DJM	PART 3A TEST FOR ADEQUACY	

HUNTER NEW ENGLAND
NSW HEALTH

THE NEW ENGLAND NORTH WEST
REGIONAL CANCER CENTRE
(NENW RCC) AT TAMMORTH

NSW GOVERNMENT
HEALTH INFRASTRUCTURE
NSW HEALTH
projects
SPECIALIST LEADERS AND MANAGERS

coffey

silver thomas hanley
HEALTH ARCHITECTURE

LEVEL 3, 73 YORK STREET
SYDNEY NSW 2000
AUSTRALIA
T. +61 2 9299 4600
F. +61 2 9299 4646
E. sth@sthsilver.com.au
W. www.sth.com.au

TITLE: ELEVATIONS & SECTIONS
SCALE: 1 : 200
DATE: 12. Nov. 2010

DRG No: **DOP 10**
REVISION: **02**

Copyright Silver Thomas Hanley Pty Ltd
 Copyright NSW Health
 All rights reserved. This document is the property of Silver Thomas Hanley Pty Ltd. No part of this document may be reproduced, stored in a retrieval system, or transmitted in any form or by any means, electronic, mechanical, photocopying, recording, or by any information storage and retrieval system, without the prior written permission of Silver Thomas Hanley Pty Ltd.