



3D view 1 - south east



3D view 2 - north east



NSW GOVERNMENT
Planning

Issued under the Environmental Planning and Assessment Act 1979

Approved Application No. MP10-0173

granted on the 16 MAY 2011

Signed [Signature]

Sheet No. 1 of 16

REV	DATE	BY	DESCRIPTION
01	17.11.10	BK	DRAFT FOR PART 3A TEST FOR ADEQUACY
02	17.11.10	BK	DRAFT FOR PART 3A TEST FOR ADEQUACY
03	14.02.11	BoM	REVISED TO INCLUDE CANOPY EXTENSION AND FRONT ENTRY LANDSCAPE AREA

NSW HEALTH CENTRAL COAST REGIONAL
NORTHERN SYDNEY CANCER CARE CENTRE
CENTRAL COAST Gosford Hospital Cnr Holden Street and Racecourse Road
AREA HEALTH SERVICE GOSFORD NSW 2250



HEALTH INFRASTRUCTURE
NSW HEALTH

coffey projects
SPECIALIST LEADERS AND MANAGERS

TITLE: PHOTO REALISTIC VIEWS
SCALE: nts
DATE:



LEVEL 3, 73 YORK STREET
SYDNEY NSW 2000
AUSTRALIA
T: +61 2 8299 4600
F: +61 2 8299 4646
E: sth@sthsydney.com.au
W: www.sth.com.au

DRG No:
DoP 01
REVISION:
03



3D View 3



NSW GOVERNMENT
Planning

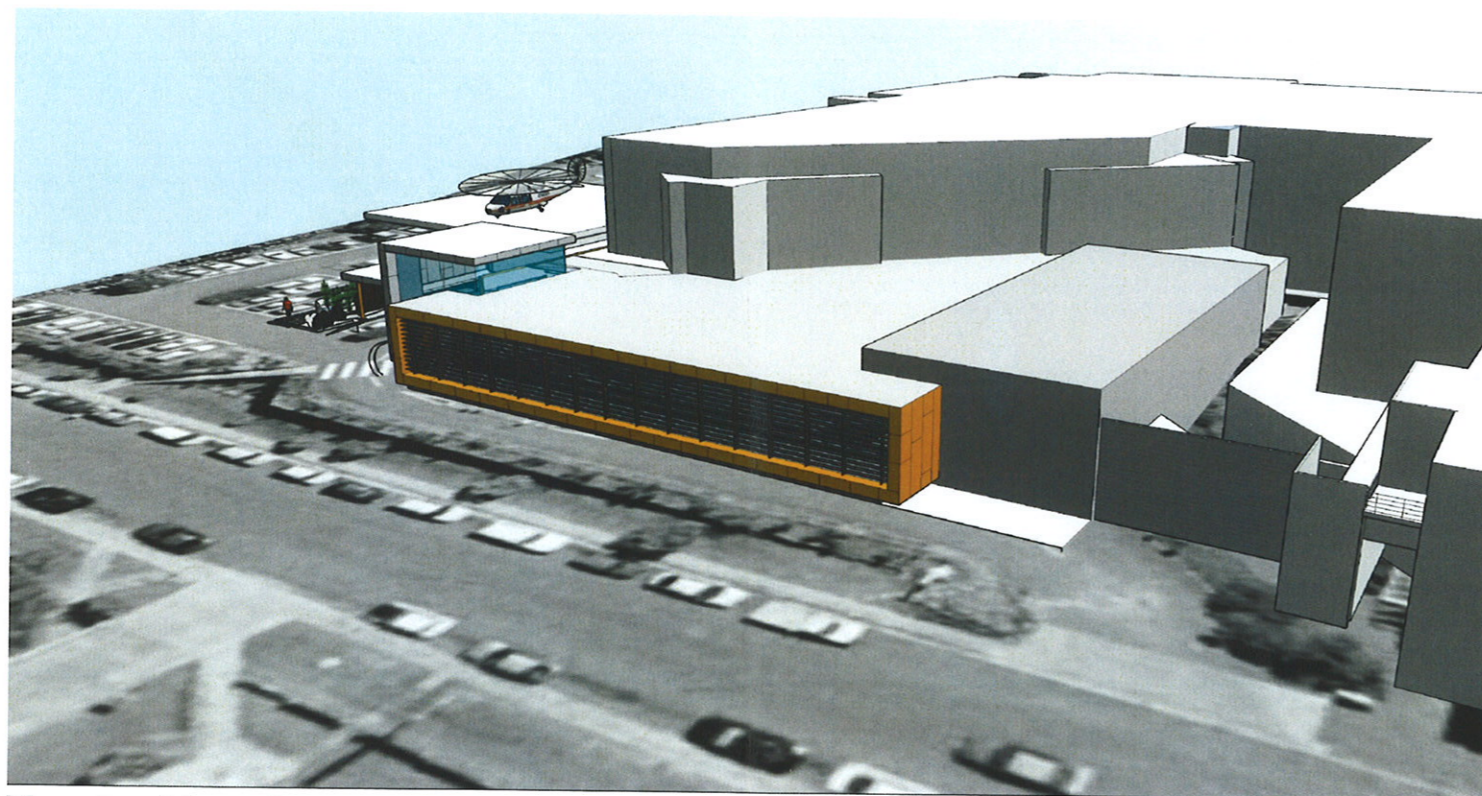
Issued under the Environmental Planning and Assessment Act 1979

Approved Application No. MP10-0173

Granted on the 16 MAY 2011

Signed [Signature]

Sheet No. 2 of 16



Massing View 4



Massing View 5

rev	date	by	description
01	17.11.10	BK	DRAFT FOR PART 3A TEST FOR ADEQUACY
02	17.11.10	BK	DRAFT FOR PART 3A TEST FOR ADEQUACY
03	14.02.11	BoM	REVISED TO INCLUDE CANOPY EXTENSION

NSW HEALTH CENTRAL COAST REGIONAL
NORTHERN SYDNEY CANCER CARE CENTRE
CENTRAL COAST Gosford Hospital Cnr Holden Street and Racecourse Road
 AREA HEALTH SERVICE GOSFORD NSW 2250

NSW GOVERNMENT HEALTH INFRASTRUCTURE
NSW HEALTH
coffey projects SPECIALIST LEADERS AND MANAGERS

TITLE: MASSING IMAGES
 SCALE: NTS
 DATE:

silver thomas hanley
 HEALTH ARCHITECTURE

LEVEL 3, 73 YORK STREET
 SYDNEY NSW 2000
 AUSTRALIA
 T: +61 2 8299 4600
 F: +61 2 8299 4646
 E: sth@sthnsydney.com.au
 W: www.sth.com.au

DRG No: **DoP 02**
 REVISION: **03**

used under the Environmental Planning and Assessment Act 1979
 Approved Application No. **MP10-0173**
 granted on the **16 MAY 2011**
 signed: *[Signature]*

GOSFORD HOSPITAL
 AMBULANCE DROP OFF
 PATIENT DROP OFF



- MAIN ROADS
- T GOSFORD TRAIN STATION
- TRAIN LINE
- SUN PATH
- PEDESTRIAN ROUTE
- WEATHER
- VIEWS
- NOISE (TRAIN LINE)
- SITE BOUNDARY
- REFURB
- NEW BUILD

rev	date	by	description
01	17.11.10	BK	DRAFT FOR PART 3A TEST FOR ADEQUACY
02	17.11.10	BK	DRAFT FOR PART 3A TEST FOR ADEQUACY

NSW HEALTH
 NORTHERN SYDNEY
 CENTRAL COAST
 AREA HEALTH SERVICE

**CENTRAL COAST REGIONAL
 CANCER CARE CENTRE**
 Gosford Hospital Cnr Holden Street and Racecourse Road
 GOSFORD NSW 2250

HEALTH INFRASTRUCTURE
 NSW HEALTH

coffey projects
 SPECIALIST LEADERS AND MANAGERS

TITLE: **SITE ANALYSIS PLAN**
 SCALE: NTS
 DATE:

silver thomas hanley
 HEALTH ARCHITECTURE

LEVEL 3, 73 YORK STREET
 SYDNEY NSW 2000
 AUSTRALIA
 T: +61 2 8299 4600
 F: +61 2 8299 4646
 E: sth@sthhsydney.com.au
 W: www.sth.com.au

DRG No: **DoP 03**
 REVISION: **02**



NSW GOVERNMENT Planning
 Issued under the Environmental Planning and Assessment Act 1979
 Approved Application No. **MP10-0173**
 Granted on the **16 MAY 2011**
 Signed
 File No. **4** of **16**

- GOSFORD HOSPITAL
- GOSFORD HOSPITAL CAMPUS BOUNDARY
- GOSFORD TRAIN STATION
- MAIN ROADS
- REGIONAL ROAD
- BUS/ SHUTTLE ROUTES
- 1** GOSFORD GOLF COURSE
- 2** GOSFORD SHOWGROUND
- 3** HIGH SCHOOL
- 4** RESIDENTIAL ZONE
- 5** RUMBALARA RESERVE LOOKOUT
- 6** CITY BUSINESS DISTRICT
- 7** STADIUM
- 8** GOSFORD WATER FRONT
- 9** GOSFORD RACECOURSE
- 10** NARARA CREEK
- 11** PRESIDENTS HILL

rev	date	by	description
01	17.11.10	BK	DRAFT FOR PART 3A TEST FOR ADEQUACY
02	17.11.10	BK	DRAFT FOR PART 3A TEST FOR ADEQUACY

CENTRAL COAST REGIONAL CANCER CARE CENTRE
 Gosford Hospital Cnr Holden Street and Racecourse Road
 GOSFORD NSW 2250

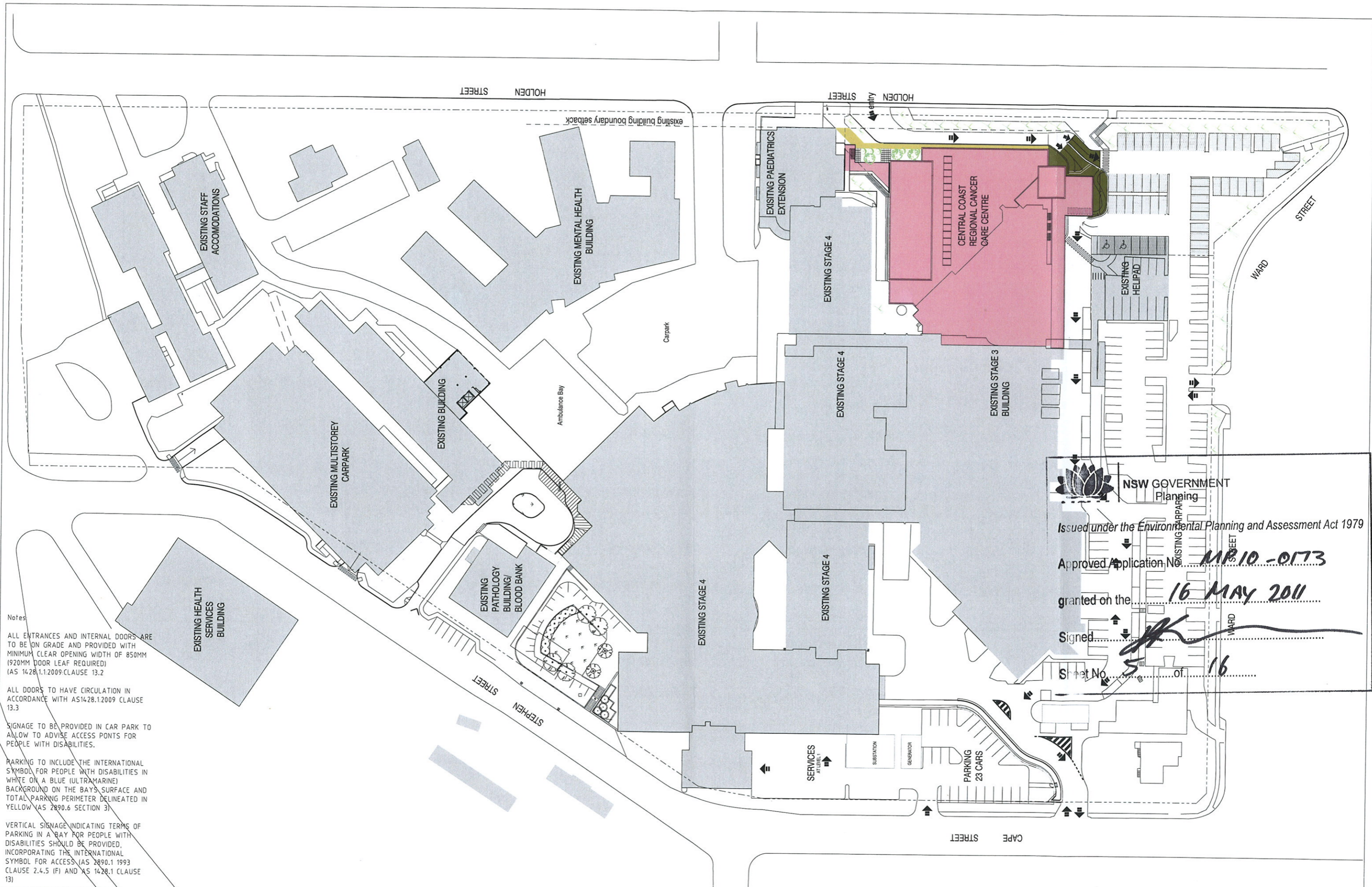
HEALTH INFRASTRUCTURE
 NSW HEALTH

 coffey projects
 SPECIALIST LEADERS AND MANAGERS

TITLE: **URBAN ANALYSIS PLAN**
 SCALE: NTS
 DATE:

silver thomas hanley
 HEALTH ARCHITECTURE
 LEVEL 3, 73 YORK STREET
 SYDNEY NSW 2000
 AUSTRALIA
 T: +61 2 8298 4600
 F: +61 2 8299 4646
 E: sth@sth悉尼.com.au
 W: www.sth.com.au

DRG No: **DoP 04**
 REVISION: **02**



Notes

ALL ENTRANCES AND INTERNAL DOORS ARE TO BE ON GRADE AND PROVIDED WITH MINIMUM CLEAR OPENING WIDTH OF 850MM (920MM DOOR LEAF REQUIRED) (AS 1428.1:2009:CLAUSE 13.2)

ALL DOORS TO HAVE CIRCULATION IN ACCORDANCE WITH AS1428.1:2009 CLAUSE 13.3

SIGNAGE TO BE PROVIDED IN CAR PARK TO ALLOW TO ADVISE ACCESS PONTS FOR PEOPLE WITH DISABILITIES.

PARKING TO INCLUDE THE INTERNATIONAL SYMBOL FOR PEOPLE WITH DISABILITIES IN WHITE ON A BLUE (ULTRAMARINE) BACKGROUND ON THE BAYS SURFACE AND TOTAL PARKING PERIMETER DELINEATED IN YELLOW (AS 2890.6 SECTION 3)

VERTICAL SIGNAGE INDICATING TERMS OF PARKING IN A BAY FOR PEOPLE WITH DISABILITIES SHOULD BE PROVIDED, INCORPORATING THE INTERNATIONAL SYMBOL FOR ACCESS (AS 2890.1 1993 CLAUSE 2.4.5 (F) AND AS 1428.1 CLAUSE 13)

NSW GOVERNMENT
Planning

Issued under the Environmental Planning and Assessment Act 1979

Approved Application No. **MP10-0173**

granted on the **16 MAY 2011**

Signed *[Signature]*

Sheet No. **5** of **16**

rev	date	by	description
01	17.11.10	BK	DRAFT FOR PART 3A TEST FOR ADEQUACY
02	17.11.10	BK	DRAFT FOR PART 3A TEST FOR ADEQUACY
03	04.02.11	JBB	LANDSCAPE AND PEDESTRIAN ACCESS UPDATED, 5 CYCLES BAYS ADDED
04	11.02.11	JBB	DESIGNATED PARKING UPDATED
05	11.02.11	BoM	DESIGNATED PARKING UPDATED

NSW HEALTH CENTRAL COAST REGIONAL
NORTHERN SYDNEY CANCER CARE CENTRE
CENTRAL COAST
AREA HEALTH SERVICE

Gosford Hospital Cnr Holden Street and Racecourse Road
GOSFORD NSW 2250

HEALTH INFRASTRUCTURE
NSW HEALTH

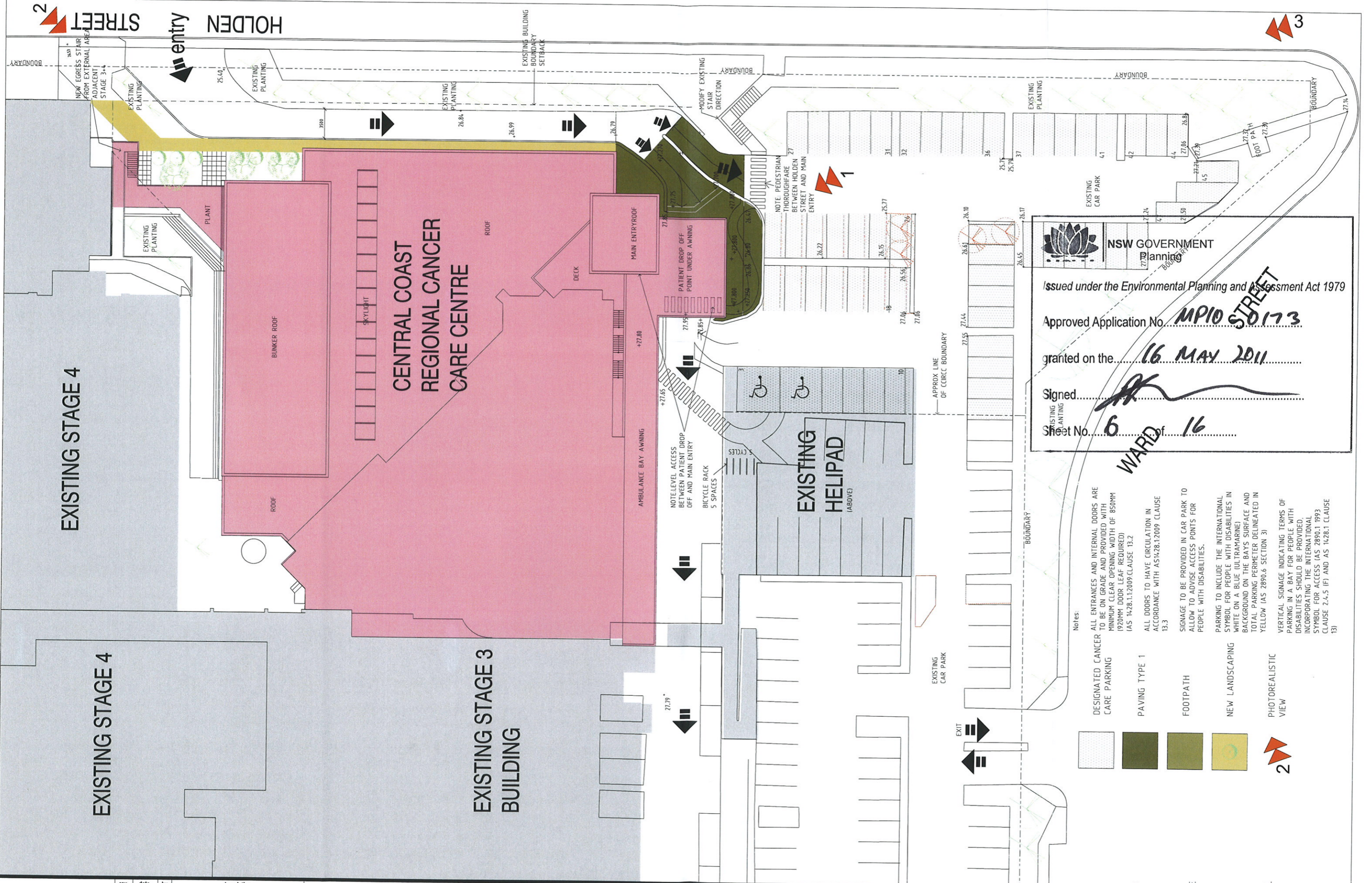
coffey projects
SPECIALIST LEADERS AND MANAGERS

TITLE: **CAMPUS SITE PLAN**
SCALE: **1 : 500**
DATE:

LEVEL 3, 73 YORK STREET
SYDNEY NSW 2000
AUSTRALIA

T. +61 2 8299 4600
F. +61 2 8299 4646
E. sth@sthsydney.com.au
W. www.sth.com.au

DRG No: **DoP 05**
REVISION: **05**



NSW GOVERNMENT
 Planning

Issued under the Environmental Planning and Assessment Act 1979

Approved Application No. **MPI0 50173**

granted on the **16 MAY 2011**

Signed *[Signature]*

Sheet No. **6** of **16**

WARD 16

- Notes:
- DESIGNATED CANCER CARE PARKING
 - PAVING TYPE 1
 - FOOTPATH
 - NEW LANDSCAPING
 - PHOTOREALISTIC VIEW
- ALL ENTRANCES AND INTERNAL DOORS ARE TO BE ON GRADE AND PROVIDED WITH MINIMUM CLEAR OPENING WIDTH OF 850MM (920MM DOOR LEAF REQUIRED) (AS 1428.1:2009/CLAUSE 13.2)
- ALL DOORS TO HAVE CIRCULATION IN ACCORDANCE WITH AS1428.1:2009 CLAUSE 13.3
- SIGNAGE TO BE PROVIDED IN CAR PARK TO ALLOW TO ADVISE ACCESS POINTS FOR PEOPLE WITH DISABILITIES.
- PARKING TO INCLUDE THE INTERNATIONAL SYMBOL FOR PEOPLE WITH DISABILITIES IN WHITE ON A BLUE (ULTRAMARINE) BACKGROUND ON THE BAYS SURFACE AND TOTAL PARKING PERIMETER DELINEATED IN YELLOW (AS 2890.6 SECTION 3)
- VERTICAL SIGNAGE INDICATING TERMS OF PARKING IN A BAY FOR PEOPLE WITH DISABILITIES SHOULD BE PROVIDED, INCORPORATING THE INTERNATIONAL SYMBOL FOR ACCESS (AS 2890.1 1993 CLAUSE 2.4.5 (F) AND AS 1428.1 CLAUSE 13)

rev	date	by	description
01	17.11.10	BK	DRAFT FOR PART 3A TEST FOR ADEQUACY
02	17.11.10	BK	DRAFT FOR PART 3A TEST FOR ADEQUACY
03	04.02.11	JBB	LANDSCAPE AND PEDESTRIAN ACCESS UPDATED, 5 CYCLES ADDED
04	11.02.11	JBB	DESIGNATED PARKING UPDATED
05	15.02.11	Bom	DESIGNATED PARKING UPDATED

NSW HEALTH CENTRAL COAST REGIONAL
NORTHERN SYDNEY CANCER CARE CENTRE
CENTRAL COAST Gosford Hospital Cnr Holden Street and Racecourse Road
AREA HEALTH SERVICE GOSFORD NSW 2250

HEALTH INFRASTRUCTURE
NSW HEALTH

coffey projects
 SPECIALIST LEADERS AND MANAGERS

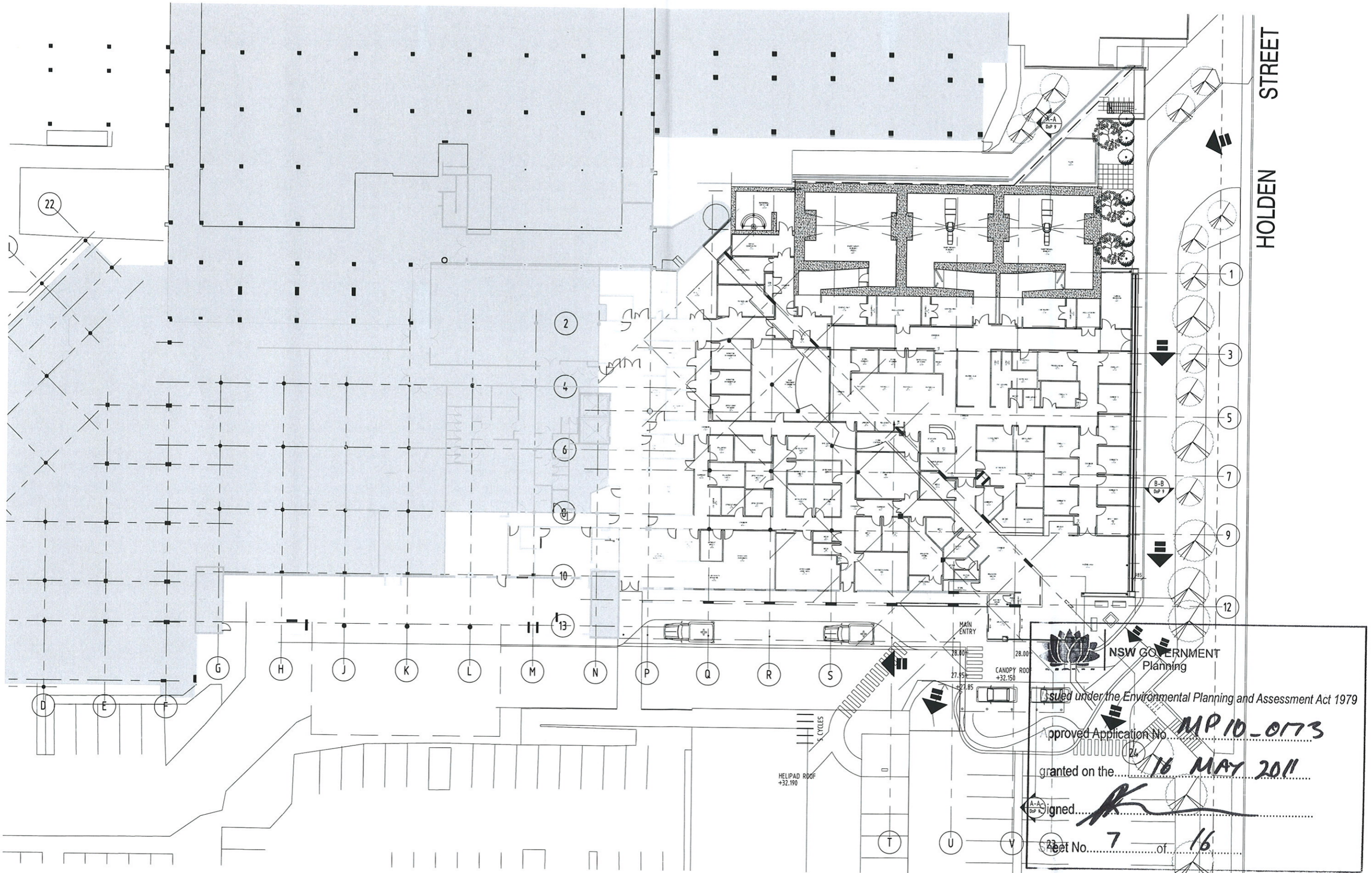
TITLE: DETAILED SITE PLAN
 SCALE: 1 : 200
 DATE:



LEVEL 3, 73 YORK STREET
 SYDNEY NSW 2000
 AUSTRALIA

T. +61 2 8299 4600
 F. +61 2 8299 4646
 E. sth@sthsydney.com.au
 W. www.sth.com.au

DRG No: **DoP 06**
 REVISION: **05**



NSW GOVERNMENT
Planning

Issued under the Environmental Planning and Assessment Act 1979

Approved Application No. **MP 10-0173**

granted on the **16 MAY 2011**

Signed: *[Signature]*

Sheet No. **7** of **16**

REV	DATE	BY	DESCRIPTION
01	17.11.10	BK	DRAFT FOR PART 3A TEST FOR ADEQUACY
02	17.11.10	BK	DRAFT FOR PART 3A TEST FOR ADEQUACY
03	04.02.11	JBB	LANDSCAPE AND PEDESTRIAN ACCESS UPDATED, 5 CYCLES SPACES ADDED

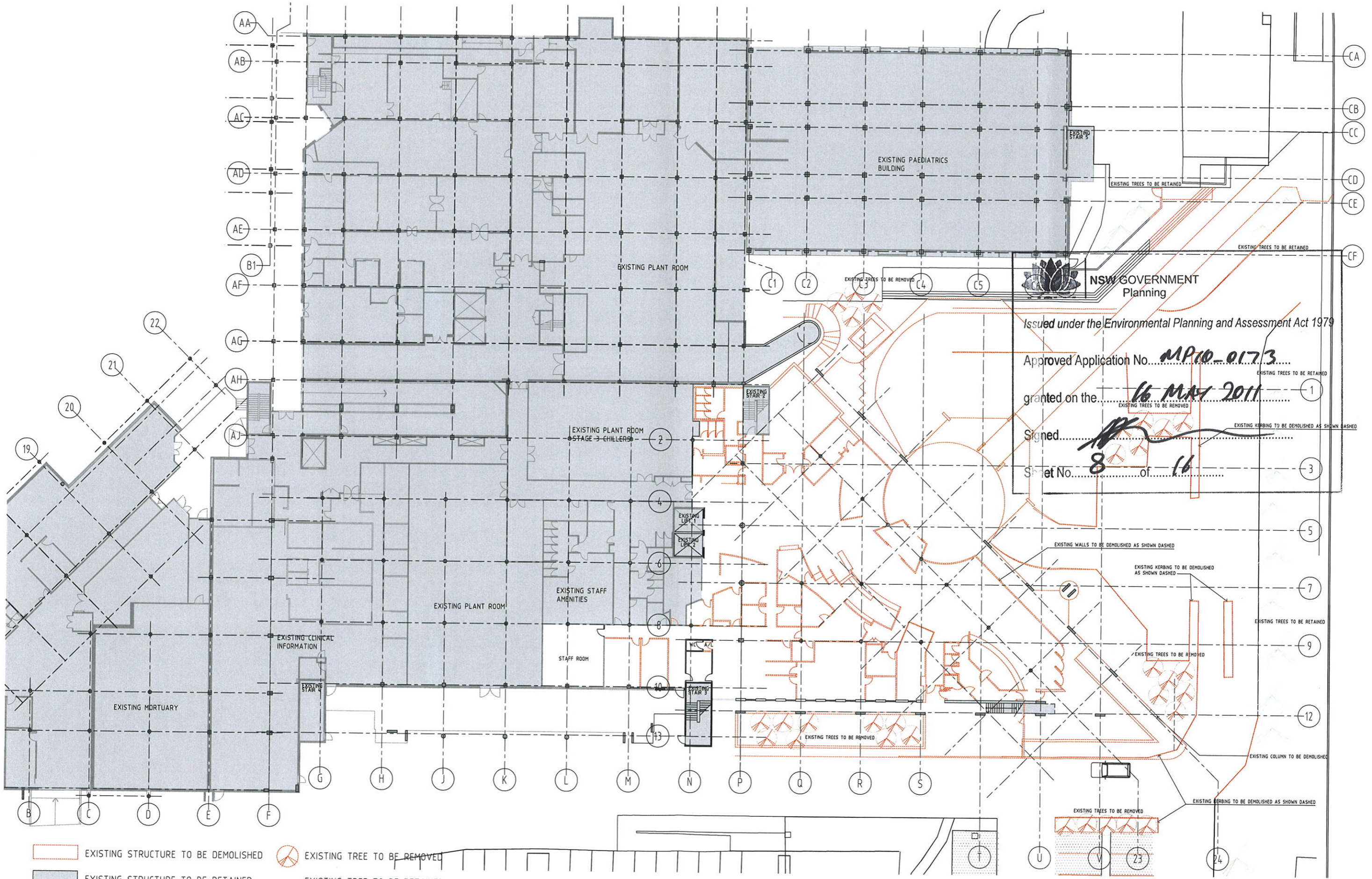
NSW HEALTH CENTRAL COAST REGIONAL
NORTHERN SYDNEY CANCER CARE CENTRE
CENTRAL COAST AREA HEALTH SERVICE
Gosford Hospital Cnr Holden Street and Racecourse Road
GOSFORD NSW 2250

HEALTH INFRASTRUCTURE
NSW HEALTH
coffey projects
SPECIALIST LEADERS AND MANAGERS

TITLE: FLOOR PLAN
SCALE: 1 : 200
DATE:

silver thomas hanley
HEALTH ARCHITECTURE
LEVEL 3, 73 YORK STREET
SYDNEY NSW 2000
AUSTRALIA
T. +61 2 8299 4600
F. +61 2 8299 4646
E: sth@sthsydney.com.au
W: www.sth.com.au

DRG No: **DoP 07**
REVISION: **03**



NSW GOVERNMENT
Planning

Issued under the Environmental Planning and Assessment Act 1979

Approved Application No. **MP10-0173**

granted on the **16 MAY 2011**

Signed *[Signature]*

Sheet No. **8** of **16**

EXISTING STRUCTURE TO BE DEMOLISHED
 EXISTING STRUCTURE TO BE RETAINED

EXISTING TREE TO BE REMOVED
 EXISTING TREE TO BE RETAINED

rev	date	by	description
01	17.11.10	BOM	DRAFT FOR PART 3A TEST FOR ADEQUACY
02	17.11.10	BOM	DRAFT FOR PART 3A TEST FOR ADEQUACY

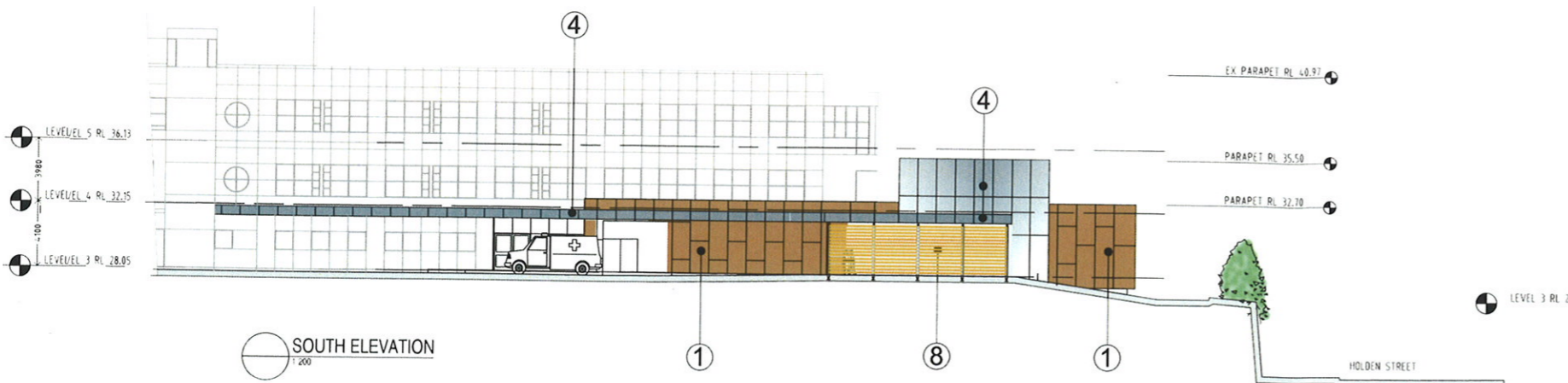
**CENTRAL COAST REGIONAL
CANCER CARE CENTRE**
 Gosford Hospital Cnr Holden Street and Racecourse Road
 GOSFORD NSW 2250

**HEALTH INFRASTRUCTURE
NSW HEALTH**
COFFEY PROJECTS
 SPECIALIST LEADERS AND MANAGERS

TITLE: DEMOLITION PLAN
SCALE: 1 : 200
DATE:


**SILVER THOMAS HANLEY
HEALTH ARCHITECTURE**
 LEVEL 3, 73 YORK STREET
 SYDNEY NSW 2000
 AUSTRALIA
 T. +61 2 8299 4600
 F. +61 2 8299 4646
 E: sth@sth悉尼.com.au
 W: www.sth.com.au

DRG No: DoP 08
REVISION: 02



- ① aluminium composite panel (copper)
- ② off form concrete
- ③ fixed fin louvres
- ④ standing seam or panelled zinc cladding
- ⑤ glazing - green tinted
- ⑥ louvres - grey powdercoat
- ⑦ aluminium composite panel (to match adjacent)
- ⑧ timber louvre screen


(NOTE REFER TO DoP 13 FOR SAMPLE BOARD)

 **NSW GOVERNMENT**
Planning

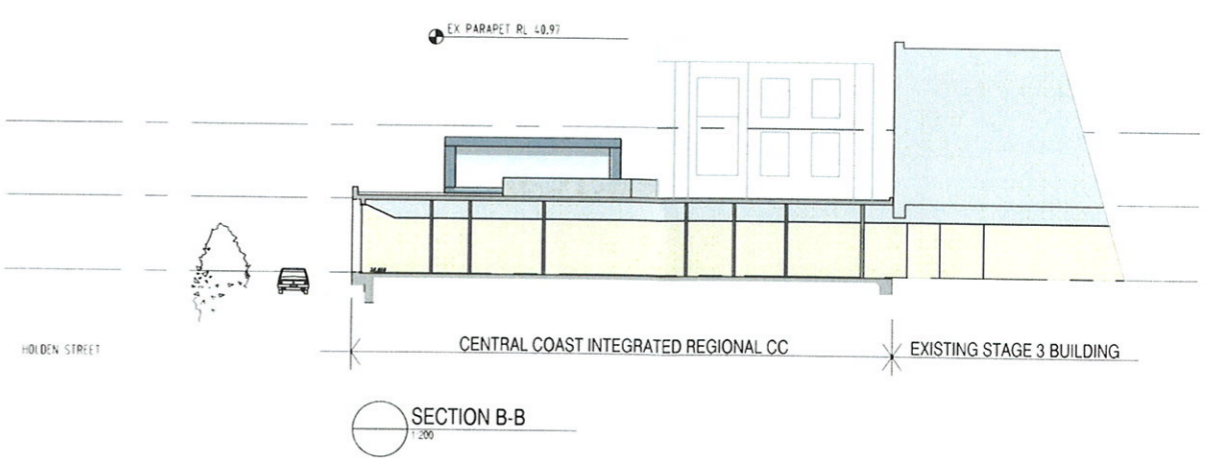
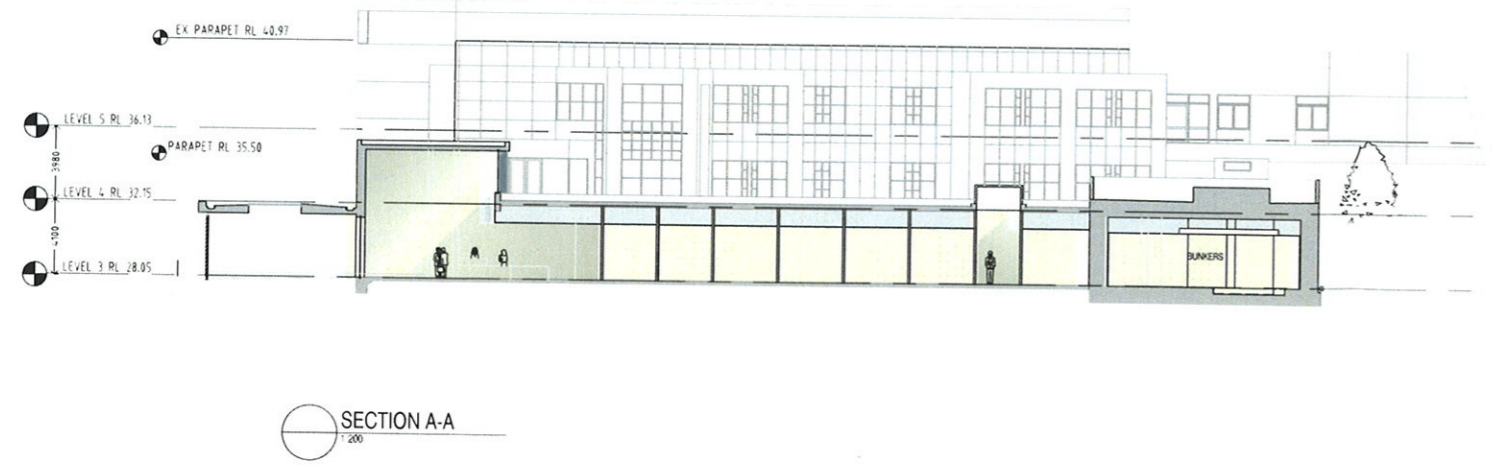
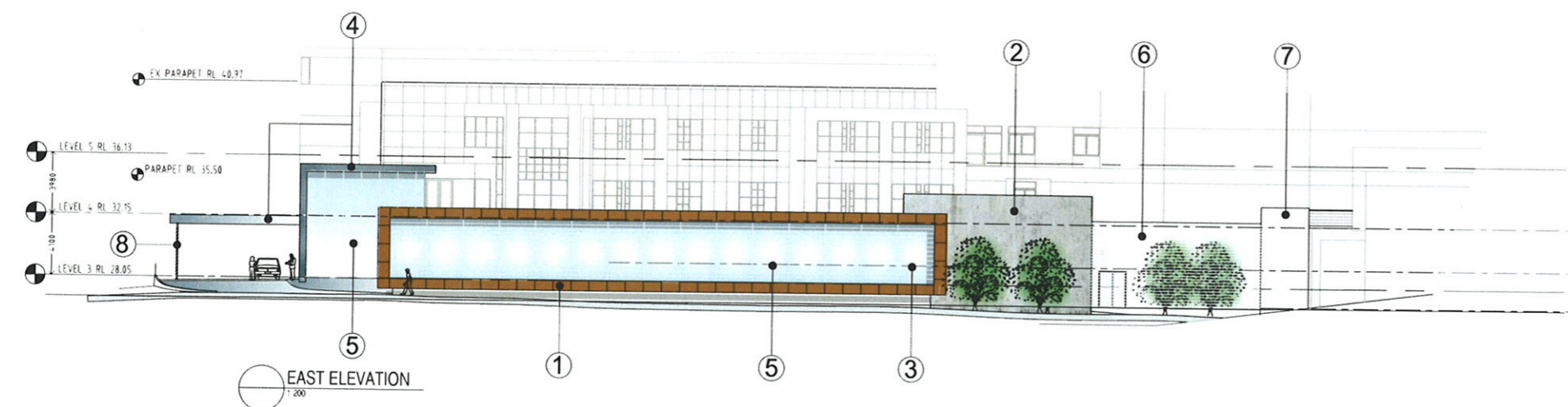
Issued under the Environmental Planning and Assessment Act 1979

Approved Application No. MP10-0173

granted on the 16 MAY 2014

Signed 

Sheet No. 9 of 16



rev	date	by	description
01	17.11.10	BoM	DRAFT FOR PART 3A TEST FOR ADEQUACY
02	17.11.10	BoM	DRAFT FOR PART 3A TEST FOR ADEQUACY
03	14.02.11	BoM	REVISED TO INCLUDE CANOPY EXTENSION AND FRONT ENTRY LANDSCAPE AREA

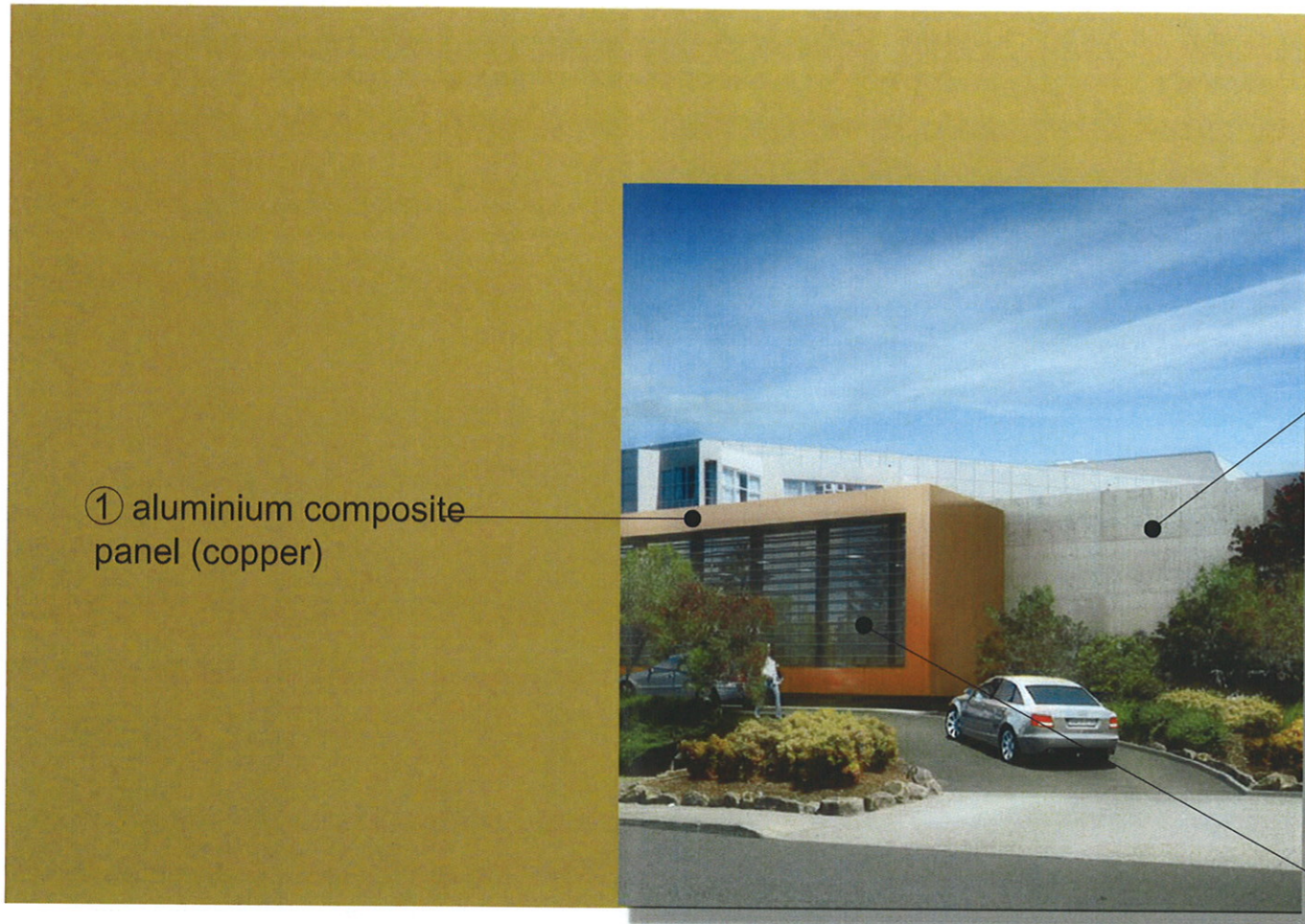
NSW HEALTH CENTRAL COAST REGIONAL
NORTHERN SYDNEY CANCER CARE CENTRE
CENTRAL COAST AREA HEALTH SERVICE
Gosford Hospital Cnr Holden Street and Racecourse Road
GOSFORD NSW 2250

 **HEALTH INFRASTRUCTURE**
NSW HEALTH
 **projects**
SPECIALIST LEADERS AND MANAGERS

TITLE: ELEVATIONS & SECTIONS
SCALE: 1 : 200
DATE:

 **silver thomas hanley**
HEALTH ARCHITECTURE
LEVEL 3, 73 YORK STREET
SYDNEY NSW 2000
AUSTRALIA
T. +61 2 8299 4600
F. +61 2 8299 4646
E. sth@sth.com.au
W. www.sth.com.au

DRG No: **DoP 09**
REVISION: **03**



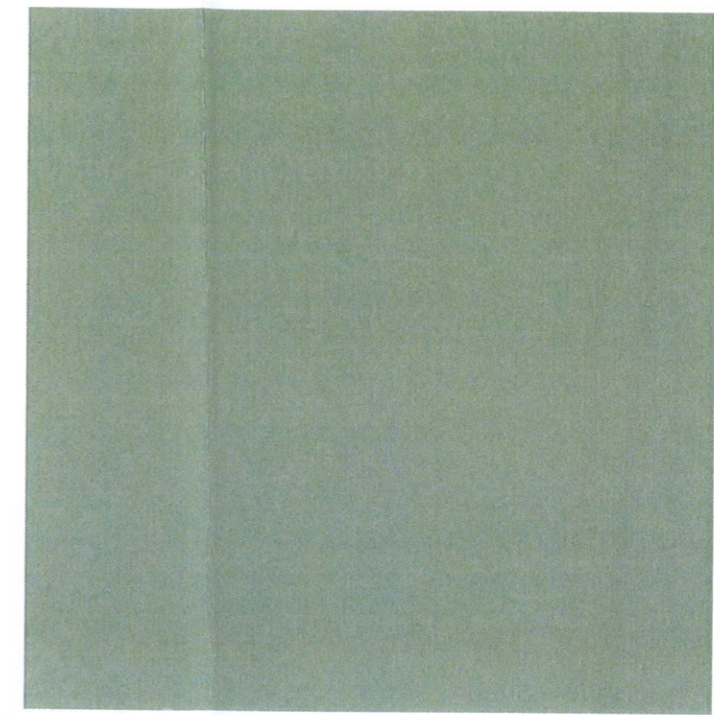
① aluminium composite panel (copper)



② off form concrete



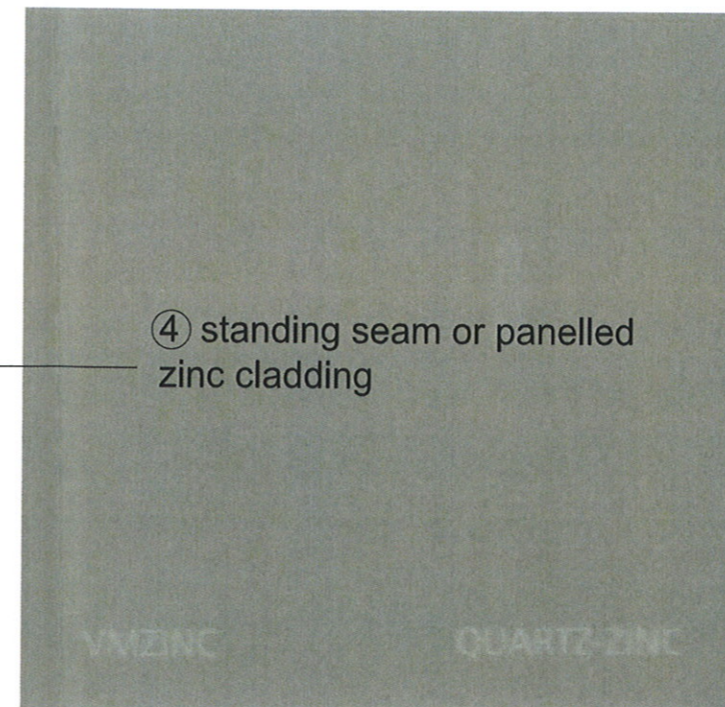
③ fixed fin louvres



⑤ glazing - green tinted



④ standing seam or panelled zinc cladding



Issued under the Environmental Planning and Assessment Act 1979

Approved Application No. MP10-0173

granted on the 16 MAY 2011

Signed [Signature]

Sheet No. 10 of 16

rev	date	by	description
01	17.11.10	BK	DRAFT FOR PART 3A TEST FOR ADEQUACY
02	17.11.10	BK	DRAFT FOR PART 3A TEST FOR ADEQUACY
03	14.02.11	BOM	REVISED TO INCLUDE CANOPY EXTENSION AND FRONT ENTRY LANDSCAPE AREA

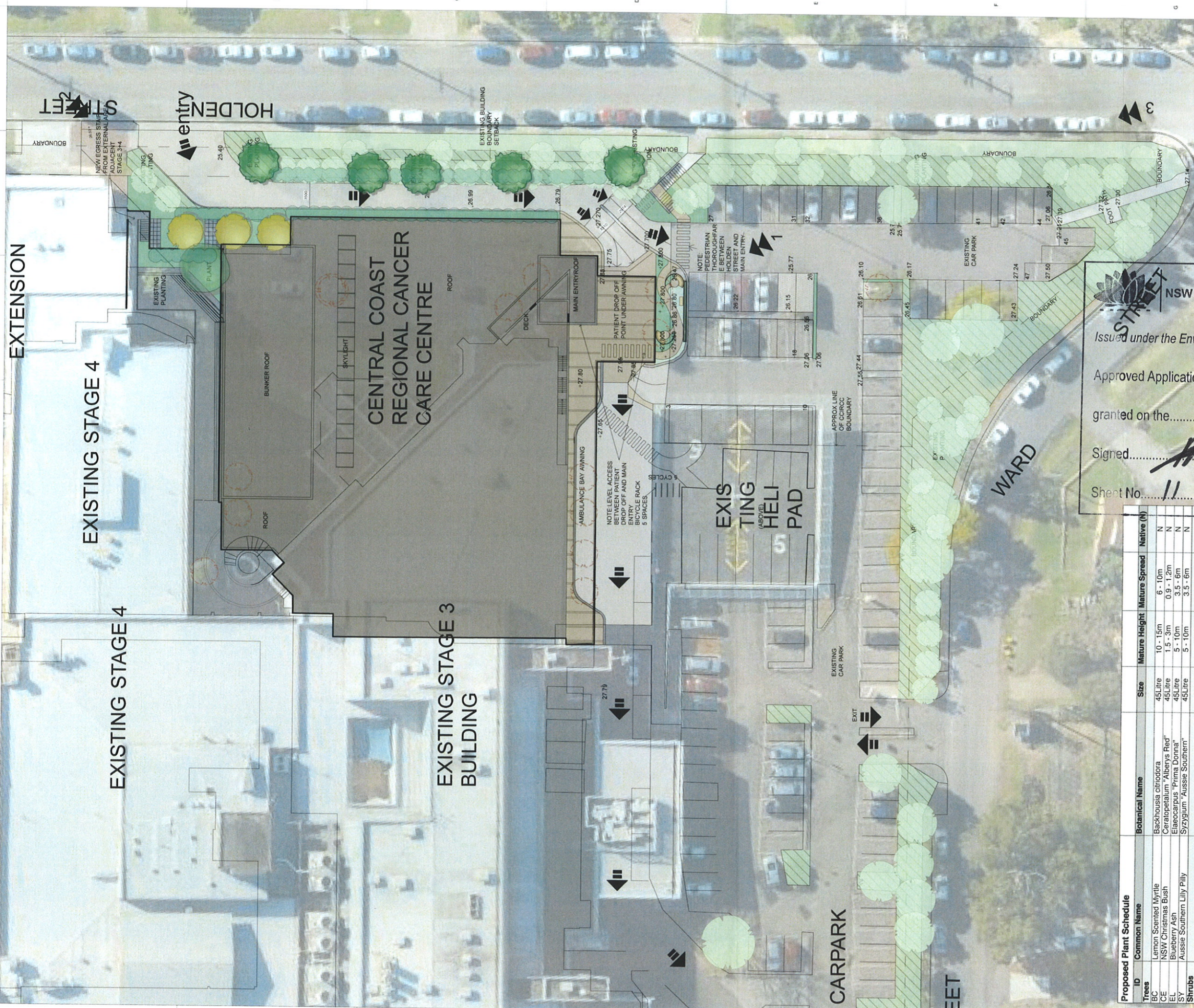
NSW HEALTH CENTRAL COAST REGIONAL
NORTHERN SYDNEY CANCER CARE CENTRE
CENTRAL COAST Gosford Hospital Cnr Holden Street and Racecourse Road
 AREA HEALTH SERVICE GOSFORD NSW 2250

NSW GOVERNMENT HEALTH INFRASTRUCTURE
NSW HEALTH
coffey projects SPECIALIST LEADERS AND MANAGERS

TITLE: SAMPLE BOARD
 SCALE: NTS
 DATE:

silver thomas hanley HEALTH ARCHITECTURE
 LEVEL 3, 73 YORK STREET
 SYDNEY NSW 2000
 AUSTRALIA
 T. +61 2 8299 4600
 F. +61 2 8299 4646
 E: sth@sth.com.au
 W: www.sth.com.au

DRG No: **DoP 13**
 REVISION: **03**



NSW GOVERNMENT Planning

Issued under the Environmental Planning and Assessment Act 1979

Approved Application No. **MP10-0173**

granted on the **16 MAY 2011**

Signed

Sheet No. **11** of **16**

Proposed ID	Common Name	Botanical Name	Size	Mature Height	Mature Spread	Native (N)
Trees						
BC	Lemon Scented Myrtle	Backhousia citrifolia	45Litre	10 - 15m	6 - 10m	N
CE	NSW Christmas Bush	Ceratopetalum 'Alberys Red'	45Litre	1.5 - 3m	0.9 - 1.2m	N
EL	Blueberry Ash	Elaeocarpus 'Prima Donna'	45Litre	5 - 10m	3.5 - 6m	N
SY	Aussie Southern Lily Pilly	Syzygium 'Aussie Southern'	45Litre	5 - 10m	3.5 - 6m	N
Shrubs						
AH	Dwarf Lily Pilly	Acmena 'Hedge Master'	200mm	0.8 - 1.0m	0.8 - 1.0m	N
BD	Heath-leaved Banksia	Banksia ericifolia dwarf	200mm	3 - 5m	3.5 - 6m	N
DE	Gymea Lily, Giant Lily	Doyanthes excelsa	200mm	1.5 - 3m	1.2 - 2.0m	N
GH	Grevillea	Grevillea 'Honey Gem'	200mm	1.5 - 3m	1.2 - 2.0m	N
GS	Superb Grevillea	Grevillea x 'Superb'	200mm	1.5 - 3m	1.2 - 2.0m	N
SA	Bush Christmas	Syzygium australe 'Bush Christmas'	200mm	1.5 - 3m	1.2 - 2.0m	N
WF	Coastal Rosemary	Westringia fruticosa 'Naringa'	200mm	0.9 - 1.5m	0.9 - 1.2m	N
Native Grasses & Ground Covers						
AF	Kangaroo Paw 'Gold Velvet'	Angozaanthos 'Gold Velvet'	150mm	0.75 - 0.9m	0.3 - 0.6m	N
CJ	Prickly Grevillea	Grevillea lupperina	150mm	0.6 - 0.75m	2.0 - 3.5m	N
DR	Spreading Flax Lily	Dianella revoluta 'Little Rev'	150mm	0.3 - 0.45m	0.3 - 0.6m	N
DT	Flax Lily	Dianella tasmanica 'Isred'	150mm	0.75 - 0.9m	0.0 - 0.3m	N
LT	Spiny-headed mat rush	Lomandra longifolia 'Tanika'	150mm	0.45 - 0.9m	0.6 - 0.9m	N
HV	False Sarsaparilla	Hardenbergia violacea	150mm	0.75 - 0.9m	1.2 - 2.0m	N
MY	Carpet Spreading Myoporum	Myoporum parvifolium 'Yareena'	150mm	0.45 - 0.6m	0.9 - 1.2m	N
TJ	Star Jasmine	Trachelospermum jasminoides	150mm	3 - 5m	3.5 - 6m	N
WM	Mundi	Westringia fruticosa 'Mundi'	150mm	0.45 - 0.6m	0.9 - 1.2m	N

PROJECT: **CENTRAL COAST REGIONAL CANCER CARE CENTRE (Gosford Hospital)**
 10 Holden St & Racecourse Rd Gosford NSW 2250

PREPARED BY:
GREENLAND DESIGN PTY LTD
 ABN 73 139 152 855
 Landscape Architect: C. Ly I AILA
 Mob.: 0403 164 198

CLIENT: **SILVER THOMAS HANLEY HEALTH ARCHITECTURE**

TITLE: **LANDSCAPE CONCEPT PLAN**

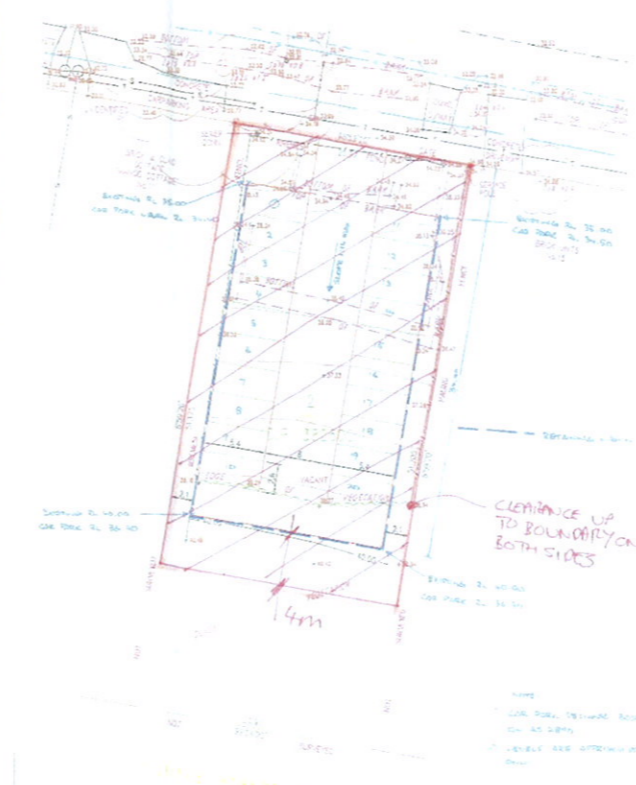
DRAWN BY: **CL** SCALE: **1:250 (A1)** DATE: **14/02/11**

NO. **DoP 14** AMD. **D**

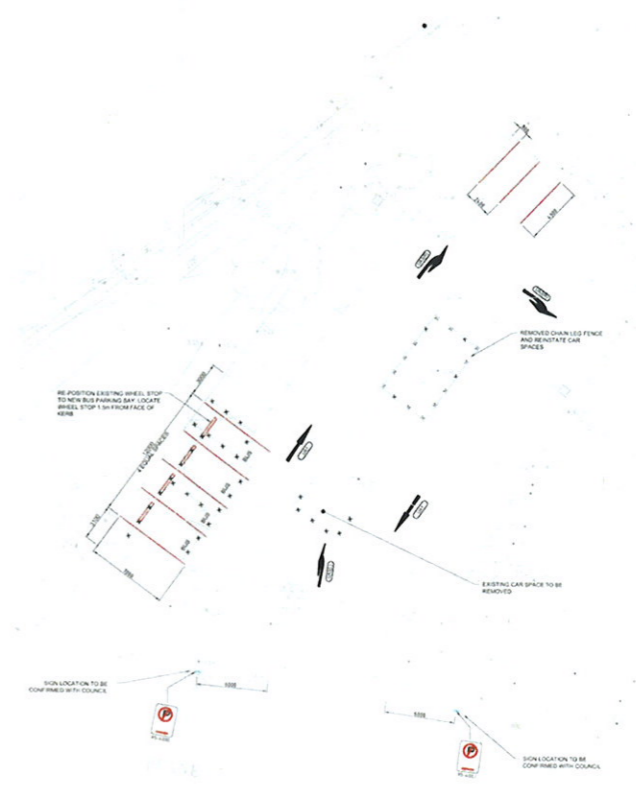
REV	DESCRIPTION	DATE
D	Revised to include canopy extension, 15/02/10 and new green space at entry	15/02/10
C	Draft for Part 3A Test for Adequacy	17/11/10
B	Draft for Part 3A Test for Adequacy	17/11/10
A	Concept Plan	20/10/10



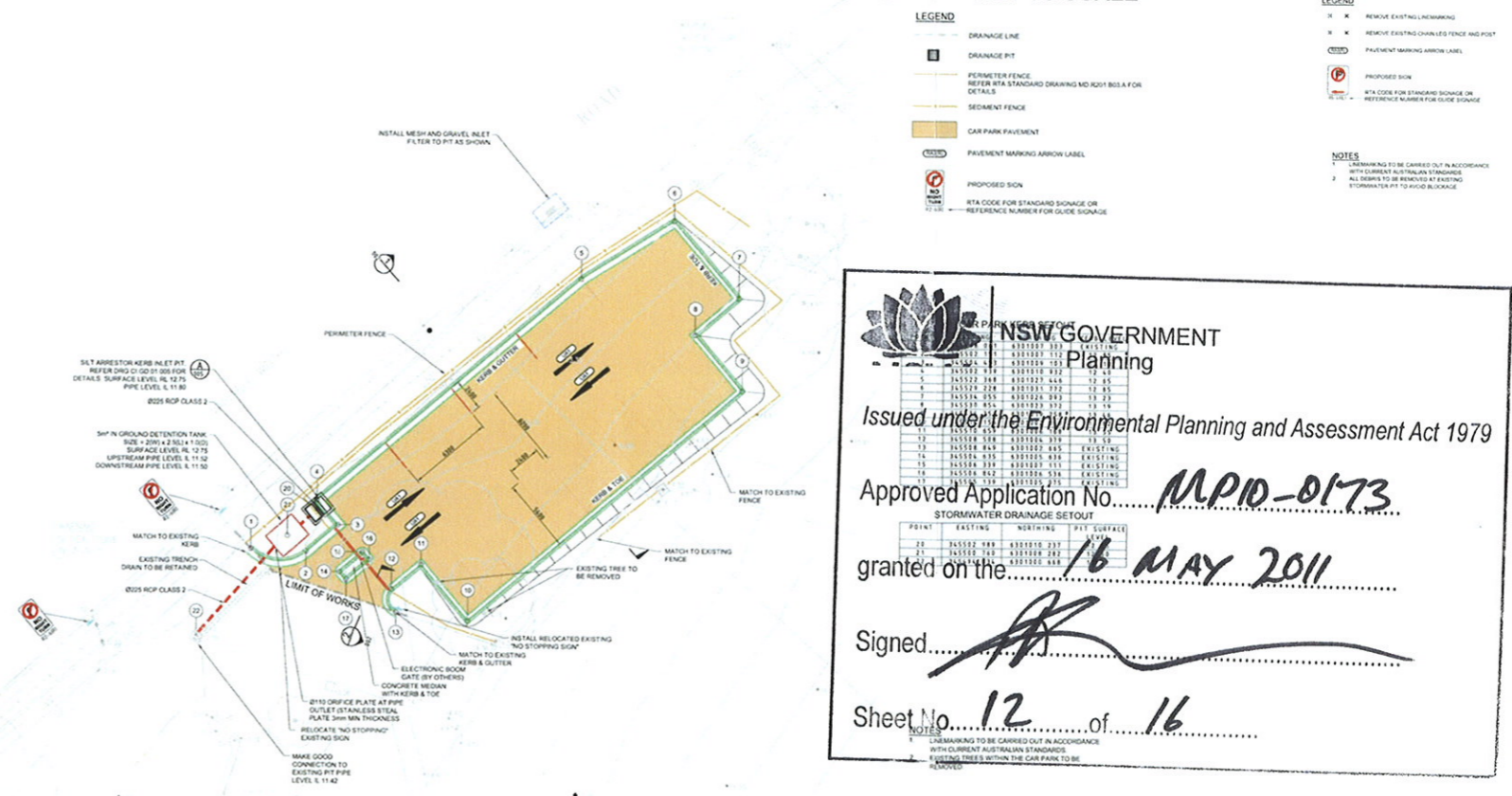
CAMPUS AERIAL PHOTOGRAPH



WARD STREET CARPARK TOTAL NUMBER OF NEW SPACES - 20 NOT TO SCALE



BEANE STREET CARPARK - TOTAL NUMBER OF NEW SPACES - 8 NOT TO SCALE



CARPARK ADJACENT HOSPITAL FLEET TOTAL NUMBER OF NEW SPACES - 15 NOT TO SCALE

NSW GOVERNMENT Planning

Issued under the Environmental Planning and Assessment Act 1979

Approved Application No. **MP10-0173**

STORMWATER DRAINAGE SETOUT

granted on the **16 MAY 2011**

Signed *[Signature]*

Sheet No. **12** of **16**

rev	date	by	description
01	11.11.10	SM	ISSUE FOR PART 1A PRELIMINARY APPROVAL
02	17.11.10	SM	ISSUE FOR PART 1A PRELIMINARY APPROVAL
03	16.07.11	SM	ISSUE FOR PART 1A PRELIMINARY APPROVAL

rev	date	by	description
01	11.11.10	SM	ISSUE FOR PART 1A PRELIMINARY APPROVAL
02	17.11.10	SM	ISSUE FOR PART 1A PRELIMINARY APPROVAL
03	16.07.11	SM	ISSUE FOR PART 1A PRELIMINARY APPROVAL

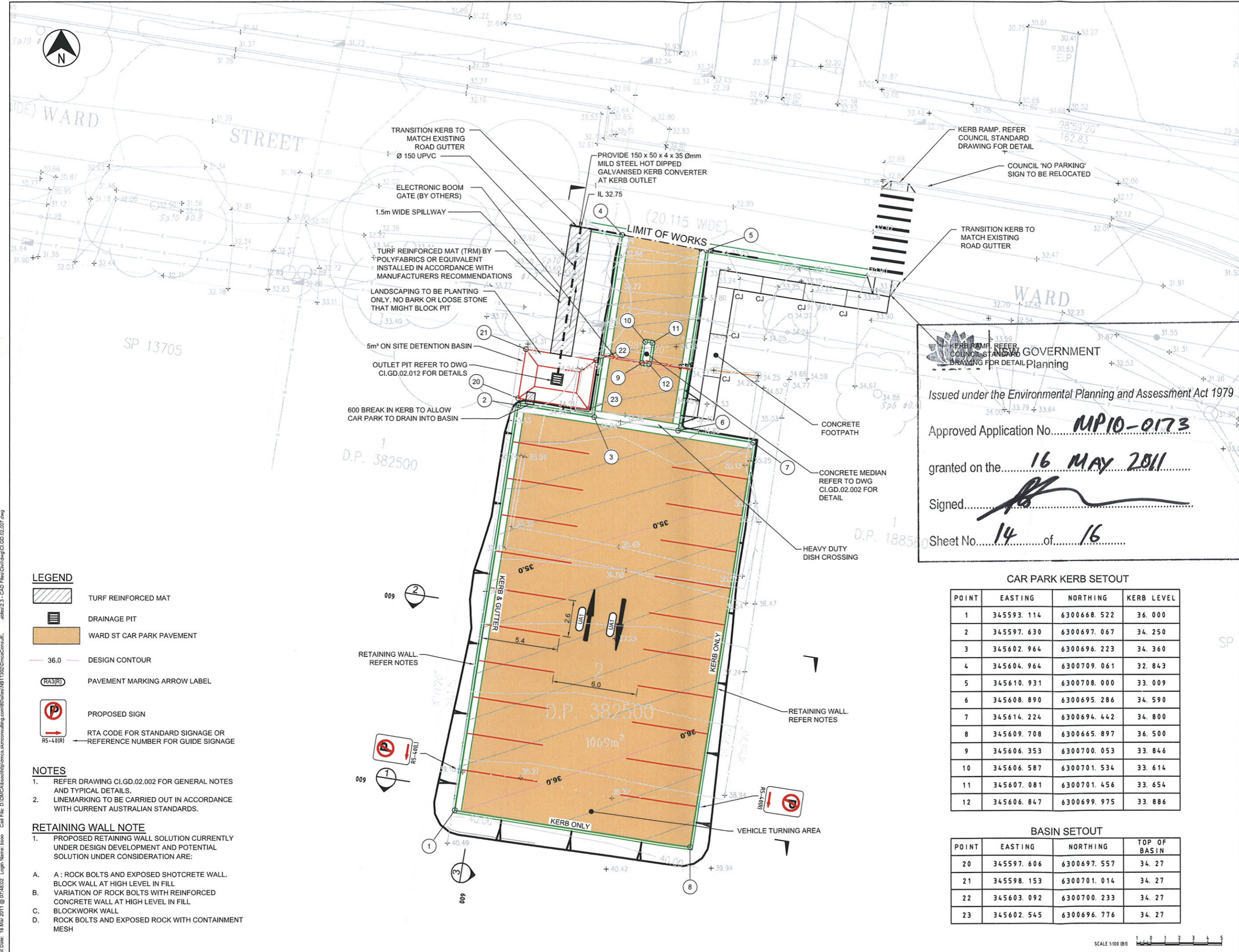
NSW HEALTH CENTRAL COAST REGIONAL
NORTHERN SYDNEY CANCER CARE CENTRE
CENTRAL COAST Gosford Hospital Cnr Holden Street and Racecourse Road
AREA HEALTH SERVICE GOSFORD NSW 2250

HEALTH INFRASTRUCTURE
NSW HEALTH
 coffey projects
 SPECIALIST LEADERS AND MANAGERS

TITLE: **CARPARK ALLOCATION PLAN**
 SCALE: **NTS**
 DATE:

LEVEL 3, 73 YORK STREET
 SYDNEY NSW 2000
 AUSTRALIA
 T. +61 2 8299 4600
 F. +61 2 8299 4646
 E. sth@sth.com.au
 W. www.sth.com.au

DRG No: **DoP 15**
 REVISION: **04**



CONTRACTORS MUST VERIFY ALL DIMENSIONS ON THE SITE BEFORE COMMENCING ANY WORK OR MAKING ANY SHIP. DRAWING MUST BE SUBMITTED AND REVIEWED BEFORE MANUFACTURE

KEY PLAN

REVISION	AMENDMENT	DATE	DRAWN
01	ISSUE FOR CLIENT REVIEW	08/11/11	MMJ
02	DRAFT ISSUE	08/11/11	MMJ

Issued under the Environmental Planning and Assessment Act 1979

 Approved Application No. **MP10-0173**

 granted on the **16 MAY 2011**

 Signed

 Sheet No. **14** of **16**

- LEGEND**
- TURF REINFORCED MAT
 - DRAINAGE PIT
 - WARD ST CAR PARK PAVEMENT
 - 36.0 DESIGN CONTOUR
 - PAVEMENT MARKING ARROW LABEL
 - PROPOSED SIGN
 - RTA CODE FOR STANDARD SIGNAGE OR REFERENCE NUMBER FOR GUIDE SIGNAGE

- NOTES**
- REFER DRAWING CI.GD.02.002 FOR GENERAL NOTES AND TYPICAL DETAILS.
 - LINEMARKING TO BE CARRIED OUT IN ACCORDANCE WITH CURRENT AUSTRALIAN STANDARDS.

- RETAINING WALL NOTE**
- PROPOSED RETAINING WALL SOLUTION CURRENTLY UNDER DESIGN DEVELOPMENT AND POTENTIAL SOLUTION UNDER CONSIDERATION ARE:
 - A. A : ROCK BOLTS AND EXPOSED SHOTCRETE WALL. BLOCK WALL AT HIGH LEVEL IN FILL
 - B. VARIATION OF ROCK BOLTS WITH REINFORCED CONCRETE WALL AT HIGH LEVEL IN FILL
 - C. BLOCKWORK WALL
 - D. ROCK BOLTS AND EXPOSED ROCK WITH CONTAINMENT MESH

CAR PARK KERB SETOUT

POINT	EASTING	NORTHING	KERB LEVEL
1	345593.114	6300668.522	36.000
2	345597.630	6300697.067	34.250
3	345602.964	6300696.223	34.360
4	345604.964	6300709.061	32.843
5	345610.931	6300708.000	33.009
6	345608.890	6300695.286	34.590
7	345614.224	6300694.442	34.800
8	345609.708	6300665.897	36.500
9	345606.353	6300700.053	33.846
10	345606.587	6300701.534	33.614
11	345607.081	6300701.456	33.654
12	345606.847	6300699.975	33.886

BASIN SETOUT

POINT	EASTING	NORTHING	TOP OF BASIN
20	345597.606	6300697.557	34.27
21	345598.153	6300701.014	34.27
22	345603.092	6300700.233	34.27
23	345602.545	6300696.776	34.27

silver thomas hanley

 HEALTH ARCHITECTURE

 Level 3, 73 York Street Sydney, 2000

 PH: (02) 909 4100 FAX: (02) 909 4101

 THIS ARCHITECTURAL DESIGN IS THE COPYRIGHT OF SILVER THOMAS HANLEY ARCHITECTS PTY LTD ABN 21 134 478 005 AND SHALL NOT BE REPRODUCED WITHOUT THEIR WRITTEN PERMISSION

 CLIENT

 NSW HEALTH

 NORTHERN SYDNEY

 CENTRAL COAST

 AREA HEALTH SERVICE

 HEALTH INFRASTRUCTURE

 NSW HEALTH

 PROJECT MANAGER

 coffey projects

 SPECIALIST LEADERS AND MANAGERS

 Level 10, 81 Forest

 1 Market Street Sydney NSW 2000

 PH: (02) 9297 2100

 CONSULTANTS

 SPP GROUP

 Hydrological For Environmental

 SKM

 STEENZEN VARMING

 PROJECT

 CENTRAL COAST REGIONAL

 CANCER CENTRE

 GOSFORD HOSPITAL

 DRAWING TITLE

 DETAILED DESIGN

 WARD STREET CARPARK

 GENERAL ARRANGEMENT PLAN

 SCALE DATE DRAWN DRAWN BY CHECKED

 1:100 07.03.11 MMJ B.S

 PROJECT NO. DRAWING NO. REVISION

 NB11302 CI.GD.02.007 02

 DRAWING STATUS

 DESIGN DEVELOPMENT

Plot Date: 16 Mar 2011 @ 07:46:02 Logon Name: baso Cad File: D:\DMC\A\workspace\p1302\dmca\ci.gd.02.007.dwg

