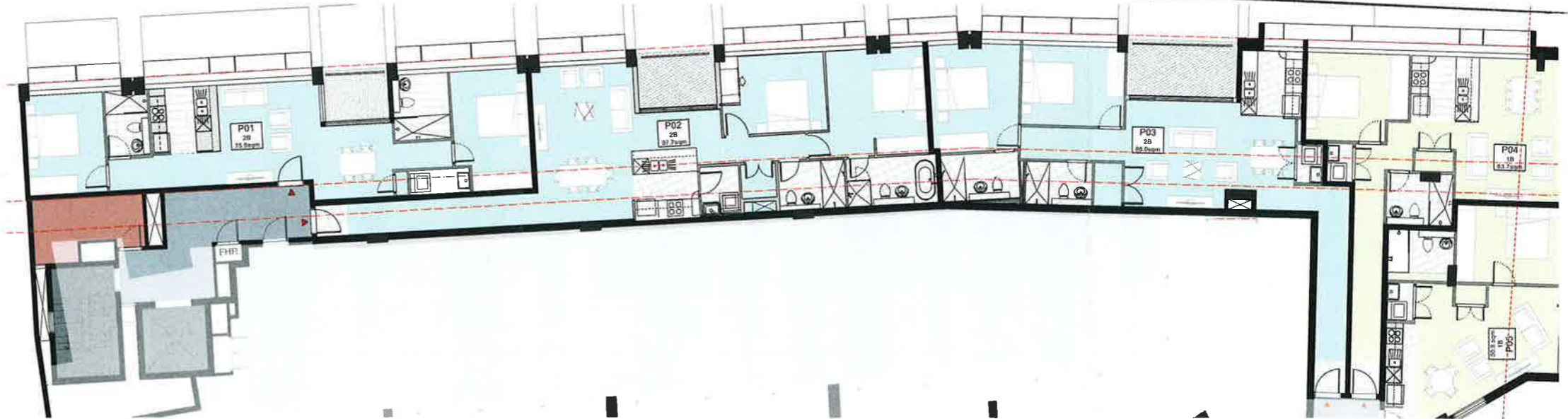
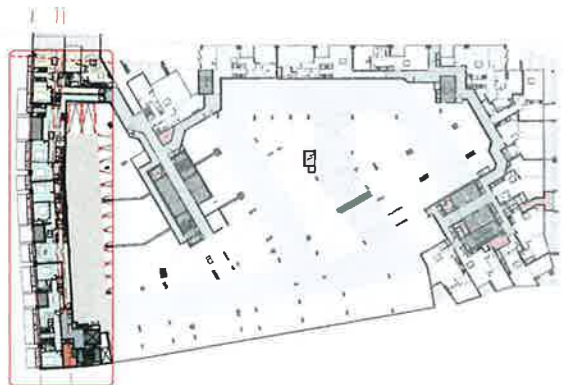


01 PLAN - PODIUM LEVELS 1-3
1:100

NSW GOVERNMENT
Planning
Made under the Environmental Planning and Assessment Act 1979
Approved Section 75W Modification Application
No. 6 granted on the 29 June 2015
in respect to MP 10-0171
Signed [Signature]
Sheet No. 31 of 38



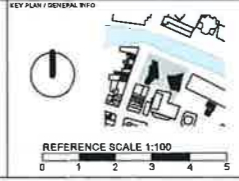
02 PLAN - PODIUM LEVELS 1-3
1:100

DRAWING PREPARED FOR
MERITON
MERITON APARTMENTS
LEVEL 11, MERITON TOWER
528 KENT STREET, SYDNEY
BY
TONY CARO ARCHITECTURE PTY LTD
LEVEL 1, 2 CLEN ST WILSONS POINT
NSW 2061 SYDNEY AUSTRALIA
T 99649100 F 99649133
WWW.TONYCAROARCHITECTURE.COM.AU

ISSUE NUMBER	REVISION REGISTER	LEADER
01	24/01/14 Revised after Application	RD
02	11/02/14 Approved for Construction	RD
03	03/11/14 Revised after Application	RD
04	11/02/14 Approved for Construction	RD
05	11/02/14 Approved for Construction	RD
06	11/02/14 Approved for Construction	RD
07	11/02/14 Approved for Construction	RD
08	11/02/14 Approved for Construction	RD
09	11/02/14 Approved for Construction	RD
10	11/02/14 Approved for Construction	RD
11	11/02/14 Approved for Construction	RD
12	11/02/14 Approved for Construction	RD
13	11/02/14 Approved for Construction	RD
14	11/02/14 Approved for Construction	RD
15	11/02/14 Approved for Construction	RD
16	11/02/14 Approved for Construction	RD
17	11/02/14 Approved for Construction	RD
18	11/02/14 Approved for Construction	RD
19	11/02/14 Approved for Construction	RD
20	11/02/14 Approved for Construction	RD
21	11/02/14 Approved for Construction	RD
22	11/02/14 Approved for Construction	RD
23	11/02/14 Approved for Construction	RD
24	11/02/14 Approved for Construction	RD
25	11/02/14 Approved for Construction	RD
26	11/02/14 Approved for Construction	RD
27	11/02/14 Approved for Construction	RD
28	11/02/14 Approved for Construction	RD
29	11/02/14 Approved for Construction	RD
30	11/02/14 Approved for Construction	RD
31	11/02/14 Approved for Construction	RD
32	11/02/14 Approved for Construction	RD
33	11/02/14 Approved for Construction	RD
34	11/02/14 Approved for Construction	RD
35	11/02/14 Approved for Construction	RD
36	11/02/14 Approved for Construction	RD
37	11/02/14 Approved for Construction	RD
38	11/02/14 Approved for Construction	RD
39	11/02/14 Approved for Construction	RD
40	11/02/14 Approved for Construction	RD
41	11/02/14 Approved for Construction	RD
42	11/02/14 Approved for Construction	RD
43	11/02/14 Approved for Construction	RD
44	11/02/14 Approved for Construction	RD
45	11/02/14 Approved for Construction	RD
46	11/02/14 Approved for Construction	RD
47	11/02/14 Approved for Construction	RD
48	11/02/14 Approved for Construction	RD
49	11/02/14 Approved for Construction	RD
50	11/02/14 Approved for Construction	RD
51	11/02/14 Approved for Construction	RD
52	11/02/14 Approved for Construction	RD
53	11/02/14 Approved for Construction	RD
54	11/02/14 Approved for Construction	RD
55	11/02/14 Approved for Construction	RD
56	11/02/14 Approved for Construction	RD
57	11/02/14 Approved for Construction	RD
58	11/02/14 Approved for Construction	RD
59	11/02/14 Approved for Construction	RD
60	11/02/14 Approved for Construction	RD
61	11/02/14 Approved for Construction	RD
62	11/02/14 Approved for Construction	RD
63	11/02/14 Approved for Construction	RD
64	11/02/14 Approved for Construction	RD
65	11/02/14 Approved for Construction	RD
66	11/02/14 Approved for Construction	RD
67	11/02/14 Approved for Construction	RD
68	11/02/14 Approved for Construction	RD
69	11/02/14 Approved for Construction	RD
70	11/02/14 Approved for Construction	RD
71	11/02/14 Approved for Construction	RD
72	11/02/14 Approved for Construction	RD
73	11/02/14 Approved for Construction	RD
74	11/02/14 Approved for Construction	RD
75	11/02/14 Approved for Construction	RD
76	11/02/14 Approved for Construction	RD
77	11/02/14 Approved for Construction	RD
78	11/02/14 Approved for Construction	RD
79	11/02/14 Approved for Construction	RD
80	11/02/14 Approved for Construction	RD
81	11/02/14 Approved for Construction	RD
82	11/02/14 Approved for Construction	RD
83	11/02/14 Approved for Construction	RD
84	11/02/14 Approved for Construction	RD
85	11/02/14 Approved for Construction	RD
86	11/02/14 Approved for Construction	RD
87	11/02/14 Approved for Construction	RD
88	11/02/14 Approved for Construction	RD
89	11/02/14 Approved for Construction	RD
90	11/02/14 Approved for Construction	RD
91	11/02/14 Approved for Construction	RD
92	11/02/14 Approved for Construction	RD
93	11/02/14 Approved for Construction	RD
94	11/02/14 Approved for Construction	RD
95	11/02/14 Approved for Construction	RD
96	11/02/14 Approved for Construction	RD
97	11/02/14 Approved for Construction	RD
98	11/02/14 Approved for Construction	RD
99	11/02/14 Approved for Construction	RD
100	11/02/14 Approved for Construction	RD

KEY CONSULTANT INFO	KEY CONSULTANT INFO	KEY CONSULTANT INFO
LANDSCAPE GUY STURT & ASSOC GUY STURT 9211 3744 guy@sturtassoc.com.au	BASE EFFICIENT LIVING TRACEY COOPER 9549 0332 tracy@efficientliving.com.au	SOLAR ACCESS RESOLVE HEMAD AL-HALABIY 9427 8100 rahad.al-halabi@resolve.com.au
STRUCTURAL BONACCI GROUP TIM HOARE 6247 8400 tim@bonaccigroup.com	TRAFFIC TTVA ROSS NETTLE 9416 188 608 ross@ttva.com.au	
HYDRAULIC TBA		

GENERAL NOTES
DO NOT SCALE OFF THIS DRAWING. USE FIGURED DIMENSIONS ONLY. VERIFY ALL DIMENSIONS ON SITE AND RESOLVE ANY DISCREPANCIES BEFORE PROCEEDING. COPYRIGHT OF THIS DRAWING AND THE DESIGNS EXECUTED REMAIN THE PROPERTY OF TONY CARO ARCHITECTURE. BUILDER TO EXAMINE SITE AND VERIFY SITE CONDITIONS PRIOR TO COMMENCING WORK. BUILDER TO CONFIRM BUILDING SETOUT PRIOR TO COMMENCING WORK. ALL ARCHITECTURAL DRAWINGS TO BE READ IN CONJUNCTION WITH OTHER ARCHITECTURAL DETAILS, SPECIFICATIONS AND DOCUMENTS. ALL ARCHITECTURAL DRAWINGS AND DOCUMENTS TO BE READ IN CONJUNCTION WITH OTHER CONSULTANTS' DRAWINGS AND SPECIFICATIONS. BUILDER TO ALLOW FOR DEFLECTION TO ALL SLABS AS REQUIRED TO STRUCTURAL ENGINEERS' SPECIFICATION. CAD DOCUMENTS ARE ISSUED FOR INFORMATION ONLY. CHANGES ARE NOT TO BE MADE TO ANY DOCUMENTATION WITHOUT THE ARCHITECT'S WRITTEN APPROVAL. THE ARCHITECT'S RESPONSIBILITY FOR THE ELECTRONIC TRANSMISSION DIMENSIONS OR ACCURACY OF THESE DRAWINGS. CEILING LEVEL AT NOMINATED DISTANCE FROM FINISHED FLOOR LEVEL FOR ALL EXTERNAL LEVELS REFER TO LANDSCAPE ARCHITECT'S DRAWINGS.



PROJECT	SCALE	PAGE NO.	TITLE	STATUS
RIVERFRONT APARTMENTS 330 CHURCH STREET PARRAMATTA NSW	1:5000	A1	Plans_Podium Levels 1-3	PRELIMINARY
DRAWING NAME	PROJ DATE MAR 2011	DESIGN BY JF	DATE BY TC	
	REV DATE 12/16/14	REV BY JF	DATE BY TC	
	DRAWING NUMBER			A157



NSW GOVERNMENT
Planning

Issued under the Environmental Planning and Assessment Act 1979

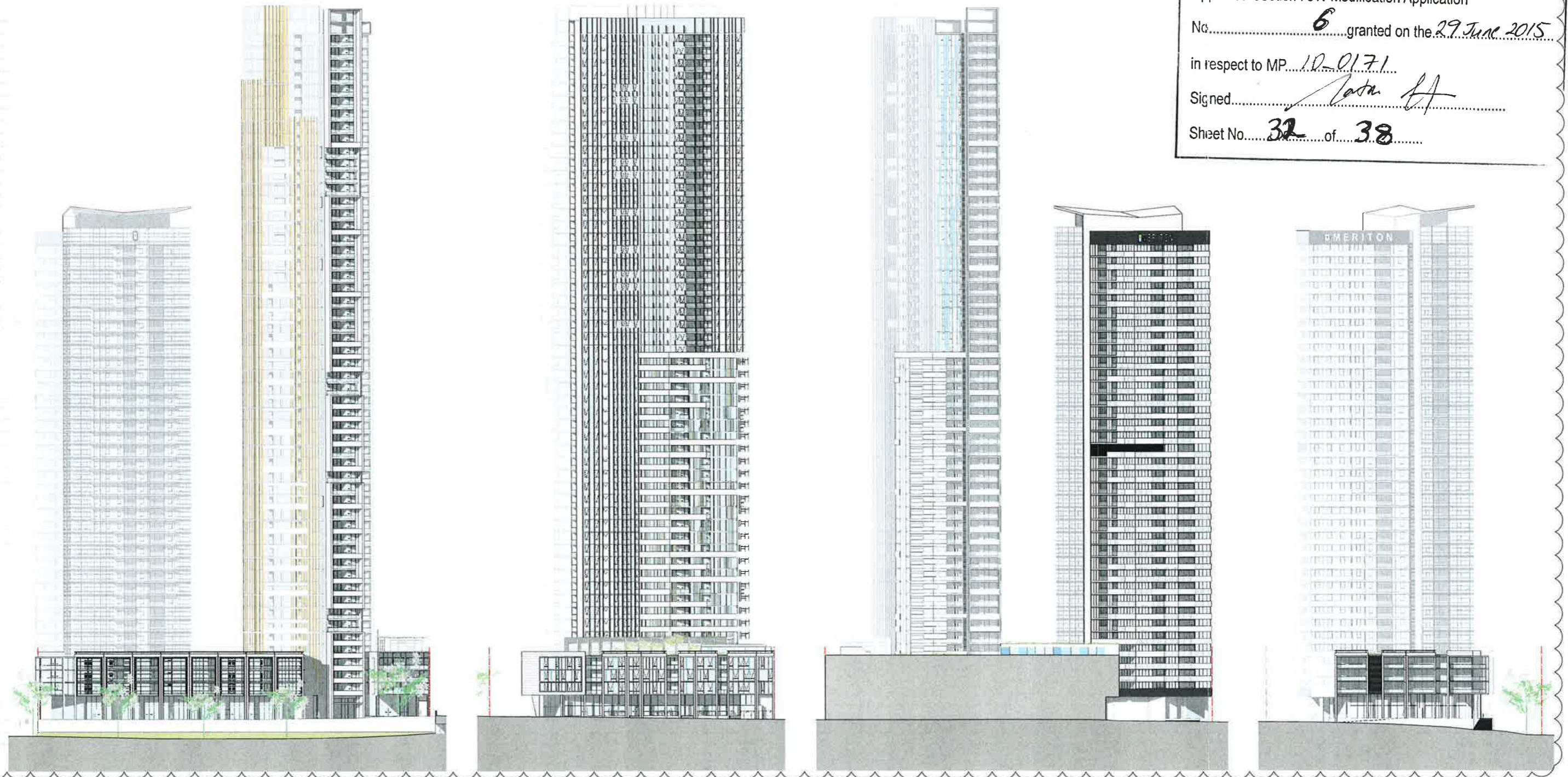
Approved Section 75W Modification Application

No. 6 granted on the 29 June 2015

in respect to MP 10-0171

Signed [Signature]

Sheet No. 32 of 38



01 ELEVATION - NORTH
1:500 @A1

02 ELEVATION - WEST
1:500 @A1

03 ELEVATION - SOUTH
1:500 @A1

04 ELEVATION - EAST
1:500 @A1

GENERAL LEGEND

-ALL ARCHITECTURAL DRAWINGS AND DOCUMENTS TO BE READ IN CONJUNCTION WITH OTHER CONSULTANTS DRAWINGS AND REPORTS FOR ALL EXTERNAL LEVELS REFER LANDSCAPE DRAWINGS
-USE FIGURE DIMENSIONS ONLY - DO NOT SCALE FROM DRAWINGS. IF UNSURE CONFIRM DIMENSIONS WITH ARCHITECT PRIOR TO PROCEEDING
-COPYRIGHT: TONY CARO ARCHITECTURE
-DIGITAL FILES ARE ISSUED FOR INFORMATION ONLY. CHANGES MUST NOT BE MADE TO DOCUMENTS WITHOUT ARCHITECT'S CONSENT

LEGEND - EXTERNAL FINISHES

AVB ALUMINIUM VERTICAL BLADE - VARYING DEPTHS (300-450/600mm)
ALG ALUMINIUM LOUVER SCREENS
ALV ALUMINIUM LOUVER VENT TO 1" DARK BRONZE
BLG BALUSTRADE - GLASS
BLC BALUSTRADE - CONCRETE WITH PAINTED FINISH OR SIMILAR
BLM BALUSTRADE - METAL
G_1 GLAZING TYPE 1 - CLEAR
G_2 GLAZING TYPE 2 - TRANSLUCENT GLASS, COLOUR TBA
G_3 GLAZING TYPE 3 - OPAQUE FILM APPLIED COLOUR TBA

PC_1 PRECAST CONCRETE SPANDREL PANELS WITH PENETRATING PAINT FINISH OR SIMILAR IN NATURAL WHITE
PC_2 SMOOTH PRECAST CONCRETE WITH PAINTED FINISH (NATURAL WHITE) OR SIMILAR
PC_3 SMOOTH PRECAST CONCRETE WITH PAINTED FINISH (GREY PEBBLE) OR SIMILAR
PC_4 PRECAST CONCRETE WITH VERTICAL TEXTURE AND PENETRATING PAINT FINISH OR SIMILAR IN 'GREY PEBBLE'
PPS PERFORATED METAL SCREEN

SSC SAW-CUT SANDSTONE GLAZING
SPF STEEL PORTAL FRAME WITH MICA-GLOSS PAINT FINISH
AHS ALUMINIUM HORIZONTAL BLADES IN DARK BRONZE
SCP STEEL CORNICE, POWDER-COATED IN DULUX ELECTRO DARK BRONZE
VGB VERTICAL GLASS BLADE - COLOUR TBC

DRAWING PREPARED FOR
MERITON
MERITON APARTMENTS
LEVEL 11, MERITON TOWER
528 KENT STREET, SYDNEY
TONY CARO ARCHITECTURE PTY LTD
LEVEL 1, 2 GLEN ST MILBOURN POINT
NSW 2061 SYDNEY AUSTRALIA
T 9545 0000 F 9545 0033
WWW.TONYCAROARCHITECTURE.COM.AU

ISSUE REGISTER

No.	Date	Issue	By
01	12/12/14	Approved by the Applicant	SM
02	18/01/15	Approved by the Applicant	SM
03	19/12/14	Approved by the Applicant	SM
04	20/01/15	Approved by the Applicant	SM
05	19/01/15	Approved by the Applicant	SM
06	22/01/15	Approved by the Applicant	SM
07	23/01/15	Approved by the Applicant	SM
08	24/01/15	Approved by the Applicant	SM
09	25/01/15	Approved by the Applicant	SM
10	26/01/15	Approved by the Applicant	SM
11	27/01/15	Approved by the Applicant	SM
12	28/01/15	Approved by the Applicant	SM
13	29/01/15	Approved by the Applicant	SM
14	30/01/15	Approved by the Applicant	SM
15	31/01/15	Approved by the Applicant	SM
16	01/02/15	Approved by the Applicant	SM
17	02/02/15	Approved by the Applicant	SM
18	03/02/15	Approved by the Applicant	SM
19	04/02/15	Approved by the Applicant	SM
20	05/02/15	Approved by the Applicant	SM
21	06/02/15	Approved by the Applicant	SM
22	07/02/15	Approved by the Applicant	SM
23	08/02/15	Approved by the Applicant	SM
24	09/02/15	Approved by the Applicant	SM
25	10/02/15	Approved by the Applicant	SM
26	11/02/15	Approved by the Applicant	SM
27	12/02/15	Approved by the Applicant	SM
28	13/02/15	Approved by the Applicant	SM
29	14/02/15	Approved by the Applicant	SM
30	15/02/15	Approved by the Applicant	SM
31	16/02/15	Approved by the Applicant	SM
32	17/02/15	Approved by the Applicant	SM

KEY CONSULTANT INFO

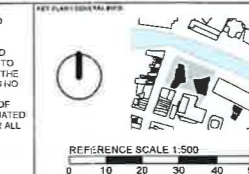
CONSULTANT	NAME	CONTACT INFO
LANDSCAPE	GUY STURT & ASSOC	GUY STURT 6011 3184 Guy@sturtassociates.com.au
STRUCTURAL	SONAGES GROUP	TERESA HANE 6247 8100 teresa@sonages.com.au
HYDRAULIC	TBA	TBA

LEGEND

KEY CONSULTANT INFO	CONSULTANT	NAME	CONTACT INFO
EFFICIENT LEASING	TRACER COOLERS	0849 8932	tracerc@tracercoolers.com.au
SOLAR ACCESS	MEDGES	HEIDI BALCHALEY 9427 8100	heidi@medges.com.au
TRAFFIC	MOSES METZKE	9446 9986	Tom@moses.com.au

DO NOT SCALE OFF THIS DRAWING. USE FIGURED DIMENSIONS ONLY. VERIFY ALL DIMENSIONS ON SITE AND RESOLVE ANY DISCREPANCIES BEFORE PROCEEDING. COPYRIGHT OF THIS DRAWING AND THE DESIGNER EXCLUDED REMAINS THE PROPERTY OF TONY CARO ARCHITECTURE. BUILDER TO EXAMINE SITE AND VERIFY SITE CONDITIONS PRIOR TO COMMENCING WORK. BUILDER TO CONFIRM BUILDING SETOUT PRIOR TO COMMENCING WORK. ALL ARCHITECTURAL DRAWINGS TO BE READ IN CONJUNCTION WITH OTHER ARCHITECTURAL DETAILS, SCHEDULES AND SPECIFICATIONS. ALL ARCHITECTURAL DRAWINGS AND DOCUMENTS TO BE READ IN CONJUNCTION WITH OTHER CONSULTANTS.

DRAWINGS AND SPECIFICATIONS BUILDER TO ALLOW FOR DEFLECTION TO ALL GLASS AS REQUIRED TO STRUCTURAL ENGINEERS. SPECIFICATION CAD DOCUMENTS ARE ISSUED FOR INFORMATION ONLY. CHANGES ARE NOT TO BE MADE TO ANY DOCUMENTATION WITHOUT THE ARCHITECT'S WRITTEN APPROVAL. TCA TAKES NO RESPONSIBILITY FOR THE ELECTROSTATIC TRANSMISSION DIMENSIONS OR ACCURACY OF THESE DRAWINGS. CEILING LEVEL AT INDICATED DISTANCE FROM FINISHED FLOOR LEVEL. FOR ALL EXTERNAL LEVELS REFER TO LANDSCAPE ARCHITECT'S DRAWINGS.



RIVERFRONT APARTMENTS
330 CHURCH STREET
PARRAMATTA NSW
ELEVATIONS - SITE
A300

SCALE	DATE	BY	STATUS
1:500	A1	A	
	JF	JF	
	D	14	



NSW GOVERNMENT
Planning

Issued under the Environmental Planning and Assessment Act 1979

Approved Section 75W Modification Application

No. 6 granted on the 29 June 2015

in respect to MP 10-0171

Signed [Signature]

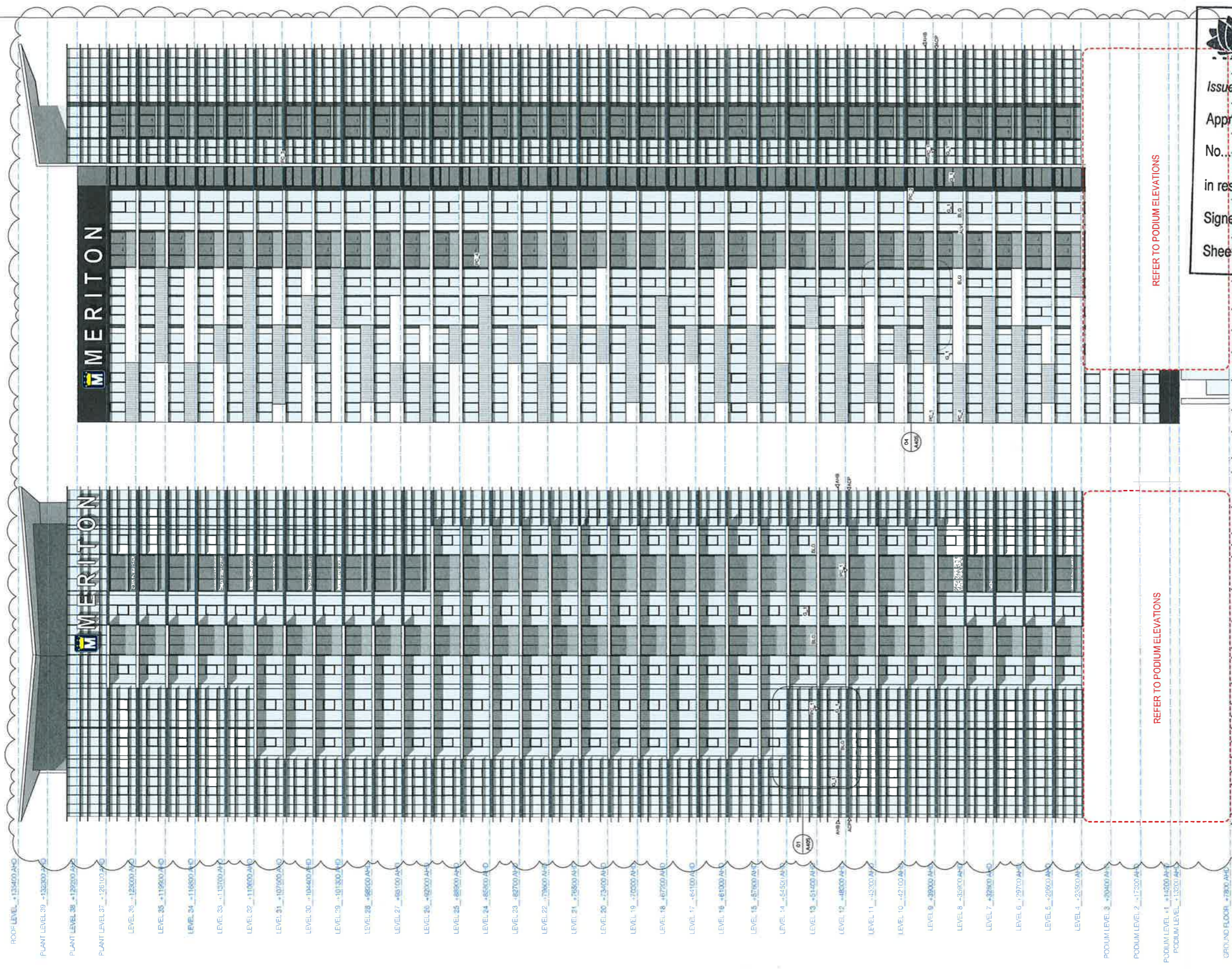
Sheet No. 33 of 38

REFER TO PODIUM ELEVATIONS

REFER TO PODIUM ELEVATIONS

(02) ELEVATION - EAST

(01) ELEVATION - NORTH



- LEGEND - EXTERNAL FINISHES**
- ALB ALUMINUM VERTICAL BLADE - VARYING DEPTHS (200 - 450, 600mm)
 - ALS ALUMINUM SLIDING SCREENS - VARYING DEPTHS (200 - 450, 600mm)
 - ALB ALUMINUM COVER PLATE IN DARK BRONZE
 - ALB ALUMINUM COVER PLATE IN SILVER
 - ALB ALUMINUM COVER PLATE IN WHITE
 - ALB ALUMINUM COVER PLATE IN BLACK
 - ALB ALUMINUM COVER PLATE IN BRASS
 - ALB ALUMINUM COVER PLATE IN COPPER
 - ALB ALUMINUM COVER PLATE IN GOLD
 - ALB ALUMINUM COVER PLATE IN PLATINUM
 - ALB ALUMINUM COVER PLATE IN PALLADIUM
 - ALB ALUMINUM COVER PLATE IN RUTHENIUM
 - ALB ALUMINUM COVER PLATE IN IRIUM
 - ALB ALUMINUM COVER PLATE IN OSMIUM
 - ALB ALUMINUM COVER PLATE IN NIOBIUM
 - ALB ALUMINUM COVER PLATE IN TANTALUM
 - ALB ALUMINUM COVER PLATE IN VANADIUM
 - ALB ALUMINUM COVER PLATE IN ZIRCONIUM
 - ALB ALUMINUM COVER PLATE IN HAFNIUM
 - ALB ALUMINUM COVER PLATE IN TUNGSTEN
 - ALB ALUMINUM COVER PLATE IN RHEINIUM
 - ALB ALUMINUM COVER PLATE IN MANGANESE
 - ALB ALUMINUM COVER PLATE IN CHROMIUM
 - ALB ALUMINUM COVER PLATE IN COBALT
 - ALB ALUMINUM COVER PLATE IN NICKEL
 - ALB ALUMINUM COVER PLATE IN CUPRUM
 - ALB ALUMINUM COVER PLATE IN ZINC
 - ALB ALUMINUM COVER PLATE IN CADMIUM
 - ALB ALUMINUM COVER PLATE IN BARIUM
 - ALB ALUMINUM COVER PLATE IN STRONTIUM
 - ALB ALUMINUM COVER PLATE IN CALCIUM
 - ALB ALUMINUM COVER PLATE IN SODIUM
 - ALB ALUMINUM COVER PLATE IN POTASSIUM
 - ALB ALUMINUM COVER PLATE IN LITHIUM
 - ALB ALUMINUM COVER PLATE IN BERYLLIUM
 - ALB ALUMINUM COVER PLATE IN MAGNESIUM
 - ALB ALUMINUM COVER PLATE IN ALUMINUM
 - ALB ALUMINUM COVER PLATE IN SILICON
 - ALB ALUMINUM COVER PLATE IN CARBON
 - ALB ALUMINUM COVER PLATE IN NITROGEN
 - ALB ALUMINUM COVER PLATE IN OXYGEN
 - ALB ALUMINUM COVER PLATE IN FLUORINE
 - ALB ALUMINUM COVER PLATE IN CHLORINE
 - ALB ALUMINUM COVER PLATE IN BROMINE
 - ALB ALUMINUM COVER PLATE IN IODINE
 - ALB ALUMINUM COVER PLATE IN THALLIUM
 - ALB ALUMINUM COVER PLATE IN LEAD
 - ALB ALUMINUM COVER PLATE IN BISMUTH
 - ALB ALUMINUM COVER PLATE IN POLONIUM
 - ALB ALUMINUM COVER PLATE IN ASTATINE
 - ALB ALUMINUM COVER PLATE IN RADON
 - ALB ALUMINUM COVER PLATE IN FRANCIUM
 - ALB ALUMINUM COVER PLATE IN RADIUM
 - ALB ALUMINUM COVER PLATE IN ACTINIUM
 - ALB ALUMINUM COVER PLATE IN THORIUM
 - ALB ALUMINUM COVER PLATE IN URANIUM
 - ALB ALUMINUM COVER PLATE IN NEPTUNIUM
 - ALB ALUMINUM COVER PLATE IN PLUTONIUM
 - ALB ALUMINUM COVER PLATE IN AMERICIUM
 - ALB ALUMINUM COVER PLATE IN CURIUM
 - ALB ALUMINUM COVER PLATE IN BERKELIUM
 - ALB ALUMINUM COVER PLATE IN CALIFORNIUM
 - ALB ALUMINUM COVER PLATE IN EINSTEINIUM
 - ALB ALUMINUM COVER PLATE IN FERMIUM
 - ALB ALUMINUM COVER PLATE IN MENDELIUM
 - ALB ALUMINUM COVER PLATE IN NUBIUM
 - ALB ALUMINUM COVER PLATE IN TENNESSIUM
 - ALB ALUMINUM COVER PLATE IN OGANESSIUM

DRAWING PREPARED FOR

MERITON

MERITON APARTMENTS
53 KENT STREET, SYDNEY

BY

TONY CARO ARCHITECTURE PTY LTD
LEVEL 11, 2 GLEN ST MILBORNS POINT
NSW 2081 STONEY AUSTRALIA
T 99649100 F 99649133
WWW.TONYCAROARCHITECTURE.COM.AU

ISSUE REGISTER

NO	DATE	REVISION
1	10/11/15	Issue for Application
2	10/11/15	Issue for Application
3	10/11/15	Issue for Application
4	10/11/15	Issue for Application
5	10/11/15	Issue for Application
6	10/11/15	Issue for Application
7	10/11/15	Issue for Application
8	10/11/15	Issue for Application
9	10/11/15	Issue for Application
10	10/11/15	Issue for Application

REVISION REGISTER

NO	DATE	REVISION
1	10/11/15	Issue for Application
2	10/11/15	Issue for Application
3	10/11/15	Issue for Application
4	10/11/15	Issue for Application
5	10/11/15	Issue for Application
6	10/11/15	Issue for Application
7	10/11/15	Issue for Application
8	10/11/15	Issue for Application
9	10/11/15	Issue for Application
10	10/11/15	Issue for Application

LEGEND

NO	DATE	REVISION
1	10/11/15	Issue for Application
2	10/11/15	Issue for Application
3	10/11/15	Issue for Application
4	10/11/15	Issue for Application
5	10/11/15	Issue for Application
6	10/11/15	Issue for Application
7	10/11/15	Issue for Application
8	10/11/15	Issue for Application
9	10/11/15	Issue for Application
10	10/11/15	Issue for Application

KEY CONSULTANT INFO

DISCIPLINE	CONSULTANT	CONTACT
LANDSCAPE	GUY STURT & ASSOC	6211 2144 guy@sturtassociates.com.au
STRUCTURAL	BONACCI GROUP	8337 4408 bonacci@bonaccigroup.com
HYDRAULIC	TBA	
	TBA	
	TBA	

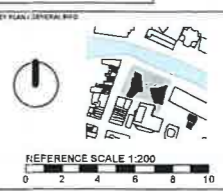
KEY CONSULTANT INFO

DISCIPLINE	CONSULTANT	CONTACT
BASA	EFFICIENT LEVIG	9349 8882 levig@efficientlevig.com.au
NEIGHBOURHOOD ACCESS	ROKAR ACCESS	9434 0000 rokar@rokaraccess.com.au
TRAFFIC	TBA	
	TBA	
	TBA	

GENERAL NOTES

DO NOT SCALE OFF THIS DRAWING. USE FIGURED DIMENSIONS ONLY. VERIFY ALL DIMENSIONS ON SITE AND RESOLVE ANY DISCREPANCIES BEFORE PROCEEDING. COPYRIGHT OF THIS DRAWING AND THE DESIGNS EXECUTED REMAIN THE PROPERTY OF TONY CARO ARCHITECTURE. BUILDER TO EXAMINE SITE AND VERIFY SITE CONDITIONS PRIOR TO COMMENCING WORK. BUILDER TO CONFIRM BUILDING SETOUT PRIOR TO COMMENCING WORK. ALL ARCHITECTURAL DRAWINGS TO BE READ IN CONJUNCTION WITH OTHER ARCHITECTURAL DETAILS, SCHEDULES AND SPECIFICATIONS. ALL ARCHITECTURAL DRAWINGS AND DOCUMENTS TO BE READ IN CONJUNCTION WITH OTHER CONSULTANTS.

DRAWINGS AND SPECIFICATIONS, BUILDER TO ALLOW FOR DEFLECTION TO ALL SLABS AS REQUIRED TO STRUCTURAL ENGINEERS SPECIFICATION. CAD DOCUMENTS ARE ISSUED FOR INFORMATION ONLY. CHANGES ARE NOT TO BE MADE TO ANY DOCUMENTATION WITHOUT THE ARCHITECT'S WRITTEN APPROVAL. TCA TAKES NO RESPONSIBILITY FOR THE ELECTRONIC TRANSMISSION DIMENSIONS OR ACCURACY OF THESE DRAWINGS. CEILING LEVEL AT NOMINATED DISTANCE FROM FINISHED FLOOR LEVEL FOR ALL EXTERNAL LEVELS REFER TO LANDSCAPE ARCHITECT'S DRAWINGS.



RIVERFRONT APARTMENTS

330 CHURCH STREET
PARRAMATTA NSW

**ELEVATIONS - EAST
TOWER**

SCALE 1:200

PAGE NO A1

TOTAL PAGES A

DATE 04/11

REVISED BY RD

ISSUED BY JF

DATE 12/2/15

REVISED BY B

ISSUED BY B

PROJECT NUMBER A352

