
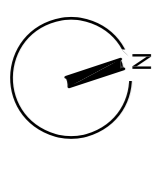
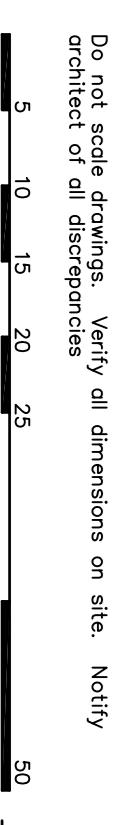
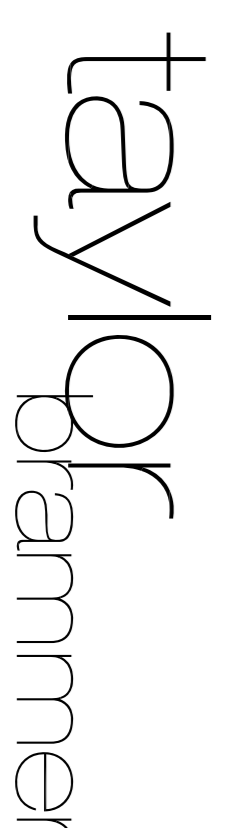


# GRAYTHWAITE, SYDNEY CHURCH OF ENGLAND GRAMMAR SCHOOL 20 EDWARD STREET, NORTH SYDNEY

## LANDSCAPE ARCHITECTURE DRAWING LIST SECTION 75W MODIFICATION

DWG NO.	DRAWING TITLE	SCALE
LT.000 (F)	TITLE SHEET	N.T.S.
CONCEPT PLAN APPLICATIONS		
LT.001 (G)	LANDSCAPE MASTER PLAN	1:500
LT.002 (G)	LANDSCAPE PLAN -NORTH	1:200
STAGE 1 PROJECT APPLICATION		
LT.003 (I)	TREE REMOVAL AND RETENTION PLAN	1:500
LT.004 (E)	EXISTING TREE SCHEDULE- HERITAGE SIGNIFICANCE & ACTION	NTS
LT.005 (E)	LANDSCAPE HARDWORKS	1:500
LT.006 (E)	LANDSCAPE SOFTWORKS	1:500
LT.007 (E)	LANDSCAPE TREE PLAN	1:500
LT.008 (E)	LANDSCAPE LIGHTING PLAN	1:500
LT.009 (A)	LANDSCAPE DETAILS	AS NOTED
EARLY WORKS		
LT.010 (B)	EARLY WORKS PLANTING	1:200
LT.011 (B)	EARLY WORKS LANDSCAPE DETAILS	AS NOTED

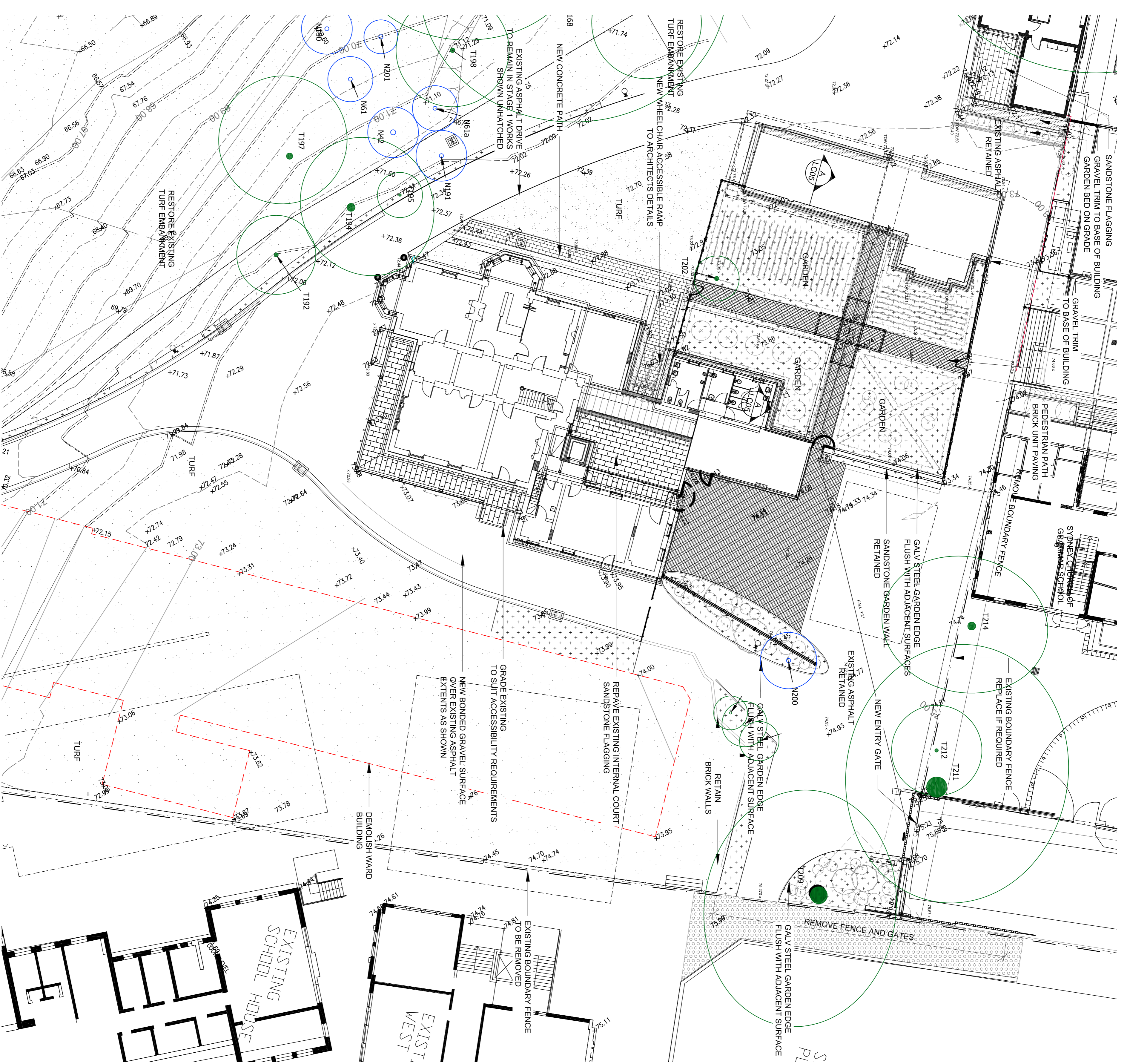
<p><b>CLIENT</b> Sydney Church of England Grammar School (Shore)</p> <p>Blue Street, North Sydney NSW 2060 T +61 2 9923 2277 F +61 2 9922 2689</p> 	<p><b>ARCHITECTS</b> P D Moyoh Pty Ltd Architects 9956 6424998 0488 F +61 2 9281 4337</p> <p><b>ARCHITECTS</b> Tonner Architects T + 61 2 9381 4399 F +61 2 9281 4337</p> <p><b>ARCHITECTS</b> Taylor Brimmer T + 61 2 9387 8855 F +61 2 9387 8155</p>	<p><b>PROJECT MANAGER</b> Fitzwiler Group T + 61 2 8926 6701 F +61 2 8926 6796</p>	<table border="1"> <thead> <tr> <th>Rev</th> <th>Date</th> <th>Description</th> <th>Checked</th> <th>Auth.</th> </tr> </thead> <tbody> <tr> <td>A</td> <td>11.07.11</td> <td>TITLE PAGE</td> <td>DMT</td> <td>DMT</td> </tr> <tr> <td>B</td> <td>22.09.11</td> <td>REVISION UPDATES</td> <td>DMT</td> <td>DMT</td> </tr> <tr> <td>C</td> <td>03.10.11</td> <td>DWG NO. UPDATES</td> <td>DMT</td> <td>DMT</td> </tr> <tr> <td>D</td> <td>17.10.11</td> <td>INCLUDED</td> <td>DMT</td> <td>DMT</td> </tr> <tr> <td>E</td> <td>21.02.13</td> <td>STEW MODIFICATION</td> <td>DMT</td> <td>DMT</td> </tr> <tr> <td>F</td> <td>11.03.13</td> <td>75W MODIFICATION</td> <td>DMT</td> <td>DMT</td> </tr> </tbody> </table>	Rev	Date	Description	Checked	Auth.	A	11.07.11	TITLE PAGE	DMT	DMT	B	22.09.11	REVISION UPDATES	DMT	DMT	C	03.10.11	DWG NO. UPDATES	DMT	DMT	D	17.10.11	INCLUDED	DMT	DMT	E	21.02.13	STEW MODIFICATION	DMT	DMT	F	11.03.13	75W MODIFICATION	DMT	DMT	<table border="0"> <tr> <td>Proj. No.</td> <td>10-027s</td> </tr> <tr> <td>Proj. AC Date</td> <td>11.07.11</td> </tr> <tr> <td>Drawn Scale</td> <td>NTS</td> </tr> </table>	Proj. No.	10-027s	Proj. AC Date	11.07.11	Drawn Scale	NTS	<p>Do not scale drawings. Verify all dimensions on site. Notify architect of all discrepancies</p>  	<p><b>Project</b> GRAYTHWAITE CONCEPT PLAN APPLICATION</p> <p><b>Drawing Title</b> TITLE PAGE</p> <p><b>Drawing No.</b> LT.000</p> <p><b>Revision</b> F</p>	 <p><b>Taylor Brimmer</b> Landscape Architects 218 Oxford Street, Woollahra, NSW, Australia, 2025 Tel: (02) 9387 8855 Fax: (02) 9387 8155 e: sydney@taylorbrimmer.com.au</p>
Rev	Date	Description	Checked	Auth.																																												
A	11.07.11	TITLE PAGE	DMT	DMT																																												
B	22.09.11	REVISION UPDATES	DMT	DMT																																												
C	03.10.11	DWG NO. UPDATES	DMT	DMT																																												
D	17.10.11	INCLUDED	DMT	DMT																																												
E	21.02.13	STEW MODIFICATION	DMT	DMT																																												
F	11.03.13	75W MODIFICATION	DMT	DMT																																												
Proj. No.	10-027s																																															
Proj. AC Date	11.07.11																																															
Drawn Scale	NTS																																															



EXISTING TREE SCHEDULE - HERITAGE SIGNIFICANCE AND ACTION

TREE NO.	BOTANICAL NAME	COMMON NAME	HEIGHT (m)	HERITAGE SIGNIFICANCE	ACTION	COMMENT
1	<i>Sapium sebiferum</i>	Chinese Tallow Tree	6	Little	Retain	
2	<i>Sapium sebiferum</i>	Chinese Tallow Tree	4.5	Little	Remove	
3	<i>Sapium sebiferum</i>	Chinese Tallow Tree	4.5	Little	Retain	
4	<i>Lophostemon confertus</i>	Brush Box	9	Little	Retain	Inconsistent
5	<i>Sapium sebiferum</i>	Chinese Tallow Tree	5.5	Little	Retain	
6	<i>Ficus benjamina</i>	Weeping Fig	7.5	Little	Retain	
7	<i>Eucalyptus nicholii</i>	New England Peppermint	9	Little	Retain	Inconsistent
7a	<i>Eucalyptus boidyioides</i>	Bangalay Tree	7	Little	Retain	
8	<i>Cinnamomum camphora</i>	Camphor Tree	12	Moderate	Retain	
9	<i>Lophostemon confertus</i>	Brush Box	8	Moderate	Retain	
10	<i>Robinia pseudacacia</i>	Black locust	7	Little	Remove	Weed species
11	<i>Robinia pseudacacia</i>	Black locust	8	Little	Remove	Weed species
12	<i>Robinia pseudacacia</i>	Black locust	7	Little	Remove	Weed species
13	<i>Robinia pseudacacia</i>	Black locust	7	Little	Remove	Weed species
14	<i>Robinia pseudacacia</i>	Black locust	8.5	Little	Remove	Weed species
15	<i>Robinia pseudacacia</i>	Black locust	8	Little	Remove	Weed species
16	<i>Robinia pseudacacia</i>	Black locust	7	Little	Remove	Weed species
17	<i>Robinia pseudacacia</i>	Black locust	9	Little	Remove	Weed species
18	<i>Cinnamomum camphora</i>	Camphor Tree	12	Moderate	Remove	Weed species
19	<i>Robinia pseudacacia</i>	Black locust	9	Little	Remove	Weed species
20	<i>Salix babingtonii</i>	Weeping Willow	13	Little	Remove	Weed species
21	<i>Robinia pseudacacia</i>	Black locust	10	Little	Remove	Weed species
22	<i>Robinia pseudacacia</i>	Black locust	7	Little	Remove	Weed species
23	<i>Robinia pseudacacia</i>	Black locust	7	Little	Remove	Weed species
23a	<i>Populus simonii</i>	Chinese Poplar	11	Moderate	Retain	
24	<i>Lophostemon confertus</i>	Brush Box	12	Moderate	Retain	
25	<i>Lophostemon confertus</i>	Brush Box	10	Moderate	Retain	
26	<i>Robinia pseudacacia</i>	Black locust	6	Moderate	Remove	Weed species
27	<i>Robinia pseudacacia</i>	Black locust	6	Moderate	Remove	Weed species
28	<i>Robinia pseudacacia</i>	Black locust	7	Little	Remove	Weed species
29	<i>Robinia pseudacacia</i>	Black locust	9	Little	Remove	Weed species
30	<i>Cinnamomum camphora</i>	Camphor Tree	11	Moderate	Remove	Weed species
31	<i>Robinia pseudacacia</i>	Black locust	10	Little	Remove	Weed species
32	<i>Robinia pseudacacia</i>	Black locust	9	Little	Remove	Weed species
33	<i>Robinia pseudacacia</i>	Black locust	11	Little	Remove	Weed species
34	<i>Cinnamomum camphora</i>	Camphor Tree	13	Moderate	Remove	Weed species
35	<i>Populus nigra 'Italica'</i>	Lombardy Poplar	12	Moderate	Remove	Inconsistent
36	<i>Populus nigra 'Italica'</i>	Lombardy Poplar	14	Little	Remove	Inconsistent
37	<i>Cinnamomum camphora</i>	Camphor Tree	15	Moderate	Remove	
37a	<i>Cassia glabra</i>	Swamp Oak	14	Little	Retain	
37b	<i>Ficus obliqua</i>	Small Leaved Fig	9	Little	Retain	
38	<i>Cinnamomum camphora</i>	Camphor Laurel	16	High	Retain	
39	<i>Lophostemon confertus</i>	Brush Box	20	High	Retain	
40	<i>Lophostemon confertus</i>	Brush Box	14	High	Retain	
41	<i>Stereocarpus sinuatus</i>	Firewheel Tree	14	High	Retain	
42	<i>Washingtonia robusta</i>	Washington Palm	7	Little	Retain	
43	<i>Cinnamomum camphora</i>	Camphor Laurel	16	Little	Retain	
44	<i>Cyclocarya obtusifolia</i>	Peppercorn Tree	18	Moderate	Retain	
45	<i>Cinnamomum camphora</i>	Camphor Laurel	15	Little	Retain	
46	<i>Lophostemon confertus</i>	Brush Box	8	Little	Retain	
46a	<i>Albizia tonkinensis</i>	Rambutan	8	Little	Retain	Weed species
47	<i>Ligustrum lucidum</i>	Large leaved Privet	7	Intrusive	Remove	Weed species
48	<i>Underscribed species</i>	Underscribed species	14	Little	Remove	Inconsistent
49	<i>Anacardium occidentale</i>	Cocks Pine	30	Little	Retain	
50	<i>Washingtonia robusta</i>	Washington Palm	11	Little	Remove	Within Footprint of Works
51	<i>Washingtonia robusta</i>	Washington Palm	10	Little	Remove	
52	<i>Schefflera actinophylla</i>	Umbrella tree	7	Little	Remove	Inconsistent
53	<i>Cyrtosperma x leydianii</i>	Leyland Cypress	10	Little	Remove	Within Footprint of Works
54	<i>Cyrtosperma x leydianii</i>	Leyland Cypress	9	Little	Remove	Within Footprint of Works
55	<i>Cyrtosperma x leydianii</i>	Leyland Cypress	8	Little	Remove	Within Footprint of Works
56	<i>Cyrtosperma x leydianii</i>	Leyland Cypress	10	Little	Remove	Within Footprint of Works
57	<i>Cyrtosperma x leydianii</i>	Leyland Cypress	9	Little	Remove	Within Footprint of Works
58	<i>Cyrtosperma x leydianii</i>	Leyland Cypress	9	Little	Remove	Within Footprint of Works
59	<i>Cinnamomum camphora</i>	Camphor Laurel	6	Little	Remove	Within Footprint of Works
60	<i>Ficus obliqua</i>	Small Leaved Fig	12	High	Remove	
61	<i>Washingtonia robusta</i>	Washington Palm	15	Moderate	Remove	
62	<i>Washingtonia robusta</i>	Washington Palm	14	Moderate	Transplant	
63	<i>Albizia tonkinensis</i>	Rambutan	6	Little	Remove	Inconsistent
64	<i>Omalanthus populifolius</i>	Bleeding Heart	6	Little	Remove	Weed species
65	<i>Populus alba</i>	Silver Poplar	5	Little	Remove	Weed species
66	<i>Ptilotopus undulatum</i>	Native Daphne	6	Little	Remove	Weed species
67	<i>Populus alba</i>	Silver Poplar	10	Little	Remove	Weed species
68	<i>Ficus obliqua</i>	Small Leaved Fig	14	High	Retain	
68a, 68b, 70a	<i>Acacia sp. Paramantensis</i>	Sydney Green Wattle	12, 13, 14, 11	Little	Remove	Colouriser
71	<i>Ficus macrophylla</i>	Moreton Bay Fig	15	High	Retain	
71a	<i>Glochidion fedianifolium</i>	Cheese Tree	9	Little	Retain	
72	<i>Ptilotopus undulatum</i>	Native daphne	13	Little	Retain	
73	<i>Ficus macrophylla</i>	Moreton Bay Fig	15	High	Retain	
74	<i>Ficus obliqua</i>	Small Leaved Fig	15	High	Retain	
75	<i>Ptilotopus undulatum</i>	Native daphne	7	Little	Retain	
75a	<i>Ptilotopus undulatum</i>	Native daphne	9	Little	Retain	
76	<i>Ptilotopus undulatum</i>	Native daphne	9	Little	Retain	
77	<i>Ptilotopus undulatum</i>	Native daphne	8	Little	Retain	
78	<i>Ptilotopus undulatum</i>	Native daphne	7	Little	Retain	
79	<i>Glochidion fedianifolium</i>	Cheese Tree	8	Little	Retain	
80	<i>Ptilotopus undulatum</i>	Native daphne	11	Little	Retain	
83	<i>Ptilotopus undulatum</i>	Native daphne	10	Little	Retain	
84	<i>Maleura stypheloides</i>	Prickly Paperbark	7	Little	Retain	
85	<i>Maleura stypheloides</i>	Prickly Paperbark	7	Little	Retain	
86	<i>Maleura stypheloides</i>	Prickly Paperbark	7	Little	Retain	
87	<i>Maleura stypheloides</i>	Prickly Paperbark	7	Little	Retain	
88	<i>Celtis striensis</i>	Chinese Nettle Tree	7	Little	Remove	Weed species
89	<i>Ficus macrophylla</i>	Moreton Bay Fig	18	High	Retain	
90	<i>Ficus macrophylla</i>	Moreton Bay Fig	18	High	Retain	
90a	<i>Ficus macrophylla</i>	Moreton Bay Fig	18	High	Retain	
91	<i>Erythrina x Sikesii</i>	Indian Coral Tree	12	Little	Remove	Weed species
92	<i>Erythrina x Sikesii</i>	Indian Coral Tree	12	Little	Remove	Weed species
92a	<i>Erythrina x Sikesii</i>	Indian Coral Tree	12	Little	Remove	Weed species
93	<i>Erythrina x Sikesii</i>	Indian Coral Tree	12	Little	Remove	Weed species
93a	<i>Erythrina x Sikesii</i>	Indian Coral Tree	12	Little	Remove	Weed species
94	<i>Erythrina x Sikesii</i>	Indian Coral Tree	11	Little	Remove	Weed species
95	<i>Erythrina x Sikesii</i>	Indian Coral Tree	14	Little	Remove	Weed species
96	<i>Erythrina x Sikesii</i>	Indian Coral Tree	11	Little	Remove	Weed species
97	<i>Erythrina x Sikesii</i>	Indian Coral Tree	9	Little	Remove	Weed species
98	<i>Ficus macrophylla</i>	Moreton Bay Fig	8	High	Retain	
99	<i>Ficus macrophylla</i>	Moreton Bay Fig	17	High	Retain	
100	<i>Ficus macrophylla</i>	Moreton Bay Fig	15	High	Retain	
101	<i>Populus alba</i>	Silver Poplar	12	Little	Remove	Weed species

TREE NO.	BOTANICAL NAME	COMMON NAME	HEIGHT (m)	HERITAGE SIGNIFICANCE	ACTION	COMMENT
102	<i>Populus alba</i>	Silver Poplar	12	Little	Remove	Weed species
103	<i>Populus rubra</i>	Silky Oak	17	Little	Remove	Within Footprint of Works
104	<i>Aucuba columnaris</i>	Hoop Pine	8	Little	Retain	
105	<i>Ficus sp.</i>	Small Leaved Fig	10	Little	Retain	
106	<i>Baccharis discolor</i>	Queensland Labeck	12	Little	Retain	
107	<i>Ficus macrophylla</i>	Moreton Bay Fig	14	High	Retain	
108	<i>Ficus macrophylla</i>	Moreton Bay Fig	16	High	Retain	
109	<i>Ficus macrophylla</i>	Moreton Bay Fig	12	Little	Retain	
110	<i>Jacaranda mimosifolia</i>	Jacaranda	9	Little	Retain	
111	<i>Populus alba</i>	Silver Poplar	10	Little	Remove	Within Footprint of Works
112	<i>Ficus macrophylla</i>	Moreton Bay Fig	17	High	Retain	
114	<i>Ficus rubiginosa f. glabrescens</i>	Port Jackson Fig	10	Little	Retain	
115	<i>Ficus macrophylla</i>	Moreton Bay Fig	13	High	Retain	
116	<i>Ficus macrophylla</i>	Moreton Bay Fig	15	High	Retain	
117	<i>Ficus macrophylla</i>	Moreton Bay Fig	15	High	Retain	
118	<i>Eucalyptus saligna</i>	Sydney Blue Gum	20	Little	Retain	
119	<i>Ptilotopus undulatum</i>	Native daphne	11	Little	Retain	
120	<i>Ptilotopus undulatum</i>	Native daphne	12	Little	Retain	
121	<i>Ficus rubiginosa f. glabrescens</i>	Port Jackson Fig	12	High	Retain	
122	<i>Olea africana var. Africana</i>	African Olive	8	Little	Remove	Weed species
123	<i>Ptilotopus undulatum</i>	Native daphne	7	Little	Remove	Weed species
124	<i>Olea africana var. Africana</i>	African Olive	9	Little	Remove	Weed species
125	<i>Ficus sp.</i>	Small Leaved Fig	13	Little	Retain	
126	<i>Ptilotopus undulatum</i>	Native daphne	9	Little	Retain	
127	<i>Ptilotopus undulatum</i>	Native daphne	14	Little	Retain	
128	<i>Olea africana var. Africana</i>	African Olive	12	Little	Remove	Weed species
130	<i>Olea africana var. Africana</i>	Native daphne	9	Little	Remove	Weed species
131	<i>Ptilotopus undulatum</i>	Native daphne	11	Little	Remove	Weed species
132	<i>Olea africana var. Africana</i>	African Olive	9	Little	Remove	Weed species
133	<i>Glochidion fedianifolium</i>	Cheese Tree	11	Little	Remove	Weed species
134	<i>Ptilotopus undulatum</i>	Native daphne	12	Little	Remove	Weed species
135	<i>Ptilotopus undulatum</i>	Native daphne	10	Little	Remove	Weed species
136	<i>Ficus sp.</i>	Small Leaved Fig	13	Little	Retain	
137	<i>Erythrina x Sikesii</i>	Indian Coral Tree	15	Little	Remove	Weed species
137a	<i>Ptilotopus undulatum</i>	Native daphne	9	Little	Remove	Weed species
137b	<i>Erythrina x Sikesii</i>	Indian Coral Tree	15	Little	Remove	Weed species
137c	<i>Erythrina x Sikesii</i>	Indian Coral Tree	15	Little	Remove	Weed species
138	<i>Erythrina x Sikesii</i>	Indian Coral Tree	15	Little	Remove	Weed species
139	<i>Ptilotopus undulatum</i>	Native daphne	10	Little	Remove	Within Footprint of Works
140	<i>Ptilotopus undulatum</i>	Native daphne	7	Little	Remove	Inconsistent
141	<i>Ficus rubiginosa f. glabrescens</i>	Port Jackson Fig	14	High	Retain	
141a	<i>Ptilotopus undulatum</i>	Native daphne	7	Little	Remove	Weed species
142	<i>Ptilotopus undulatum</i>	Native daphne	12	Little	Remove	Weed species
142a	<i>Ptilotopus undulatum</i>	Native daphne	10	Little	Remove	Weed species
143	<i>Olea africana var. Africana</i>	African Olive	12	Little	Remove	Weed species
144	<i>Ficus sp.</i>	Small Leaved Fig	12	Little	Remove	Weed species
145	<i>Ptilotopus undulatum</i>	Native daphne	8	Little	Remove	Weed species
146	<i>Ptilotopus undulatum</i>	Native daphne	8	Little	Remove	Weed species
147	<i>Ptilotopus undulatum</i>	Native daphne	10	Little	Remove	Weed species
148	<i>Ficus rubiginosa f. Rubiginosa</i>	Port Jackson Fig	12	Little	Remove	Weed species
149	<i>Olea africana var. Africana</i>	African Olive	8	Little	Remove	Weed species
150	<i>Olea africana var. Africana</i>	African Olive	12	Little	Remove	Weed species
151	<i>Ficus rubiginosa f. glabrescens</i>	Port Jackson Fig	13	High	Remove	Weed species
152	<i>Ligustrum lucidum</i>	Large leaved Privet	15	Intrusive	Remove	Weed species
153	<i>Olea africana var. Africana</i>	Wornton Bay Fig	8	Little	Remove	Weed species
153a	<i>Olea africana var. Africana</i>	African Olive	8	Little	Remove	Weed species
154	<i>Populus alba</i>	Silver Poplar	13	Moderate	Remove	Weed species
155	<i>Lophostemon confertus</i>	Brush Box	11	Little	Remove	
156	<i>Ficus sp.</i>	Small Leaved Fig	11	Little	Remove	
157	<i>Eucalyptus bilidaris</i>	Blackbutt	9	Little	Remove	
158	<i>Cinnamomum camphora</i>	Camphor Laurel	6	Little	Remove	
159	<i>Eucalyptus bilidaris</i>	Blackbutt	6	Little	Remove	
160	<i>Ficus rubiginosa f. glabrescens</i>	Port Jackson Fig	18	High	Retain	
161	<i>Ficus rubiginosa f. glabrescens</i>	Port Jackson Fig	19	High	Retain	
162	<i>Ficus rubiginosa f. glabrescens</i>	Port Jackson Fig	18	High	Retain	
163	<i>Ficus macrophylla</i>	Moreton Bay Fig	14	High	Retain	
164	<i>Ficus sp.</i>	Small Leaved Fig	16	High	Remove	
165	<i>Dephacalanus gahneus</i>	Garhi Bamboo	15	High	Remove	Unstable
166	<i>Lophostemon confertus</i>	Brush Box	11	Moderate	Remove	
167	<i>Ficus rubiginosa f. glabrescens</i>	Port Jackson Fig	12	High	Retain	
168	<i>Ficus rubiginosa f. glabrescens</i>	Port Jackson Fig	16	High	Retain	
168a	<i>Ficus rubiginosa f. glabrescens</i>	Port Jackson Fig	18	High	Retain	
169	<i>Underscribed species</i>	Underscribed species	8	Little	Remove	
170	<i>Eucalyptus sp.</i>	Large Leaved Fig	3	Little	Remove	Minor Vegetation
171	<i>Celtis striensis</i>	Chinese Nettle Tree	7	Little	Remove	Garden Escape
172	<i>Erythrina x Sikesii</i>	Indian Coral Tree	9	Little	Remove	Inconspicuous
173	<i>Ficus macrophylla</i>	Moreton Bay Fig	10	Little	Remove	Weed species
174	<i>Ficus macrophylla</i>	Moreton Bay Fig	18	High	Remove	Weed species
175	<i>Ficus macrophylla</i>	Moreton Bay Fig	18	High	Remove	Weed species
176	<i>Ligustrum lucidum</i>	Large leaved Privet	8	High	Remove	Weed species
176a	<i>Ficus macrophylla</i>	Moreton Bay Fig	13	Intrusive	Remove	Weed species
177	<i>Ficus macrophylla</i>	Moreton Bay Fig	16	High	Remove	
178	<i>Populus alba</i>	Silver Poplar	16	High	Remove	
179	<i>Ficus macrophylla</i>	Moreton Bay Fig	15	High	Remove	Weed species
180	<i>Ficus macrophylla</i>	Moreton Bay Fig	17	High	Remove	
181	<i>Ficus macrophylla</i>	Moreton Bay Fig	16	High	Remove	
182	<i>Ficus macrophylla</i>	Moreton Bay Fig	12	High	Remove	
182a	<i>Eucalyptus sp.</i>	Gum	18	High	Remove	
183	<i>Ficus macrophylla</i>	Moreton Bay Fig	5	High	Remove	
184	<i>Ficus macrophylla</i>	Moreton Bay Fig	12	High	Remove	
185	<i>Ficus macrophylla</i>	Moreton Bay Fig	13	High	Remove	
1						



**LEGEND**

	SITE BOUNDARY
	EXISTING TREE RETAINED
	EXISTING TREES TO BE TRANSPLANTED (NEW LOCATIONS)
	TURF
	PLANTING ON GROUND
	GRAVEL MULCH
	STONE FLAGGING
	PROPOSED BRICK UNIT PAVING
	PROPOSED CONCRETE PAVING
	BOUNDED GRAVEL DRIVE SURFACE
	EXISTING SPOT LEVEL
	EXISTING CONTOUR
	PROPOSED RL

- 3 LA-009
- 1 LA-009
- 2.5 LA-009
- 6 LA-009
- 7 LA-009
- 4 LA-009
- 8 LA-009
- 9 LA-009

CLIENT  
Sydney Church of England  
Grammar School (Shore)

ARCHITECTS  
P D Moyoh Pty Ltd Architects  
T + 61 2 9938 0488 F +61 2 9938 6424  
LANDSCAPE ARCHITECTS  
Taylor Brammer  
T + 61 2 9387 8855 F +61 2 9387 8155

ARCHITECTS  
Tonner Architects  
T + 61 2 9281 4399 F +61 2 9281 4331  
PROJECT MANAGER  
Fitwoller Group  
T + 61 2 8925 6701 F +61 2 8925 6798

Rev	Date	Description	Checked	Auth.
A	24.11.10	PROJECT APPLICATION	DMT	DMT
B	01.12.10	ARBORISTS CO-ORD.	DMT	DMT
C	16.09.11	UPDATED ARCH.	DMT	DMT
D	21.02.13	S75W MODIFICATION	DMT	DMT
E	11.09.13	S75W MODIFICATION	DMT	DMT

Proj.	Arch.	Drawn
DMT	AC	AC
DMT	AC	AC

10-027s 01:12:10 1:500 @ A1

Do not scale drawings. Verify all dimensions on site. Notify architect of all discrepancies.



Project  
GRAYTHWAITE  
STAGE 1 PROJECT  
APPLICATION  
Drawing Title  
LANDSCAPE HARDWORKS  
Drawing No.  
LT.005  
Revision  
E

Project  
GRAYTHWAITE  
STAGE 1 PROJECT  
APPLICATION  
Drawing Title  
LANDSCAPE HARDWORKS  
Drawing No.  
LT.005  
Revision  
E

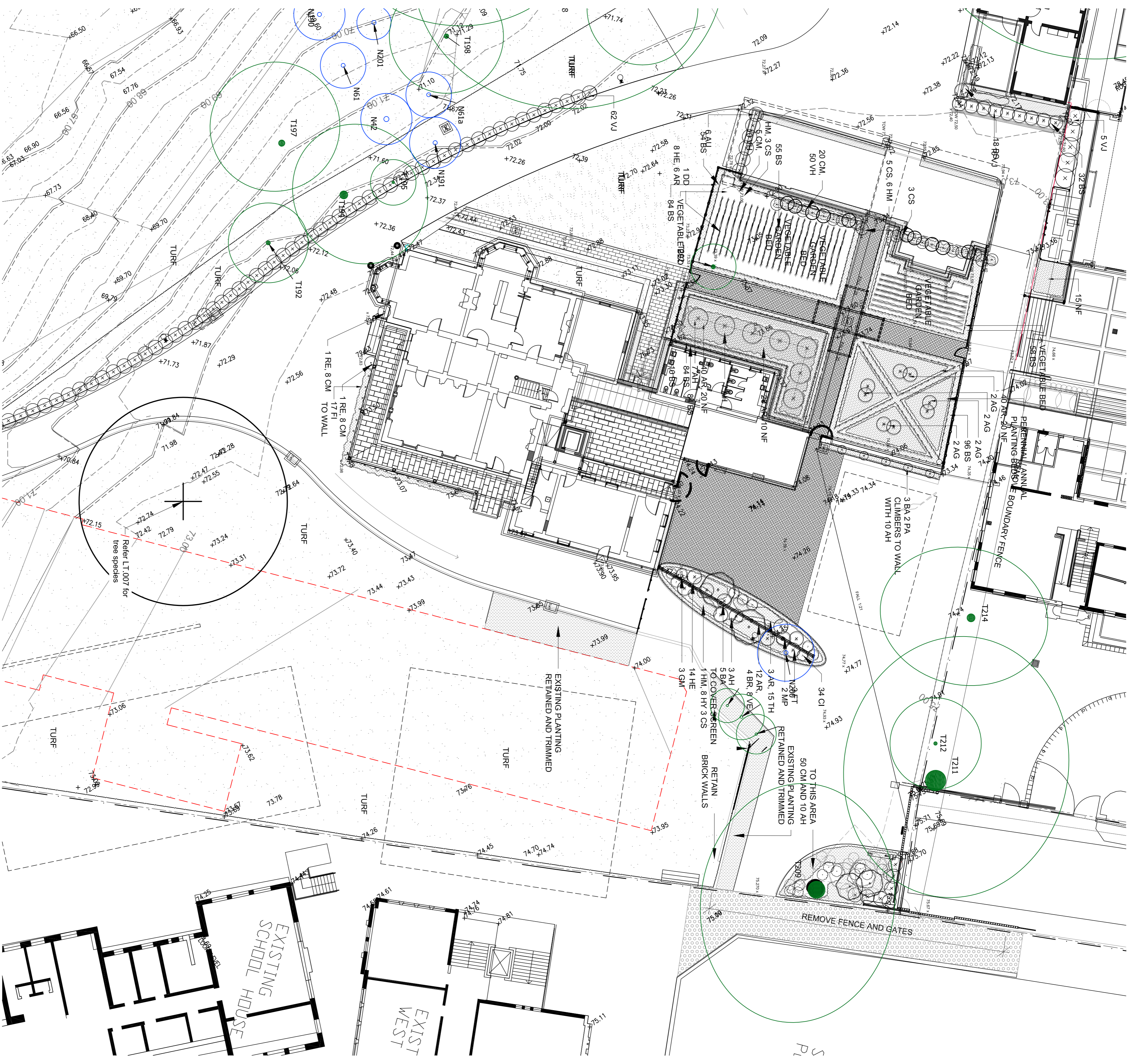


Taylor Brammer  
218 Oxford Street, Woollahra, NSW, Australia, 2025  
Tel: (02) 9387 8855 Fax: (02) 9387 8155  
e: sydney@taylorbrammer.com.au

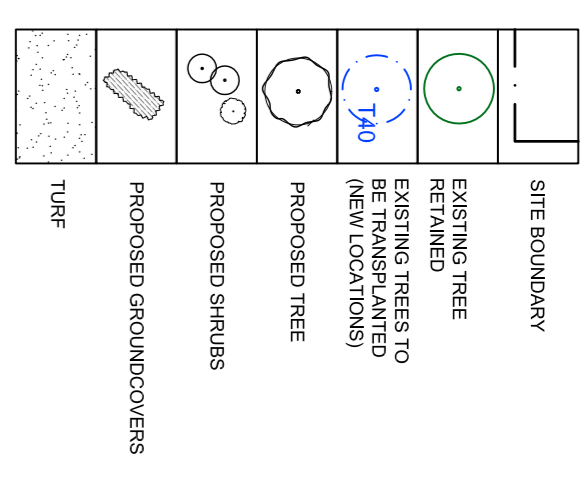
ARCHITECTS  
P D Moyoh Pty Ltd Architects  
T + 61 2 9938 0488 F +61 2 9938 6424  
LANDSCAPE ARCHITECTS  
Taylor Brammer  
T + 61 2 9387 8855 F +61 2 9387 8155



CLIENT  
Sydney Church of England  
Grammar School (Shore)  
Blue Street, North  
Sydney NSW 2060  
T + 61 2 9923 2277  
F + 61 2 9922 2689



**LEGEND PLANTING**



**INDICATIVE PLANT SCHEDULE**

ID	BOTANICAL NAME	COMMON NAME	HEIGHT (m)	SIZE
<b>TREES</b>				
AZ	Angophora costata	Sydney Bark Apple	15m	45L
CI	Corylia avellana	Common Hazel	6m	45L
DD	Dryas octopetala	Diagon Blood tree	4m	45L
GA	Gonolobus australis	Fluffy egg plant	8m	45L
LC	Leptosiphon confertus	Bushlark	10m	75L
MA	Magnolia x soulangeana	Magnolia	6m	45L
PA	Parsonsia americana	Accoado tree	8m	45L
<b>SHRUBS</b>				
AG	Agave attenuata	Agave	1m	300mm
AH	Abutilon x hybridum	Standard Abutilon	1m	200mm
AR	Artemisia adoniscens	Tree Wormwood	0.3m	200mm
BA	Buxus sempervirens	English Box	140mm	140mm
CA	Corylia australis	Australian cordyline	2m	45L
CS	Corylia ginea Variegata	Clear plant	0.3m	100mm
FT	Fuchsia stricta 'Congestif'	Cordyline	1m	200mm
GM	Gardenia Tom Thumb	Tom thumb fuchsia	1.2m	200mm
HE	Gardenia magnifica	Gardenia	1.5m	200mm
HM	Heliotropium adoniscens	Cherry pie	1m	200mm
MU	Hydrangea macrophylla	Hydrangea	1.5m	300mm
PS	Psidium paniculata	Orange Jessamine	3m	300mm
RE	Rapizium Cactiliumum	Purple Guava	4m	300mm
RO	Rosa sp.	Lady palm	2m	300mm
RS	Rosa sp.	Tuscan blue rosemary	1m	200mm
RS	Rosa sp.	Selected Rose Species	2m	200mm
<b>GROUNDCOVERS / VINES</b>				
BA	Banksia banksia	Banksia rose	100mm	100mm
BR	Brychycome multifida Break 'O Day'	Rock Daisy	0.3m	100mm
CM	Civica minima	Chives	0.3m	100mm
FP	Ficus pumila 'Marina'	Small leaved ficus	100mm	100mm
HY	Hydrangea paniculata	St. Johns Wort	0.5m	100mm
IR	Iris sanguinea	Blood Iris	0.5m	100mm
NF	Nepeta x trasei	Cal Mint	1.2m	100mm
TH	Thymus vulgaris	Thyme	0.5m	100mm
VE	Veronica officinalis	Verberna	0.5m	100mm
VH	Viola hecabeae	Native violet	0.1m	100mm

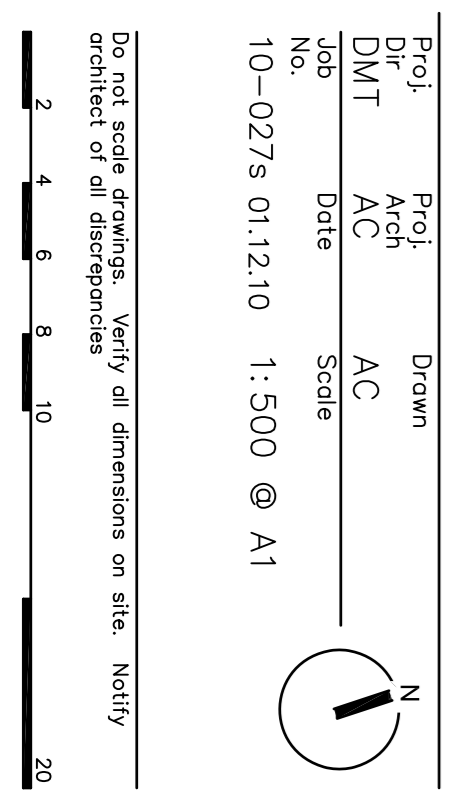
**CLIENT**  
 Sydney Church of England Grammar School (Shore)  
 Blue Street, North Sydney, NSW 2060  
 T +61 2 9923 2277  
 F +61 2 9922 2689

**ARCHITECTS**  
 P D Moxon Pty Ltd Architects  
 T +61 2 9998 0488 F +61 2 9958 6424  
 LANDSCAPE ARCHITECTS  
 Taylor Brammer  
 T +61 2 9387 8855 F +61 2 9387 8150

**ARCHITECTS**  
 Tomer Architects  
 T +61 2 9281 4399 F +61 2 9281 4337

**PROJECT MANAGER**  
 Fitzwiller Group  
 T +61 2 8928 6701 F +61 2 8928 9729

Rev	Date	Description	Checked	Auth.
A	24.11.10	PROJECT APPLICATION	DMT	DMT
B	01.12.10	ARBORISTS CO-ORD.	DMT	DMT
C	16.09.13	UPDATED ARCH.	DMT	DMT
D	21.02.13	S75W MODIFICATION	DMT	DMT
E	11.09.13	S75W MODIFICATION	DMT	DMT



**Project**  
 GRAYTHWAITE STAGE 1 PROJECT APPLICATION  
 Drawing Title  
 LANDSCAPE SOFTWARES  
 Drawing No. LT.006  
 Revision E

**taylor**  
**brammer**  
 218 Oxford Street, Woollahra, NSW, Australia, 2025  
 tel: (02) 9387 8855 fax: (02) 9387 8155  
 e: sydney@taylorbrammer.com.au



**LEGEND PLANTING**

	SITE BOUNDARY
	EXISTING TREE RETAINED
	EXISTING TREES TO BE TRANSPLANTED (NEW LOCATIONS)
	PROPOSED TREE

**CLIENT**  
 Sydney Church of England Grammar School (Shore)  
 Blue Street, North Sydney NSW 2060  
 T +61 2 9923 2277  
 F +61 2 9922 2889

**ARCHITECTS**  
 P D Moyah Pty Ltd Architects  
 T +61 2 9998 0488 F +61 2 9956 6424  
 LANDSCAPE ARCHITECTS  
 Taylor Brammer  
 T +61 2 9397 8855 F +61 2 9387 8155

**ARCHITECTS**  
 Tomer Architects  
 T +61 2 9281 4399 F +61 2 9281 4337

**PROJECT MANAGER**  
 Fitzwaller Group  
 T +61 2 8925 6701 F +61 2 8925 6798

Rev	Date	Description	Checked	Auth.
A	24.11.10	PROJECT APPLICATION	DMT	DMT
B	01.12.10	ARBORISTS CO-ORD.	DMT	DMT
C	16.09.11	UPDATED ARCH.	DMT	DMT
D	21.02.13	S7SW MODIFICATION	DMT	DMT
E	11.09.13	S7SW MODIFICATION	DMT	DMT

Proj.	Arch	Drawn
DMT	AC	AC
Date	Date	Scale
10-0273	01.12.10	1:500 @ A1

Do not scale drawings. Verify all dimensions on site. Notify architect of all discrepancies

5 10 15 20 25 50

**Project**  
 GRAYTHWAITE  
 STAGE 1 PROJECT  
 APPLICATION  
 Drawing Title  
 LANDSCAPE TREE PLAN  
 Drawing No.  
 LT. 007  
 Revision  
 E

**taylor**  
**brammer**

218 Oxford Street, Woodliffra, NSW, Australia, 2025  
 tel: (02) 9387 8855 fax: (02) 9387 8155  
 e: sydney@taylorbrammer.com.au

