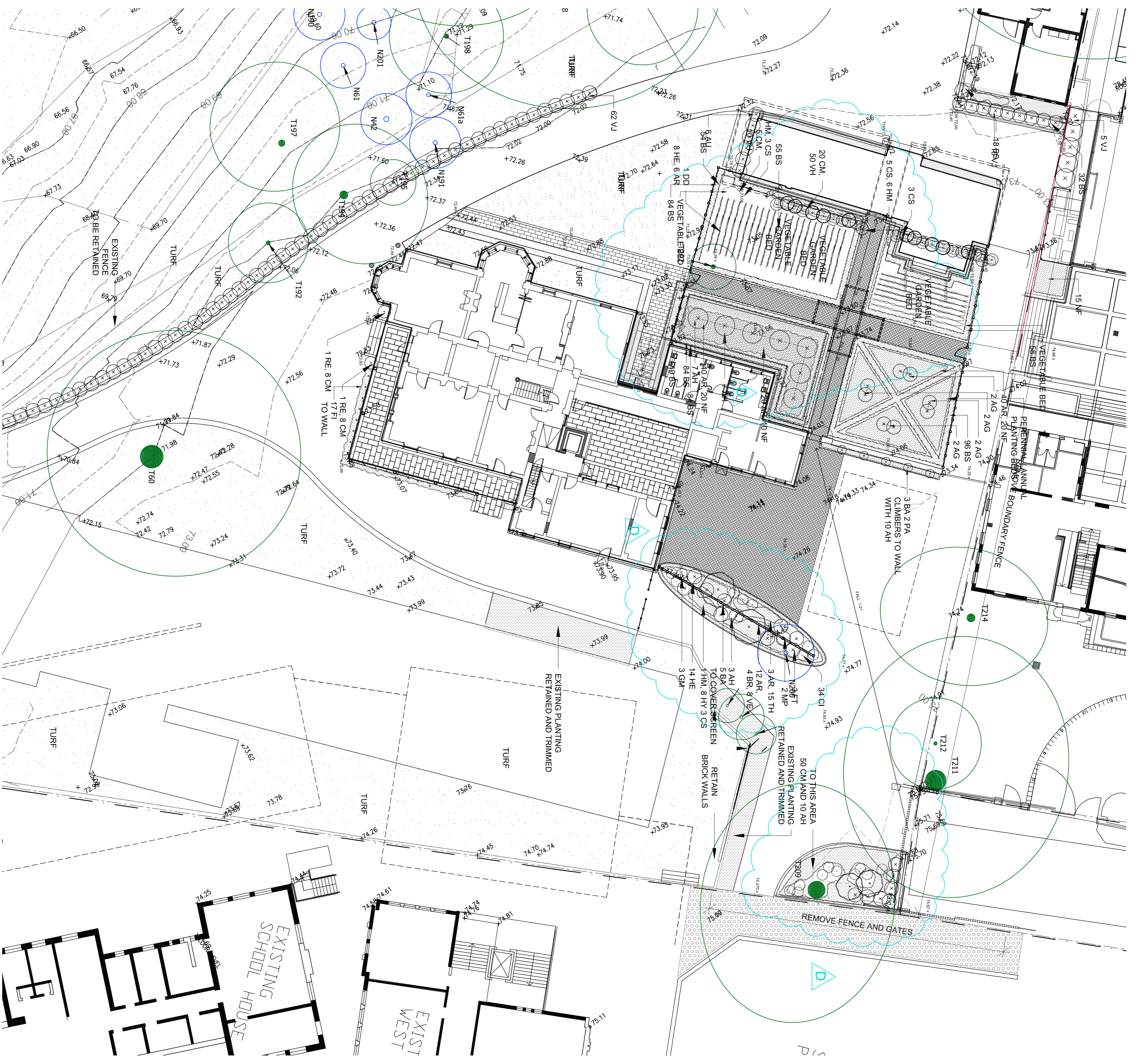


EXISTING TREE SCHEDULE- HERITAGE SIGNIFICANCE AND ACTION

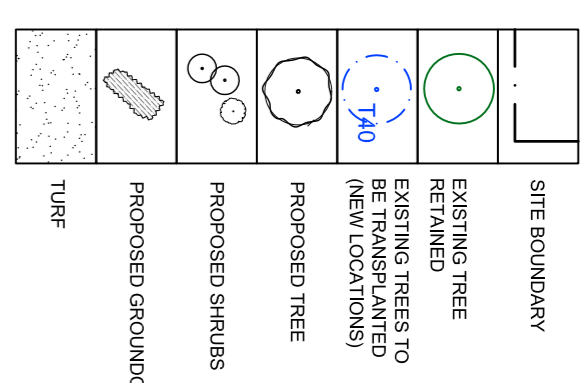
TREE NO.	BOTANICAL NAME	COMMON NAME	HEIGHT (m)	HERITAGE SIGNIFICANCE	ACTION	COMMENT
1	Sapum sebiferum	Chinese Tallow Tree	6	Little	Retain	
2	Sapum sebiferum	Chinese Tallow Tree	4.5	Little	Remove	
3	Sapum sebiferum	Chinese Tallow Tree	4.5	Little	Retain	
4	Sapum sebiferum	Chinese Tallow Tree	5.5	Little	Retain	
5	Ficus benjamina	Chinese Elm	7.5	Little	Remove	
6	Ficus benjamina	Chinese Elm	9	Little	Retain	
7	Ficus benjamina	Chinese Elm	7	Little	Retain	
8	Cinnamomum camphora	Camphor Tree	12	Moderate	Retain	
9	Lophostemon confertus	Brush Box	8	Moderate	Remove	
10	Rubria pseuduocacia	Black locust	7	Little	Remove	
11	Rubria pseuduocacia	Black locust	8	Little	Remove	
12	Rubria pseuduocacia	Black locust	7	Little	Remove	
13	Rubria pseuduocacia	Black locust	7	Little	Remove	
14	Rubria pseuduocacia	Black locust	8.5	Little	Remove	
15	Rubria pseuduocacia	Black locust	7	Little	Remove	
16	Rubria pseuduocacia	Black locust	7	Little	Remove	
17	Rubria pseuduocacia	Black locust	9	Little	Remove	
18	Cinnamomum camphora	Camphor Tree	12	Moderate	Remove	
19	Salix babingtonia	Weeping Willow	13	Little	Remove	
20	Rubria pseuduocacia	Black locust	7	Little	Remove	
21	Rubria pseuduocacia	Black locust	7	Little	Remove	
22	Rubria pseuduocacia	Black locust	11	Little	Remove	
23	Rubria pseuduocacia	Black locust	11	Little	Remove	
24	Lophostemon confertus	Brush Box	12	Moderate	Remove	
25	Lophostemon confertus	Brush Box	10	Moderate	Remove	
26	Rubria pseuduocacia	Black locust	6	Little	Remove	
27	Rubria pseuduocacia	Black locust	7	Little	Remove	
28	Rubria pseuduocacia	Black locust	9	Little	Remove	
29	Rubria pseuduocacia	Black locust	11	Moderate	Remove	
30	Cinnamomum camphora	Camphor Tree	10	Little	Remove	
31	Rubria pseuduocacia	Black locust	9	Little	Remove	
32	Rubria pseuduocacia	Black locust	11	Little	Remove	
33	Rubria pseuduocacia	Black locust	11	Little	Remove	
34	Cinnamomum camphora	Camphor Tree	13	Moderate	Remove	
35	Populus nigra 'Italica'	Lombardy Poplar	12	Little	Remove	
36	Cinnamomum camphora	Camphor Tree	14	Moderate	Remove	
37	Casuarina glauca	Swamp Oak	14	Little	Remove	
37a	Casuarina glauca	Swamp Oak	9	Little	Remove	
38	Ficus obliqua	Small Leaved Fig	16	High	Retain	
39	Lophostemon confertus	Brush Box	20	High	Retain	
40	Stenocarpus simulans	Firewheel Tree	14	High	Retain	
41	Washingtonia robusta	Washingtonia Palm	14	High	Retain	
42	Cinnamomum camphora	Camphor Laurel	16	Little	Retain	
43	Cyclocarya obtusata	Peppercorn Tree	15	Little	Retain	
44	Cinnamomum camphora	Camphor Laurel	14	Little	Retain	
45	Lophostemon confertus	Brush Box	14	Little	Remove	
46a	Alectryon tomentosum	Rambutan	7	Intensive	Remove	
47	Ligustrum lucidum	Large leaved Privet	14	Little	Remove	
48	Undeidentified species	Undeidentified species	14	Little	Remove	
49	Atacaula columnaris	Cooks Pine	30	Exceptional	Retain	
50	Cinnamomum camphora	Camphor Laurel	11	Little	Remove	
51	Washingtonia robusta	Washingtonia Palm	10	Little	Retain	
52	Schottela acinorophylla	Umbrella tree	7	Little	Remove	
53	Cupressocypar x leylandi	Leyland Cypress	10	Little	Remove	
54	Cupressocypar x leylandi	Leyland Cypress	9	Little	Remove	
55	Cupressocypar x leylandi	Leyland Cypress	8	Little	Remove	
56	Cupressocypar x leylandi	Leyland Cypress	10	Little	Remove	
57	Cupressocypar x leylandi	Leyland Cypress	9	Little	Remove	
58	Cupressocypar x leylandi	Leyland Cypress	9	Little	Remove	
59	Cinnamomum camphora	Camphor Laurel	6	Little	Remove	
60	Ficus obliqua	Small Leaved Fig	12	High	Retain	
61	Washingtonia robusta	Washingtonia Palm	15	Moderate	Retain	
61a	Washingtonia robusta	Washingtonia Palm	14	Moderate	Retain	
62	Ptilosporum undulatum	Transplant	6	Little	Remove	
63	Alectryon tomentosum	Rambutan	6	Little	Remove	
64	Ombartinus populifolius	Bleeding Heart	6	Little	Remove	
65	Populus alba	Silky Poplar	5	Little	Remove	
66	Populus alba	Silky Poplar	6	Little	Remove	
67	Populus alba	Silky Poplar	10	Little	Remove	
68	Populus alba	Silky Poplar	14	High	Remove	
68a,69,70,70a	Acacia sp. Paranaterensis	Sydney Green Wattle	12, 13, 14, 11	High	Remove	
71	Ficus macrophylla	Moreton Bay Fig	15	High	Retain	
71a	Glochidion ferrandi	Cheese Tree	9	Little	Retain	
72	Ptilosporum undulatum	Transplant	13	Little	Retain	
73	Ficus macrophylla	Moreton Bay Fig	15	High	Retain	
74	Ficus macrophylla	Moreton Bay Fig	15	High	Retain	
75	Ficus obliqua	Small Leaved Fig	7	Little	Retain	
75a	Ptilosporum undulatum	Transplant	9	Little	Retain	
76	Ptilosporum undulatum	Transplant	7	Little	Retain	
77	Ptilosporum undulatum	Transplant	8	Little	Retain	
78	Ptilosporum undulatum	Transplant	7	Little	Retain	
79	Glochidion ferrandi	Cheese Tree	8	Little	Retain	
80	Ptilosporum undulatum	Transplant	11	Little	Retain	
83	Ptilosporum undulatum	Transplant	10	Little	Retain	
84	Malaena sphenoloides	Prickly Paperbark	7	Little	Retain	
85	Malaena sphenoloides	Prickly Paperbark	7	Little	Retain	
85a	Malaena sphenoloides	Prickly Paperbark	7	Little	Retain	
86	Malaena sphenoloides	Prickly Paperbark	7	Little	Retain	
87	Malaena sphenoloides	Prickly Paperbark	7	Little	Retain	
88	Celtis sinensis	Chinese Nettie Tree	7	Little	Remove	
89	Ficus macrophylla	Moreton Bay Fig	18	High	Retain	
90	Ficus macrophylla	Moreton Bay Fig	18	High	Retain	
90a	Ficus macrophylla	Moreton Bay Fig	18	High	Retain	
91	Eydhina x SJKesii	Indian Coral Tree	12	Little	Remove	
92	Eydhina x SJKesii	Indian Coral Tree	12	Little	Remove	
92a	Eydhina x SJKesii	Indian Coral Tree	10	Little	Remove	
93	Eydhina x SJKesii	Indian Coral Tree	12	Little	Remove	
93a	Eydhina x SJKesii	Indian Coral Tree	12	Little	Remove	
94	Eydhina x SJKesii	Indian Coral Tree	11	Little	Remove	
95	Eydhina x SJKesii	Indian Coral Tree	14	Little	Remove	
96	Eydhina x SJKesii	Indian Coral Tree	11	Little	Remove	
97	Eydhina x SJKesii	Indian Coral Tree	9	Little	Remove	
98	Eydhina x SJKesii	Indian Coral Tree	8	Little	Remove	
99	Ficus macrophylla	Moreton Bay Fig	17	High	Retain	
100	Ficus macrophylla	Moreton Bay Fig	15	High	Retain	
101	Populus alba	Silky Poplar	12	Little	Remove	

TREE NO.	BOTANICAL NAME	COMMON NAME	HEIGHT (m)	HERITAGE SIGNIFICANCE	ACTION	COMMENT
102	Populus alba	Silky Poplar	12	Little	Remove	Weed species
103	Populus robusta	Silky Oak	17	Little	Remove	Within Footprint of Works
104	Atacaula columnaris	Hoop Pine	8	Little	Retain	
105	Baccharis discolor	Small Leaved Fig	10	Little	Retain	
106a	Baccharis discolor	Queenstand Lacebark	12	Little	Retain	
107	Ficus macrophylla	Moreton Bay Fig	14	High	Retain	
108	Ficus macrophylla	Moreton Bay Fig	16	High	Retain	
109	Ficus macrophylla	Moreton Bay Fig	12	High	Retain	
110	Jacaranda mimosifolia	Jacaranda	9	Little	Retain	
111	Populus alba	Silky Poplar	10	Little	Remove	Within Footprint of Works
112	Ficus macrophylla	Moreton Bay Fig	17	High	Retain	
114	Ficus rubiginosa f. glabrescens	Port Jackson Fig	10	Little	Retain	
115	Ficus macrophylla	Moreton Bay Fig	13	High	Retain	
116	Ficus macrophylla	Moreton Bay Fig	15	High	Retain	
117	Ficus macrophylla	Moreton Bay Fig	20	High	Retain	
118	Eucalyptus saligna	Sydney Blue Gum	15	Little	Retain	
119	Ptilosporum undulatum	Transplant	11	Little	Retain	
120	Ptilosporum undulatum	Transplant	12	Little	Retain	
121	Ficus rubiginosa f. glabrescens	Port Jackson Fig	12	High	Retain	
122	Olea africana car. Africana	African Olive	8	Little	Remove	Weed species
123	Ptilosporum undulatum	Transplant	7	Little	Remove	Weed species
124	Olea africana car. Africana	African Olive	9	Little	Remove	Weed species
125	Ficus sp.	Small Leaved Fig	13	Little	Retain	
126	Ptilosporum undulatum	Transplant	14	Little	Retain	
127	Ptilosporum undulatum	Transplant	12	Little	Retain	
128	Olea africana car. Africana	African Olive	9	Little	Remove	Weed species
130	Olea africana car. Africana	African Olive	11	Little	Remove	Weed species
131	Ptilosporum undulatum	Transplant	9	Little	Remove	Weed species
132	Olea africana car. Africana	African Olive	11	Little	Remove	Weed species
133	Olea africana car. Africana	African Olive	12	Little	Remove	Weed species
134	Glochidion ferrandi	Cheese Tree	10	Little	Retain	
135	Ptilosporum undulatum	Transplant	13	Little	Retain	
136	Ficus sp.	Small Leaved Fig	10	Little	Retain	
137	Eydhina x SJKesii	Indian Coral Tree	15	Little	Remove	Weed species
137a	Ptilosporum undulatum	Transplant	9	Little	Remove	Weed species
137b	Eydhina x SJKesii	Indian Coral Tree	15	Little	Remove	Weed species
137c	Eydhina x SJKesii	Indian Coral Tree	15	Little	Remove	Weed species
138	Eydhina x SJKesii	Indian Coral Tree	15	Little	Remove	Weed species
139	Ptilosporum undulatum	Transplant	10	Little	Remove	Within Footprint of Works
140	Ficus rubiginosa f. glabrescens	Port Jackson Fig	7	Little	Remove	Inconsistent
141	Ptilosporum undulatum	Transplant	14	High	Retain	
141a	Ptilosporum undulatum	Transplant	12	High	Retain	
142	Ptilosporum undulatum	Transplant	10	Little	Remove	Weed species
142a	Ptilosporum undulatum	Transplant	10	Little	Remove	Weed species
143	Olea africana car. Africana	African Olive	12	Little	Remove	Weed species
144	Ficus sp.	Small Leaved Fig	8	Little	Retain	
145	Ptilosporum undulatum	Transplant	10	Little	Remove	Weed species
146	Ptilosporum undulatum	Transplant	8	Little	Remove	Weed species
147	Ptilosporum undulatum	Transplant	10	Little	Remove	Weed species
148	Ficus rubiginosa f. Rubiginosa	Port Jackson Fig	12	Little	Remove	Weed species
149	Olea africana car. Africana	African Olive	10	Little	Remove	Weed species
150	Olea africana car. Africana	African Olive	12	Little	Remove	Weed species
151	Ficus rubiginosa f. glabrescens	Port Jackson Fig	13	High	Remove	Weed species
152	Ligustrum lucidum	Large leaved Privet	15	High	Remove	Weed species
153	Ficus macrophylla	Moreton Bay Fig	8	Little	Remove	Weed species
153a	Olea africana car. Africana	African Olive	8	Little	Remove	Weed species
154	Populus alba	Silky Poplar	13	Little	Remove	Weed species
155	Lophostemon confertus	Brush Box	11	Moderate	Retain	
156	Ficus sp.	Small Leaved Fig	9	Little	Retain	
157	Eucalyptus bilineata	Blackbutt	11	Little	Retain	
158	Cinnamomum camphora	Camphor Laurel	9	Little	Remove	Within Footprint of Works
159	Eucalyptus bilineata	Blackbutt	10	Little	Retain	
160	Ficus rubiginosa f. glabrescens	Port Jackson Fig	8	High	Retain	
161	Ficus rubiginosa f. glabrescens	Port Jackson Fig	18	High	Retain	
162	Ficus rubiginosa f. glabrescens	Port Jackson Fig	19	High	Retain	
163	Ficus macrophylla	Moreton Bay Fig	18	High	Retain	
164	Ficus sp.	Small Leaved Fig	16	High	Remove	Unstable
165	Doronicolum gahnerus	Port Jackson Fig	15	Moderate	Retain	
166	Lophostemon confertus	Brush Box	11	Moderate	Retain	
167	Lophostemon confertus	Brush Box	12	Moderate	Retain	
168	Ficus rubiginosa f. glabrescens	Port Jackson Fig	15	High	Retain	
169	Ficus rubiginosa f. glabrescens	Port Jackson Fig	18	High	Retain	
170	Undeidentified species	Undeidentified species	8	Little	Remove	
171	Eucalyptus sp.	Jacaranda	3	Little	Remove	Minor Vegetation
172	Celtis sinensis	Chinese Nettie Tree	7	Little	Remove	Garden Escape
173	Eydhina x SJKesii	Indian Coral Tree	9	Little	Remove	Inconsistent
174	Ficus macrophylla	Moreton Bay Fig	10	Little	Remove	Weed species
175	Ficus macrophylla	Moreton Bay Fig	18	High	Remove	Weed species
176	Ligustrum lucidum	Large leaved Privet	8	High	Remove	Weed species
177a	Ficus macrophylla	Moreton Bay Fig	13	High	Remove	Weed species
177b	Ficus macrophylla	Moreton Bay Fig	16	High	Remove	Weed species
178	Populus alba	Silky Poplar	15	High	Remove	Weed species
179	Ficus macrophylla	Moreton Bay Fig	17	High	Remove	Weed species
180	Ficus macrophylla	Moreton Bay Fig	17	High	Remove	Weed species
181	Ficus macrophylla	Moreton Bay Fig	16	High	Remove	Weed species
182	Ficus macrophylla	Moreton Bay Fig	12	High	Remove	Weed species
182a	Eucalyptus sp.	Gum	18	High	Remove	Weed species
183	Ficus macrophylla	Moreton Bay Fig	5	High	Remove	Weed species
184	Ficus macrophylla	Moreton Bay Fig	12	High	Remove	Weed species
185	Ficus macrophylla	Moreton Bay Fig	13	High	Remove	Weed species
186	Ficus macrophylla	Moreton Bay Fig	18	High	Remove	Weed species
187	Acer negundo	Box Elder	10	High	Remove	Weed species
188	Morus nigra	Mulberry	7	Little	Remove	Inconsistent
189	Ligustrum lucidum	Large leaved Privet	9	Intensive	Remove	Garden Escape
190	Washingtonia robusta	Mexican Fan Palm	15	Moderate	Remove	Weed species
191	Washingtonia robusta	Washingtonia Palm	16	Moderate	Remove	Weed species
192	Lophostemon confertus	Brush Box	8	Moderate	Retain	
193	Lophostemon confertus	Brush Box	10	Moderate	Remove	Inconsistent
194	Lophostemon confertus	Brush Box	10	Moderate	Remove	Inconsistent
195	Trachycarpus fortunei	Chinese Windmill Palm	4	Little	Remove	Inconsistent
196	Atacaula columnaris	Cooks Pine	12	Little	Remove	Inconsistent
197	Lophostemon confertus	Brush Box	9	Moderate	Remove	Inconsistent
198	Lophostemon confertus	Brush Box	9	Moderate	Remove	Inconsistent
199	Licania mimosifolia	Jacaranda	10	Little	Remove	Inconsistent
200	Pimenta acitfolia	Franzoni	4	Little	Remove	Inconsistent
201	Washingtonia robusta	Washingtonia Palm	2	Little	Remove	Inconsistent
202	Washingtonia robusta	Washingtonia Palm	16	Little	Remove	Inconsistent

TREE NO.	BOTANICAL NAME	COMMON NAME	HEIGHT (m)	HERITAGE SIGNIFICANCE	ACTION	COMMENT
203	Pinus sp.	Pine	4	Little	Remove	Inconsistent



LEGEND PLANTING



INDICATIVE PLANT SCHEDULE

ID	BOTANICAL NAME	COMMON NAME	HEIGHT (m)	SIZE
TREES				
AZ	<i>Angophora costata</i>	Sydney Bark Apple	15m	45L1
C	<i>Corymbia</i>	Lemon Scented Gum	6m	45L1
DD	<i>Dryas laevis</i>	Diagon Blood tree	4m	45L1
GA	<i>Gonolobus aculeatus</i>	Fiddle-leaf fig	8m	45L1
LC	<i>Leopoldium confertus</i>	Bushy tree	10m	75L1
MA	<i>Magnolia x soulangeana</i>	Magnolia	6m	45L1
PA	<i>Parsonsia americana</i>	Accoado tree	8m	45L1
SHRUBS				
AG	<i>Agave attenuata</i>	Agave	1m	300mm
AH	<i>Abutilon x hybridum</i>	Standard Abutilon	1m	200mm
AR	<i>Azalea indica</i>	Tree Wooroom	0.3m	200mm
BS	<i>Buxus sempervirens</i>	English Box	140mm	140mm
CA	<i>Caryophyllus australis</i>	Australian cordyline	2m	45L
CI	<i>Corylia ginea</i>	Cashew	0.3m	100mm
CS	<i>Cordyline stricta</i>	Cordyline	1m	200mm
FT	<i>Ficus sp.</i>	Tree Ficus	1.2m	200mm
GM	<i>Gardenia magnifica</i>	Tom thumb Gardenia	1.5m	200mm
HE	<i>Heliotropium adpressens</i>	Cherry pie	1m	200mm
HM	<i>Hydrangea macrophylla</i>	Hydrangea	1.5m	300mm
MU	<i>Murraya paniculata</i>	Purple Guava	4m	300mm
PS	<i>Psidium cattleianum</i>	Lady palm	2m	300mm
RE	<i>Rosa sp.</i>	Selected Rose species	1m	200mm
RO	<i>Rosa sp.</i>	Selected Rose species	2m	200mm
GROUNDCOVERS / VINES				
BA	<i>Banksia laevis</i>	Banksia rose	-	100mm
BR	<i>Bryonia cretica</i>	Rock Daisy	0.3m	100mm
CM	<i>Clematis</i>	Clematis	0.3m	100mm
FP	<i>Ficus pumila</i>	Small leaved fig	0.5m	100mm
HY	<i>Hydrangea paniculata</i>	St. Johns Wort	0.5m	100mm
IR	<i>Iris sanguinea</i>	Blood Iris	0.5m	100mm
NF	<i>Nepeta x trachelium</i>	Cal Mint	1.2m	100mm
TH	<i>Thymus vulgaris</i>	Thyme	0.5m	100mm
VE	<i>Veronica officinalis</i>	Veronica	0.5m	100mm
VH	<i>Viola hecabeae</i>	Native violet	0.1m	100mm

CLIENT
 Sydney Church of England Grammar School (Shore)
 Blue Street, North Sydney, NSW 2060
 T +61 2 9923 2277
 F +61 2 9923 2889

ARCHITECTS
 P D Moxon Pty Ltd Architects
 9956 6424 9998 0488
 T +61 2 9923 2277
 F +61 2 9923 2889

ARCHITECTS
 Tomer Architects
 T +61 2 9281 4399
 F +61 2 9281 4337

PROJECT MANAGER
 Fitzwiller Group
 T +61 2 8928 6701
 F +61 2 8928 9729

Rev Date Description Checked Auth.

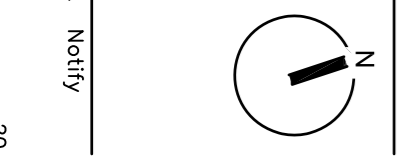
A	24.11.10	PROJECT APPLICATION	DMT	DMT
B	01.12.10	ARBORISTS CO-ORD.	DMT	DMT
C	16.09.11	UPDATED ARCH.	DMT	DMT
D	21.02.13	S7/SW MODIFICATION	DMT	DMT

Proj. Arch. AC

Dir	DMT	DMT
Arch	DMT	DMT
AC	DMT	DMT

Date Scale

Job No.	10-0273	01:12:10	1:500 @ A1
---------	---------	----------	------------



Project
 GRAYTHWAITE STAGE 1 PROJECT APPLICATION
 Drawing Title
 LANDSCAPE SOFTWARES
 Drawing No. LT.006
 Revision D

taylor & brammer
 218 Oxford Street, Woollahra, NSW, Australia, 2025
 Tel: (02) 9387 8855 Fax: (02) 9387 8155
 e: sydney@taylorbrammer.com.au



LEGEND PLANTING

- SITE BOUNDARY
- EXISTING TREE RETAINED
- EXISTING TREES TO BE TRANSPLANTED (NEW LOCATIONS)
- PROPOSED TREE

PLANTING TO BE NOMINATED

TREES 18, 30, 34 & 37 TO BE REMOVED AND REPLACED IN ACCORDANCE WITH SECTION 13.16 OF ABORIGINAL CULTURAL REPORT PREPARED BY EARTHSCAPE HORTICULTURAL SERVICES

Rev	Date	Description	Checked	Auth.	Proj.	Drawn
A	24.11.10	PROJECT APPLICATION	DMT	DMT	Arch	AC
B	01.12.10	ARBORISTS CO-ORD.	DMT	DMT	AC	Scale
C	16.09.11	UPDATED ARCH.	DMT	DMT	Date	Scale
D	21.02.13	5/3W MODIFICATION	DMT	DMT	10-0273	01.12.10 1:500 @ A1

CLIENT
 Sydney Church of England Grammar School (Shore)
 Blue Street, North Sydney NSW 2060
 T +61 2 9923 2277
 F +61 2 9922 2889

ARCHITECTS
 P D Moyah Pty Ltd Architects
 9956 6424/9958 0488 F +61 2 9281 4337
 T +61 2 9281 4399 F +61 2 8925 8798

ARCHITECTS
 Tomer Architects
 T +61 2 9281 4399 F +61 2 9281 4337

PROJECT MANAGER
 Fitzwiler Group
 T +61 2 8925 6701 F +61 2 8925 8798

LANDSCAPE ARCHITECTS
 Taylor Brammer
 T +61 2 9387 8855 F +61 2 9387 8155

Project
 GRAYTHWAITE STAGE 1 PROJECT APPLICATION

Drawing Title
 LANDSCAPE TREE PLAN

Drawing No.
 LT. 007

Revision
 D

taylor
brammer

218 Oxford Street, Woodliffra, NSW, Australia, 2025
 tel: (02) 9387 8855 fax: (02) 9387 8155
 e: sydney@taylorbrammer.com.au

