

DESIGN STATEMENT

Job 12051

METCASH LTD. STATE DISTRIBUTION CENTRE
BUNGARRIBEE INDUSTRIAL ESTATE
HUNTINGWOOD WEST NSW

HIGH BAY EXTENSION

The construction of the first and major portion of the Metcash development was completed in February 2012, the design of which set the aesthetic benchmark for subsequent developments on the Bungarribee Industrial Estate. The height of this proposed stage of the development is obviously in excess of that of the existing building and a number of alternative designs were considered in an attempt to reduce the perceived height.

Proposals to subdue the presentation of the southern façade to the motorway by use of a single material and single colour, much as in the Arnotts building, of a similar height to the east of the Bungarribee site, was thought to be a retreat from the challenge.

The proposal for the high bay extension for Metcash continues the contemporary external design which will be apparent from the adjacent M4 motorway, where the original colour palette as been reproduced and the chevron theme from the existing building has been suggested in the bold feature band above the polycarbon panelled section which provides a curtain wall of back lit window.

The overall effect, aided by the great width of the building is to provide a horizontal and relatively low, sleek elevation. Samples of colours and materials are shown on the boards which are included in the application.

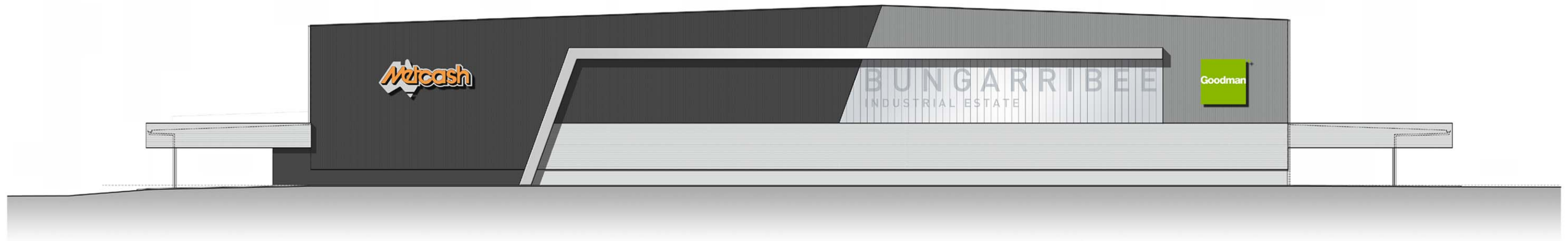
The road level of the M4 directly in front of the building is approximately 3.5 metres higher than the subject site, further reducing the perceived building height from passing vehicles.

Existing trees and recent plantings in the 20 metre setback along with proposed new planting between the building and the service road will further soften the overall effect, as shown in the photo montage.

Signage for the Estate on this major façade will add a further striking element to the design.



Brian Woodmansey
GILES TRIBE ARCHITECTS



PROPOSED HIGH BAY WAREHOUSE SOUTH ELEVATION - UTILISING ESTATE DESIGN ELEMENTS AND COLOUR PALETTE



CURRENT FACADE DESIGN FOR ESTATE SITE 2A / 2B



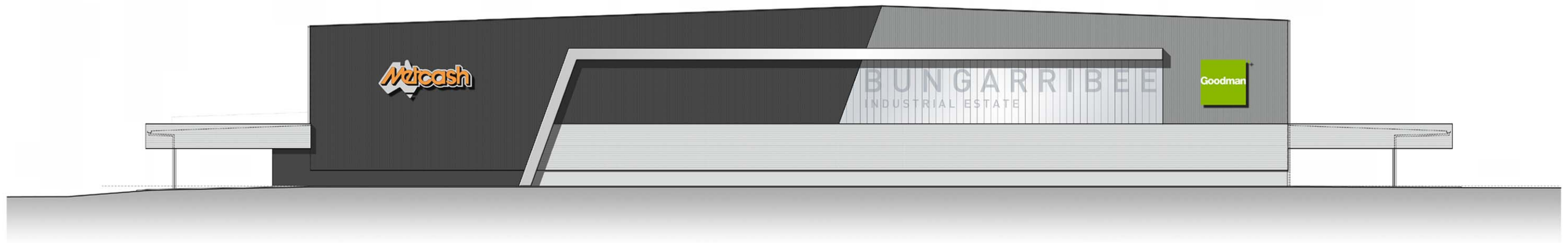
AS BUILT METCASH FACILITY



OPTIONAL BACKLIGHTING TO CREATE FOCAL POINTS AND REDUCE SCALE OF FACADE



SEAMLESS POLYCARBONATE WALL SHEETING WITH FEATURE BAND FRAMING



PROPOSED 27M HIGH BAY WAREHOUSE SOUTH ELEVATION - UTILISING HORIZONTAL ELEMENTS TO VISUALLY REDUCE HEIGHT



PRECEDENT IMAGE
RECALL HIGH BAY WAREHOUSE APPROX 30M HIGH



PRECEDENT IMAGE
BLUM HIGH BAY WAREHOUSE APPROX 30M HIGH



PRECEDENT IMAGE
ARNOTT'S HIGH BAY WAREHOUSE APPROX 30M HIGH



PHOTO MONTAGE - SOUTH ELEVATION TO M4 MORTORWAY