



Maules Creek Coal Aboriginal Cultural Heritage Management Plan

May 2025

Whitehaven Coal Limited

ABN 68 124 425 396

Level 28, 259 George Street, Sydney NSW 2000

PO Box R1113, Royal Exchange NSW 1225

02 8222 1100

info@whitehavencoal.com.au

www.whitehavencoal.com.au

Contents

| | | |
|--------------|---|-----------|
| 1 | Introduction | 4 |
| 1.1 | Overview of approved operations | 4 |
| 1.2 | Baseline data | 4 |
| 1.3 | Purpose | 5 |
| 1.4 | Scope | 6 |
| 1.5 | Management systems | 6 |
| 2 | Legislative Requirements | 6 |
| 2.1 | The project requirements | 6 |
| 2.2 | Statement of Commitments (SoC) | 8 |
| 2.3 | Aboriginal Heritage Conservation Strategy (AHCS) | 8 |
| 2.4 | Author of revised AACHMP | 8 |
| 2.5 | Consultation for this AACHMP | 8 |
| 3 | Consultation and communication | 8 |
| 4 | Risk management | 9 |
| 5 | Control measures | 9 |
| 5.1 | Overview of operation controls | 9 |
| 5.2 | Key operational control procedures | 12 |
| 6 | Monitoring program | 13 |
| 7 | Roles & responsibilities | 13 |
| 8 | Compliance obligations | 14 |
| 8.1 | Protocols for non-compliance notification | 14 |
| 8.2 | Incident notification | 15 |
| 8.3 | Complaint handling | 15 |
| 9 | Reporting and review | 15 |
| 9.1 | Reporting | 15 |
| 9.2 | AACHMP review | 16 |
| 9.3 | Independent Audit | 16 |
| 10 | References | 16 |
| | Version Control | 17 |
| | Figures: Aboriginal heritage sites and areas | 18 |
| | Appendix 1: Project approval 10_0138 | 2 |
| | Appendix 2: Registered Aboriginal Parties | 5 |
| | Appendix 3: Ongoing consultation with RAPs | 12 |
| | Appendix 4: Management of salvaged artefacts and sites | 13 |
| A-4.1 | Aboriginal archaeological salvage program | 13 |
| a) | RAP participation in fieldwork | 13 |
| b) | Surface collection | 14 |
| c) | Archaeological test and open area excavations | 15 |
| d) | Archaeological excavation – methodology | 16 |
| e) | Archaeological salvage signoff | 18 |
| f) | Post-salvage analysis | 18 |
| g) | Archaeological salvage program reporting | 18 |
| A-4.2 | Artefact curation and Aboriginal Keeping Place | 19 |
| A-4.3 | Cultural heritage training for the community | 19 |

| | |
|---|-----------|
| A-4.4 Management of grinding grooves | 19 |
| a) Located within areas of direct disturbance | 19 |
| b) Located outside areas of direct disturbance | 20 |
| A-4.5 Scarred tree removal | 20 |
| Appendix 5: Contingencies and protocols | 21 |
| A-5.1 Procedure for the discovery of human remains | 21 |
| A-5.2 Procedure for the discovery of Aboriginal archaeological objects | 21 |
| A-5.3 Independent review & AACHMP breach investigation | 22 |
| Appendix 6: Site salvage record form | 24 |

1 Introduction

1.1 Overview of approved operations

The Maules Creek Coal Mine (MCCM) is an open cut mining operation located approximately 20km north-east of Boggabri within the Narrabri Local Government Area, in New South Wales.

The mine is owned by a joint venture which is 75% owned by Aston Coal 2 Pty Limited (a company 100% owned by Whitehaven Coal), 15% owned by Itochu Coal Resources Australia Maules Creek Pty Ltd and 10% owned by J-Power Australia (hereto referred to as MCCJV). The Mine is operated by Maules Creek Coal Pty Ltd, a wholly owned subsidiary of Whitehaven Coal on behalf of MCCJV.

MCCM operates under Project Approval (PA) 10_0138 (granted 23 October 2012), inclusive of multiple modifications since this date. Further details on each modification can be found in the 'Definition' section of PA 10_0138.

A full project description, including baseline data, history of operations, current operating approach and mining methods are outlined within the MCCM Project Environmental Assessment and previous Annual Environmental Management Reports/Annual Reviews (AEMR/AR) for the site. These documents can be found on the Whitehaven Coal website.

MCCM has elected to separate the management of heritage sites, under condition 58, schedule 3, with a historic heritage management plan and this Aboriginal Archaeology and Cultural Heritage Management Plan (AACHMP).

1.2 Baseline data

An Aboriginal Archaeological and Cultural Heritage Impact Assessment was conducted by AECOM Australia Pty Ltd (AECOM, 2010) as part of the Maules Creek Coal Project EA (Hansen & Bailey, 2011a). The resulting study identified 75 Aboriginal archaeological and cultural heritage sites within, and in the vicinity of, the MCCM Project Boundary. Searches of relevant heritage registers for the MCCM Project Boundary (excluding the Boggabri Coal Mine managed boundary area) were undertaken as part of the revision of this AACHMP, including the Aboriginal Heritage Information Management System (AHIMS) database (Search IDs# 987974 and 987976, undertaken on 24 March 2025), NSW State Heritage Inventory, and the Australian Heritage Register. No entries for historic heritage sites were identified within the relevant registers. The results of the AHIMS search indicate that a total of 136 Aboriginal cultural heritage sites are located within the MCCM Project Boundary (including a 50m buffer from the project boundary), of which some have been salvaged (noted on AHIMS as 'destroyed'), and other have been updated to 'not a site' (following re-assessment of some scarred tree) and therefore not included in this AACHMP. The Project Boundary contains 39 extant Aboriginal cultural heritage sites (Figure 1), including:

- 6 partially salvaged sites; and
- 33 valid sites.

Summary descriptions of the 39 extant Aboriginal cultural heritage sites identified are in Table 1. Refer to Figure 1 for the map of the valid and extant heritage sites managed by this AACHMP.

Table 1 Aboriginal Heritage sites identified and protected within MCCM Project boundary

| Impact type | Site name | AHIMS ID | Site type | Scientific significance |
|--------------|----------------|-----------|-------------------|-------------------------|
| Not Impacted | Back Creek AS1 | 20-4-0395 | Artefact scatter | Moderate |
| | Back Creek AS2 | 20-4-0396 | Artefact scatter | Moderate |
| | Back Creek AS3 | 20-4-0397 | Artefact scatter | High |
| | Back Creek AS4 | 20-4-0398 | Artefact scatter | Low |
| | Back Creek AS5 | 20-4-0399 | Artefact scatter | Low |
| | Back Creek AS6 | 20-4-0400 | Artefact scatter | High |
| | Back Creek IA1 | 20-4-0401 | Isolated artefact | Low |

| Impact type | Site name | AHIMS ID | Site type | Scientific significance |
|--|--|--|--------------------------------------|-------------------------|
| | Back Creek IA2 | 20-4-0402 | Isolated artefact | Low |
| | BBS; Red Chief LALC; Daiseymead ST2 | 20-4-0075 | Scarred tree | Moderate |
| | PL 1/15 | 20-4-0577 | Isolated artefact | Low |
| | Teston GG3 | 20-4-0712 | Grinding grooves | Moderate |
| | | | | |
| | Teston IA9 | 16-4-0026 | Isolated artefact | Low |
| | Teston IA15 | 20-4-0524 | Isolated artefact | Low |
| | Therribri Road Report | 20-4-0575 | Aboriginal Resource and Gathering | Low |
| | TR-IF2 | 20-4-0581 | Isolated artefact | Low |
| | TR-ST1 | 20-4-0580 | Scarred tree | Moderate |
| | Velyama IA10 | 20-4-0888 | Isolated artefact | Low |
| | Willow Tree Range; Teston; Therribri (MC9) | 20-4-0022 | Isolated artefact | Low |
| | Velyama AS9 | 20-4-0830 | Artefact Scatter | Low |
| | Teston GG5 | 20-4-0995 | Grinding Grooves | Low |
| | Roma IA1 | 20-4-1107 | Isolated artefact | Low |
| | Back Creek AS21 | 20-4-1130 | Artefact Scatter | Low |
| | Brighton IA3 | 20-4-1181 | Isolated artefact | Low |
| | Back Creek AS8 | 20-4-0997 | Artefact Scatter | Low |
| MCCP Impact | Leard SF AS8 | 20-4-1094 | Artefact Scatter | Low |
| | Leard SF AS9 | 20-4-1095 | Artefact Scatter | Low |
| | Leard SF IA21 | 20-4-1125 | Isolated artefact | Low |
| | Leard SF IA22 | 20-4-1124 | Isolated artefact | Low |
| | Leard SF IA23 | 20-4-1137 | Isolated artefact | Low |
| | Leard SF IA24 | 20-4-1136 | Isolated artefact | Low |
| | Leard SF AS12 | 20-4-1126 | Artefact Scatter | Low |
| | Brighton AS3 | 20-4-1176 | Artefact Scatter | Low |
| | Brighton IA4 | 20-4-1180 | Isolated artefact | Low |
| Partial impact – rail spur | Velyama AS8 | 20-4-0499 | Artefact scatter | Moderate |
| | Willow Tree Range; Teston; Therribri (MC8) | 20-4-0021 | Artefact Scatter | Moderate |
| | Willow Tree Range; Teston; Therribri; (MC7) | 20-4-0020 | Artefact Scatter | Moderate |
| | | 20-4-0026 20-4-0027 20-4-0412 20-4-0413 | | |
| | Teston South Site Complex | 20-4-0413 | Artefact Scatter | High |
| | Velyama; Manila (MC11) | 20-4-0024 | Artefact Scatter | Low |
| Partial Impact – MCCM Infrastructure | Teston AS7 | 16-4-0017 | Artefact Scatter | Low |

1.3 Purpose

The purpose of this AACHMP is outline the systems, processes and documentation established to:

- ensure compliance with operating conditions of all active approvals; and

- avoid or minimise the impact of disturbance to aboriginal heritage places and objects from mining activity.

1.4 Scope

The scope of the AACHMP applies to all activities at MCCM including mining, handling, transport, and storage of coal that have the potential to impact aboriginal cultural heritage values in the immediate and surrounding receiving environment.

This document should be read in conjunction with other environmental management plans and operational documents (such as procedures). This AACHMP covers the entirety of the MCCM Project Boundary for the Mine but excludes the portion of the Project Approval Boundary managed by Boggabri Coal Operations Pty Limited (BCOPL) (see Figure 1).

1.5 Management systems

MCCM; as a Whitehaven operation, has well-established management systems. These management systems provide the framework to support the planning, implementation, monitoring, and review to achieve continual improvement in aboriginal heritage management. To minimise the disturbance to cultural heritage, a risk-based approach has been established, which includes mechanisms for archaeological pre-clearance surveys, monitoring, providing feedback on the effectiveness of controls, and enabling adaptive aboriginal heritage management.

2 Legislative Requirements

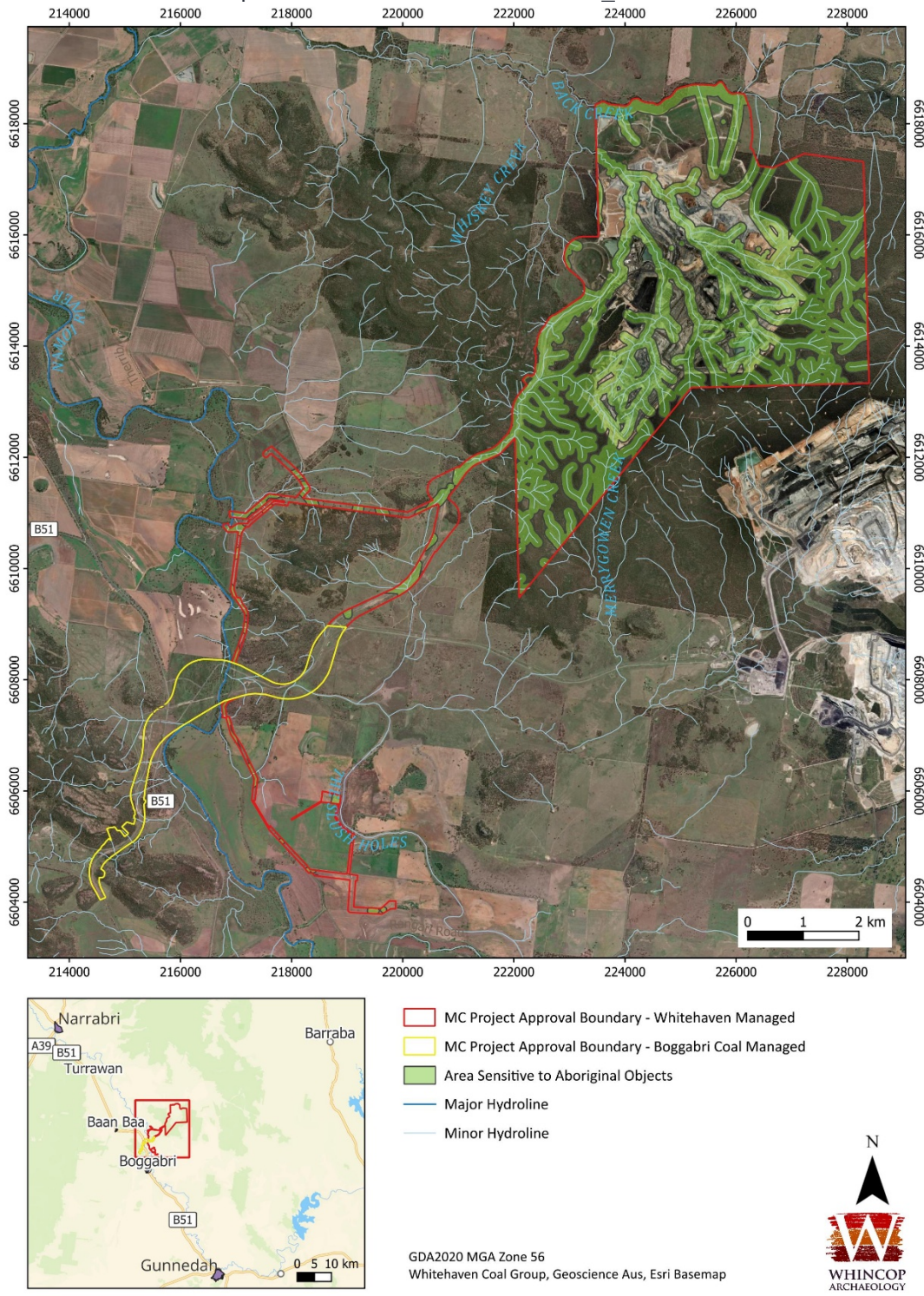
2.1 The project requirements

Requirements and commitments associated with disturbance to cultural heritage are defined in Maules Creek Coal Mine Project Approval PA 10_0138 (including modifications):

- a) schedule 3 conditions 23, 52, 57, and 58;
- b) schedule 4 condition 7;
- c) schedule 5 conditions 4 and 5; and
- d) Statement of Commitments (SoC), 18, 19, 20, and 21.

References, guidelines and additional legislation relevant to the preparation this AACHMP and the management of disturbance to historic heritage places and objects from MCCM are available in section 10.

This AACHMP has been developed in accordance with the PA 10_0138 and other relevant conditions, as



provided

Figure 2 – Cultural heritage sensitive areas

Appendix 1: Project approval 10_0138.

It should be noted that condition 58 of PA 10_0138 concerns both Aboriginal heritage and non-Aboriginal heritage, and that it describes both aspects as being contained in a ‘Heritage Management Plan’ (Whitehaven Coal, 2025). MCCM has elected to separate the two heritage components: with this AACHMP outlining the aboriginal cultural management (condition 58a to 58d). Historic heritage (condition 58e) is addressed in WHC-PLN-MC-Historic Heritage Management Plan (Whitehaven Coal, 2025).

2.2 Statement of Commitments (SoC)

Appendix 5 of PA 10_0138 provides a consolidated Statement of Commitments (SoC), which summarises the key management and mitigation measures for the MCCM as documented in the Maules Creek Coal Project Environmental Assessment (EA) (Hansen & Bailey, 2011a), the Response to Submissions (Hansen Bailey, 2011b) and the Response to Subsidiary Submissions (Hansen Bailey, 2012). The undertakings made in the SoC that pertain to aboriginal heritage are listed in Table 6.

2.3 Aboriginal Heritage Conservation Strategy (AHCS)

The Aboriginal Heritage Conservation Strategy was submitted to the Department of Planning & Environment (DP&E) in September 2014 and was approved in November 2017 (UQ Cultural & Heritage Unit, 2017). Although it considers the Aboriginal heritage values of the Boggabri, Tarrawonga and Maules Creek Coal Mines, as well as their associated Biodiversity Offset properties, the AHCS defers the management of all Aboriginal cultural heritage sites within the MCCM Project Boundary to measures outlined within the approved AACHMP. "Therefore, no further management measures, enhancement or conservation options are proposed for these [mines] as part of the AHCS" (AHCS section 7.1, p. 44).

2.4 Author of revised AACHMP

This revised AACHMP has been prepared by Symmetry HSE, in consultation with DPHI and relevant stakeholders, then reviewed and updated by a suitably qualified and experienced professional. The revised AACHMP has been reviewed by Dr Matthew Whincop from Whincop Archaeology Pty Ltd (Director). Dr Whincop is a qualified archaeologist with more than two decades of experience in archaeological research and consultancy. Dr Whincop has authored numerous Cultural Heritage Assessments, Cultural Heritage Management Plans, Heritage Impact Assessments and Due Diligence Assessments in the Boggabri region.

2.5 Consultation for this AACHMP

In accordance with Condition 58(b) of Schedule 3 of PA 10_0138, the original AACHMP was provided to Biodiversity Conservation Division (BCD), North West Local Land Service (NWLLS) and the Registered Aboriginal Parties (RAPs) for review and comment. Comments received within the specified time period were considered prior to finalisation and lodgement with the Secretary of Department of Primary Industries and the Environment (DPIE) for approval. Subsequent revisions, including this revision of the AACHMP also sought consultations from BCD, NWLLS, and relevant RAPs.

3 Consultation and communication

This AACHMP has been prepared in consultation with the Department of Planning and Environment (DPHI). In addition, MCCM has extensive consultation and communication processes, including but not limited to:

- A comprehensive community engagement program which includes a Community Consultative Committee (CCC);
 - The CCC includes one member from the Aboriginal RAP groups.
 - The nominated RAP will be responsible for raising concerns identified by the RAPs for general discussions at these meetings.
- Periodic engagement with the Registered Aboriginal Parties (RAPs). A list of all identified RAPs is provided in appendix 2. For this AACHMP and ongoing site works, MCCM will consult directly with the RAPs, who may consult with the wider Aboriginal community concerning cultural heritage management matters related to the project;
- Ongoing consultation with relevant government agencies including DPHI¹ and relevant local councils;
- A community response line (1800 942 836) which enables members of the community to contact environment and community staff directly to discuss cultural heritage concerns; and,

¹ DPHI was formally known as the Department of Planning, Infrastructure and the Environment (or DPIE).
Maules Creek Coal Aboriginal Cultural Heritage Management Plan

- Publicly available project approvals, environmental and other related documentation (annual reports, complaints register, CCC minutes) via the [Whitehaven Coal website](#).

4 Risk management

The MCCM implements a comprehensive risk management system as documented in the Whitehaven Coal HSE Risk Management Standard (WHC-STD-HSE Risk Management) and the Whitehaven Coal HSE Risk Management Procedure (WHC-PRO-HSE Risk Management). Disturbance of cultural heritage and associated control measures are documented in the MCCM Broadbrush Risk Assessment; the control measures are summarised in section 5 of this AACHMP. Operational and project related changes that have the potential to materially disturb cultural heritage are managed through the Whitehaven Coal Management of Change Standard (WHC-STD-Management of Change).

5 Control measures

5.1 Overview of operation controls

The Project Approval requires the MCCM to implement reasonable and foreseeable avoidance and mitigation measures' regarding disturbance to Indigenous and non-Indigenous heritage. Key operational control measures are included in Table 2.

Table 2 MCCM Control measures

| Risk | Source | Mitigation Measures | Timing |
|--|---|--|---------|
| Loss of aboriginal cultural history and values | Areas disturbed by mining activities | Aboriginal site database covering the name, type, extent, MGA coordinates and status of all Aboriginal archaeological and cultural heritage sites within the MCCM project approval boundary. This database is used by staff and contractors to identify known sites and to manage impacts applying the hierarchy of control ² when considering any disturbance works If unrecorded Aboriginal heritage evidence is identified at the MCCM the Database will be updated | Ongoing |
| | Areas locked out due to mining activities | MCCM will facilitate reasonable access consistent with work health and safety requirement for Aboriginal community members wishing to access the MCCM Project Approval Boundary. Aboriginal community members wishing to gain access should contact the Environment Superintendent in writing. Access may not be granted under all instances and access may be rejected based on operational or safety considerations. No unauthorised access to MCCM is permitted. | Ongoing |
| Loss of aboriginal medicinal trees | Areas disturbed by mining activities | Geolocating the extant quinine bushes (<i>Alstonia constricta</i>) within the MCCM mining footprint in the GPS and including it in the vegetation and cultural mapping layers. Plant and seed collection and propagation program to replace those plants impacted as a result of mining activities. | Ongoing |
| Loss of aboriginal scientific and cultural values | Areas disturbed by mining activities | Salvage program is detailed in aAppendix 4: Management of salvaged artefacts and sites | Ongoing |

² The hierarchy of controls refers to a decision-making process when determining what actions will be taken to avoid or mitigate any impacts. The hierarchy ranks controls by elimination, substitution, engineering, administration and PPE.

| Risk | Source | Mitigation Measures | Timing |
|---|--|---|---------|
| Unintended damage to known sites and unknown sites | Areas disturbed by mining activities | <p>Aboriginal heritage induction for all staff and contractors. Covers:</p> <ul style="list-style-type: none"> • site types present; • protocols (including controls) and responsibilities regarding Aboriginal cultural heritage for the MCCM; and • procedures for reporting new sites. <p>Records are kept of all inductions</p> <p>Mandatory cultural awareness training to all staff whose roles are likely to encounter sites or consult with RAPs</p> | Ongoing |
| Damage to grinding grooves and rock shelters | Mining activities particularly blasting (vibration, air blast and flyrock) | <ul style="list-style-type: none"> • Any grinding groove site and rock shelters that are located within 500 metres of proposed blasting will be subject to blast monitoring. The acceptable level of blasting-related vibration will be determined by an appropriately qualified expert (e.g. geotechnical engineer) in liaison with the approved archaeologist • Blasting must be carried out in accordance with WHC-PLN-MC-Blast Management Plan (refer to section 5.2.4). • Routine visual inspections of grinding grooves (including but not limited to Teston GG3³ and Teston GG5⁴) and rock shelters will be undertaken during the annual monitoring program to confirm that they have not been impacted by blasting activities, or from relocation in the case of Teston GG4 • Aboriginal heritage site/artefact protective fencing and signage and annual fencing audit <p>If the grinding groove is damaged an incident is raised as per section 8.2 and Appendix AA-5.1A-5.3 process is followed.</p> | Ongoing |
| Disturbance to newly discovered sites or human remains | Areas disturbed by mining activity | Cease work immediately and follow procedures outlined in A-5.1, A-5.2 and Appendix 6: Site salvage record form | Ongoing |
| Damage to known sites | Areas disturbed by mining activity | <ul style="list-style-type: none"> • Sites within the MCCM Project Approval Boundary (including those outside the disturbance boundary) have been fenced and signposted • Fencing standard comprises (as a minimum) star pickets and a single galvanised wire. • Sign standard is metal and include the following words as a minimum: ENVIRONMENTALLY SENSITIVE AREA, NO UNAUTHORISED ENTRY, CONTACT ENVIRONMENTAL DEPARTMENT • Any sites identified prior to disturbance will either be salvaged or fenced (and potentially, later salvaged) determined on a basis of risk. As a minimum standard, any activities within 50m of an Aboriginal archaeological site must be fenced or salvaged. • Where new sites are identified they will also be fenced, and signage installed as per the standard. The fencing will adhere to the Procedure on the Discovery of Aboriginal Archaeological Objects (refer to appendices A-5.1 and A-5.2). | |

³ Teston GG3 is located more than 500m from open cut operations and is therefore unlikely to experience potential impacts from blasting.

⁴ Teston GG4 has been relocated from its original position.

| Risk | Source | Mitigation Measures | Timing |
|------|--------|--|--------|
| | | <ul style="list-style-type: none"> • Fences will be removed following completion of salvage at particular sites or during decommissioning at the completion of mining. • Existing access tracks within archaeological site boundaries are to be maintained. Traffic and/or upgrading of roads will be managed or limited within these areas to reduce additional impacts to sites. • Inspection <ul style="list-style-type: none"> ○ Fencing <ul style="list-style-type: none"> ▪ Inspected annually to ensure they are in place and to standard. As a minimum the inspections will check all sites listed in Table 1. ▪ It will confirm: the condition of the archaeological site; the condition of the fencing; and evidence of nearby disturbance that has the potential to impact the fenced site. ▪ If not to standard the sites would be re-assessed by a qualified archaeologist and RAPs. ▪ A report will be prepared following completion of the fencing audit, and the findings will be presented in the Annual Review. ▪ Fencing will also be inspected opportunistically by MCCM staff and RAPs during day to day activities across the MCCM. ○ Cultural heritage sensitive areas⁵ (Figure 2) <ul style="list-style-type: none"> ▪ Inspections will be undertaken on foot prior to disturbance by the attending qualified archaeologist and RAP representatives. ▪ Heritage objects will be recorded and collected. ▪ Where required, mitigation measures will be implemented. ▪ Where an unusual, significant or rare site type is identified the archaeologist and RAP will determine the appropriate mitigation measure (which may include shovel test pits, salvage excavation, and/or scientific analysis). ○ Weed and feral animal <ul style="list-style-type: none"> ▪ Weed and feral animal control measures within the Approval Boundary will avoid impacts to Aboriginal heritage sites. ▪ If weed and feral animal control are required within cultural heritage sensitive areas prior to any work the location will be inspected on foot, any cultural heritage objects will be recorded and collected, and controls developed and implemented. ▪ If an unusual, significant or rare site type is identified the archaeologist and RAPs will determine the most appropriate mitigation together (such as test pits, salvage excavation and/or scientific analyses). | |

⁵ Cultural heritage sensitive areas for the MCCM have been defined as those areas within the MCCM Project Approval Boundary and within 50 metres (m) of registered recorded known sites and/or land within 200 m of named creeks and 100 m either side of other mapped drainage lines
Maules Creek Coal Aboriginal Cultural Heritage Management Plan

| Risk | Source | Mitigation Measures | Timing |
|---|---|---|---------|
| | | <ul style="list-style-type: none"> ○ Reporting <ul style="list-style-type: none"> ▪ The results of these inspections are reported in the Annual Review and presented at the next RAP meeting. • Emergency works <ul style="list-style-type: none"> ○ During an emergency where vegetation needs to be cleared (e.g. firefighting, hazardous materials spill) near protected Aboriginal heritage sites clearance will be undertaken with minimum possible disturbance to topsoil | |
| Damage/ Loss of scarred trees | Areas disturbed by mining activity including offset areas | <ul style="list-style-type: none"> • A sign will be erected in the vicinity of each scarred tree (although not directly adjacent to it) that states that the area is environmentally sensitive and that damage to flora is prohibited • The condition of the scarred trees will be monitored on a routine basis (at least annually) • If a tree is identified that could be of possible Aboriginal origin within the Project Approval Boundary that requires further assessment, temporary fencing may be required to ensure that it is not damaged until the assessment is complete | |
| Loss of aboriginal cultural history and values | Areas disturbed by mining activity including offset areas | Implementation of the Biodiversity Conservation Strategy which includes identification and long term protection measures of any aboriginal cultural heritage values | Ongoing |
| Reputational damage from disturbing cultural heritage | Areas disturbed by mining activity (surface disturbance) | Consultation with RAPs as per Appendix 3: Ongoing consultation with RAPs | Ongoing |
| Damage or disturbance of unknown or newly discovered/exposed cultural heritage sites | Mining activities in new areas | <p>Before proposed work implement Land Disturbance Permit Protocols (WHC-PRO-OC-MCC-Land Disturbance Protocol) and risk controls to known and potential sites (including salvage). Works will not commence until all measures are in place and the LDP is approved by the Environmental Superintendent</p> <p>If an unknown cultural heritage item is exposed all works will cease immediately in the area to prevent any further impacts to the site/relics.</p> | Ongoing |

5.2 Key operational control procedures

5.2.1 WHC-PLN-MCC-Biodiversity Management Plan

This plan includes a commitment to manage Aboriginal heritage, within MCCM boundaries and the Biodiversity Offset areas from mining and biodiversity management activities. The BMP requires that all personnel conducting pre-clearing inspections be inducted which covers identification of potential cultural heritage objects (particularly culturally modified trees) and that any potential heritage finds are recorded, included in the Whitehaven cultural heritage database, added to the Whitehaven spatial database, and registered on the AHIMS. It includes management of conflict between proposed restoration works and aboriginal heritage values.

5.2.2 WHC_PRO_OC_MCC_Land Disturbance Protocol

This protocol includes a process for ensuring that clearing work is carried out in accordance with MCCM's conditions and commitments (including cultural heritage). It allows personnel to ascertain what internal approvals are required for the planned land disturbance activity and ensures administrative cultural heritage controls are applicable. Finally, this protocol lists all the related protocols, forms and checklists that may be relevant to a land disturbance activity, including an Aboriginal and Cultural Heritage form.

5.2.3 WHC-PLN-MCC-Historic Heritage Management Plan

The plan outlines the management and monitoring of non-indigenous heritage items within and within the vicinity of the MCCM boundaries. It includes management measures for the salvage and removal of non-aboriginal heritage items and the management of sites left in situ. Mechanisms to respond to aboriginal heritage issues and related complaints are mentioned.

5.2.4 WHC_PLN_MCC_Blast Management Plan

This plan specifies that the blast design includes the protection of Aboriginal and Historical Heritage items using identification, ground vibration modelling, flyrock impacts, and visual monitoring. Note, blasting and associated vibration is only considered to hold potential to impact Aboriginal heritage with an inherent structural element, such as grinding grooves and rock shelters. Stone artefact sites (e.g. isolated artefacts, artefact scatters) and trees are generally not at risk from blasting activities.

6 Monitoring program

As per section 5.1, protective fencing and signage at all heritage sites are audited each year to ensure that their condition is maintained. Section 5.1 provides further detail on the annual fencing inspection.

In addition, RAPs are required to carry out inspections of works areas prior to disturbance (refer to section 5.1).

Additional monitoring and inspection of *cultural heritage sensitive areas* identified through landform analysis – within 50 metres (m) of known sites and/or land within 200 m of named creeks and 100 m either side of other mapped drainage lines – will follow surface inspection guides described in Section 5.1.

The grinding grooves are to be subject to:

- blast monitoring when blasts occur within 500 meters of the grinding grooves (refer to the WHC_PLN_MCC_Blast Management Plan (Whitehaven, 2022)); and
- Visual inspections during annual monitoring (section 5.1).

7 Roles & responsibilities

Table 3 Roles and Responsibilities

| Role | Responsibility |
|---|---|
| Operations Manager | <ul style="list-style-type: none">• Ensure personnel are aware of their obligations under this AACHMP and provide support to the site Environmental Superintendent in implementing the requirements of the AACHMP• Follow relevant procedures in relation to site salvage and identification of artefacts during operational activities• Report any incidents to the Environmental Superintendent or delegate for immediate action and resolution |
| Open Cut Operations and Statutory Open Cut Examiner (OCE) | <ul style="list-style-type: none">• Understand the requirements of the AACHMP• Implement operational controls listed in Table 2 |
| HSE Manager (or Equivalent) | <ul style="list-style-type: none">• Maintenance and update of this plan and monitoring program |

| Role | Responsibility |
|-------------------------------------|---|
| Environmental Superintendent | <ul style="list-style-type: none"> • Authorise the AACHMP and any reviews/updates • Ensure inductions and training are relevant to the requirements of this AACHMP • Consult with relevant agencies and stakeholders on the development and implementation of the AACHMP • Report any incidents to the relevant agencies • Updating Aboriginal sites database |
| Environmental Officer | <ul style="list-style-type: none"> • Undertake on-ground implementation of this AACHMP • Coordinate activities in this plan with operational personnel and the RAPs • Coordinate archaeologists and arborists in the active completion of works required in this plan • Provide operations with relevant advice and information pertinent to management of cultural heritage issues, including provision of toolbox talks on heritage matters • Undertake review of site disturbance requirements and coordinate site disturbance approval processes, including review of known heritage sites against areas proposed for disturbance • Provide input to the AR in relation to performance against the requirements of the AACHMP and any developments relating to heritage management during the review period • Coordinate RAPs for site monitoring purposes • Respond to any events impacting on cultural heritage in accordance with the procedures in this management plan |
| RAPs | <ul style="list-style-type: none"> • Participate in fieldwork as needed (ensuring relevant insurances and Fitness for Work are met) • Contribute cultural perspective on newly identified Aboriginal objects • Attend annual RAP consultation meetings |
| Archaeologist | <ul style="list-style-type: none"> • Undertake archaeological inspection of proposed works areas • Oversee all archaeological salvage activities • Prepare relevant reporting regarding the results of fieldwork • Undertake annual fencing audit |
| All employees | <ul style="list-style-type: none"> • All employees at MCCM share the responsibility of maintaining the Licence to Operate which includes the management of disturbance to cultural heritage and are referenced where applicable in operational control documentation. |

8 Compliance obligations

8.1 Protocols for non-compliance notification

A written report on a non-compliance with required contents will be provided to the DPHI via the major projects website within 7 days of becoming aware of the non-compliance (or as otherwise directed by the DPHI) as per Schedule 5 Condition 8 PA 10_0138. Appendix 5 includes details on responding to unplanned discovery or damage to cultural heritage items.

8.2 Incident notification

In accordance with Schedule 5 Condition 8A – 8C PA 10_0138, and under section 148 of the Protection of the Environment Operations Act 1997 (POEO Act) the Secretary of DPHI and representatives of all relevant regulatory agencies will be informed of any incident that;

- has caused, or threatens to cause, material harm to the environment; and
- breaches or exceeds the limits or performance measures/criteria in this approval.

A notification will be provided to the DPHI immediately after becoming aware of an incident via the major project's website. A written report on the incident will be provided to the DPHI via the major project's website within 7 days and a detailed report with 30 days of becoming aware of the incident (or as otherwise directed by the DPHI) as per the requirements of PA 10_0138. Reporting to additional regulatory authorities will be executed to meet legal obligations.

8.3 Complaint handling

Whilst all endeavours will be made by MCCM to avoid adverse disturbance to cultural heritage, it is acknowledged that impacts may occur. To ensure an appropriate and consistent level of reporting, response and follow-up to any complaints is adopted by MCCM, the following complaints management protocol will be followed:

- a publicly advertised telephone complaints line will be in place to receive complaints;
- initial response is provided where practical within 24 hours of receipt of a complaint;
- an investigation will be initiated as per for a non-compliance or incident (sections 8.1 and 8.2); and
- all details regarding the complaint including investigation outcomes and follow up actions will be documented in a complaints register.

A detailed AACHMP breach and review process is detailed in Appendix AA-5.1A-5.3.

A copy of the Complaints Register will be made available to the CCC and updated monthly on the MCCM website. A summary of complaints received every 12 months will be included in the Annual Review.

9 Reporting and review

9.1 Reporting

9.1.1 Compliance reporting

An overview of any non-compliances or incidents received during the reporting year are included in MCCM's annual review. Refer to section 9.1.3 for further detail on the annual review.

All Aboriginal heritage management and mitigation works carried out under the AACHMP for the MCCM will be documented to a standard comparable to that required by the *Code of Practice for Archaeological Investigation of Aboriginal Objects in New South Wales* (NSW Department of Environment Climate Change & Water, 2010). Summaries of technical archaeological salvage reports will also be prepared. Printed and/or digital copies of all archaeological salvage reports (plain English and technical) are to be made available to RAPs upon request and copies will be provided to Heritage NSW when available.

9.1.2 CCC reporting

A Community Consultative Committee (CCC) has been established and will continue to be operated for the duration of operations on site. Regular briefings to the CCC will be provided, including a summary of the status of in situ cultural heritage sites.

9.1.3 Annual Review

By the end of March each year, MCCM will review the cultural heritage performance for the previous calendar year. The Cultural Heritage component of the Annual Review includes the required detail as per the DPHI Annual Review Guideline (NSW Department of Planning & Environment, 2015). The Annual Review will be sent to the relevant regulatory agencies for review and made publicly available on the WHC website.

9.2 AACHMP review

A review of the AACHMP may be conducted within three months of:

- submission of the Annual Review (schedule 5, Conditions 4 and 5 of PA 10_0138);
- the filing of an incident report (schedule 5, condition 8 of PA 10_0138);
- the undertaking of an Independent Environmental Audit (schedule 5, condition 10 of PA 10_0138);
- any modification to PA 10_0138; or
- at any time when, in the view of MCCM, it is necessary or convenient to review the AACHMP for the effective administration of Aboriginal cultural heritage matters connected with MCCM.

If the AACHMP is to be revised because of a review (and where the changes proposed are material in nature), copies of the document are to be sent to the RAPs for comment for a 28-day review period prior to finalisation.

Subject to agreement by DPHI, MCCM may submit a revised AACHMP for approval without undertaking consultation, in instances where the changes proposed to the AACHMP are not material in nature.

Following review and revision of the AACHMP, the resulting revised AACHMP will be submitted to the DPHI for approval by the Secretary.

9.3 Independent Audit

In accordance with schedule 5 condition 10 PA 10_0138 an Independent Environmental Audit (IEA) of the MCCM initially undertaken in 2014 and additional IEAs have been and will continue to be undertaken every 3 years. The IEA includes a review of the cultural heritage disturbance of the MCCM, assess compliance with the requirements in this plan, and implementation of management measures for the potential disturbance to cultural heritage.

10 References

- AECOM. (2010). *Maules Creek Coal Project Aboriginal Archaeology and Cultural Heritage Impact Assessment*.
- DPE. (2012). *Approval 10_0138 23 October 2012 (modified December 2019)*.
- Hansen & Bailey. (2011a). *Maules Creek Coal Project Environmental Assessment*.
- Hansen Bailey. (2011b). *Maules Creek Coal Project Environmental Assessment Response to Submissions*.
- Hansen Bailey. (2012). *Maules Creek Coal Project Response to Subsidiary Submissions*.
- ISO. (2015). *ISO 14001:2015 Environmental management systems*.
- NSW Department of Environment Climate Change & Water. (2010). *Code of Practice for Archaeological Investigation of Aboriginal Objects in New South Wales*.
- NSW Department of Planning & Environment. (2015). *Annual Review Guidelines*.
- NSW National Parks and Wildlife Service. (2002). *Aboriginal Cultural Heritage Assessment: NSW Western. Report prepared for Resource & Conservation Assessment Council*.
- Smith, B. &. (2004). *The Archaeologist's Field Handbook*.

UQ Cultural & Heritage Unit. (2017). *Aboriginal Heritage Conservation Strategy: Maules Creek Coal Mine, Tarrawonga Coal Project, Boggabri Coal Mine, and Related Biodiversity Offset Areas*. Brisbane: University of Queensland. Retrieved from <https://whitehavencoal.com.au/Documentations/Tarrawonga%20Mine/Environmental%20Management,%20Monitoring%20&%20Compliance/Environmental%20Management%20Plans,%20Strategies%20and%20Programs/BTM%20Aboriginal%20Heritage%20Conservation%20Strategy.pdf>

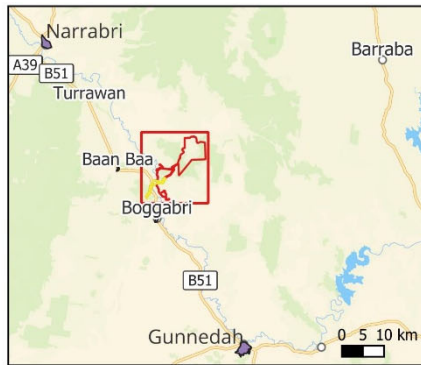
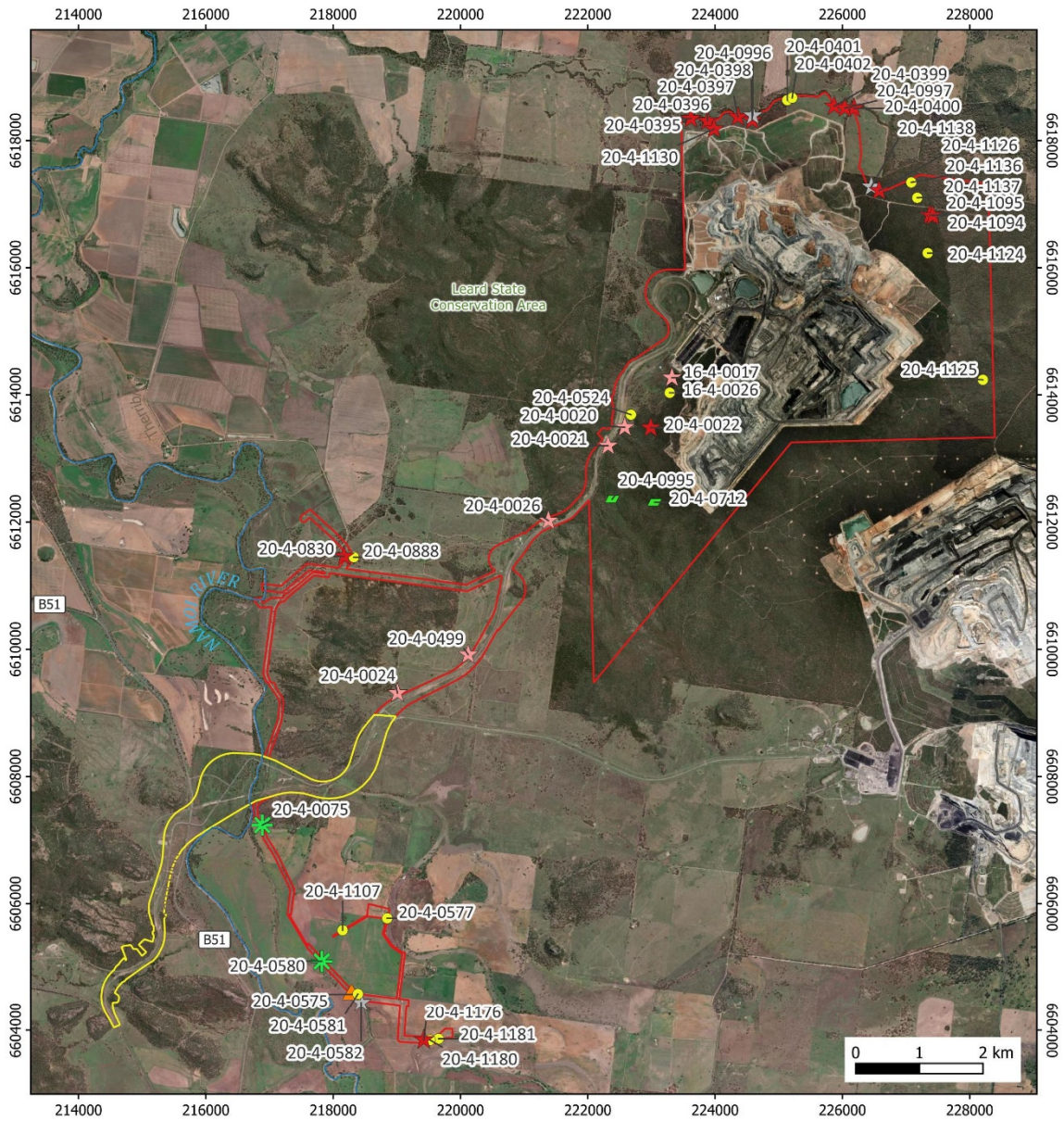
Whitehaven. (2022). *Maules Creek Blast Management Plan (WHC_PLN_MC_ BLAST MANAGEMENT PLAN)*.

Whitehaven Coal. (2022). *Maules Creek Mine Historic Heritage Management Plan*.

Version Control

| Revision | Description | Author | Authorised by | Date |
|----------|--|-----------------------------------|---------------|-------------|
| 2.1 | Revised draft | UQCHU | Brian Cole | Dec 2014 |
| 2.2 | Revision to incorporate RAP comments | UQCHU | Brian Cole | May 2015 |
| 2.3 | Revision to incorporate DP&E comments | UQCHU | Brian Cole | Aug 2015 |
| 2.4 | Revised draft | Whincop Archaeology | -- | Sep 2016 |
| 3.1 | Revision to incorporate section 6.4.2 | Whincop Archaeology | MCCM | Nov 2020 |
| 3.2 | Final revision for submission to Secretary | Whincop Archaeology | MCCM | August 2022 |
| 3.3 | Final revision for submission to Secretary | Whincop Archaeology | MCCM | Aug 2024 |
| 4.1 | Migrate into new template | Symmetry HSE & Matthew Whincop | MCCM | May 2025 |

Figures: Aboriginal heritage sites and areas



- ★ Artefact Scatter
- ★ Partially Destroyed Artefact Scatter
- Isolated Artefact
- Grinding Groove
- ★ Scarred Tree
- ▲ Aboriginal Resource & Gathering
- ★ Site Managed by Other WH Dept
- MC Project Approval Boundary - Whitehaven Managed
- MC Project Approval Boundary - Boggabri Coal Managed
- Major Hydroline

GDA2020 MGA Zone 56
 Whitehaven Coal Group, Geoscience Aus, NSW OEH, Esri Basemap



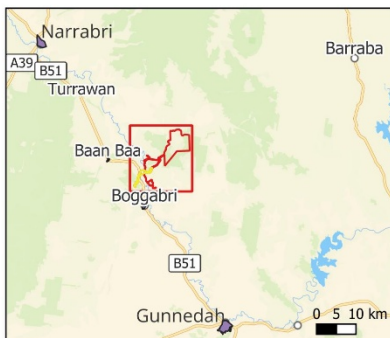
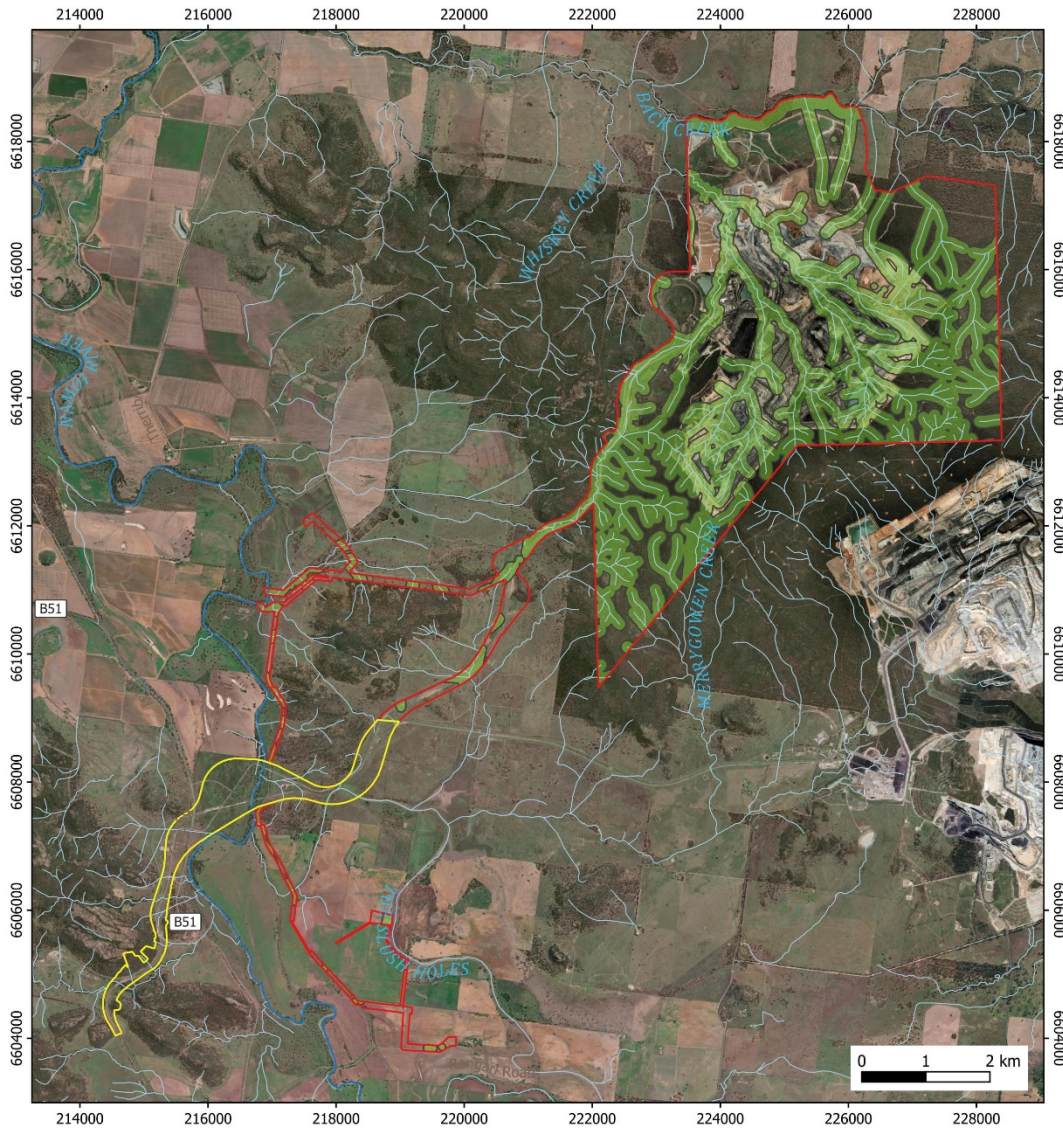
Figure 1 – Sites managed under ACCHMP



MAULES CREEK

| | |
|---------------------|-------------|
| Document Owner: | MCC |
| Revision Period: | As required |
| Issue: | 2 |
| Last Revision Date: | May 2024 |
| Date Printed: | May 2024 |

WHC_PLN_MC_ABORIGINAL ARCHAEOLOGY AND CULTURAL HERITAGE MANAGEMENT PLAN



- MC Project Approval Boundary - Whitehaven Managed
- MC Project Approval Boundary - Boggabri Coal Managed
- Area Sensitive to Aboriginal Objects
- Major Hydroline
- Minor Hydroline

GDA2020 MGA Zone 56
 Whitehaven Coal Group, Geoscience Aus, Esri Basemap



Figure 2 – Cultural heritage sensitive areas

Appendix 1: Project approval 10_0138

Table 4 – Relevant PA 10_0138 schedule 3 conditions

| Condition No. | Requirement | Relevant AACHMP Section |
|---------------|---|---|
| 58 | The Applicant must prepare and implement a Heritage Management Plan for the project to the satisfaction of the Planning Secretary. This plan must: | |
| (a) | Be prepared by suitably qualified and experienced person/s whose appointment has been endorsed by the Planning Secretary; | 2.4 |
| (b) | Be prepared in consultation with the BCS, North West LLS and the local Aboriginal stakeholders (in relation to the management of Aboriginal heritage values); | 2.5 |
| (c) | Be submitted to the Planning Secretary for approval prior to any development that may impact heritage items, unless the Planning Secretary agrees otherwise; | 2.5 |
| (d) | Include the following for the management of Aboriginal heritage | - |
| | <ul style="list-style-type: none"> a detailed plan for the implementation of the approved Aboriginal Heritage Conservation Strategy; | 2.3 |
| | <ul style="list-style-type: none"> a detailed archaeological salvage program for Aboriginal sites/objects within the approved disturbance area, including methodology and procedures/protocols for: <ul style="list-style-type: none"> sub-surface testing; staged salvage, based on anticipated mine planning; if relevant, historic heritage salvage at the Lawler's Waterhole site; pre-disturbance monitoring; site assessment and reporting; research objectives to inform knowledge of Aboriginal occupation; protection, storage and management of salvaged Aboriginal objects; addressing relevant statutory requirements under the National Parks and Wildlife Act 1974; and long term protection of salvaged Aboriginal objects; | 5.1, Appendix 4: Management of salvaged artefacts and sites |
| | <ul style="list-style-type: none"> a description of the measures that would be implemented for: <ul style="list-style-type: none"> Protecting, monitoring and managing Aboriginal sites on the site which are outside of the approved disturbance area; Maintaining and managing reasonable access for Aboriginal stakeholders to heritage items on the site and within the Biodiversity Offset Strategy areas; Managing the discovery of any human remains or previously unidentified Aboriginal objects on site, including (in the case of human remains) stop work provisions and notification protocols; Ongoing consultation of the local Aboriginal stakeholders in the conservation and management of Aboriginal cultural heritage both on-site and within any Aboriginal heritage conservation areas; Ensuring any workers on site receive suitable heritage inductions prior to carrying out any activities which may disturb Aboriginal sites, and that suitable records are kept of these inductions; | 5.1 |
| | <ul style="list-style-type: none"> A strategy for the storage and management of any heritage items salvaged on site, both during the project and long term; | Appendix 4: Management of salvaged artefacts and sites |
| e) | Include the following for the management of historic heritage: | |
| | <ul style="list-style-type: none"> A detailed plan of management measures for maintaining or enhancing the heritage values of heritage items on project-related land which are outside of the approved disturbance area; | # |
| | <ul style="list-style-type: none"> A description of the measures that would be implemented for: <ul style="list-style-type: none"> Managing the discovery of human remains or previously unidentified heritage items on site; and Ensuring workers on site receive suitable heritage inductions prior to carrying out any development on site, and that suitable records are kept of these inductions. | Appendix A-5.1 and A-5.2 5.1 |

| | |
|--------------|---|
| Note: | The Department acknowledges that the initial Heritage Management Plan may not include a detailed plan for the implementation of the Aboriginal Heritage Conservation Strategy. If this occurs, the Applicant will be required to update the plan as soon as practicable following the Planning Secretary's approval of the Aboriginal Heritage Conservation Strategy. |
|--------------|---|

BCD – Biodiversity Conservation Division.

Historic heritage (i.e. non-Aboriginal) aspects are not covered in this AACHMP. Refer to the separate MCCM Historic Heritage Management Plan for details.

Table 5 – Other relevant conditions

| Condition No. | Requirement | Relevant AACHMP Section |
|-------------------------|--|---|
| Schedule 4, condition 7 | <p>Biodiversity and Heritage</p> <p>If a person has good reason to believe the Applicant is not implementing the biodiversity and/or heritage conditions in schedule 3 satisfactorily, then he/she may ask the Planning Secretary in writing for an independent review of the matter.</p> <p>If the Planning Secretary is satisfied that an independent review is warranted, then within 2 months of the Planning Secretary's decision, the Applicant must:</p> <p>a) commission a suitably qualified, experienced, and independent person, whose appointment has been approved by the Planning Secretary, to:</p> <ul style="list-style-type: none"> • consult with the person and/or any relevant agencies; • investigate the person's complaints/claims; • review the environmental performance of the Applicant; • determine whether the Applicant's performance is satisfactory or not; and if necessary • recommend measures to improve the Applicant's performance; and <p>b) give the Planning Secretary and complainant a copy of the independent review.</p> | Appendix A-5.3 |
| 23 | <p>Operating Conditions</p> <p>During mining operations on site, the Proponent shall:</p> <p>a) Implement best management practices to:</p> <ul style="list-style-type: none"> • minimise blasting impacts on heritage items in the vicinity of the site. | 5.1 |
| 52 | <p>Biodiversity Management Plan</p> <p>The Applicant must prepare and implement a Biodiversity Management Plan for the project to the satisfaction of the Planning Secretary. This plan must:</p> <ul style="list-style-type: none"> • include a detailed description of the measures that would be implemented including the procedures to be implemented for: <ul style="list-style-type: none"> • maximising the salvage of resources within the approved disturbance area – including vegetative, top and sub-soils and cultural heritage resources – for beneficial reuse in the enhancement of the biodiversity areas or rehabilitation area; and • managing any potential conflicts between the proposed restoration works in the biodiversity areas and any Aboriginal heritage values (both cultural and archaeological). | WHC-PLN-MC-Biodiversity Management Plan |
| 57 | <p>Aboriginal Heritage Conservation Strategy</p> <p>The Applicant must prepare and implement an Aboriginal Heritage Conservation Strategy for the project and the Biodiversity Offset Strategy areas to the satisfaction of the Planning Secretary. This Strategy must enhance and conserve the Aboriginal cultural heritage values (both cultural and archaeological) and provide for their long-term protection and management. The Strategy must:</p> <p>a) be prepared by suitably qualified and experienced person/s whose appointment has been endorsed by the Planning Secretary;</p> <p>b) be prepared in consultation with BCD, the local Aboriginal community and other mines within the Leard Forest Mining Precinct, and submitted to the Planning Secretary for approval within 18 months from the date of project approval;</p> | 2.3 |

| | | |
|--|--|--|
| | <ul style="list-style-type: none"> c) identify the Aboriginal cultural heritage values of the Biodiversity Offset Strategy areas; d) identify areas of high Aboriginal cultural heritage significance within both the site and the Leard Forest Mining Precinct; e) identify a range of options for enhancing and conserving Aboriginal cultural heritage values, with specific consideration of the potential for the long-term protection and management of significant sites within either the site, the Biodiversity Offset Strategy areas or other lands within the Leard Forest Mining Precinct identified as having high cultural heritage significance to the Aboriginal community; and f) consider cumulative impacts and potential for developing joint initiatives with other mines within the Leard Forest Mining Precinct for enhancing and conserving Aboriginal cultural heritage values. | |
|--|--|--|

Table 6 – Relevant Statement of Commitments

| SoC Reference Number | Commitment | Relevant AACHMP Section |
|----------------------|---|-------------------------|
| 18 | The salvage and protection of all known Aboriginal objects within the Project Boundary will be managed in accordance with an Aboriginal Archaeology and Cultural Heritage Management Plan to be developed in consultation with the local Aboriginal community and OEH. | This document |
| 19 | Maules Creek Coal will consult with Boggabri Coal Mine and contribute to the establishment and ongoing funding of a keeping place for the purpose of housing salvaged Aboriginal artefacts from the local area. | Appendix AA-5.1A-4.2 |
| 20 | Maules Creek Coal will provide the opportunity for one representative of the Aboriginal community to be a member of the Maules Creek Coal CCC. Maules Creek Coal will provide the opportunity for one representative of the Aboriginal community to be a member of the Maules Creek Coal CCC. | 3 |
| 21 | Maules Creek Coal will offer training in relation to site recording, artefact recording and basic analysis. Maules Creek Coal will offer training in relation to site recording, artefact recording and basic analysis. | 5.1 |

Appendix 2: Registered Aboriginal Parties

| Ref | Group | Primary Contact |
|-----|---|--|
| 1 | Cacatua Cultural Consultants (CCC) | George Sampson |
| 2 | Min Min Aboriginal Corporation (MMAC) | Gwen Griffen |
| 3 | Red Chief Local Aboriginal Land Council (RCLALC) | Chief Executive Officer |
| 4 | Gunida Gunyah Aboriginal Corporation (GGAC) | Jane Bender |
| 5 | Bigundi Biame Traditional People (BBTP) | Wayne Griffiths |
| 6 | Ellilewis | Patrica Jean Hands |
| 7 | Aboriginal Native Title Consultants (ANTC) | John Matthews |
| 8 | Giwiirr Consultants (GC) | Rodney Matthews |
| 9 | Hunter Valley Culture Consultants (HVCC) | Christine Archbold |
| 10 | Mingga Consultants (MC) | Clifford Matthews (Mick) |
| 11 | Upper Hunter Heritage and Culture Consultants (UHHCC) | Darrell Matthews |
| 12 | Narrabri Local Aboriginal Land Council (NLALC) | Edward Trindall |
| 13 | Gomeroid Narrabri Aboriginal Corporation (GNAC) | Craig Trindall – Narrabri National Park Cultural officer |
| 14 | Wee Waa LALC (WWLALC) | Robyn Keeffe |
| 15 | Aboriginal Natural Resource Officer (ANRO) | Jason Wilson |
| 16 | Carrawonga Consultants (CC) | Justin Matthews |
| 17 | Mooki River Consultants (MRC) | Wayne Matthews |
| 18 | Wiawa Aboriginal Corporation (WAC) | Brian Warren |
| 19 | Gomeroid Cultural Consultants (GCC) | David Horton |
| 20 | Traditional Local Site Trackers (TLST) | Troy Silver |
| 21 | - | Cindy Foley |
| 22 | Wunga-Li Traditional Owners (WLTO) | Veronica Talbot |
| 23 | AT Gomilaroi Cultural Consultancy | Aaron Talbot |
| 24 | ACA ROOFING (ACA) | Sonny Fitzroy |
| 25 | Gomeroid – Namoi | Stephen Talbot |
| 26 | White Cockatoo | Michael Long |
| 27 | - | Brian Draper |
| 28 | - | Wendy Talbot |
| 29 | - | Leonard Talbot |
| 30 | Gomeroid People Native Title Claim (NC11/6) Registered Native Title Applicant | Ross Mackay Strategic Project Director – NTSCORP |
| 31 | - | Ronald Long |
| 32 | - | Loretta (Long) Uren |
| 33 | - | Ian Long |
| 34 | - | Yvonne Rodgers |
| 35 | - | Natasha Rodgers |
| 36 | - | Robert Miller |
| 37 | - | Natasha Talbot |
| 38 | - | Tyan Silver |
| 39 | - | Sky-Lee Silver |
| 40 | Kawul Cultural Services | Vicky Slater |
| 41 | Aboriginal T/O Surveys | Gloria Foley |
| 42 | - | Dean Foley |
| 43 | - | James Foley |
| 44 | - | Leonard Draper |

| Ref | Group | Primary Contact |
|------------|--|------------------------|
| 45 | - | Leanne Foley |
| 46 | - | Gloria Maltby |
| 47 | - | Lesbra Shumack |
| 48 | - | Rita Long |
| 49 | - | Kerry Fernando |
| 50 | Gomerioi Murri Ganuurr Yuuray Wadi Palinka | Greg Griffiths |
| 51 | - | Marjorie Talbott |
| 52 | - | Gary Griffiths |
| 53 | - | Samuel Cameron |
| 54 | HECMO Consultants | Mitchum Neave |
| 55 | - | Hazel Collins |
| 56 | - | Kathy King |
| 57 | - | Linda Whitten |
| 58 | - | Jason Whitten |
| 59 | - | Anthony Bennett |
| 60 | - | Allan Talbott |
| 61 | - | Scott Talbott |
| 62 | Deslee Talbott Consulting | Deslee Matthews |
| 63 | - | Toni Comber |
| 64 | Wunda Cultural Consultants | Travis Matthews |
| 65 | Bawurra | Kevin Sampson |
| 66 | - | Clifford Johnson |
| 67 | Muswellbrook Cultural Consultants | Brian Horton |
| 68 | - | Veronica Long |
| 69 | Curindi Consultants | Rona Slater |
| 70 | T&G Culture Consultants | Tony Griffiths |
| 71 | - | Shannon Draper |
| 72 | AGA Services | Adam Sampson |
| 73 | L.J. Culture Management | Les Field |
| 74 | - | Amanda Heard |
| 75 | - | Cyril Sampson |
| 76 | ENT Cultural and Heritage | Esther Tyre |
| 77 | Woonaruah Cultural Heritage | Gordon Griffiths |
| 78 | Waabi Gabinya Cultural Consultancy | Elizabeth Howard |
| 79 | Cheryl Moodie Consultants | Cheryl Moodie |
| 80 | - | Rodger Noel Matthews |
| 81 | - | Joan Suey |
| 82 | - | Shirley Talbott |
| 83 | - | Derrek Talbott |
| 84 | Breeza Plains Culture Heritage Consultant | Terry Matthews |
| 85 | - | Neville Sampson |
| 86 | - | Melissa Hooper |
| 87 | - | Aleena Eather |
| 88 | - | Paul Moodie |
| 89 | - | Norm Long |
| 90 | Myland Cultural and Heritage Group | Wayne Schillings |
| 91 | Galamaay | Karen Matthews |
| 92 | DRM | Helen Faulkner |

| Ref | Group | Primary Contact |
|------------|--|------------------------|
| 93 | - | Robyn Wiggier |
| 94 | - | David Maltby |
| 95 | - | Antwinette Squires |
| 96 | - | Melissa Corkery |
| 97 | Smith Dhagaans Cultural Group | Tim Smith |
| 98 | - | Adam Budden |
| 99 | I&E Aboriginal Culture and Heritage | Ivy Jaeger |
| 100 | Marie- Ellen Griffiths Cultural Management | Marie Ellen Griffiths |
| 101 | Wurrumay Consultant | Kerrie Slater |
| 102 | Gomeroi 7ndigenous mining company | Marvonja Welsh |
| 103 | - | Patricia Hampton |
| 104 | Jumbumma Traffic Management Group Pty Ltd | Norman Archibald |
| 105 | Yinarr Cultural Services | Kathie Kinchela |
| 106 | - | Dorothy Tighe |
| 107 | Tribes United Aboriginal Corporation | Richard Green |
| 108 | - | Pam Silver |
| 109 | - | Clinton Lamb |
| 110 | - | Douglas McGrady |
| 111 | - | Wesley Binge |
| 112 | - | Kye McKenzie |
| 113 | - | Josie Conlan |
| 114 | - | Lillian Gillon |
| 115 | - | Joshua Silver |
| 116 | - | Josh Silver |
| 117 | - | Corey Lamb |
| 118 | - | Nathan Sellers |
| 119 | - | Gavin Close |
| 120 | - | Ruby Copeland |
| 121 | - | Emily Roberts |
| 122 | - | Gordon Copeland |
| 123 | - | Ruth Sampson |
| 124 | - | Robert King |
| 125 | - | Alison Sampson |
| 126 | - | Angus Binge |
| 127 | - | Hollie Dorrington |
| | | |
| 129 | - | Leslie Bracken |
| 130 | - | Daniel Smith |
| 131 | - | Aaron Walton |
| 132 | - | Fiona Draper |
| 133 | - | Chantae Griffiths |
| 134 | - | Grant Trindall |
| 135 | - | Callum Trindall |
| 136 | - | Peter Swan |
| 137 | - | Paul McGrady |
| 138 | - | Leo Walker |
| 139 | - | Ian Jerrard |
| 140 | - | Jimmy Thomas |

| Ref | Group | Primary Contact |
|------------|--------------|------------------------|
| 141 | - | Gary Suey |
| 142 | - | Melissa Conlan |
| 143 | - | David MaGuire |
| 144 | - | Terrance Jones |
| 145 | - | Carla Suey |
| 146 | - | Joshua Suey |
| 147 | - | Jason Suey |
| 148 | - | Louise Conlan |
| 149 | - | Thorn Conlan |
| 150 | - | Rebecca Beyzade |
| 151 | - | Jane Conlan |
| 152 | - | Heath Conlan |
| 153 | - | Anthony James Conlan |
| 154 | - | Sarah Jones |
| 155 | - | Wayne McDonald |
| 156 | - | Ronald Suey |
| 157 | - | Linda Suey |
| 158 | - | John Suey |
| 159 | - | Wayne Conlan |
| 160 | - | Elizabeth Humble |
| 161 | - | Sam Connolly |
| 162 | - | Sandy Aldridge |
| 163 | - | Vickie Wortley |
| 164 | - | Lorna Lamb |
| 165 | - | June Field |
| 166 | - | David Dorrington |
| 167 | - | Dalton Dorrington |
| 168 | - | Benny Murray |
| 169 | - | |
| 170 | - | Elaine Binge |
| 171 | - | James Thomas Jnr |
| 172 | - | Jeanette Crozier |
| 173 | - | Wendy Slade |
| 174 | - | Michael Trindall |
| 175 | - | Shaun Dixon |
| 176 | - | Carol Walsh |

| Group | Primary Contact |
|--|------------------------|
| Loretta Tighe | - |
| Gomeroid Applicant c/- NTSCORP Limited | William Scott |
| Teresa Copeland | - |
| Guyinbaraay people Clan group | Greg Griffiths |
| Wingarra Wilay Aboriginal Corporation | Raymond Moon |
| Guda Birgingira Aboriginal Corporation | Aliethea Cutmore |
| Douglas Tighe | - |
| Charlia-Heather Tighe-Boney | - |
| Bradley Prince | - |
| Laura Copeland | - |
| Girragirra Murun Aboriginal Corporation | Diana Astin |
| Lyll Kennedy | - |
| Tyan Silver | - |
| Wendy Slade | - |
| Wurrumay Consultant | Kerrie Slater |
| Curindi Consultants | Rona Slater |
| Kawul Cultural Services | Vicky Slater |
| Daniel Smith | - |
| Carla Suey | - |
| Gary Suey | - |
| Jason Suey | - |
| John Suey | - |
| Linda Suey | - |
| AT Gomilaroi Cultural Consultancy | Aaron Talbott |
| Gomeroid – Namoi | Stephen Talbot |
| Scott Talbott | - |
| Shirley Talbott | - |
| Leonard Talbott | - |
| Wunga-Li Traditional Owners (WLTO) | Veronica Talbott |
| Dorothy Tighe | - |
| Narrabri Local Aboriginal Land Council (NLALC) | Edward Trindall |
| Carol Walsh | - |
| Gomeroid Indigenous Mining Company | Marvonnia Welsh |
| Min Min Aboriginal Land Council (MMAC) | To Whom It My Concern |
| Robyn Wizgier | - |
| Red Chief Local Aboriginal Land Council | CEO |
| Senior Solicitor NTS Corp | NTS Corp |
| Min Min Aboriginal Land Council (MMAC) | Gwen Griffen |
| Joshua Silver | - |
| Jane Conlan | - |
| Gomeroid Murri Ganurr Yuuray Wadi Palinka | Greg Griffiths |

| Group | Primary Contact |
|---|------------------------------------|
| Veronica Long | - |
| Melissa Hooper | - |
| Aleena Te Awa | - |
| Lillian Gillon | - |
| Rita Long | - |
| Ronald Long | - |
| David MaGuire | - |
| Deslee Talbott Consulting | Deslee Matthews |
| Mooki River Consultants (MRC) | Wayne Matthews |
| Wayne McDonald | - |
| Robert Miller | - |
| Paul Moodie | - |
| HECMO Consultants | Mitchum Neave |
| Natasha Rodgers | - |
| Yvonne Rodgers | - |
| Alison Sampson | - |
| Cacatua Cultural Consultants (CCC) | George Sampson |
| AGA Services | Adam Sampson |
| Bawurra | Kevin Sampson |
| Ruth Sampson | - |
| Myland Cultural Heritage Consultants | Wayne Schillings |
| Gary Griffiths | - |
| Marie-Ellen Griffiths Cultural Management | Marie-Ellen Griffiths |
| Bigundi Biame Traditional People (BBTP) | Wayne Griffiths |
| Patricia Hampton | - |
| Amanda Heard | - |
| David Horton | - |
| Elizabeth Howard | Waabi Gabinya Cultural Consultancy |
| Elli Lewis | Patrica Jean Hands |
| Sarah Jones | - |
| Wee Waa LALC (WWLALC) | Robyn Keefe |
| Yinarr Cultural Services | Kathie Kinchela |
| Kathy King | - |
| Clinton Lamb | - |
| White Cockatoo | Michael Long (Snr) |
| Norm Long | - |
| Loretta (Long) Uren | - |
| Sandy Aldridge | - |
| Jumbumma Traffic Management Group Pty Ltd | Norman Archibald |
| Gunida Gunyah Aboriginal Corporation (GGAC) | Jane Bender |
| Rebecca Beyzade | - |
| Wahgunyah Housing Aboriginal Corporation | Kate Briggs |
| Adam Budden | - |

| Group | Primary Contact |
|--------------------------|------------------------|
| Samuel Cameron | - |
| Anthony James Conlan | - |
| Heath Conlan | - |
| Josie Conlan | - |
| Louise Conlan | - |
| Melissa Conlan | - |
| Thorn Conlan | - |
| Sam Connolly | - |
| Gordon Copeland | - |
| Ruby Copeland | - |
| Clifford Copeland | - |
| Dalton Dorrington | - |
| David Dorrington | - |
| Brian Draper | - |
| Fiona Draper | - |
| Leonard Draper | - |
| Shannon Draper | - |
| Angus Binge | - |
| Kerry Fernando | - |
| June Field | - |
| L.J. Culture Management | Les Field |
| Cindy Foley | - |
| Dean Foley | - |
| L.J. Cultural Management | Gloria Foley |
| James Foley | - |
| Leanne Foley | - |

Appendix 3: Ongoing consultation with RAPs

It is the responsibility of RAPs to ensure that up-to-date contact details (full name, postal address, telephone number, and where possible, email address) are provided to MCCM. At regular intervals, generally on a 6–12-month basis, MCCM will mail out forms to RAPs to give them with the opportunity to provide up to date contact details. These details will be updated on the register of RAPs which will be maintained by MCCM over the life of the project. RAPs are also encouraged to contact MCCM to update their details as needed.

Ongoing consultation with RAPs occurs via meetings throughout the project life cycle. Meetings are open to all RAPs and provide a forum for RAPs to raise any issues they may have regarding the MCCM and for MCCM to provide updates. The communication protocol is attached as Appendix C to ensure that all parties have a clear understanding of their roles and responsibilities in relation to this AACHMP.

Meetings with RAPs will be convened by MCCM every twelve months. Issues that may be discussed in the meetings include (but are not limited to):

- mine progress;
- update on Keeping Place;
- fieldwork timing and arrangements;
- fieldwork policies and protocols;
- implementation of Aboriginal Cultural Awareness Training;
- AACHMP review;
- key results of any fieldwork (including the outcomes of salvage activities and post-salvage analysis and any additional training opportunities);
- update on the Aboriginal Heritage Conservation Strategy; and
- RAP input on, and facilitating access to, certain species of flora and fauna for cultural purposes.

RAPs will be notified of upcoming meetings with a minimum of 14 days' notice.

Aboriginal community members other than RAPs may attend individual meetings, if agreed by MCCM prior to the meeting.

Additional meetings with RAPs (i.e. in addition to the annually scheduled meeting) may be held on an as required/requested basis if agreed by MCCM and may be called to address issues that cannot be dealt with by means of established protocols.

Meeting notes of all RAP meetings (i.e. the annual meeting and any additional meetings) will be made available to all RAPs at subsequent meetings.

Appendix 4: Management of salvaged artefacts and sites

A-4.1 Aboriginal archaeological salvage program

An archaeological salvage program will be undertaken within the disturbance footprint as the mine advances. This program is designed to meet Project Approval Conditions 57 & 58 for the MCCM. In order to accommodate potential research direction changes brought about by Condition 57 – Aboriginal Heritage Conservation Strategy, a modular open research program has been developed on the broad principles of previous regional studies (e.g. the Brigalow Belt South Aboriginal Cultural Heritage Study - NSW National Parks and Wildlife Service (NSW National Parks and Wildlife Service, 2002)). The ongoing salvage of existing and any potential new sites will be determined according to an assessment of each Aboriginal archaeological site's scientific significance; a site's significance is closely connected to its potential to yield data on human occupation of the wider area.

a) RAP participation in fieldwork

All RAPs will be offered the opportunity to apply for participation in the archaeological salvage program and other relevant fieldwork described in this AACHMP. Engagement of RAPs for participation in fieldwork will be based on the system described below.

1. A standard field investigation team will consist of one qualified archaeologist and up to four RAPs or RAP representatives. Departure from this standard may occur in certain circumstances, for example during monitoring/inspection of cultural heritage sensitive areas which would involve two RAPs/RAP representatives (Appendix 2: Registered Aboriginal Parties)
2. In some circumstances a field program may require the parallel involvement of more than one field investigation team (e.g. to complete salvage activities quicker prior to commencement of surface disturbance activities).
3. Inclusion of individuals on field work investigation teams will be by written application from RAPs. Only a RAP can apply to have an individual included in field work.
4. If a RAP is an individual, they may be represented by themselves or an appropriately experienced field officer who meets MCCM's WHS and insurance requirements.
5. If a RAP is a group/organisation/company it may be represented by any member of that RAP group/organisation/company if the individual's details are provided to MCCM at the time of making written application and the individual can comply with MCCM's WHS and insurance requirements.
6. Involvement in fieldwork will be based on whether RAP representatives satisfy MCCM's insurance and WHS requirements.
7. Each RAP or RAP representative will be generally allocated up to five field days (depending on the scope of work). The five field days do not necessarily need to be consecutive and will depend on the fieldwork program/schedule. For example, an individual may be invited to participate in five consecutive days or several campaigns of one, two or three days, depending on the fieldwork program/schedule. Engagement for participation in field work will be based on the merits of each written application received. Applications for involvement in field work will be evaluated and successful applications will be selected based on their ability to demonstrate connection to country, experience in the field and representativeness/ability to communicate findings to many Aboriginal stakeholders. In some circumstances, exceptional applications may be offered more than the standard five-day allocation.

At least five days' notice will be provided to individuals prior to field work as a standard. In some circumstances, MCCM may not be able to give 5 days' notice.

8. As part of the field work notification, individuals will be given a brief description of the works required, including which sites/areas are to be salvaged/inspected/monitored. MCCM respects that gender issues may be relevant to some sites/areas although it will be the responsibility of the invited individual to determine if they do not wish to attend based on gender restrictions. If an individual does not wish to attend based on gender restriction, they may be invited to participate in the next field campaign.

9. All participants of the field investigation team are required to comply with the following MCCM WHS and insurance requirements (proof of which is required to be provided to MCCM prior to undertaking any works onsite):
 - a. Valid public liability insurance.
 - b. Valid workers' compensation insurance (or equivalent to the satisfaction of MCCM).
 - c. Hard hat.
 - d. Safety glasses.
 - e. Long sleeved shirt and pants.
 - f. Safety boots.
 - g. High visibility vest or shirt.
 - h. Gloves.
 - i. All MCCM staff and contractors (including archaeologists and RAPs) may be subject to random drug and alcohol tests. Any person that returns a non-negative test will only be permitted to undertake further work at MCCM strictly at the discretion of MCCM Management.
 - j. All MCCM staff and contractors (including archaeologists and RAPs) must be able bodied and fit to undertake the work required. In some circumstances, MCCM reserves the right to require written advice from a medical practitioner to support an application for inclusion in field work.
10. RAPs or RAP representatives will only be included in field work once they can demonstrate compliance with MCCM's WHS and insurance requirements.
11. Scheduled fieldwork will not be delayed due to RAPs or RAP representatives' inability to comply with MCCM's WHS and insurance requirements. Subject to suitable notification requirements being met by MCCM as described in point 7 above, the fieldwork salvage (and/or other heritage management works required by this AACHMP) may commence to avoid unnecessary delays to mining operations at the MCCM.
12. All MCCM staff and contractors (including archaeologists and RAPs) will be required to adhere to relevant MCCM behaviour protocols.

The MCCM WHS and insurance requirements are subject to periodical review and update by MCCM outside the requirement for this AACHMP to be revised. All contractors, including participating archaeologists and RAPs, will be notified of any relevant changes to fieldwork requirements.

b) Surface collection

The objective of the surface collection component of the salvage program is to systematically record and recover a sample of visible surface artefacts within open artefact sites. Should a previously recorded site not be able to be relocated after a reasonable search effort (to be determined by the qualified archaeologist in consultation with the attending RAPs) then the site may be considered to have been salvaged, and steps will be taken to have the classification/status of relevant sites updated within the AHIMS database accordingly.

The majority of artefact scatters within the MCCM Project Approval Boundary scheduled to be impacted by MCCM activities have already been salvaged through surface collection and excavation.

Surface Collection: Research Questions

The potential significance of a site guides the surface collection methodology described under *Methodology* below. The potential significance is in turn determined through asking a series of research questions, examples of which are presented below:

1. What, if any, spatial patterning is apparent in the distribution of major artefact classes across the MCCM Project Boundary?
2. What, if any, patterning is apparent in the distribution of raw material types across the MCCM Project Boundary?
3. Does artefact distribution vary significantly in relation to landform?
4. Does artefact distribution vary significantly in relation to slope?

5. Does artefact distribution vary significantly in relation to distance to water?
6. Does artefact distribution vary significantly in relation to stream order?
7. Does artefact distribution vary significantly in relation to geology?
8. Does artefact distribution vary significantly in relation to aspect?

Methodology

Surface collection will be undertaken by a combined field team of qualified archaeologists and RAP representatives and will involve:

1. the flagging of all visible artefacts within each site;
2. the recording of individual artefact locations using a GPS;
3. site photography; and
4. bagging of identified artefacts.

Written notification of sites cleared for ground disturbance works will be provided by the attending qualified archaeologist to MCCM on a progressive basis as sites are salvaged (Appendix D). Generally, this will be completed at the end of the salvage campaign within a 2-4 week period. Aboriginal Site Impact Recording Forms (ASIRF) are also completed and submitted to the AHIMS following impact.

All surface collected artefacts will be assigned a Unique Reference Number (URN) for accessioning and data analysis purposes. Analysis of surface artefacts will be conducted off site on a progressive basis.

As part of the surface collection program, previously recorded sites that could not be relocated during the survey undertaken for the EA will be revisited. A sample of Aboriginal objects identified within these sites, sufficient to answer substantive research questions, will be salvaged according to the methodology outlined above.

c) Archaeological test and open area excavations

Archaeological excavation has been undertaken at two Aboriginal archaeological sites within the MCCM Project Boundary (AHIMS 20-4-0026 and AHIMS 20-4-0027) and was proposed because of the potential these sites held for providing scientific data on past Aboriginal occupation of the local area.

The primary objectives of these excavations were as follows:

1. to establish the extent and nature of subsurface archaeological materials at these sites; and
2. to recover stone artefact assemblages of a size sufficient for a meaningful analysis of the relationship between assemblage composition and past Aboriginal behaviour at and between these sites.

The potential for future excavation of newly identified sites in the MCCM Project Boundary is contingent on the identification of sites of high scientific significance. In order for an Aboriginal archaeological site to be considered of high scientific significance, it would need to display evidence of good spatial integrity, in situ stratigraphic deposits, and low-level disturbance. Alternatively, a site type unique to the wider area would also be considered high scientific significance.

Excavation: Research Questions

The following research questions have been used to guide the excavation and post-excavation artefact analysis components of archaeological salvage works:

1. What, if any, spatial patterning is evident in the distribution of recovered artefactual material from these sites?
2. How long have Aboriginal people utilised these sites?
3. Do these sites represent 'persistent places' in the sense of sustained/repeated occupation?
4. What activity or combination of activities occurred at these sites?
5. What lithic raw materials were used on these sites and where did they come from?
6. What knapping techniques/strategies were used at these sites?
7. What types of tools were produced on these sites?

8. What function(s) did these tools serve?
9. Do the chipped stone assemblages recovered from these sites differ from other excavated sites in the region? If so, how?

d) Archaeological excavation – methodology

Excavations at sites of potential high significance will be undertaken in two phases:

1. initial testing using one or more linear transects of hand excavated, regularly spaced shovel test pits; and
2. open area hand excavation of key areas identified through initial testing.

If the initial program of shovel test pits determines that the site can no longer be considered to be of high scientific significance, then Phase 2 (open area excavation) will not be undertaken. For instance, if shovel test pitting revealed evidence of poor spatial integrity at the site, there would remain little value in a more detailed scientific investigation of the site through open area excavation.

Test Excavation

A program of shovel test pitting has been undertaken at 14 archaeological sites (see Table 11Table 7). This stage of excavation was conducted in order to identify each site's extent and assist in focussing subsequent salvage excavation efforts on recovery of concentrated sub-surface deposits. The majority of sites subjected to test excavation (shovel test pits) revealed a heavily disturbed, shallow soil profile not warranting more detailed subsurface investigation. Open area excavation was limited to the two artefact scatters with considerable artefact densities, though these too later revealed a limited level of spatial integrity within the soil profile.

Table 7 Sites Subject to Shovel Test Pitting

| AHIMS # | Site Name | # STPs | Resulting Comment |
|-----------|--|--------|---|
| 20-4-0403 | Leard SF AS1 | 12 | Poor spatial integrity and limited subsurface artefacts Open area excavation not recommended |
| 20-4-0078 | Leard SF 3; BBS; Red Chief LALC | 7 | Poor spatial integrity and limited subsurface artefacts Open area excavation not recommended |
| 20-4-0028 | MC15 | 51 | Poor spatial integrity and limited subsurface artefacts Open area excavation not recommended |
| 20-4-0077 | Leard SF4; BSB; Red Chief LALC | 3 | Thin soil profile and no subsurface artefacts Open area excavation not recommended |
| 20-4-0500 | Leard SF AS3 | 8 | Poor spatial integrity and limited subsurface artefacts Open area excavation not recommended |
| 20-4-0021 | Willow Tree Range; Teston; Therribri (MC8) | 6 | Poor spatial integrity and limited subsurface artefacts Open area excavation not recommended |
| 20-4-0488 | Teston AS13 | 11 | Poor spatial integrity and limited subsurface artefacts Open area excavation not recommended |

| AHIMS # | Site Name | # STPs | Resulting Comment |
|------------------------|--|--------|--|
| 20-4-0020 | Willow Tree Range; Teston; Therribri (MC7) | 11 | Poor spatial integrity and no subsurface artefacts Open area excavation not recommended |
| 20-4-0023 | Willowtree Range; Teston; Therribri (MC10) | 8 | Poor spatial integrity and no subsurface artefacts Open area excavation not recommended |
| 20-4-0456 | Teston AS1 | 2 | Poor spatial integrity and limited subsurface artefacts Open area excavation not recommended |
| 20-4-0487 | Teston AS12 | 3 | Poor spatial integrity and limited subsurface artefacts Open area excavation not recommended |
| 20-4-0024 | Velyama; Manila (MC11) | 3 | Poor spatial integrity and limited subsurface artefacts Open area excavation not recommended |
| 20-4-0499 | Velyama AS8 | 19 | Poor spatial integrity and limited subsurface artefacts Open area excavation not recommended |
| 20-4-0026 20-4-0027 | Teston South Site Complex | 159 | Shallow soils with localised subsurface artefact concentrations 51 m ² open area excavation undertaken |
| 20-4-0881 | Leard SF AS7 | 9 | Poor spatial integrity and limited subsurface artefacts Open area excavation not recommended |

Test excavations (where required) will be undertaken as follows:

- A systematic grid of points spaced no more than 20 m apart will be overlaid over the site boundary (as determined from surface expression of artefacts). Areas of grossly modified terrain (i.e. Dams) will be excluded from the sampling universe.
- Shovel test pits 50 cm by 50 cm (0.25 m²) test pits dug by hand (shovel probe) at each gridded point.
- For the initial test excavation, all excavated material is to be sieved through 5 mm aperture screens. Nested 5 mm and 3 mm sieves are to be used for the full salvage excavation as per section 10.1.5 of the Aboriginal heritage impact assessment (AECOM, 2010).

Open Area Excavation Methodology (where required)

The proposed excavation methodology is as follows:

- All excavation will be carried out manually using trowels, shovels and mattocks (where appropriate).
- Open area excavation will proceed in 1 m² units.
- All excavation units (i.e., test pits and open area squares) will be assigned an alpha-numeric identifier.
- Excavation within open areas will proceed in arbitrary 10 cm spits or stratigraphic layers (whichever is thinnest).
- Excavation will cease at sterile units or bedrock in all instances.
- Photographic and scale-drawn records of exposed soil profiles in open area excavations will be made.

- If specific archaeological features (e.g. hearths) are identified, the entire feature will be excavated and recorded prior to the continuation of excavation. Features will be photographed, and scale plans drawn.
- Where encountered, charcoal deemed suitable for radiocarbon dating will be collected using 'best practice' guidelines (e.g., Burke and Smith, 2004: 154).
- If deemed appropriate on geomorphological grounds, sediment samples for OSL dating will be collected using 'best practice' guidelines (e.g., Burke and Smith, 2004: 152).
- All excavated soils will be wet or dry-sieved (dependent on composition) through nested 5 mm and 3 mm sieve.
- Artefacts recovered from sieving will be retained in plastic zip-lock bags and labelled with appropriate provenance data.
- A standard site recording form will be used for each 1 m² excavation unit and will include (as a minimum): site name, date, recorder, square identifier, number of spits, number of buckets and weight of each bucket.
- Upon completion of excavations, the location of all excavation units will be picked up by survey and incorporated into the topographic survey plan for the site.
- All excavation units will be backfilled upon conclusion of excavations at the site. No excavation will be left open unless approved by MCCM.

e) Archaeological salvage signoff

Operations will be allowed to commence subject to qualified archaeologist clearance sign off (appendix A-4.1).

f) Post-salvage analysis

Post-salvage analyses for surface collected and excavated sites (including sites collected during monitoring/inspection of the cultural heritage sensitive areas) will at minimum, include:

- The analysis and cataloguing of a sample of recovered Aboriginal objects (e.g. stone artefacts, hearth stones) by a suitably qualified person or persons. Excavated and surface collected stone artefacts will be considered by a qualified archaeologist for detailed technological analysis by a lithic specialist and a sample of collected material analysed.
- The submission, where deemed appropriate by a qualified archaeologist, of a selection of stone artefacts for functional use-wear/residue analysis. No more than 10 artefacts will be submitted for analysis.

Post-excavation analyses will not delay mining (or associated) activities within the boundaries of any salvaged sites.

Training in the undertaking of archaeological excavation and salvage (including archaeological site recording and basic lithic identification and analysis) has been provided throughout the salvage excavation program undertaken to date at the MCCM. Opportunities for additional training will be considered as the salvage and post-salvage analysis program is implemented over the life of the MCCM.

g) Archaeological salvage program reporting

A summary of the results of the archaeological salvage program undertaken (including the results of any post-excavation analyses) is to be completed and included in the Annual Review. A copy of the Annual Review (or relevant sections of the Annual Review) will be provided to any RAPs when requested. A detailed report of the results of the archaeological salvage program undertaken (including the results of any post-excavation analyses) is to be completed within one year of completion of the analyses and made available to the RAPs on request.

Consistent with the requirements of the Project Approval (10_0138) a comprehensive review of monitoring results will be included in the Annual Review.

A-4.2 Artefact curation and Aboriginal Keeping Place

Consultation with RAPs to identify a culturally appropriate keeping place for all salvaged material from the MCCM has been undertaken. Although a final Keeping Place has not yet been determined, a Care Agreement, as required under the *NSW National Park and Wildlife Act 1974*, is now in place with Red Chief LALC.

An Interim Keeping Place was established to store salvaged Aboriginal objects from the salvage program prior to the Care Agreement being implemented. This Interim Keeping Place is still utilised for recently salvaged objects that are waiting to be transferred to storage under the Care Agreement or awaiting further post-salvage analysis.

The Interim Keeping Place (and final Keeping Place) will also serve as a storage facility for plant specimens and cultural knowledge acquired as part of the Quinine Bush management program (Appendix 0).

Consultation regarding the keeping place is ongoing and will be discussed with all RAPs at scheduled RAP meetings (Appendix 3: Ongoing consultation with RAPs).

A-4.3 Cultural heritage training for the community

In addressing Commitment 20 from the EA SoC, MCCM has run training packages to interested RAPs in archaeological site recording and basic lithic identification and analysis.

In addition to the above workshops, training in the undertaking of archaeological excavation and salvage has been provided throughout the salvage excavation program.

As per Section 5.1 opportunities for additional training will be considered over the life of the MCCM.

A-4.4 Management of grinding grooves

a) Located within areas of direct disturbance

In instances where a grinding groove site is located within an area of known surface disturbance activities, and avoidance of the site is not practicable:

- A complete site recording as per AHIMS requirements and detailed archival recording (consistent with relevant NSW guidelines) is to be undertaken.
- Communication and consultation will occur with RAPs providing notification of any moderate to higher scientifically significant grinding groove sites. Notification will be provided in writing once adequate detail is available.
- Where the site is of low or low-moderate scientific significance, impacts will be permitted to occur. At a minimum, detailed archival recording of grinding groove sites will be undertaken by a suitably qualified and experienced archaeologist and will include:
 - detailed mapping of the individual grinding grooves and the site as a whole, including reference to any associated landscape features (e.g. drainage line, rise, rocky outcrops);
 - the compilation of a thorough photographic archive of the site and its immediate context; and
 - detailed drawing of individual grinding grooves incorporating measurements of each groove's length, width, depth, and orientation.
- Where the site is of moderate or higher scientific significance, MCCM will consider additional potential management measures for the site. This may include consideration of, for example, burial (if located within the extent of an emplacement or stockpile), use-wear and residue analysis and/or further research, or salvage. The ultimate decision or additional management will be dependent on the particulars of the situation (e.g. nature of the site and disturbance required). Any management options would be considered in consultation with a qualified engineer (or relevant expert) and RAPs (i.e. via written correspondence and/or a meeting as per the procedures outlined in Appendix 3).
- Following treatment of the site, an Aboriginal Site Impact Recording Form would be completed and lodged with Heritage NSW.

b) Located outside areas of direct disturbance

All grinding groove sites that are located outside of areas of direct disturbance would be fenced as per the protocol outlined in section 5.1 and subject to the following monitoring process.

An initial visual inspection of the site to allow site recording as per the OEH site card and sufficient recording to act as a baseline record for subsequent monitoring. The baseline recording will include a thorough photographic archive for future comparison.

Visual inspection of the site will be undertaken during the annual monitoring program (section 6).

Where a grinding groove site is located within 500 m of blasting activities, MCCM would engage a suitably qualified expert (e.g. geotechnical engineer) to determine an appropriate blast vibration limit for the site⁶. This would occur on a progressive basis, and at least prior to blasting within 500 m of the site. Should the blast program be determined to have the potential to exceed the blast vibration limits, the process outlined in Appendix A-4.4(a) would be implemented, with management measures selected to reflect the likelihood of damage and the significance of the site.

A-4.5 Scarred tree removal

Although no known scarred trees will be impacted by the MCCM works, an example methodology has been developed based on industry best practice scarred tree removal and relocation procedure and will be employed to remove and store any scarred trees directly impacted by the MCCM, if any are identified in the future. The identification of trees as 'scarred trees' may include the involvement of an arborist or forestry specialist with relevant experience. The determination of the origin of the tree's scarring will also involve an archaeologist or anthropologist with relevant experience. If considered to be of likely cultural origin, the archaeologist or anthropologist will offer advice on the tree's removal, in consultation with the attending RAPs or appropriate Indigenous knowledge holders. The removal of the tree will follow a four-step procedure:

1. pre-removal preparation;
2. removal/relocation;
3. storage; and
4. management/preservation.

Should a possible scarred tree be identified and then later determined to not be of Aboriginal origin by an archaeologist, anthropologist, arborist, or forestry specialist in consultation with the RAPs, a technical report would be prepared. This report would be provided to the OEH and made available to the RAPs. A copy would also be forwarded to the AHIMS registrar so that the status of the tree can be appropriately recorded (as necessary).

⁶ MCCM may use existing advice from a suitably qualified expert for this purpose. Additional advice does not necessarily need to be obtained for each individual site.

Appendix 5: Contingencies and protocols

A-5.1 Procedure for the discovery of human remains

In the event that human remains (skeletal material) are discovered, the following procedure is to be followed:

- When suspected human remains are exposed, all work is to cease immediately in the near vicinity of the find location.
- Notify the MCCM Environment Superintendent immediately.
- The MCCM Environment Superintendent is to notify the Police immediately.
- The MCCM Environment Superintendent is to contact the Environment line on 131 555 to identify that possible skeletal remains have been discovered and that the police have been notified. Heritage NSW will provide details on the current processes involved in best dealing with archaeological skeletal remains (both Aboriginal & historic).
- Under the instructions of the Police, an area of 50 m radius is to be cordoned off by temporary fencing around the exposed suspected human remains site - work can continue outside of this area as long as there is no risk of interference to the human remains or the assessment of human remains.
- If the remains are determined to be Aboriginal remains, then under the advice of Heritage, consult with the RAPs.
- Do not recommence work at the location until all legal requirements and the reasonable requirements of Heritage NSW and the RAPs have been adequately addressed.

A-5.2 Procedure for the discovery of Aboriginal archaeological objects

If previously unidentified Aboriginal objects⁷ or potential Aboriginal objects are discovered throughout the life of the MCCM, the following procedure (in consideration of the *Guide to Investigating, assessing and reporting on Aboriginal cultural heritage in NSW* [OEH, 2011]) is to be adopted:

1. All works must cease immediately in the area to prevent any further impacts to the object(s) and the find location be temporarily fenced.
2. Notify the MCCM Environment Superintendent immediately, they will assess whether works can continue in the wider area with safeguards in place following consultation with the Archaeologist.
3. A qualified archaeologist will (in consultation with attending RAPs, when the object is determined to be of Aboriginal origin⁸) determine the nature, extent and scientific significance of the object(s).
4. The qualified archaeologist will determine the extent of the newly identified site and the site may be temporarily fenced off with an appropriate buffer to avoid further disturbance. Work will be able to resume in the vicinity of the newly identified site once the site has been demarcated and where there is no risk of further disturbance to the site, or once the appropriate management is undertaken.
5. If the site is determined to be of Aboriginal origin⁸ by the qualified archaeologist, proposed management actions will be discussed with attending RAPs. Following these discussions, management actions will be implemented (including salvage and/or other measures) in accordance with the procedures outlined in this AACHMP for the type of site.
6. If the site is determined to be of Aboriginal origin² but is located in an area already subject to archaeological salvage signoff, the qualified archaeologist will propose the management actions for the newly identified site in accordance with the procedures outlined in this AACHMP. If relevant to the type

⁷ Other than new evidence identified during heritage mitigation works in a location where evidence has previously been recorded (for example, new stone artefacts identified during surface collection or excavation of a known site).

⁸ As defined under the NSW National Parks and Wildlife Act, 1974.

of site and its location, MCCM may utilise a salvage team that is already onsite to complete the salvage works depending on the priority of the work area in relation to the construction and operational program.

7. In the event of a newly identified site type (i.e. a site type not already considered in this AACHMP), the qualified archaeologist will propose management actions (suitable to the nature and scientific significance of the site) for discussion with attending RAPs. Following these discussions, management actions will be implemented and documented accordingly. Correspondence will be provided to all RAPs (including those not attending in the field) to advise of the new site type and to document the undertaken and/or proposed management measures.
8. All salvaged material will be given a URN for accessioning and data analysis purposes All salvaged artefacts will then be deposited in the Keeping Place (refer to appendix A-5.2).
9. An AHIMS site card will be completed and submitted to Heritage NSW in compliance with s 89A of the NPW Act. A copy will also be provided to those RAPs who have indicated in writing that they would like a copy.
10. The MCCM Aboriginal Site Database is to be updated with the relevant information.
11. Revision of the AACHMP will occur in accordance with the protocols outlined in section 9.2. This revision will incorporate any newly identified sites and their management, but it is not required to occur prior to the implementation of the agreed management approach.

A-5.3 Independent review & AACHMP breach investigation

Where a person has good reason to believe that MCCM is in breach of this AACHMP, then firstly they must document fully the basis of their claim and submit it to MCCM for consideration.

Upon receiving a documented claim that MCCM is in breach of the AACHMP, the following procedure is to be followed:

1. The MCCM Environment Superintendent is to investigate the breach with respect to the AACHMP. This may include discussions with the complainant including via telephone or face-to-face meetings as suitable.
2. The MCCM Environment Superintendent reserves the right to engage a heritage technical advisor to review the alleged breach.

Where an activity has been determined by MCCM to depart from the AACHMP requirements, the following will occur:

1. Subject to the outcomes of the above, the MCCM Environment Superintendent will (in consultation with RAPs) seek to update the AACHMP as/if required.
2. Notification of the breach is to be provided by email to Secretary of DPHI, Heritage NSW, and all RAPs as soon as practicable.
3. A report detailing the breach will be prepared by MCCM and forwarded by email to the Secretary of DPHI and RAPs within twenty-eight days, or as otherwise directed by the Secretary of the DPHI following notification.
4. If the breach is considered to be an incident under the Project Approval, then MCCM will prepare a report of the incident and provide a copy to the Secretary of DPHI, Heritage NSW and all RAPs within seven days.
5. Within reason, further actions may be required dependent on the nature of any breach and comment received from DPHI, Heritage NSW, and RAPs.

If a person has good reason to believe that MCCM is not implementing the heritage conditions in schedule 3 of the Project Approval Conditions satisfactorily, then he/she may ask the Secretary in writing for an independent review of the matter (condition 4, Item 7). The person is required to fully document the claim and indicate how a condition is not being implemented according to the Project Approval.

If the Secretary is satisfied that an independent review is warranted, then within 2 months of the Secretary's decision, the Proponent shall:

1. Commission a suitably qualified, experienced and independent person, whose appointment has been approved by the Secretary, to:
 - consult with the person and/or relevant agencies;
 - investigate the person's complaints/claims;

- review the environmental performance of the Proponent;
 - determine whether the Proponent's performance is satisfactory or not; and if necessary
 - recommend measures to improve the Proponent's performance.
2. Give the Secretary and complainant a copy of the independent review.

All incidences of potential breaches are to be documented thoroughly with a register maintained by the Environment Superintendent at MCCM.

Appendix 6: Site salvage record form

ARCHAEOLOGICAL SITES SALVAGE RECORD FORM

Date:

Archaeological Clearance Type (please tick)

Aboriginal Archaeological Site

Location of Clearance Works (attach map of Works Area with co-ordinates of change points)

Site Name

Site ID

Easting GDA2020)

(Northing GDA2020)

Site Type

Salvage Method

Description of Archaeological Salvage Works

Comments/Recommendations

Signed:.....

Supervising Archaeologist