



Drawn By
CK

Scale
1:500 @ A1
1:1000 @ A3

Date
26.08.2010

Project No
2910

Drawing No
L-0109 Rev A

Drawing
LANDSCAPE PLAN

Project
EDMONDSON PARK - STAGE 1

Client
LANDCOM



LEGEND

- Stage 1 Boundary
- Fence around Parks
- Existing Tree to be retained
- Proposed Tree
- Residential Lots
- Street Verge Planting
- Turf / Lawn
- Playground surfaces
- Decomposed Granite
- Open Water
- Macrophytes / Raingardens
- Riparian Vegetation with Creepline
- Drainage Swale
- Road
- Footpath / Cyclepath
- Decomposed Granite Path (Fitness Path)
- Timber Deck / Bridge
- Gated Concrete Driveway (TBC with CCC)
- Seating Bench and Barbecue facilities



REFER DRAWING L-0108

REFER DRAWING L-0108



- LEGEND**
- Stage 1 Boundary
 - - - - Fence around Parks
 - Existing Tree to be retained
 - Proposed Tree
 - Residential Lots
 - Street Verge Planting
 - Turf / Lawn
 - Playground surfaces
 - Decomposed Granite
 - Open Water
 - Macrophytes / Raingardens
 - Riparian Vegetation with Creeklime
 - Drainage Swale
 - Road
 - Footpath / Cyclepath
 - Decomposed Granite Path (Fitness Path)
 - Timber Deck / Bridge
 - Gated Concrete Driveway (TBC with CCC)
 - Seating Bench and Barbecue facilities



Client	LANDCOM
Project	EDMONDSON PARK - STAGE 1
Drawing	LANDSCAPE PLAN
Drawing No	L-0110 Rev A
Project No	2910
Date	26.08.2010
Scale	1:500 @ A1 1:1000 @ A3
Drawn By	CK

REFER DRAWING L-0109

RAINGARDEN (3000 m2)
TO SERVICE CATCHMENT
AREA 3

REFER DRAWING L-0108

BARBECUE &
PICNIC AREA

BARBECUE &
PICNIC AREA

PASSIVE PARK

PROPOSED BUFFER PLANTING

PROPOSED BUFFER PLANTING

REFER DRAWING L-0109



Client
LANDCOM

Project
EDMONDSON PARK - STAGE 1

Drawing
LANDSCAPE PLAN - PARK DETAIL

Drawing No
L-0111 Rev A

Project No
2910

Date
26.08.2010

Scale
1:250 @ A1
1:500 @ A3

Drawn By
CK



Client
LANDCOM

Project
EDMONDSON PARK - STAGE 1

Drawing
LANDSCAPE PLAN - ENTRY PARK DETAIL

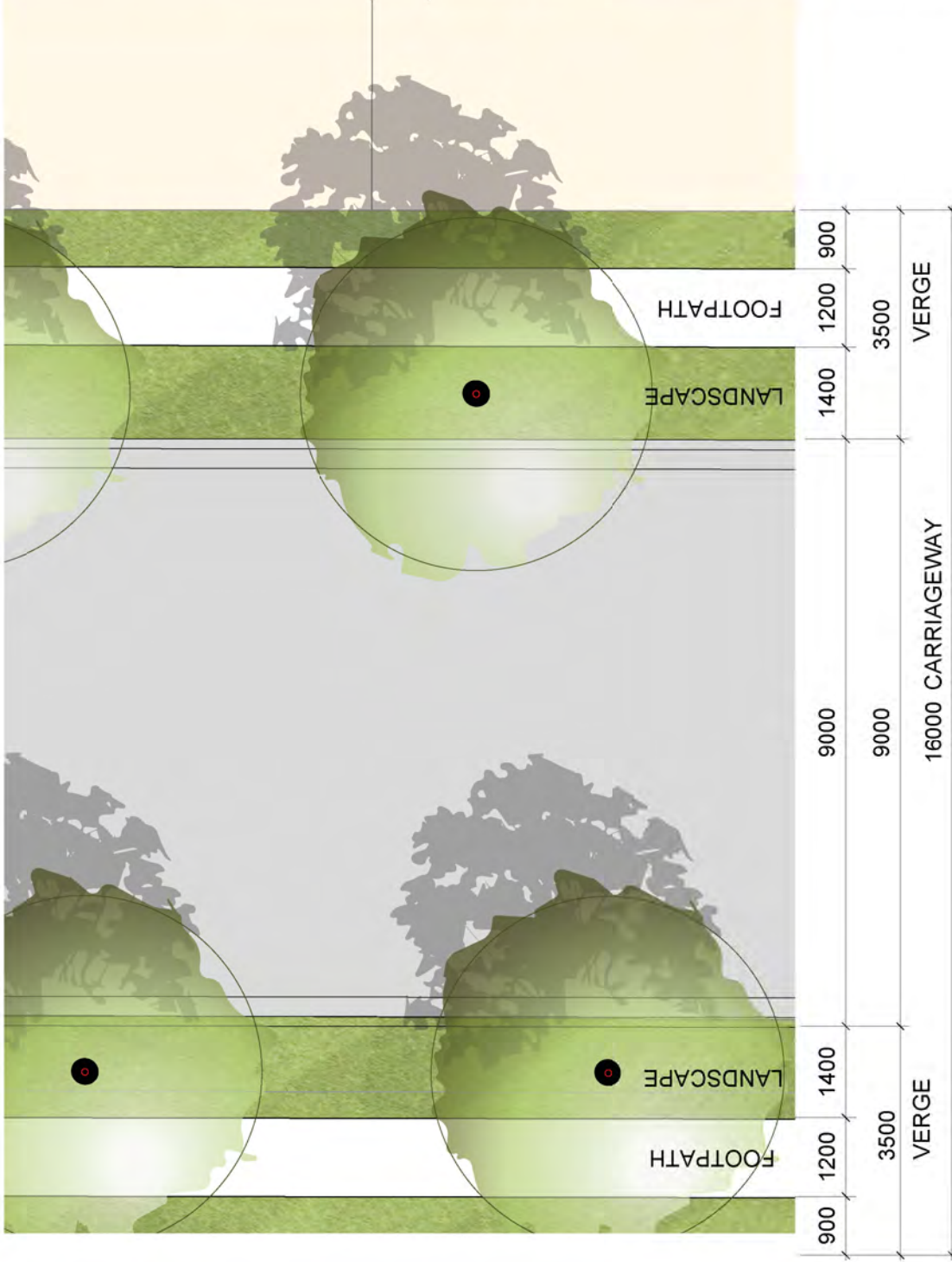
Drawing No
L-0112 Rev A

Project No
2910

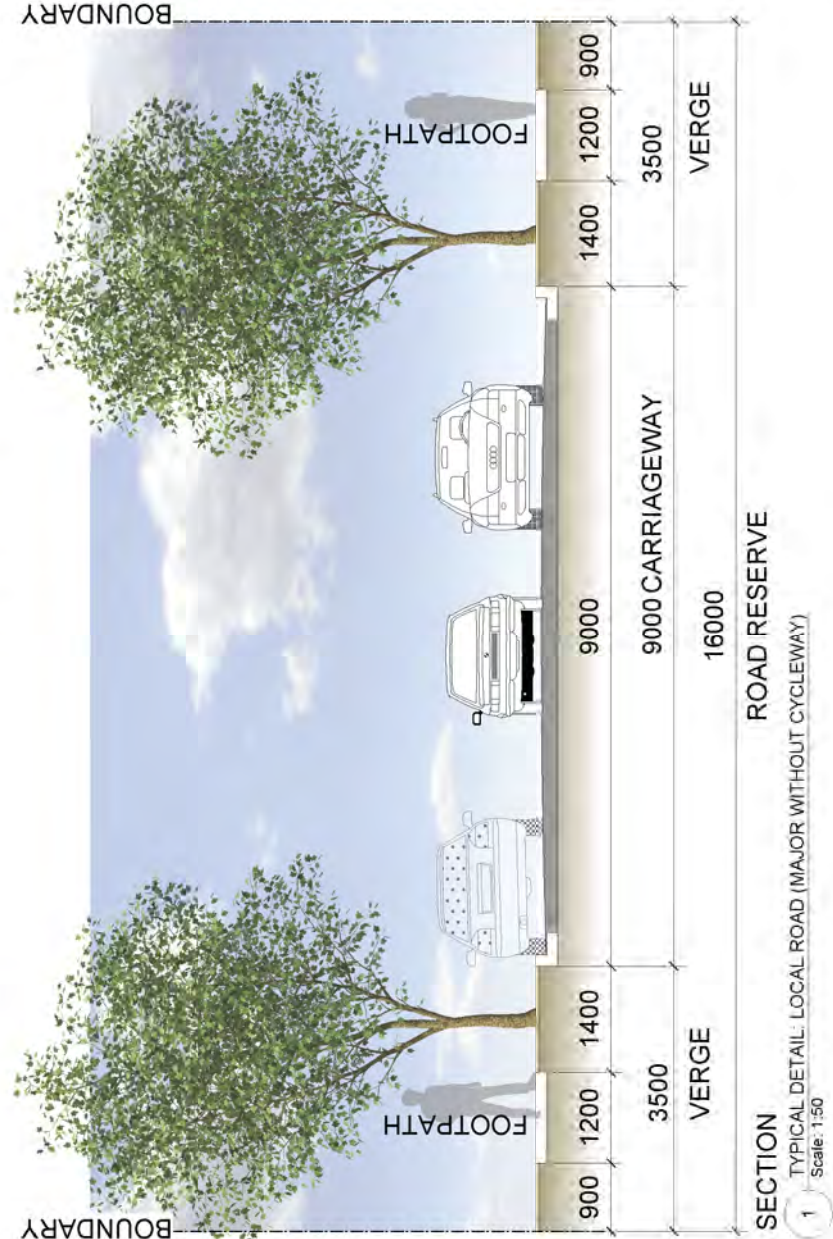
Date
26.08.2010

Scale
1:200 @ A1
1:400 @ A3

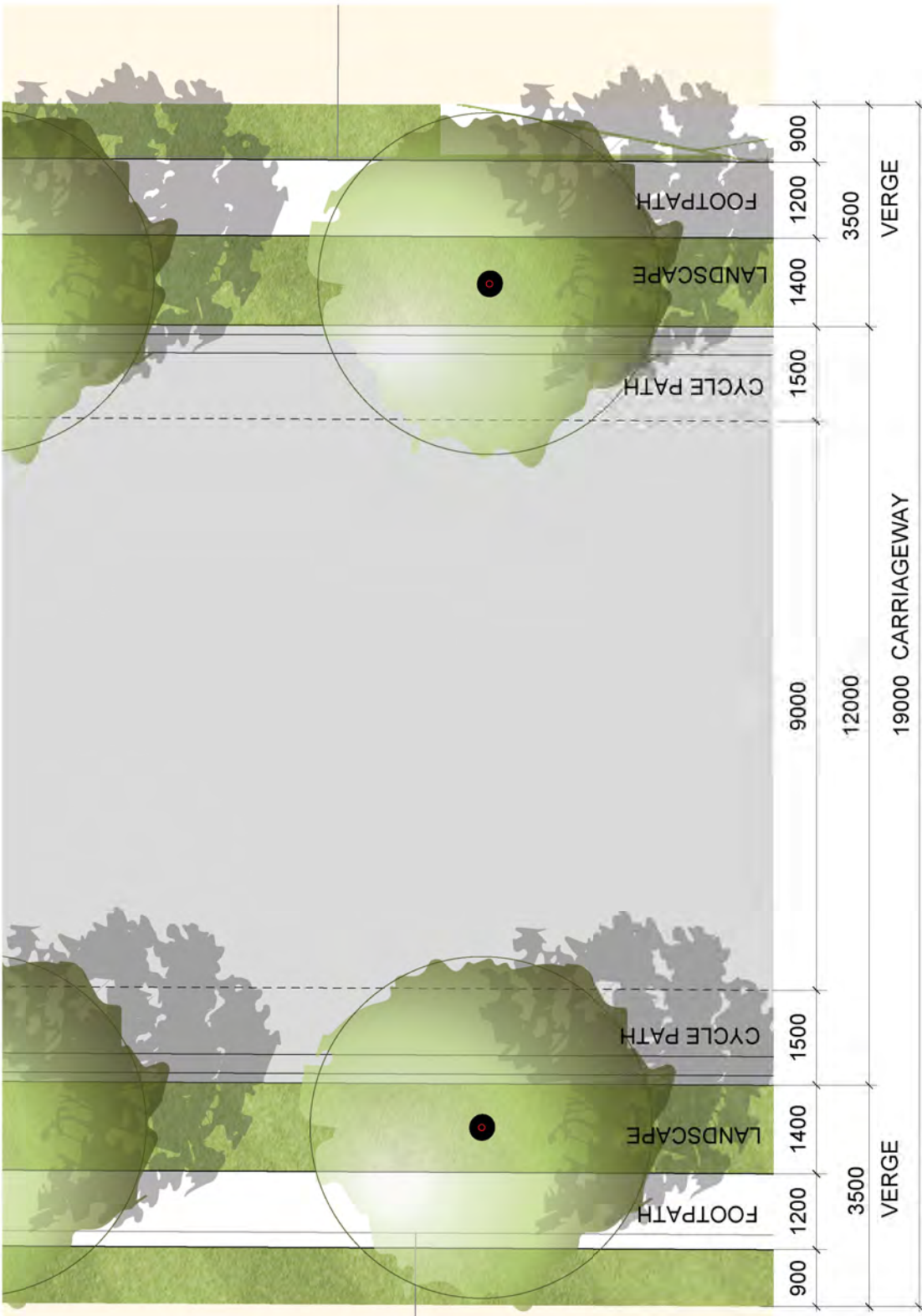
Drawn By
CK



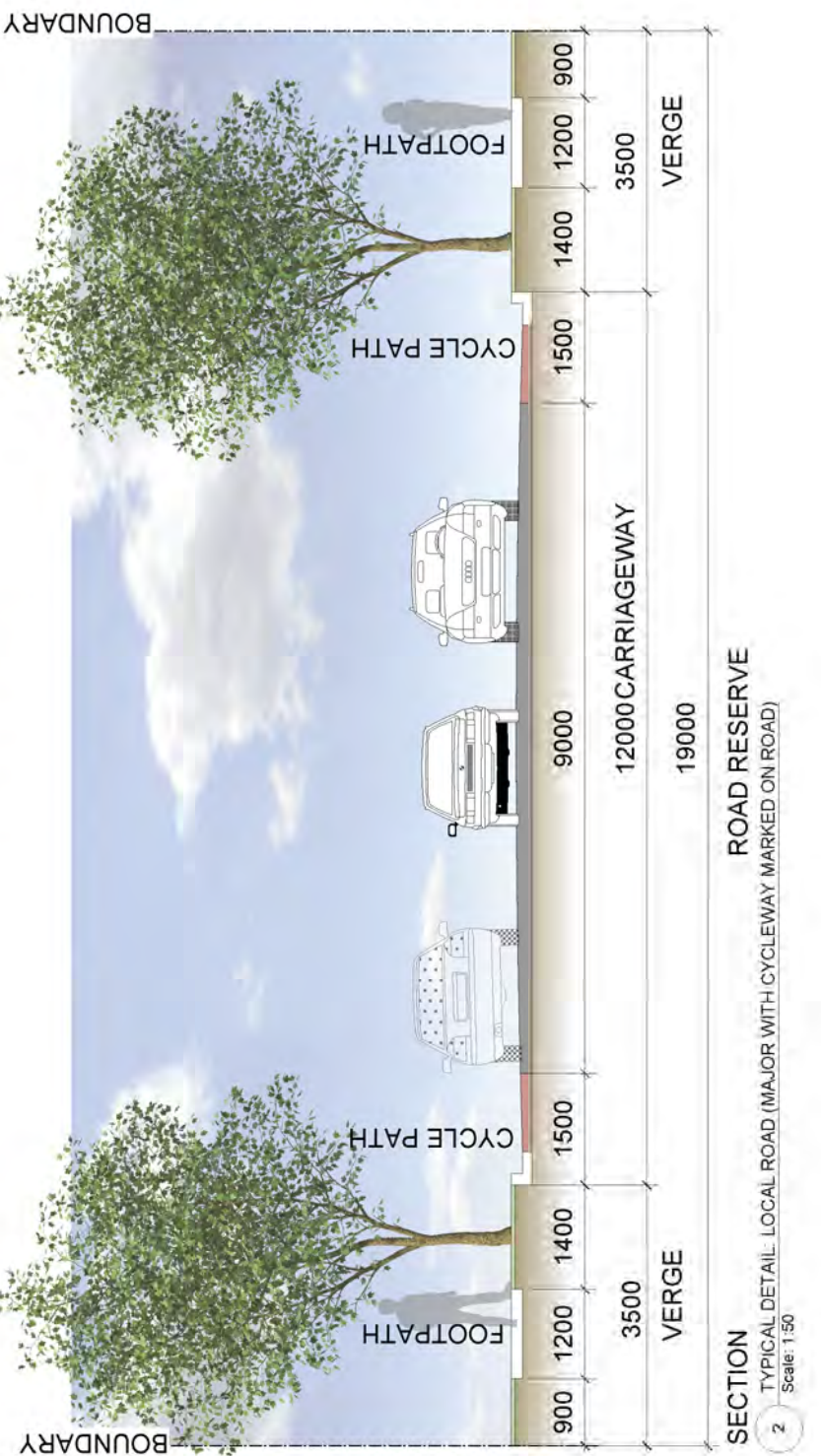
PLAN



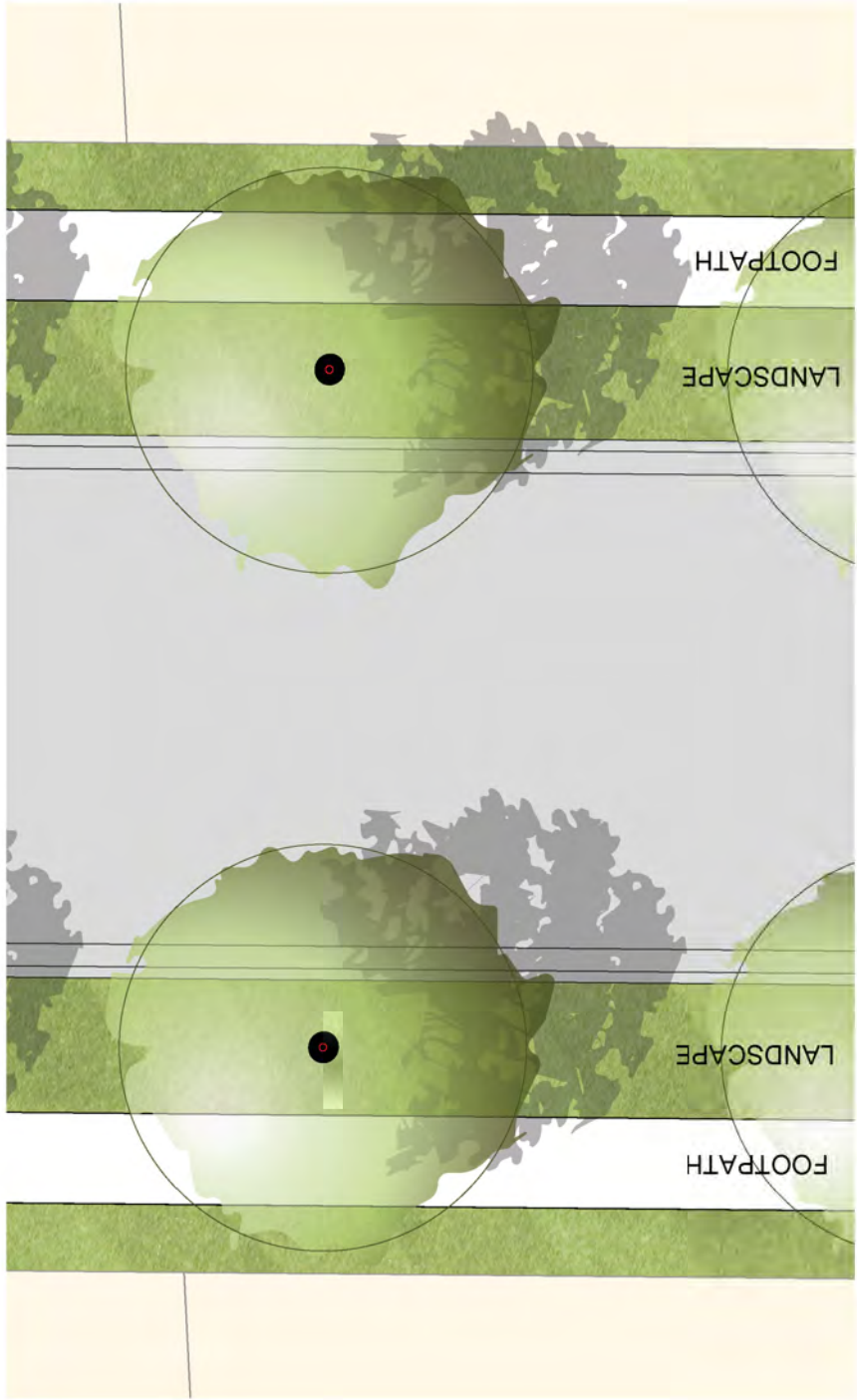
SECTION



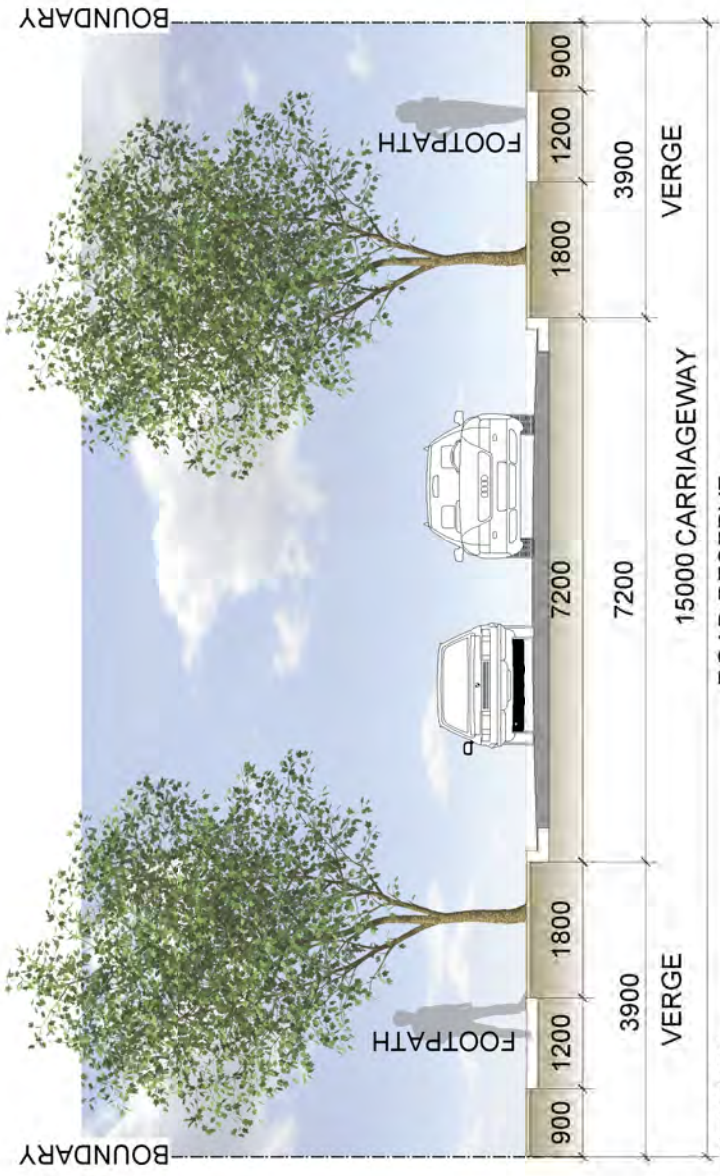
PLAN



SECTION

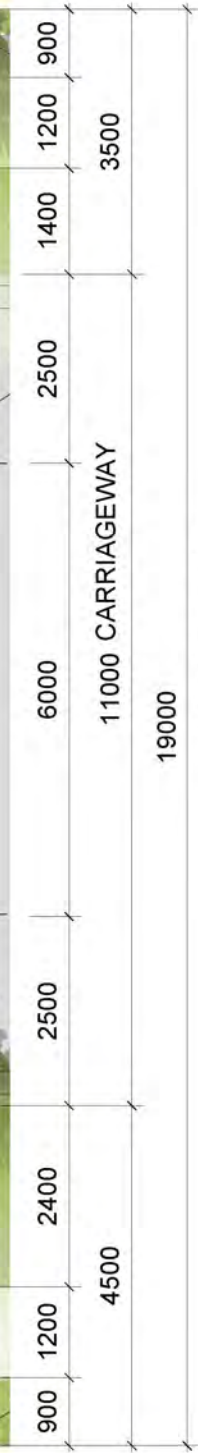
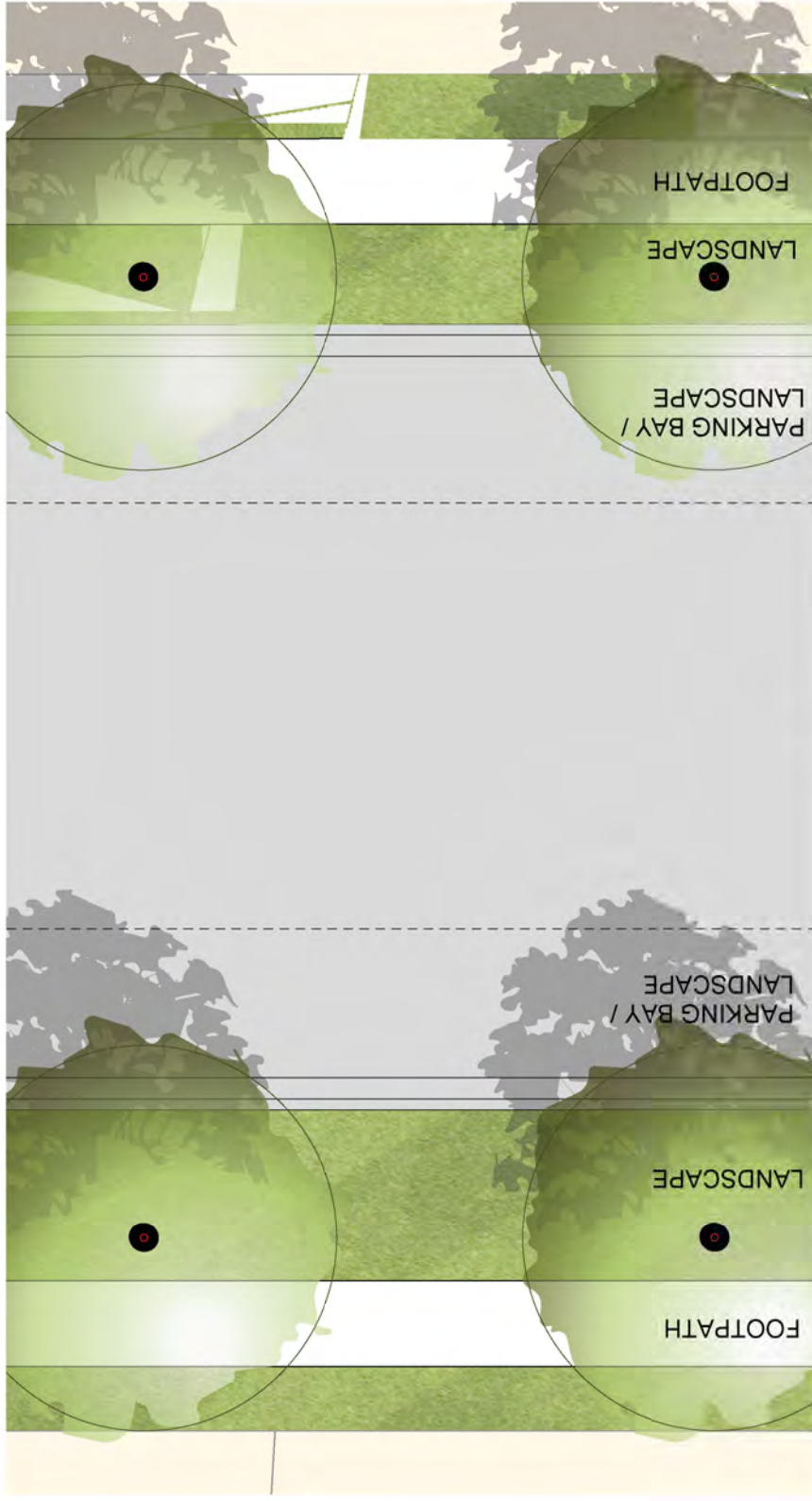


PLAN

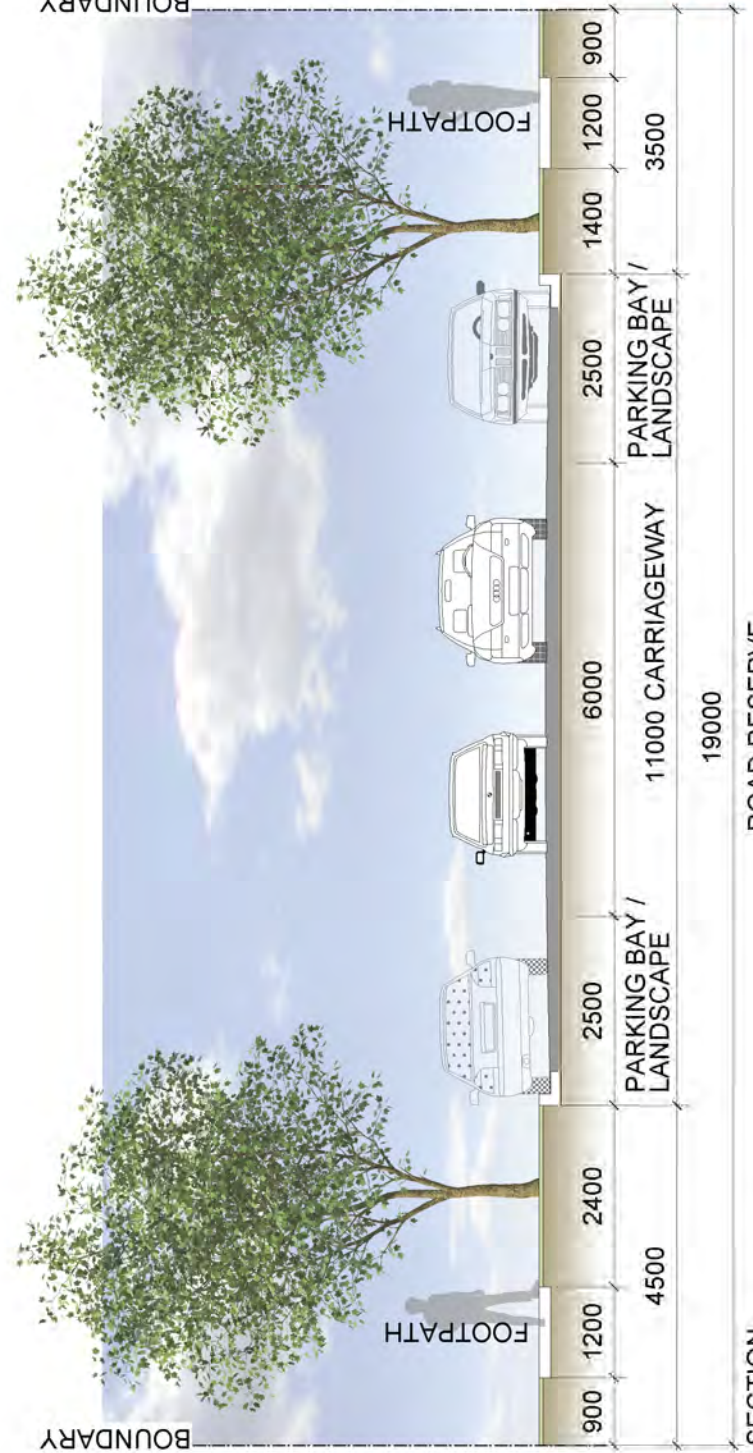


SECTION

1 TYPICAL DETAIL - LOCAL ROAD (MINOR)
Scale: 1:50

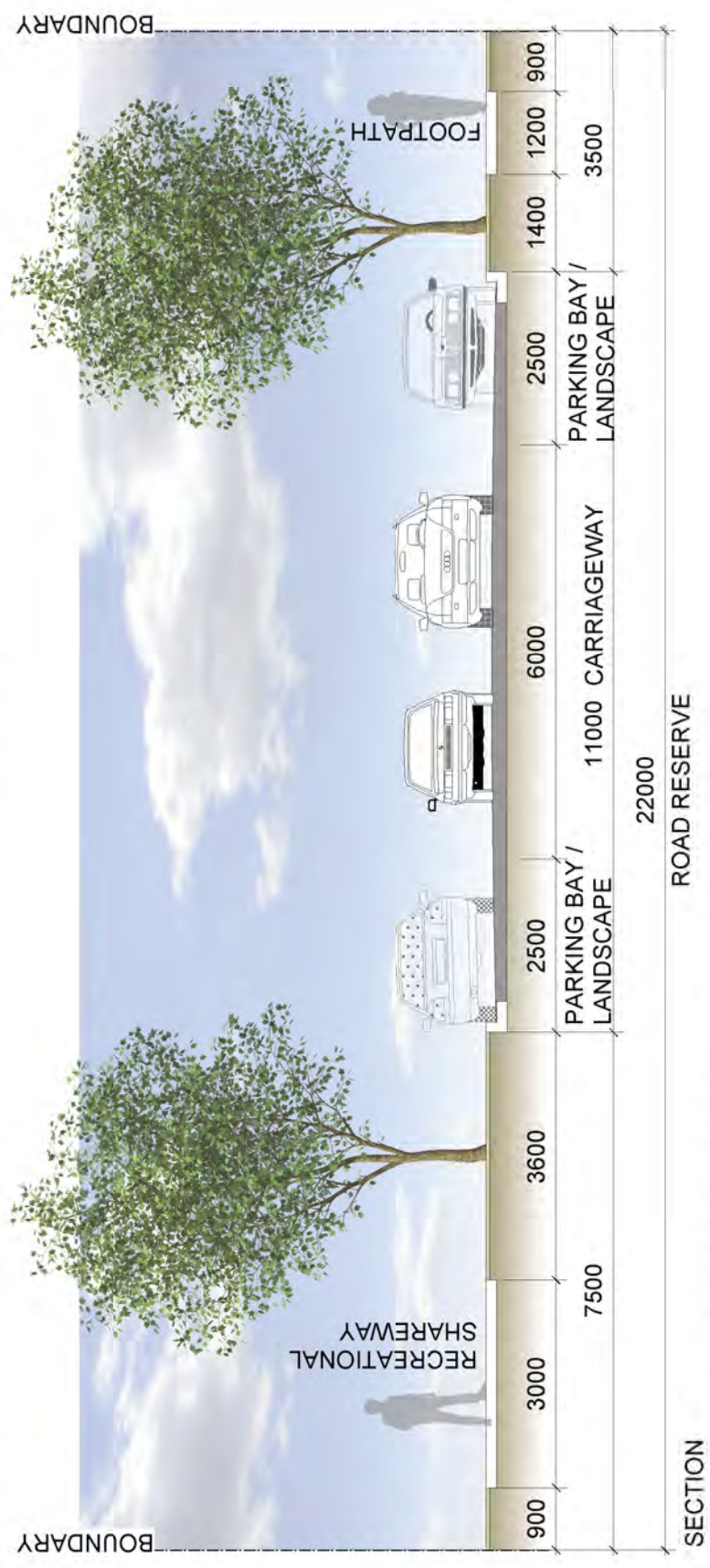
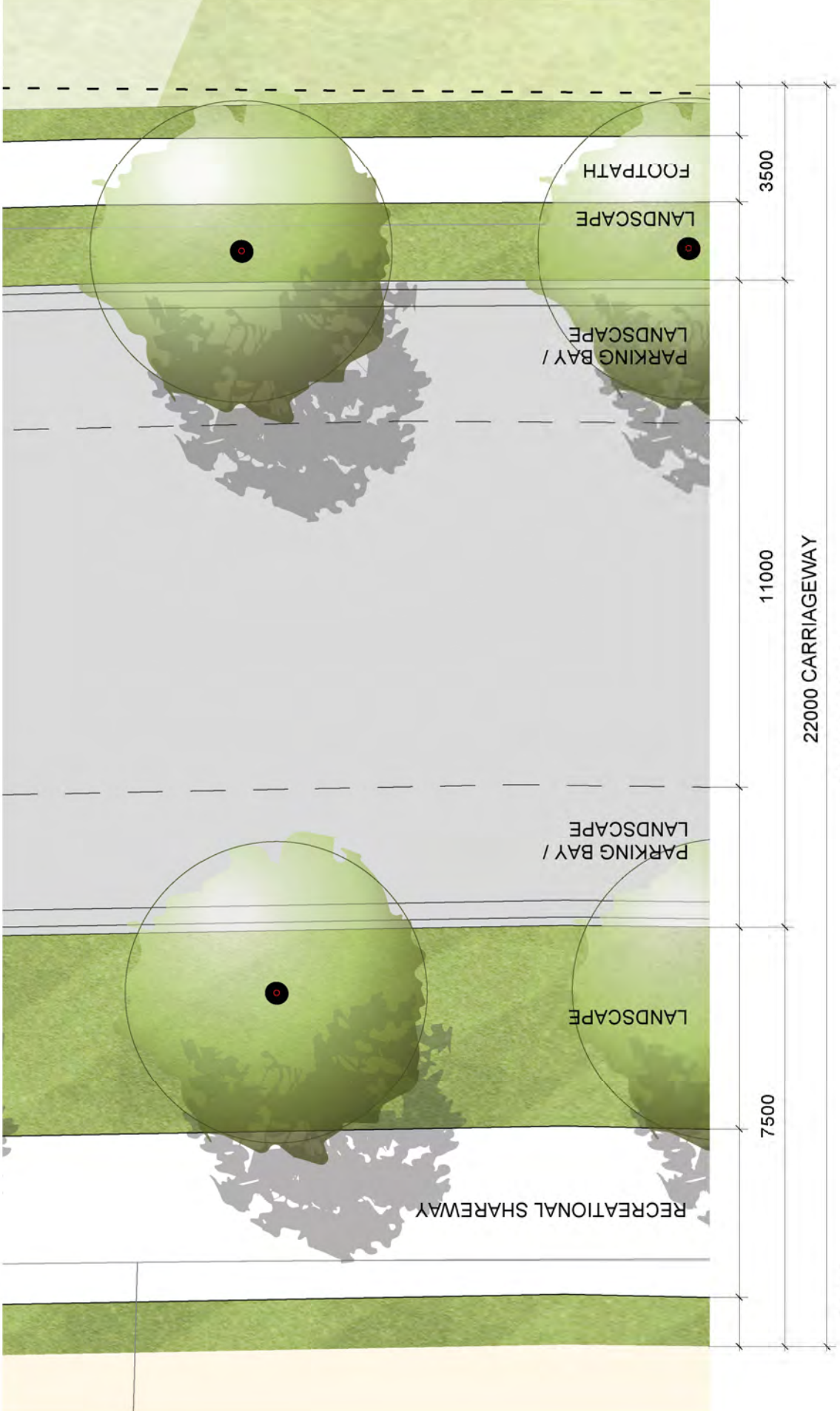


PLAN

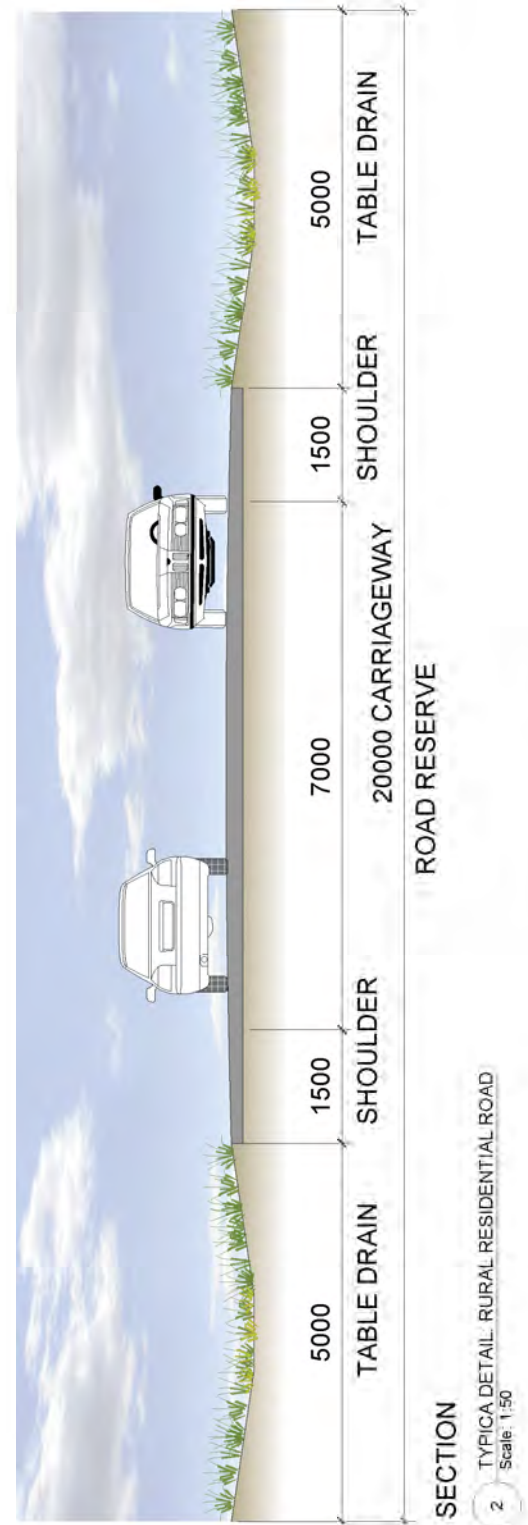
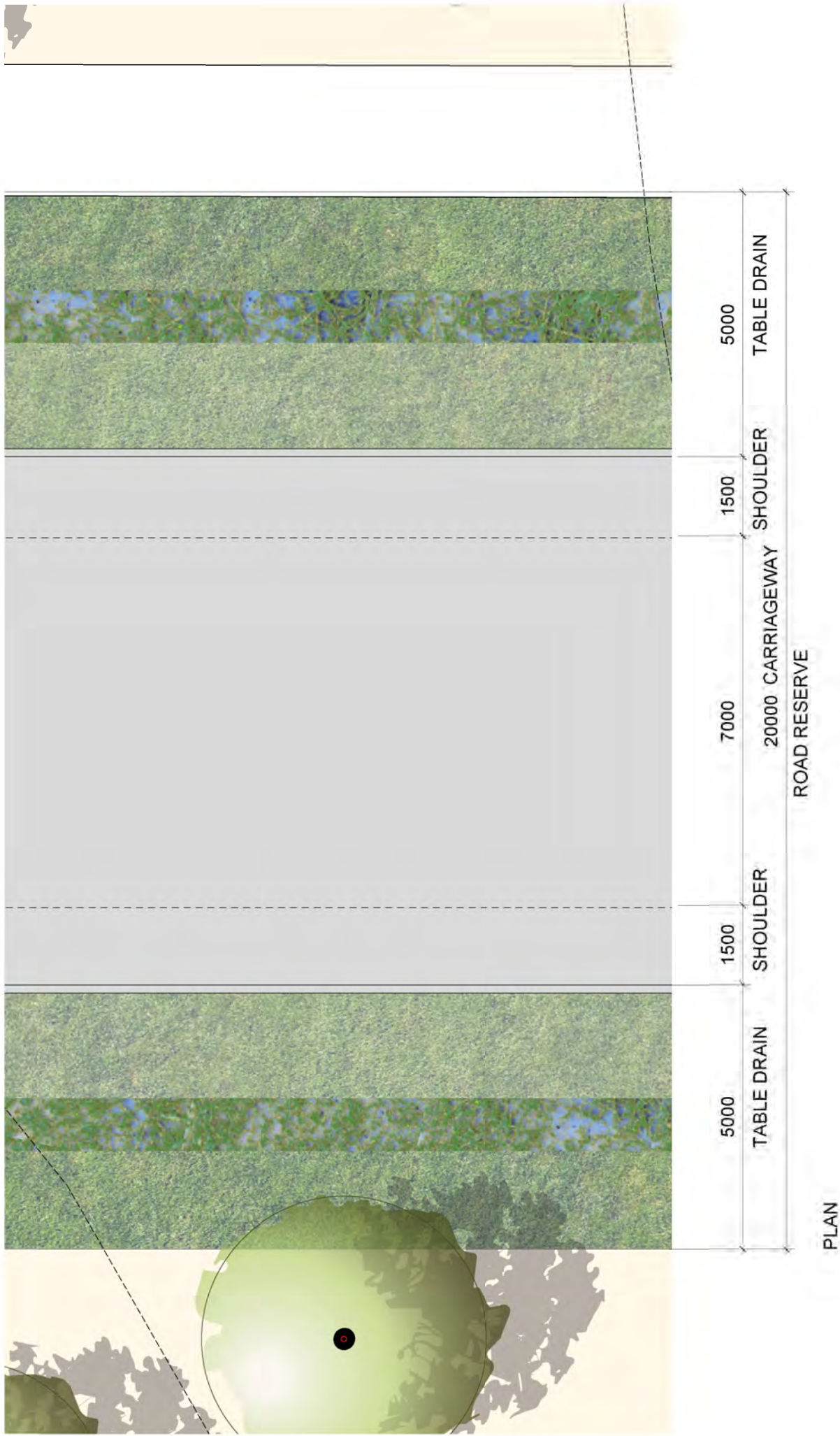


SECTION

2 TYPICAL DETAIL - OPEN SPACE ROAD WITHOUT SHAREWAY
Scale: 1:50



1 TYPICAL DETAIL - OPEN SPACE ROAD (MAJOR WITH CYCLEWAY)
Scale: 1:50





Liverpool Local Government Area
Schedule of Open Space Facilities

1. Local Park
Tree planting and landscaping
Bollard lighting
3m recreational path
Perimeter fencing / barriers
2. Maxwell Creek North Riparian Corridor
Tree planting and landscaping
Bollard lighting
3m recreational path
Perimeter fencing / barriers Civic park / playground / skate park facilities
3. Regional Park
Rehabilitate natural bushland
4. District Park
Retain parade ground
3 x International soccer fields
1 x International rugby league field
Synthetic cricket pitch
Floodlighting to 100 lux
Male and female toilets
Amenities building and change rooms
Canteen
Boardwalks / viewing platforms
Picnic and barbecue facilities
Children's playground (2-5 year-olds)
Sealed car park (40 cars)
Perimeter fencing / barriers

HASSELL

Campelltown Local Government Area
Schedule of Open Space Facilities

5. Mont St Quentin Oval
AFL field
Synthetic cricket pitch
Amenities building and change rooms
Canteen
Children's playground (2-5 year-olds)
Sealed car park (20 cars)
Picknet fence
Informal recreation
Perimeter fencing / bollards
6. Local Park Stage 1
Large adventure playground
Fitness circuit
Picnic and barbecue facilities
Interpretive plaques and sculptures
Tree planting and landscaping
Bins and water refill
General and bollard lighting
7. Local Park Adjacent School
Children's playground (2-5 year-olds)
Perimeter fencing / barriers
Tree planting and landscaping
8. Northern Riparian Corridor
Perimeter fencing / barriers
9. Maxwell Creek South Oval
2 x International rugby league fields
Synthetic cricket pitch
Floodlighting to 100 lux
Male and female toilets
Amenities building and change rooms
Canteen
Boardwalks / viewing platforms
Picnic and barbecue facilities
Children's playground (2-5 year-olds)
Sealed car park (20 cars)
Perimeter fencing / barriers
10. Maxwell Creek South Water Quality Facility
Detention basin and bioretention systems
General and bollard lighting
Picnic and barbecue facilities
Tree planting and landscaping
Perimeter fencing / barriers
11. Southern Riparian Corridor
Tree planting and landscaping
Bollard lighting
3m recreational path
Perimeter fencing / barriers
12. Local Park
Bioretention systems
Tree planting and landscaping
Bollard lighting
3m recreational path
Perimeter fencing / barriers



Legend

- | | |
|--|---------------------------|
| Existing | Proposed |
| Conservation areas | Public open space |
| Canopy vegetation | Large / small street tree |
| Creek lines | Open space trees |
| | Riparian vegetation |
| Ornamental ponds | |
| Amenities building | |
| Playgrounds | |
| Car parks | |
| Shared user paths / footpaths | |
| Boardwalks | |
| Footpaths / trails / bridges in conservation areas | |
| Primary cycleway connections | |



Client
Landcom

Project
Edmondson Park South

Drawing
Landscape Concept Plan

Drawing No

Project No
AX002910

Date
26/08/2010

Scale
1 : 10 000 @ A3

Drawn By
LA

Australia

Adelaide

HASELL
Level 5
70 Hindmarsh Square
Adelaide SA
Australia 5000
T +61 8 8203 5222
F +61 8 8203 5200
E adelaide@hassell.com.au

Brisbane

HASELL
36 Warry Street
Fortitude Valley QLD
Australia 4006
T +61 7 3914 4000
F +61 7 3914 4100
E brisbane@hassell.com.au

Melbourne

HASELL
61 Little Collins Street
Melbourne VIC
Australia 3000
T +61 3 8102 3000
F +61 3 9654 1422
E melbourne@hassell.com.au

Perth

HASELL
Podium Level, Central Park
152 – 158 St Georges Terrace
Perth WA
Australia 6000
T +61 8 6477 6000
F +61 8 9322 2330
E perth@hassell.com.au

Sydney

HASELL
Level 2
88 Cumberland Street
Sydney NSW
Australia 2000
T +61 2 9101 2000
F +61 2 9101 2100
E sydney@hassell.com.au

PR China

Beijing

HASELL
15F, Block A
Tian Yuan Gang Center
2 Bing, Dong San Huan Bei Road
ChaoYang District
Beijing 100027 PR China
T +8610 5126 6908
F +8610 8441 7266
E beijing@hassell.com.cn

Chongqing

HASELL
28F, International Trade Centre
38 Qing Nian Road
Yu Zhong District
Chongqing 400010 PR China
T +8623 6310 6888
F +8623 6310 6007
E chongqing@hassell.com.cn

Shanghai

HASELL
Building 8 Xing Fu Ma Tou
1029 South Zhongshan Road
Huangpu District
Shanghai 200011 PR China
T +8621 6887 8777
F +8621 5840 6281
E shanghai@hassell.com.cn

Shenzhen

HASELL
37F, Landmark
4028 Jintian Road
Futian District
Shenzhen 518035 PR China
T +86755 2381 1838
F +86755 2381 1832
E shenzhen@hassell.com.cn

Hong Kong SAR

Hong Kong

HASELL
22F, Manulife Tower
169 Electric Road
North Point Hong Kong
T +852 2552 9098
F +852 2580 1339
E hongkong@hassell.com.hk

Singapore

Singapore

HASELL
17A Stanley Street
068736 Singapore
T +65 6224 4688
E singapore@hassell.com.sg

Thailand

Bangkok

HASELL
18F K Tower
209 Sukhumvit Soi 21
Klongtoey-Nua Wattana
Bangkok 10110 Thailand
T +66 2207 8999
F +66 2207 8998
E bangkok@hassell.co.th