

# Modification of Infrastructure Approval

## Section 5.25 of the *Environmental Planning and Assessment Act 1979*

As delegate for the Minister for Planning, under delegation executed on 26 April 2021, I approve the modification of the State significant infrastructure approval referred to in Schedule 1, subject to the conditions outlined in Schedule 2.



Sally Munk  
**A/Team Leader**  
**Industry Assessments**

Sydney

21 January 2022

---

### SCHEDULE 1

#### Infrastructure Approval

**Infrastructure Approval:** 10\_0108 granted by the Planning Assessment Commission on 30 October 2012

**For the following:** Shoalhaven Starches Gas Pipeline Project

#### Modification 1

**Modification Application:** 10\_0108-Mod-1

Modification to pipeline diameter, gas pressure reduction facility and associated changes

**Applicant:** Cowman Stoddart Pty Ltd

**Approval Authority:** Minister for Planning

**The Land:** Land covering the entire pipeline route running east south-east from existing Eastern Gas Pipeline at Pestells Lane, Meroo Meadow to the Shoalhaven Starches factor site at Bolong Road, Bomaderry (see Appendix A)

---

## SCHEDULE 2

This approval is modified as follows:

### In the definitions

1. In the definition 'Project', immediately after the word EA, insert the words 'and as modified by the Modification Assessments'.
2. Insert the following definition in alphabetical order:

AEP	Annual Exceedance Probability
FPL	Flood Planning Level
Modification Assessments	The document assessing the environmental impact of a proposed modification of this approval and any other information submitted with the following modification applications made under the EP&A Act:  a) 10_0108-Mod-1 – Modification Report, prepared by Cowman Stoddart Pty Ltd, dated 21 July 2021, as amended by the Response to the Request for Additional Information, dated 9 November 2021 and Response to Request for Additional Information From DPIE – Water, dated, 13 January 2022

### In Schedule 2: Administrative Conditions

3. In Condition 2(e), delete the period and insert '; and'
4. Insert new Condition A2(f) as follows:  
  
(f) modification assessments.

### In Schedule 3: Specific Environmental Conditions

5. In Condition 2, after the words 'studies/plans' insert the words 'for the project'.
6. In Condition 2, after the words 'studies). Construction' insert the words 'of the project'.
7. In Condition 3, after the words 'Prior to commissioning' insert the words 'of the project'
8. Insert new Condition 19A and associated sub-heading immediately after Condition 19 as follows:

#### **Flood Management**

- 19A. Prior to the issue of a Construction Certificate, a professional engineer, (as defined in the National Construction Code) must submit to the satisfaction of the Certifier, certification that the following items have been detailed on the construction drawings of the Gas Pressure Reduction Facility:
- a) any proportion of the structure below the Flood Planning Level (FPL) must be built from flood compatible materials;
  - b) all electrical installations must be constructed above the FPL or be able to be isolated prior to a flood event;
  - c) the location of all hazardous substances are located at or above the 1% AEP Flood Level;
  - d) a flood evacuation plan must be prepared to ensure permanent, fail-safe, maintenance-free measures are incorporated in the development to ensure that the timely, orderly and safe evacuation; and
  - e) can withstand forces of floodwaters including debris and buoyancy forces up to a 1% Annual Exceedance Probability (AEP) flood event.

### **In the Appendices**

9. Delete Appendix A – Site Plans and replace with new Appendix A – Site Plans, as shown in Appendix 1 of this instrument.
10. In Appendix B, in Action 15.3, after the words 'drainage structures', insert the following words 'Underboring of the Princes Highway shall ensure that the pipe is located a minimum of 1.5 m below the open drainage structure/channel on the western side of the roadway.'

# APPENDIX 1

## APPENDIX A – SITE PLANS

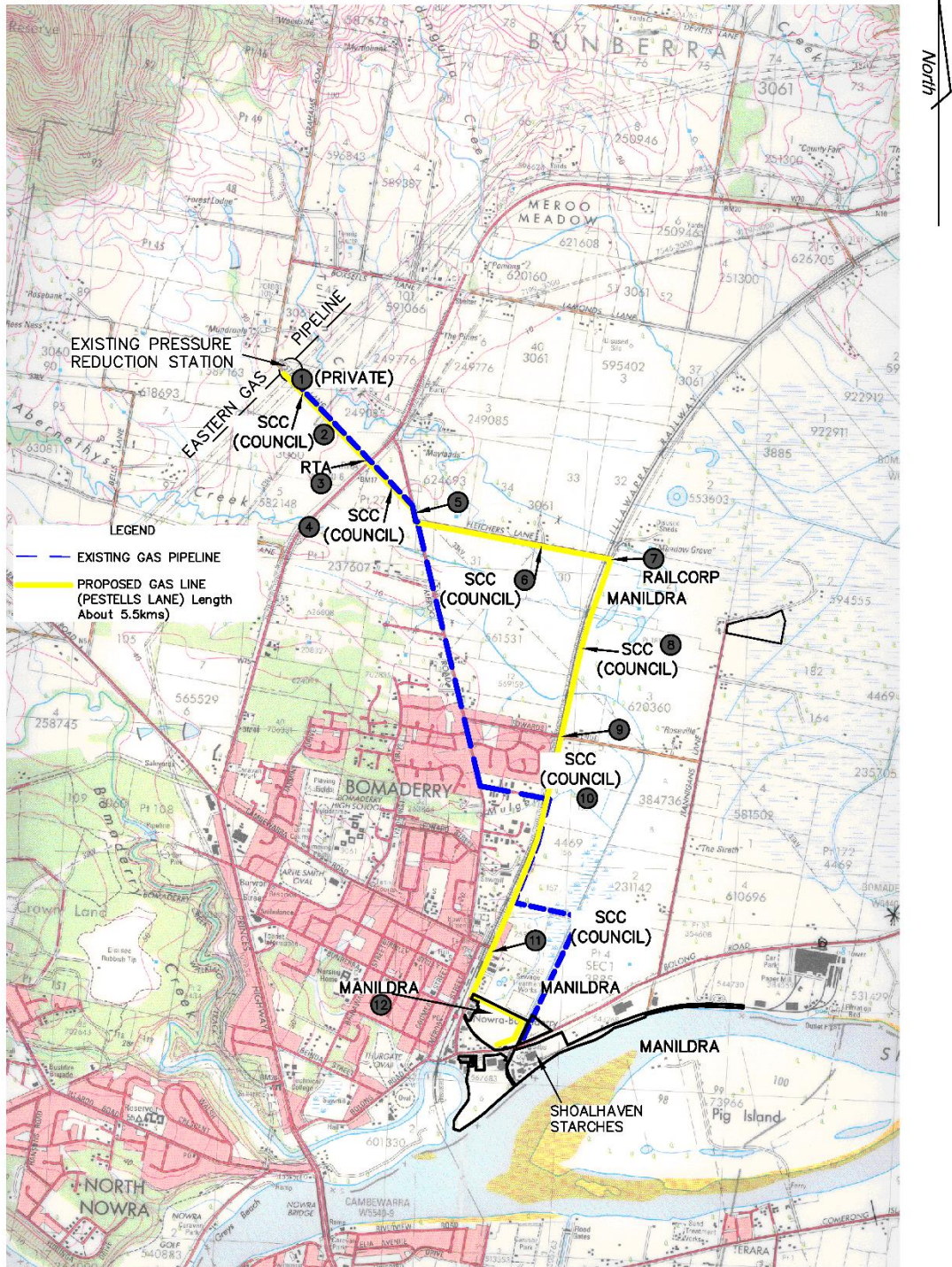
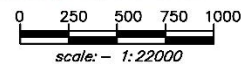


FIGURE 3

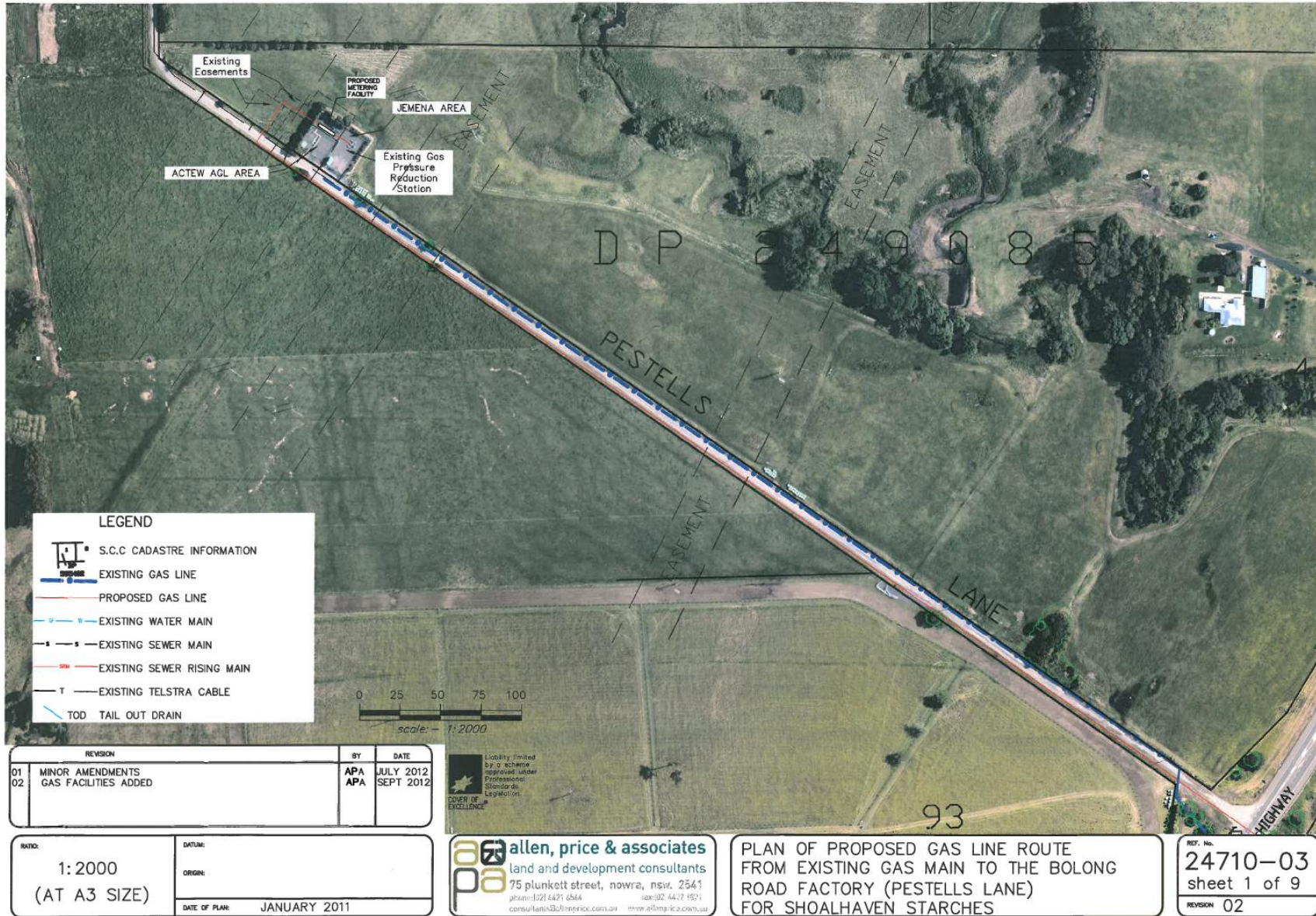


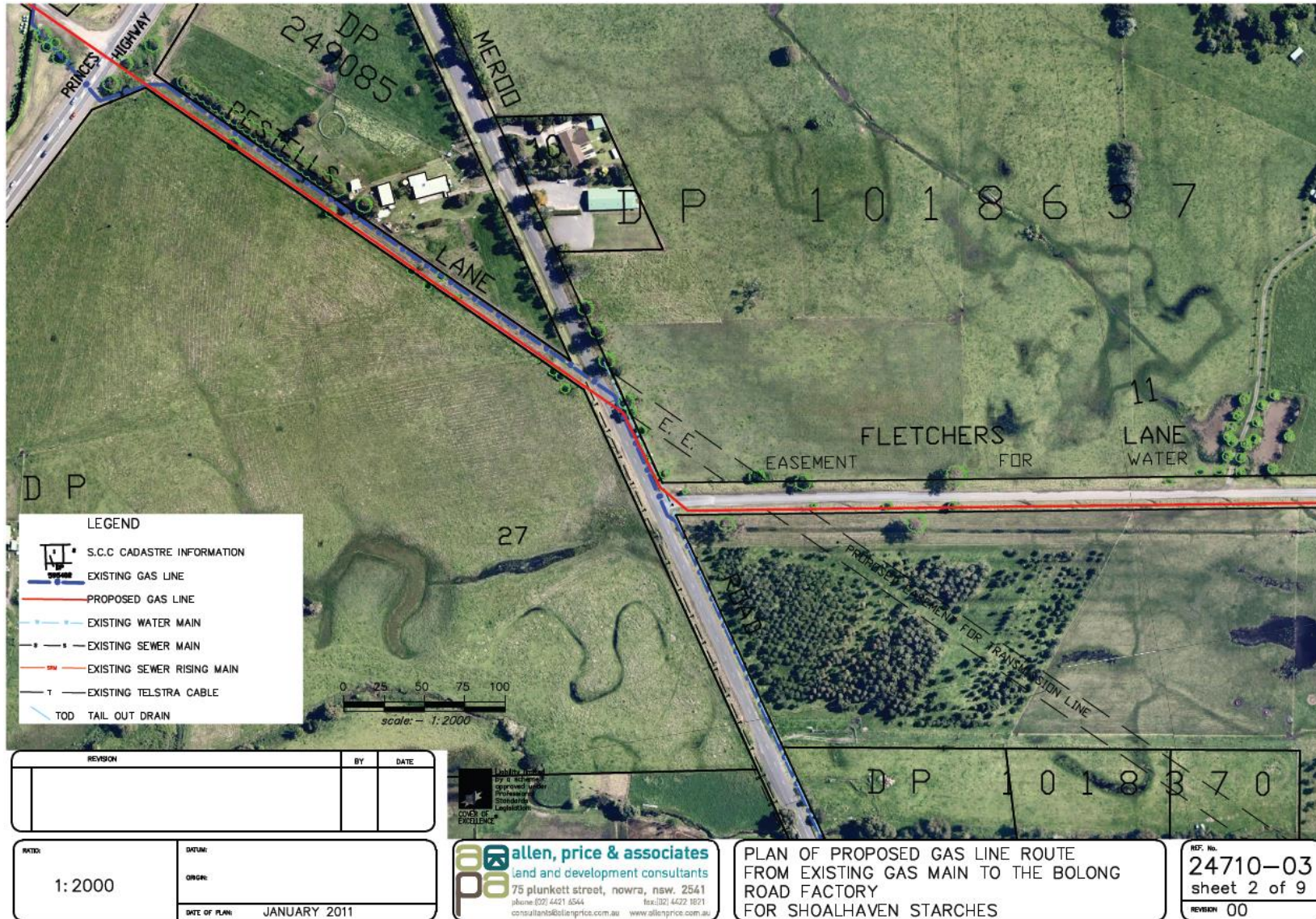
SKETCH PLAN SHOWING EXISTING AND PROPOSED GAS LINE ROUTE FROM EXISTING PRESSURE REDUCTION STATION AT PESTELLS LANE TO BOLONG ROAD FACTORY FOR THE MANILDRA GROUP

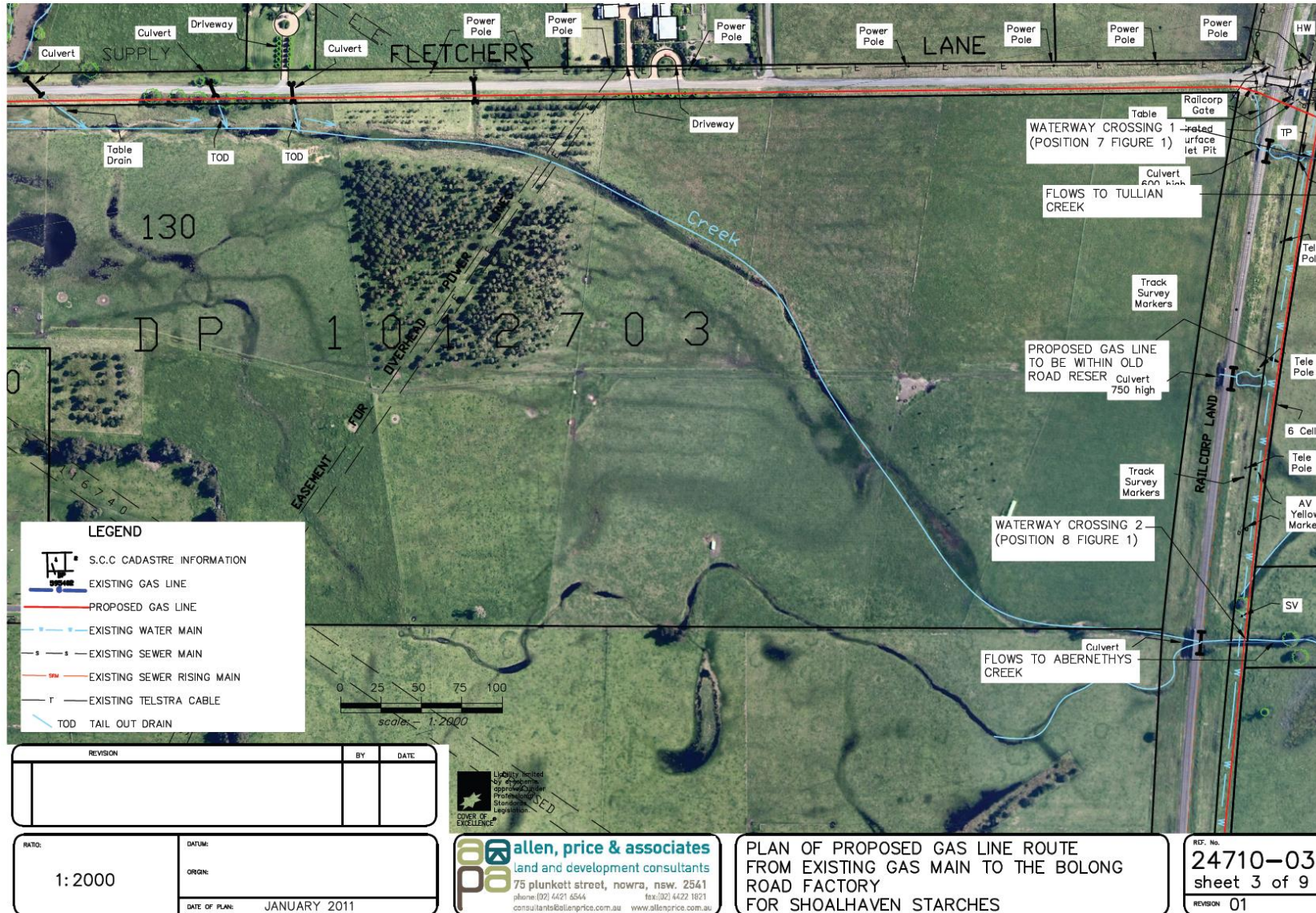
CAD FILE: N24710-01K

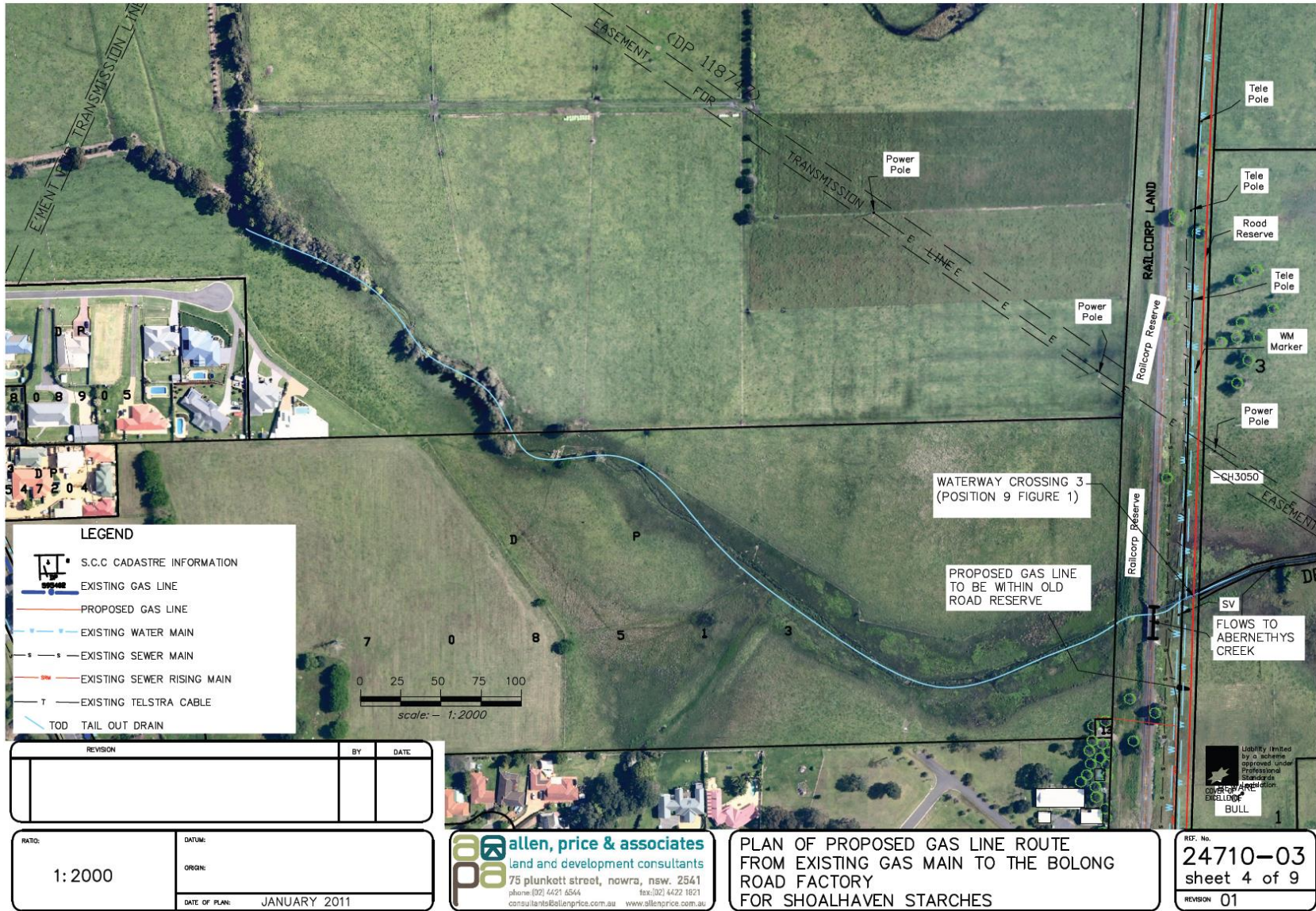
A3 SIZE RATIO 1: 22,000	 <p><b>allen price &amp; scarratts</b> land and development consultants</p>
DATE: 30.11.2021	REF: 24710-01K

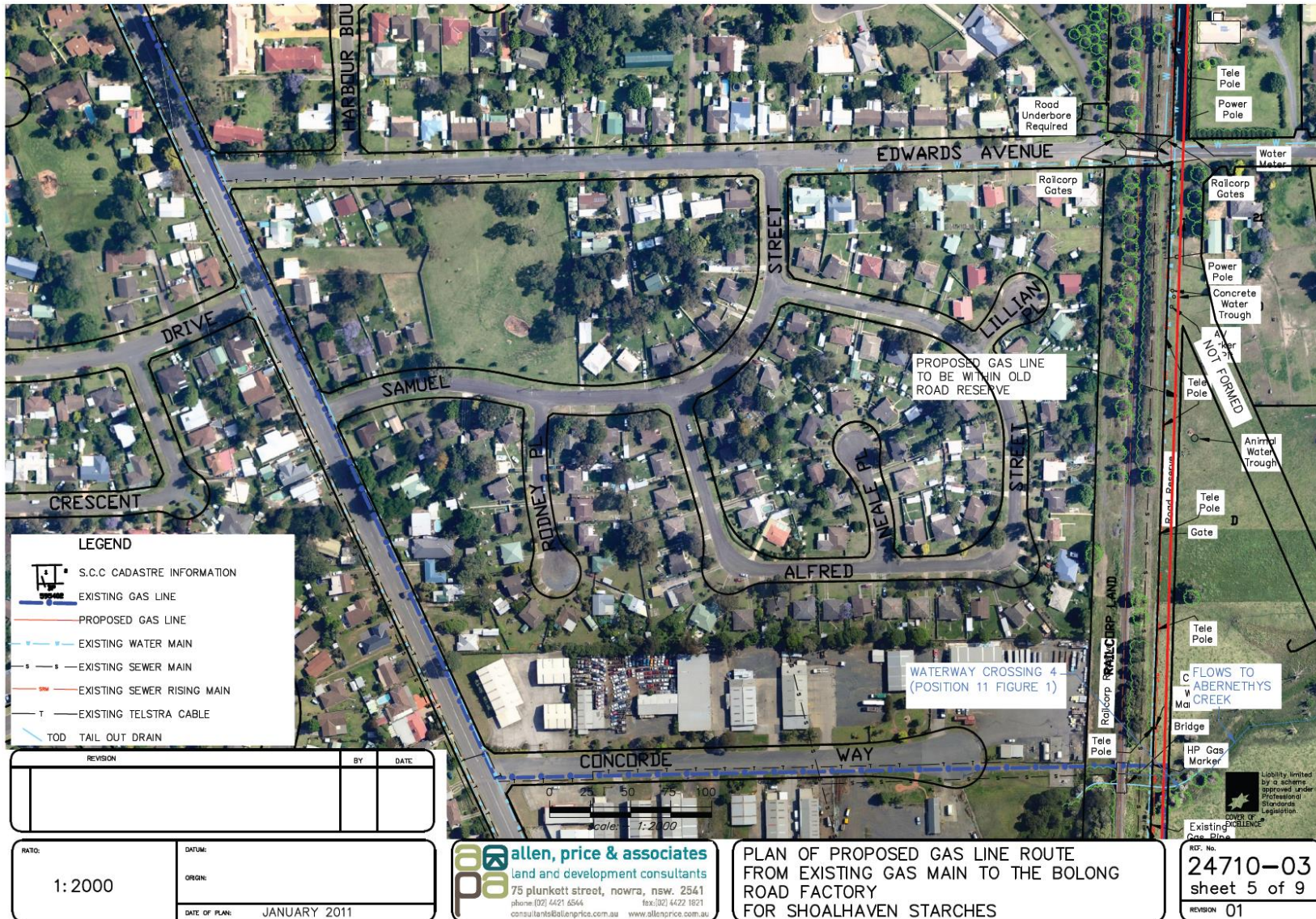
<p>CONSULTING SURVEYORS NATIONAL</p> <p><b>PROFESSIONAL STANDARDS SCHEME</b></p> <p>Liability limited by a scheme approved under Professional Standards Legislation</p>
---



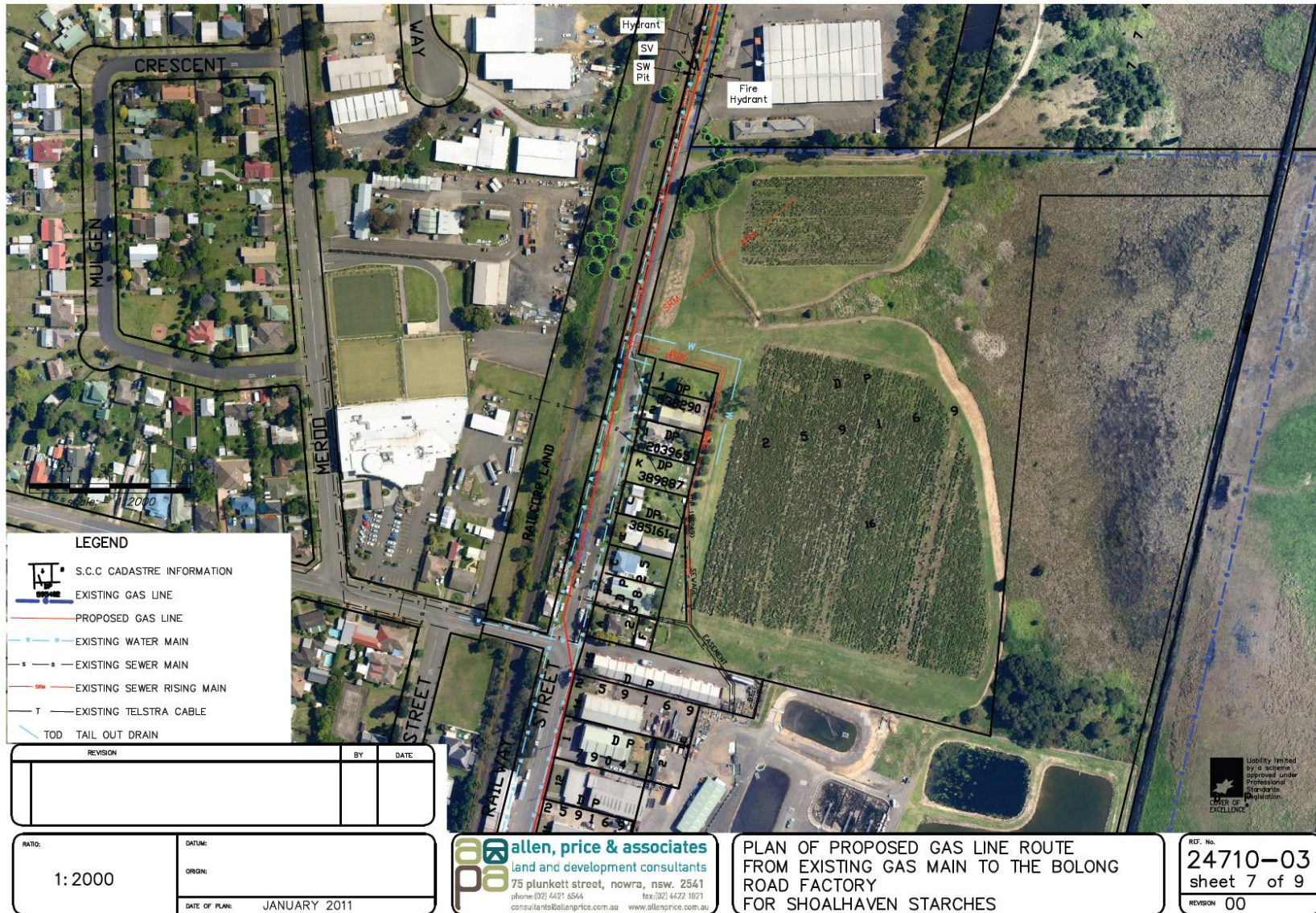












<b>Project No.</b>	<b>Drawing No.</b>	<b>Revision</b>	<b>Date</b>	<b>Drawing Title</b>
<b>10_0108</b>	<b>MN7297-001</b>	<b>P18</b>	<b>17/12/2021</b>	<b>Gas Facility Mod 1 Overall Site Plan</b>
<b>10_0108</b>	<b>MN7297-002</b>	<b>P14</b>	<b>17/12/2021</b>	<b>Gas Facility Mod 1 Site Plan</b>
<b>7208A</b>	<b>MN7297-004</b>	<b>P09</b>	<b>17/12/2021</b>	<b>Gas Facility Mod 1 Over All Plant Plan</b>
<b>P3792</b>	<b>Q12982Q-G001A</b>	<b>2</b>	<b>28/10/2021</b>	<b>Proposed Layout Gas Pressure Let Down Station</b>