

	MOD 1.
	APPROVED PLANT YET TO BE CONSTRUCTED.
	PROPOSED CO-GEN PLANT. MOD 23.

REV	ZONE	DETAILS	DRN	DATE	CHKD	APPD
P17	H5	Fence realigned. Lot 21 now proposed.	P.C.	3-11-21	B.H.	
P16	H5	Fence realigned.	P.C.	2-11-21	B.H.	
P15	ALL	Station refined, lot boundary/easements defined. Station raised 500mm.	P.C.	27/10/21	B.H.	
P14	I4	Low pressure gas line removed. Now Mod 1.	P.C.	27/9/21	B.H.	
P13	I4	Revised low pressure gas line.	P.C.	7/9/21	B.H.	
P12	I4	Revised P.R.S. footprint.	P.C.	3/9/21	B.H.	

Commitment to Excellence

GEM OF THE WEST

MANILDRA GROUP
100% AUSTRALIAN

PC Drafting
0439 436508

P.C.	DATE
CHKD B.H.	08/12/20
APPD	DATE
	SCALE 1:1000

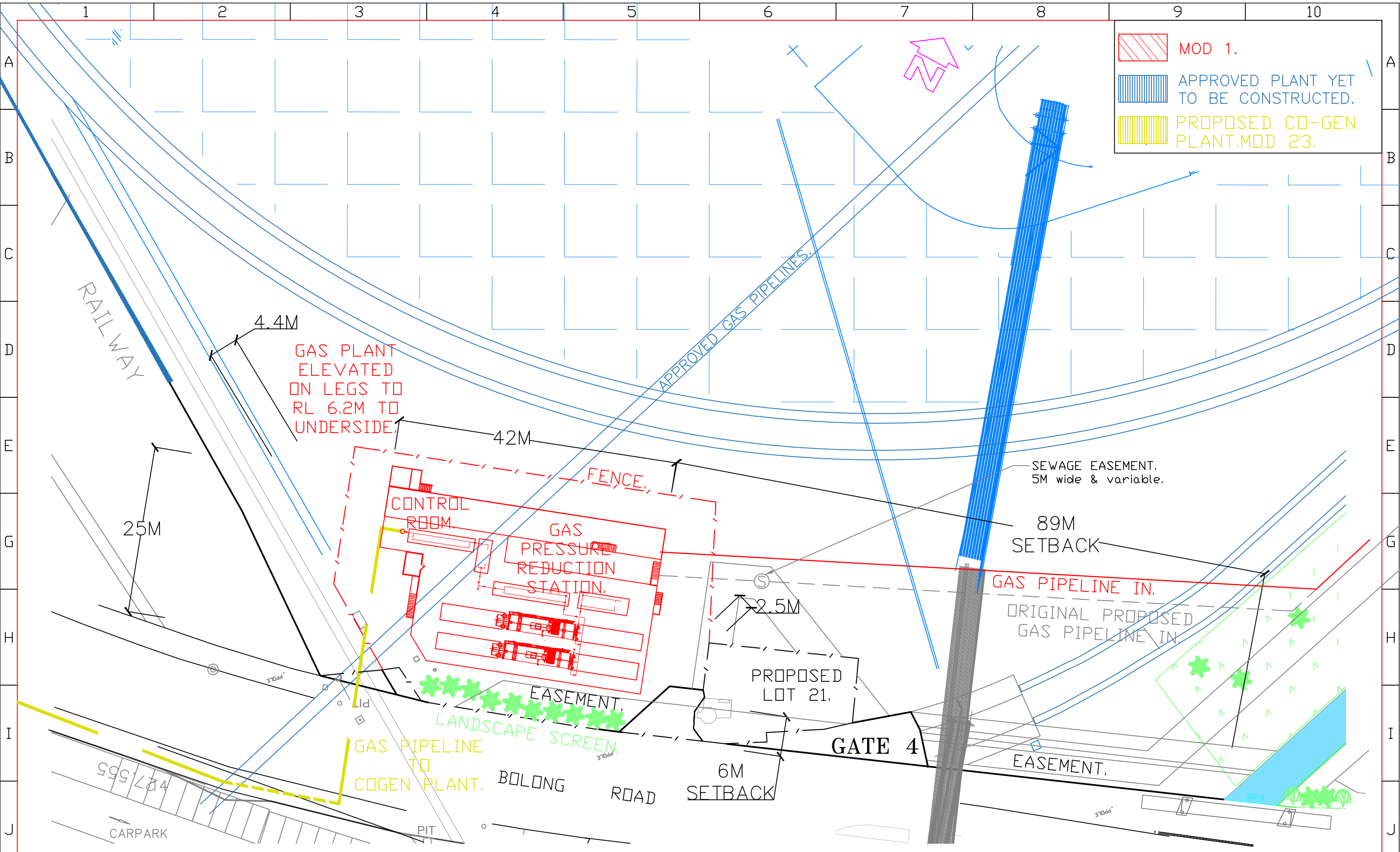
SHOALHAVEN STARCHES, BOMADERRY.

DWG TITLE: GAS FACILITY, MOD 1. OVERALL SITE PLAN.

PROJECT No. 10_0108

DWG No. MN7297-001


SHT SIZE	A3
REV.	P17




	MOD 1.
	APPROVED PLANT YET TO BE CONSTRUCTED.
	PROPOSED CO-GEN PLANT, MOD 23.

P13	G5	Fence realigned. Lot 21 now proposed.	P.C.	3-11-21	B.H.	
P12	G5	Fence realigned.	P.C.	2-11-21	B.H.	
P11	ALL	Station refined, lot boundary/easements defined. Station raised 500mm.	P.C.	27/10/21	B.H.	
P10	G4	Low pres. gas line removed. Now Mod 1.	P.C.	27/9/21	B.H.	
P09	G8	Gas in pipeline relocated north.	P.C.	23/8/21	B.H.	
P08	G4	Was 20m wide.	P.C.	12/7/21	B.H.	
P07	ALL	Landscape screen shown.	P.C.	29/6/21	B.H.	
REV	ZONE	DETAILS	DRN	DATE	CHKD	APPD

Commitment to Excellence



MANILDRA GROUP
100% AUSTRALIAN



P.C.	DATE	DWG TITLE	A3
CHKD B.H.	08/12/20	GAS FACILITY, MOD 1. SITE PLAN.	
APPD	DATE	PROJECT No.	REV. P13
	SCALE 1:500	10_0108 MN7297-002	

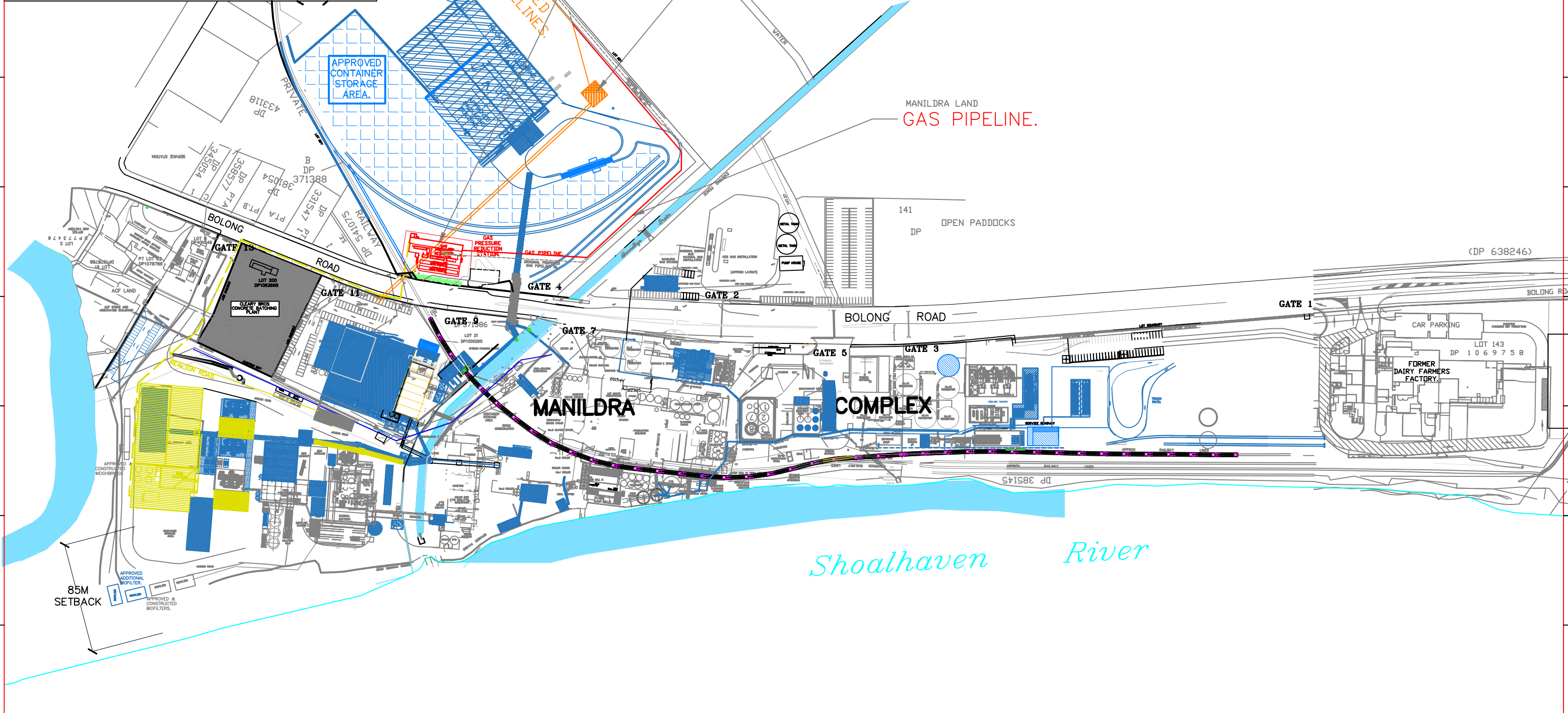
EXISTING APPROVED PLANT.

PROPOSED CO-GEN PLANT, MOD 23.

APPROVED PLANT YET TO BE CONSTRUCTED.

APPROVED GAS PRESSURE REDUCTION STATION & GAS PIPELINES.

PROPOSED RELOCATION OF THE GAS PRESSURE REDUCTION STATION AND GAS PIPELINE, MOD 1.



REV	ZONE	DESCRIPTION	DRN	DATE	CHKD	APPD
P08	E3	Fence realigned.	P.C.	2-11-21	B.H.	
P07	E3	Station refined.	P.C.	27-10-21	B.H.	
P06	G4	Low pressure pipeline removed. Mod 1 added.	P.C.	27-9-21	B.H.	
P05	D5	Pipeline relocated out of easement.	P.C.	24-8-21	B.H.	
P04	ALL	Pipeline relocated.	P.C.	24-8-21	B.H.	
P03	ALL	Pipeline reworked.	P.C.	12-7-21	B.H.	
P02	ALL	Wording amended.	P.C.	29-6-21	B.H.	
P01	ALL	Gas line rerouted added.	P.C.	29-6-21	B.H.	



MANILDRA GROUP
100% AUSTRALIAN



THIS DRAWING IS A CONFIDENTIAL COMMUNICATION OF MANILDRA GROUP. TO TAKE A COPY OR DISCLOSE TO A THIRD PARTY WITHOUT WRITTEN CONSENT CONSTITUTES AS AN INFRINGEMENT OF THE COPYRIGHT.

DRAWN	PC	DATE	26-02-21
DESIGNED	PW	DATE	
CHKD	SR	DATE	
APPD	BH	DATE	
SCALE	1:3000		

SITE	MANILDRA-SHOALHAVEN STARCHES PTY LTD
JOB TITLE	NOWRA PLANT.
DWG TITLE	GAS FACILITY, MOD 1, OVER ALL PLANT PLAN.
PROJECT No.	7208A
DWG No.	MN7297-004

SHT SIZE	A3
SHEET	
OF	
REV.	P08

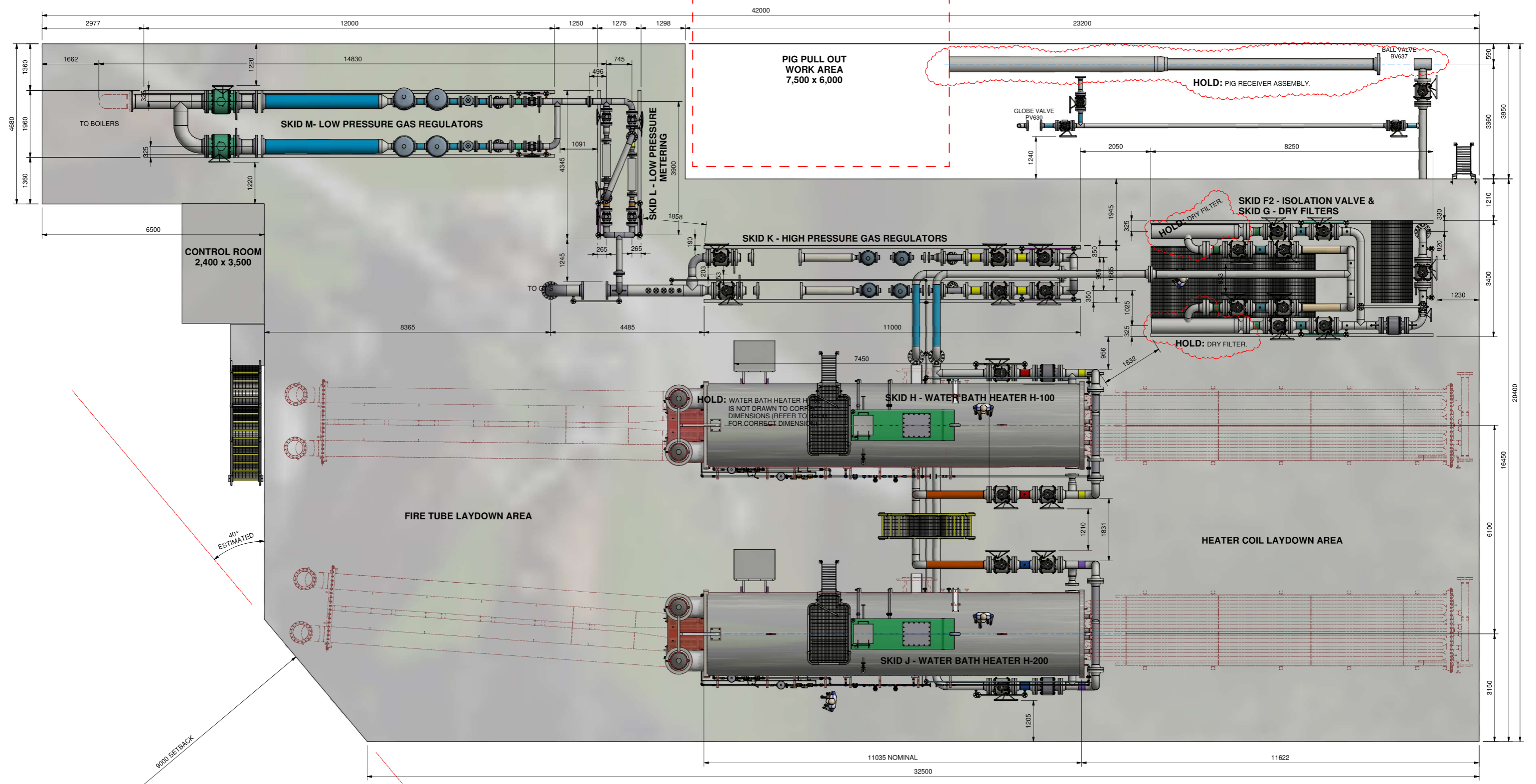
GAS LINE,
7297

PROJECT No. 10_0108

3/11/21

MOD 1.

Drawing No.	REV.	
MN7297-001	P17	OVERALL SITE PLAN.
MN7297-002	P13	SITE PLAN.
MN7297-004	P08	OVERALL PLANT PLAN.(7208A)
Q12982Q-G001	B	GAS P.R. STATION GA.
MN7208-000	P06	FLOW.



PLAN VIEW
SCALE 1 : 55

A1	
----	--

REV	DATE	DRAWN	CHECKED	DESCRIPTIONS	PM	PDE	EDA	EDO
2	20/10/2021	D BELL	-	REVISED & RE-ISSUED FOR APPROVAL	F.A.	-	EAS	-
1	01/10/2021	D BELL	EAS	REVISED TO 30% DESIGN REVIEW MEETING - ISSUED FOR APPROVAL	F.A.	M.G.	EAS	-
0	27/08/2021	D BELL	EAS	REVISED TO CLIENTS COMMENTS	F.A.	M.G.	EAS	-
					APPROVED			

GASCO
MELBOURNE AUSTRALIA
ACN 051 824 741 ABN 55 989 575 589
ENGINEERING DESIGN AND MANUFACTURING,
INDUSTRIAL HEATING AND PROCESS EQUIPMENT

TITLE		PLOT PLAN - ELEVATED PLATFORM	
DN300 - GAS TRANSMISSION PIPELINE		NGP-PRS SHOALHVEN STACHES BOMADERRY	
Scale	Size	Job No.	Dwg No.
1 : 55	A1	P3792	Q12982-G001A

