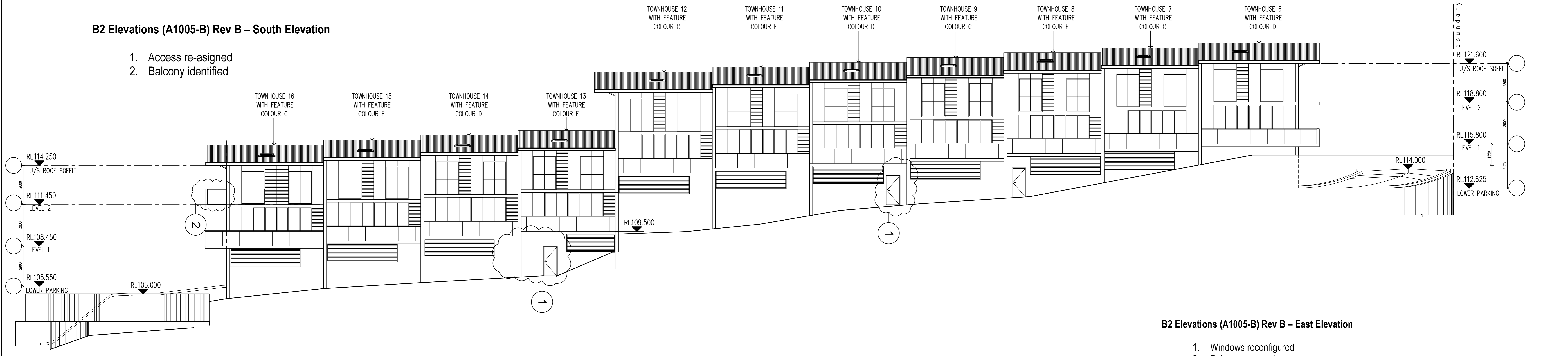


1 BUILDING 2 - NORTH ELEVATION
SCALE: 1:100

B2 Elevations (A1005-B) Rev B - South Elevation

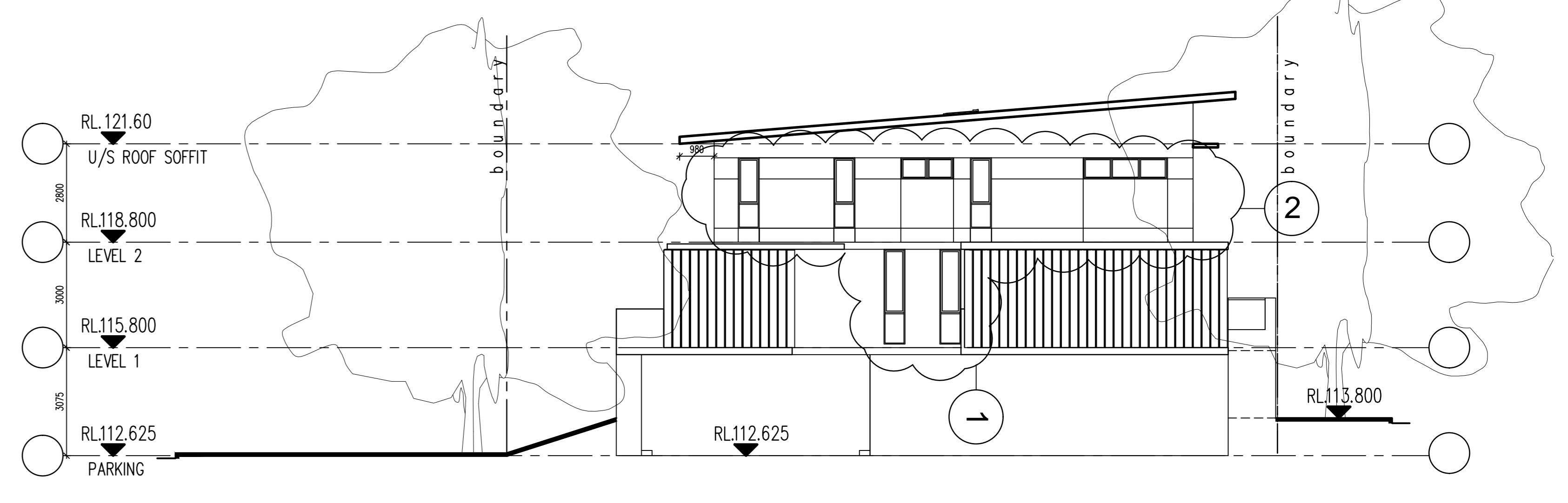
1. Access re-assigned
2. Balcony identified



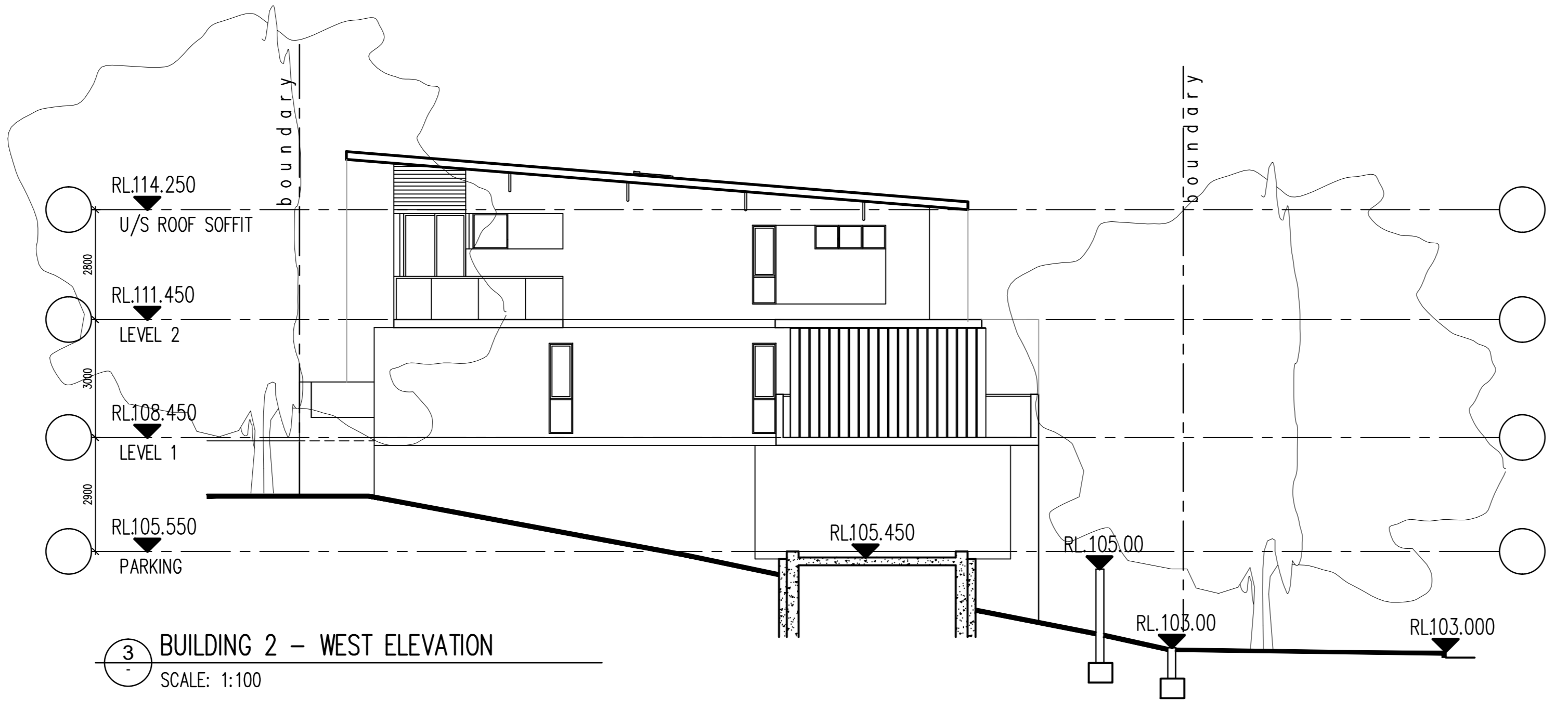
2 BUILDING 2 - SOUTH ELEVATION
SCALE: 1:100

B2 Elevations (A1005-B) Rev B - East Elevation

1. Windows reconfigured
2. Balcony removed



4 BUILDING 2 - EAST ELEVATION
SCALE: 1:100



3 BUILDING 2 - WEST ELEVATION
SCALE: 1:100

NOTE FOR BRICKWORK :-
 * ELECTRICAL OUTLETS ON RESIDENTIAL FLOORS ARE HOLLOW CORE COIRDS LINED ON INSIDE FACE WITH 12mm FIRE GRADE PLASTERBOARD WITH A PERIMETER SMOKE SEAL.
CARPARK LEVELS (F.R.L. FOR WALLS)
 * LIFT SHAFT 240/120/120
 * FIRE STAIRS - /120/120
 * VENTILATION AND GARAGE SHAFTS - /120/120
 * WARE GARAGE ROOM DOOR - /120/20
 * FIRE STAIR DOORS - /60/30
COMMERCIAL & RETAIL LEVELS (F.R.L. FOR WALLS)
 * LIFT SHAFT 180/120/120
 * FIRE STAIRS - /120/120
 * VENTILATION AND GARAGE SHAFTS - /120/120
 * FIRE STAIR DOORS - /60/30
RESIDENTIAL LEVELS (F.R.L. FOR WALLS)
 * LIFT SHAFT 90/90/90
 * FIRE STAIRS - /90/90
 * VENTILATION AND GARAGE SHAFTS - /90/90
 * GARAGE ROOM DOOR - /60/30
 * FIRE STAIR DOORS - /60/30
 * APARTMENT DOORING WALLS AND WALLS
 * BROWNING PUBLIC WALK AND CORRIDORS - /60/60
 N.B. ALL F.R.L.'S RELATE TO NON-LOADBEARING CONSTRUCTION AS APPLICABLE.
 CODE DEFINITION
 (STRUCTURAL ADEQUACY/INTEGRITY/INSULATION)

ISSUE	DATE	REVISION	BY	ISSUE	DATE	REVISION	BY
B	15.11.11	SECTION 98 SUBMISSION TO COUNCIL	J.K.				
A	27.06.11	SECTION 98 SUBMISSION TO COUNCIL	J.K.				

GENERAL NOTES:
 THIS DRAWING IS THE EXCLUSIVE PROPERTY OF MERITON APARTMENTS PTY. LTD. AND THE REPRODUCTION OF ANY PART WITHOUT THE PRIOR WRITTEN CONSENT OF MERITON APARTMENTS PTY. LTD. IS A VIOLATION OF APPLICABLE LAWS. IN NO EVENT SHALL MERITON APARTMENTS PTY. LTD. BE HELD LIABLE FOR SPECIAL, COLLATERAL, INCIDENTAL OR CONSEQUENTIAL DAMAGES IN CONNECTION WITH THE USE OF THIS DESIGN. DATA OBTAINED FROM THE MERITON APARTMENTS PTY. LTD. OFFICES.
 THIS DRAWING IS TO BE READ AND UNDERSTOOD IN CONJUNCTION WITH THE STRUCTURAL, MECHANICAL, ELECTRICAL AND / OR ANY OTHER CONSULTING DOCUMENTATION AS MAY BE APPLICABLE TO THE PROJECT PRIOR TO THE START OF ANY WORKS AND FOR ITS DURATION.

<p>Meriton Apartments Pty. Ltd. Builders & Developers Level 11, 529 Kent Street, Sydney NSW 2000 Tel: (02) 9287 2888 Fax: (02) 9287 2777 Email: info@meriton.com.au Website: www.meriton.com.au</p>	PROJECT: PROPOSED RESIDENTIAL DEVELOPMENT NEW RESIDENTIAL DEVELOPMENT EPPING PARK, MOBBS LANE EPPING, NSW 2121	DRAWING TITLE: B2 ELEVATIONS	PROJECT No: 756	DATE: 11/15/2011	DRAWING No: A1005-B	DESIGNED BY: B
	DRAWN BY: A.M.	SCALE: AS SHOWN	CAD FILE: S:\EPING-PARK\ARCH\B2-1-2-3\SECTION 98 15.11.11\A-1005-B B2 ELEVATIONS.DWG			