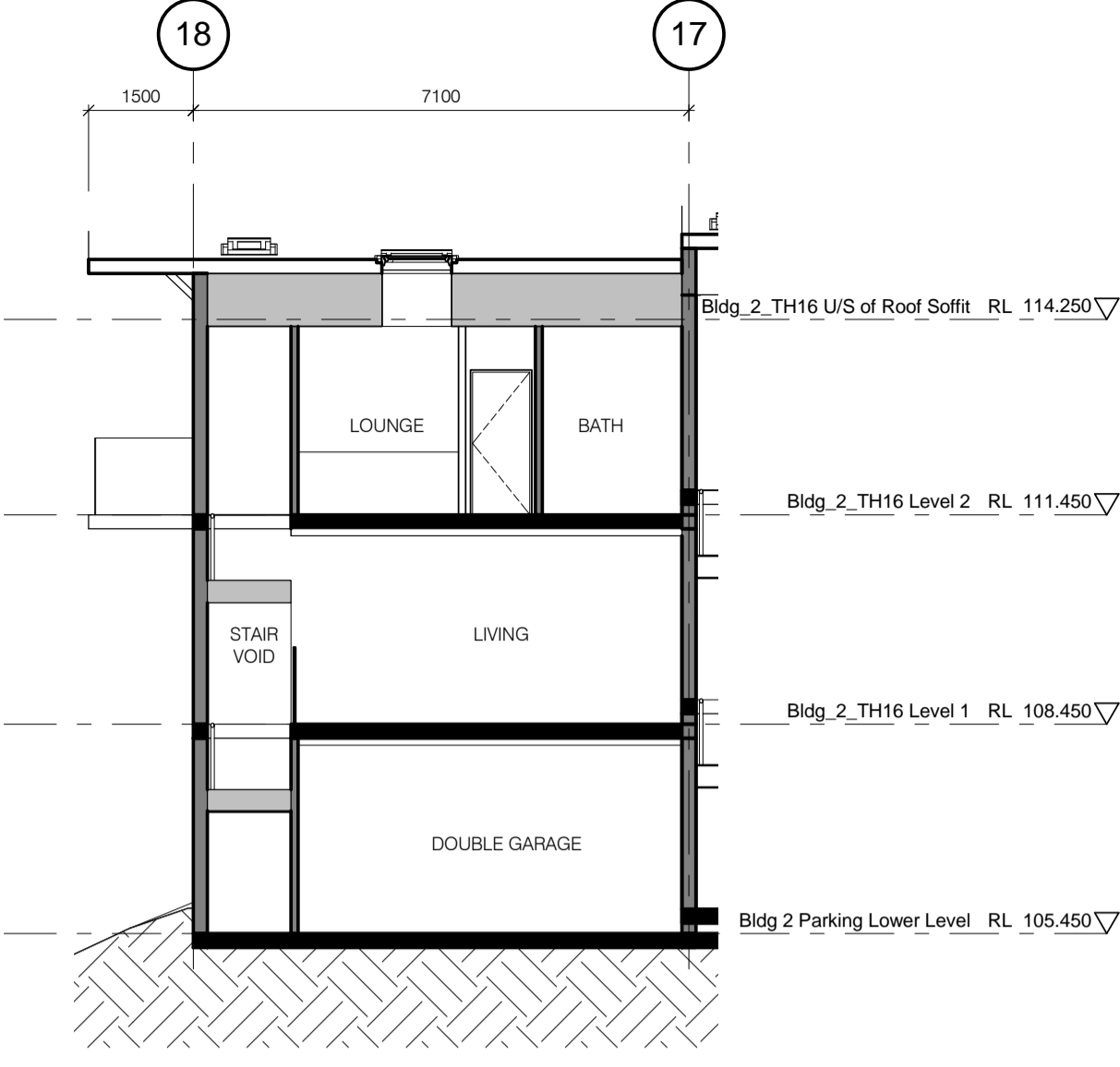
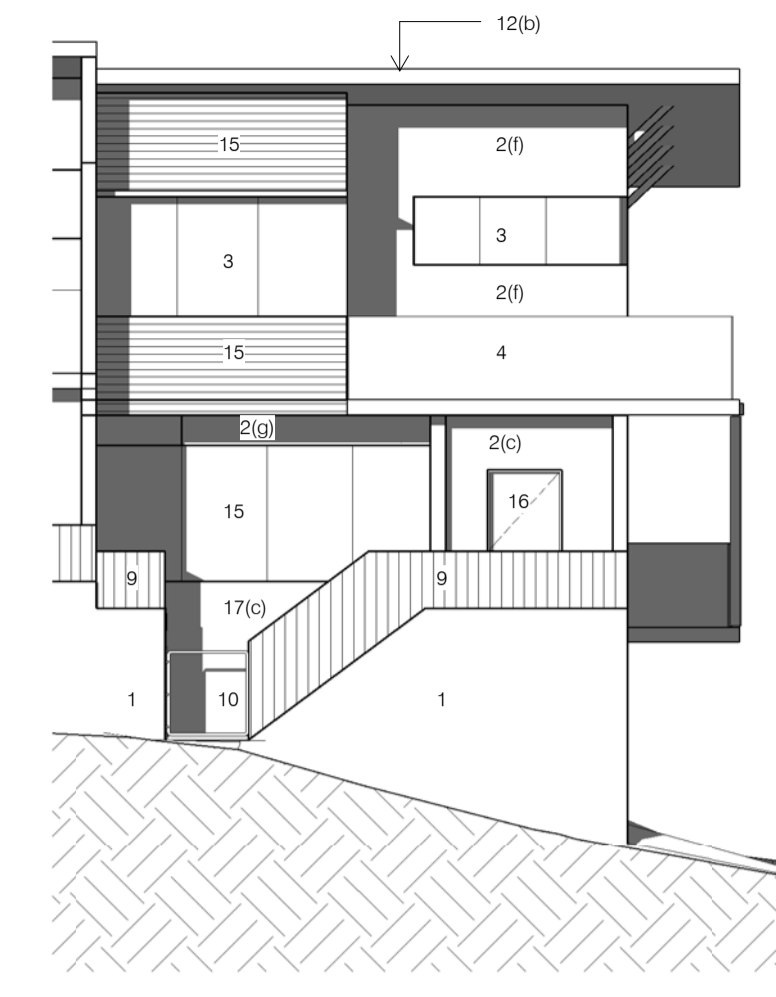


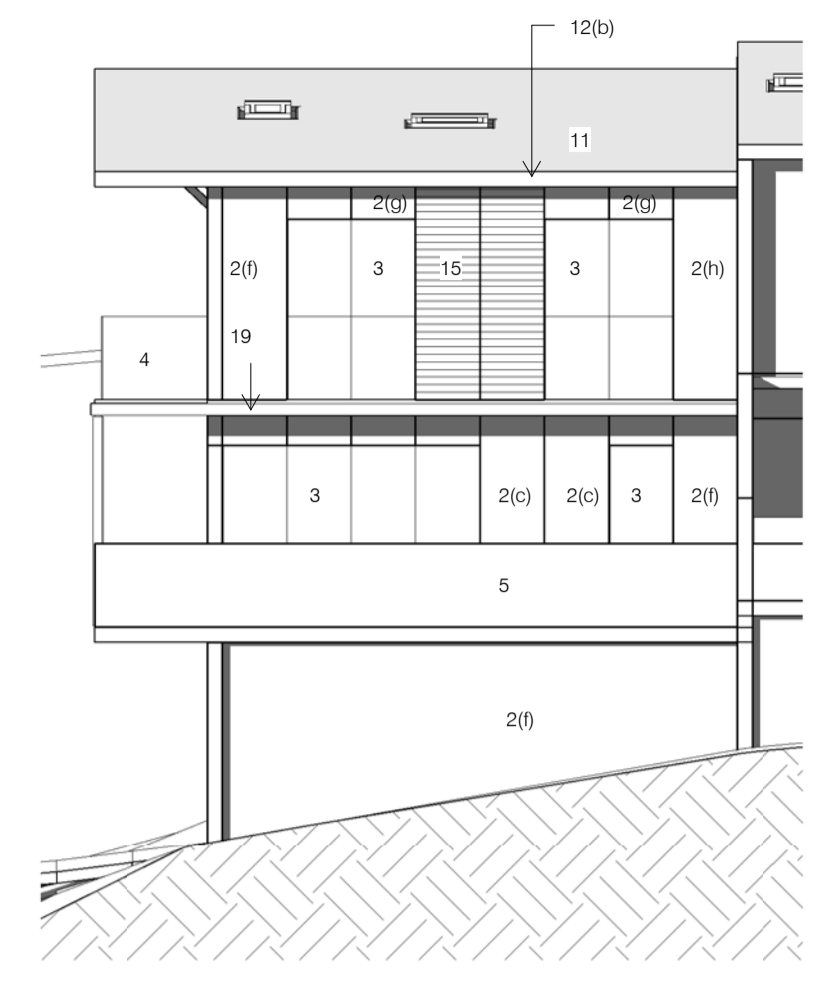
5 BLDG 2 (TYPE 3) LONG SECTION
1 : 100



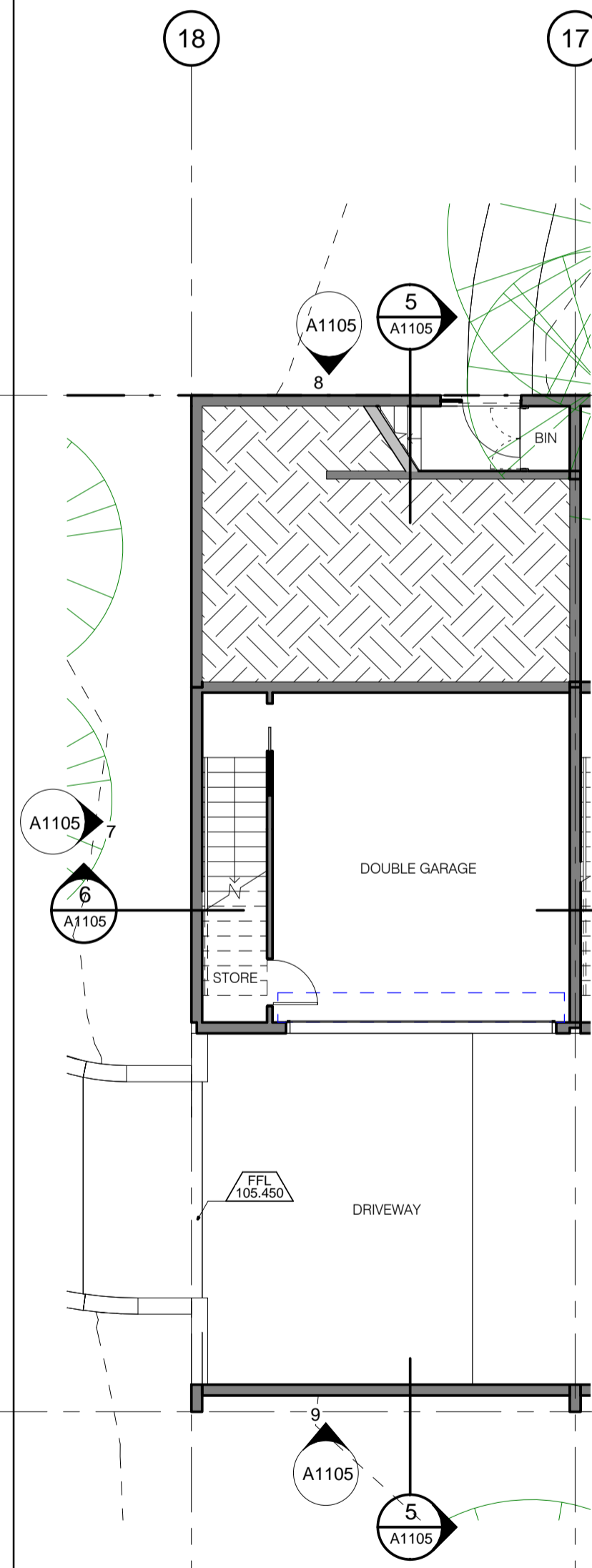
6 BLDG 2 (TYPE 3) CROSS SECTION
1 : 100



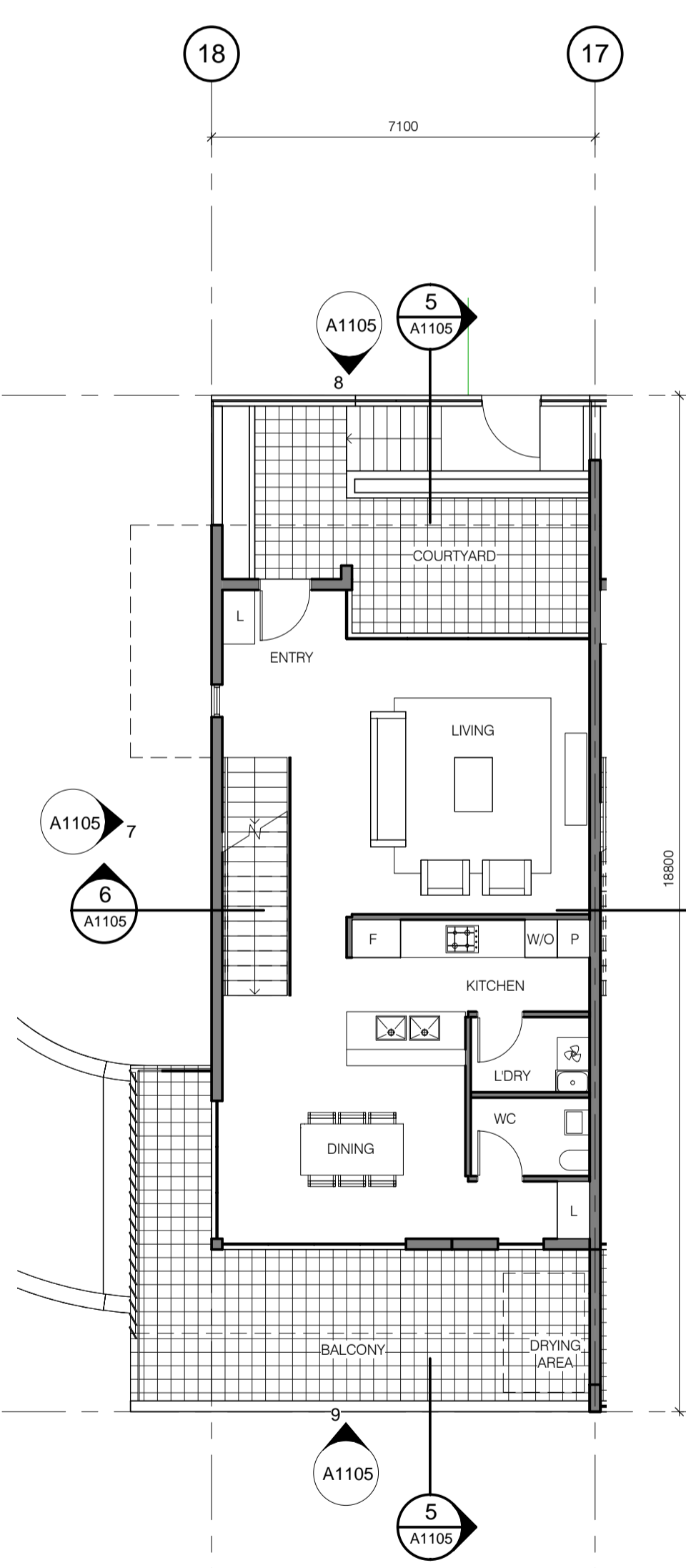
8 BLDG 2 (TYPE 3) FRONT ELEVATION
1 : 100



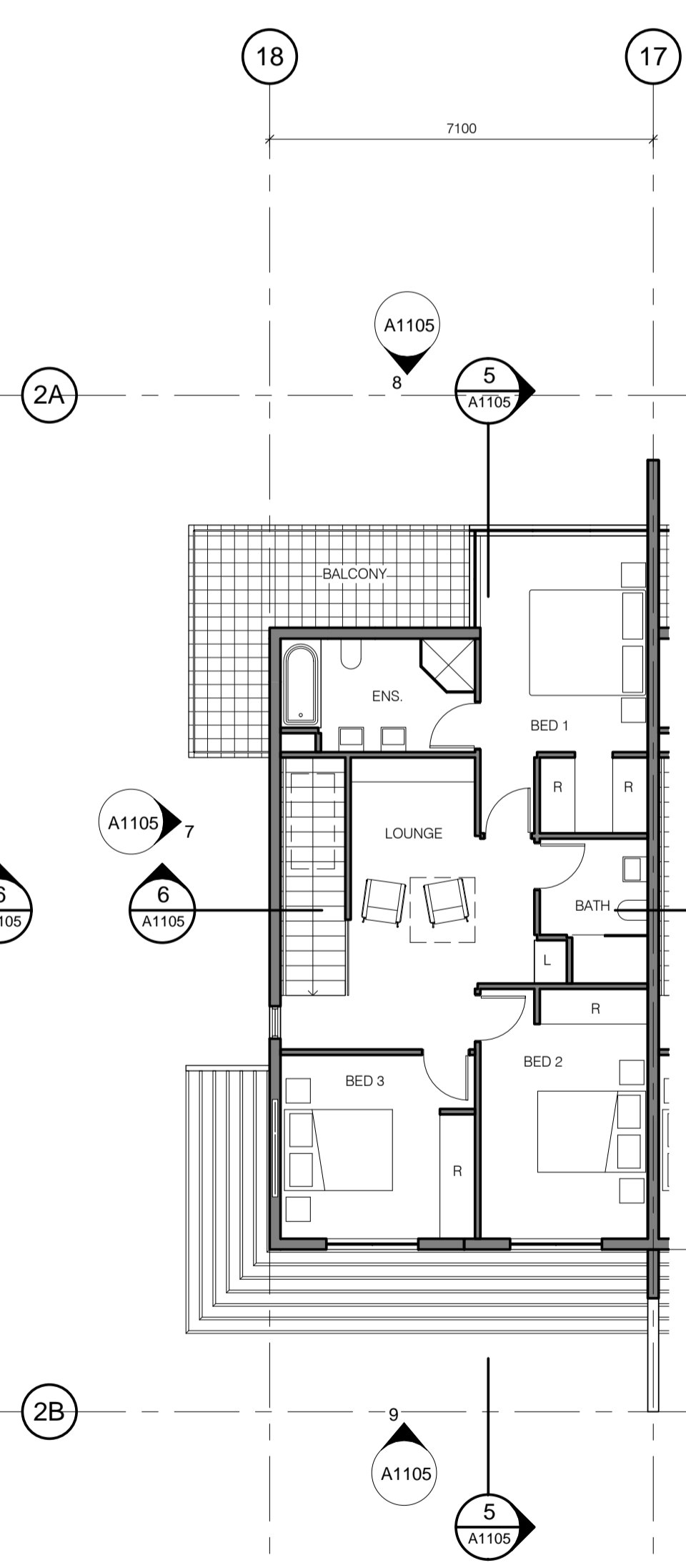
9 BLDG 2 (TYPE 3) REAR ELEVATION
1 : 100



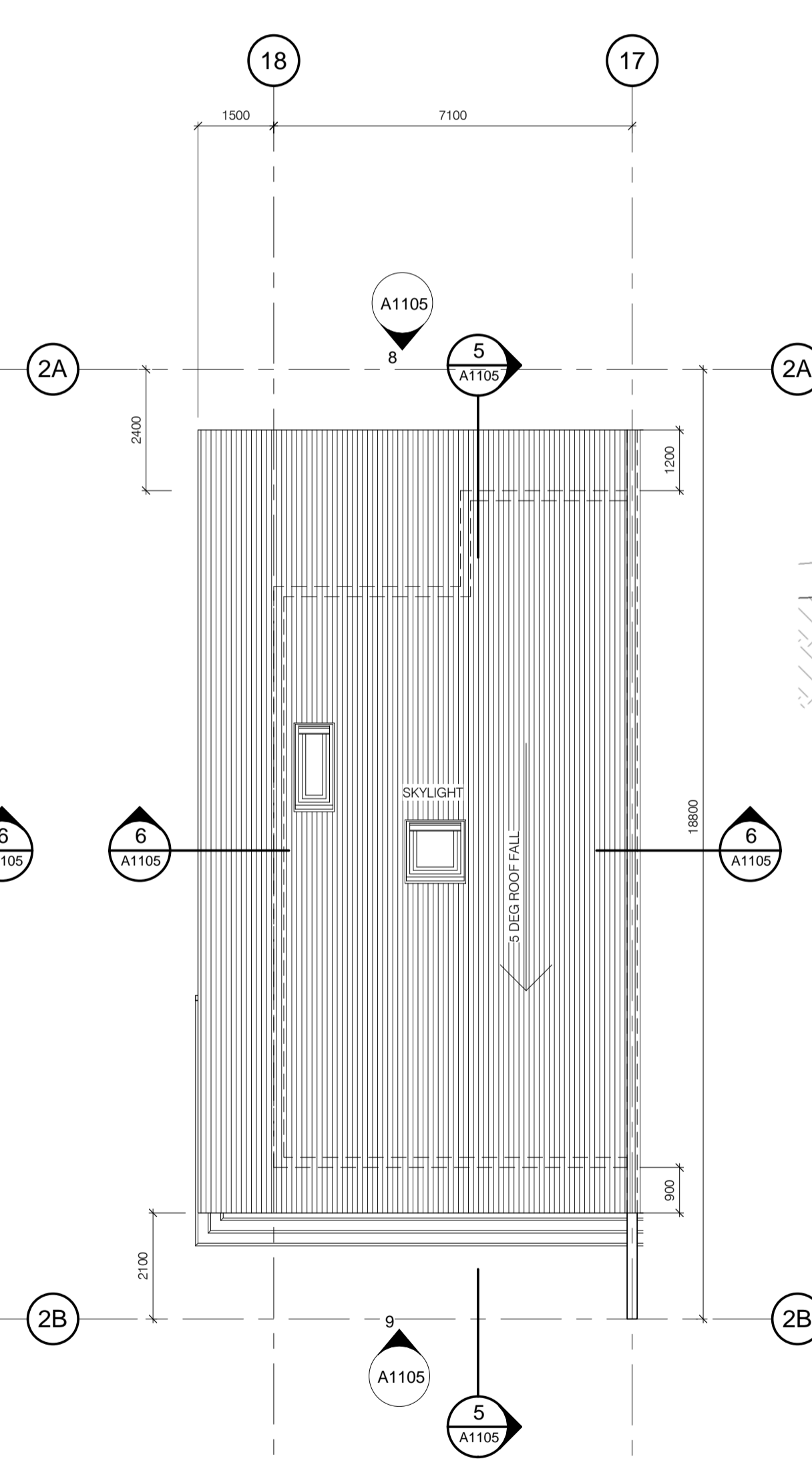
10 BLDG 2 PARKING PLAN (TYPE 3)
1 : 100



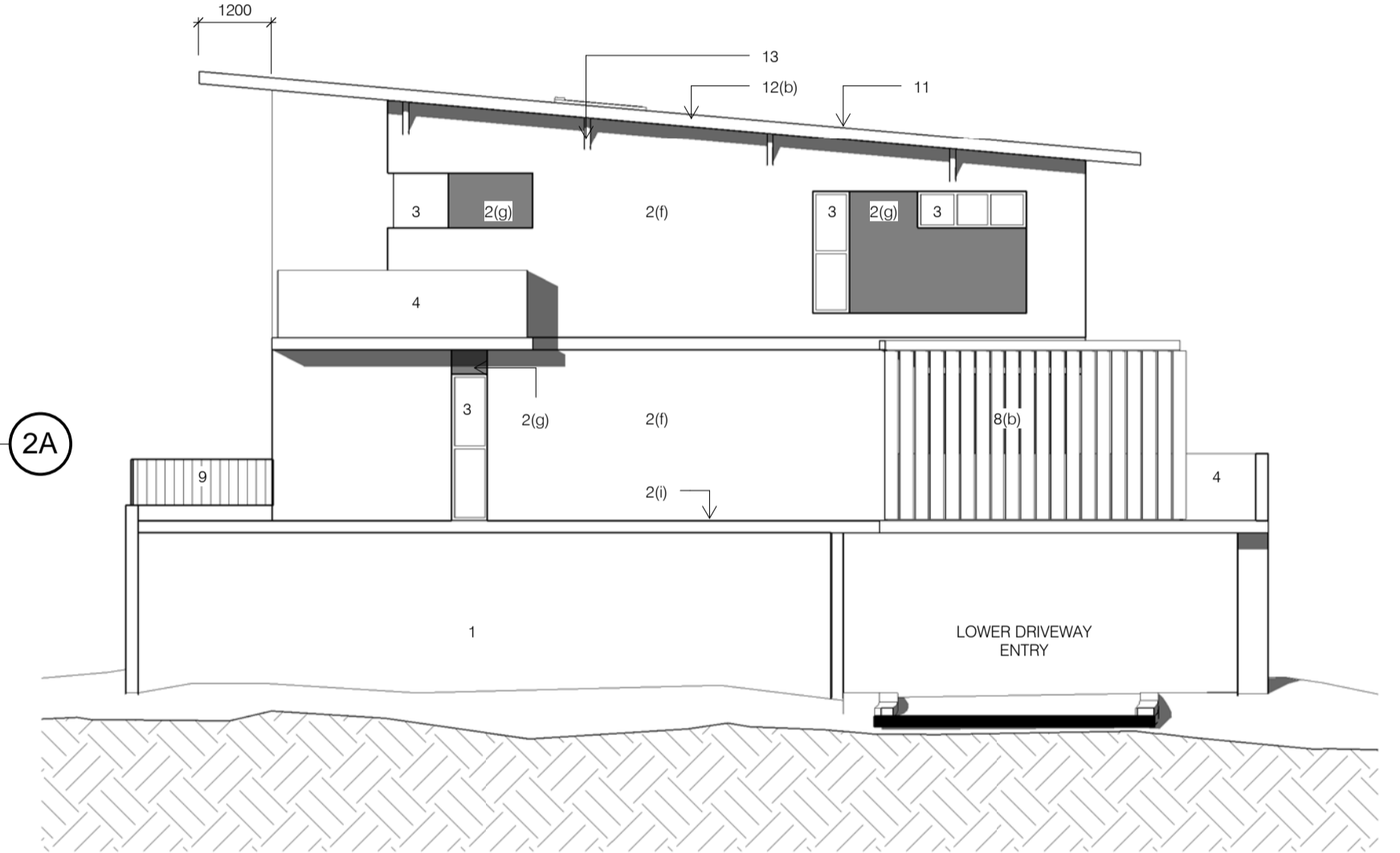
2 BLDG 2 LEVEL 1 PLAN (TYPE 3)
1 : 100



3 BLDG 2 LEVEL 2 PLAN (TYPE 3)
1 : 100



4 BLDG 2 ROOF PLAN (TYPE 3)
1 : 100



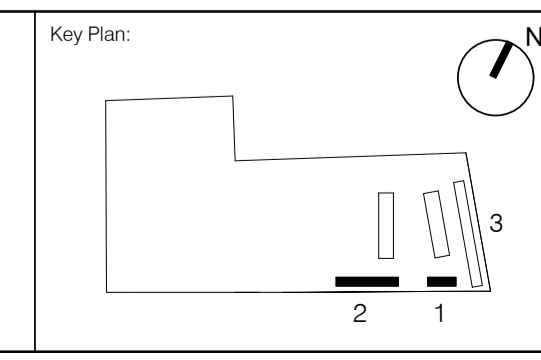
7 BLDG 2 (TYPE 3) SIDE ELEVATION
1 : 100

LEGEND

- 1 RUSTICATED MASONRY
- 2 PAINT FINISH
 - a) FEATURE COLOUR 1
 - b) FEATURE COLOUR 2
 - c) FEATURE COLOUR 3
 - d) FEATURE COLOUR 4
 - e) FEATURE COLOUR 5
 - f) COLOUR GREY 1
 - g) COLOUR GREY 2
 - h) COLOUR GREY 3
 - i) COLOUR WHITE FOR SLAB EDGE / BLADE WALLS
- 3 GLAZING WITH ALUMINUM FRAMED DOORS AND WINDOWS
- 4 SOLID BALUSTRADE
- 5 EXTERNAL SUNSHADE, PAINT FINISH
- 6 VERTICAL LOUVRES, TIMBER LOOK 1
 - a) SLIDING
 - b) FIXED
- 8 VERTICAL LOUVRES, TIMBER LOOK 2
 - a) SLIDING
 - b) FIXED
- 9 FENCE
- 10 GATE
- 11 METAL DECK ROOF
- 12 FASCIA, GUTTER & DOWNPIPE
 - (a) COLOUR 1
 - (b) COLOUR 2
- 13 STEEL TRUSS
- 14 SCREEN TO DRIVEWAY TO MATCH TOWNHOUSE FEATURE WALL COLOUR
- 15 METAL CLADDING
- 16 FRONT DOOR, PAINT FINISH
- 17 TILES
 - (a) FEATURE COLOUR 1
 - (b) FEATURE COLOUR 2
 - (c) FEATURE COLOUR 3
 - (d) FEATURE COLOUR 4
 - (e) FEATURE COLOUR 5
- 18 GLASS BALUSTRADE TO MATCH TOWNHOUSE FEATURE WALL COLOUR
- 19 PERGOLA

NOTE
1 Site and Landscape shown for context only. Refer to Landscape Architect's drawings.
2 Furniture layout shown indicative only.

| No. | Amendment | Chk. | Date | No. | Amendment | Chk. | Date |
|-----|---------------------|------|----------|-----|-----------|------|------|
| - | PROJECT APPLICATION | | 26.08.10 | | | | |



Consultants:
Landscape: Sturt Associates, Suite 91, Level 5, 330 Watte Street, Ultimo NSW 2007. T (02) 9211 3744
Traffic: Halcrow, Suite 20, 809 Pacific Hwy, Chatswood NSW 2067. T (02) 9410 4100
Planner: Meriton, Level 11, 528 Kent Street, Sydney NSW 2000. T (02) 9287 2888

Client:
Meriton Apartments Pty Ltd
Level 11, 528 Kent Street Sydney NSW 2000
www.meriton.com.au

PTW Architects
Level 17, 9 Castlereagh St Sydney NSW Australia 2000
T +612 9232 5877 F +612 9221 4139
NSW Nominated Architects: A Architects No. 2622, B Architects No. 3916, C Architects No. 4778, D Architects No. 5257, E Architects No. 6559, F Architects No. 5257

Approvals:
By: SP
Date: 26.08.2010
Client Approval:

Project:
EPPING PARK, BUILDINGS 1 & 2
61 MOBBES LANE, EPPING
Title: BUILDING 2 (TYPE 3 TOWNHOUSE)

Scale: 1 : 100 @A1
Plot Date: 26/08/2010 2:31:00 PM
Job No: 209003
Revision:
Dwg No: A1105
Status: PROJECT APPLICATION