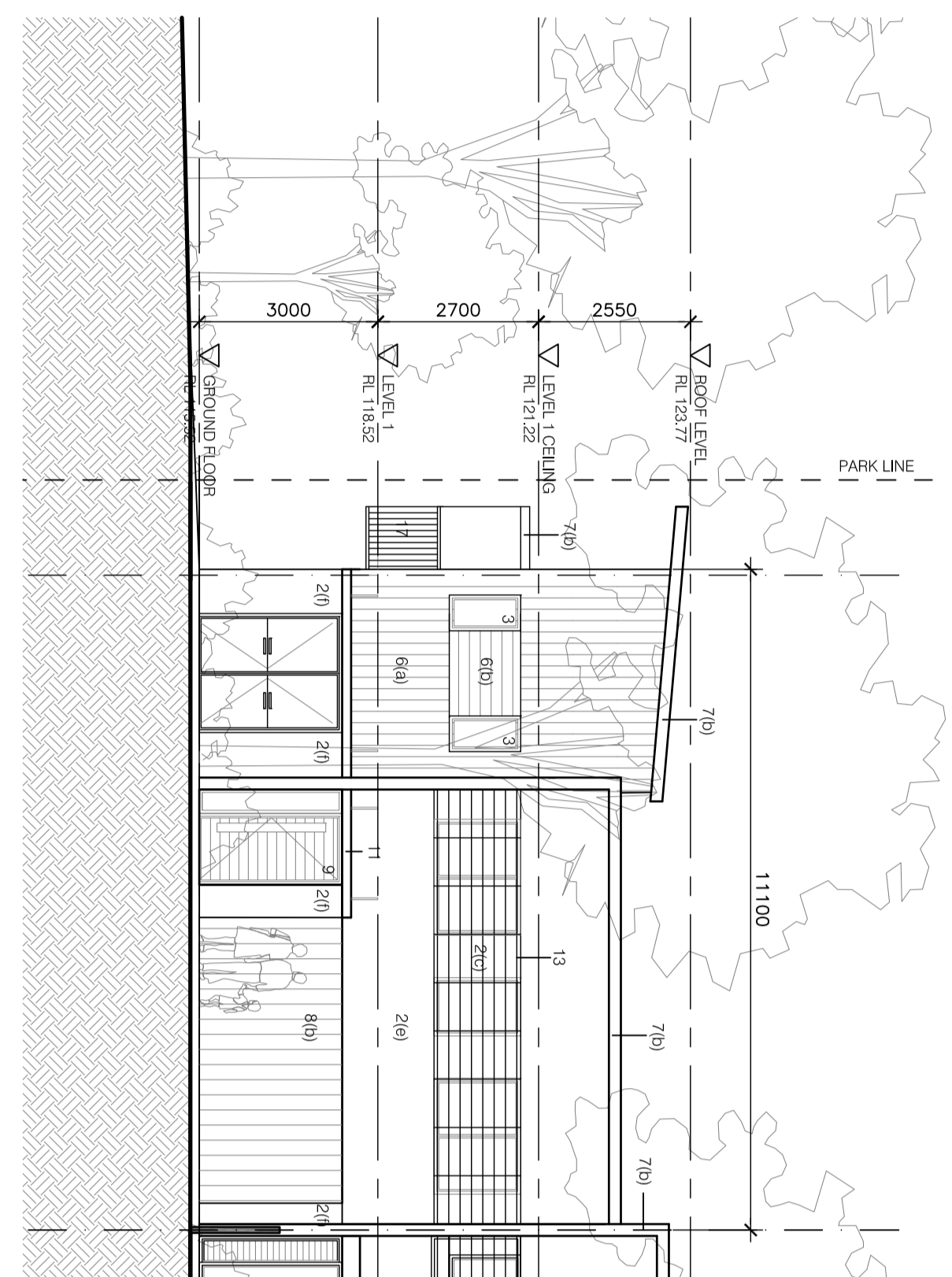
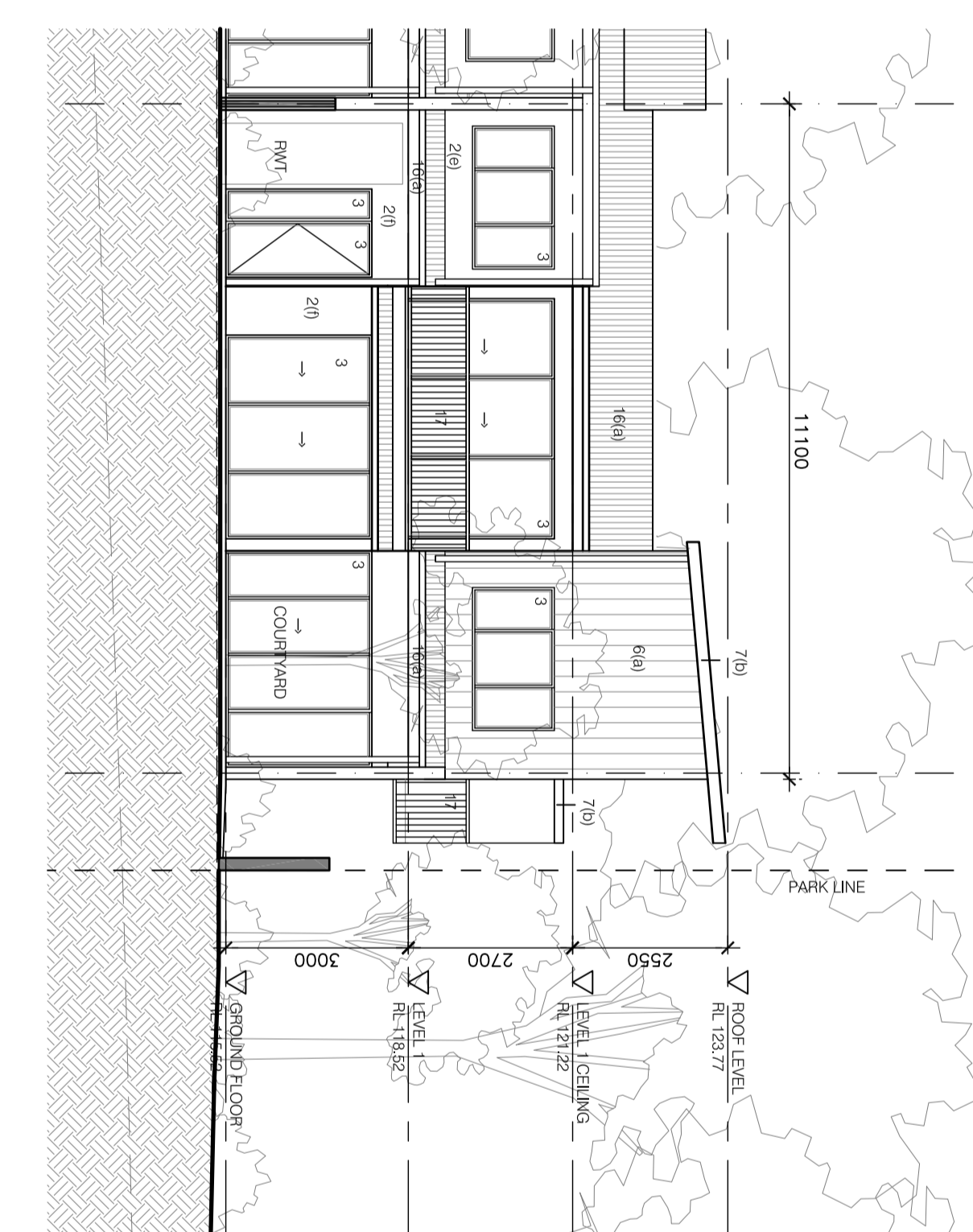


**LEGEND:**

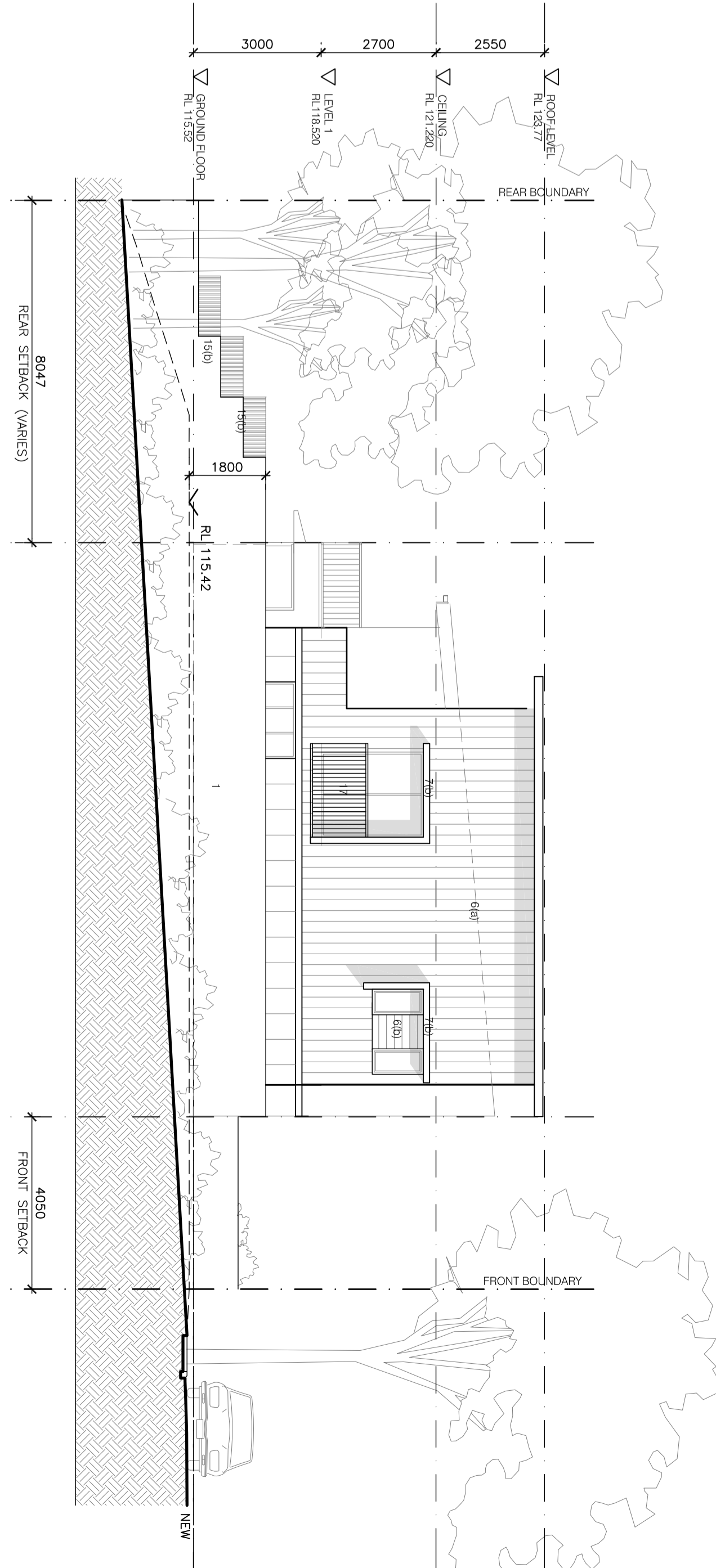
- 01 RUSTICATED MASONRY
- 02 RENDER PAINTED
  - a) COLOUR 1
  - b) COLOUR 2
  - c) COLOUR 3
  - d) COLOUR 4
  - e) COLOUR 5
  - f) COLOUR 6
- 03 GLAZING WITH ALUMINIUM FRAMED DOORS AND WINDOWS (TIMBER LOOK)
  - a) BRICK COLOUR 1
  - b) BRICK COLOUR 2
- 04 METAL CLADDING
  - a) VERTICAL PLANK CLADDING COLOUR CHARCOAL
  - b) VERTICAL PLANK CLADDING COLOUR TIMBER
  - c) VERTICAL PLANK CLADDING COLOUR 3
- 05 PAINT FINISH, COLOUR 1
- 06 PAINT FINISH, COLOUR 7
- 07 PAINT FINISH, COLOUR 8
  - a) GARAGE DOOR, ALUMINIUM PAINTED COLOUR 1
  - b) GARAGE DOOR, ALUMINIUM PAINTED COLOUR 2
- 08 FRONT DOOR, TIMBER LOOK
- 09 BACK DOOR, ALUMINIUM PAINTED CANOPY ALUMINIUM
- 10 FIXED TIMBER LOUVRES, TIMBER LOOK
- 11 FIXED HORIZONTAL ALUMINIUM LOUVRES
- 12 FRONT FENCE, TYPE A, METAL
- 13 FRONT FENCE, TYPE B, TIMBER LOOK
- 14 PARTITION FENCE, METAL LOOK
- 15 METAL DECK ROOF, DARK GREY
- 16 METAL DECK ROOF, LIGHT GREY BALUSTRADE, TYPE 1, ALUMINIUM
- 17 BALUSTRADE, TYPE 2, ALUMINIUM FRAME, SOLID PANELS
- 18 EXTERNAL ALUMINIUM SUNSHADE PERGOLA
- 19
- 20



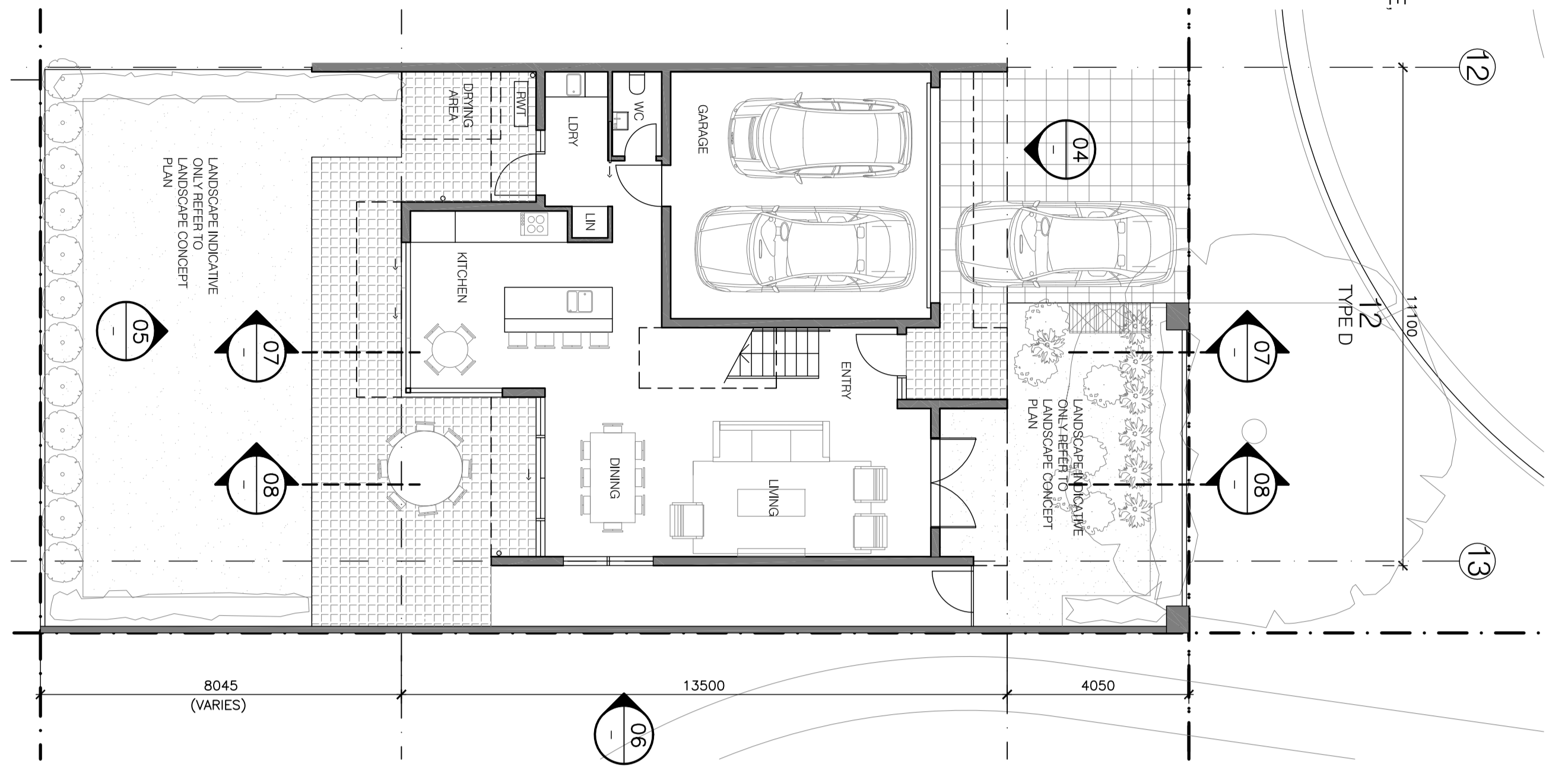
04 FRONT ELEVATION



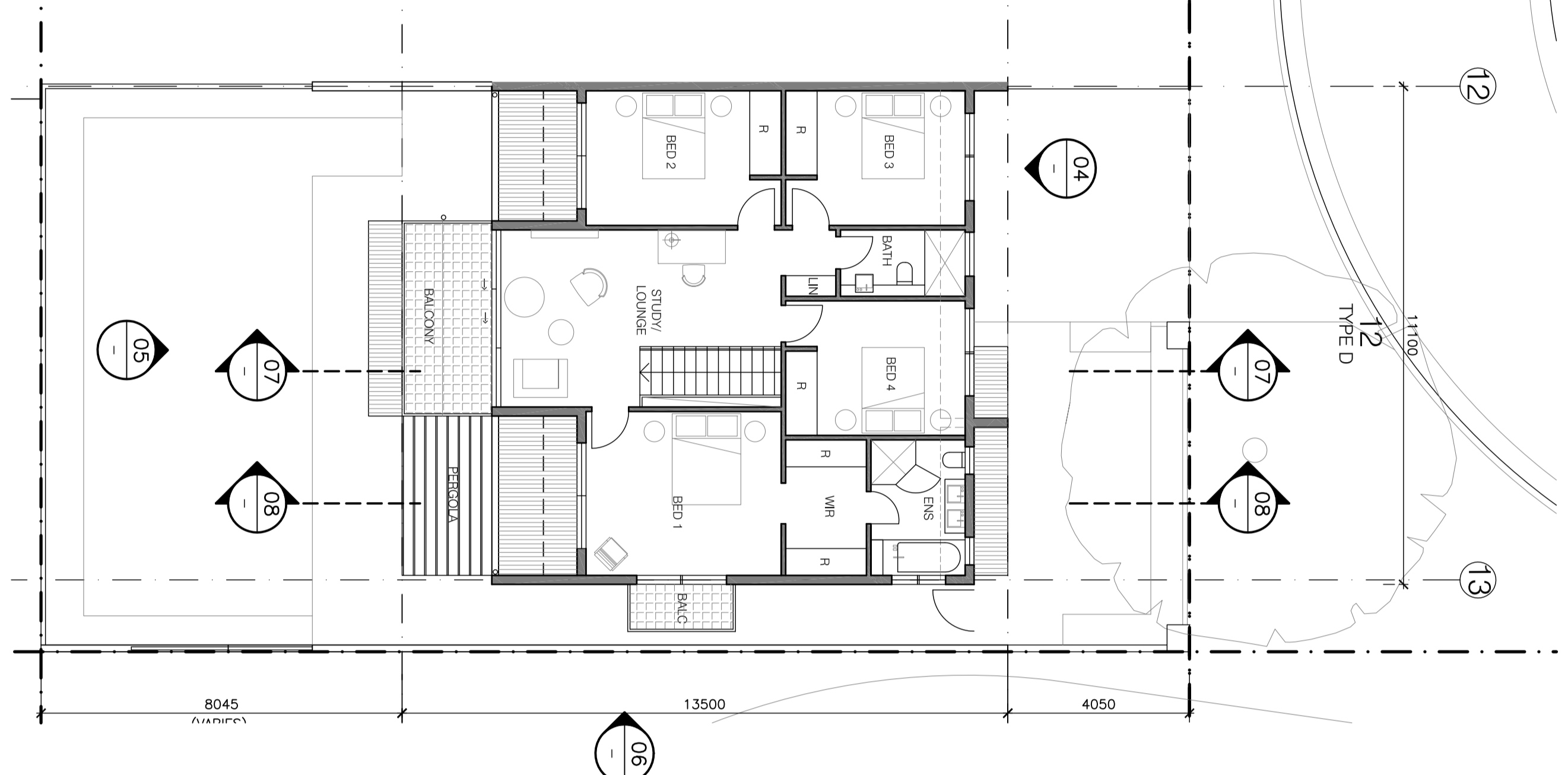
05 REAR ELEVATION



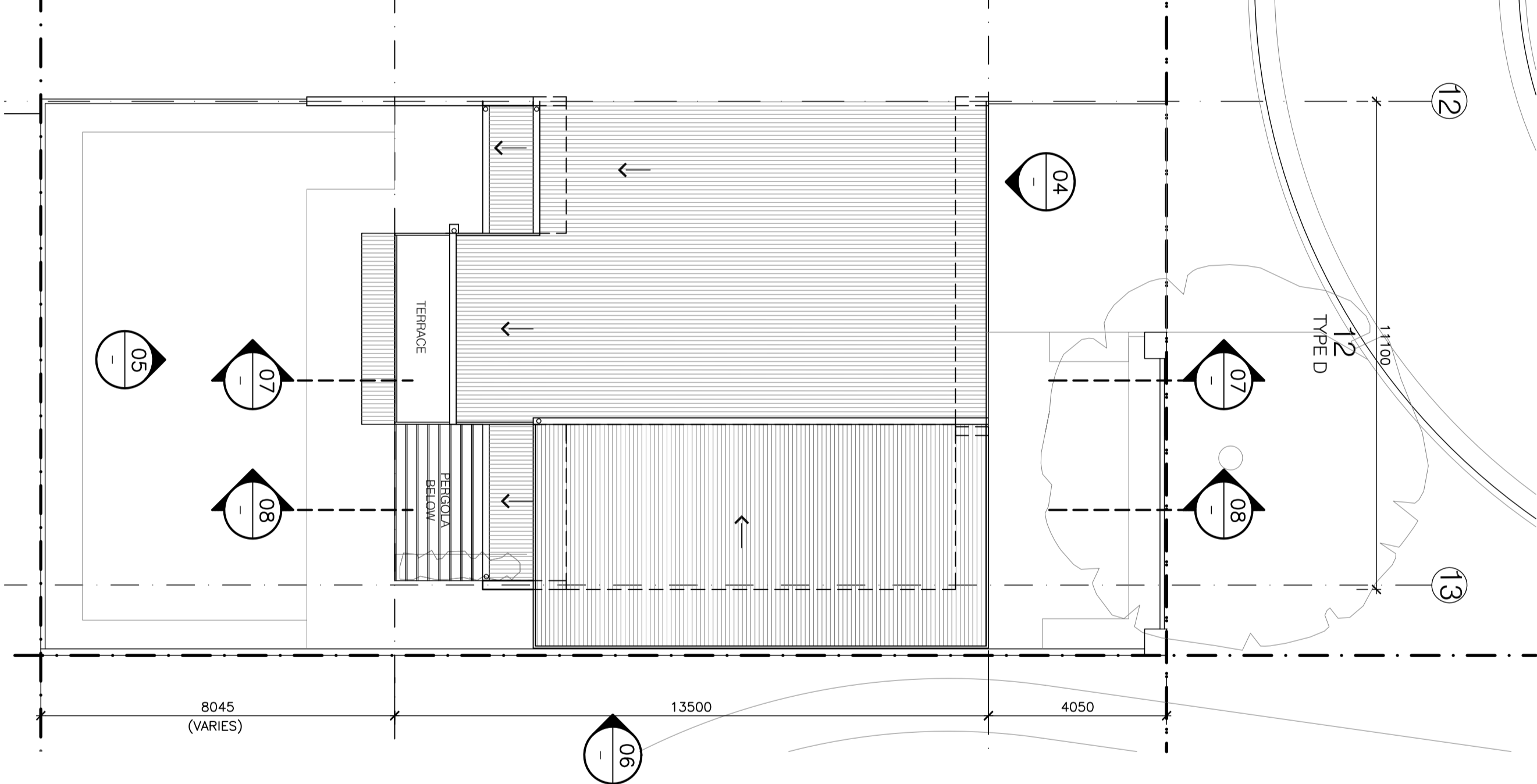
06 SIDE ELEVATION



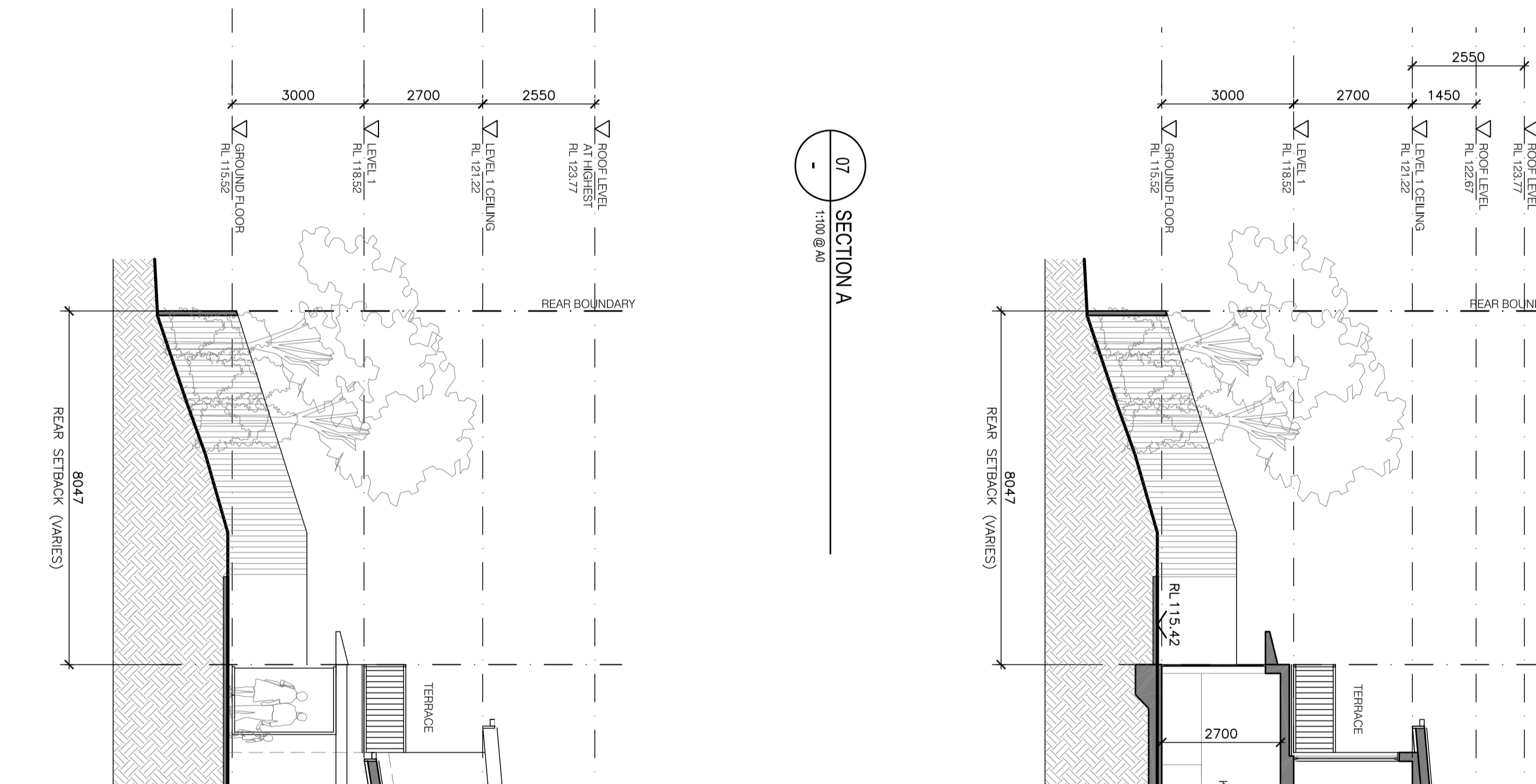
01 GROUND FLOOR PLAN



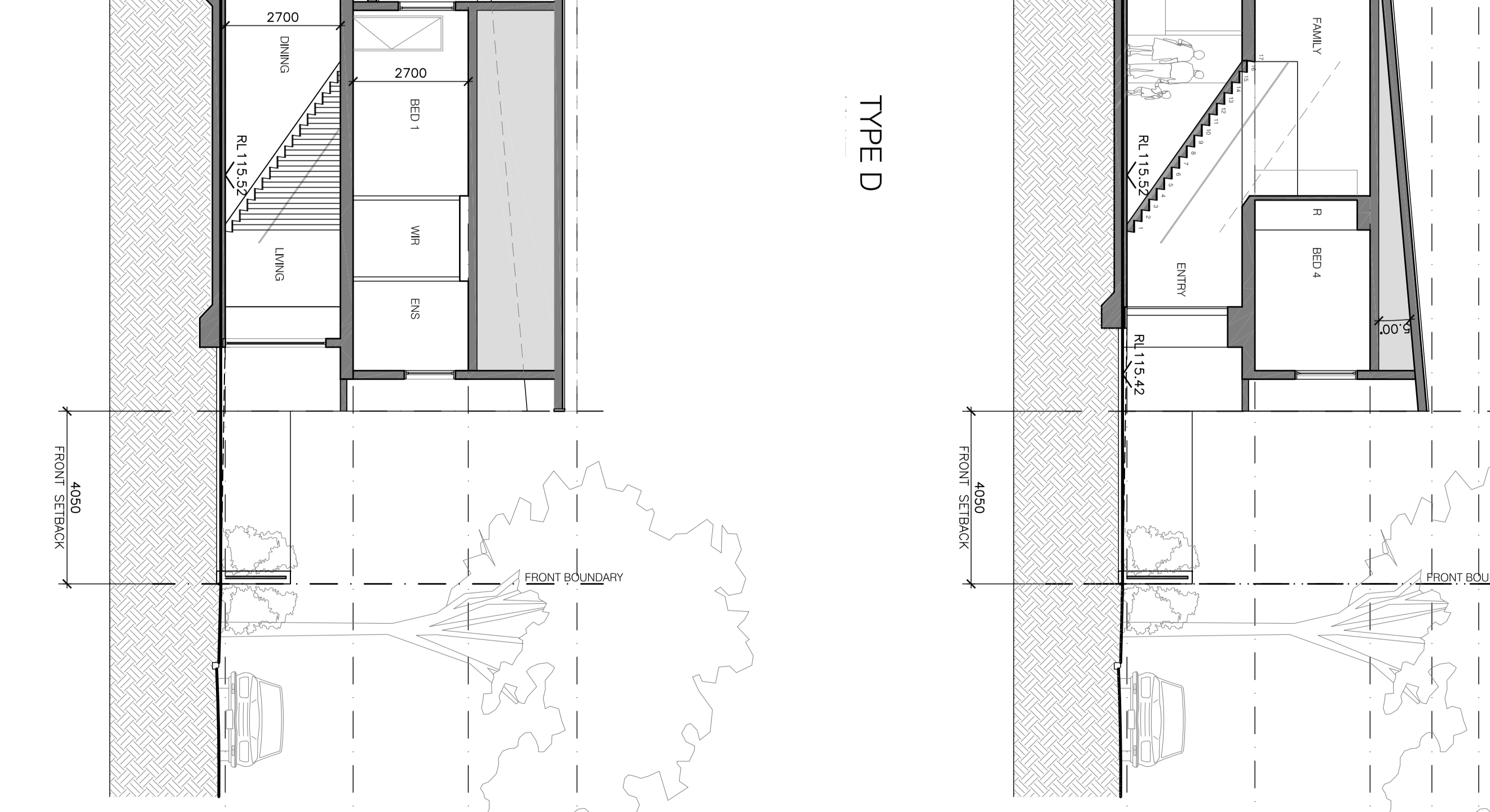
02 FIRST FLOOR PLAN



03 ROOF PLAN



07 SECTION A



08 SECTION B

**NOTES:**  
 - FURNITURE SHOWN FOR INFORMATION ONLY  
 - SITE AND LANDSCAPE SHOWN FOR CONTEXT ONLY FOR LANDSCAPE DETAILS REFER TO LANDSCAPE ARCHITECTS DRAWINGS  
 - REFER TO DRAWINGS A-3005, A-3006, A-3007, A-3008 FOR UNIT CONTEXT

Scale 1:100 @A0 1:200 @A2 0 2 4 6 8

Project Application  
 26.04.10  
 Date

Revision  
 0 2 4 6 8

Key Plan

Consultants  
 CH4  
 Martin  
 Level 11, 528 Kent Street, Sydney, NSW, 2000  
 Tel: 02 9237 2888  
 Fax: 02 9410 4100  
 Tel: 02 9237 2888

Client  
 Merton Apartments Pty Ltd  
 Level 11, 528 Kent Street  
 Sydney, Australia 2000  
 T 612 92372888  
 www.merton.com.au

Architect  
 PTW Architects  
 Level 17, 9 Colburnway St  
 Sydney, NSW, Australia 2000  
 T 612 9232 9377  
 www.ptw.com.au

Project  
 Epping Park  
 61 Mackin Lane, Epping  
 Stage 1 (Building 3)

Drawn: JFY  
 Checked: SP  
 APPROVED: SP

PROJECT NO: 2609/03  
 DATE: 27.04.09

Project Application  
 A-3103

Do not scale from drawings. Verify dimensions from drawings. Copying or reproduction of this drawing is strictly prohibited without the consent of Potts & Walker Pty.