

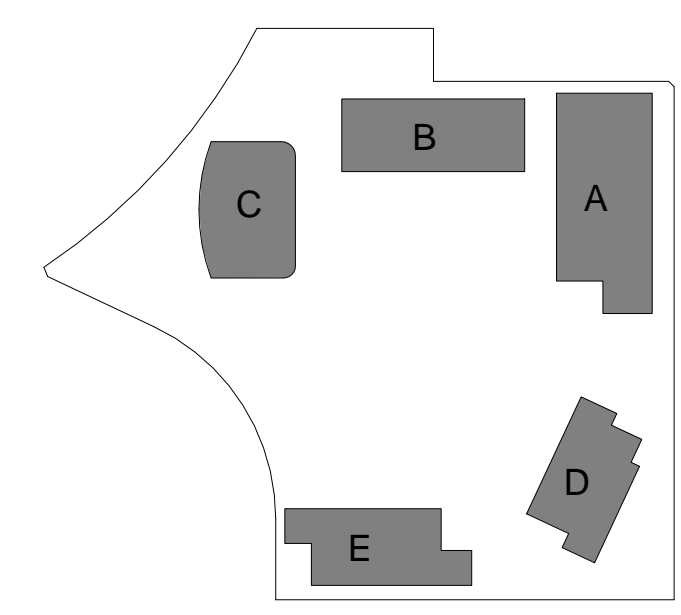
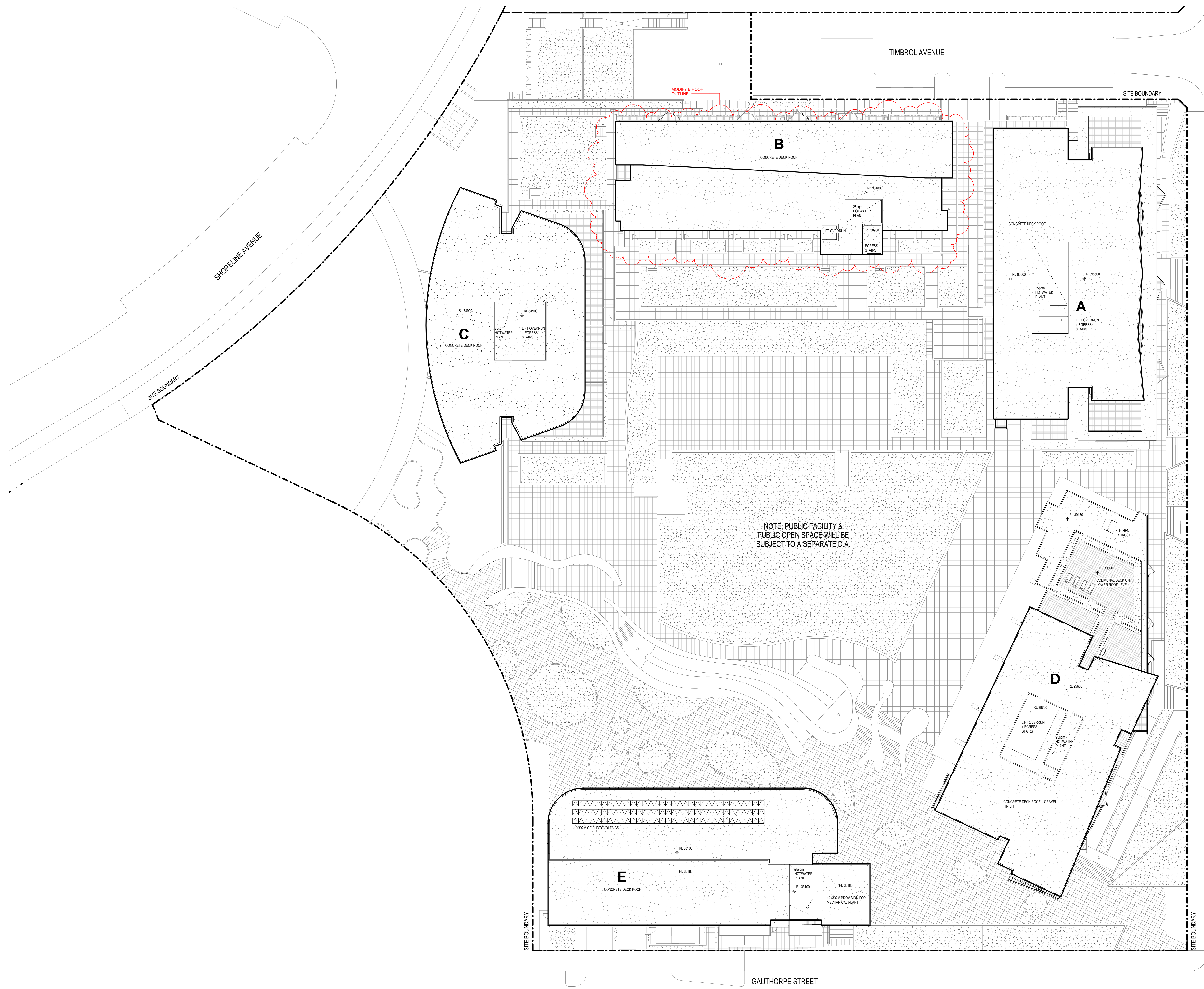
In accepting and utilising this document the recipient agrees that SJB Architects (NSW) Pty. Ltd. ACN 081 094 724 T/A SJB Architects, retain all common law, statutory law and other rights including copyright and intellectual property rights. The recipient agrees not to use this document for any purpose other than its intended use. To waive all claims against SJB Architects resulting from unauthorised changes, or to reuse the document on other projects without the prior written consent of SJB Architects. Under no circumstances shall transfer of this document be deemed a sale. SJB Architects makes no warranties of fitness for any purpose.

The Builder/Contractor shall verify job dimensions prior to any work commencing. Figured dimensions shall take precedence over scaled work.

Rev.	Date	Revision
A	12/11/2010	DA Test of Adequacy
A-1	22/02/2011	Preliminary Project
A-2	15/04/2012	S75W MOD1 - March 2012
A-3	16/07/2012	Adaptable Parking
A-4	24/08/2012	Adaptable Parking - 3bed to 1bed
A-5	16/10/2012	S75W MOD2 - October 2012

**NOTE:**  
ALL INTERNAL RL'S REPRESENT STRUCTURAL SLAB LEVEL TYPICALLY.

**NOTE:**  
ROOF LEVEL RL'S ARE SSL AT LOW POINT IN ROOF TYPICALLY



Client



**Billbergia**  
creating communities®

Project  
**STAGE 2A + 3A**  
**WALKER ST.**  
**RHODES**  
for  
Billbergia Developments

Drawing Name  
**Roof Plan**

Date: 22.10.2012  
Scale: 1 : 250  
Sheet Size: @ B1

Reg No.: JT  
Drawn: JT  
Chk.: JP

Job No.: 4410  
Drawing No.: A-0218  
Revision: A-5

SJB Architects  
Level 2, 490 Crown St  
Surry Hills NSW  
2010 Australia  
T 61 2 9380 9911  
F 61 2 9380 9922  
www.sjb.com.au

Nominated Architects  
Adam Haddock 7188  
John Pradel 7004

