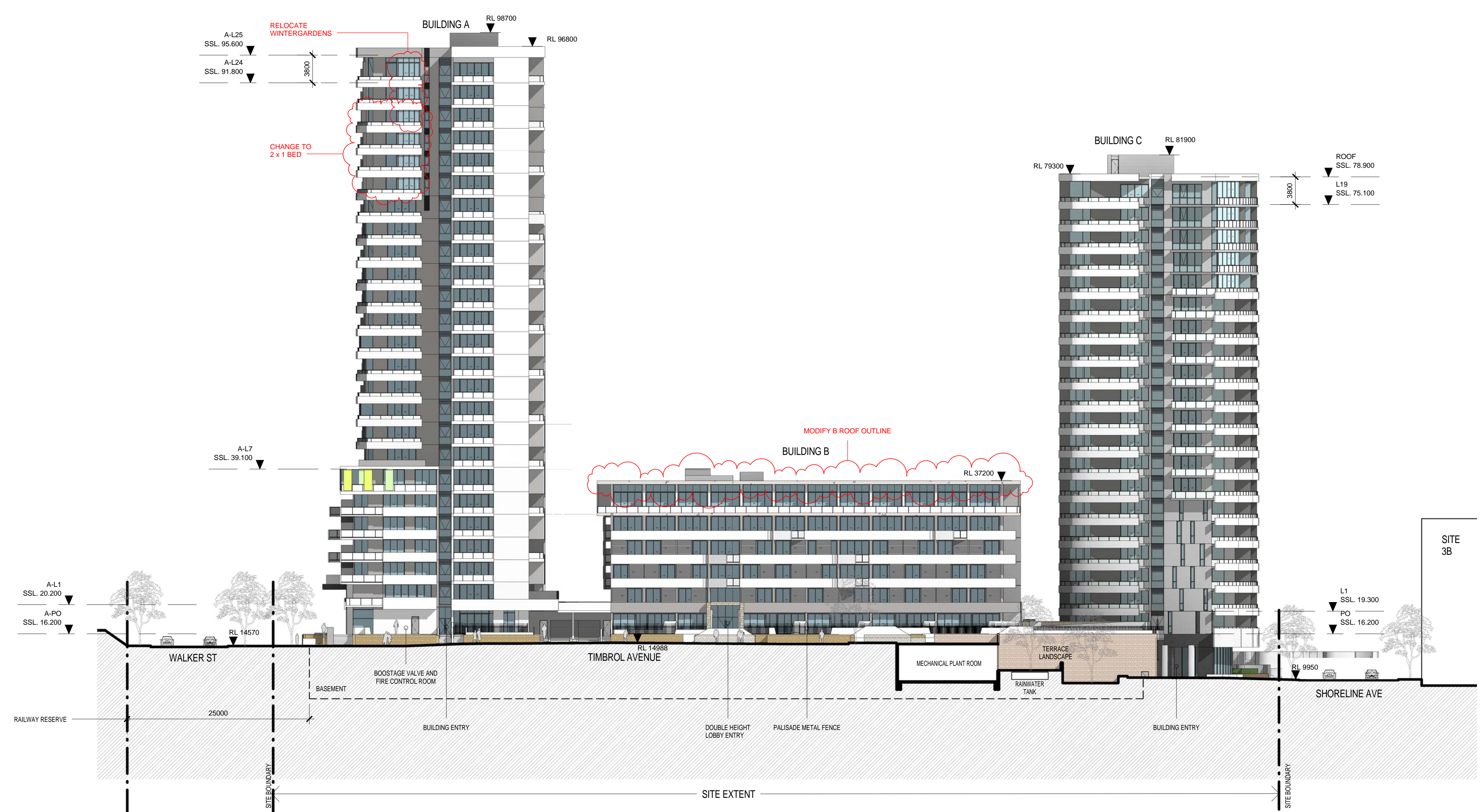




1 ELEVATION
Walker Street Elevation
1:350

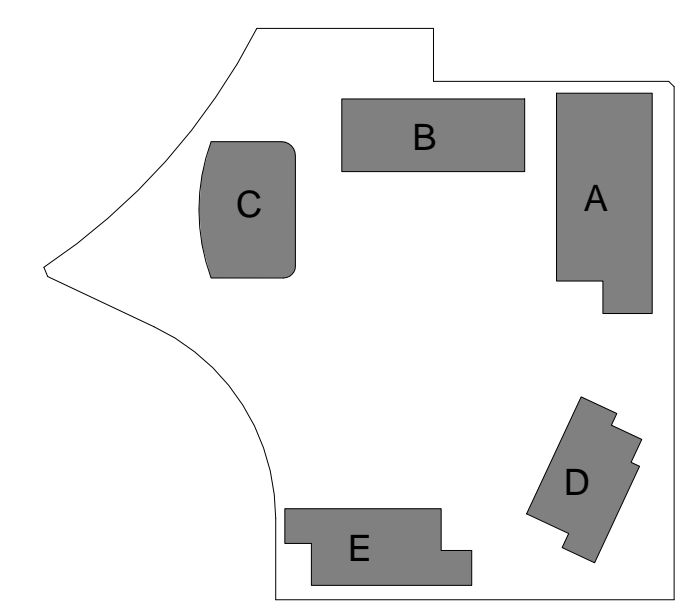


2 ELEVATION
Timbrol Avenue Elevation
1:350

In accepting and utilising this document the recipient agrees that SJB Architecture (NSW) Pty. Ltd. ACN 081 094 724 T/A SJB Architects, retain all common law, statutory law and other rights including copyright and intellectual property rights. The recipient agrees not to use this document for any purpose other than its intended use, to waive all claims against SJB Architects resulting from unauthorised changes, or to reuse the document on other projects without the prior written consent of SJB Architects. Under no circumstances shall transfer of this document be deemed a sale. SJB Architects makes no warranties of fitness for any purpose.

The Builder/Contractor shall verify job dimensions prior to any work commencing. Figured dimensions shall take precedence over scaled work.

S75W - FOR APPROVAL		
Rev.	Date	Revision
A	12/11/2010	DA Test of Adequacy
A-1	22/02/2011	Phased Project
A-2	15/04/2012	S75W MOD1 - March 2012
A-3	16/07/2012	Adaptable Parking
A-4	24/08/2012	Adaptable Parking - 3bed to 1bed
A-5	16/10/2012	S75W MOD2 - October 2012



Project
STAGE 2A + 3A
WALKER ST.
RHODES
for
Billbergia Developments

Drawing Name
Walker Street & Timbrol Avenue Elevation

Date: 22.10.2012
Scale: 1:350
Sheet Size: @ B1

Reg No. JT
Drawn: JT
Chk. JP

Job No. 4410
Drawing No. A-0501
Revision: A-5

SJB Architects
Level 2, 490 Crown St
Surry Hills NSW
2010 Australia
T 61 2 9380 9911
F 61 2 9380 9922
www.sjb.com.au

Nominated Architects
Adam Haddock 7188
John Pradel 7004