

In accepting and utilizing this document the recipient agrees that SJB Architects (NSW) Pty. Ltd. (ACN 001 004 724) SJB Architects retain all common law, statutory law and other rights including copyright and intellectual property rights. The recipient agrees not to use this document for any purpose other than the intended use. To waive all claims against SJB Architects resulting from the use of this document on their projects without the prior written consent of SJB Architects. Under no circumstances shall the use of this document be deemed to constitute an endorsement or a warranty of fitness for any purpose.

The Builder/Contractor shall verify job dimensions prior to any work commencing. Figure dimensions shall take precedence over scaled work.

S75W - FOR APPROVAL		
Rev.	Date	Revision
A	12/11/2010	DA Test of Adequacy
A-1	22/02/2011	Preferred Project
A-2	18/04/2012	S75W - March 2012



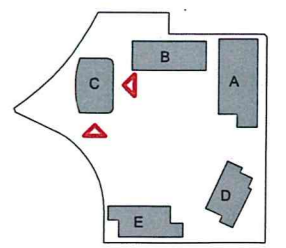
2 ELEVATION
BLDG C - SOUTH
1:200




1 ELEVATION
BLDG C - EAST
1:200

EXTERNAL FINISHES	
CONCRETE	
CR1	Concrete natural finish
CR1	Concrete render finish
FF1	Foam Finish - Crad
MASONRY	
PF1	Texture applied finish - White
PF2	Texture applied finish - Light Warm Grey
PF3	Texture applied finish - Dark Grey
ST1	Stone cladding - Stacked grey colour
ST2	Stone cladding - Sandstone Finish
GLAZING	
GL1	Clear Glass Windows
GL2	Lauzed Clear Glass Windows
GL3	Obscure Clear Glass Windows
GL4	Feature Coloured Glass
GL5	Charge glass substrate with Metal Handrail
GL6	Waterproofing
METALWORKS	
ME1	Metal balustrade - Steel Coloured
MF1	Metal Finish - Vitrane + Clear Tarnish
MF2	Metal Finish - Shading Metal
MF3	Metal Finish - Screen
MS1	Metal Finish - Flat Screwing
MS2	Metal Finish - Screen to apartment entries
TIMBER	
TC1	External cladding - Timber Boards
TE1	Timber Floor Boards - Natural Tan

NOTE: AS BUILT LEVELS MAY VARY +/- 30mm FROM NOTMINATED SSL'S



 **NSW GOVERNMENT Planning**

Issued under the Environmental Planning and Assessment Act 1979


Approved Section 75W Modification Application

No. 1 granted on the 26/5/2012

in respect to MP 10-0105

Signed [Signature]

Sheet No. 30 of 33

Client  **Billbergia**
creating communities®

Project
**STAGE 2A + 3A
WALKER ST.
RHODES**
for
Billbergia Developments

Drawing Name
**Elevations - BLDG C
East & West**


Date **18.04.2012** Scale **1:200** Sheet Size **@ B1**

Reg No. **MM/NH** Drawn **JP**

Job No. **4410** Drawing No. **A-0507** Revision **A-2**

SJB Architects
Level 2, 490 Crown St
Surry Hills NSW
2010 Australia
T 61 2 9380 9911
F 61 2 9380 9922
www.sjb.com.au

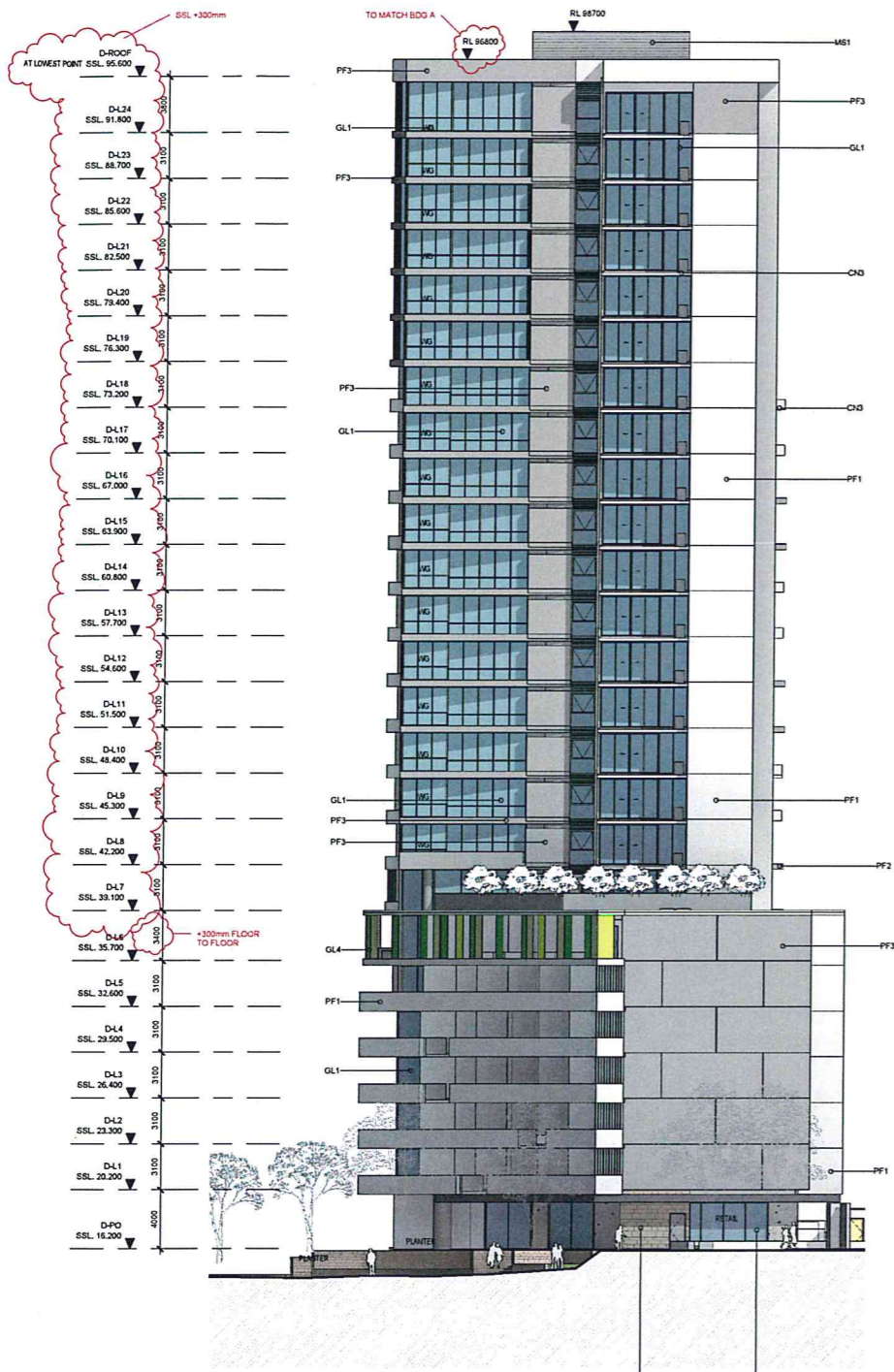
Nominated Architects
Adam Haddock 7188
John Fiddell 7704



In accepting and utilizing this document the recipient agrees that SJB Architects (NSW) Pty. Ltd. (SJB Architects) retains all common law, statutory and other rights including copyright and intellectual property rights. The recipient agrees not to use the document for any purpose other than its intended use. In the event of any dispute, the recipient agrees to indemnify SJB Architects resulting from unauthorised changes or to release the document on other projects without the prior written consent of SJB Architects. Under no circumstances shall the recipient be deemed to have accepted or agreed to any terms, conditions or warranties of fitness for any purpose.

The Recipient/Contractor shall verify all dimensions prior to any work commencing. Fitted dimensions shall take precedence over scaled work.

S75W - FOR APPROVAL		
Rev.	Date	Revision
A	12/11/2010	DA Test of Adequacy
A-1	20/02/2011	Preferred Project
A-2	15/04/2012	S75W - March 2012



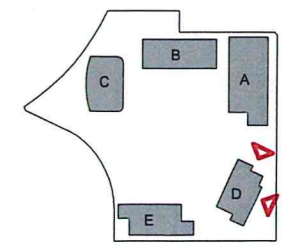
1 ELEVATION
BLDG D - NORTH
1:200



2 ELEVATION
BLDG D - EAST
1:200

EXTERNAL FINISHES	
CONCRETE	
CN1	Concrete natural finish
CN2	Concrete render finish
CF1	Red Finish - Gravel
MASONRY	
PF1	Texture applied finish - White
PF2	Texture applied finish - Light Warm Grey
PF3	Texture applied finish - Dark Grey
ST1	Stone detailing - Stacked grey colour
ST2	Stone detailing - Sandstone finish
GLAZING	
GL1	Clear Glass Windows
GL2	Louvered Clear Glass Windows
GL3	Obscure Obscure Substrate
GL4	Factory Coloured Glass
GL5	Clear glass substrate with tinted horizontal ribbing
METALWORKS	
MB1	Metal substrate - Steel Galvalume
MB2	Metal Finish - Weather - Dark Bronze
MB3	Metal Finish - Shading Blades
MB4	Metal Finish - Louvre screen
MB5	Metal Finish - Plant Screening
MB6	Metal Finish - Screen to apartment entries
ROOFING	
TC1	External detailing - Timber Beams
TB1	Timber Floor Beams - Natural Stain

NOTE: AS BUILT LEVELS MAY VARY +/- 30mm FROM NOTMATED SSL'S



Issued under the Environmental Planning and Assessment Act 1979
 Approved Section 75W Modification Application
 No. 1 granted on the 26/9/2012
 in respect to MP 10-0105
 Signed [Signature]
 Sheet No. 31 of 33



Client
 Project
 STAGE 2A + 3A
 WALKER ST.
 RHODES ST.
 for
 Billbergia Developments

Drawing Name
 Elevations - BLDG D
 North & East

Date	Scale	Sheet Size
18.04.2012	1:200	@ B1
Reg No.	Drawn	CHK.
	MM/NH	JP
Job No.	Drawing No.	Revision
4410	A-0508	A-2

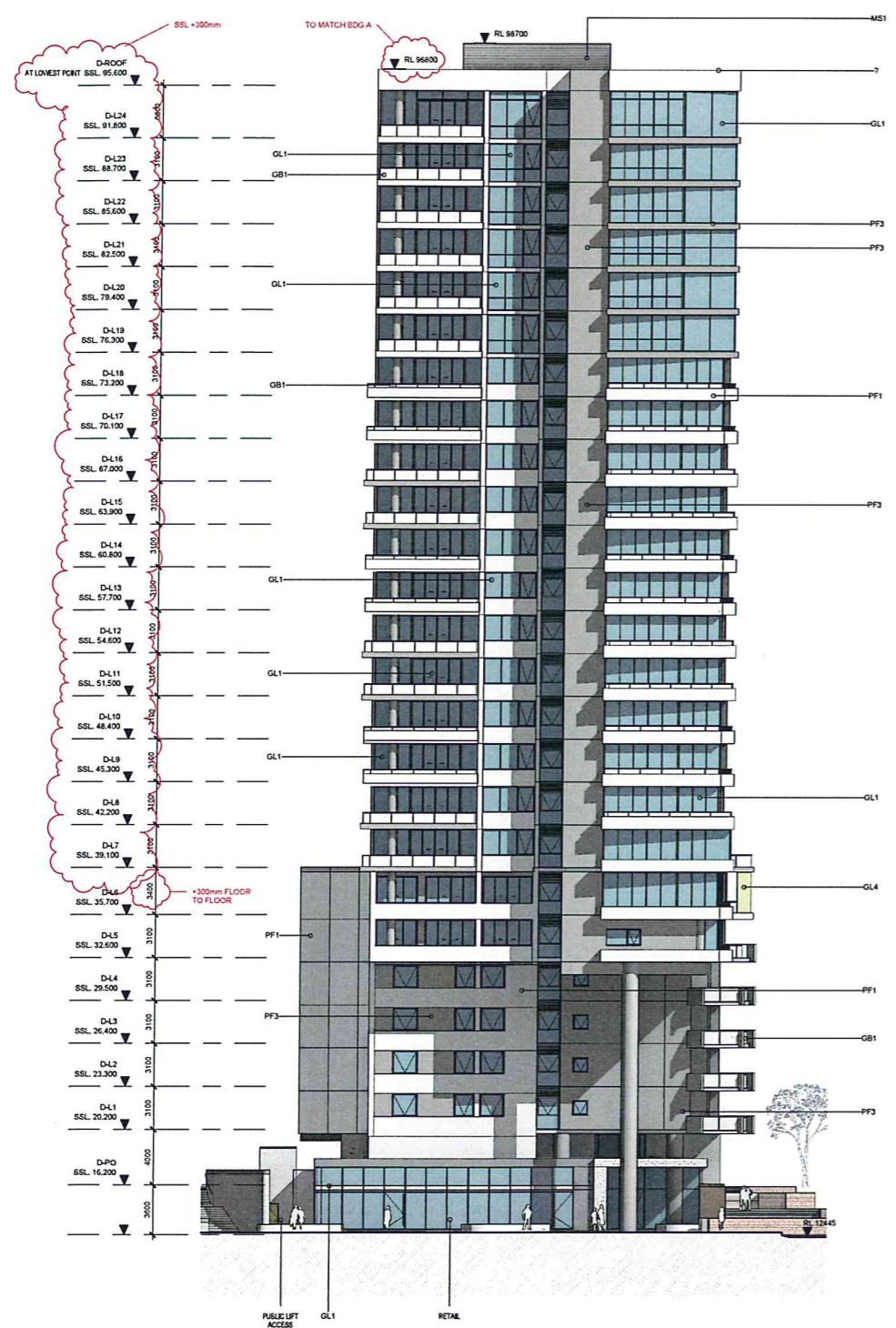
SJB Architects
 Level 2, 400 Crown St
 Surry Hills NSW
 2010 Australia
 T 61 2 9360 9911
 F 61 2 9360 9922
 www.sjb.com.au
 Nominated Architects
 Adam Haddock 7188
 John Prasad 7004



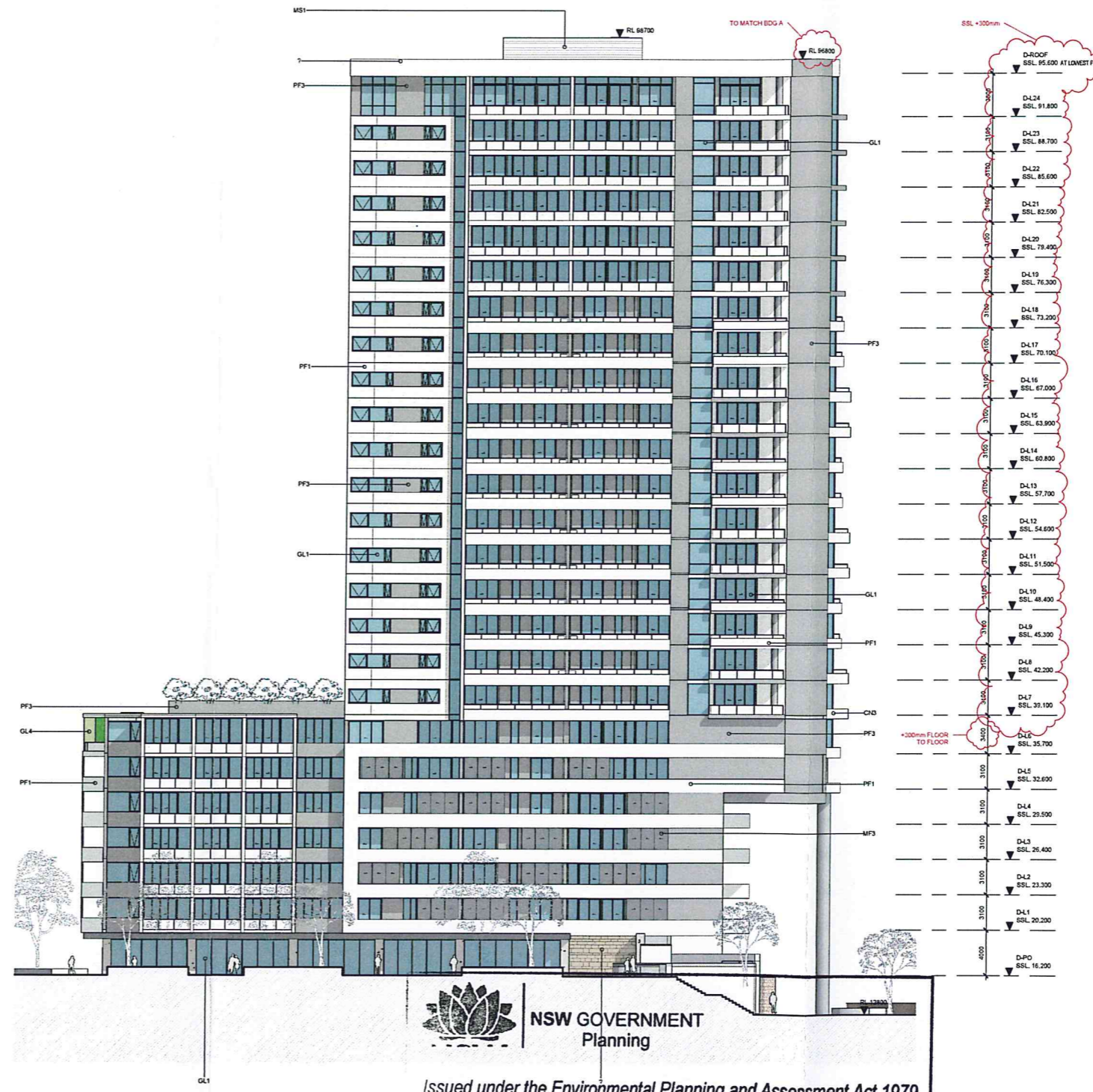
In accepting and using this document the recipient agrees that SJB Architects (NSW) Pty. Ltd. (SJB) shall retain all copyright and intellectual property rights. The recipient agrees not to use the document for any purpose other than its intended use, to make any amendments to the document or to transfer the document to any other person without the prior written consent of SJB Architects. Under no circumstances shall the recipient be liable for any loss or damage, including consequential loss or damage, arising from the use of the document for any purpose other than its intended use. SJB Architects makes no warranty of fitness for any purpose.

The Recipient/Contractor shall verify job dimensions prior to any work commencing. Figure dimensions shall take precedence over scaled work.

S75W - FOR APPROVAL		
Rev.	Date	Revision
A	12/11/2010	DA Test of Adequacy
A-1	22/02/2011	Preferred Project
A-2	15/04/2012	S75W - March 2012



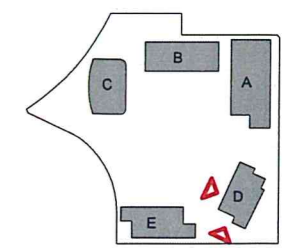
1 ELEVATION
BLDG D - SOUTH
1:200



2 ELEVATION
BLDG D - WEST
1:200

EXTERNAL FINISHES	
CONCRETE	
CH1	Concrete natural finish
CH2	Concrete render finish
CH3	Full finish - Gravel
MASONRY	
PF1	Texture applied finish - White
PF2	Texture applied finish - Light Storm Grey
PF3	Texture applied finish - Dark Grey
ST1	Stone cladding - Stacked grey colour
ST2	Stone cladding - Sandstone finish
GLASSING	
GL1	Clear Glass Windows
GL2	Laminated Clear Glass Windows
GL3	Opaque Glass Substrate
GL4	Faded Coloured Glass
GL5	Clear glass substrate with metal handrail
GL6	Waterproof
METALWORKS	
MS1	Metal substrate - Steel Coloured
MS2	Metal finish - Stainless - Clear finish
MS3	Metal finish - Brushed Metal
MS4	Metal finish - Paint Screen
MS5	Metal finish - Paint Screening
MS6	Metal finish - Screen to apartment entries
TIMBER	
TC1	External cladding - Timber Shave
TC2	Timber Floor Boards - Natural Stain

NOTE: AS BUILT LEVELS MAY VARY +/- 30mm FROM NOTMATED SSL'S



Issued under the Environmental Planning and Assessment Act 1979

Approved Section 75W Modification Application

No. 1 granted on the 26/9/2012

in respect to MP 10-0105

Signed [Signature]

Sheet No. 32 of 33



Client
Billbergia Developments

Project
STAGE 2A + 3A
WALKER ST.
RHODES
for
Billbergia Developments

Drawing Name
Elevations - BLDG D
South & West

Date 18.04.2012 Scale 1:200 Sheet Size @ B1

Rep No. Drawn CML
MM/NH JP

Job No. Drawing No. Revision
4410 A-0509 A-2

SJB Architects
Level 2, 450 Crown St
Sydney NSW
2010 Australia
T 61 2 9380 9911
F 61 2 9380 9922
www.sjb.com.au
Nominated Architects
Adam Haddock 7188
John Paskal 7004



In accepting and offering the document the recipient agrees that SJB Architects (NSW) Pty. Ltd. ACN 081 104 724 (SJB Architects) retains all common law, statutory law and other rights including copyright and intellectual property rights. The recipient agrees not to use the document for any purpose other than the intended use, to waive all claims against SJB Architects resulting from unauthorised changes, to indemnify the document on other projects without the prior written consent of SJB Architects. Under no circumstances shall transfer of the document be deemed a sale. SJB Architects makes no warranties of fitness for any purpose.

The Recipient/Contractor shall verify job dimensions prior to any work commencing. Figure dimensions shall take precedence over scaled work.

S75W - FOR APPROVAL		
Rev.	Date	Revision
A	12/11/2010	DA Test of Adequacy
A-1	22/02/2011	Preferred Project
A-2	15/04/2012	S75W - March 2012



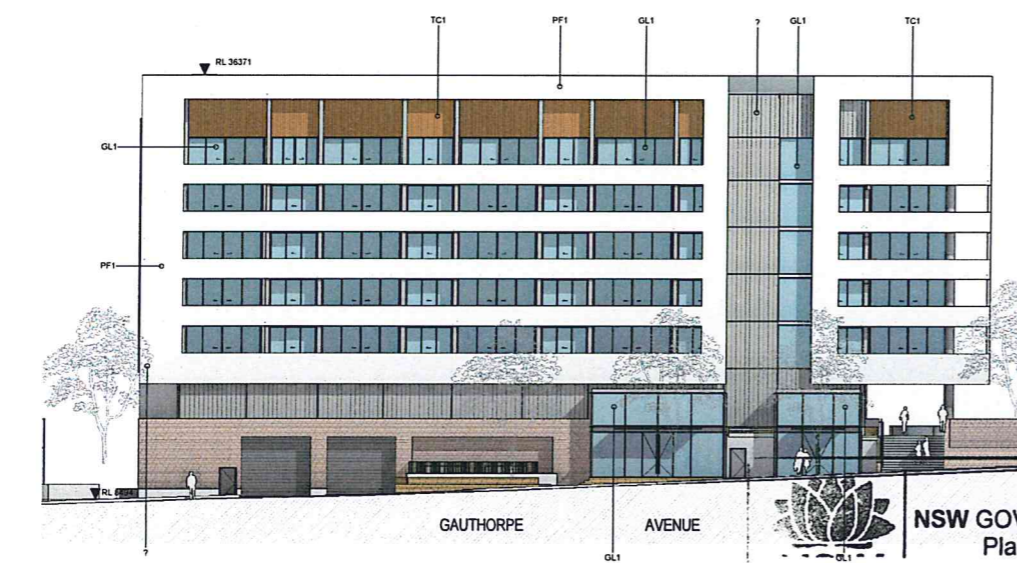
1 ELEVATION
BLDG E - NORTH
1:200



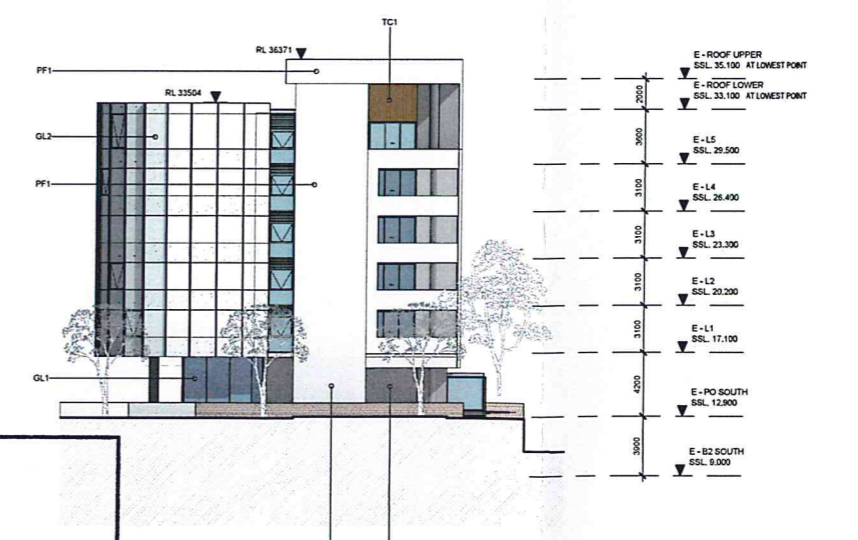
3 ELEVATION
BLDG E - EAST
1:200

EXTERNAL FINISHES	
CONCRETE	
CR1	Concrete natural finish
CR1	Concrete render finish
PF1	Full Finish - Clean
MASONRY	
PF1	Texture applied finish - White
PF2	Texture applied finish - Light Warm Grey
PF2	Texture applied finish - Dark Grey
ST1	Stone cladding - Stacked grey colour
ST2	Stone cladding - Sandstone Finish
GLAZING	
GL1	Clear Glass Windows
GL2	Laminated Clear Glass Windows
GL2	Obscure Obscure Safety Glass
GL4	Feature Coloured Glass
GL5	Clear glass balustrade with metal handrail
WG	Window
METALS	
ME1	Metal balustrade - Steel Coloured
MF1	Metal Finish - Window - Clear Frames
MF2	Metal Finish - Shading blades
MF3	Metal Finish - Louvre screen
MF3	Metal Finish - Plant Screening
MF3	Metal Finish - Screen to apartment entries
TIMBER	
TC1	External cladding - Timber Slats
TB1	Timber Floor Slats - Natural Stan

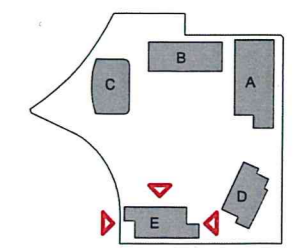
NOTE: AS BUILT LEVELS MAY VARY +/- 30mm FROM NOTMATED SSL'S



2 ELEVATION
BLDG E - SOUTH
1:200



4 ELEVATION
BLDG E - WEST
1:200



Client
Billbergia
creating communities®

Project
**STAGE 2A + 3A
WALKER ST.
RHODES**
for
Billbergia Developments

Drawing Name
**Elevations - BLDG E
North, South, East & West**

Date
18.04.2012

Scale
1:200

Sheet Size
@ B1

Reg No. **MM/NH** Drawn **JP** Ck'd **JP**

Job No. **4410** Drawing No. **A-0510** Revision **A-2**

SJB Architects
Level 2, 450 Crown St
Sunny Hills NSW
2010 Australia
T 61 2 9380 9911
F 61 2 9380 9922
www.sjb.com.au

Nominated Architects
Adam Haddock 7188
John Pradell 7004

NSW GOVERNMENT
Planning

Issued under the Environmental Planning and Assessment Act 1979

Approved Section 75W Modification Application

No. 1 granted on the 26/9/2012

in respect to MP 10-0105

Signed [Signature]

Sheet No. 33 of 33



20/09/2012 10:17 AM