

In accepting and utilizing this document the recipient agrees that SJB Architects (NSW) Pty. Ltd. ACN 081 094 724 / SJB Architects, retain all common law, statutory law and other rights including copyright and intellectual property rights. The recipient agrees not to use this document for any purpose other than its intended use, to waive all claims against SJB Architects resulting from unauthorised changes, or to reuse the document on other projects without the prior written consent of SJB Architects. Under no circumstances shall transfer of this document be deemed a sale. SJB Architects makes no warranties of fitness for any purpose.

The Builder/Contractor shall verify job dimensions prior to any work commencing. Figured dimensions shall take precedence over scaled work.

S75W - FOR APPROVAL			
Rev.	Date	Revision	
A	12/11/2010	DA Test of Adequacy	
A-1	22/02/2011	Preferred Project	
	15/04/2012	S75W - March 2012	



BASEMENT 1



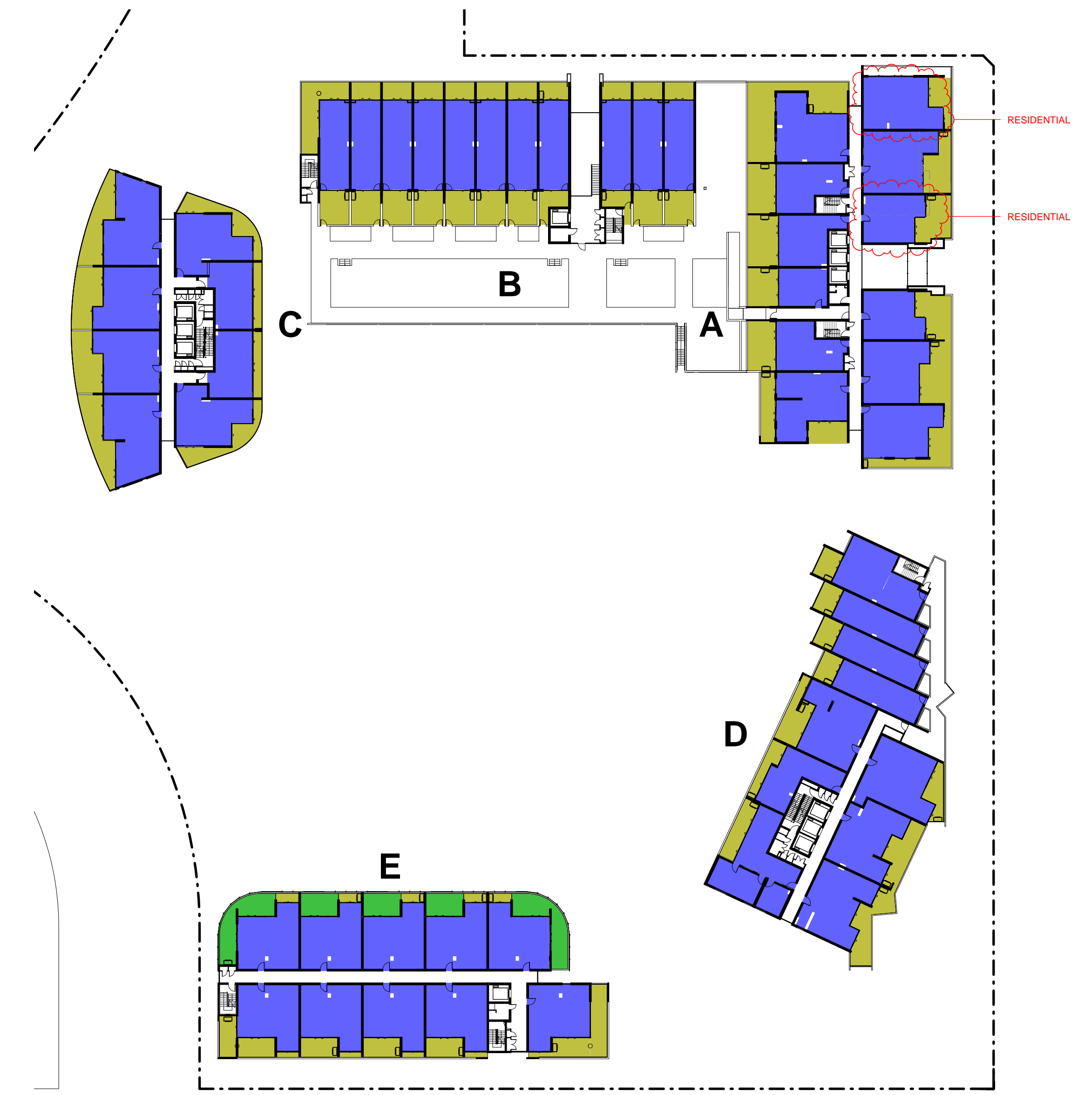
PODIUM

GFA SUMMARY

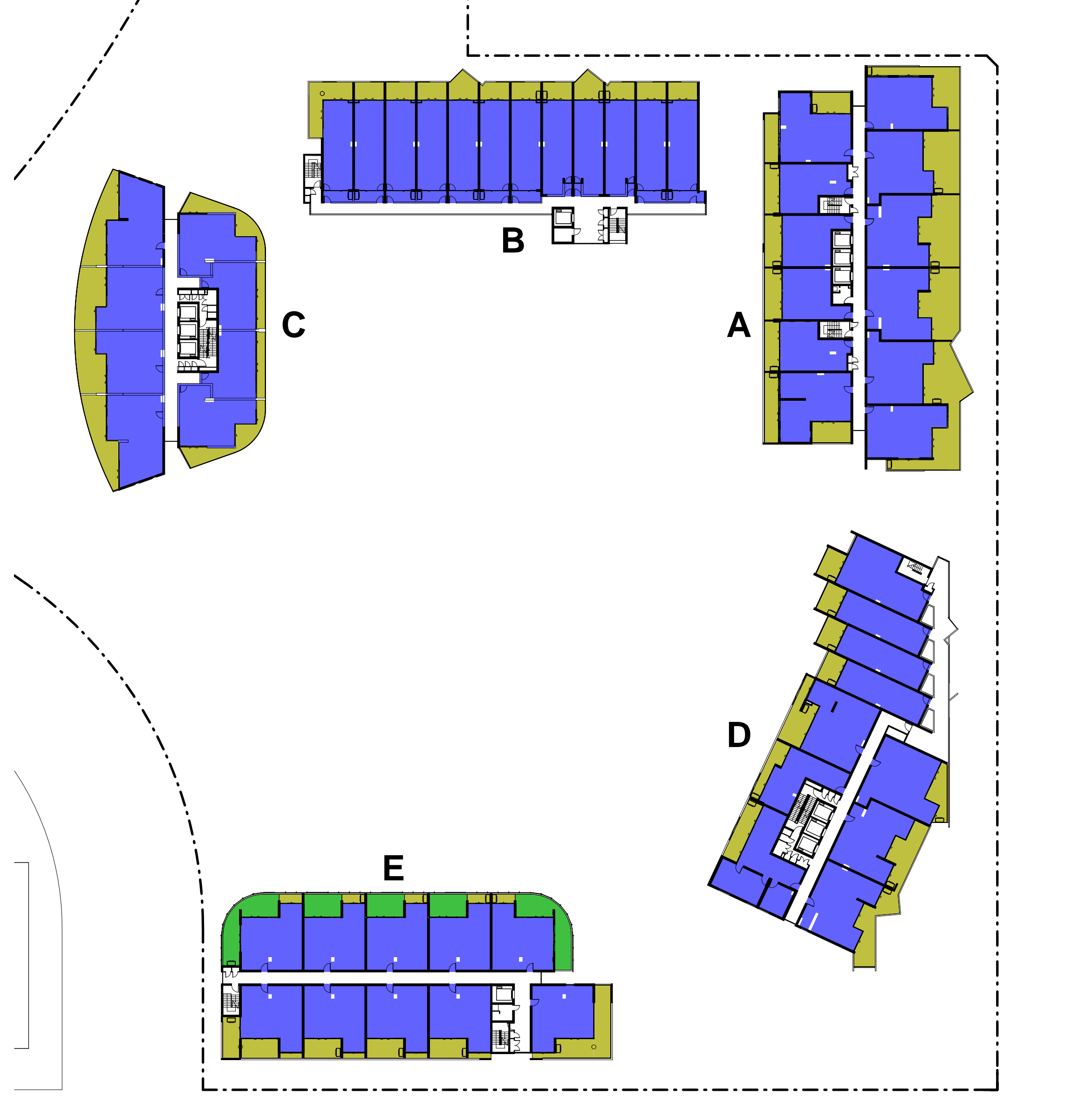
	BLDG-A		BLDG-B		BLDG-C		BLDG-D		BLDG-E	
	GFA	GFA RES	GFA RES	GFA RES	GFA	GFA RES	GFA	GFA RES	GFA	GFA RES
BASE -02										
BASE -01										
PODIUM	85	106	433	613	478					758
LEVEL-01	843	638	613		783					
LEVEL-02	911	696	613		783					758
LEVEL-03	911	696	613		783					758
LEVEL-04	911	696	613		783					758
LEVEL-05	911	696	613		902					
LEVEL-06	911	696	613		902					
LEVEL-07	752		613		646					
LEVEL-08	752		613		646					
LEVEL-09	752		613		632					
LEVEL-10	752		613		632					
LEVEL-11	752		613		632					
LEVEL-12	752		613		632					
LEVEL-13	750		613		632					
LEVEL-14	750		613		632					
LEVEL-15	750		610		632					
LEVEL-16	748		610		632					
LEVEL-17	748		610		632					
LEVEL-18	748		610		632					
LEVEL-19	747		610		629					
LEVEL-20	747		610		626					
LEVEL-21	747		610		626					
LEVEL-22	747		610		626					
LEVEL-23	747		610		626					
LEVEL-24	747		610		626					
TOTAL	485	18992	3855	12245	478	16307	385	3790		

GFA SUMMARY
 Residential GFA Available: 54936 sqm
 Retail GFA Minimum: 1050 sqm
TOTAL GFA: 55986 sqm

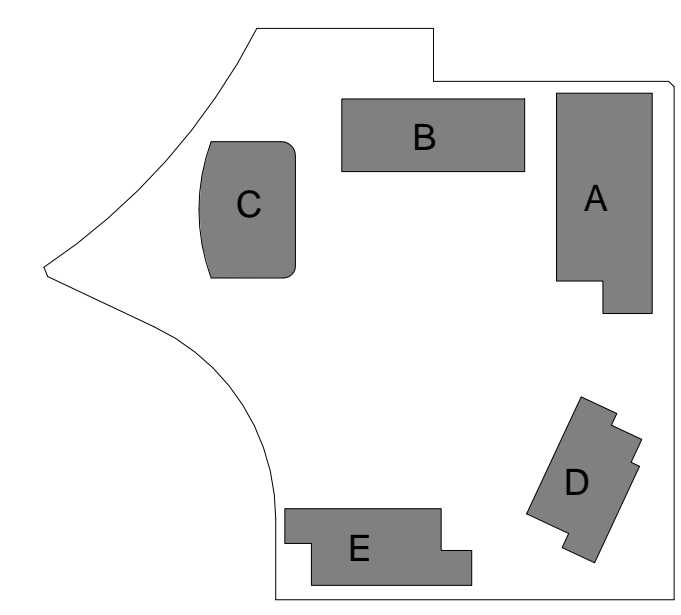
Residential GFA Proposed: 55189 sqm
 Retail GFA Proposed: 1348 sqm
TOTAL GFA Proposed: 56537 sqm



LEVEL 1



LEVEL 2-4



Project
STAGE 2A + 3A
WALKER ST.
RHODES
 for
 Billbergia Developments

Drawing Name
Area Calculations - GFA

Date: 18.04.2012
 Scale: 1 : 500
 Sheet Size: @ B1

Reg No. Drawn: JT/NH
 Chk. JP

Job No. Drawing No. Revision
4410 A-0221 A-2

SJB Architects
 Level 2, 490 Crown St
 Surry Hills NSW
 2010 Australia
 T 61 2 9380 9911
 F 61 2 9380 9922
 www.sjb.com.au

Nominated Architects
 Adam Haddock 7188
 John Pradel 7004