

In accepting and utilising this document the recipient agrees that SJB Architects (NSW) Pty. Ltd. ACN 081 094 724 / SJB Architects, retain all common law, statutory law and other rights including copyright and intellectual property rights. The recipient agrees not to use this document for any purpose other than its intended use. To waive all claims against SJB Architects resulting from unauthorised changes, or to reuse the document on other projects without the prior written consent of SJB Architects. Under no circumstances shall transfer of this document be deemed a sale. SJB Architects makes no warranties of fitness for any purpose.

The Builder/Contractor shall verify job dimensions prior to any work commencing. Figured dimensions shall take precedence over scaled work.

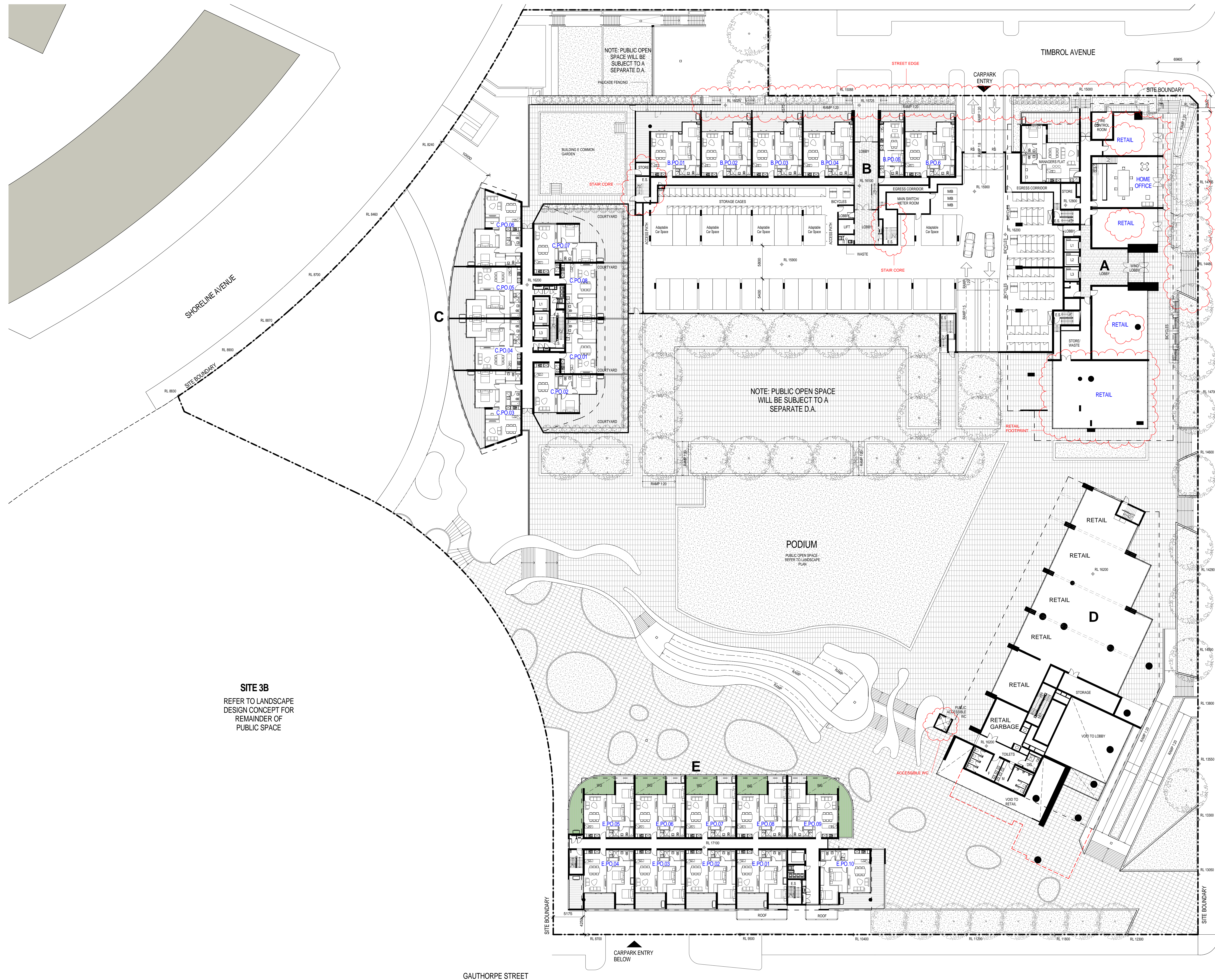
Rev.	Date	Revision
A	12/11/2010	DA Test of Adequacy
A-1	22/02/2011	Preferred Project
A-2	15/04/2012	S75W - March 2012

NOTE:
ALL INTERNAL RL'S REPRESENT STRUCTURAL SLAB LEVEL TYPICALLY.

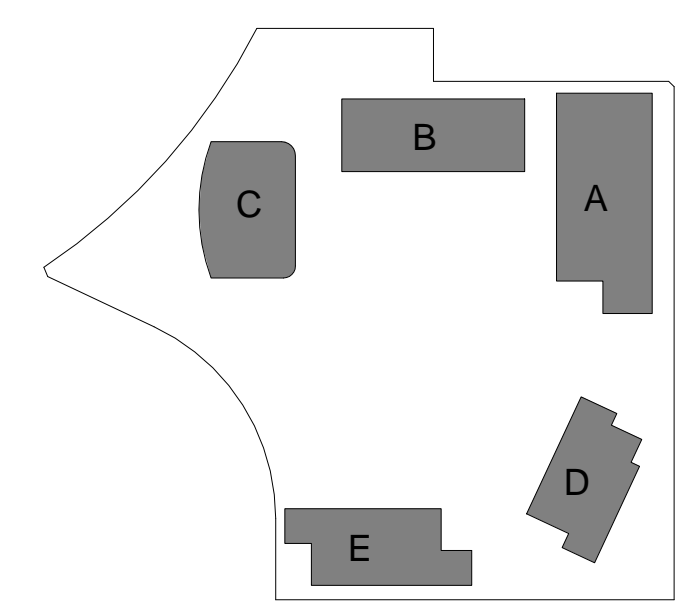
NOTE:
CHANGE TO SITE LANDSCAPE AS PER OCULUS DESIGN MARCH 2011.

PARKING SCHEDULE - PODIUM	
PARKING TYPE	NUMBER
Standard Residential	29
Adaptable Residential	5
Motorbike	3
TOTAL	37

VQ2 CARPARKING ALLOCATIONS				
LEVEL	B2	B1	00	TOTAL
STANDARD RESIDENTIAL	350	281	29	660
ADAPTABLE RESIDENTIAL	40	30	5	75
VISITOR	30	-	-	30
MOTORCYCLE	2	2	3	7
RETAIL	13	9	-	22
TOTAL SPACES	435	322	37	794



SITE 3B
REFER TO LANDSCAPE DESIGN CONCEPT FOR REMAINDER OF PUBLIC SPACE



Project
STAGE 2A + 3A
WALKER ST.
RHODES
for Billbergia Developments

Drawing Name
Podium Plan

Date: 18.04.2012
Scale: 1 : 250
Sheet Size: @ B1

Reg No. Drawn: BS/NH
Chk. JP

Job No. Drawing No. Revision
4410 A-0203 A-2

SJB Architects
Level 2, 490 Crown St
Surry Hills NSW
2010 Australia
T 61 2 9380 9911
F 61 2 9380 9922
www.sjb.com.au

Nominated Architects
Adam Haddock 7188
John Pradel 7004

20/04/2012 3:11:59 PM

GAUTHORPE STREET