

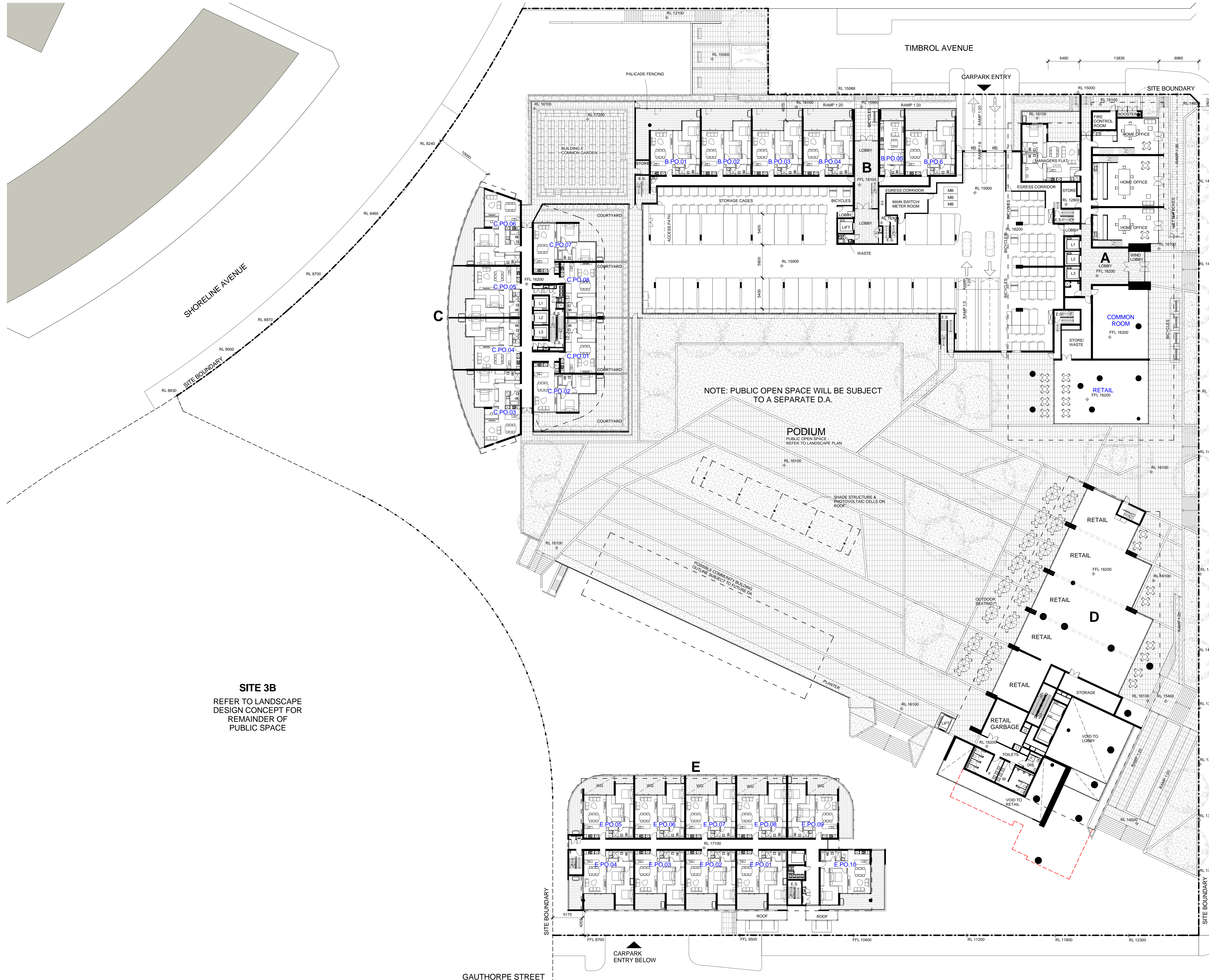
In accepting and utilizing this document the recipient agrees that SJB Architects (NSW) Pty. Ltd. ACN 081 094 724 (SJB Architects) retain all common law, statutory law and other rights including copyright and intellectual property rights. The recipient agrees not to use this document for any purpose other than its intended use, to waive all claims against SJB Architects resulting from unauthorised changes, or to reuse the document on other projects without the prior written consent of SJB Architects. Under no circumstances shall transfer of this document be deemed a sale. SJB Architects makes no warranties of fitness for any purpose.

The Builder/Contractor shall verify job dimensions prior to any work commencing. Figured dimensions shall take precedence over scaled work.

Rev.	Date	Revision
A	12/11/2010	DA Test of Adequacy
A-1	22/02/2011	Preferred Project

PARKING SCHEDULE - PODIUM	
PARKING TYPE	NUMBER
Adaptable Car Space	5
Standard Car Space	29
TOTAL	34

PARKING TYPE	NUMBER
Motor Bike Space	3
TOTAL	3

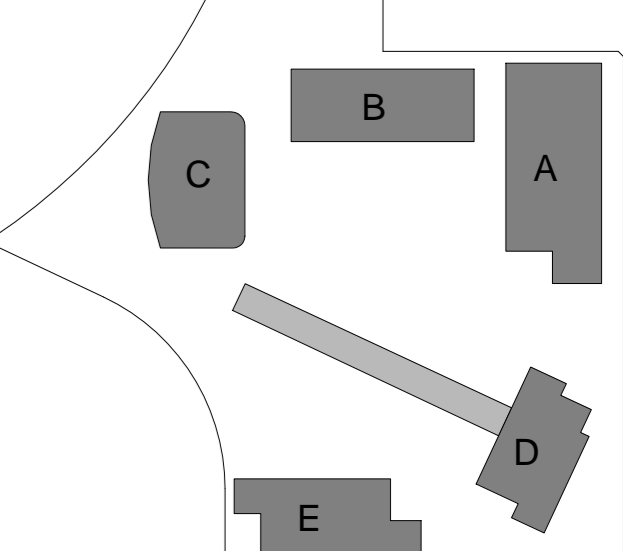


NOTE: PUBLIC OPEN SPACE WILL BE SUBJECT TO A SEPARATE D.A.

PODIUM
PUBLIC OPEN SPACE
REFER TO LANDSCAPE PLAN

SITE 3B
REFER TO LANDSCAPE DESIGN CONCEPT FOR REMAINDER OF PUBLIC SPACE

WALKER STREET



Project
STAGE 2A + 3A
WALKER ST.
RHODES
for
Billbergia Developments

Drawing Name
Podium Plan

Date: 08/12/10 Scale: 1 : 250 Sheet Size: @ B1

Reg No. BS/NH Drawn: JP Chk.

Job No. 4410 Drawing No. A-0203 Revision: A-1

SJB Architects
Level 2, 490 Crown St
Surry Hills NSW
2010 Australia
T 61 2 9380 9811
F 61 2 9380 9822
www.sjb.com.au
Non-variant Architects
Adam Haddock 7188
John Pradel 7004



08/02/2011 10:57 AM