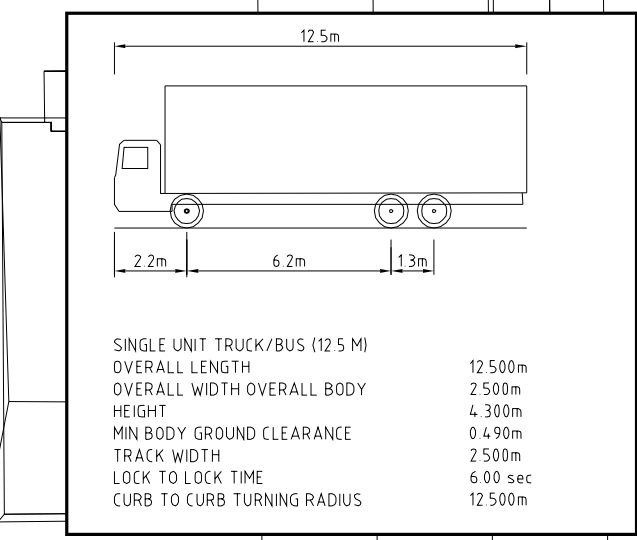
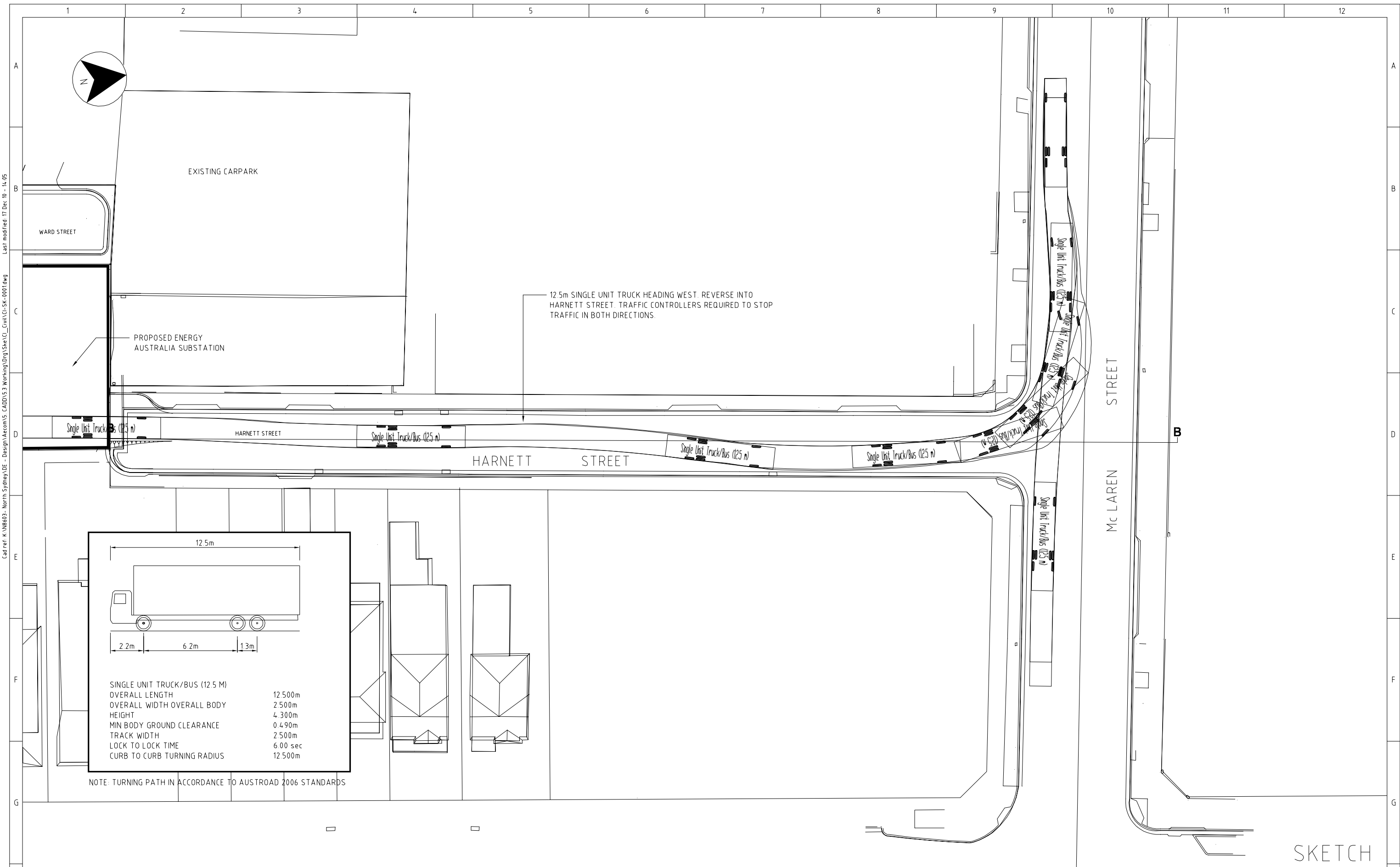




# APPENDIX H – VEHICLE SWEEP PATH DIAGRAMS

---





NOTE: TURNING PATH IN ACCORDANCE TO AUSTRROAD 2006 STANDARDS

Cadref: K:\NB03 - North Sydney,DE - Design\Aecom\5 - CAD\53 Working\Drawg\She\Ci-Sk-001.dwg Last modified: 17 Dec 10 - 14:05

CAD DRAWING DO NOT MANUALLY AMEND AMENDMENTS
REVISION A DESCRIPTION FOR INFORMATION ONLY DRAWN: CYP DATE: 17.12.10 APPROVED BY: D. MORRISON
REVISION B DESCRIPTION FOR INFORMATION ONLY DRAWN: CYP DATE: 17.12.10 APPROVED BY: JPOOL

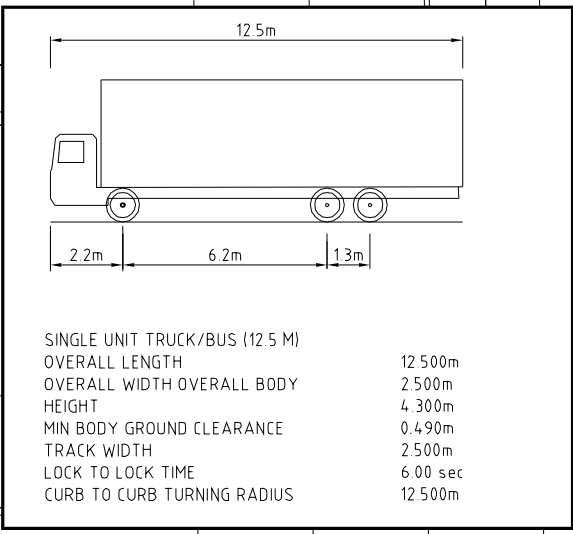
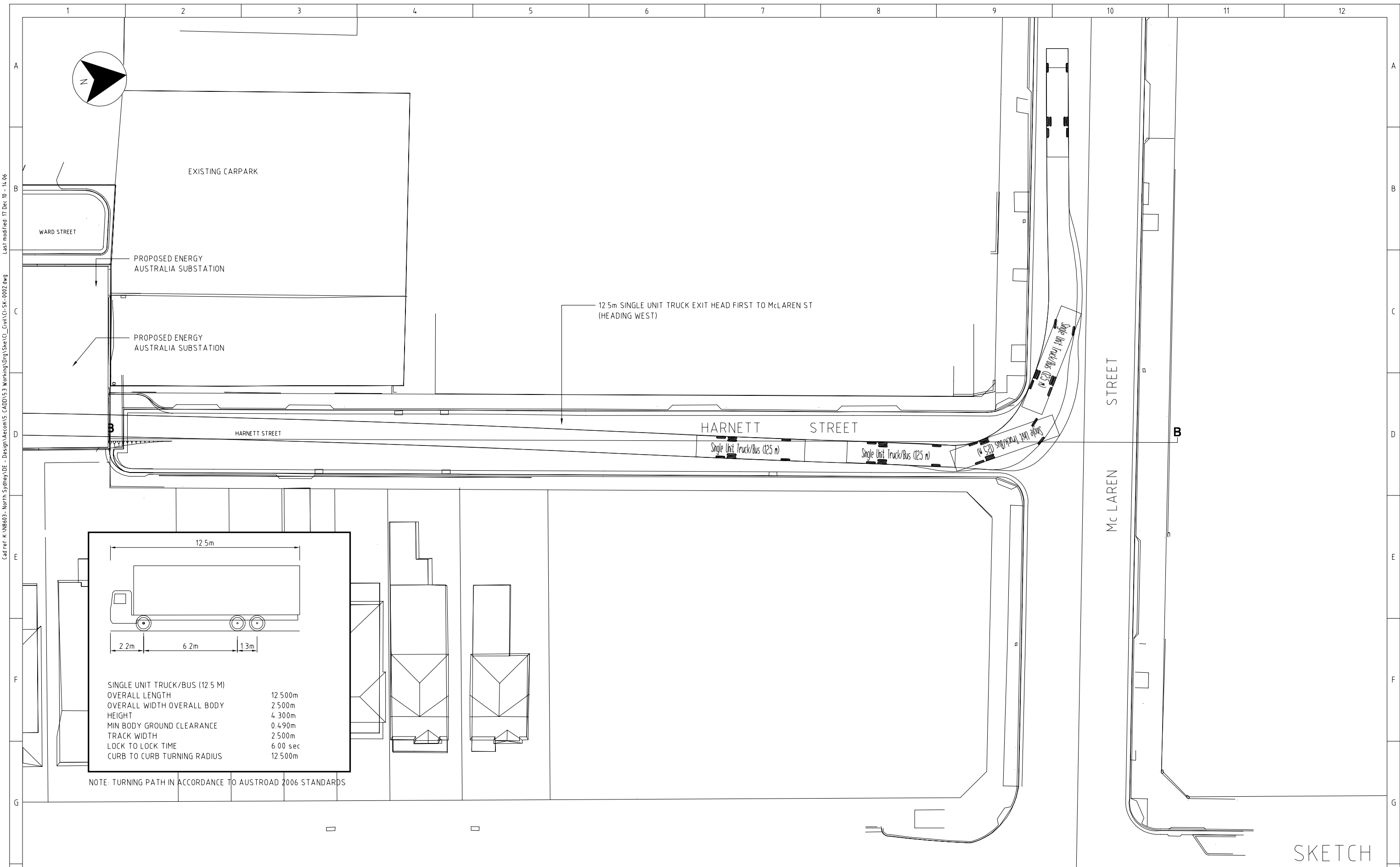
DESIGNER

DESIGN AND ENGINEERING BRANCH  
24 CAMPBELL ST SYDNEY, NSW 2000

DESIGN AND ENGINEERING BRANCH  
24 CAMPBELL ST SYDNEY, NSW 2000

SCALE	1:200
DESIGNED	J.PANG (E2U)
DRAWN	C.YIP (E2U)
CHECKED	D.MORRISON (E2U)
APPROVED	J.POOL (E2U)
DATE	17.12.10
PRJTRK No	
PROJECT NUMBER	207748

ZN 2473 NORTH SYDNEY CIVIL			
12.5m SINGLE UNIT TRUCK TURNING PATH REVERSE			
DRAWING No	CI-SK-0001	SHEET	1
AMD	B	SIZE	A1



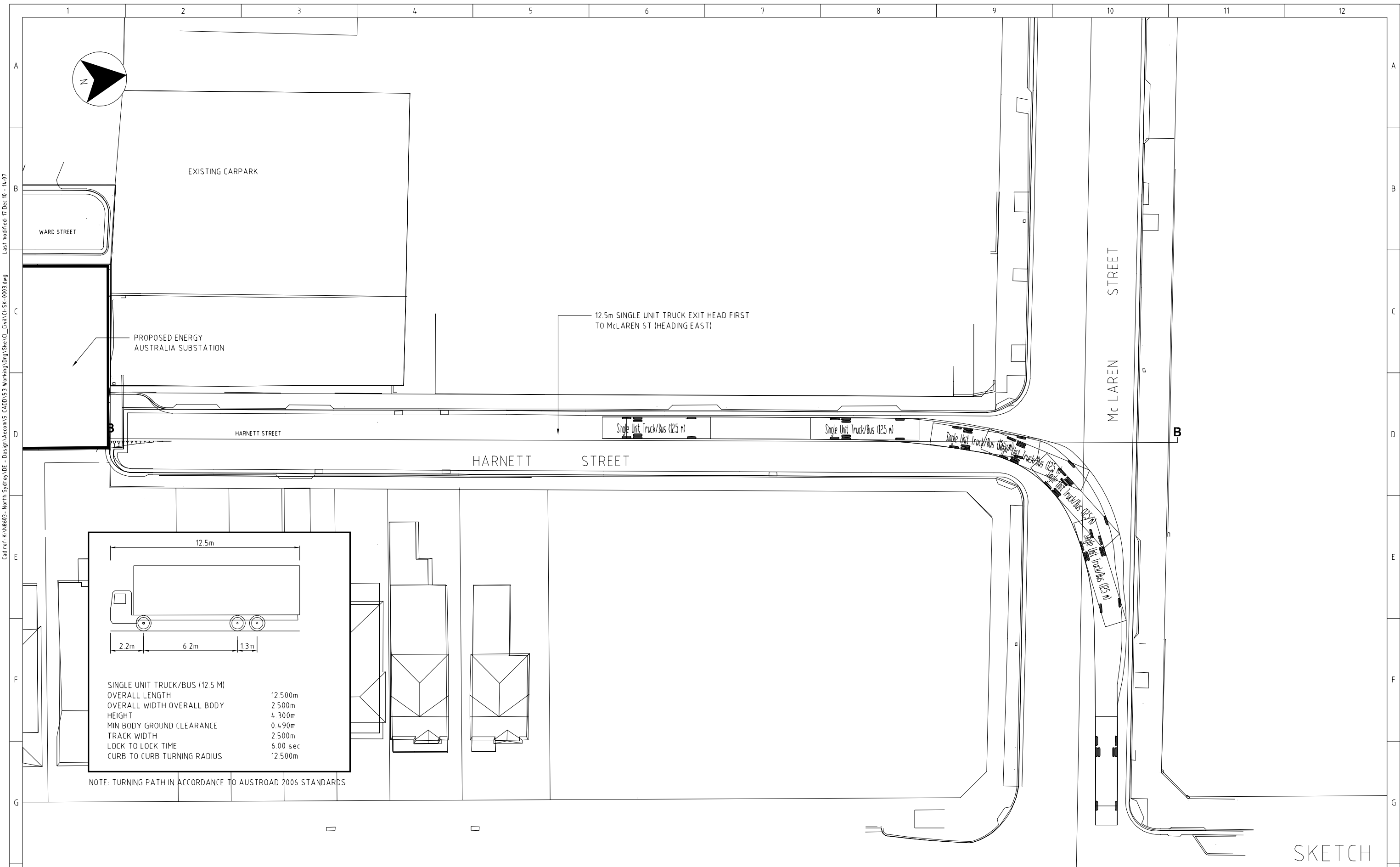
SINGLE UNIT TRUCK/BUS (12.5 M)	
OVERALL LENGTH	12 500m
OVERALL WIDTH OVERALL BODY	2 500m
HEIGHT	4 300m
MIN BODY GROUND CLEARANCE	0 490m
TRACK WIDTH	2 500m
LOCK TO LOCK TIME	6 00 sec
CURB TO CURB TURNING RADIUS	12 500m

NOTE: TURNING PATH IN ACCORDANCE TO AUSTRROAD 2006 STANDARDS

SKETCH

<p>CAD DRAWING DO NOT MANUALLY AMEND AMENDMENTS</p> <p>REVISION A DESCRIPTION FOR INFORMATION ONLY DRAWN: CYP DATE: 17.12.10 APPROVED BY: D. MORRISON</p> <p>REVISION B DESCRIPTION FOR INFORMATION ONLY DRAWN: CYP DATE: 17.12.10 APPROVED BY: JPOOL</p>	<p>DESIGNER</p>	<p>DESIGN AND ENGINEERING BRANCH 24 CAMPBELL ST SYDNEY, NSW 2000</p>	<table border="1" style="width:100%; border-collapse: collapse;"> <tr><td>SCALE</td><td>1:200</td></tr> <tr><td>DESIGNED</td><td>J.PANG (E2U)</td></tr> <tr><td>DRAWN</td><td>C.YIP (E2U)</td></tr> <tr><td>CHECKED</td><td>D.MORRISON (E2U)</td></tr> <tr><td>APPROVED</td><td>J.POOL (E2U)</td></tr> <tr><td>DATE</td><td>17.12.10</td></tr> <tr><td>PRJTRK No</td><td></td></tr> <tr><td>PROJECT NUMBER</td><td>207748</td></tr> </table>	SCALE	1:200	DESIGNED	J.PANG (E2U)	DRAWN	C.YIP (E2U)	CHECKED	D.MORRISON (E2U)	APPROVED	J.POOL (E2U)	DATE	17.12.10	PRJTRK No		PROJECT NUMBER	207748	<p>ZN 2473 NORTH SYDNEY CIVIL 12.5m SINGLE UNIT TRUCK TURNING PATH FORWARD</p>
SCALE	1:200																			
DESIGNED	J.PANG (E2U)																			
DRAWN	C.YIP (E2U)																			
CHECKED	D.MORRISON (E2U)																			
APPROVED	J.POOL (E2U)																			
DATE	17.12.10																			
PRJTRK No																				
PROJECT NUMBER	207748																			
<table border="1" style="width:100%; border-collapse: collapse;"> <tr> <td>DRAWING No</td> <td>CI-SK-0002</td> <td>SHEET</td> <td>1</td> <td>AMD</td> <td>B</td> <td>SIZE</td> <td>A1</td> </tr> </table>				DRAWING No	CI-SK-0002	SHEET	1	AMD	B	SIZE	A1									
DRAWING No	CI-SK-0002	SHEET	1	AMD	B	SIZE	A1													

Cad ref: K:\N8603 - North Sydney\DE - Design\Aecom\5 - CAD\053 Working\Drwg\Skes\CI-SK-0002.dwg  
 Last modified: 17 Dec 10 - 1c 06



Cad ref: K:\N8603 - North Sydney\DE - Design\Acrom\5 - CAD\053 - Working\Drwg\Sks\CI-SK-0003.dwg  
 Last modified: 17 Dec 10 - 14:07

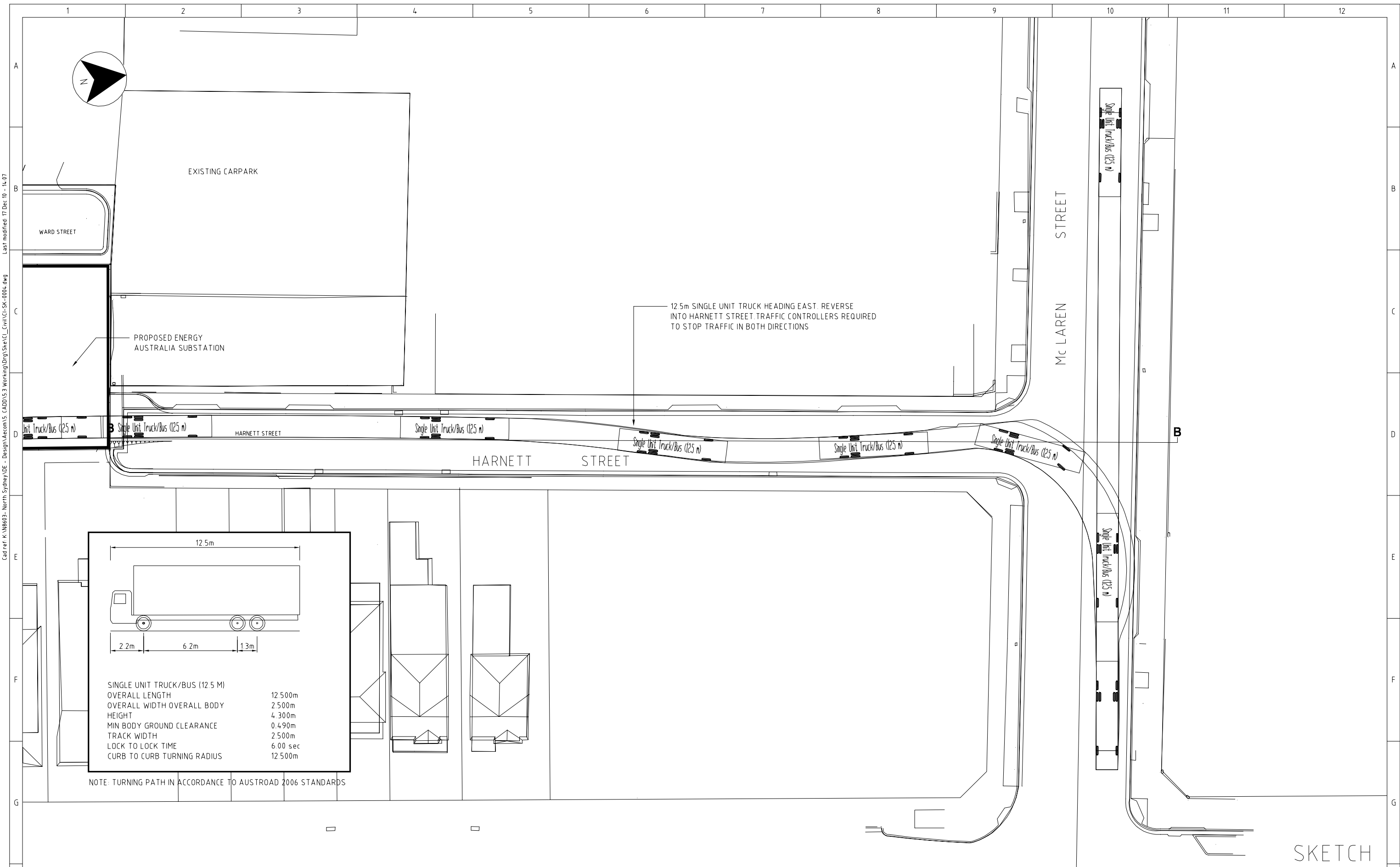
CAD DRAWING DO NOT MANUALLY AMEND AMENDMENTS	
REVISION A	DESCRIPTION FOR INFORMATION ONLY
DRAWN: CYP	DATE: 17/12/10
APPROVED BY: D. MORRISON	
REVISION B	DESCRIPTION FOR INFORMATION ONLY
DRAWN: CYP	DATE: 17/12/10
APPROVED BY: JPOOL	

DESIGNER

DESIGN AND ENGINEERING BRANCH  
24 CAMPBELL ST SYDNEY, NSW 2000

SCALE	1:200
DESIGNED	J.PANG (E2U)
DRAWN	C.YIP (E2U)
CHECKED	D.MORRISON (E2U)
APPROVED	J.POOL (E2U)
DATE	17.12.10
PRJTRK No	

ZN 2473 NORTH SYDNEY CIVIL 12.5m SINGLE UNIT TRUCK TURNING PATH FORWARD			
PROJECT NUMBER	207748	DRAWING No	CI-SK-0003
SHEET	1	AMD	B
SIZE	A1		



Caldref: K:\N6803 - North Sydney\DE - Design\Acrom\5 - CAD\05 3 Working\Drwg\Sks\CI-SK-004.dwg  
 Last modified: 17 Dec 10 - 14:07

CAD DRAWING DO NOT MANUALLY AMEND AMENDMENTS	
REVISION: A	DESCRIPTION:
FOR INFORMATION ONLY	DRAWN: CYP
DATE: 17.12.10	APPROVED BY: D. MORRISON
REVISION: B	DESCRIPTION:
FOR INFORMATION ONLY	DRAWN: CYP
DATE: 17.12.10	APPROVED BY: J. POOL

DESIGNER:

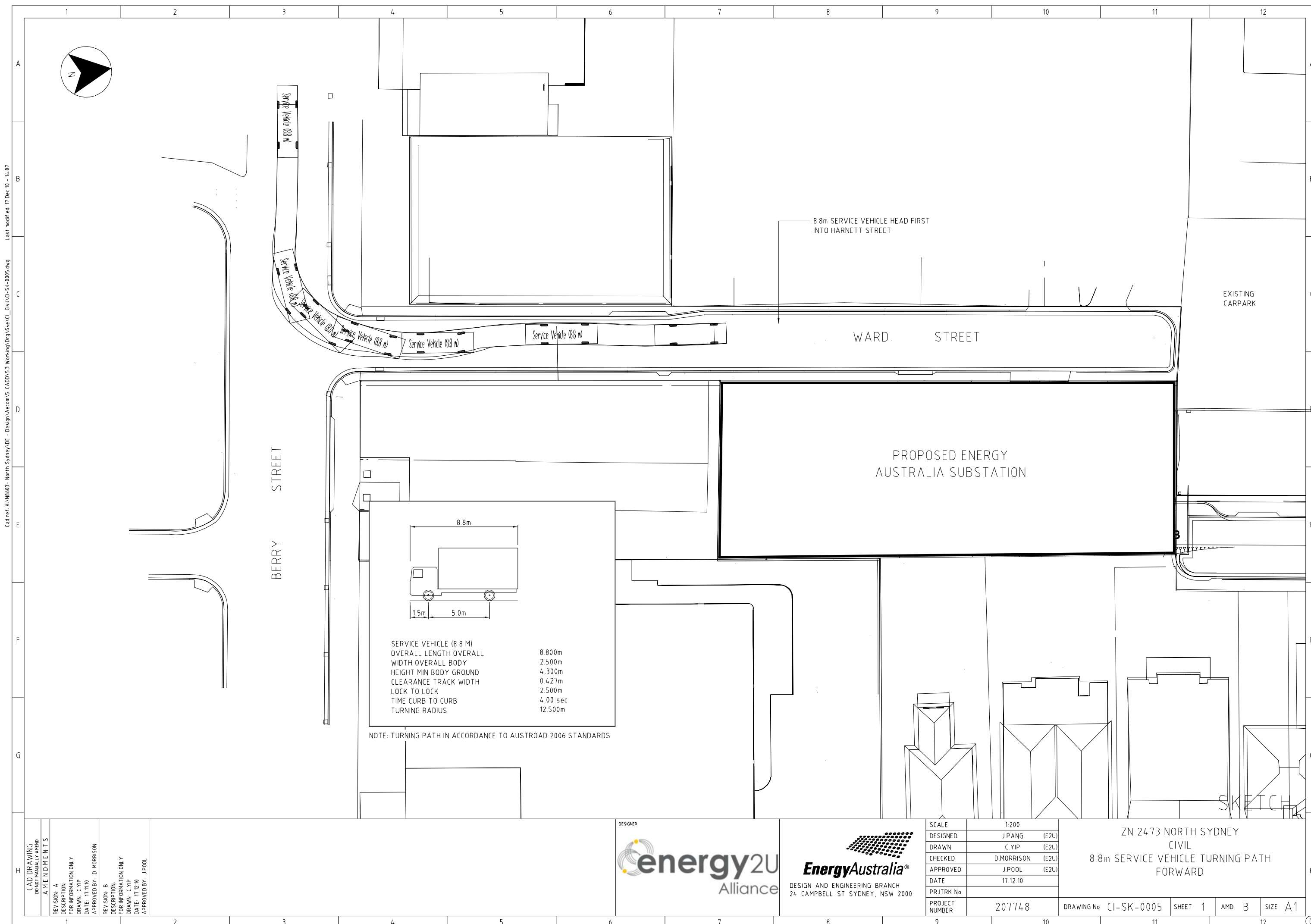
DESIGN AND ENGINEERING BRANCH  
24 CAMPBELL ST SYDNEY, NSW 2000

DESIGN AND ENGINEERING BRANCH  
24 CAMPBELL ST SYDNEY, NSW 2000

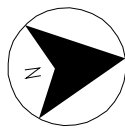
SCALE	1:200
DESIGNED	J. PANG (E2U)
DRAWN	C. YIP (E2U)
CHECKED	D. MORRISON (E2U)
APPROVED	J. POOL (E2U)
DATE	17.12.10
PRJTRK No	

ZN 2473 NORTH SYDNEY CIVIL 12.5m SINGLE UNIT TRUCK TURNING PATH REVERSE			
PROJECT NUMBER	207748	DRAWING No	CI-SK-0004
SHEET	1	AMD	B
SIZE	A1		

SKETCH



Cadref: K:\N8603 - North Sydney\DE - Design\Aecom\5 - CAD\05 3 Working\Drwg\Sheets\CI-SK-005.dwg  
 Last modified: 17 Dec 10 - 14:07

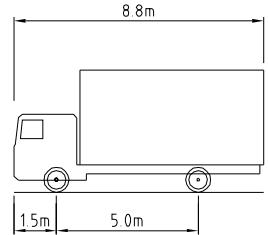


BERRY STREET

WARD STREET

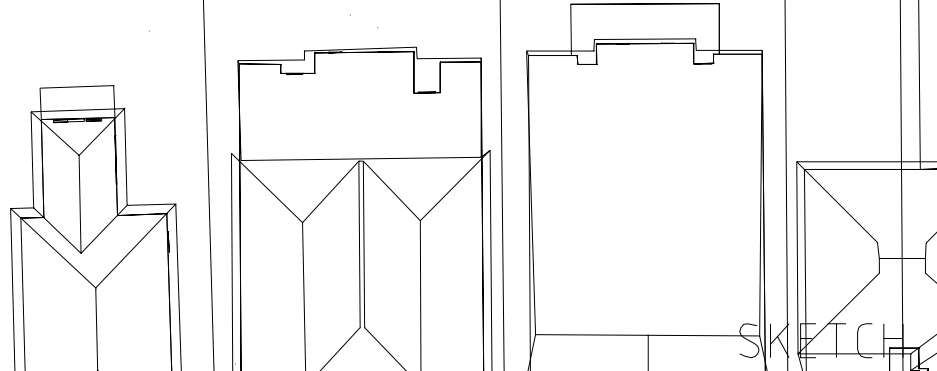
PROPOSED ENERGY AUSTRALIA SUBSTATION

EXISTING CARPARK



SERVICE VEHICLE (8.8 M)	
OVERALL LENGTH OVERALL	8.800m
WIDTH OVERALL BODY	2.500m
HEIGHT MIN BODY GROUND	4.300m
CLEARANCE TRACK WIDTH	0.427m
LOCK TO LOCK	2.500m
TIME CURB TO CURB	4.00 sec
TURNING RADIUS	12.500m

NOTE: TURNING PATH IN ACCORDANCE TO AUSTRROAD 2006 STANDARDS



CAD DRAWING DO NOT MANUALLY AMEND	
AMENDMENTS	
REVISION A	
DESCRIPTION	
FOR INFORMATION ONLY	
DRAWN: CYP	
DATE: 17.12.10	
APPROVED BY: D. MORRISON	
REVISION B	
DESCRIPTION	
FOR INFORMATION ONLY	
DRAWN: CYP	
DATE: 17.12.10	
APPROVED BY: JPOOL	

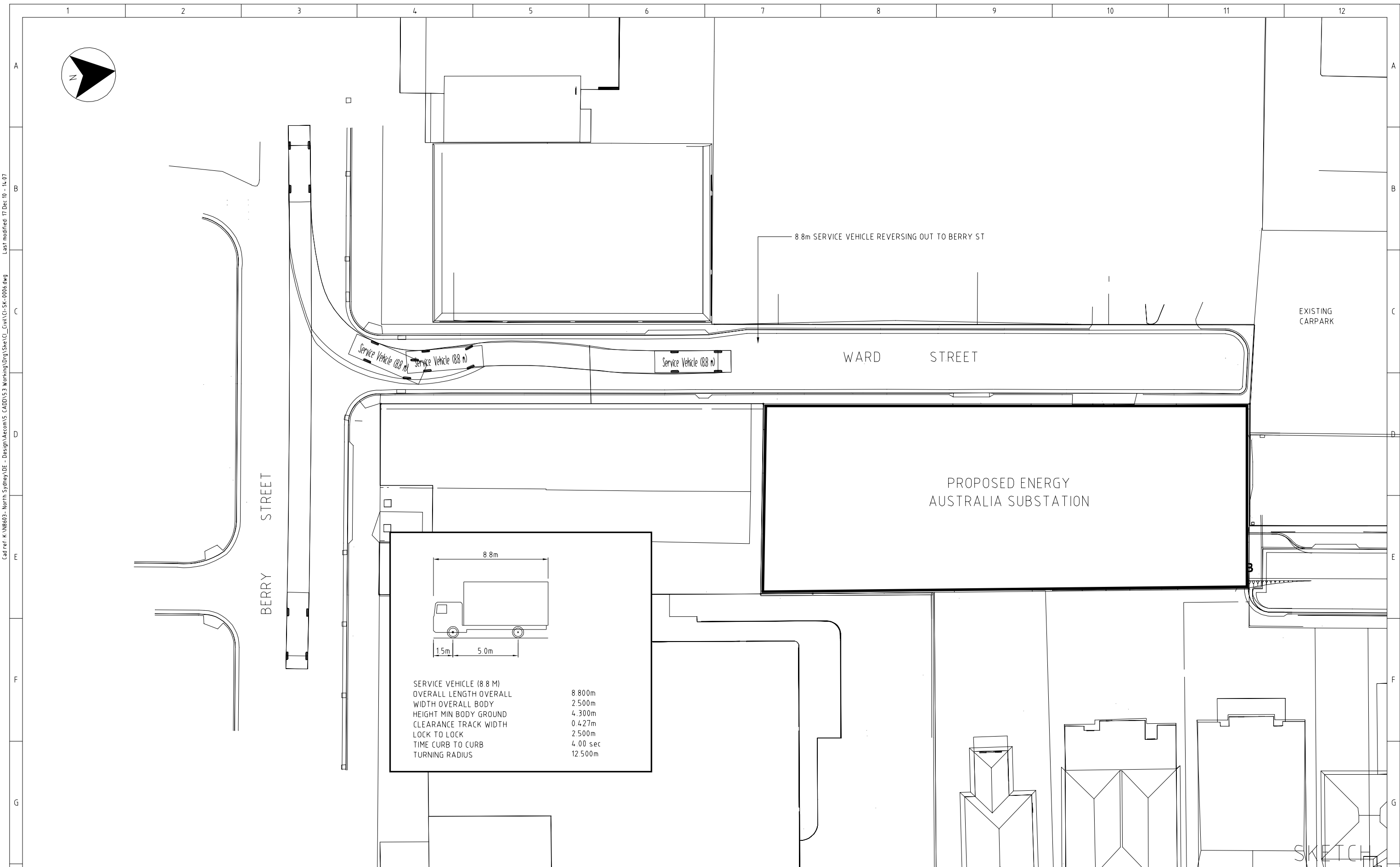
DESIGNER:

DESIGN AND ENGINEERING BRANCH  
24 CAMPBELL ST SYDNEY, NSW 2000

SCALE	1:200
DESIGNED	J.PANG (E2U)
DRAWN	C.YIP (E2U)
CHECKED	D.MORRISON (E2U)
APPROVED	J.POOL (E2U)
DATE	17.12.10
PRJTRK No	
PROJECT NUMBER	207748

ZN 2473 NORTH SYDNEY  
CIVIL  
8.8m SERVICE VEHICLE TURNING PATH  
FORWARD

DRAWING No	CI-SK-005	SHEET	1	AMD	B	SIZE	A1
------------	-----------	-------	---	-----	---	------	----



CAD DRAWING  
DO NOT MANUALLY AMEND  
AMENDMENTS

REVISION A	
DESCRIPTION	
FOR INFORMATION ONLY	
DRAWN C.YIP	
DATE 17.12.10	
APPROVED BY: D.MORRISON	
REVISION B	
DESCRIPTION	
FOR INFORMATION ONLY	
DRAWN C.YIP	
DATE 17.12.10	
APPROVED BY: J.POOL	

DESIGNER

DESIGN AND ENGINEERING BRANCH  
24 CAMPBELL ST SYDNEY, NSW 2000

SCALE	1:200
DESIGNED	J.PANG (E2U)
DRAWN	C.YIP (E2U)
CHECKED	D.MORRISON (E2U)
APPROVED	J.POOL (E2U)
DATE	17.12.10
PRJTRK No	

ZN 2473 NORTH SYDNEY  
CIVIL  
8.8m SERVICE VEHICLE TURNING PATH  
REVERSE

PROJECT NUMBER	207748	DRAWING No	CI-SK-0006	SHEET	1	AMD	B	SIZE	A1
----------------	--------	------------	------------	-------	---	-----	---	------	----

Cadref: K:\N8603 - North Sydney\DE - Design\Aecom\5 - CAD\05 3 Working\Drwg\Sks\CI-SK-0006.dwg Last modified: 17 Dec 10 - 14:07