

PROPOSED INDUSTRIAL DEVELOPMENT

431 (LOT 32) MASONITE ROAD

HEATHERBRAE

SANDVIK MINING AND CONSTRUCTION AUSTRALIA PTY LTD

PORT STEPHENS COUNCIL



PROJECT NUMBER 10096C

DWG No.	SHEET TITLE	REV
C00	COVER SHEET	
C01	CONCEPT DRAINAGE PLAN	5
C02	EROSION & SEDIMENTATION CONTROL PLAN	5

GEOFF CRAIG & ASSOCIATES PTY LTD

Consulting Engineers & Project Managers

A.B.N. 92 086 017 745

PHONE: (02) 4964 1811

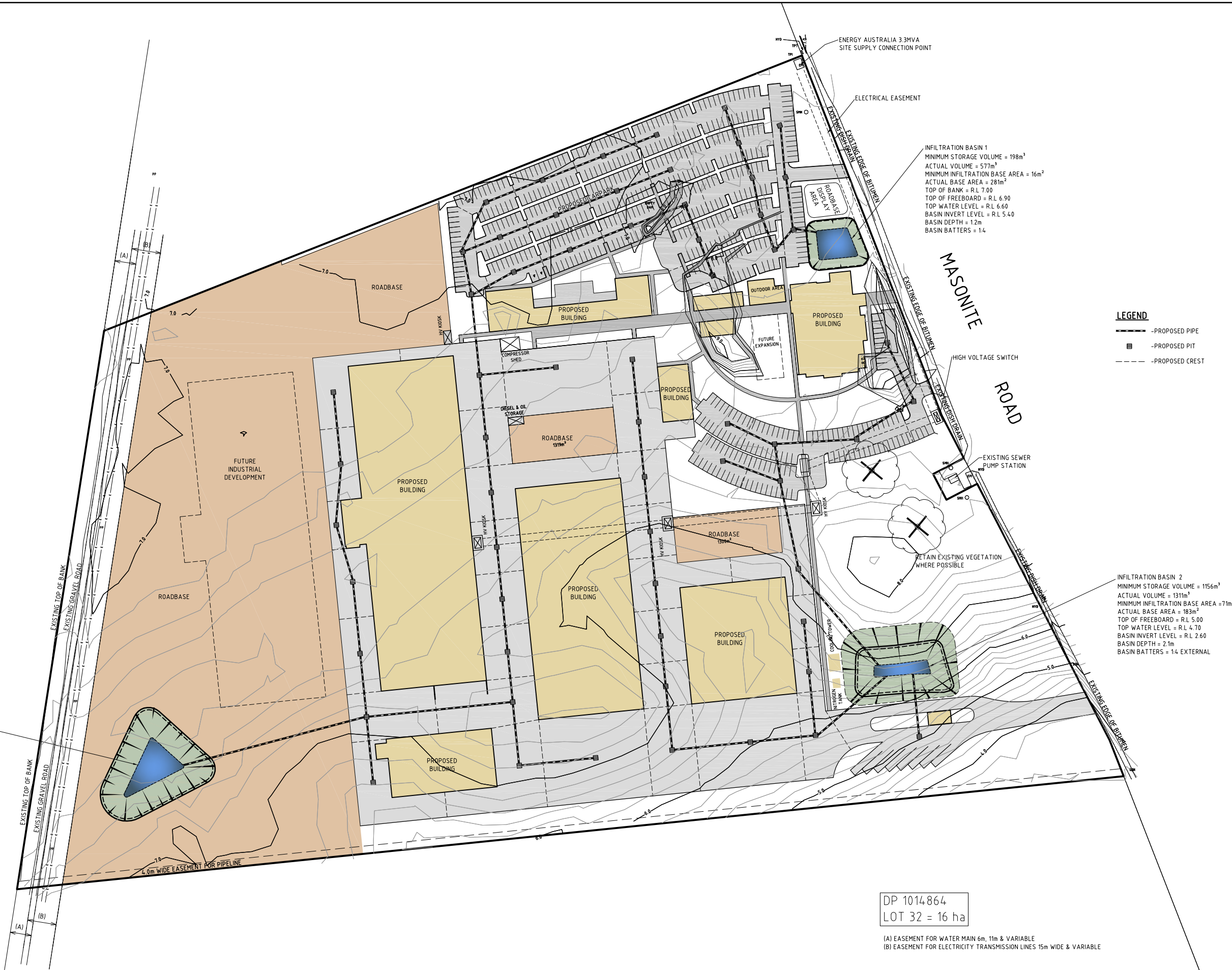
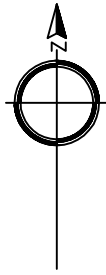
FAX: (02) 4964 1822

1 HARTLEY DRIVE

THORNTON 2322

PO BOX 3337

THORNTON 2322



LEGEND
 - PROPOSED PIPE
 - PROPOSED PIT
 - PROPOSED CREST

INFILTRATION BASIN 1
 MINIMUM STORAGE VOLUME = 198m³
 ACTUAL VOLUME = 577m³
 MINIMUM INFILTRATION BASE AREA = 16m²
 ACTUAL BASE AREA = 281m²
 TOP OF BANK = R.L 7.00
 TOP OF FREEBOARD = R.L 6.90
 TOP WATER LEVEL = R.L 6.60
 BASIN INVERT LEVEL = R.L 5.40
 BASIN DEPTH = 12m
 BASIN BATTERS = 1:4

INFILTRATION BASIN 2
 MINIMUM STORAGE VOLUME = 1156m³
 ACTUAL VOLUME = 1311m³
 MINIMUM INFILTRATION BASE AREA = 71m²
 ACTUAL BASE AREA = 183m²
 TOP OF FREEBOARD = R.L 5.00
 TOP WATER LEVEL = R.L 4.70
 BASIN INVERT LEVEL = R.L 2.60
 BASIN DEPTH = 2.1m
 BASIN BATTERS = 1:4 EXTERNAL

INFILTRATION BASIN 3
 MINIMUM STORAGE VOLUME = 3000m³
 ACTUAL VOLUME = 3271m³
 MINIMUM INFILTRATION BASE AREA = 157m²
 ACTUAL BASE AREA = 413.4m²
 TOP OF BANK/FREEBOARD = R.L 6.90
 TOP WATER LEVEL = R.L 6.60
 BASIN INVERT LEVEL = R.L 3.80
 BASIN DEPTH = 2.8m
 BASIN BATTERS = 1:4

DP 1014864
 LOT 32 = 16 ha

(A) EASEMENT FOR WATER MAIN 6m, 11m & VARIABLE
 (B) EASEMENT FOR ELECTRICITY TRANSMISSION LINES 15m WIDE & VARIABLE

Amendment	Description	Drawn	App'd	Date
5	SITE LAYOUT AMENDMENTS	A.M	A.J.F	18.06.10
4	SITE PLAN AMENDED	A.A	A.J.F	03.06.10
3	SITE PLAN CHANGED	A.A	A.J.F	26.05.10
2	INFILTRATION POND 2 MOVED & CARPARK AMENDMENTS	A.A	A.J.F	12.05.10
1	ORIGINAL ISSUE	A.A	A.J.F	05.05.10



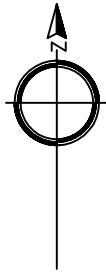
COPYRIGHT
 Copyright in the drawings, information and data recorded herein is the property of Geoff Craig & Associates Pty Ltd and may not be used, copied or reproduced in whole or part for any purpose other than that for which it is supplied without the prior consent of Geoff Craig & Associates Pty Ltd.

Designed
 A.A
 Scale
 1:1000 (A1 SHEET)
 1:2000 (A3 SHEET)
 Project Approval
 IAN HILL (B.E.)
 Consulting Civil Engineer

GEOFF CRAIG & ASSOCIATES PTY LTD
 Consulting Engineers & Project Managers
 A.B.N. 92 086 017 745
 PHONE: (02) 4964 1811
 FAX: (02) 4964 1822
 1 HARTLEY DRIVE
 THORNTON NSW 2322
 PO BOX 3337
 THORNTON NSW 2322

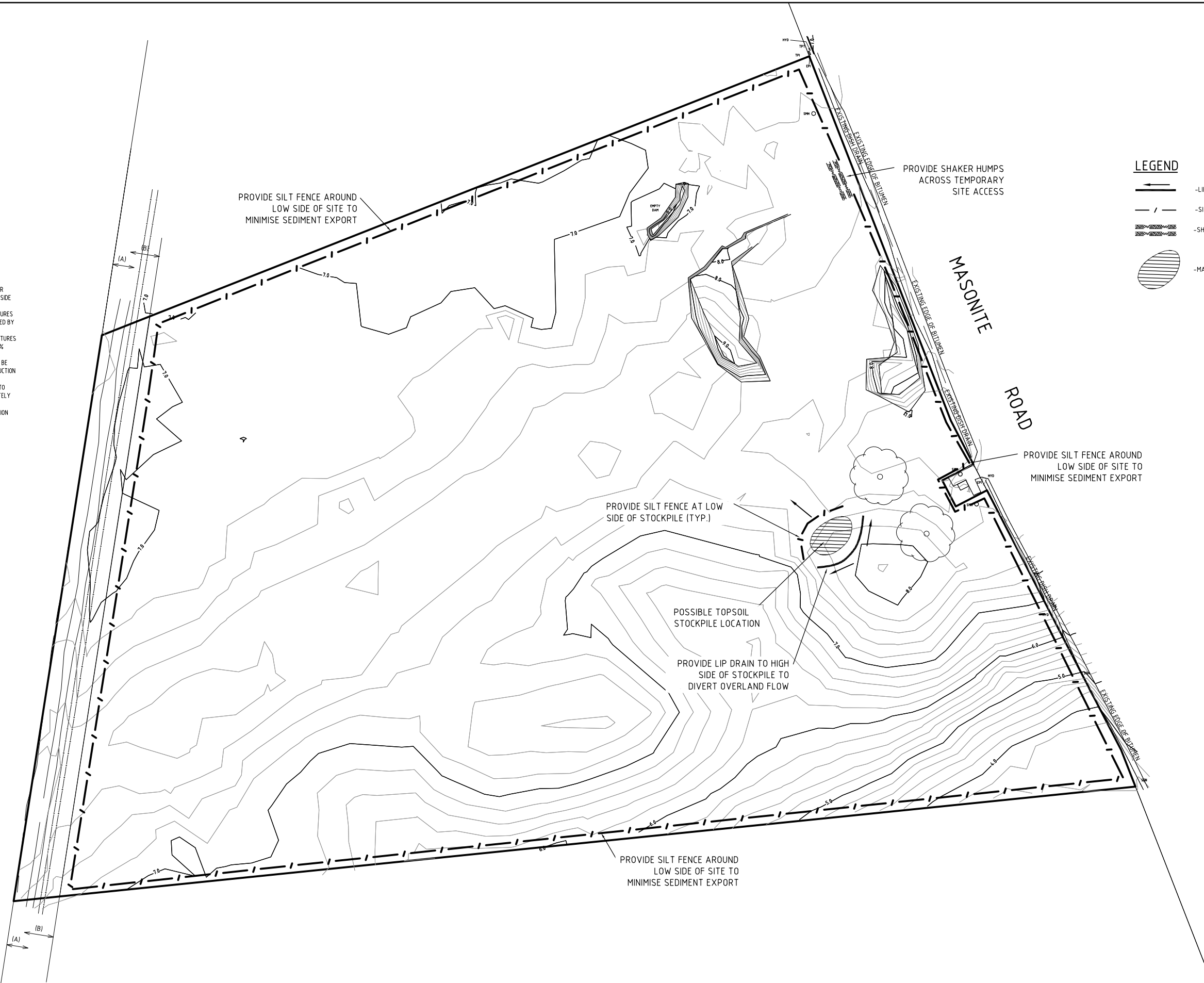
PROPOSED INDUSTRIAL DEVELOPMENT
431 (LOT 32) MASONITE ROAD, HEATHERBRAE
CONCEPT DRAINAGE PLAN
 SANDVIK MINING AND CONSTRUCTION AUSTRALIA PTY LTD
 PROJECT BY HUNTER LAND DEVELOPMENTS

Project No
10096C
 Drawing No
C01
 Revision
5



NOTES:

1. NO MANOEUVRING OF VEHICLES OR STOCKPILING OF MATERIALS OUTSIDE THE CONSTRUCTION SITE.
2. ALL SEDIMENT CONTROL STRUCTURES TO BE INSPECTED AND MAINTAINED BY SITE MANAGER DAILY.
3. ALL SEDIMENT RETAINING STRUCTURES TO BE CLEANED ON REACHING 50% STORAGE CAPACITY.
4. ALL EXISTING VEGETATION WILL BE RETAINED OUTSIDE THE CONSTRUCTION SITE.
5. DRAINAGE IS TO BE CONNECTED TO STORMWATER SYSTEM IMMEDIATELY ON COMPLETION OF WORKS.
6. CONSTRUCTION SITE STABILISATION TO COMMENCE IMMEDIATELY ON COMPLETION OF WORKS.



LEGEND

- LIP DRAIN
- SILT FENCE
- SHAKER HUMPS
- MATERIAL STOCK PILE

Amendment	Description	Drawn	App'd	Date
5	ORIGINAL ISSUE	P.K.	A.J.F.	17.06.10



COPYRIGHT
 Copyright in the drawings, information and data recorded hereon is the property of Geoff Craig & Associates Pty Ltd and may not be used, copied or reproduced in whole or part for any purpose other than that for which it is supplied without the prior consent of Geoff Craig & Associates Pty Ltd.

Designed
A.A.
 Scale
1:1000 (A1 SHEET)
1:2000 (A3 SHEET)
 Project Approval
IAN HILL (B.E.)
Consulting Civil Engineer

GEOFF CRAIG & ASSOCIATES PTY LTD
 Consulting Engineers & Project Managers
 A.B.N. 92 086 017 745
 PHONE: (02) 4964 1811
 FAX: (02) 4964 1822
 1 HARTLEY DRIVE
 THORNTON NSW 2322
 PO BOX 3337
 THORNTON NSW 2322

**PROPOSED INDUSTRIAL DEVELOPMENT
 431 (LOT 32) MASONITE ROAD, HEATHERBRAE
 EROSION & SEDIMENTATION CONTROL PLAN**
 SANDVIK MINING AND CONSTRUCTION AUSTRALIA PTY LTD
 PROJECT BY HUNTER LAND DEVELOPMENTS

Project No	10096C
Drawing No	C02
Revision	5