

BARBER AVENUE

KIOSK SUBSTATION 'I'
750 KVA

To be installed under separate contract.

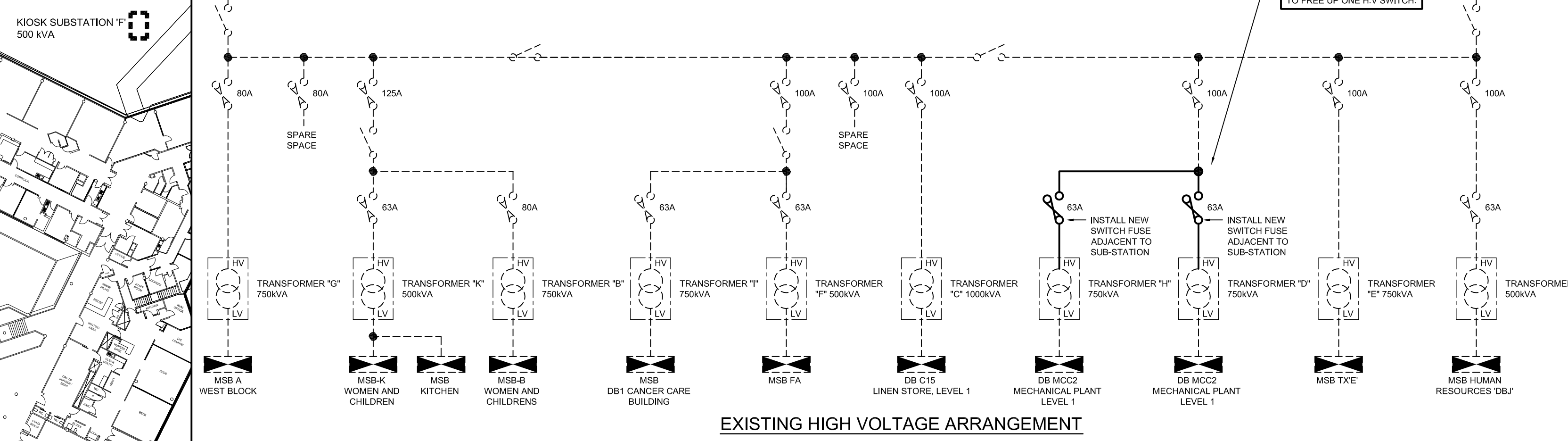
EXISTING 3C 240mm² PAPER-INSULATED AI INSTALLED BETWEEN THE PARKER STREET FRONTAGE AND THE HV SWITCH ROOM.

3. REPLACE EXISTING 5 MVA RATED CABLE WITH AN 8 MVA CABLE BETWEEN PARKER STREET AND THE HOSPITAL HV SWITCH ROOM.

4. REPLACE EXISTING 6 MVA RATED CABLE WITH AN 8 MVA CABLE BETWEEN PARKER STREET FRONTAGE AND THE KINGSWOOD ZONE SUB-STATION.

EXISTING INTEGRAL ENERGY 3C 240mm² XLPE CU CABLE INSTALLED IN CONDUIT FROM KINGSWOOD ZONE SUB-STATION.

PARKER STREET



2. PROPOSED FOR EAST BLOCK
2 x 750 KVA NEW KIOSK SUB-STATIONS

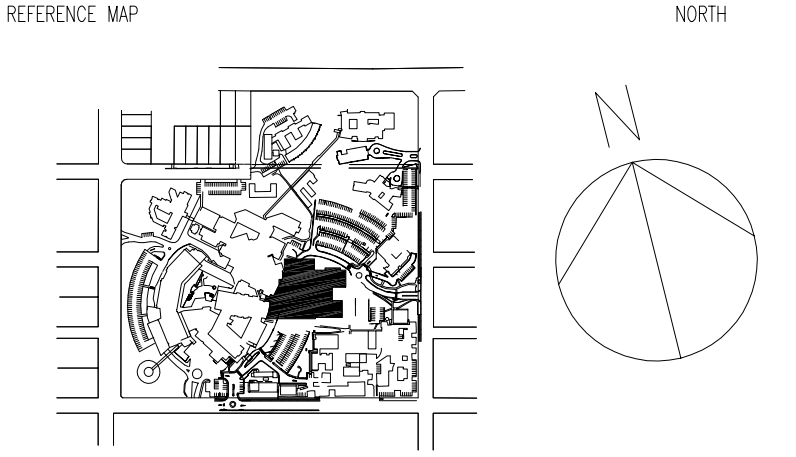
PREPARATION WORK FOR EAST BLOCK
NEW DIVERTED ROUTE FOR DERBY STREET INCOMING SUPPLY AND SUBSTATION 'I' HIGH VOLTAGE FEEDS BOTH 240mm² 3C XLPE AI CABLE WITHIN 1500 PVC HD CONDUIT.

Existing HV Kiosk Substation J to be upgraded and relocated. Alternative location indicated.

Proposed new Mental Health Unit Building Footprint

Existing HV feeder cable to be relocated clear of proposed Mental Health Building

DERBY STREET



DESIGNED UNDER A QUALITY SYSTEM CERTIFIED AS COMPLYING WITH ISO 9001 BY AN ACCREDITED CERTIFICATION BODY

PRELIMINARY ISSUE

01	PRELIMINARY ISSUE	20.05.10
REV	DESCRIPTION	DATE

NSW HEALTH
HEALTH INFRASTRUCTURE
NSW HEALTH
 SYDNEY WEST AREA HEALTH SERVICE | **NSW HEALTH**

PROJECT DIRECTOR PROCUREMENT
AURORA PROJECTS
 Level 5, 570 George Street, Sydney NSW 2000
 P: +61 (2) 9220 1828
 F: +61 (2) 9220 1828

STRUCTURE AND CIVIL
HUGHES TRUEMAN
 80 Pacific Highway, Sydney NSW 2005
 P: +61 (2) 9439 2633
 F: +61 (2) 9436 4305

BUILDING SERVICES / ESD ENGINEERS
STEENSEN VARMING
 160 Solihay Bay Rd, North Sydney NSW 1585
 P: +61 (2) 9987 2992
 F: +61 (2) 9987 2992

HYDRAULIC
GDK
 Suite 6, 170 Burwood Rd, Burwood NSW 1513
 P: +61 (2) 9745 0720
 F: +61 (2) 9745 0722

ARCHITECTS & HEALTH PLANNERS
HASSELL LIMITED ACN 007 711 435
 88 CUMBERLAND STREET SYDNEY
 NSW 2000 AUSTRALIA
 SYDNEY@HASSELL.COM.AU
 T 61 2 9101 2000 F 61 2 9101 2100

PROJECT
NEPEAN HOSPITAL
PENRITH HEALTH CAMPUS
REDEVELOPMENT
 STAGE 3 PROCUREMENT - East Block

DRAWING TITLE
ELECTRICAL SERVICES
SITE PLAN
HIGH VOLTAGE ARRANGEMENT - UPGRADE PROPOSAL

STATUS
FOR CONSTRUCTION

SCALE AT B1	DRAWN	CO-ORDINATED	CHECKED	APPROVED
1:250	IR	GL	RC	RT
JOB NO.	DRAWING NUMBER	REV		
09748	EB-E1008	01		

HASSELL