

KILLEATON STREET

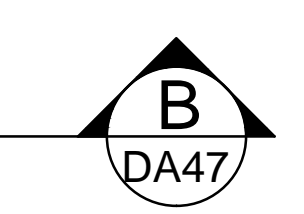
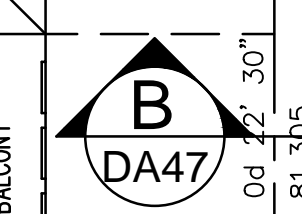
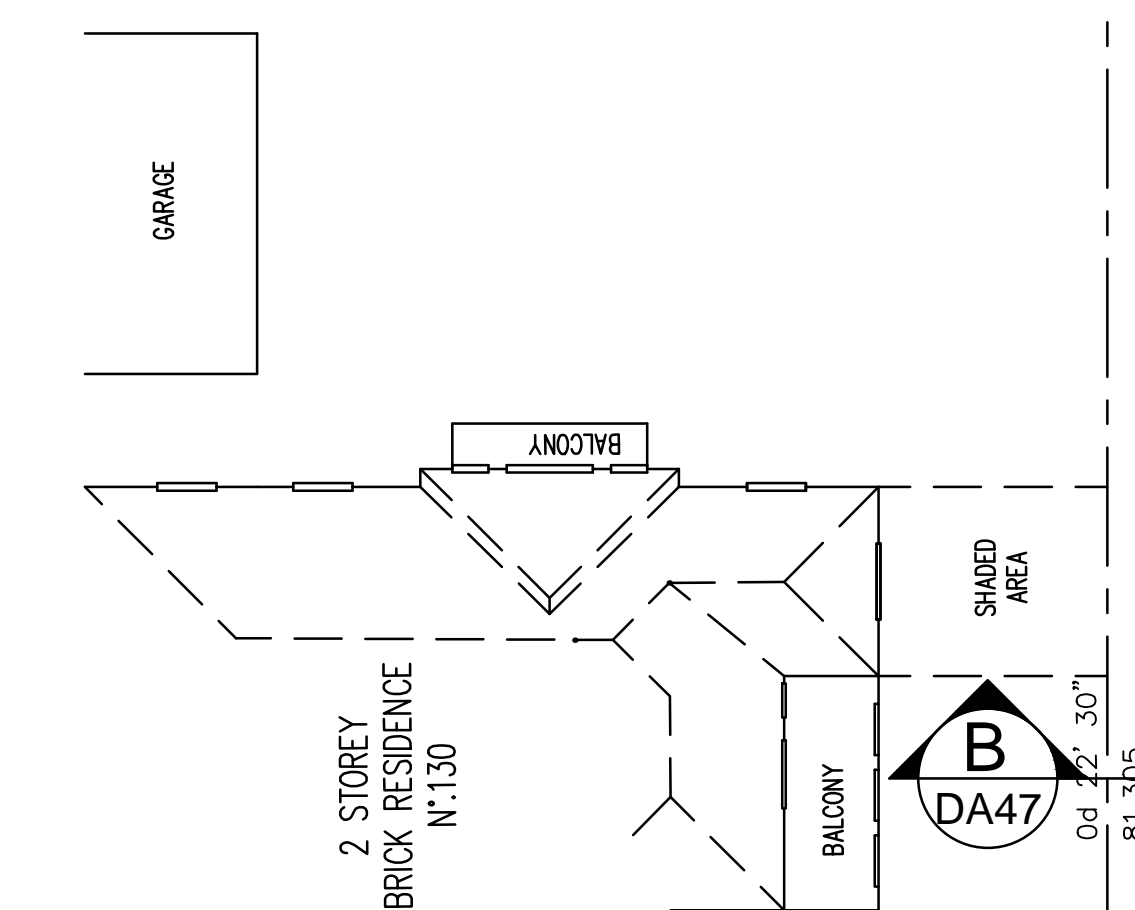
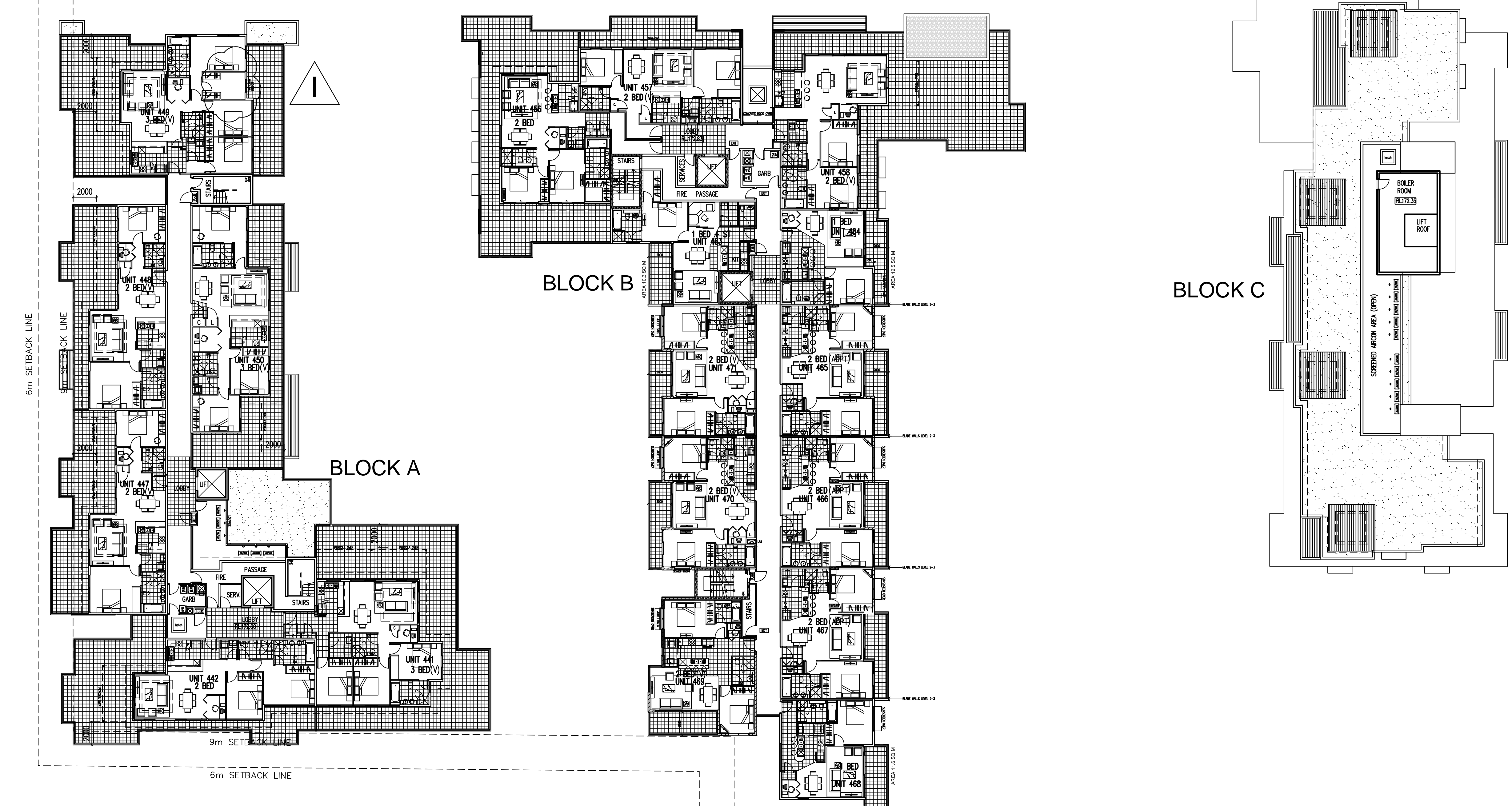


89d 10' 50" 59.915

89d 56' 30" 85.62

10m SETBACK LINE

12m SETBACK LINE



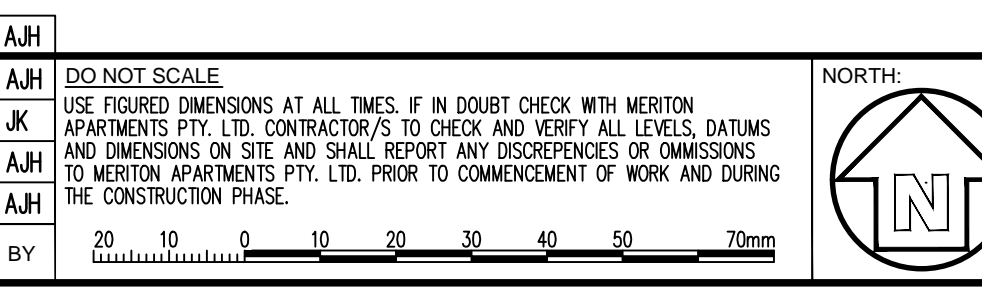
270d 52' 30" 34.6

270d 52' 30" 91.44

159.00

STAGE-2 LEVEL 4 PLAN
SCALE 1:200

ISSUE	DATE	REVISION	BY	ISSUE	DATE	REVISION	BY
D	12.09.11	DRAWINGS REVISED FOR SUBMISSION	JW	H	17.07.12	NEW WINDOW ADDED TO BLOCK A UNIT 449 AT CLIENTS REQUEST.	AJH
C	01.07.11	DRAWINGS REVISED FOR PAC COMMENTS	JW	G	27.04.12	PERGOLAS REDUCED IN SIZE AT COUNCIL REQUEST.	AJH
B	03.12.10	DRAWINGS REVISED FOR D.O.P. REQUIREMENTS	AJH	F	27.03.12	PERGOLAS ADDED ON COURTYARDS	AJH
A	09.07.10	ISSUE FOR DEVELOPMENT APPLICATION	AJH	E	23.12.11	ROOF SKYLIGHTS REINSTATED AT COUNCIL REQUEST	AJH
					15.11.11	BLOCK B RLS AMENDED	AJH



GENERAL NOTES:
 THIS DRAWING IS THE EXCLUSIVE PROPERTY OF MERITON APARTMENTS PTY. LTD. AND THE REPRODUCTION OF ANY PART WITHOUT THE PRIOR WRITTEN CONSENT OF MERITON APARTMENTS PTY. LTD. IS A VIOLATION OF APPLICABLE LAWS. IN NO EVENT SHALL MERITON APARTMENTS PTY. LTD. BE HELD LIABLE FOR SPECIAL, COLLATERAL, INCIDENTAL OR CONSEQUENTIAL LIABILITY IN CONNECTION WITH THE USE OF THIS DIGITAL DATA ONCE RELEASED FROM THE MERITON APARTMENTS PTY. LTD. OFFICE.
 THIS DRAWING IS TO BE READ AND UNDERSTOOD IN CONJUNCTION WITH THE STRUCTURAL, MECHANICAL, ELECTRICAL AND / OR ANY OTHER CONSULTANTS DOCUMENTATION AS MAY BE APPLICABLE TO THE PROJECT PRIOR TO THE START OF ANY WORKS AND FOR ITS DURATION.

Meriton
 Apartments Pty. Ltd.
 Builders & Developers

Level 11, 528 Kent Street, Sydney NSW 2000
 Tel: (02) 9297 2888 Fax: (02) 9297 2777 Email: info@meriton.com.au
 Website: http://www.meriton.com.au

PROJECT:
 PROPOSED RESIDENTIAL DEVELOPMENT
 KILLEATON
 132-138 KILLEATON STREET
 STIVES, NSW 2075

PROJECT No. 749 & 750	DATE: 7/17/2012	DRAWING No. DA-31	REV. I
DRAWN BY: AH	SCALE: AS SHOWN		
CAD FILE: S:\31-138-KILLEATON\ARCH\DA-CURRENT\DA-31 STAGE-2 LEVEL 4 PLAN.DWG			