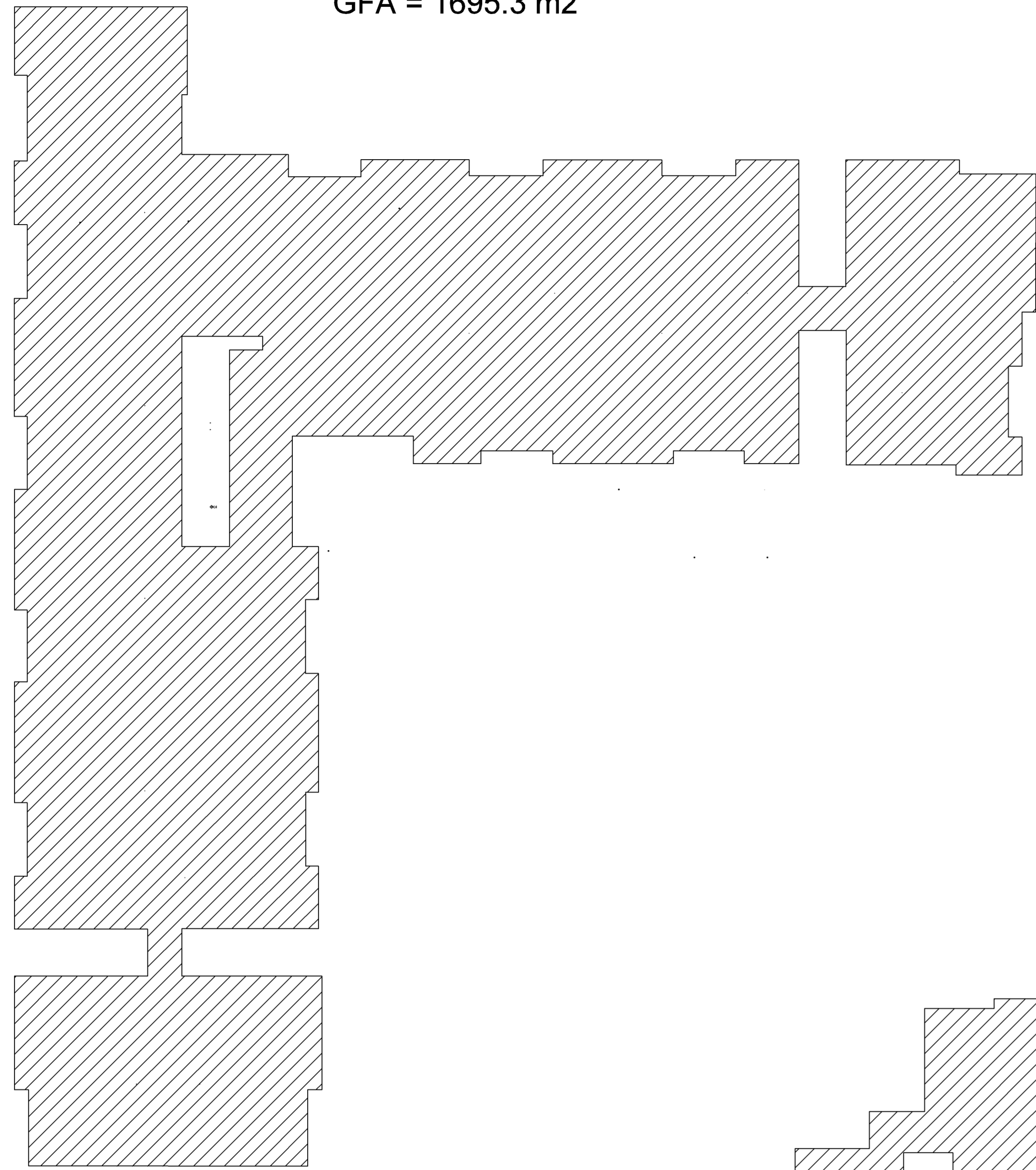
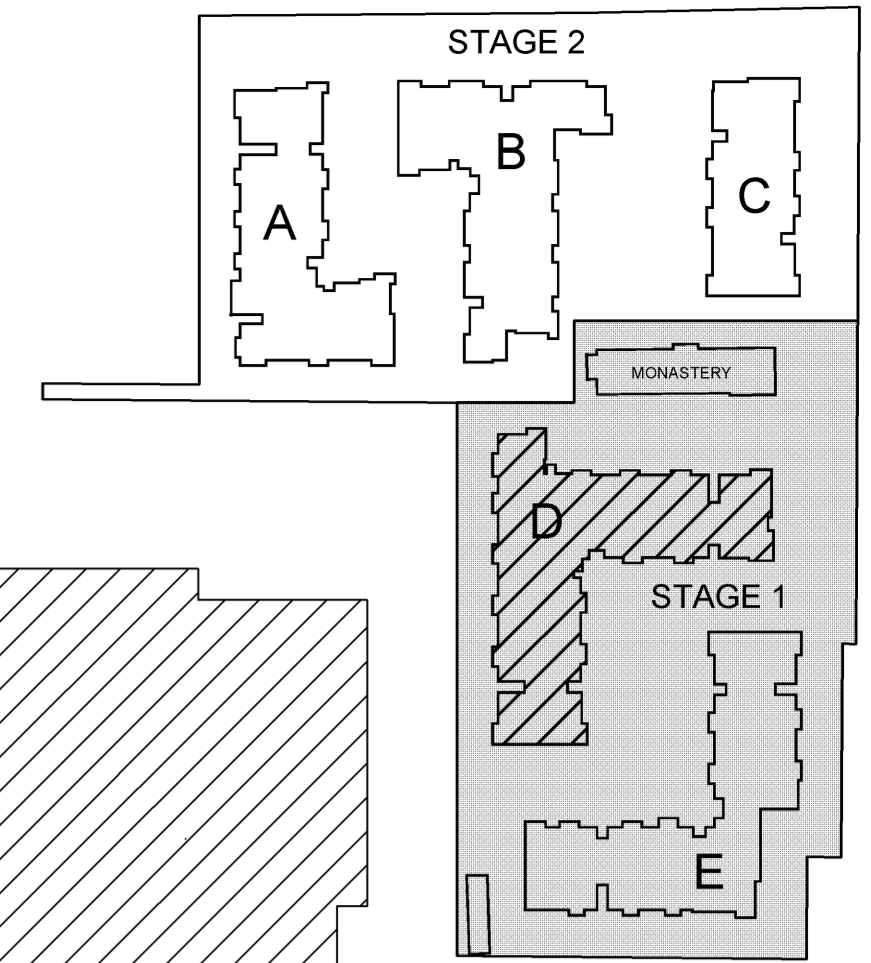
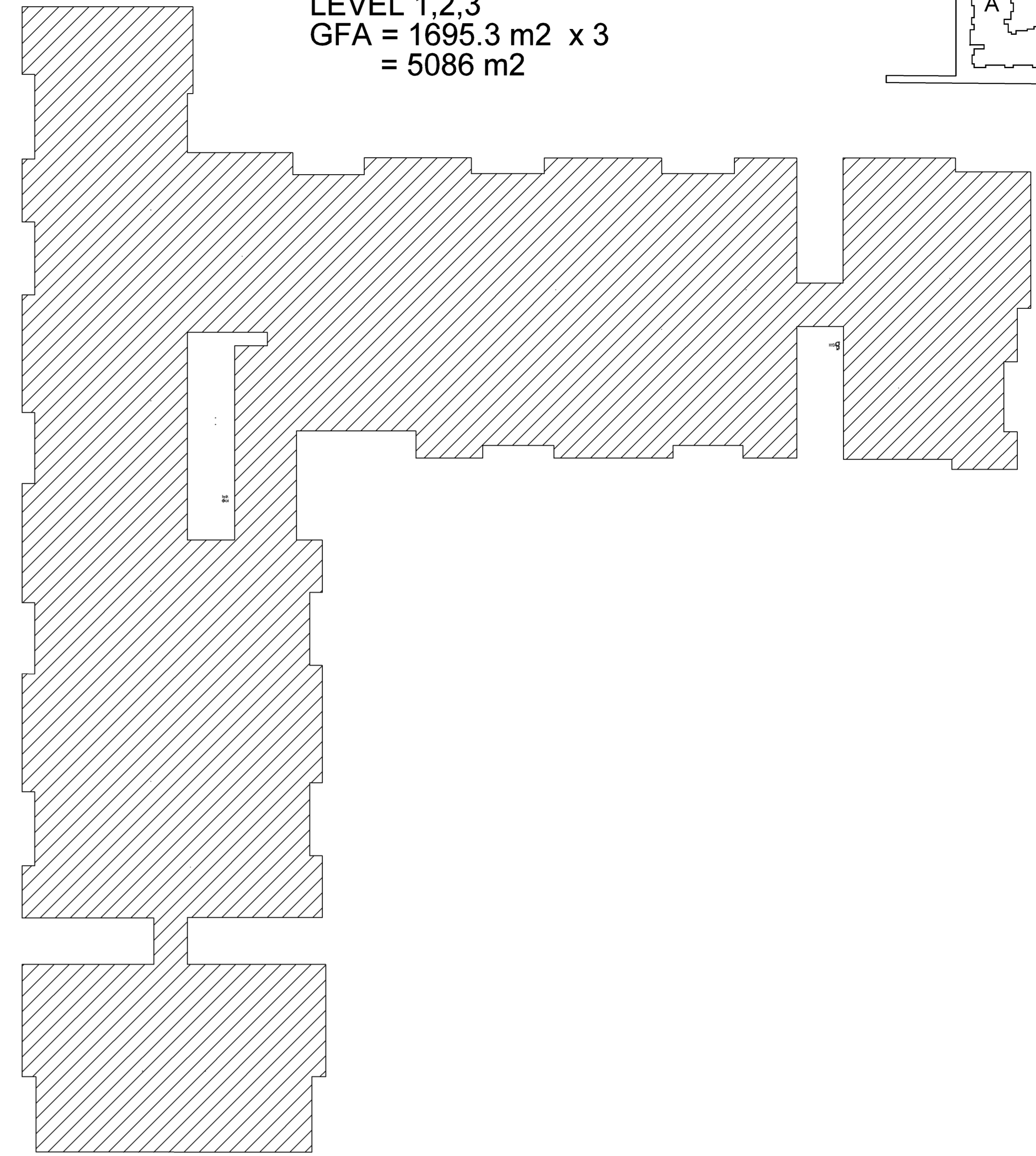


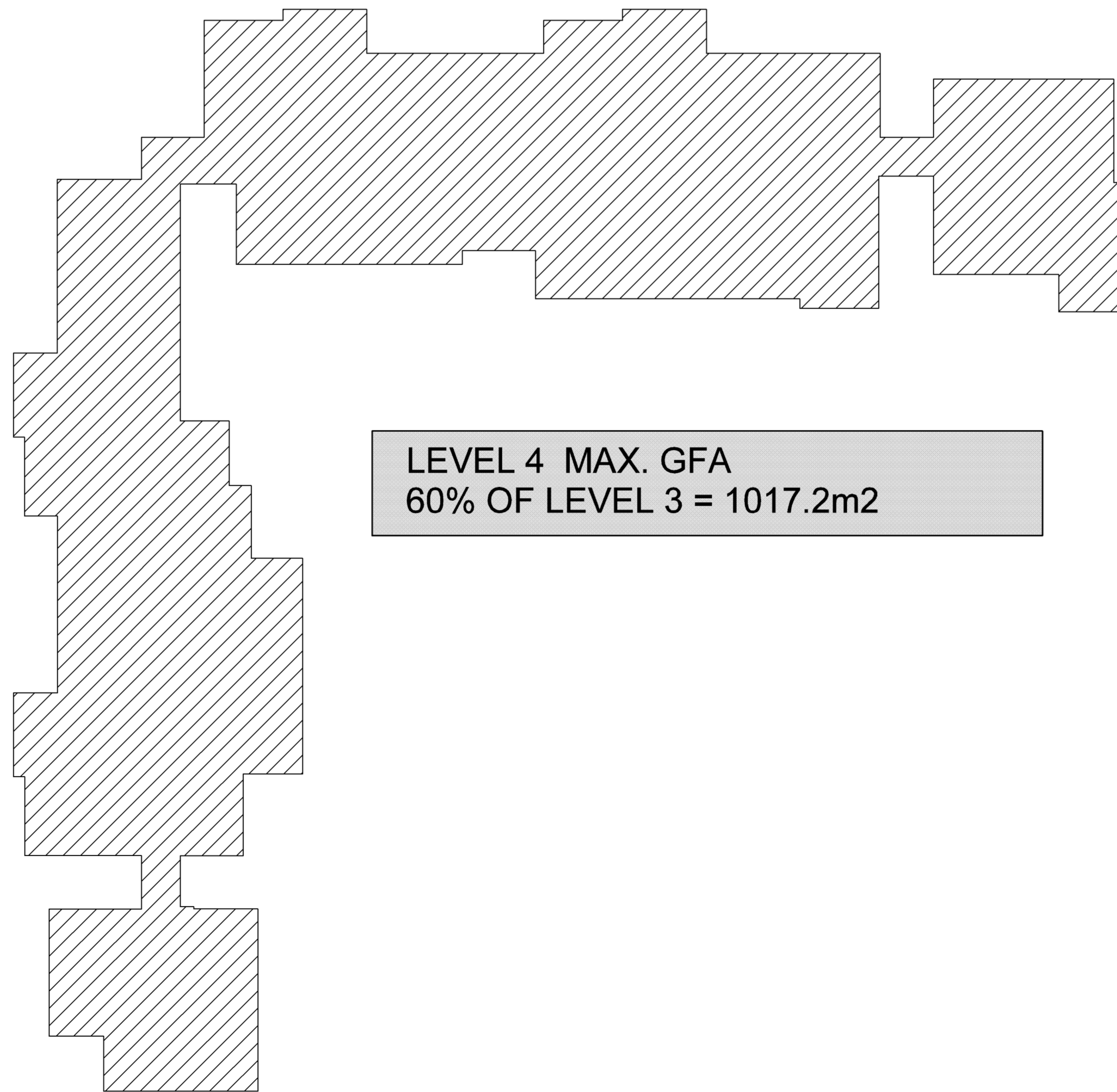
BLOCK D
GROUND FLOOR
GFA = 1695.3 m2



BLOCK D
LEVEL 1,2,3
GFA = 1695.3 m2 x 3
= 5086 m2



BLOCK D
LEVEL 4
GFA = 1017.0 m2



LEVEL 4 MAX. GFA
60% OF LEVEL 3 = 1017.2m2

- GROSS FLOOR AREA CALCULATIONS
MEASURED AT INSIDE FACE OF EXTERNAL WALL.
- DEDUCTIONS
- FIRE STAIRS
 - LIFTS
 - GARBAGE ROOMS
 - SERVICES CUPDS AND ROOMS
 - OPEN BALCONIES

BLOCK D GFA TOTAL = 7798.3 m2

GFA BLOCK D
SCALE 1:200

ISSUE	DATE	REVISION	BY	ISSUE	DATE	REVISION	BY
A	09.07.10	ISSUE FOR DEVELOPMENT APPLICATION	AJH				

DO NOT SCALE.
USE FIGURED DIMENSIONS AT ALL TIMES. IF IN DOUBT CHECK WITH MERITON APARTMENTS PTY. LTD. CONTRACTORS TO CHECK AND VERIFY ALL LEVELS, DATINGS AND DIMENSIONS ON SITE AND SHALL REPORT ANY DISCREPANCIES OR OMISSIONS TO MERITON APARTMENTS PTY. LTD. PRIOR TO COMMENCEMENT OF WORK AND DURING THE CONSTRUCTION PHASE.



GENERAL NOTES:
THIS DRAWING IS THE EXCLUSIVE PROPERTY OF MERITON APARTMENTS PTY. LTD. AND THE REPRODUCTION OF ANY PART WITHOUT THE PRIOR WRITTEN CONSENT OF MERITON APARTMENTS PTY. LTD. IS A VIOLATION OF APPLICABLE LAWS. IN NO EVENT SHALL MERITON APARTMENTS PTY. LTD. BE HELD LIABLE FOR SPECIAL, COLLATERAL, INCIDENTAL OR CONSEQUENTIAL LIABILITY IN CONNECTION WITH THE USE OF THIS DIGITAL DATA ONCE RELEASED FROM THE MERITON APARTMENTS PTY. LTD. OFFICES.
THIS DRAWING IS TO BE READ AND UNDERSTOOD IN CONJUNCTION WITH THE STRUCTURAL, MECHANICAL, ELECTRICAL AND / OR ANY OTHER CONSULTANTS DOCUMENTATION AS MAY BE APPLICABLE TO THE PROJECT PRIOR TO THE START OF ANY WORKS AND FOR ITS DURATION.

Meriton
Apartments Pty. Ltd.
Builders & Developers

Level 11, 328 Kent Street, Sydney NSW 2000 Email: info@meriton.com.au
Tel: (02) 9287 2888 Fax: (02) 9287 2777 Internet: http://www.meriton.com.au

PROJECT:
PROPOSED RESIDENTIAL DEVELOPMENT
132-138 KILLEATON STREET
ST.IVES, NSW XX

DRAWING TITLE:
GFA BLOCK D

PROJECT No.	DATE	DRAWING No.	REV.
749 & 750	8/13/2010	DA-63	A
DRAWN BY: AJH	SCALE: AS SHOWN		

CAD FILE:
s:\131-138-Killeaton\ARCH\DA-63 GFA BLOCK D.dwg