

NSW GOVERNMENT
Planning

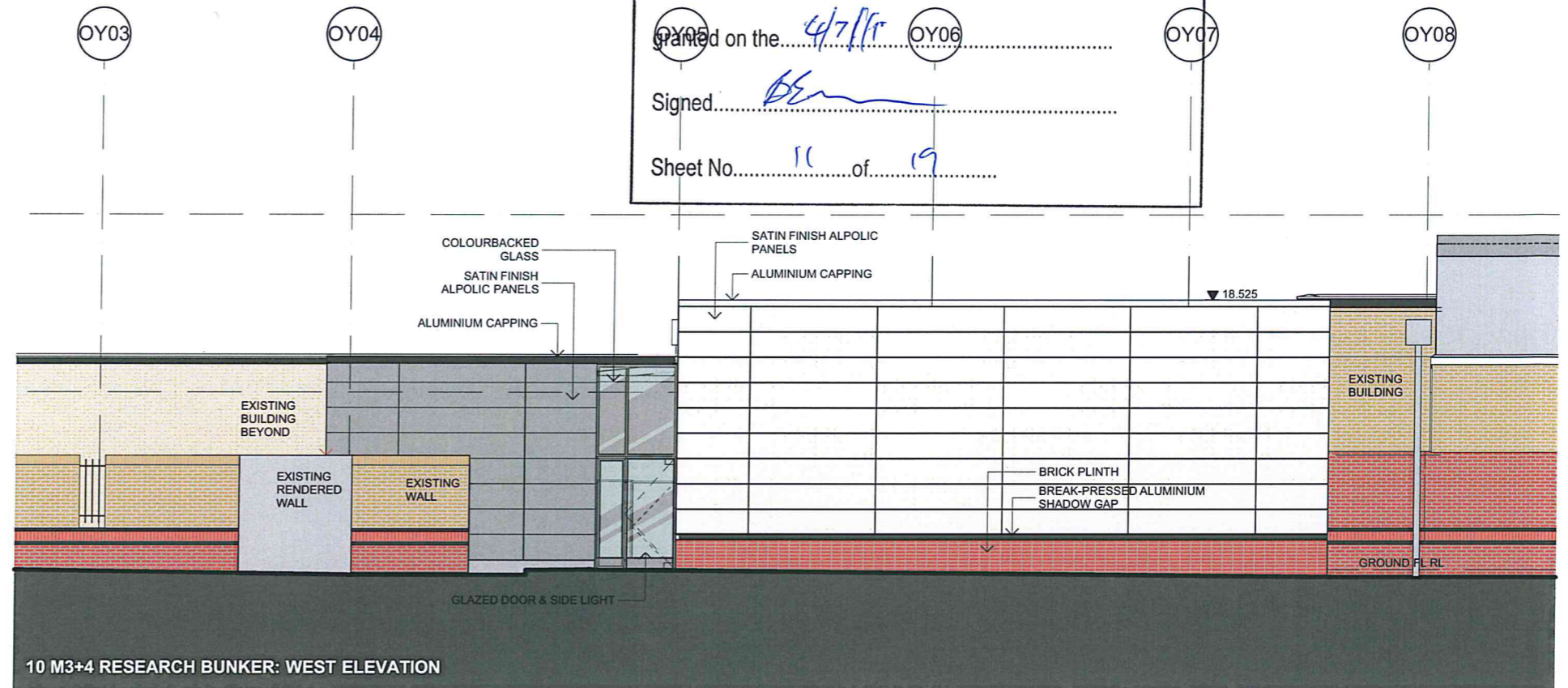
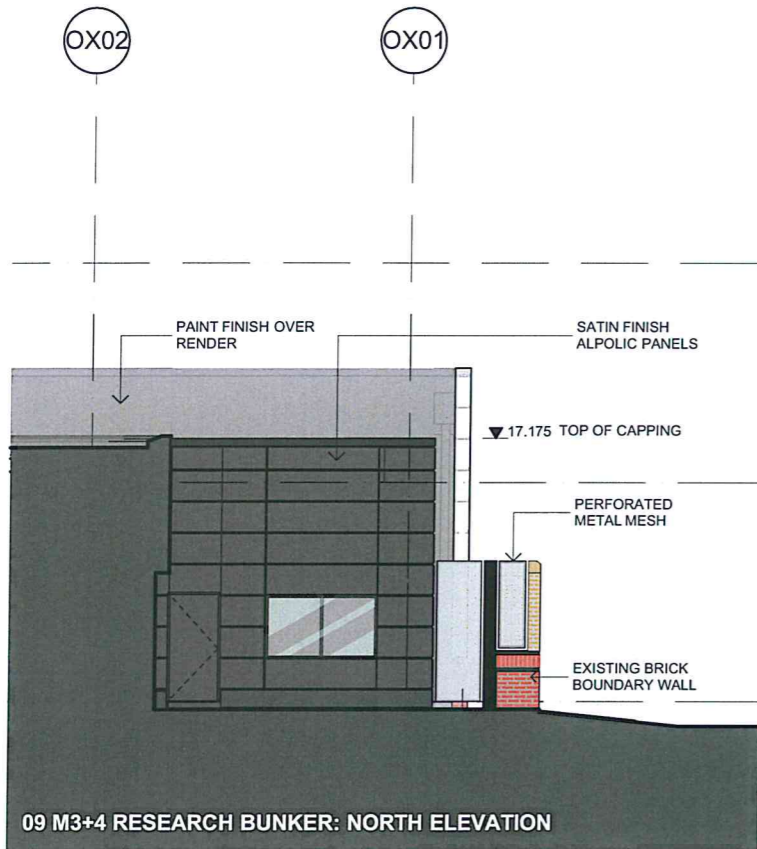
Issued under the Environmental Planning and Assessment Act 1979

Approved Application No. RP12-0056

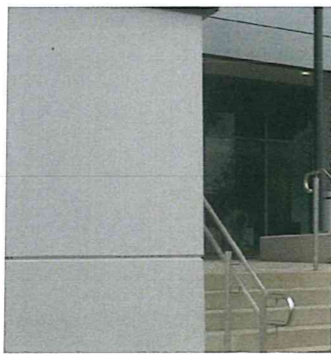
Granted on the 4/7/11

Signed [Signature]

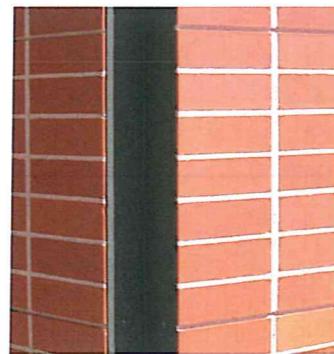
Sheet No. 11 of 19



PERFORATED METAL MESH



PAINT FINISH RENDER



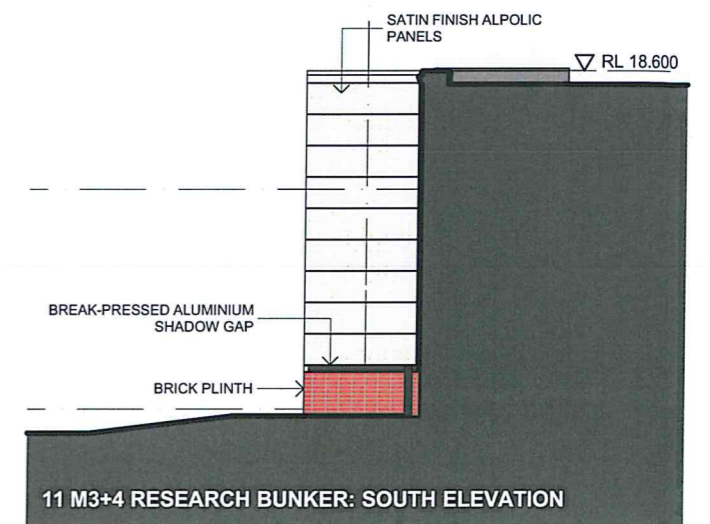
BRICKWORK



SATIN FINISH ALPOLIC



GLAZED DOORS



CX2

EX3

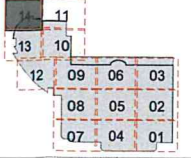
EX4

EX5


9 000 9 000 9 000 9 000



NOT TO SCALE
THIS DOCUMENT IS THE PROPERTY OF RICE DAUBNEY ARCHITECTS
ALL INFORMATION CONTAINED HEREIN IS UNCLASSIFIED
IN THE EVENT OF DISASTERS FROM THE PROJECT OR TO COMMENCEMENT OF THE
PROJECT SHALL BE DESTROYED FOR THE EXISTENCE ONLY



KEY PLAN

 **NSW GOVERNMENT**
Planning

Issued under the Environmental Planning and Assessment Act 1979

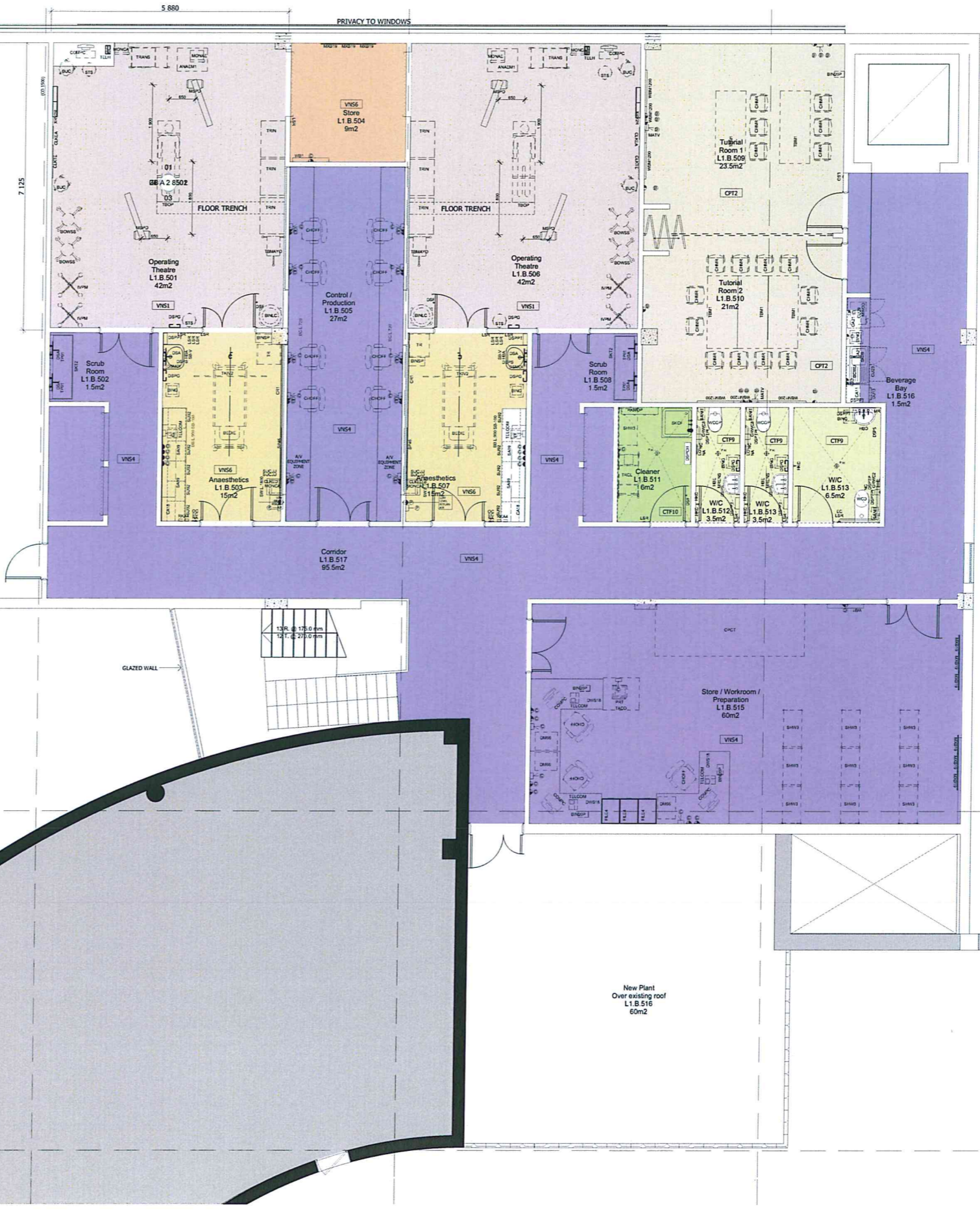
Approved Application No. MP10-0052

Expansion Zone
L1 B.500
191m²

granted on the 4/7/11

Signed B. G...

Sheet No. 12 of 19



Floor Finishes

- Concourse Flooring CTF3
- Marble/Granite
- Tiles CTF7
- Tiles CTF9 - Public
- Tiles CTF10 - Staff
- Caspet CTF1
- Caspet CTF2
- Caspet CTF3
- Caspet CTF3 & CTF3 (in-hed pattern)
- Vinyl VNS1
- Vinyl VNS2
- Vinyl VNS3
- Non-slip Vinyl VNS4
- Acoustic Flooring VNS5
- Vinyl VNS6
- Vinyl (iron base) VNS7
- Non-slip Vinyl VNS11
- Vinyl VNS12
- Carbondium Duff
- Sealed Concrete
- Sealed Concrete - Epoxy non-slip coating
- No Floor Finish

NOTE:
PLANS ARE
INDICATIVE ONLY
AND SUBJECT TO
CHANGE

NO.	DATE	DESCRIPTION OF REVISION	REV'D BY	CHECKED BY
06	28/10/2010	PRELIMINARY ISSUE	MDS/IC4	EC
07	01/11/2010	PRELIMINARY ISSUE	MDS/IC4	EC
08	01/11/2010	PRELIMINARY ISSUE	MDS/IC4	EC
09	01/11/2010	PRELIMINARY ISSUE	MDS/IC4	EC
10	01/11/2010	PRELIMINARY ISSUE	MDS/IC4	EC
11	01/11/2010	PRELIMINARY ISSUE	MDS/IC4	EC
12	01/11/2010	PRELIMINARY ISSUE	MDS/IC4	EC

MANAGING CONTRACTOR

Bovis Lend Lease

LEVEL 8, 30 THE SQUARE
SULLYVILLE NSW 2170

PH: 02 9266 8111
F: 02 9266 8132
www.bovislendlease.com

ARCHITECTS

RICE DAUBNEY
ARCHITECTS CONSULTANTS
IMPLEMENTING ARCHITECTURE

110 WALKER STREET (NORTH) SYDNEY NSW 2000
T: 02 9266 2000 F: 02 9266 2015
RICE DAUBNEY ARCHITECTS PTY LTD
RICE DAUBNEY ARCHITECTS PTY LTD
RICE DAUBNEY ARCHITECTS PTY LTD

PROJECT:
**LIVERPOOL HOSPITAL REDEVELOPMENT
STAGE 2.1
ELIZABETH STREET
LIVERPOOL, NSW, 2170**

DRAWING TITLE:
**MILESTONE 3/4 - ZONE C
FIT OUT PLANS
FF&E PLAN LEVEL 1**

SCALE: DATE: CHECKED BY:
1:50 @ B1 SEE ABOVE SEE ABOVE

PROJECT NUMBER: DRAWING NUMBER: ISSUE:
08501 ZC A 1 3014 06

CY17

CY16

8,400



NOT TO SCALE
THIS DOCUMENT IS THE PROPERTY OF RICE DAUBNEY ARCHITECTS
ALL INFORMATION CONTAINED HEREIN IS UNCLASSIFIED
IN THE EVENT OF DISASTERS FROM THE PROJECT OR TO COMMENCEMENT OF THE
PROJECT SHALL BE DESTROYED FOR THE EXISTENCE ONLY

CX2

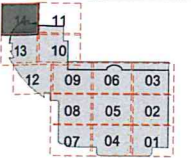
EX3

EX4

EX5



PROJECT NORTH
THIS DOCUMENT IS THE PROPERTY OF RICE DAUBNEY ARCHITECTS PTY LTD.
ALL INFORMATION CONTAINED HEREIN IS FOR THE EXCLUSIVE USE OF THE CLIENT.
IT IS NOT TO BE REPRODUCED OR TRANSMITTED IN ANY FORM OR BY ANY MEANS, ELECTRONIC OR MECHANICAL, INCLUDING PHOTOCOPYING, RECORDING, OR BY ANY INFORMATION STORAGE AND RETRIEVAL SYSTEM, WITHOUT THE WRITTEN PERMISSION OF RICE DAUBNEY ARCHITECTS PTY LTD.

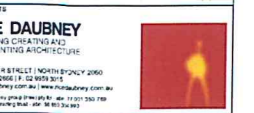


KEY PLAN

Concourse Flooring CTF3
Marble/Gaia
Tiles CTF7
Tiles CTF9 - Public
Tiles CTF10 - Staff
Carpet CPT1
Carpet CPT2
Carpet CPT3
Carpet CPT2 & CPT3 (mixed pattern)
Vinyl VNS1
Vinyl VNS2
Vinyl VNS3
Non-slip Vinyl VNS4
Acoustic Flooring VNS5
Vinyl VNS6
Vinyl (non porous) VNS7
Non-slip Vinyl VNS11
Vinyl VNS12
Coronavirus Duct
Sealed Concrete
Sealed Concrete - Epoxy non-slip coating
No Floor Finish

NOTE:
PLANS ARE
INDICATIVE ONLY
AND SUBJECT TO
CHANGE

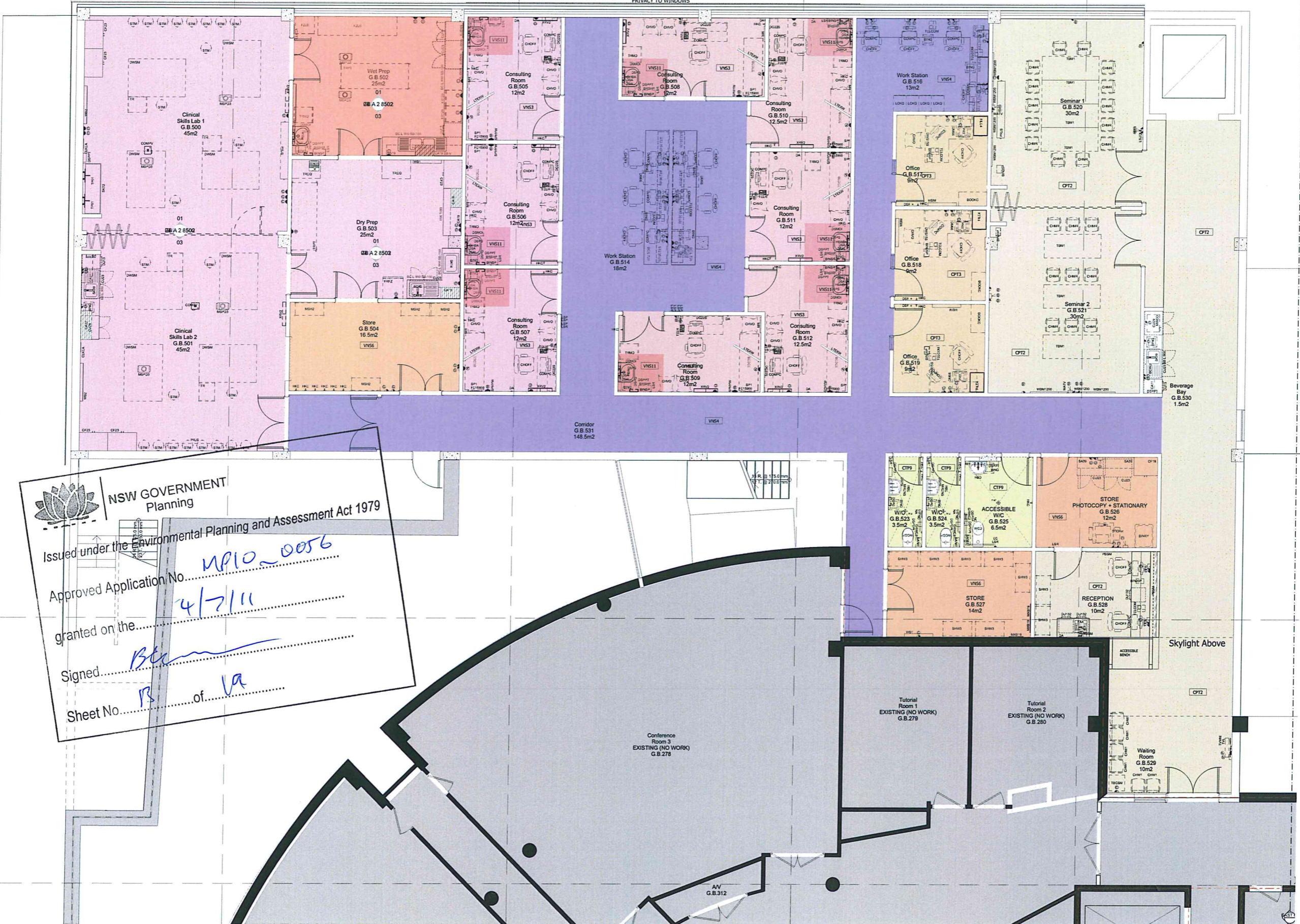
06/28/2020	PRELIMINARY ISSUE	WSD/CH/EC
08/11/2020	PRELIMINARY ISSUE	WSD/CH/EC
08/11/2020	PRELIMINARY ISSUE	WSD/CH/EC
08/12/2020	PRELIMINARY ISSUE	WSD/CH/EC
07/07/2020	PRELIMINARY ISSUE	WSD/CH/EC



PROJECT:
LIVERPOOL HOSPITAL REDEVELOPMENT
STAGE 2.1
ELIZABETH STREET
LIVERPOOL, NSW, 2170

DRAWING TITLE:
MILESTONE 3/4 - ZONE C
FIT OUT PLANS
FF&E PLAN GROUND

SHEET	DWG	OFFICED
150 @ B1	SEE ABOVE	SEE ABOVE
PROJECT NUMBER	DRAWING NUMBER	ISSUE
08501	ZC A G 3014	06



NSW GOVERNMENT Planning
 Issued under the Environmental Planning and Assessment Act 1979
 Approved Application No. MP10-0056
 granted on the 4/7/11
 Signed [Signature]
 Sheet No. 13 of 19

CY17

CY16



NSW GOVERNMENT
Planning

Issued under the Environmental Planning and Assessment Act 1979

Approved Application No. *MP10-0052*

granted on the *4/7/14*

Signed *[Signature]*

Sheet No. *15* of *19*



PROJECT NORTH

ZONE C



KIP PLAN

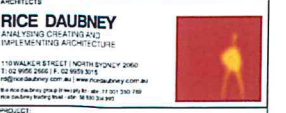
NOTE:
PLANS ARE
INDICATIVE ONLY
AND SUBJECT TO
CHANGE

00 11.10.10 PRELIMINARY ISSUE KH

NO.	DATE	DESCRIPTION OF REVISION	REVISED BY	CHECKED BY



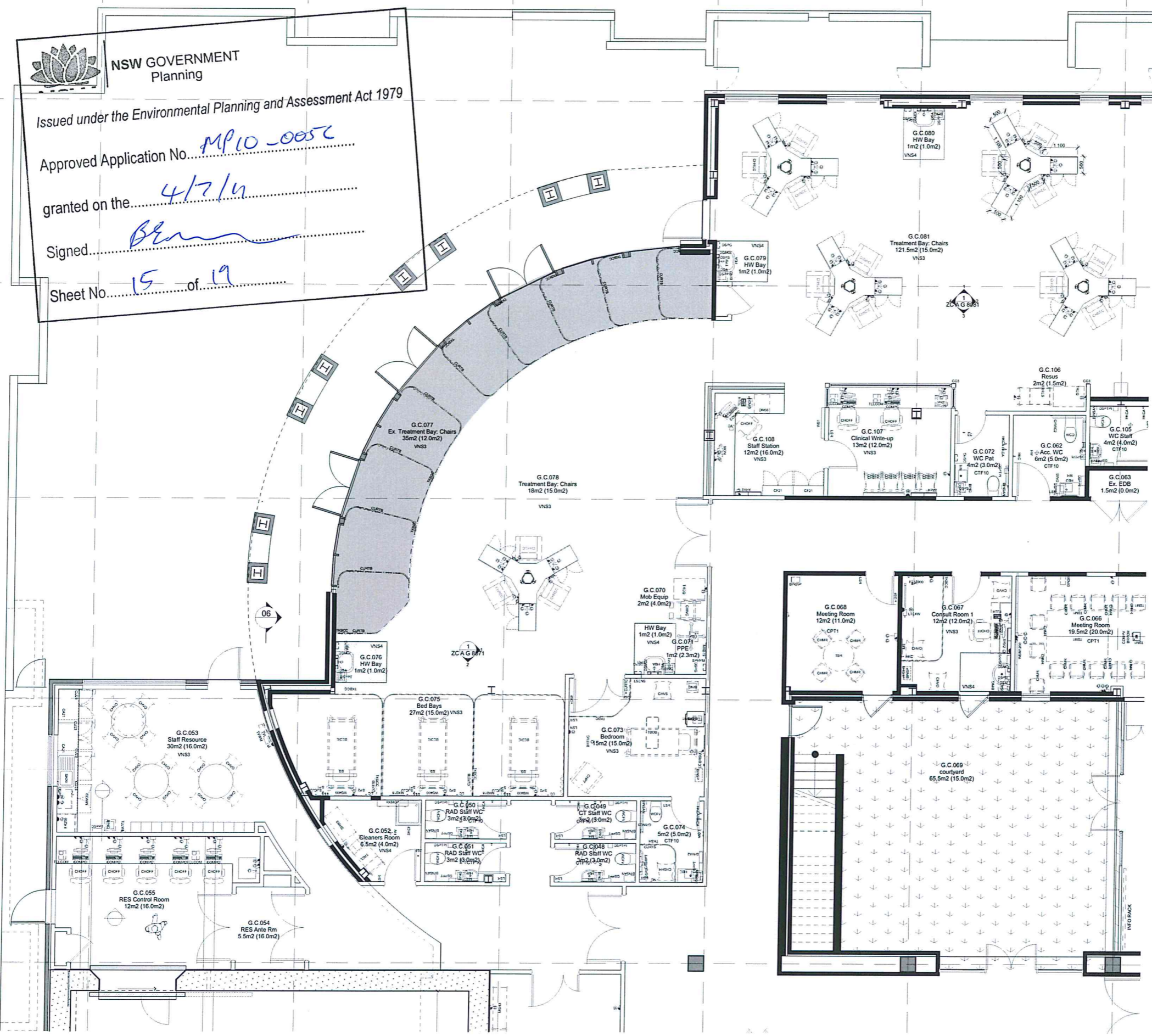
LEVEL 2.1 REDEVELOPMENT
LIVERPOOL, NSW 2170

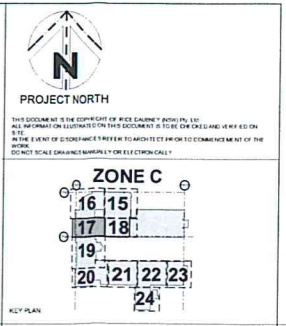
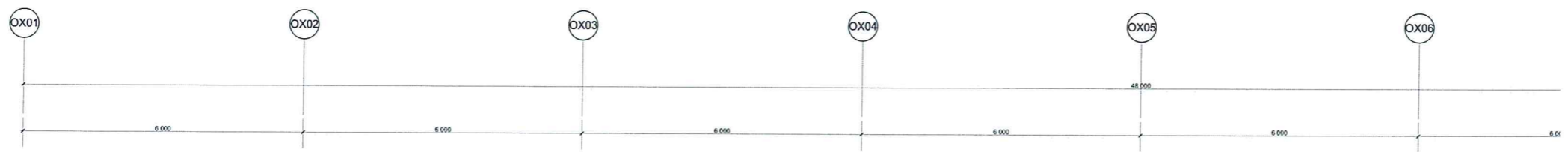


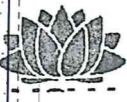
PROJECT:
LIVERPOOL HOSPITAL REDEVELOPMENT
STAGE 2.1
ELIZABETH STREET
LIVERPOOL, NSW, 2170

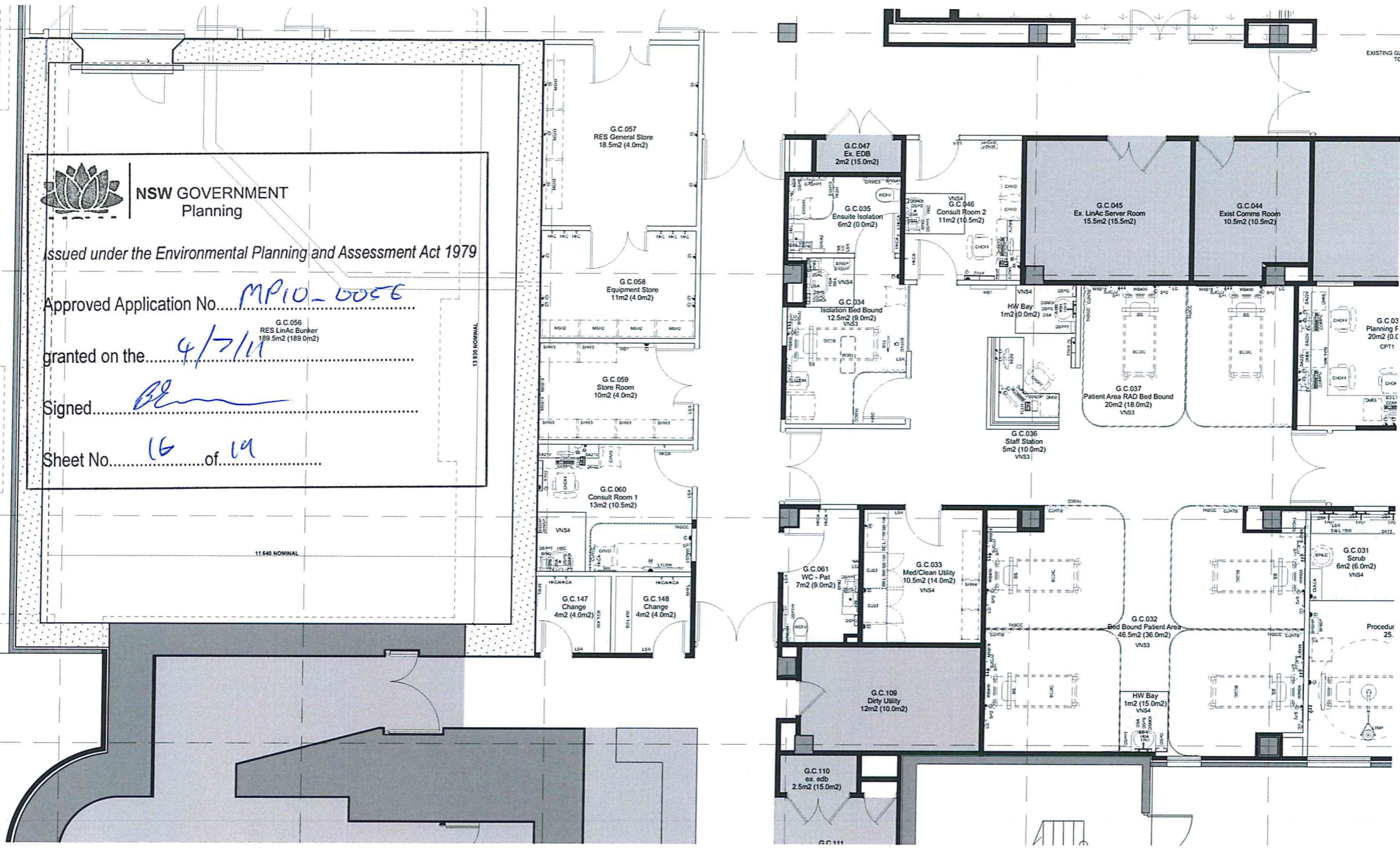
DRAWING TITLE:
MILESTONE 3-4 ZONE C
FF&E DRAWINGS
GROUND - AREA 16

SCALE	DATE	DRAWN BY
1:50@B1	09.09.2010	KH
PROJECT NUMBER	DRAWING NUMBER	ISSUE
08501	ZC A G 3016	00






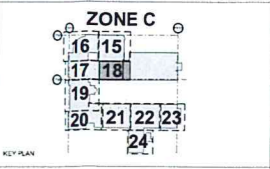
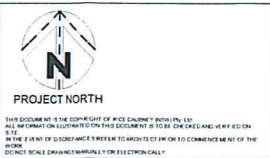
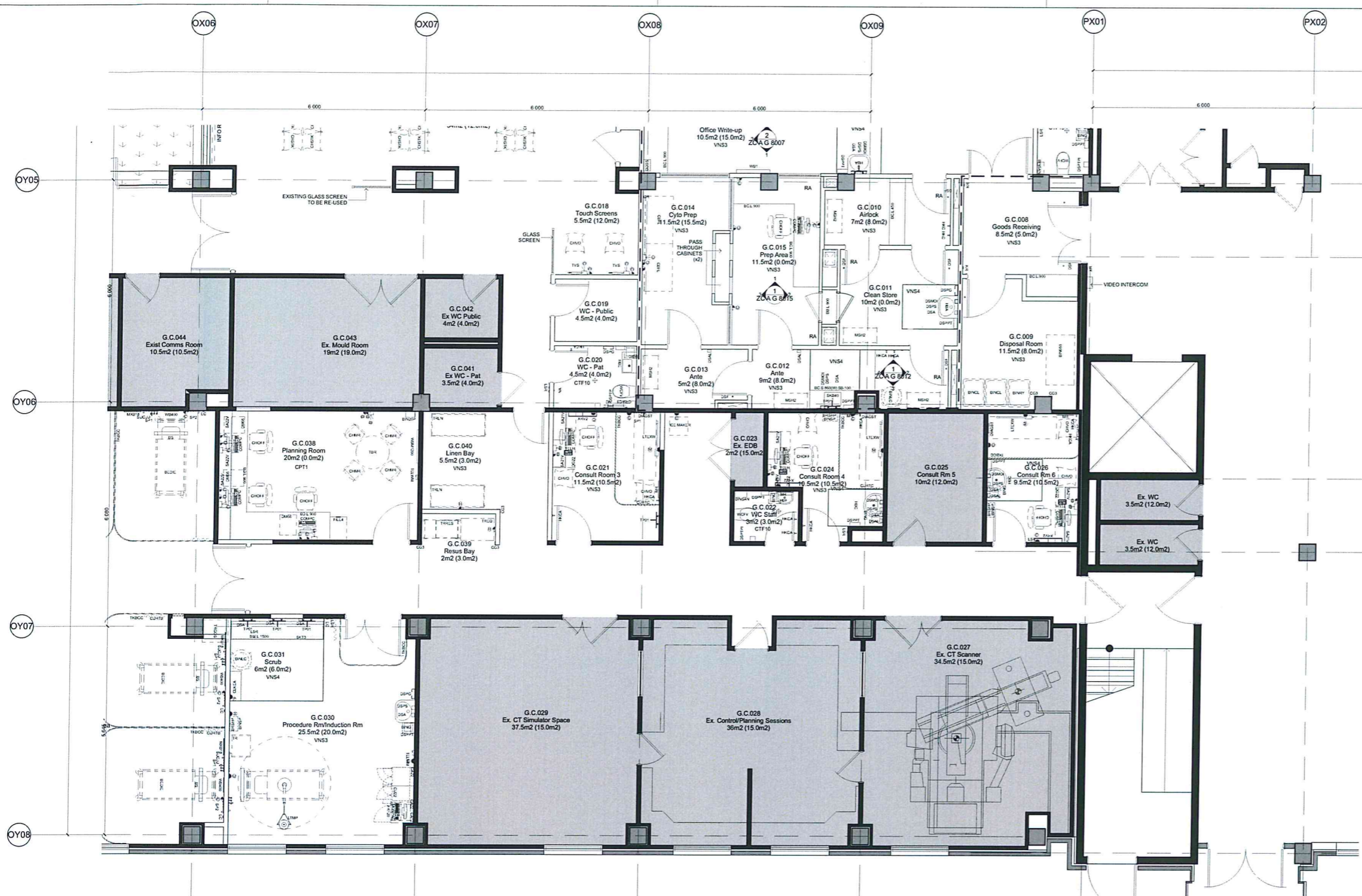



NSW GOVERNMENT
 Planning
 Issued under the Environmental Planning and Assessment Act 1979
 Approved Application No. MP10-0056
 granted on the 4/7/11
 Signed [Signature]
 Sheet No. 16 of 19



NOTE:
 PLANS ARE
 INDICATIVE ONLY
 AND SUBJECT TO
 CHANGE

00	11.10.10	PRELIMINARY ISSUE			
No.	DATE	DESCRIPTION OF REVISION	REV'D BY	CHECKED BY	
					
					
					
PROJECT: LIVERPOOL HOSPITAL REDEVELOPMENT STAGE 2.1 ELIZABETH STREET LIVERPOOL, NSW, 2170 DRAWING TITLE: MILESTONE 3-4 ZONE C FF&E DRAWINGS GROUND - AREA 17 SCALE: 1:50@B1 DATE: 09.09.2010 PROJECT NUMBER: 08501 DRAWING NUMBER: ZC A G 3017 ISSUE: 00					



00	11.10.10	PRELIMINARY ISSUE	KH
No.	DATE	DESCRIPTION OF REVISION	REV'D BY
LEVEL 2.0 - 3.0 FLOOR STREET LIVERPOOL, NSW 2170			
MANAGING CONTRACTOR			
LEVEL 3.0 - 3.0 FLOOR STREET LIVERPOOL, NSW 2170			
ARCHITECTS			
PROJECT: LIVERPOOL HOSPITAL REDEVELOPMENT STAGE 2.1 ELIZABETH STREET LIVERPOOL, NSW, 2170			
DRAWING TITLE: MILESTONE 3-4 ZONE C FF&E DRAWINGS GROUND - AREA 18			
SCALE:	DATE:	DRWG/ISSUED BY:	
1:50@B1	09.09.2010	KH	
PROJECT NUMBER:	DRAWING NUMBER:	ISSUE:	
08501	ZC A G 3018	00	

NOTE:
PLANS ARE
INDICATIVE ONLY
AND SUBJECT TO
CHANGE

Issued under the Environmental Planning and Assessment Act 1979

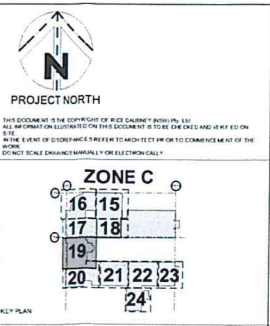
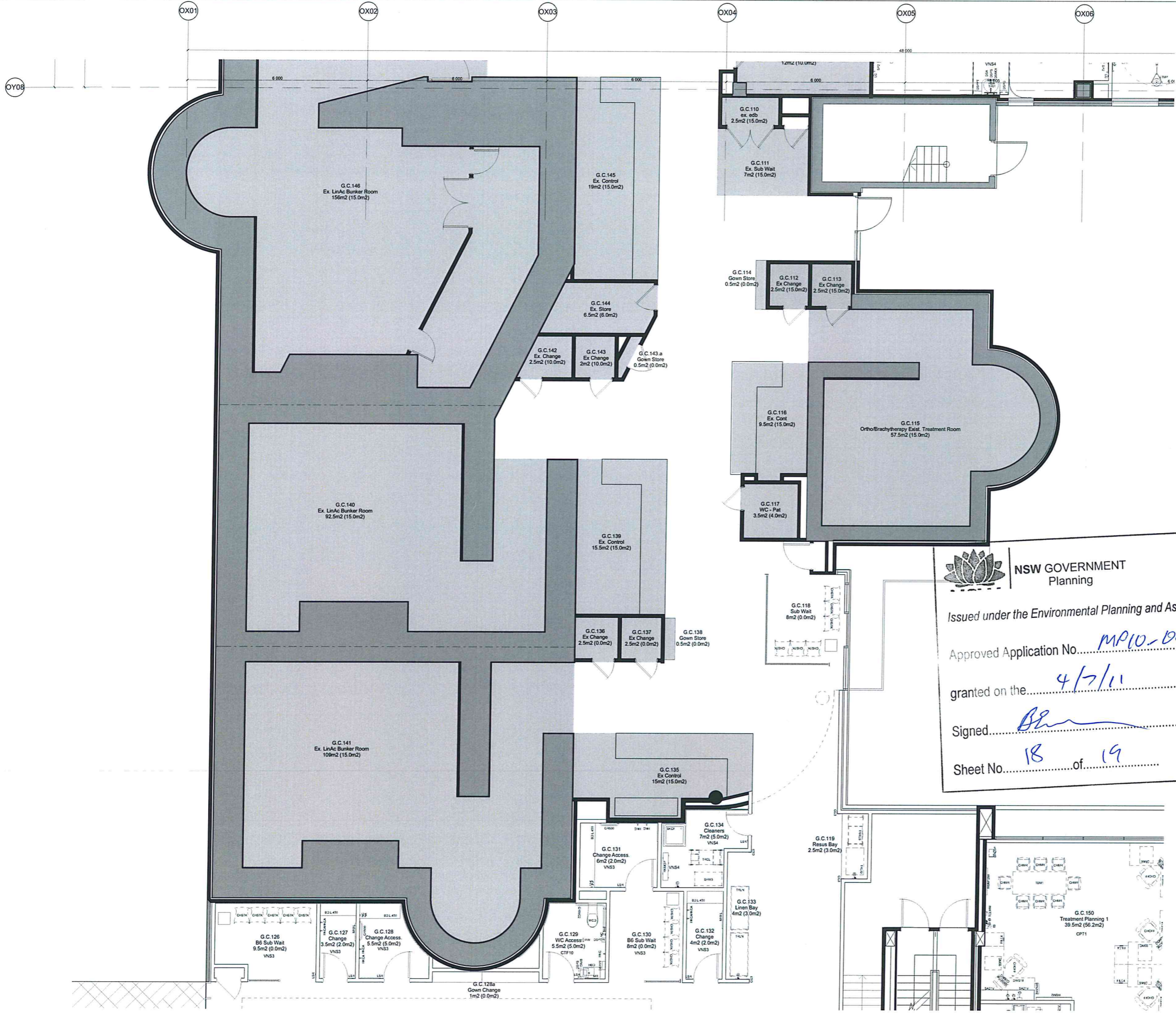
Approved Application No. MP10-0056


granted on the 4/7/10

Signed [Signature]



Sheet No. 17 of 17

00	11.10.10	PRELIMINARY ISSUE	KH
No.	DATE	DESCRIPTION OF REVISION	REV'D BY
LEVEL 2.0 - 3.0 FLOOR STREET LIVERPOOL, NSW 2170			
MANAGING CONTRACTOR			
LEVEL 3.0 - 3.0 FLOOR STREET LIVERPOOL, NSW 2170			
ARCHITECTS			
PROJECT: LIVERPOOL HOSPITAL REDEVELOPMENT STAGE 2.1 ELIZABETH STREET LIVERPOOL, NSW, 2170			
DRAWING TITLE: MILESTONE 3-4 ZONE C FF&E DRAWINGS GROUND - AREA 18			
SCALE:	DATE:	DRWG/ISSUED BY:	
1:50@B1	09.09.2010	KH	
PROJECT NUMBER:	DRAWING NUMBER:	ISSUE:	
08501	ZC A G 3018	00	



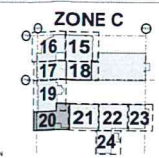

NSW GOVERNMENT
 Planning
 Issued under the Environmental Planning and Assessment Act 1979
 Approved Application No. MP10-10056
 granted on the 4/7/11
 Signed [Signature]
 Sheet No. 18 of 19

NOTE:
PLANS ARE
INDICATIVE ONLY
AND SUBJECT TO
CHANGE

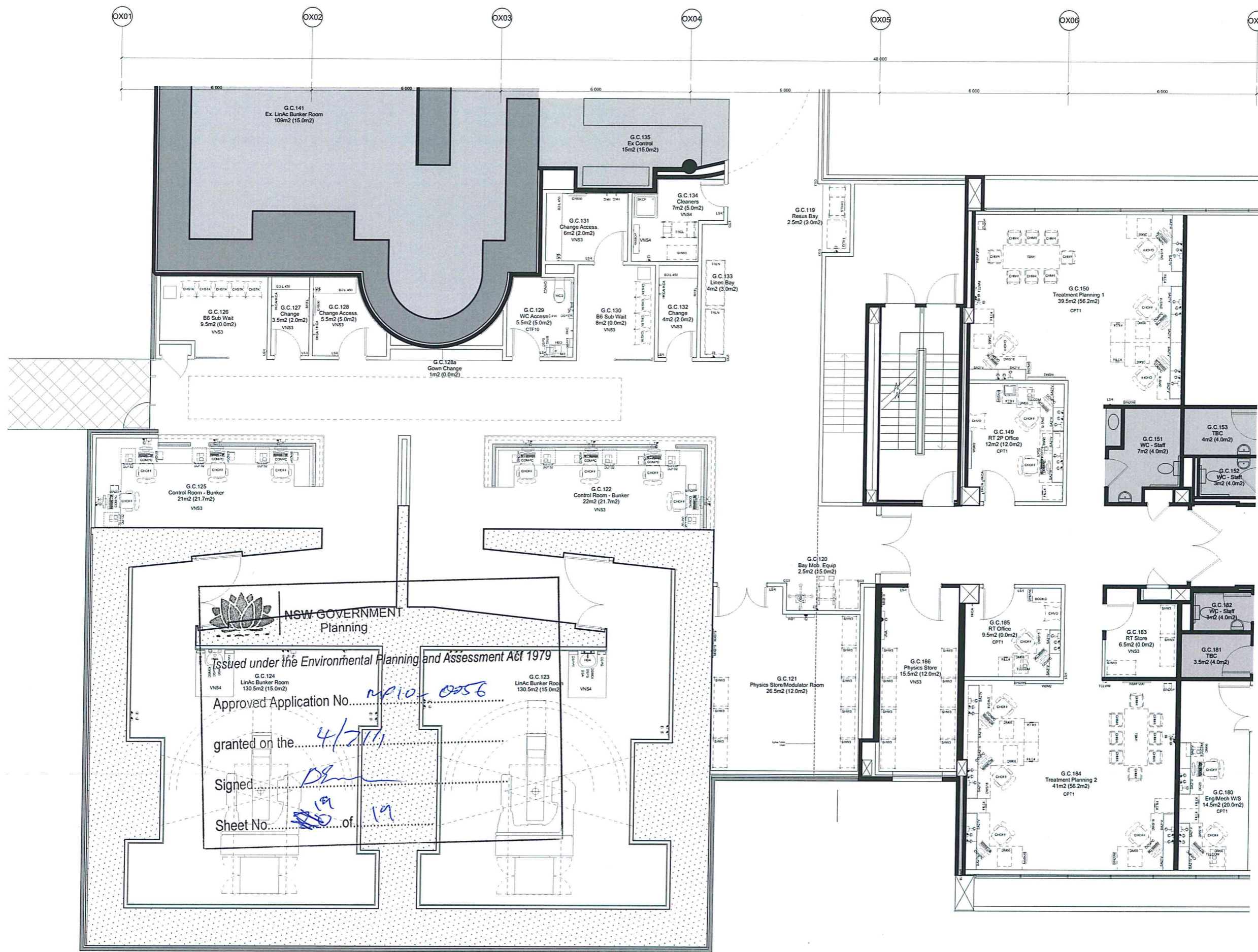
00	11.10.10	PRELIMINARY ISSUE	KH
NO.	DATE	DESCRIPTION OF REVISION	REVISED BY
ARCHITECTS/ENGINEERS			
SYDNEY SOUTH WEST AREA HEALTH SERVICE NSW HEALTH			
LEVEL 124 MILLERS POINT LIVERPOOL, NSW 2170			
MANAGING CONTRACTOR			
 Bovis Lend Lease			
LEVEL 124 MILLERS POINT 32 HOSKIN ROAD MILLERS POINT, NSW 2170			
ARCHITECTS			
 RICE DAUBNEY ANALYSIS DESIGN AND IMPLEMENTING ARCHITECTURE			
110 WALKER STREET NORTH SYDNEY 2060 T: 02 9550 2888 F: 02 9550 3174 RICE@RICE-DAUBNEY.COM www.ricedaubney.com.au			
PROJECT			
LIVERPOOL HOSPITAL REDEVELOPMENT STAGE 2.1 ELIZABETH STREET LIVERPOOL, NSW, 2170			
DRAWING TITLE			
MILESTONE 3-4 ZONE C FF&E DRAWINGS GROUND - AREA 19			
SCALE	DATE	DESIGNED	
1:50@B1	09.09.2010	KH	
PROJECT NUMBER	DRAWING NUMBER	ISSUE	
08501	ZC A G 3019	00	



PROJECT NORTH
 THIS DOCUMENT IS THE PROPERTY OF WDC GROUP. ANY UNLAWFUL REPRODUCTION OR DISSEMINATION OF THIS DOCUMENT IS STRICTLY PROHIBITED. ALL INFORMATION CONTAINED HEREIN IS UNCLASSIFIED AND NOT FOR DISSEMINATION TO THE PUBLIC. ANY INFORMATION CONTAINED HEREIN IS UNCLASSIFIED AND NOT FOR DISSEMINATION TO THE PUBLIC.



KEY PLAN



NSW GOVERNMENT
 Planning
 Issued under the Environmental Planning and Assessment Act 1979
 Approved Application No. MP10-0056
 granted on the 4/7/11
 Signed [Signature]
 Sheet No. 18 of 19

NOTE:
 PLANS ARE
 INDICATIVE ONLY
 AND SUBJECT TO
 CHANGE

00	11.10.10	PRELIMINARY ISSUE	KH
No.	DATE	DESCRIPTION OF REVISION	REVISED BY
PROJECT: LIVERPOOL HOSPITAL REDEVELOPMENT STAGE 2.1 ELIZABETH STREET LIVERPOOL, NSW, 2170			
DRAWING TITLE: MILESTONE 3-4 ZONE C FF&E DRAWINGS GROUND - AREA 20			
SCALE:	DATE:	DESIGNED BY:	
1:50@B1	09.09.2010	KH	
PROJECT NUMBER:	DRAWING NUMBER:	ISSUE:	
08501	ZC A G 3020	00	