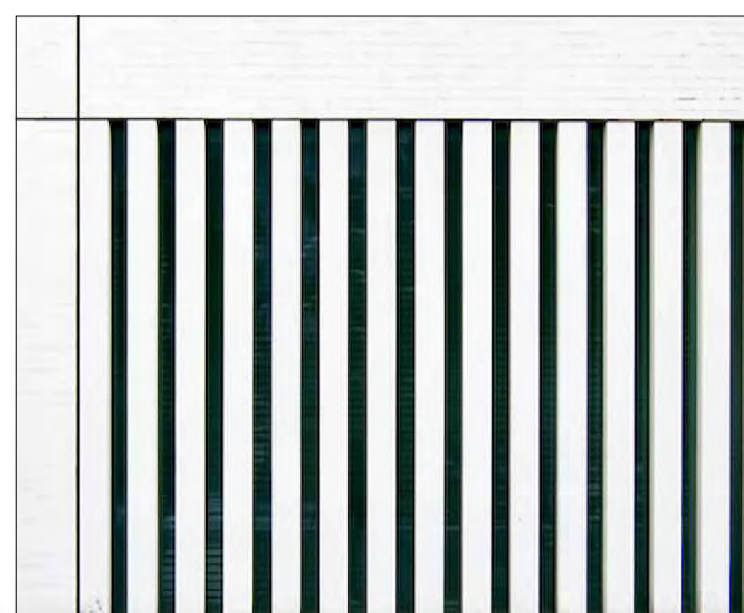


**INTELLECTUAL PROPERTY**  
© COPYRIGHT BVN ARCHITECTURE PTY LIMITED. UNLESS OTHERWISE ADVISED IN WRITING, ALL RIGHTS TO USE THIS DOCUMENT ARE RESERVED TO BVN ARCHITECTURE PTY LIMITED. THIS DOCUMENT MAY ONLY BE USED FOR THE SPECIFIC AND EXPLICIT PROJECT FOR WHICH IT HAS BEEN CREATED AND COPIED, OR REPRODUCED IN ANY MANNER. THE DOCUMENT MAY NOT BE OTHERWISE USED, OR COPIED, OR UNAUTHORIZED USE OF THIS DOCUMENT IS AT THE USER'S SOLE RISK AND WITHOUT LIMITING BVN'S RIGHTS THE USER RELEASES AND INDEMNIFIES BVN FROM AND AGAINST ALL LOSS OR DAMAGE.

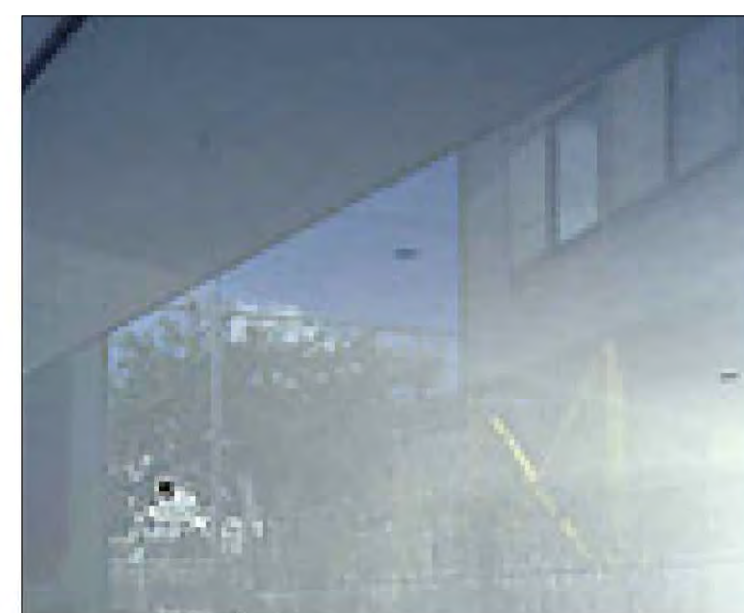
ISSUE	DATE	FOR
1	16.07.10	SPP PDF
2	19.08.10	DA
3	23.08.10	DA



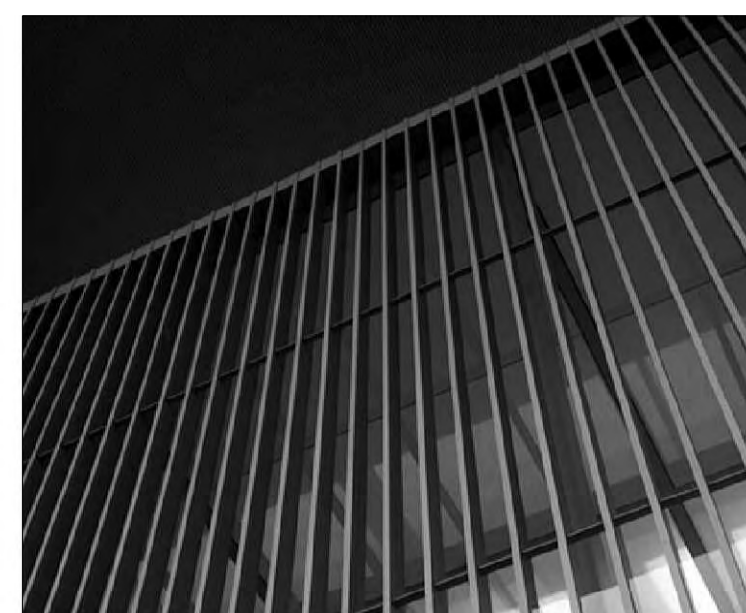
RC - REINFORCED CONCRETE



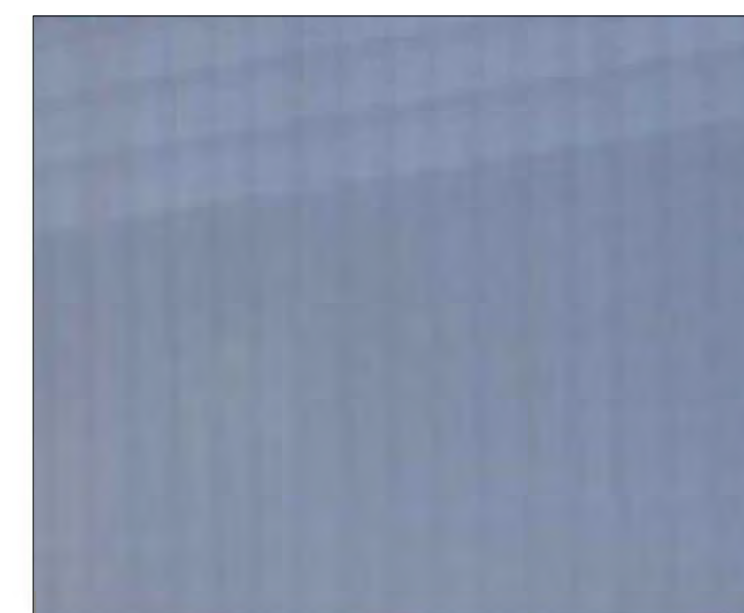
GRC - GLASS REINFORCED CEMENT



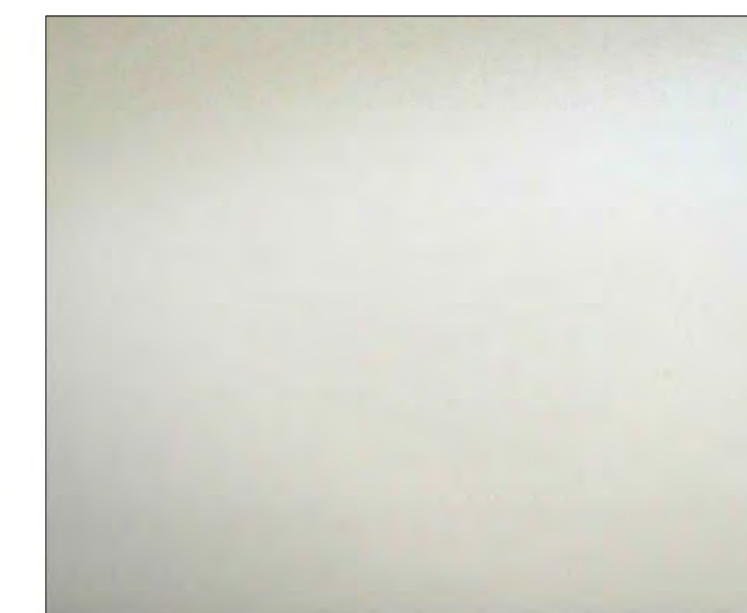
G - GLAZING UNIT (PANELISED CURTAIN WALL)



VL - VERTICAL LOUVRE WITH GLAZING BEHIND



TP - TRANSLUCENT FACADE PANEL



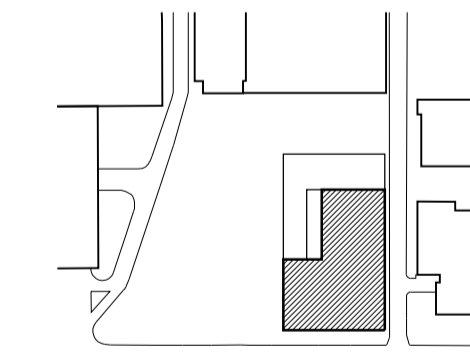
MFP - METAL FACADE PANEL



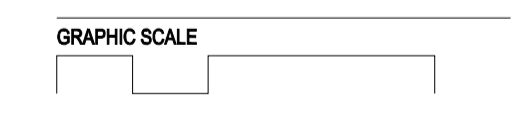
PROJECT

WESTMEAD  
MILLENNIUM INSTITUTE &  
RESEARCH HUB  
BVN PROJECT NUMBER

s0911005  
DRAWING KEY



TRUE NORTH PROJECT NORTH



SCALE

NTS DO NOT SCALE  
STATUS

PRELIMINARY  
DRAWING

MATERIAL SAMPLES

DRAWING NUMBER	ISSUE
DA-Z-30	3