

6 Assessment of Significance

A primary step in the process of cultural heritage management is the assessment of significance. Cultural significance is defined in the Burra Charter as meaning *aesthetic, historic, scientific or social value for past, present or future generations* (Article 1.2).

Not all sites are equally significant and not all are worthy of equal consideration and management. The significance of a site is not fixed for all time; what is considered as significant at the time of assessment may change as similar items are located, more research is undertaken and community values change. This does not lessen the value of the heritage approach, but enriches both the process and the long-term outcomes for future generations as the nature of what is conserved and why also changes over time (Pearson and Sullivan 1995:7).

Heritage significance relating to Aboriginal sites, objects and places in NSW is generally assessed through scientific criteria as defined by the DECCW guidelines (*NPWS Aboriginal Heritage Guidelines* 1997:5-11), and cultural significance held by Aboriginal communities. As per the guidelines detailed in the *Precinct Assessment Method for Aboriginal Cultural Heritage in the Sydney Growth Centres* (Context 2004:17-19), this assessment will also assess significance in accordance with the seven SHR criteria of the Heritage Branch, DoP (formerly NSW Heritage Office), as defined in *Assessing Heritage Significance* (NSW Heritage Office, 2001).

6.1 Assessment Criteria

6.1.1 Heritage Branch, NSW Department of Planning

The seven criteria are designed to assess and identify the heritage significance of items, places and archaeological sites in NSW. These criteria are consistent with DECCW professional guidelines for the assessment of significance of Aboriginal sites, objects and places, as discussed below.

An item will be considered to be of State (or local) significance if, in the opinion of the Heritage Council, it meets one or more of the following criteria:

Criterion a) an item is important in the course, or pattern, of NSW's cultural or natural history (or the cultural or natural history of the local area). This criteria is consistent with aspects of DECCW's Scientific Significance (Representativeness and Rarity) criteria;

Criterion b) an item has strong or special association with the life or works of a person, or group of persons, of importance in NSW's cultural or natural history (or the cultural or natural history of the local area);

Criterion c) an item is important in demonstrating aesthetic characteristics and/or a high degree of creative or technical achievement in NSW (or the local area);

Criterion d) an item has strong or special association with a particular community or cultural group in NSW (or the local area) for social, cultural or spiritual reasons. This area of Criterion complies with DECCW's Cultural Significance criteria;

Criterion e) an item has potential to yield information that will contribute to an understanding of NSW's cultural or natural history (or the cultural or natural history of the local area). This area of Criterion complies with DECCW's Scientific Significance (Archaeological Research Potential) criteria;

Criterion f) an item possesses uncommon, rare or endangered aspects of NSW's cultural or natural history (or the cultural or natural history of the local area). This area of Criterion is consistent with DECCW's Scientific Significance (Representativeness) criteria;

Criterion g) an item is important in demonstrating the principal characteristics of a class of NSW's Cultural or natural places or environments (or in the local area). This area of Criterion is consistent with DECCW's Scientific Significance (Rarity) criteria.

6.1.2 DECCW Aboriginal Heritage Significance Criteria

DECCW professional guidelines for the assessment of significance of Aboriginal sites, objects and places discuss two types of significance: cultural significance and archaeological significance (NPWS *Aboriginal Heritage Guidelines* 1997:5-11). These significances comply with Heritage Branch criteria, as discussed below.

Cultural Significance (SHR Criterion d)

This area of assessment concerns the value(s) of a site or feature to a particular community group – in this case the local Aboriginal community or communities. Aspects of social significance are relevant to sites, items and landscapes that are important, or have become important, to the local Aboriginal community. This importance involves both traditional links with specific areas as well as an overall concern by Aboriginal people for sites and landscapes generally and their continued protection. Aboriginal cultural significance may include social, spiritual, historic and archaeological values. Aboriginal cultural significance assessments can only be made by the relevant Aboriginal communities.

This area of assessment is consistent with *Criterion d* of the Heritage Branch guidelines, which includes any or all aspects of social, cultural or spiritual values held by a community or group.

Scientific Significance

Scientific significance is assessed using criteria to evaluate the contents of a site, state of preservation, integrity of deposits, representativeness of the site type, rarity/uniqueness and potential to answer research questions on past human behaviour (NPWS, 1997:5). The NPWS guidelines recommend the following criteria for assessing archaeological significance:

- *Archaeological Research Potential* - significance may be based on the potential of a site or landscape to explain past human behaviour. It can incorporate the intactness, stratigraphic integrity or state of preservation of a site, the association of the site to other sites in the region or a datable chronology. This area of assessment is consistent with *Criterion e* of the Heritage Branch guidelines;
- *Representativeness* - all sites are representative of those in their class (site type/subtype); however, this issue relates to whether particular sites should be conserved to ensure that a representative sample of the archaeological record is retained. Representativeness is based on an understanding of the regional archaeological context in terms of site variability in and around the Study Area, the resources already conserved and the relationship of sites across the landscape. This area of assessment is consistent with *Criterion f* and aspects of *Criterion a* of the Heritage Branch guidelines; and
- *Rarity* - defines how distinctive a site may be, based on an understanding of what is unique in the archaeological record and consideration of key archaeological research questions (i.e. some sites are considered more important due to their ability to provide scientific or cultural information). It may be assessed at local, regional, state and national levels. This area of assessment is consistent with *Criterion g* and aspects of *Criterion a* of the Heritage Branch guidelines.

6.2 Scientific Significance Assessment

6.2.1 Archaeological Research Potential (SHR Criterion e)

MFH#2

Creek lines in the region are likely to contain evidence of past Aboriginal activity. However, test excavation at site MFH#2 found that its subsurface extent comprised a low density background scatter of stone artefacts, of types common in the region (Dallas 2000). As such, the site is considered to have **low** research potential. However, an area to the west of MFH#2, extending upslope to a ridge between Quarter Sessions Road and the Hume Highway, is considered to have moderate archaeological potential (see Section 5.3.1).

EPCS10 and SWRL Sites 1 & 2

Sites EPCS10 and SWRL Sites 1 and 2 comprise a moderate density of stone artefacts, of types common in the region. The high level of disturbance caused by erosion and vehicle use of the area indicates that the landform is unlikely to contain undisturbed *in situ* archaeological deposits. In addition, the number and type of artefacts recorded at these sites is not indicative of complex archaeological deposits. As such, the sites are likely to represent incidental, background Aboriginal activity within the region. However, when taken in context with the surrounding sites of EPCS8, EPCS4, SWRL Site 5 and DD1, these sites have the potential to reveal a continuity of use of the landscape in this area, between Cabramatta and Maxwells Creeks. These sites are considered as having **moderate** research potential.

EPCS8

Creek lines in the region are likely to contain evidence of past Aboriginal activity. As the track in this area has been built up and the creekline modified, it is unlikely that archaeological deposits would be intact. This area of the headwater tributaries of Cabramatta Creek is considered to have potential for substantial archaeological deposit. As such, the site is considered to have **moderate** research potential. Further, when taken in context with the surrounding sites of SWRL Sites 1-2, EPCS10, EPCS4, SWRL Site 5 and DD1, these sites have the potential to reveal a continuity of use of the landscape in this area, between Cabramatta and Maxwells Creeks.

EPCS7

EPCS7 was located by AMBS on a ridge above Cabramatta Creek. AMBS (2003a:25) considered the site to have moderate archaeological potential, as it was located 10-15 m from the creek bank where the topsoil profile is 10-50cm deep, and the creek corridor in this area was relatively undisturbed. As such, the site is considered to have **moderate** research potential. Further, when taken in context with the surrounding sites of EPCS8, SWRL Sites 1-2 and EPCS10, this site has the potential to reveal a continuity of use of the landscape in the area around Cabramatta Creek.

SWRL Site 3

SWRL Site 3 is located on a creek flat in a low-lying and swampy area, and the moderate level of disturbance indicates that the landform is unlikely to contain substantial or undisturbed *in situ* archaeological deposits. In addition, the number and type of artefacts recorded at the site is not suggestive of a complex archaeological deposit. As such, the site is likely to represent incidental, background Aboriginal activity within the region. The site is considered to have **low** research potential.

SWRL Site 4

SWRL Site 4 has no archaeological research potential, being a single artefact which is out of context.

ISF1, SWRL Site 5, DD1 & EPCS4

Although Dallas (1999:14, 22) assessed ISF1 and DD1 as containing a low density of artefacts in a disturbed context, of low significance and unlikely to have archaeological deposit, the current investigation has located further artefacts in this area, at SWRL Site 5 and EPCS4. When taken in context with the surrounding landscape, the area is considered to be relatively undisturbed. Further, the previous AMBS study considered EPCS4 to have a high potential for *in situ* subsurface archaeological deposit, due to its prime geographic location on a slope within the same creek confluence as EPCS3, and a high cultural significance (AMBS 2003a:25, 31). The current study therefore considers these four sites to have **high** research potential. In summary, they are located in an elevated area between two second order creeks and have high potential for *in situ* subsurface archaeological deposit given the relatively minor level of disturbance in the area. Furthermore, the number and type of artefacts recorded at these sites are suggestive of an archaeological deposit of some complexity. When taken in context with the surrounding sites of EPCS8, EPCS10 and SWRL Sites 1-2, these sites have the potential to reveal a continuity of use of the landscape in this area, between Cabramatta and Maxwells Creeks.

SWRL Sites 6, 8 & 10

SWRL Sites 6, 8 & 10 are located in the general vicinity of Cabramatta Creek and have moderate potential for *in situ* subsurface archaeological deposit, given the relatively shallow level of ground disturbance. Although the number of artefacts recorded on the surface of these sites is suggestive of an archaeological deposit of some complexity, test excavations in the area by Navin Officer (2007) have revealed a low density of artefacts, concentrated on the low slopes of the creek, c.200m north of these sites. As such, these sites are considered to have **low** research potential.

SWRL Site 7

SWRL Site 7 comprises a low density of stone artefacts, of types common in the region. The high level of disturbance caused by the construction of the Upper Canal and vehicle use of the area indicates that the landform is unlikely to contain undisturbed *in situ* archaeological deposits. As such, the site is considered to have **low** research potential.

SW1

Heritage Concepts (2006) identified that the area in which SW1 was located had been subject to disturbance from market gardening and agriculture, and was low-lying and prone to becoming water-logged. As such, it is considered that this landform is unlikely to contain substantial or undisturbed *in situ* archaeological deposits. Further, the isolated quartz artefact recorded at the site is not suggestive of a complex archaeological deposit. As such, the site is likely to represent incidental, background Aboriginal activity within the region. The site is considered to have **low** research potential.

SWRL Site 9

Creek lines within the region are likely to contain evidence of past Aboriginal activity. Although SWRL Site 9 has been subject to disturbance by the construction of an electricity transmission line and a bridge across Kemps Creek, and as such is unlikely to have intact archaeological deposits, the length of Kemps Creek on this property is considered to have potential for substantial archaeological deposit. As such, the larger area containing this site is considered to have **moderate** research potential.

6.2.2 Representativeness (SHR Criterion f)

ISF1, MFH#2, EPCS4, 7, 8 & 10, DD1, SW1 and SWRL Sites 1-10

Stone artefact sites are the most common type of site previously recorded in the local region. Such site types represent a continuity of use of water resources across the study area. It is considered likely that a background scatter of such artefacts is present throughout similar landforms in the region. Sites ISF1, MFH#2, EPCS7, EPCS10, SW1 and SWRL Sites 1-4 and 6-8 are likely to represent such incidental, background Aboriginal activity in the region, while sites EPCS4, EPCS8, DD1 and SWRL Sites 5 and 9 are likely to represent archaeological deposits of some complexity, though still representative of Aboriginal use of the area. All identified sites are considered to be representative of the local archaeology.

6.2.3 Rarity (SHR Criterion g)

ISF1, MFH#2, EPCS4, 7, 8 & 10, DD1, SW1 and SWRL Sites 1-10

The complex of stone artefact sites present in the vicinity of the study area may be regarded as being relatively common in the local region. Such sites are the most common site type both locally and regionally, and are therefore not considered to have archaeological rarity. However, the edge-ground axe fragment at SWRL Site 5 is a relatively rare artefact type for the region.

6.2.4 Summary of Archaeological Significance

Based on current scientific evidence, Aboriginal stone artefact sites ISF1, MFH#2, SW1 and SWRL Sites 3-4, 6-8 and 10 are regarded as being of **low scientific significance**, while sites EPCS4 and 8, DD1 and SWRL Sites 5 and 9 are regarded as being of **moderate scientific significance**. EPCS7 and 10 and SWRL Sites 1 and 2 are considered to have **moderate scientific significance** due to their proximity to the surrounding sites of EPCS4, EPCS8, SWRL Site 5 and DD1, and their potential to reveal a continuity of use of the landscape as a part of this complex of sites. A summary of the assessed levels of archaeological significance for identified sites is presented in Table 6.1, below.

Table 6.1 Assessed levels of scientific significance for identified sites

Assessed Site	Archaeological Research Potential			Representativeness	Rarity	Overall Scientific Significance
	Low	Moderate	High			
MFH#2	✓			Local	No	Low
SW1	✓			Local	No	Low
SWRL 1		✓		Local	No	Moderate
SWRL 2		✓		Local	No	Moderate
SWRL 3	✓			Local	No	Low
SWRL 4	No research potential			Local	No	Low
SWRL 5			✓	Local	Rare	Moderate
SWRL 6	✓			Local	No	Low
SWRL 7	✓			Local	No	Low
SWRL 8	✓			Local	No	Low
SWRL 9		✓		Local	No	Moderate
SWRL 10	✓			Local	No	Low
EPCS4			✓	Local	No	Moderate
EPCS7		✓		Local	No	Moderate
EPCS8		✓		Local	No	Moderate
EPCS10		✓		Local	No	Moderate
ISF1	✓			Local	No	Low
DD1			✓	Local	No	Moderate

6.3 Assessment of Aboriginal Cultural Significance

Aboriginal communities consulted with throughout this project have indicated that, while all Aboriginal heritage sites recorded contain intrinsic cultural significance, there are no further specific cultural significances attached to the identified sites.

7 Conclusions & Recommendations

7.1 Preamble

As a major project under Part 3A of the EP&A Act, the proposed SWRL Stage 2 development does not require permits to be approved or granted under the provisions of the NPW Act; however, heritage best practice guidelines do require that works are undertaken in an appropriate manner.

The following recommendations are based on the results of the background research, Aboriginal community consultation, archaeological field survey and significance assessment as described in this report. Cumulative impacts on the Aboriginal heritage and archaeology of the area are identified in this section, and appropriate research and conservation offsets are recommended. All recommendations have been developed with input from Aboriginal community representatives during the consultation process and field assessment. Given the substantial area traversed by the proposed project, the impact assessment and corresponding recommendations for impact mitigation and management have been based on a landscape-based model of past Aboriginal use of the study area, rather than solely on each surface expression of artefacts (sites).

It should be noted that, as per the *Protocol for Aboriginal Stakeholder Involvement in the assessment of Aboriginal heritage in the Sydney Growth Centres* (Context 2006) and the *Precinct Assessment Method for Aboriginal Cultural Heritage in the Sydney Growth Centres* (Context 2006), recommendations relating to Aboriginal heritage should be made in full consultation with Aboriginal stakeholder communities. As such, the following recommendations have been reviewed and discussed with the Aboriginal groups identified in Section 2.3 prior to report finalisation.

SWRL Sites 1-4, 6 and 8-9 and DD1 (see Figure 5.1) are not located within the impact zone of the proposed project route and are not expected to be impacted by its construction.

ISF1, MFH#2, SW1, EPCS4, EPCS7, EPCS8, EPCS10, and SWRL Site 5 and 10, are located within the impact zone of the current proposed SWRL construction footprint, and SWRL Site 7 is located within 4m of the route. Therefore, these sites will be directly impacted by the project construction. Construction activities impacting these sites will include excavation, levelling and filling, as well as associated infrastructure development, which will destroy the sites and any associated sub-surface archaeological deposit. Given the assessed moderate to low significance of these Aboriginal heritage sites, their destruction represents a minor cumulative impact upon the overall heritage significance and archaeology of the region.

7.1.1 Cumulative Impacts

The project has been developed as an essential part of the South West Growth Centre, which has taken into consideration Aboriginal heritage (among other environmental issues) in its broad scale planning. The development of the rail alignment will, along with the Growth Centre and associated developments discussed in Section 1.3.1, have a cumulative negative impact on Aboriginal heritage.

AMBS' predictive modelling outlined in Section 4.3 identifies stone artefact sites as the most common Aboriginal heritage site type occurring in the local landscape. A review of the environmental and historic context of the local area suggests that the majority of such sites are likely to have been previously impacted and disturbed past land clearing, development, construction and agricultural practices. As such, it has been determined that there is a low likelihood that *in situ* stone artefacts are present in the local region.

Current and future developments in the local area are likely to impact primarily upon previously disturbed stone artefact sites, where it is not possible to avoid such impacts within their development planning and methodology. Recommendations discussed below take into the account the scientific significance of similar site types identified within the project impact area (as discussed in Section 6.2), and make appropriate recommendations based upon the cumulative impacts of associated developments and regional rarity and representativeness.

7.2 Recommendations

7.2.1 General Recommendations

All construction personnel involved in the project works should be made aware of the statutory obligations for Aboriginal cultural materials, particularly as they relate to sites located outside of the land subject to Part 3A approval.

Recommendation 1

Prior to the start of construction works for SWRL Stage 2, all construction personnel and contractors should be briefed on the statutory requirements of the NPW and EP&A Acts and their obligations regarding protection of Aboriginal places and objects.

Any impacts on Aboriginal heritage sites located beyond the boundaries of lands identified in the Part 3A approval, including the collection of artefacts, requires the prior written consent of the Director-General of the DECCW, under S.87 or S.90 of the NPW Act. Should previously unidentified Aboriginal objects (which are most likely to consist of flaked stone artefacts made of silcrete, mudstone or quartz) be identified during the construction works (e.g. while accessing the rail alignment corridor), the following procedures should be implemented.

Recommendation 2

Should any previously unidentified Aboriginal objects be discovered outside of the land subject to Part 3A approval during the construction works, all work in the vicinity of the find or with the potential to impact the find should stop immediately and the Cultural Heritage Unit of the DECCW should be informed in accordance with Section 91 of the NPW Act. Works should not proceed without the written consent of the DECCW.

Should the proposed development footprint be realigned beyond the identified development corridor surveyed, further archaeological assessment and Aboriginal community consultation should be undertaken.

Recommendation 3

TIDC should consult with appropriate Aboriginal heritage specialists and the local Aboriginal community should there be any modifications or alterations to the current footprint of the proposed development, as identified in this report.

7.2.2 MFH#2 and Adjacent Ridge

Although site MFH#2 has been assessed as having low archaeological significance, it will be extensively impacted by the proposed development. Further, the area to the west of MFH#2, extending upslope to a ridge between Quarter Sessions Road and the Hume Highway, where a potential site compound and stockpile areas are proposed within the SWRL construction footprint, is considered to have moderate archaeological potential for *in situ* subsurface archaeological deposit. This is a relatively undisturbed, elevated area between Bunbury Curran and Maxwells Creeks, which represent reliable water sources. There are also sites in the surrounding area (MFH#2 and MLE1). Site MFH#2 (#45-6-2495) was subject to excavation by Dallas in 2000, and found to comprise a low density background scatter of stone artefacts, of types common in the region, and hence of low archaeological significance.

However, the excavated area was situated on the low-lying area surrounding the creek. More recent work by ENSR suggests that sites are more extensive on elevated areas above reliable water sources, and as such, the ridge is considered to have moderate archaeological potential. This area has the potential to reveal use of the landscape between Bunbury Curran Creek and Maxwells Creek, particularly in relation to use of the landscape in the area around Cabramatta and Maxwells Creeks (see Section 7.2.3). As such, further archaeological investigation of this area is likely to increase the current scientific knowledge of the region. Archaeological investigation of Aboriginal heritage in this area will offset the cumulative impacts arising from development of the rail alignment, particularly on MFH#2. The proposed test excavation area is presented in Figure 7.1.

Recommendation 4

A program of test excavation should be undertaken throughout the impact zone of the project route, site compound and stockpile areas on the slope and ridge between MFH#2 and the Hume Highway, to systematically sample these landforms between Bunbury Curran and Maxwells Creeks and obtain a representative sample of artefacts across the landscape. An area of 20m² on the ridge in the site compound area, and an area of 5 consecutive 1m² pits located at 20m intervals between Quarter Sessions Road and the eastern end of the stockpile areas, may be appropriate for excavation.

7.2.3 EPCS4, 7, 8 & 10, ISF1 and SWRL Site 5

The current and previous assessment of EPCS4, 7, 8 and 10 and SWRL Site 5 as individual sites may be summarised as follows:

- The current assessment considers EPCS4 and SWRL Site 5 to have moderate archaeological significance and high research potential. AMBS (2003a:37) previously recommended test excavation and salvage of the archaeologically sensitive area at the creek confluence associated with EPCS3 and 4.
- The current assessment considers EPCS7 to have low archaeological significance and research potential on its own. AMBS (2003a:26) considered this site to be part of an area of high sensitivity, due to its location on a high point overlooking the creek, and recommended that it be preserved.
- The current assessment considers EPCS8 to have moderate research potential and archaeological significance.
- The current assessment considers EPCS10 to have low archaeological significance and research potential on its own. AMBS (2003a:26) considered this site to be part of an area of high sensitivity, due to its proximity to the creek, and recommended that it be preserved.

Each of these sites is currently located within the impact zone of the proposed SWRL Stage 2 route and site compounds. Although each individual site varies in archaeological potential and significance, when considered together they have the potential to reveal a continuity of activity in the landscape around Cabramatta and Maxwells Creeks, on Ingleburn and Landcom land. As such, further archaeological investigation of these sites and the surrounding landscape of the Ingleburn and Landcom land is likely to increase the current scientific knowledge of the region. Archaeological investigation of Aboriginal heritage in this area will offset the cumulative impacts arising from development of the rail alignment. The proposed test excavation area is presented in Figure 7.2.

Recommendation 5

A program of test excavation should be undertaken throughout the impact zone of the project route in the areas where it proposes to cross Ingleburn and Landcom land, and at EPCS7, to systematically sample the various landforms of this area around Cabramatta and Maxwells Creeks and obtain a representative sample of artefacts across the landscape. An

area of 20m² in each of the six site areas, and an area of 5 consecutive 1m² pits located at 20m intervals along the remainder of the route as it traverses the area between SWRL Site 5 and EPCS7, may be appropriate for excavation.

Adjacent to this section of the project corridor is the Edmondson Park precinct, a proposed urban development. The project's 2003 Masterplan indicates that significant areas adjacent to the project alignment will be retained as 'environmental protection/conservation' and 'public recreation' areas, with minimal or no development (see Figure 4.5). These conserved areas are to encompass significant portions of the archaeologically sensitive hill and slope landforms, including identified Aboriginal heritage sites and areas of potential archaeological sensitivity. These areas are directly adjacent to sites EPCS4, EPCS7, EPCS8, EPCS10 and SWRL Site 5, and will provide an offset for the unavoidable loss of those sites destroyed by construction of the rail alignment if appropriate care is taken to avoid any impact to these sensitive areas and sites.

Recommendation 6

Current Masterplanning for the Edmondson Park Composite Site indicates that the extent of lands to be retained with minimal or no development as 'environmental protection/conservation' and 'public recreation' is an appropriate offset for the destruction (following further archaeological investigation) of adjacent Aboriginal heritage sites, providing that appropriate care is taken to avoid any impact to these sensitive areas and sites (archaeologically sensitive hill and slope landforms currently planned to be retained; sites DD1, SW2 and SWRL Sites 1-4, 6 and 8; and see also sites within the 'environmental protection/conservation' and 'public recreation' areas in Figure 4.5).

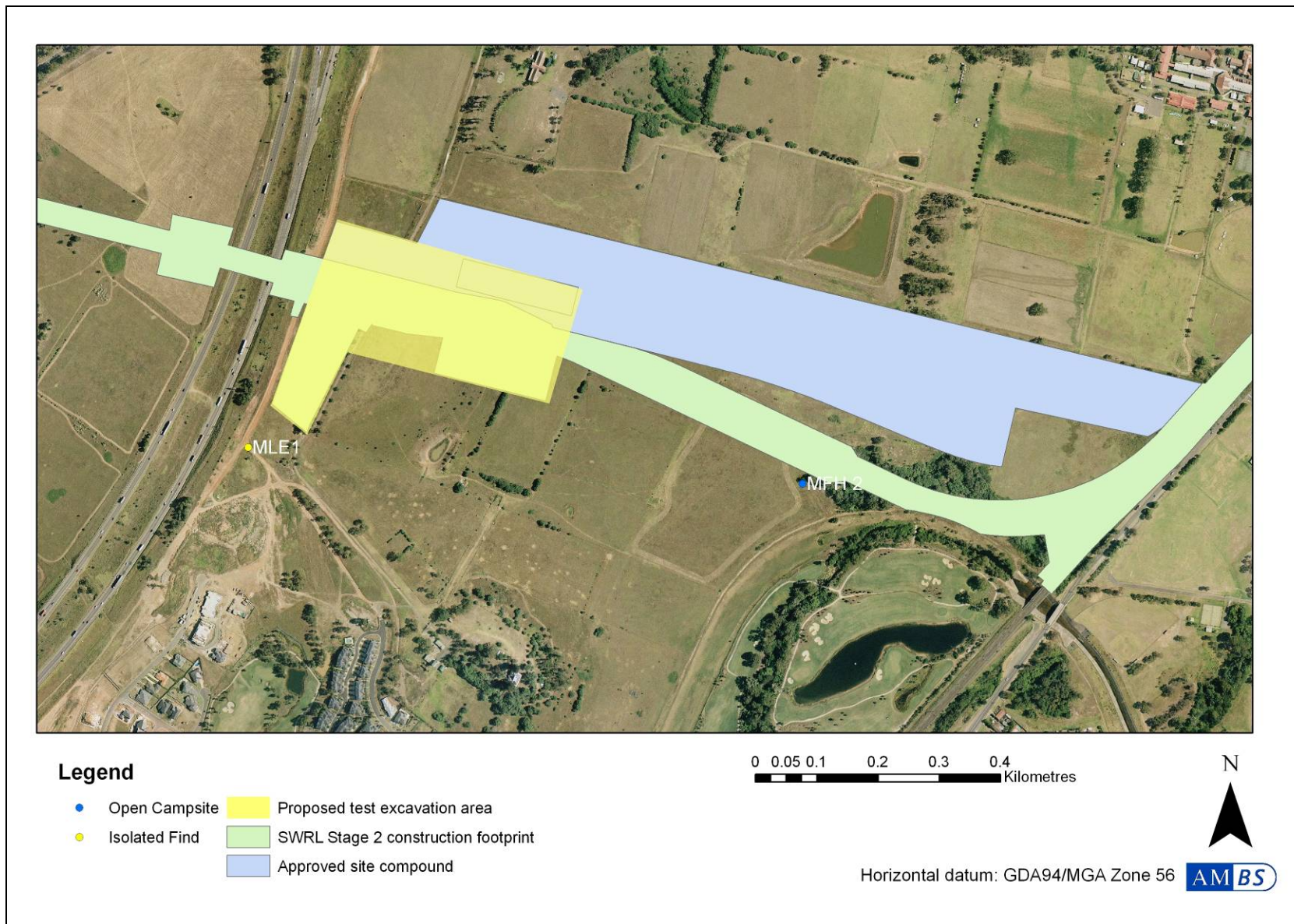


Figure 7.1 Proposed archaeological test excavation area, above Bunbury Curran Creek.

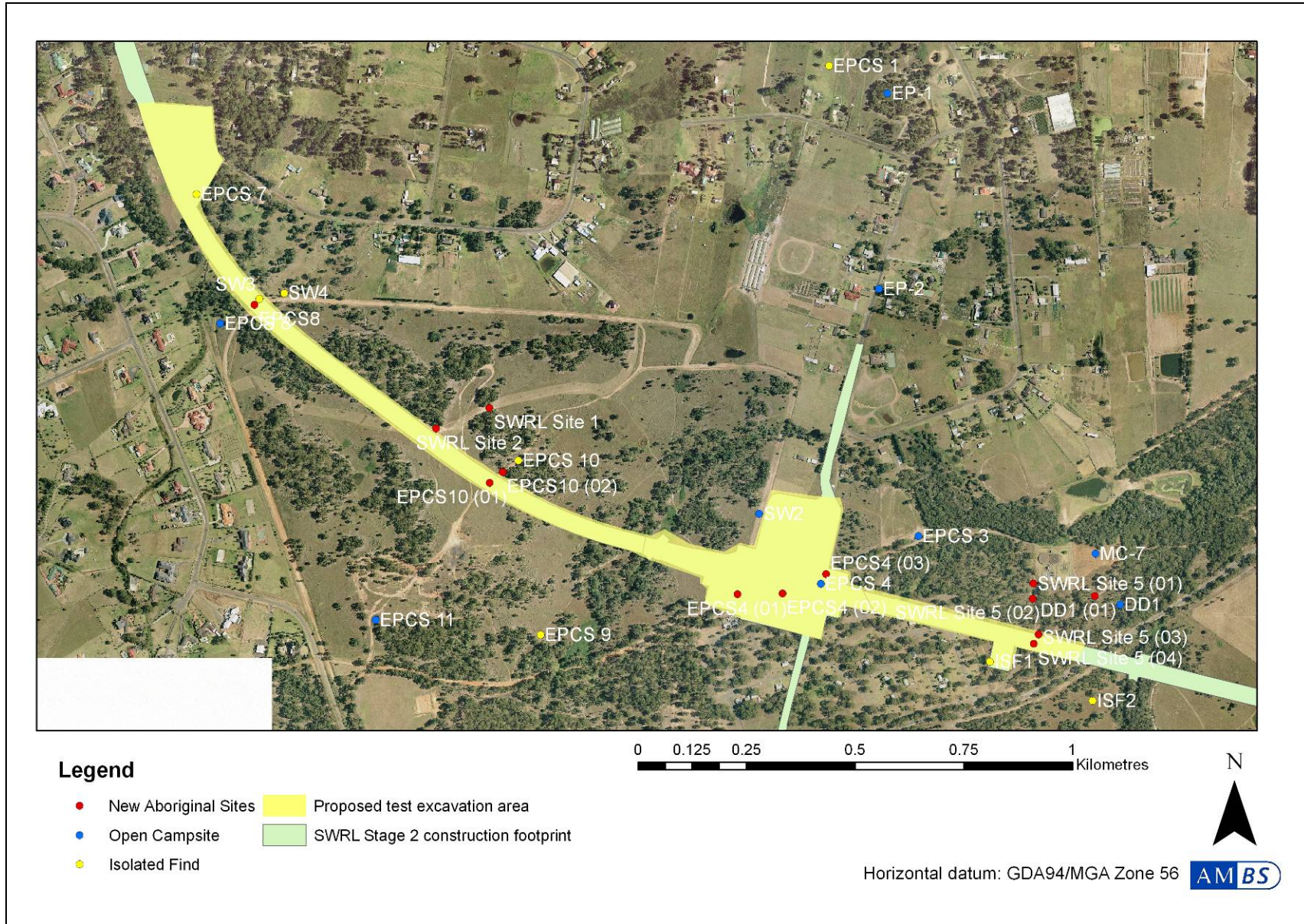


Figure 7.2 Proposed archaeological test excavation area, Cabramatta and Maxwells Creeks.

7.2.4 DD1, SW2 and SWRL Sites 1-4, 6 & 8

DD1, SW2 and SWRL Sites 1-4, 6 and 8 are not located within the impact zone of the proposed project route and hence are not subject to the current Part 3A project approval. Although these sites are regarded individually as being of low research potential and archaeological significance, when these sites are considered within the larger landscape, together with EPCS4, 8 and SWRL Site 5, they have the potential to reveal a continuity of use of the landscape in the area between Cabramatta and Maxwells Creeks, on Ingleburn and Landcom land. As such, should any impacts be proposed to these eight sites (e.g. from access routes and temporary structures), they should be included in the proposed test excavations (see Section 7.2.3), for which a Section 87 permit would be required from DECCW. However, as a priority in planning any associated impacts (e.g. access routes and temporary structures), these eight sites should be avoided.

Recommendation 7

The locations of DD1, SW2 and SWRL Sites 1-4, 6 and 8 should be clearly demarcated with high visibility temporary fencing, such as star pickets and mesh barrier fencing, to prevent accidental impacts arising from the construction works.

Recommendation 8

Any impacts on land outside the project construction area, such as access routes or temporary structures, should avoid sites DD1, SW2 and SWRL Sites 1-4, 6 and 8. Should any unavoidable impacts be proposed to sites DD1, SW2 and SWRL Sites 1-2, then they should be included in the proposed test excavations (see Recommendation 5).

7.2.5 SWRL Site 10

SWRL Site 10 has been assessed as having low research potential and low archaeological significance. Results from archaeological excavations undertaken in the local area on similar landforms by Navin Officer in 2007 indicate that it is unlikely that subsurface archaeological deposits are present at the site, and that archaeological material is limited to a surface scatter of stone artefacts. As such, further archaeological investigation of this site, including archaeological excavation, is unlikely to increase the current scientific knowledge of the region. However, the proposed construction of a substation and associated access road will directly impact on artefacts, and as such, the Aboriginal community should be offered the opportunity to collect and relocate artefacts outside of the construction area prior to works beginning.

Recommendation 9

Aboriginal communities should be offered the opportunity to relocate artefacts at SWRL Site 10 outside of the construction impact area prior to works beginning.

Recommendation 10

Although the proposed project route will impact SWRL Site 10, given its low level of significance and research potential, no further archaeological investigation of this site is required.

7.2.6 SW1 and SWRL Site 7

Site SW1 and SWRL Site 7 have been assessed as having low research potential and low archaeological significance. As such, further archaeological investigation of these sites is unlikely to increase the current scientific knowledge of the region.

Recommendation 11

Although the proposed project route will impact SW1 and SWRL Site 7, given their low level of significance and research potential, no further archaeological investigation of these sites is required.

The rail corridor will cross the Upper Canal via a bridge, the construction of which will include access by machinery within the Canal easement, and the construction of piers for the bridge within 10m of the Canal, which will have an impact on SWRL Site 7. Given that the easement is narrow on the eastern side of the Canal, where SWRL Site 7 is located, it is unlikely that protective barriers for the site would be practical. SW1 is also within a potential stockpile area. As such, the Aboriginal community should be provided with the opportunity to remove the identified artefacts from the construction area.

Recommendation 12

Aboriginal communities should be offered the opportunity to relocate artefacts at SW1 and SWRL Site 7 outside of the construction impact area prior to works beginning.

7.2.7 SWRL Site 9

SWRL Site 9 is not currently within the impact zone of the proposed route, and is unlikely to have intact archaeological deposits due to previous disturbance of the area by the construction of an electricity transmission line and a bridge across Kemps Creek. However, the area on this property (227 McCann Road) where the project route is proposed to cross Kemps Creek is considered likely to have substantial archaeological deposit and is therefore regarded to have high archaeological sensitivity and moderate research potential. As such, further archaeological investigation of this area is likely to increase the current scientific knowledge of the region. Archaeological investigation of sites within this area will offset the cumulative impacts arising from development of the rail alignment.

Recommendation 13

A program of test excavation in conjunction with representatives of the local Aboriginal communities should be undertaken throughout the impact zone of the project route in the area where it proposes to cross Kemps Creek to determine the density and type of archaeological deposit in this area of high archaeological sensitivity. An area of 500m² on each side of Kemps Creek, within the proposed project impact zone, may be appropriate for excavation.

The proposed test excavation area is presented in Figure 7.3.

7.2.8 Area of Archaeological Sensitivity 12

An area in the vicinity of an access track, at the southern end of 511 Bringelly Road and extending to the northern end of the western-most McCann Road property for the stabling facility, is an elevated area in the landscape, in the immediate vicinity of a tributary of Kemps Creek, in a partly vegetated area that is relatively undisturbed. It is considered likely to have reasonably substantial archaeological deposit and is therefore regarded to have moderate archaeological sensitivity and moderate research potential. Given the lack of archaeological survey and excavation in this western area of the proposed SWRL route, further archaeological investigation of this area is likely to increase the current scientific knowledge of the area. Archaeological investigation of this area will offset the cumulative impacts arising from development of the rail alignment.

Recommendation 13

A program of test excavation in conjunction with representatives of the local Aboriginal communities should be undertaken throughout the impact zone of the access track between Bringelly Road and the stabling facility, in the elevated area above a tributary of Kemps Creek, to determine the density and type of archaeological deposit in this area of moderate archaeological sensitivity. An area of 20m² in this elevated area, within the proposed project impact zone, may be appropriate for excavation.

The proposed test excavation area is presented in Figure 7.3.

7.2.9 Requests from Stakeholder Aboriginal Communities

Four of the stakeholder Aboriginal communities, each of which have been included in the consultation for the current phase of works, provided feedback on the AMBS October 2008 draft Aboriginal Heritage Assessment report at the end of 2008 (see Appendix C). These communities requested to be involved in any future Aboriginal heritage fieldwork for the project works. In addition, DCAC requested that signage about the history of the traditional owners be erected at the new railway stations when the project has been constructed, and DACHA requested that they are consulted in decisions regarding lands that are to be set aside as offsets. CBNTCAC considered that sites MFH#2 and SWRL Site 7 were unlikely to be impacted within the project construction body, and that they should be protected from any accidental impact arising from the construction; however, based on the current Concept Plan, these two sites will be impacted by the construction of the project. CBNTCAC also did not consider that it could appropriately be said whether the conservation areas in the current Masterplan were adequate offsets for the sites that are to be impacted by the project. As identified above in Section 7.2.3, AMBS considers that the conservation areas specified in the current Masterplanning for the Edmondson Park Composite Site are to encompass significant portions of the archaeologically sensitive hill and slope landforms, including identified Aboriginal heritage sites and areas of potential archaeological sensitivity. As such, it is considered by AMBS that these conservation areas will provide an offset for the unavoidable loss of sites destroyed by construction of the rail alignment if appropriate care is taken to avoid any impact to these sensitive areas and sites.

As previously mentioned in Section 2.3, a revised draft report was provided to each registered Aboriginal community group for review and comment in April 2010, prior to the field inspection of the proposed access tracks at Edmondson Park Station and the stabling facility. The feedback received to date has been in agreement with the recommendations (see Appendix B and C). A meeting or workshop will be arranged to discuss further Aboriginal social/cultural values to integrate into the report, if required. Any additional feedback will be appended to this report upon receipt. Further Aboriginal community consultation should be undertaken regarding changes to this report since the Aboriginal community groups were given the opportunity to review the report in April 2010, prior to the additional site inspections in April 2010.

7.3 Conclusion

The proposed project corridor will have an adverse affect on Aboriginal heritage sites in the area; however, the above recommendations are designed to provide guidance on appropriate management of Aboriginal heritage issues, outline further archaeological investigations necessary to salvage and recover archaeological information prior to construction, and to provide some mitigation of impacts on Aboriginal heritage values.

7.3.1 Indigenous Heritage Impact Management – Project Statement of Commitments

Environmental protection and open space areas within the Growth Centres will provide protection for remnant biodiversity and sites of Aboriginal heritage associated with Cabramatta and Maxwell's Creek.

Additionally, the project will add the following specific measures to the Statement of Commitments in the Environmental Assessment to offset negative impacts on Aboriginal heritage:

- a Heritage Management Plan (HMP) will be prepared prior to construction and incorporated into the project CEMP/ECM. The HMP would address the following:
 - details of any additional archaeological investigations to be undertaken and any associated licences or approvals required;
 - procedures to be implemented if previously unidentified Aboriginal objects are discovered during construction; and
 - an education program for construction personnel on their obligations for Aboriginal cultural material.
- a Heritage Interpretation Plan would be developed in consultation with the Aboriginal community and local councils, and incorporated into architectural elements or urban design treatments;
- an Aboriginal Participation Plan would be developed in accordance with the NSW Government's Aboriginal Participation in Construction Guidelines (2007); and
- Aboriginal cultural heritage and archaeology offsets will be incorporated into the Biodiversity Offsets Strategy to be developed for non-certified areas consistent with the Biodiversity Certification of the State Environmental Planning Policy (Sydney Region Growth Centres 2006) and in consultation with Strategic Land Release Project Office of the NSW Department of Planning, DECCW, DEWHA and local councils.

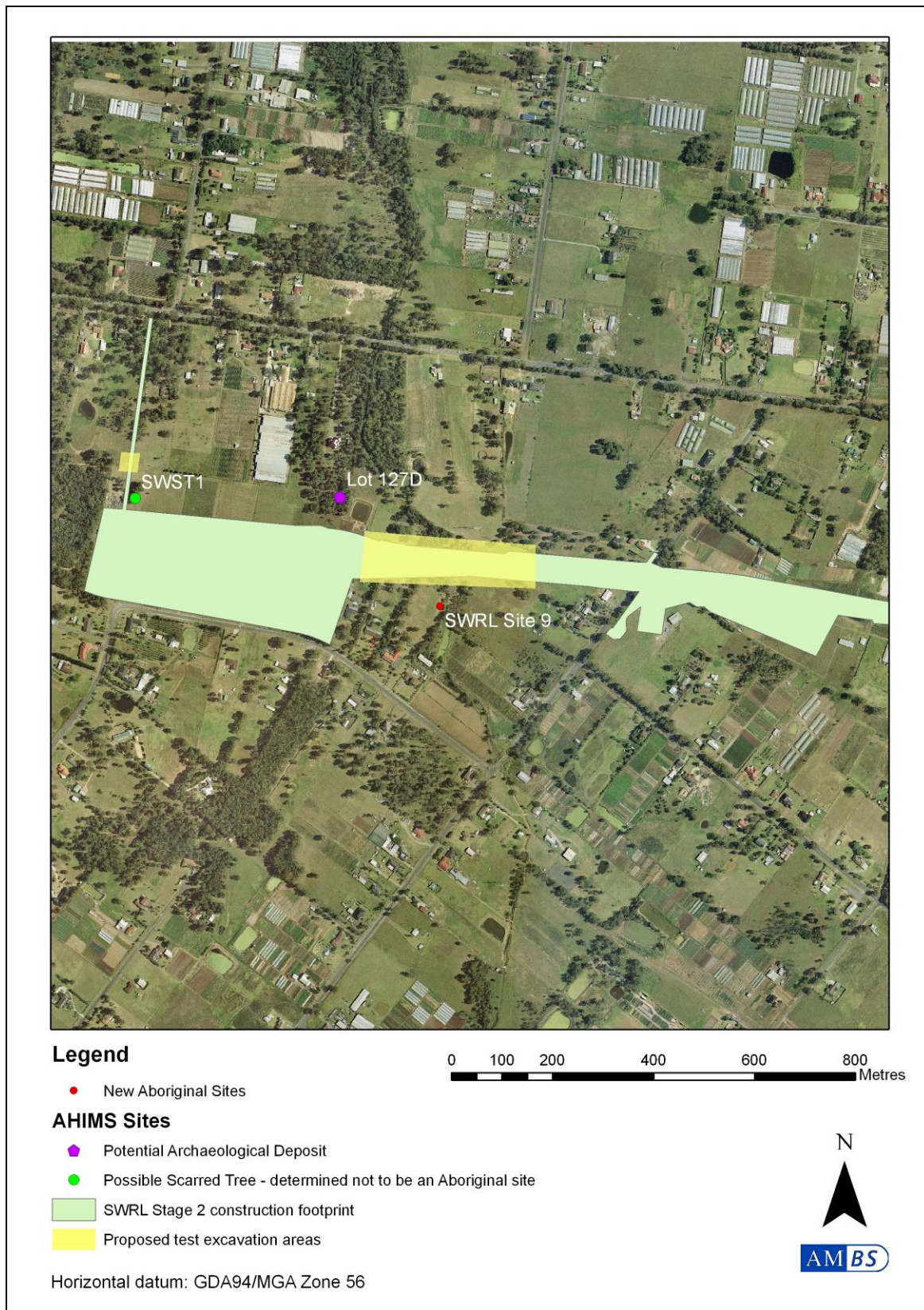


Figure 7.3 Proposed archaeological test excavation areas, Kemps Creek, and access track between Bringelly Road and the train stabling facility.

References

- Archaeological and Heritage Management Solutions (AHMS) (2004) *Cowpasture Road Upgrade, Southern Section (Main Street to Camden Valley Way), Liverpool, NSW: Aboriginal Archaeological Assessment*. Consultancy report to NSW RTA.
- AMBS (2000a) *Mungerie Park Town Centre Archaeological Salvage Excavations Near Kellyville, Cumberland Plain, NSW*. Consultancy report to the Department of Urban Affairs and Planning.
- AMBS (2000b) *Maxwells Creek Archaeological Salvage and Monitoring, Prestons, NSW*. Consultancy report to the P R & C M Drafting Services on behalf of Maraya Holdings Pty Ltd.
- AMBS (2002a) *Liverpool-Parramatta Transitway (LPT) Orphan School Creek Archaeological Test Excavations*. Consultancy report to the Roads and Traffic Authority (RTA).
- AMBS (2002b) *Proposed Parklea Leisure Centre: Stanhope Gardens Archaeological Salvage Excavations*. Consultancy report to Blacktown City Council.
- AMBS (2003a) *Edmondson Park Composite Site Master Plan: Aboriginal Heritage Management Plan*. Consultancy report to Liverpool and Campbelltown City Councils.
- AMBS (2003b) *Archaeological Assessment for the Proposed Extension of Lyn Parade, Prestons, NSW*. Consultancy report to Liverpool City Council.
- Attenbrow V (1981) *Mangrove Creek Dam – Salvage Excavation Project*. Consultancy report to NSW National Parks and Wildlife Service on behalf of the Department of Public Works.
- Attenbrow V (1987) *The Upper Mangrove Creek Catchment: A Study of Quantitative Changes in the Archaeological Record*. Unpublished PhD Thesis, University of Sydney.
- Attenbrow V (2003) *Sydney's Aboriginal Past: Investigating the Archaeological and Historical Records*. University of NSW Press Ltd, Sydney.
- Attenbrow V (2004) *What's Changing: Population size or land-use patterns? The Archaeology of Upper Mangrove Creek, Sydney Basin*. Pandanus Books, Australian National University, Canberra.
- Austral Archaeology Pty Ltd (2006) *Horningsea Park: Proposed Ryman Road Carrier Section 4 – Aboriginal Cultural and Archaeological Heritage Assessment*. Consultancy report to Sydney Water.
- Australia International Council on Monuments and Sites (1999) *The Burra Charter: The Australia ICOMOS Charter for Places of Cultural Significance 1999*. Australia ICOMOS inc.
- Bannerman S M & P A Hazleton (1990) *Soil Landscapes of the Penrith 1:100 000 Sheet*. Soil Conservation Service of NSW, Sydney.
- Brayshaw H & E Rich (1996) *Western Sydney Orbital EIS, Prestons to Cecil Park, Aboriginal Archaeology*. Consultancy report to RTA.
- Brayshaw H & E White (1999) *Western Sydney Orbital EIS, Prestons to Cecil Park, Aboriginal Archaeology*. Consultancy report to RTA.

Central West Archaeological and Heritage Services (CWAHS) (2003) *A Preliminary Report on the Results of Sub-Surface Archaeological Testing at WSO PAD 6 Location, Maxwells Creek, near the Junction of Ash Road & Camden Valley Way, Prestons*. Consultancy report to Abigroup Leighton Joint Venture.

Chapman G A & C L Murphy (1989) *Soil Landscapes of the Sydney 1:100 000 Sheet*. Soil Conservation Service of NSW, Sydney.

Context (2006) NSW *The Consultants Brief for Identifying and Assessing Aboriginal Cultural Heritage in the Sydney Growth Centres*.

Dallas M (1989a) *Archaeological Study of the Land within the City of Blacktown within the Parklea Release Area*. Consultancy report to Baulkham Hills Shire Council.

Dallas M (1989b) *Macquarie Field House Estate: Archaeological Survey*. Consultancy report to Wellings Smith & Byrnes.

Dallas M (1998) *Archaeological Survey of the Department of Housing Project 12257 Kiawaka Estate, Casula, NSW*. Consultancy report to Department of Housing.

Dallas M (1999) *Preliminary Archaeological Assessment of the Department of Defence land at Ingleburn, NSW*. Consultancy report to Department of Defence.

Dallas M (2000) *Aboriginal Archaeological Test Excavation Report: Macquarie Fields House*. Consultancy report to Winten Property Group.

Dallas M, Irish P & Steele D (2002) *Aboriginal Archaeological Survey & Assessment Report: Lots 1, 3, 5 & 7 in DP 828871 and Lot 1 in DP 612265 Hume Highway, Glenfield, NSW*. Consultancy report to Mepstead & Associates P/L.

English A (1994) *Archaeological Survey of the Proposed Moomba to Sydney Ethane Pipeline: Wilton to Botany, NSW*. Consultancy report to CMPS&F Pty Ltd and the Pipeline Authority.

Godden Mackay Logan (GML) (2000) *Macquarie Links, Hotel Access Road, Campbelltown: Archaeological Research Design*. Consultancy report to ACOR Consultants Pty Ltd.

Gorecki P & M Dallas (2000) *A Cultural Heritage Survey of a Proposed Residential Development Along Glenfield Road, Glenfield, NSW*. Consultancy report to Lean & Hayward.

Haglund L (1980) *Report on an Archaeological Survey in the City of Blacktown*. Consultancy report to NSW NPWS.

Haglund L (1984) *Archaeological Survey at Glenfield, near Liverpool, NSW*. Consultancy report to Don Fox Planning Pty Ltd.

Hazleton P A & P J Tille (1990) *Soil Landscapes of the Woollongong – Port Hacking 1:100 000 Sheet*. Soil Conservation Service of NSW, Sydney.

Heritage Concepts (2006) *South West Rail Link Environmental Assessment – Technical Paper 6: Preliminary Assessment of Aboriginal Archaeological and Cultural Heritage Values*. Consultancy report to Parsons Brinckerhoff.

Jo McDonald Cultural Heritage Management Pty Ltd (JMCHM) (1997) *Interim Heritage Management Report: ADI Site St. Marys. Volume 1: Text*. Consultancy report to Lend Lease-ADI Joint Venture in Response to the Section 22 Committee Interim Report.

JMCHM (1999a) *Test Excavation of PAD 5 (RH/SP9) and PAD 31 (RH/CC2) for Rouse Hill (Stage 2) Infrastructure Project at Rouse Hill and Kellyville, NSW*. Consultancy report to Rouse Hill Infrastructure Consortium (RHIC).

JMCHM (1999b) *Survey for Archaeological Sites: Proposed Sewer Main (Lurnea Carrier Section 4) and Related Sewer Lines on Maxwells Creek at Prestons, NSW*. Consultancy report to P.R. & C.M. Drafting Services on behalf of Gusti and Maraya Holdings.

JMCHM (2001) *Salvage Excavation of Six Sites along Caddies, Second Ponds, Smalls, and Cattai Creeks in the Rouse Hill Development Area, NSW*. Consultancy report to RHIC.

JMCHM (2003) *Archaeological Assessment of Indigenous Heritage Constraints: University of Western Sydney, Campbelltown Campus*. Consultancy report to APP Corporation on behalf of Landcom.

Koettig M & P J Hughes (1983) *An Archaeological Survey of the Route of the Proposed Rail Link between East Hills and Glenfield*. Consultancy report to Dames & Moore.

Kohen J (1986) *Prehistoric Settlement in the Western Cumberland Plain: Resources, Environment and Technology*. Unpublished PhD Thesis, School of Earth Sciences, Macquarie University, Sydney.

Kohen J L, E D Stockton & M A Williams (1984) "Shaws Creek KII rockshelter, a prehistoric occupation site in the Blue Mountains piedmont, eastern New South Wales". *Archaeology in Oceania* 19(2):57-72.

Lampert R J (1971) *Burrill Lake and Currarong: Coastal Sites in Southern New South Wales*. Department of Prehistory, Research School of Pacific Studies, Australian National University, Canberra.

Liston C (1988) *Campbelltown: The Bicentennial History*. Allen & Unwin, Sydney.

McDonald J (1992a) *Archaeological Investigation Project 12603 Cowpasture Road, Hoxton Park, NSW*. Consultancy report to Department of Housing, Liverpool.

McDonald J (1992b) *Archaeological Survey of the Proposed 33kV Transmission Line between Bringelly and Rossmore, NSW*. Consultancy report to EDAW Australia on behalf of Prospect Electricity.

McDonald J (1994) *Dreamtime Superhighway: An Analysis of Sydney Rock Art and Prehistoric Information Exchange*. Unpublished PhD thesis, Department of Prehistory and Anthropology, Australian National University, Canberra.

McDonald J (1999) *Survey for Archaeological Sites: Proposed Rouse Hill stage 2 Infrastructure Works at Rouse Hill, Parklea and Kellyville, NSW*. Consultancy report to GHD for RHIC.

McDonald J & E Rich (1993) *Archaeological Investigations for Rouse Hill Infrastructure Project [Stage 1] Works along Caddies, Smalls and Second Ponds Creek, Rouse Hill and Parklea, NSW. Final Report on Test Excavation Program. Volumes I and II*. Consultancy report to the Rouse Hill Joint Venture.

Mills R & J Kelton (2002) *Report on the Archaeological Sub-Surface Testing Program within the Western Sydney Orbital Alignment*. Consultancy report to NSW Roads and Traffic Authority.

Nanson G C, R W Young & E D Stockton (1987) “Chronology and the palaeoenvironment of the Cranebrook Terrace (near Sydney) containing artefacts more than 40,000 years old”. *Archaeology in Oceania* 22(2):72-8.

National Parks and Wildlife Service (NPWS) (1997) *Aboriginal Cultural Heritage Standards and Guidelines Kit*.

Navin Officer (1991) *Archaeological Survey of the Prestons Industrial Release Area, Liverpool, NSW*. Consultancy report to Liverpool Property Owners and Occupiers Association.

Navin Officer (1993) *Further Archaeological Investigation of the M5 Casula Link Corridor at Prestons, NSW*. Consultancy report to NSW RTA.

Navin Officer (1997) *Archaeological Survey: Proposed Industrial Development Area, The Crossroads, Liverpool, NSW*. Consultancy report to Multiplex Constructions (NSW) Pty Ltd.

Navin Officer (1998) *Archaeological Subsurface Testing Program: Proposed Industrial Development Area, The Crossroads, Liverpool, NSW*. Consultancy report to Multiplex Constructions (NSW) Pty Ltd.

Navin Officer (2003) *Georges River Program Stage 2: Proposed Recycled Water Pipeline and Overflow Abatement Works at Glenfield and Liverpool Sewage Treatment Plants – Environmental Impact Statement, Assessment of Indigenous Heritage*. Consultancy report to Parsons Brinckerhoff.

Navin Officer (2006) *Leppington Caravan Park Redevelopment: Aboriginal Archaeological Survey*. Consultancy report to Mepstead & Associates Pty Ltd.

Navin Officer (2007) *Locality LB, Edmondson Park: Archaeological Subsurface Testing Program*. Consultancy report to Manidis Roberts.

NSW Heritage Office (2001) *Assessing Heritage Significance* (NSW Heritage Manual update).

Pearson, M., Sullivan, S. (1995) *Looking After Heritage Places: The Basics of Heritage Planning for Managers, Landowners and Administrators*. Melbourne University Press, Carlton.

Rich E & J McDonald (1995) *Archaeological Salvage of Site WH3 (#45-5-965): Project 12603 Cowpasture Road, West Hoxton, NSW*. Consultancy report to Lean Lackenby & Hayward on behalf of Landcom.

Smith L (1989a) *Northern Cumberland Plain Planning Study*. Consultancy report to the NSW National Parks and Wildlife Service.

Smith L (1989b) *Liverpool Release Areas: Archaeological Site Survey & Planning Study*. Consultancy report to Liverpool City Council.

Stockton E (1993) “Archaeology of the Blue Mountains”. In E Stockton (Ed.), *Blue Mountains Dreaming: Aboriginal Heritage*, p23-52. Three Sisters Productions, Springwood.

Stockton E D & W Holland (1974) “Cultural sites and their environment in the Blue Mountains”. *Archaeology and Physical Anthropology in Oceania* 9(1):36-65.

White E (2001) *McCann Road & Bringelly Road, Leppington (Lot 70 DP260492): Archaeological Survey for Aboriginal Sites*. Consultancy report to Lean & Hayward and Kiora Land Company.

Appendix A

Summary Table of Previous Local Aboriginal Heritage Investigations

Reference	Location	Reason for Investigation	Findings	Distance from Study Area
Heritage Concepts (2006)	South West Rail Link	Preliminary Aboriginal archaeological assessment	2 scatters, 4 isolated finds & 1 possible scarred tree identified, of which 1 isolated find (SW 3) is in the vicinity of the rail alignment & may be impacted. Artefacts are mudstone, silcrete, quartz & chert	Includes whole of study area
AMBS (2003a)	Edmondson Park	Aboriginal Heritage Management Plan: proposed urban development	25 artefacts throughout 8 scatters, & 7 isolated finds (consisting of silcrete, mudstone & quartz whole & broken flakes, flaked pieces & heat-shattered artefacts), of which all are located within the search area. 3 of the scatters (EPCS4, EPCS8 & EPCS10) are in the vicinity of the rail alignment & may be impacted	Includes part of study area (Edmondson Park)
Smith (1989b)	Liverpool Release Areas	Archaeological survey & planning study	19 scatters comprising 137 artefacts, 5 isolated finds, & 1 scarred tree within c.2700ha, of which the scarred tree & 12 artefact scatters are located within the search area. Artefacts are predominantly silcrete, with some indurated mudstone, quartz, chert, quartzite & basalt flakes, flaked pieces, blade cores, & a scraper	Includes part of study area (Edmondson Park)
Dallas (1989b)	Macquarie Fields House Estate	Archaeological survey	2 low-density scatters comprising 10 artefacts of silcrete & chert (flaked pieces, flakes & cores), located within the search area. Site MFH#2 (45-6-2495) is in the vicinity of the rail alignment but has previously been subject to test excavation (see below)	Includes part of study area (Macquarie Fields)
Dallas, Irish & Steele (2002)	Macquarie Fields House (between railway & Hume Highway)	Archaeological survey	No new sites located. Land assessed as unlikely to contain extensive intact or <i>in situ</i> archaeological deposit	Includes part of study area (Macquarie Fields)
Dallas (2000)	Macquarie Fields House	Archaeological test excavation for proposed subdivision: Site MFH#2	17 1m ² backhoe trenches in area proposed to be impacted by perimeter road & house blocks, & 4 backhoe trenches in landfill within the PAD. Low density "background scatter" of stone artefacts recovered (predominantly small pieces of waste material)	Immediately south
Dallas (1999)	Ingleburn Defence Lands	Preliminary archaeological assessment: proposed disposal of Department of Defence land	6 scatters (2 with potential for <i>in situ</i> subsurface deposit) comprising 182 artefacts, & 4 isolated finds, within c.311ha, all of which are located within the search area. Artefacts are predominantly silcrete,	Includes part of study area (Ingleburn)

			with some indurated mudstone, quartz & chert whole & broken/fragmented flakes, flaked pieces, cores, a heat shattered piece & a retouched flake	
Navin Officer (2007)	Edmondson Park	Aboriginal archaeological test excavation: Locality LB	33 artefacts excavated from 68 test pits in area of high sensitivity identified in AMBS (2003a). Permit applied to sites 45-5-3246 & 45-5-3373. Artefacts comprised flakes (including broken & fragmented), microblade elements & Bondi point elements, 2/3 of which were made of silcrete & 1/3 of rhyolitic tuff	Includes part of study area (Edmondson Park/ Leppington)
White (2001)	Leppington	Aboriginal archaeological survey	6 isolated finds (quartzite & chert flakes, broken flakes & bipolar cores) & 1 PAD, all of which are within the search area	Immediately west of study area (Rossmore)
GML (2000)	Macquarie Links Hotel Access Road	Archaeological survey	1 isolated broken chert flake located within the search area, on grader track between Quarter Sessions Road & Hume Highway. Area around artefact defined as a zone of sensitivity; S.90 has been obtained for the site	c.0.4km north
Austral Archaeology (2006)	Horningsea Park	Aboriginal archaeological assessment: proposed Rynan Road Carrier Section 4	2 PADs identified on Cabramatta Creek, both of which are within the search area	c.300m north of study area (Leppington)
Navin Officer (2006)	Casa Paloma Caravan Village, Cowpasture Road/Camden Valley Way, Leppington	Aboriginal archaeological survey: proposed caravan park redevelopment	1 isolated find (silcrete flaked piece), located within the search area	c.300m south of study area (Leppington)
English (1994)	Between Wilton and Botany	Archaeological survey: proposed Moomba to Sydney ethane pipeline	2 isolated finds (a mudstone flake & flaked piece) & 1 scarred tree identified, of which the scarred tree & 1 isolated find are located within the search area	c.500m south of study area (Leppington)
Navin Officer (1997)	Maxwells Creek, The Crossroads	Aboriginal archaeological survey: proposed industrial development area	Zone of archaeological potential identified; later excavated & 2 sites recorded (see below, Navin Officer 1998)	c.700m north of study area (Macquarie Fields)
Navin Officer (1998)	Maxwells Creek, The Crossroads	Aboriginal archaeological test excavation: proposed industrial development area	92 stone artefacts recovered from 16 of 21 test pits excavated at 2 sites (both of which are within the search area), comprising whole & broken flakes, bipolar flakes, backing flakes, whole & fragmented microblades & microcores, Bondi points & flaked pieces made of predominantly silcrete, & some of rhyolitic tuff, chert, chalcedony, quartz &	c.700m north of study area (Macquarie Fields)

			quartzite	
Dallas (1998)	Kiawaka Estate, Casula	Archaeological survey: proposed residential development	2 scatters comprising 26 artefacts, & 3 scarred trees within c.75ha, of which all are located within the search area. Artefacts are predominantly silcrete & chert, with one indurated mudstone & quartz piece, comprising cores, flakes & flaked pieces	c.1km north of study area (Macquarie Fields)
Gorecki & Dallas (2000)	Glenfield	Archaeological survey: proposed residential development	1 isolated artefact (quartzite flake) & 2 PADs, all of which are within the search area	c.1km north of study area (Macquarie Fields)
McDonald (1992a)	Cowpasture Road, Hoxton Park	Archaeological survey & test excavation: proposed residential development	Three stone artefact scatters (all of which are within the search area) comprising 113 flaked, retouched, heat-shattered, bipolar, backed & ground-edged silcrete, mudstone, quartz, basalt & fine-grained siliceous artefacts. Further excavation recommended (see below, Rich & McDonald 1995)	c.1km north of study area (Leppington)
Rich & McDonald (1995)	Cowpasture Road, Hoxton Park	Archaeological salvage excavation: proposed residential development	3686 artefacts recovered, mainly from 2 silcrete knapping floors, including backed artefacts, 2 broken edge-ground axes, retouched, heat-shattered, bipolar & flaked artefacts predominantly made of silcrete, with some mudstone/chert, quartz & igneous stone	c.1km north of study area (Leppington)
Haglund (1984)	Glenfield	Archaeological survey	No sites located	c.1.5km north east of study area (Macquarie Fields)
Koettig & Hughes (1983)	Glenfield	Archaeological survey	No sites located	c.1.5km north east of study area (Macquarie Fields)
Navin Officer (1993)	Proposed M5 Link corridor, Prestons	Aboriginal archaeological test excavation	No Aboriginal artefacts recovered in 57 test probes	c.1.5km north of study area (Macquarie Fields)
CWAHS (2003)	Prestons	Aboriginal archaeological test excavation: WSO PAD 6 site	4 stone artefacts recovered in 21 50cm test pits, from site located within the search area	c.2km north of study area (Macquarie Fields)
Brayshaw & Rich (1996) and Brayshaw & White (1999)	Prestons to Cecil Park section of Western Sydney Orbital	Aboriginal archaeological survey for Environmental Impact Statement (EIS)	6 PADs, & 244 artefacts identified in 19 surface artefact scatters (1 of which was already a registered site) & 11 isolated finds; of which 15 are within the present search area: 10 scatters, 4 isolated finds & 1 PAD. Artefacts are predominantly silcrete, with lesser amounts of indurated mudstone/chert & quartz, & some igneous whole & broken/fragmented flakes, flaked pieces, bipolar cores & flakes, re-touched artefacts, backed artefacts, core-tools, heat-shattered pieces, cores & a cobble tool	c.2.5km north east of study area (Ingleburn)

McDonald (1992b)	Between Bringelly and Rossmore	Archaeological survey: proposed transmission line	1 scatter (within search area) & 1 isolated find comprising flakes, flaked pieces & backed blades of silcrete, indurated mudstone & quartzite. The dominance of indurated mudstone & backed blades was a significant find at this site	c.2.5km north west of study area (Rossmore)
AMBS (2003b)	Lyn Parade, Prestons	Archaeological survey: proposed road extension	1 isolated mudstone broken flake located on vehicle track	c.3km north of study area (Ingleburn)
Mills & Kelton (2002)	Wilson Road, Hinchinbrook	Archaeological test excavations: proposed Western Sydney Orbital (WSO)	Excavation of 16 PADs along WSO alignment located 556 artefacts (predominantly flaked silcrete artefacts, with some mudstone & chert, & small quantities of quartz, volcanic, quartzite & jasper; & some microblade technology) within 1876 test pits. 82 artefacts recovered from 456 pits at PAD1 (closest to study area; within search area), demonstrate more intense occupation at Maxwells Creek	c.3.7km north east of study area (Leppington)
JMCHM (1999b)	Prestons	Archaeological survey: proposed sewer main and lines	1 isolated artefact & 1 scatter (both previously identified), & 1 PAD identified (excavated by AMBS 2000b; see below)	c.4km north of study area (Macquarie Fields)
AMBS (2000b)	Prestons	Archaeological salvage excavation & monitoring: proposed sewer main	151 stone artefacts recovered from 78m ² excavated at 3 areas near Maxwells Creek, comprised mainly of silcrete, mudstone and quartz, with some chert, petrified wood & volcanic stone. Assemblage comprised flaked, heat-shattered, retouched & backed artefacts, & 1 ground stone axe head. Interpreted as evidence of low-density artefact scatter throughout the area	c.4km north of study area (Macquarie Fields)
AHMS (2004)	Leppington	Aboriginal archaeological assessment: Cowpasture Road upgrade	No sites located	c.4km west
Navin Officer (1991)	Prestons Industrial Release Area	Archaeological survey	1 site (2 flaked artefacts of silcrete and chert) located in area of disturbed topsoil, within search area	c.4.5km north of study area (Macquarie Fields)
Navin Officer (2003)	Between Glenfield Sewage Treatment Plant (STP) and Liverpool STP	Aboriginal archaeological assessment: proposed recycled water pipeline and overflow abatement works	3 PADs identified, none of which are within the search area	c.4.5km south east of study area (Macquarie Fields)

Appendix B

Log of Aboriginal Community Consultation

This consultation log is currently in draft form, pending finalisation of the Aboriginal community consultation process.

Date	Organisation	Contact Person	Details
6/02/2008	TLALC	N/A	Called the office to ask about the availability of a site officer to participate in a survey on 18-19 February, and was given Donna's mobile number to contact.
6/02/2008	TLALC	Donna Whillock	Rang and asked if a representative would be available on 18-19 February. She said that neither she nor Glenda Chalker (CBNTCAC) were available on the 18th, but she was free on 19-20 February. She asked me to ring her back to confirm these dates ASAP.
6/02/2008	CBNTCAC	Glenda Chalker	Tried to call several times but was unable to get in contact with Glenda.
6/02/2008	DCAC	Leanne Watson	Rang and asked if a representative would be available on 19-20 February. She said that she would be available and I arranged to fax her the paperwork as soon as the dates were confirmed.
6/02/2008	DACHA	Celestine Everingham	Called to ask about doing a survey on 19-20 February; left message.
6/02/2008	DTAC	Des Dyer	Rang and was told that Gordon Workman was handling all the site survey work now. Des gave me his mobile number.
6/02/2008	DTAC	Gordon Workman	Rang and asked if a representative would be available on 19-20 February. He said that he would be available and asked if I could email him the paperwork as soon as I confirmed the dates.
6/02/2008	DACHA	Celestine Everingham	Rang and asked if a representative would be available on 19-20 February. She said that one would be available and I arranged to fax her the paperwork as soon as the dates were confirmed.
6/02/2008	NIAC	Chris Illert	Tried to call to ask about doing a survey on 18-19 February but phone was engaged.
6/02/2008	NIAC	Chris Illert	Tried to email about the availability of a representative on 19-20 February, but received email notified that the message was not delivered.
6/02/2008	TLALC	Donna Whillock	Rang to say that 19-20 February suited all the groups that I talked to, and she gave me Glenda's mobile number as I hadn't been able to reach her on the landline.
6/02/2008	CBNTCAC	Glenda Chalker	Rang and asked if a representative would be available on 19-20 February. She said that she was only available on the 19th, but that she might be able to organise someone else for the 20th.
6/02/2008	NIAC	Chris Illert	Tried to email about the availability of a representative on 19-20 February, but received email notified that the message was not delivered.
7/02/2008	NIAC	Chris Illert	Tried to call twice but no answer.
7/02/2008	NIAC	Chris Illert	Rang and asked if a representative would be available on 19-20 February. He said that would be fine.
7/02/2008	TLALC	Donna Whillock	Emailed details of survey and proposed methodology.
7/02/2008	CBNTCAC	Glenda Chalker	Faxed details of survey and proposed methodology.
7/02/2008	DCAC	Leanne Watson	Faxed details of survey and proposed methodology.
7/02/2008	DACHA	Celestine Everingham	Faxed details of survey and proposed methodology.
7/02/2008	DTAC	Gordon Workman	Emailed details of survey and proposed methodology.
11/02/2008	TLALC	Donna Whillock	Call to advise fieldwork date would need to change, said we'd contact them ASAP about a new date.
11/02/2008	CBNTCAC	Glenda Chalker	Call to advise fieldwork date would need to change, said we'd contact them ASAP about a new date.
11/02/2008	DCAC	Leanne Watson	Call to advise fieldwork date would need to change, said we'd contact them ASAP about a new date.
11/02/2008	DACHA	Celestine Everingham	Call to advise fieldwork date would need to change, said we'd contact them ASAP about a new date.
11/02/2008	DTAC	Gordon Workman	Call to advise fieldwork date would need to change, said we'd contact them ASAP about a new date.
11/02/2008	NIAC	Chris Illert	Email to advise fieldwork date would need to change, said we'd contact them ASAP about a new date.
18/02/2008	TLALC	Donna Whillock	Call to ascertain availability for survey next week. Donna can't do Friday but can do Wednesday.
18/02/2008	CBNTCAC	Glenda Chalker	Call to ascertain availability for survey next week. Glenda can't do Wednesday but can do Friday.
18/02/2008	DCAC	Leanne Watson	Call to ascertain availability for survey next week. Left message.
18/02/2008	DACHA	Celestine Everingham	Call to ascertain availability for survey next week. DACHA can do any day but prefers not Friday.
18/02/2008	DTAC	Gordon	Call to ascertain availability for survey next week. Gordon can do

		Workman	any day but prefers not Friday.
18/02/2008	NIAC	Chris Illert	Email to ascertain availability for survey next week.
18/02/2008	DCAC	Leanne Watson	Call to ascertain availability for survey next week. Leanne said she could do any day.
18/02/2008	NIAC	Chris Illert	Call to ascertain availability for survey next week. Chris said they could do any day.
18/02/2008	CBNTCAC	Glenda Chalker	Call to ascertain any other available dates for survey next week. Glenda and Donna can both do Monday.
18/02/2008	NIAC	Chris Illert	Email from Chris to say that they need 3 representatives on site.
19/02/2008	TLALC	Donna Whillock	Call to ascertain availability for survey on Monday and Thursday next week. Donna said she'd be available.
19/02/2008	CBNTCAC	Glenda Chalker	Call to ascertain availability for survey on Monday and Thursday next week. Glenda said she'd be available.
19/02/2008	DCAC	Leanne Watson	Call to ascertain availability for survey on Monday and Thursday next week. Left message. Called again several times.
19/02/2008	DACHA	Celestine Everingham	Call to ascertain availability for survey on Monday and Thursday next week. Celestine said someone would be available.
19/02/2008	DTAC	Gordon Workman	Call to ascertain availability for survey on Monday and Thursday next week. Gordon said he'd be available.
19/02/2008	NIAC	Chris Illert	Emailed details of survey and proposed methodology.
19/02/2008	DTAC	Gordon Workman	Emailed details of survey and proposed methodology.
19/02/2008	TLALC	Donna Whillock	Emailed details of survey and proposed methodology.
19/02/2008	CBNTCAC	Glenda Chalker	Faxed details of survey and proposed methodology.
19/02/2008	DCAC	Leanne Watson	Faxed details of survey and proposed methodology.
19/02/2008	DACHA	Celestine Everingham	Faxed details of survey and proposed methodology.
21/02/2008	TLALC	Donna Whillock	Call to cancel survey as access has been unable to be arranged; organised to contact them as soon as firm dates were known.
21/02/2008	CBNTCAC	Glenda Chalker	Call to cancel survey as access has been unable to be arranged; organised to contact them as soon as firm dates were known.
21/02/2008	DCAC	Leanne Watson	Call to cancel survey as access has been unable to be arranged; organised to contact them as soon as firm dates were known.
21/02/2008	DACHA	Celestine Everingham	Call to cancel survey as access has been unable to be arranged; organised to contact them as soon as firm dates were known.
21/02/2008	DTAC	Gordon Workman	Call to cancel survey as access has been unable to be arranged; organised to contact them as soon as firm dates were known.
21/02/2008	NIAC	Chris Illert	Call to cancel survey as access has been unable to be arranged; organised to contact them as soon as firm dates were known.
25/02/2008	TLALC	Donna Whillock	Email to ascertain availability for survey on Thursday and Friday next week.
25/02/2008	DTAC	Gordon Workman	Email to ascertain availability for survey on Thursday and Friday next week.
26/02/2008	CBNTCAC	Glenda Chalker	Call to ascertain availability for survey on Thursday and Friday next week. Glenda said she'd be available.
26/02/2008	DACHA	Celestine Everingham	Call to ascertain availability for survey on Thursday and Friday next week. Celestine said Gordon would be available and asked me to confirm the dates with her ASAP.
26/02/2008	NIAC	Chris Illert	Call to ascertain availability for survey on Thursday and Friday next week. The group representatives are available.
26/02/2008	DCAC	Leanne Watson	Call to ascertain availability for survey on Thursday and Friday next week. Leanne said she'd be available.
26/02/2008	DACHA	Celestine Everingham	Call to confirm the survey dates.
26/02/2008	CBNTCAC	Glenda Chalker	Call to confirm the survey dates. Glenda wanted to be sure this wouldn't be cancelled and said they would have to charge for the days if so, because they couldn't schedule other work when these dates had been booked.
26/02/2008	TLALC	Donna Whillock	Emailed details of survey and proposed methodology.
26/02/2008	DTAC	Gordon Workman	Emailed details of survey and proposed methodology.
26/02/2008	DCAC	Leanne Watson	Emailed details of survey and proposed methodology.
26/02/2008	NIAC	Chris Illert	Faxed details of survey and proposed methodology.
26/02/2008	DACHA	Celestine Everingham	Faxed details of survey and proposed methodology.
26/02/2008	CBNTCAC	Glenda Chalker	Faxed details of survey and proposed methodology.

25/03/2008	CBNTCAC	Glenda Chalker	Call to ascertain availability for survey on 10-11 April. Glenda said she wasn't available on 10th but would be on 7th and could send someone on 8th.
25/03/2008	TLALC	Donna Whillock	Tried to call several times to ascertain availability for survey on 7 & 11 April.
25/03/2008	DACHA	Celestine Everingham	Call to ascertain availability for survey on 7 & 11 April. Celestine said she'd be able to send someone on those days and also has availability in the rest of that week because of some cancelled work.
25/03/2008	DCAC	Leanne Watson	Tried to call to ascertain availability for survey on 7 & 11 April. Left a message.
25/03/2008	DTAC	Gordon Workman	Called and Gordon said that he no longer works for DTAC. He says that there is a new committee and I would need to contact Sandra Lee about a site officer. He said that he would be starting a new Aboriginal heritage group called Darug Land Observation.
25/03/2008	DTAC	Sandra Lee	Call to ascertain availability of a site officer for survey on 7 & 11 April. Sandra said she would get back to me and asked if I could send her an email with details.
25/03/2008	DTAC	Sandra Lee	Email with details of project, asking about availability for survey on 7 & 11 April.
25/03/2008	NIAC	Chris Illert	Call to ascertain availability for survey on 7 & 11 April. Chris said that should be fine.
25/03/2008	TLALC	Donna Whillock	Donna called back and said she would only be available on 8 April in that week, but will try to find someone to do 11 April.
25/03/2008	CBNTCAC	Glenda Chalker	Called to see if she would be available on do 8 & 11 April. She said that should be fine.
25/03/2008	DACHA	Celestine Everingham	Call to ascertain availability for survey on 8 & 11 April. Celestine said that would be fine.
25/03/2008	DTAC	Sandra Lee	Call to ascertain availability for survey on 8 & 11 April. Sandra said that should be fine.
25/03/2008	NIAC	Daniela Reverberi	Call to ascertain availability for survey on 8 & 11 April. Daniela said that should be fine.
25/03/2008	DCAC	Leanne Watson	Called to ascertain availability for survey on 8 & 11 April. Leanne said that would be fine.
25/03/2008	DTAC	Sandra Lee	Email with new contact details of group.
25/03/2008	DTAC	Sandra Lee	Email to confirm receipt of new details and asking for advice ASAP on whether they had a representative available on 8 & 11 April.
25/03/2008	DTAC	Sandra Lee	Email to confirm that they have someone available for survey on 8 & 11 April.
25/03/2008	DTAC	Sandra Lee	Email stressing that DTAC is run by the Darug community and that some other companies using the Darug name are not run by Darug people.
7/04/2008	DACHA	Celestine Everingham	Phone call from DACHA to confirm survey tomorrow would go ahead.
9/04/2008	DTAC	Sandra Lee	Phone call from DTAC to say that their site officer was in hospital so could not attend the fieldwork on Tuesday, and that they would try to find another person to attend on Friday.
2/07/2008	TLALC	Donna Whillock	Call to ascertain availability for survey on 28 July. Donna said that would be fine. Will pass on details to Glenda from CBNTCAC who was with her at time of call.
2/07/2008	DACHA	Celestine Everingham	Call to ascertain availability for survey on 28 July. Celestine said that would be fine.
2/07/2008	DTAC	Sandra Lee	Call to ascertain availability for survey on 28 July. Sandra said that would be fine.
2/07/2008	DCAC	Leanne Watson	Tried to call to ascertain availability for survey on 28 July. Left a message.
2/07/2008	NIAC	Chris Illert	Call to ascertain availability for survey on 28 July. Chris said that would be fine.
2/07/2008	DCAC	Leanne Watson	Leanne called me back to confirm availability for survey 28 July.
2/07/2008	TLALC	Donna Whillock	Emailed details of survey and proposed methodology.
2/07/2008	DCAC	Leanne Watson	Emailed details of survey and proposed methodology.
2/07/2008	DTAC	Sandra Lee	Emailed details of survey and proposed methodology.
2/07/2008	NIAC	Chris Illert	Emailed details of survey and proposed methodology.
2/07/2008	DACHA	Celestine Everingham	Faxed details of survey and proposed methodology.
2/07/2008	CBNTCAC	Glenda Chalker	Faxed details of survey and proposed methodology.
2/07/2008	DTAC	Sandra Lee	Email to confirm receipt of details and availability on 28 July.
16/07/2008	TLALC	Donna Whillock	Call to ascertain availability for survey on 29 July. Donna said that should be fine, will contact AMBS if there any problems with date.

16/07/2008	CBNTCAC	Glenda Chalker	Call to ascertain availability for survey on 29 July. Glenda said someone should be available.
16/07/2008	DACHA	Celestine Everingham	Call to ascertain availability for survey on 29 July. Celestine said that should be fine, will contact AMBS if there any problems with date.
16/07/2008	DTAC	Sandra Lee	Call to ascertain availability for survey on 29 July. Left message, Sandra will call back today or tomorrow.
16/07/2008	DCAC	Leanne Watson	Call to ascertain availability for survey on 29 July. Leanne said that should be fine.
16/07/2008	NIAC	Chris Illert	Call to ascertain availability for survey on 29 July. Chris said that should be fine.
16/07/2008	DACHA	Celestine Everingham	Faxed proposed methodology and details of survey with additional day of 29 July.
16/07/2008	CBNTCAC	Glenda Chalker	Faxed proposed methodology and details of survey with additional day of 29 July.
16/07/2008	TLALC	Donna Whillock	Emailed proposed methodology and details of survey with additional day of 29 July.
16/07/2008	DCAC	Leanne Watson	Emailed proposed methodology and details of survey with additional day of 29 July.
16/07/2008	NIAC	Chris Illert	Emailed proposed methodology and details of survey with additional day of 29 July.
16/07/2008	DTAC	Sandra Lee	Sandra returned call, said additional day will be fine.
16/07/2008	DTAC	Sandra Lee	Emailed proposed methodology and details of survey with additional day of 29 July.
15/10/2008	TLALC	Donna Whillock	Posted a copy of the draft report, requesting feedback by 30/10/08.
15/10/2008	CBNTCAC	Glenda Chalker	Posted a copy of the draft report, requesting feedback by 30/10/08.
15/10/2008	DACHA	Celestine Everingham	Posted a copy of the draft report, requesting feedback by 30/10/08.
15/10/2008	DTAC	Sandra Lee	Posted a copy of the draft report, requesting feedback by 30/10/08.
15/10/2008	DCAC	Leanne Watson	Posted a copy of the draft report, requesting feedback by 30/10/08.
15/10/2008	NIAC	Chris Illert	Posted a copy of the draft report, requesting feedback by 30/10/08.
29/10/2008	CBNTCAC	Glenda Chalker	Called to ask if she had received the draft report, and whether she would be able to provide feedback. Glenda had been out at meetings all week and said that she wouldn't be able to provide feedback by the due date, but would send something through afterwards.
29/10/2008	TLALC	Donna Whillock	Called to ask if she had received the draft report, and whether she would be able to provide feedback. Donna had been out in the field but said that the LALC would drop the reports at her house, so she would try to provide feedback by the due date.
29/10/2008	DACHA	Celestine Everingham	Called to ask if she had received the draft report, and whether she would be able to provide feedback. Celestine said that she would try to provide feedback by the due date.
29/10/2008	DCAC	Leanne Watson	Tried to ring but there was no answer. Sent an email asking if the draft report had been received, and whether she would be able to provide feedback.
29/10/2008	DTAC	Sandra Lee	Called to ask if the draft report had been received, and whether she would be able to provide feedback. She said that they had not received the reports, so I agreed to email them through, and they said that they would look at them straight away and send through feedback.
29/10/2008	DTAC	Sandra Lee	Emailed the draft report to them.
29/10/2008	DTAC	Sandra Lee	Email supporting the recommendations of the report.
30/10/2008	DACHA	Celestine Everingham	Letter supporting the recommendations of the report, requesting to be involved in future fieldwork, and requesting to be consulted about the development of offsets.
4/11/2008	DCAC	Leanne Watson	Letter supporting the recommendations of the report, requesting to be involved in future fieldwork, and requesting that signage about the history of the traditional owners be erected at the stations along the SWRL.
4/11/2008	CBNTCAC	Glenda Chalker	Letter supporting some of the recommendations of the report. They consider that sites MFH#2 and SWRL Site 7 were unlikely to be impacted by the proposal, and that they should be protected during construction. They also did not consider that it could appropriately be said whether the conservation areas in the current Masterplan were adequate offsets for the sites that are to be impacted by the project. They did not agree that a Section 90 should be sought for sites outside the Part 3A area, but said that these sites should be avoided (although SWRL Site 4 may be negotiable). They agreed to the test excavations, but not

			necessarily to the methodology proposed in the report.
23/02/2010	Dulcine	Tharawal LALC	said Donna may be available for fieldwork Friday, but that Tharawal had a new booking form she would email through to me, for me to email back and confirm availability
23/02/2010	Glenda Chalker	CBNTCAC	no answer, number switched to fax.
23/02/2010	Glenda Chalker	CBNTCAC	no answer, left a return number
23/02/2010	Celestine Everingham	DACHA	no answer, left a message briefly describing survey, & asking to be called back
23/02/2010	Leanne Watson	DCAC	no answer, left a message briefly describing survey, & asking to be called back
23/02/2010	Sandra Lee	DTAC	contact was unavailable, left a message, and was told that the relevant contact would call me back
23/02/2010	Sandra Lee	DTAC	discussed field survey, & was told that a field officer should be available for Friday, and to email details through when the other groups had confirmed.
24/02/2010	Leanne Watson	DCAC	leanne returned my call, and said she was available for fieldwork Friday. Requested I send through details by email.
24/02/2010	Celestine Everingham	DACHA	discussed fieldwork, Celestine requested that details be faxed through.
25/02/2010	Sandra Lee	DTAC	cancelled Friday fieldwork, will confirm as soon as I know access availability
26/02/2010	Celestine Everingham	DACHA	no answer, phone engaged
27/02/2010	Dulcine Blair	Tharawal LALC	cancelled Friday fieldwork, requested the booking form be sent through again
26/02/2010	Celestine Everingham	DACHA	cancelled Friday fieldwork
2/03/2010	Dulcine Blair	Tharawal LALC	Called to arrange field survey. Left message on answering machine requesting someone phone back.
2/03/2010	Glenda Chalker	CBNTCAC	Called to arrange field survey. No answer.
2/03/2010	Celestine Everingham	DACHA	Called to arrange field survey. Thursday preferred. Arranged for AMBS to phone back to confirm day.
2/03/2010	Leanne Watson	DCAC	Called to arrange field survey. Leanne is available Thursday. Arranged for AMBS to email confirmation of day and survey details.
2/03/2010	Sandra Lee	DTAC	Called to arrange field survey. Sandra is available Thursday. Arranged for AMBS to phone back to confirm day.
2/03/2010	Daniela Reverberi	NIAC	Called to arrange field survey. Phone engaged.
2/03/2010	Glenda Chalker	CBNTCAC	Called to arrange field survey. Glenda is not available, but will check to see if someone can attend. The short notice will make it difficult to arrange.
2/03/2010	Glenda Chalker	CBNTCAC	Returned call after phone dropped out. Glenda couldn't get in contact with rep. It might be possible someone can attend but it is short notice. Will confirm if someone can come, but may not get back to AMBS until tomorrow. Someone would be available next week.
2/03/2010	Daniela Reverberi	NIAC	Called to arrange field survey. Phone engaged.
2/03/2010	Celestine Everingham	DACHA	Called to confirm date of survey. Arranged to return call this afternoon to confirm.
2/03/2010	Daniela Reverberi	NIAC	Called to arrange field survey. Phone engaged (x2).
2/03/2010	Mark	Tharawal LALC	Called to arrange field survey. Everyone is currently in a meeting, left message for someone to call AMBS back.
2/03/2010	Daniela Reverberi	NIAC	Called to arrange field survey. Phone engaged.
2/03/2010	Daniela Reverberi	NIAC	Called to arrange field survey. Phone engaged.
2/03/2010	Glenda Chalker	CBNTCAC	Called to arrange field survey. Tentatively arranged for Tuesday. Arranged to confirm details in writing.
2/03/2010	Celestine Everingham	DACHA	Called to arrange field survey. No answer (x2)
2/03/2010	Celestine Everingham	DACHA	Called to arrange field survey. No answer. Left AMBS phone number on missed call service.
2/03/2010	Leanne Watson	DCAC	Called to arrange field survey. Leanne is available next Tuesday. Have arranged to confirm details by email.
2/03/2010	Sandra Lee	DTAC	Called to arrange field survey. Sandra is available Tuesday. Have arranged to confirm details by email.
2/03/2010	Daniela Reverberi	NIAC	Called to arrange field survey. Phone engaged.
2/03/2010	Celestine Everingham	DACHA	Called to arrange field survey. Celestine is available Tuesday. Have arranged to confirm details by fax.
3/03/2010	Daniela Reverberi	NIAC	Called to arrange field survey. Phone engaged.
3/03/2010	Daniela Reverberi	NIAC	Called to arrange field survey. Phone engaged.
3/03/2010	Daniela Reverberi	NIAC	Sent email briefly describing survey and asking if a NIAC rep would be available for Tuesday.
3/03/2010	Daniela Reverberi	NIAC	Sent email clarifying the proposed survey date.
3/03/2010	Dulcine Blair	Tharawal	Called to arrange field work. Donna may be available Tuesday.

		LALC	Dulcine will send new field work booking form.
3/03/2010	Dulcine Blair	Tharawal LALC	Sent email with new field work request form attached.
4/03/2010			Representatives would be available for Tuesday from three NIAC member groups: Wadi Wadi Coomaditchie Aboriginal Corporation, Botany Bay La Perouse Aboriginal Corporation, and the Woronora Plateau Gundungara Elders Council. Daniela requested clarification if one or three of our member groups is invited.
	Daniela Reverberi	NIAC	
5/03/2010	Dulcine Blair	Tharawal LALC	emailed fieldwork details and booking form
5/03/2010	Daniela Reverberi	NIAC	confirming fieldwork booking, and passing on details
5/03/2010	Celestine Everingham	DACHA	confirming fieldwork booking, and passing on details
5/03/2010	Glenda Chalker	CBNTCAC	confirming fieldwork booking, and passing on details
5/03/2010	Leanne Watson	DCAC	confirming fieldwork booking, and passing on details
5/03/2010	Sandra Lee	DTAC	confirming fieldwork booking, and passing on details
5/03/2010	Dulcine Blair	Tharawal LALC	acknowledgement of receipt of fieldwork booking details, informing AMBS that their field officer is being contacted.
6/03/2010	Dulcine Blair	Tharawal LALC	informing us that insurance certificates would be forwarded on Monday.
7/03/2010	Dulcine Blair	Tharawal LALC	acknowledgement of receipt of emails
31/03/2010	Glenda Chalker	CBNTCAC	Glenda is available Thursday and Friday next week.
31/03/2010	Celestine Everingham	DACHA	Called to arrange field survey. No answer. Left message.
31/03/2010	Celestine Everingham	DACHA	Called to arrange field survey. No answer. Left AMBS phone number on missed call service.
31/03/2010	Leanne Watson	DCAC	Called to arrange field survey. No answer.
31/03/2010	Leanne Watson	DCAC	Called to arrange field survey. No answer. Left message.
31/03/2010	Dulcine Blair	Tharawal LALC	Called to arrange field work. Donna may be available Thursday or Friday next week. Dulcine will check with her, and probably get back to me tomorrow morning.
31/03/2010	Sandra Lee	DTAC	They should have someone available next week. She gave me John Riley's numbers as he would be organising fieldwork from now on. Emails are still to go to the same address though.
31/03/2010	Daniela Reverberi	NIAC	Called to arrange field survey. Phone engaged.
31/03/2010	Dulcine Blair	Tharawal LALC	Emailed field work form.
31/03/2010	Leanne Watson	DCAC	Called to say she is only free Wednesday 7 April.
31/03/2010	Celestine Everingham	DACHA	Left message asking if Wednesday 7 April was ok for them for fieldwork.
31/03/2010	Daniela Reverberi	NIAC	Called to arrange field survey. Phone engaged.
31/03/2010	Glenda Chalker	CBNTCAC	Tried to call to see if she's free on Wednesday. No answer.
31/03/2010	Dulcine Blair	Tharawal LALC	Asked if Donna would be free on Wednesday 7 April.
31/03/2010	Glenda Chalker	CBNTCAC	Draft report sent, requesting feedback by 14/04/10
31/03/2010	Celestine Everingham	DACHA	Draft report sent, requesting feedback by 14/04/10
31/03/2010	Leanne Watson	DCAC	Draft report sent, requesting feedback by 14/04/10
31/03/2010	Donna Whillock	Tharawal LALC	Draft report sent, requesting feedback by 14/04/10
31/03/2010	Sandra Lee	DTAC	Draft report sent, requesting feedback by 14/04/10
31/03/2010	Chris Illert	NIAC	Draft report sent, requesting feedback by 14/04/10
31/03/2010	Glenda Chalker	CBNTCAC	Called to see if she was available on Wednesday. She'd rather not, but she can if necessary.
31/03/2010	Celestine Everingham	DACHA	Called to arrange field survey. No answer.
31/03/2010	Celestine Everingham	DACHA	Celestine is available on Wednesday or Thursday next week.
31/03/2010	Yvonne McGregor	Tharawal LALC	Rang to see if Donna might be free on Wednesday 7 April. Dulcine leaves the offices at 3pm and she does all the booking, so Yvonne couldn't tell me.
1/04/2010	Dulcine Blair	Tharawal LALC	Explained about the change of date I was requesting availability for. Dulcine said she would ring Donna and check, and get back to me.
1/04/2010	John Riley	DTAC	Asked if he'd be available on Wednesday 7 April. He said that should be fine.
1/04/2010	Daniela Reverberi	NIAC	Called to arrange field survey. Phone engaged.
1/04/2010	Dulcine Blair	Tharawal LALC	Said that Donna is only available on Friday the 9th, and the following week on the 14th and 15th,
1/04/2010	Dulcine Blair	Tharawal LALC	Said that the client is trying to arrange access on the 9th, and that I'd get back to her to confirm if this date was feasible.

1/04/2010	Leanne Watson	DCAC	Locked in the 7th. Arranged to send an email with meeting time/place etc.
1/04/2010	Celestine Everingham	DACHA	Called to arrange field survey. No answer.
1/04/2010	Celestine Everingham	DACHA	Called to arrange field survey. Left message on answering machine asking her to book in the 7th.
1/04/2010	Dulcine Blair	Tharawal LALC	Arranged to book in the 9th for Donna.
1/04/2010	Glenda Chalker	CBNTCAC	Glenda wasn't at home so I arranged to call her mobile.
1/04/2010	Glenda Chalker	CBNTCAC	Glenda is available on Friday the 9th so we booked in for that date.
1/04/2010	Celestine Everingham	DACHA	Called to arrange field survey. No answer.
1/04/2010	Celestine Everingham	DACHA	Called to arrange field survey. No answer.
1/04/2010	Dulcine Blair	Tharawal LALC	confirming fieldwork booking, and passing on details - field work request form
1/04/2010	Leanne Watson	DCAC	confirming fieldwork booking, and passing on details
1/04/2010	Sandra Lee	DTAC	confirming fieldwork booking, and passing on details
1/04/2010	Daniela Reverberi	NIAC	confirming fieldwork booking, and passing on details
1/04/2010	Glenda Chalker	CBNTCAC	confirming fieldwork booking, and passing on details
1/04/2010	Celestine Everingham	DACHA	confirming fieldwork booking, and passing on details
1/04/2010	Celestine Everingham	DACHA	Called to check whether fax had been received, and Wednesday was still ok. No answer.
1/04/2010	Celestine Everingham	DACHA	Called to check whether fax had been received, and Wednesday was still ok. No answer.
1/04/2010	Celestine Everingham	DACHA	Called to check whether fax had been received, and Wednesday was still ok. No answer.
1/04/2010	Celestine Everingham	DACHA	Called to check whether fax had been received, and Wednesday was still ok. No answer.
1/04/2010	Daniela Reverberi	NIAC	Email to confirm that they would be able to attend on Wednesday.
6/04/2010	John Riley	DTAC	John called to confirm whether the survey would be on, and when we would call if it was cancelled due to rain. I said I was still waiting on confirmation but that the meeting time might be changed to 10:30, as Chris needed to drop his kids off at school that morning. John said that Dennis Harding would be the one to attend, and gave me his contact details so that I could call if the survey was cancelled.
6/04/2010	Dennis Hardy	DTAC	Called to say that the survey would go ahead at 9:30 instead of 10:30, providing that they can arrange access. I said I'd call him by the end of the day if the survey was to be cancelled.
6/04/2010	Leanne Watson	DCAC	Email to ask if the survey was on tomorrow, and asking for meeting time and place.
6/04/2010	Leanne Watson	DCAC	Sent email with meeting time and place, and said I was still awaiting confirmation, but would call by the end of the day if it was cancelled.
7/04/2010	Leanne Watson	DCAC	Asked if she had anyone available on Friday and she said she'd check, because she might. Also asked if she could send her new insurance certificate through.
7/04/2010	Glenda Chalker	CBNTCAC	Asked if she could send her new insurance certificates through.
7/04/2010	Dulcine Blair	Tharawal LALC	Tried to call; no answer.
7/04/2010	Dulcine Blair	Tharawal LALC	Asked if she could send their insurance certificates through. She said she would email them tomorrow morning before 10am.
7/04/2010	Daniela Reverberi	NIAC	Asked if she could send through the insurance certificates.
8/04/2010	Celestine Everingham	DACHA	Called to see if anyone would be available on Friday. She said she'd ask Gordon, and would call me back if he wasn't available.
8/04/2010	Daniela Reverberi	NIAC	Email with insurance certificates, and follow-up phone to make sure they'd been received.
8/04/2010	Dulcine Blair	Tharawal LALC	Asked if she could send through the insurance certificates.
8/04/2010	Glenda Chalker	CBNTCAC	Asked if she could send through the insurance certificates. Glenda said she is looking through the draft SWRL report now, but it's difficult to comment and the maps are quite small, so she thought a meeting would be good to provide comment.
8/04/2010	Glenda Chalker	CBNTCAC	Updated insurance certificates.
8/04/2010	Robyn	Tharawal LALC	Asked if she could send through the insurance certificates. She said she thought Dulcine had tried to fax them through this morning, but there was something wrong with their fax machine. She said she'd get them scanned and email them through today.
8/04/2010	Leanne Watson	DCAC	Called to confirm fieldwork tomorrow. She said she wasn't sure she'd be able to get someone, but that if not, they would just comment on the report. She said she organised the renewal of the insurance and would fax it through today.

8/04/2010	Celestine Everingham	DACHA	Called to confirm fieldwork tomorrow. Left message.
8/04/2010	Celestine Everingham	DACHA	Called to confirm fieldwork tomorrow. No answer.
8/04/2010	Daniela Reverberi	NIAC	Called to confirm fieldwork tomorrow. Phone engaged.
8/04/2010	Daniela Reverberi	NIAC	Email to confirm fieldwork tomorrow.
8/04/2010	Dennis Hardy	DTAC	Called to confirm fieldwork tomorrow.
8/04/2010	Glenda Chalker	CBNTCAC	Called to confirm fieldwork tomorrow, and said that I'd received her insurance certificates.
8/04/2010	Dulcine Blair	Tharawal LALC	Called to confirm fieldwork tomorrow, and asked if they could send through the insurance certificates before COB, as the client needed them prior to the survey.
8/04/2010	Leanne Watson	DCAC	Update workers comp insurance certificate, expiring April 2011.
8/04/2010	Yvonne McGregor	Tharawal LALC	Updated insurance certificates.
14/04/2010	Glenda Chalker	CBNTCAC	Tried to call about feedback; no answer.
14/04/2010	Glenda Chalker	CBNTCAC	Asked whether she thought she'd be able to provide any feedback by today. She said that she's read the report, but it's such a large area and it's difficult to remember all of the places we saw in the field 2 years ago, and to determine whether the recommendations would be suitable looking at the whole project. She said she'd try and get me something soon, but that it might be useful to have a meeting to discuss it all, and have some large maps there to enable better identification of where everything is. She said Donna is with her out in the field today, and she hasn't even received the report from the LALC office, so she won't be able to provide any comment yet.
14/04/2010	Leanne Watson	DCAC	Tried to call about feedback; no answer.
14/04/2010	Leanne Watson	DCAC	Tried to call about feedback; left message.
14/04/2010	Celestine Everingham	DACHA	Asked whether she thought she'd be able to provide any feedback by today. She said that she can look at it in about an hour and will try and fax feedback through today, but if she doesn't have a chance to write something, then she'll give me a call about it.
14/04/2010	Sandra Lee	DTAC	Asked whether she thought she'd be able to provide any feedback by today. She said that she thinks she's received it, but she's in bed sick at the moment. She said she'll be seeing John Riley tonight so she'll ask him to give me a call tomorrow.
14/04/2010	Daniela Reverberi	NIAC	Tried to call about feedback; phone engaged.
14/04/2010	Daniela Reverberi	NIAC	Asked whether they'd received the report, and whether they thought they'd be able to provide any feedback soon.
14/04/2010	Celestine Everingham	DACHA	Celestine said that she'd read the report and agreed with the recommendations, and asked me if I wanted her to write it down and fax it through, which I said I would appreciate.
14/04/2010	Celestine Everingham	DACHA	Feedback agreeing with the recommendations, and requesting to be involved in all future fieldwork activities for the project.
14/04/2010	Daniela Reverberi	NIAC	Feedback agreeing with the recommendations.
15/04/2010	Donna Whillock	Tharawal LALC	Feedback agreeing with the recommendations.
17/04/2010	John Riley	DTAC	Feedback agreeing with the recommendations, and requesting to be involved in all future fieldwork activities for the project.

Appendix C

Aboriginal Community Feedback

The views presented in the following letters are those of the relevant Aboriginal groups, are presented without editing or comment, and do not necessarily reflect the views of the Australian Museum Business Services (AMBS). AMBS does not guarantee the accuracy of any information contained in the following letter / report, and does not accept legal responsibility for its contents.



Darug Tribal Aboriginal Corporation
PO Box 441 Blacktown NSW 2148
PH: (02) 9622 4081
Mobile 0431 343 021
Fax: (02) 9622 4081
Email: darug_tribal@live.com.au
ABN: 77 184 151 969

Wednesday, October 29, 2008,

Jenna Weston

Australian Museum Business Services

RE: Stage B2 South West Rail Link Aboriginal Heritage Assessment

DTAC have read the draft report and are happy to support the recommendations in this report and look forward to participating with you if needed for the rest of this project.

We also believe the report is very well presented.

Hugs & Smiles

Sandra Lee

Secretary DTAC

Darug Aboriginal Cultural Heritage Assessments

ABN 51734106483

Gordon Morton & Associates
28 Calala St., Mt. Druitt, 2770
Ph. 9625 0005
Mob: 0422 865 831
Fax: 45 677 421

Celestine Everingham
90 Hermitage Rd., Kurrajong Hills, 2758
Ph/Fax: 45677 421
Mob: 0432 528 896

30. 10. 08

Attention

Chais kangehnddehe
A. M. B.S.

re Stage B2 SW Rail Link Darug Aboriginal
Heritage Assessment

DACHA support your recommendations in
the above area and wish to participate in
all monitoring, salvage and archaeological
explorations that may arise at Memphis Creek
crossing, Long Creek (between Berramatta and
Maxwells Creek). We wish to be consulted as to
what areas are to be set aside as the offset
for the destruction of Darug sites by the
construction of the rail alignment.

Yours Sincerely,
G N Morton

Cultural Heritage – Building respect for the past and Conservation for the future

2008-11-04 03:33

0245775098 >> 02 9320 6428

P 1/1

**DARUG CUSTODIAN ABORIGINAL
CORPORATION**

PO BOX 81 WINDSOR 2756
PH: 45775181 MOB: 0415770163
ABN: 81935722930
mulgokiwij@nol.com

4th November 2008.

Attention: Jenna Weston.

SUBJECT: Stage B2 South West Rail Link - Aboriginal Heritage Assessment.

Dear Jenna,

The Darug Custodian Aboriginal Corporation have received and read the Draft report for the Stage B2 South West Rail Link - Aboriginal Cultural Heritage assessment.

Our group support the recommendations in this draft report.

This area has significance to our people, there are many sites in within the footprint of this proposed development, we need to protect and preserve as much of our Cultural Heritage as possible. In the areas that are to be developed we would want equal participation in field work with only traditional owner community groups and the LALC, the traditional owners are the heritage specialists of there areas.

The consultation with our group for this project has been very good, we would like to see only people from country participating in this process, this is part of our culture, the DECC guidelines do not state that all stakeholders participate in fieldwork.

We would recommend that signage on the history of the traditional owners be erected within all stations as an outcome of this project.

We look forward to working with you please do not hesitate to contact us with any enquiries.

Regards



Leanne Watson
Director

Cubbitch Barta Native Title Claimants
Aboriginal Corporation,
55 Nightingale Road,
PHEASANTS NEST. N.S.W. 2574.
4th November, 2008.

AMBS,
6 College Street,
SYDNEY. N.S.W. 2010.

Dear Chris,

RE: SOUTH WEST RAIL LINK
ABORIGINAL HERITAGE ASSESSMENT.

Thank you for the opportunity of commenting on the above project, in which our organisation participated in the fieldwork. I have previously taken place in other surveys and excavations which have taken place in and around the Edmondson Park Precinct, over many years. The surveys were with Mary Dallas, AMBS, Austral Archaeology and the excavation with Navin Officer.

I am fully aware of the landscape, having visited the area many times, for different reasons over the years, and feel fully confident in my cultural assessment of the area. In regards to the recommendations made in the draft report, I would like to make the following comments:


1. Recommendations 1 to 3; are standard requirements in regards to Aboriginal Heritage, and I agree with them.
2. Recommendation 4; site MFH#2 is in relation to a site that was partly excavated, on the western side of the rail line, not in the area of the creek line. Since the excavation artefacts have been seen on the northern side of the creek area by myself, near the rail corridor. I believe that the creek line is more significant than indicated in the report. The creek line was to be avoided, for the proposal that was to take place, when the excavation was done. Site SWRL7, was found within the easement for the water canal, and I do not see how this could possibly be impacted, not only for the artefactual material that was located, but the heritage issues. The report does not say whether the rail line is going above the canal or under the canal.
3. Recommendation 5; I cannot see a reason to relocate SWRL7, that is within the canal easement. MFH#2, I believe can be avoided of any impact and that a barrier to protect the area could be put in place to avoid any secondary impact. There must be some restrictions as to how close the line can impact the creek line.
4. Recommendation 6 & 7 The sites that are listed here are clearly a landscape issue, and these sites, although identified in the report as separate sites, are part of a much bigger landscape picture. The maps indicate that most can possibly be avoided, except for SWRL4. I do not agree to a Section 90 for the whole number of the sites, but believe that possibly SWRL4 can be negotiated.

Page 2.

Recommendation 8 & 9 I agree with the possibility of test excavations taking place, but not necessarily to the methodology that has been mentioned in this report.

There appears to be two recommendations of 9: The recommendation 9 that is made on page 76, I do not believe it is culturally appropriate to make a statement that the lands that are to be retained in the Current Masterplan, are an appropriate offset for the destruction of adjacent Aboriginal Heritage, because these areas are usually set aside for other reasons, and not usually to conserve Aboriginal Heritage. I have not been privy to the Current Masterplan, and am not fully aware of the proposed areas, as they may be today.

Yours faithfully,



Glenda Chalker
Hon. Chairperson
Phone/Fax 02 46841129 0427218425

Darug Aboriginal Cultural Heritage Assessments

ABN 51734106483

Gordon Morton & Associates

Mob: 0422 865 831
Fax: 45 677 421

Celestine Everingham
90 Hermitage Rd., Kurrajong Hills, 2758
Ph/Fax: 45677 421
Mob: 0432 528 896

14. 4. 10

Attention

Jenna Weston

re South West Rail Link – Glenfield to
Leppington Rail Line – Draft Report
Darug Heritage Assessment.

DHCH have read your report on the
above Rail Link and we support your
recommendations and we look forward
to your methodology on the test excavation
on each side of Kemps Creek. DHCH wish to
participate in all field work that will
arise from the Rail Link activities.

Yours Sincerely,
C. Everingham

PURPOSE OF THIS FORM

This form is intended to make it easier for Aboriginal parties to provide comments and feedback on Aboriginal heritage reports. It is not obligatory to provide feedback in this way, however if you would like to use this form, please fill out, sign and return to AMBS by fax to (02) 9320 6428 or post to:

AMBS
 Attn Jenna Weston
 6 College Street Sydney NSW 2010

Alternatively, if you would like to provide feedback in another form such as by personal letter or email, please feel free to do so.

ABORIGINAL FEEDBACK

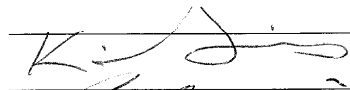
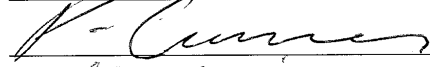

I, Daniela Reverberi (NIAC Technical Officer) (your name)

of N.I.A.C member groups (Aboriginal group name)

agree with the results and recommendations in the AMBS survey report (dated March 2010) for the Aboriginal heritage assessment of the South West Rail Link – Glenfield to Leppington Rail Line, which was surveyed on 6-7 March, 8 and 11 April, and 28-29 July 2008, and 9 March 2010 **and/or**

would like to make the following comments about the results, Aboriginal significance or recommendations outlined in the AMBS survey report (dated March 2010) for the Aboriginal heritage assessment of the South West Rail Link – Glenfield to Leppington Rail Line, which was surveyed on 6-7 March, 8 and 11 April, and 28-29 July 2008, and 9 March 2010:

Sorry for the delay. We have now had time
to review your report and recommendations.
We agree with the recommendations.

	<u>La Perouse</u>
	<u>Botany Bay Aboriginal Corporation</u>
	<u>Woronora Plateau Gundungara Elders</u>
	<u>Council</u>
	<u>Wadi Wadi Elder (Wadi Wadi</u>
	<u>Coomaditchie Aboriginal Corp)</u>

Signature Daniela Reverberi Date 15 April 2010

Position within Aboriginal group: NIAC Technical Officer



THARAWAL LOCAL ABORIGINAL LAND COUNCIL

Gibber Gonyah
50 Matthews Lane, Picton NSW 2571

12th April 2010

Jenna Weston
Australian Museum Business Services
6 College Street,
Sydney NSW 2010

RE: Report

Dear Jenna,

On Friday 9th April I attended a walk over survey of a two areas that have been included in the SWS railway proposal (Glenfield).

The first area was an extension of the area in the army camp ground. This area is and has been previously heavily disturbed. I have no problem with the front of this property being used but I feel the track at the back of the property may need additional subsurface testing.

The second portion of this survey was a property on Bringelly Road No.511. This area is proposed as a stabling facility. There was nothing found, however there was 0% visibility due to the fall of the land. Subsurface testing is recommended.

I would like to thank you for your invitation on this survey. I look forward to working with you again.

Yours in Indigenous Unity,

Donna Whillock
Cultural & Heritage Representative
Tharawal Local Aboriginal Land Council

PO Box 168
PICTON NSW 2571
Phone: 02 4681 0059 Fax: 02 4683 1375 ABN: 60 693 210 407
tharawa@bigpond.net.au

PURPOSE OF THIS FORM

This form is intended to make it easier for Aboriginal parties to provide comments and feedback on Aboriginal heritage reports. It is not obligatory to provide feedback in this way, however if you would like to use this form, please fill out, sign and return to AMBS by fax to (02) 9320 6428 or post to:

AMBS
Attn Jenna Weston
6 College Street Sydney NSW 2010

Alternatively, if you would like to provide feedback in another form such as by personal letter or email, please feel free to do so.

ABORIGINAL FEEDBACK

I, JOHN REILLY (your name)
of DARUG TRIBAL ABORIGINAL CORPORATION (D.T.A.C.) (Aboriginal group name)

agree with the results and recommendations in the AMBS survey report (dated March 2010) for the Aboriginal heritage assessment of the South West Rail Link – Glenfield to Leppington Rail Line, which was surveyed on 6-7 March, 8 and 11 April, and 28-29 July 2008, and 9 March 2010 and/or

would like to make the following comments about the results, Aboriginal significance or recommendations outlined in the AMBS survey report (dated March 2010) for the Aboriginal heritage assessment of the South West Rail Link – Glenfield to Leppington Rail Line, which was surveyed on 6-7 March, 8 and 11 April, and 28-29 July 2008, and 9 March 2010:

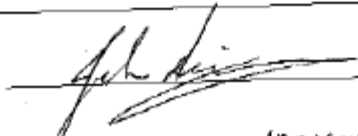
WE AGREE TO YOUR RECOMMENDATIONS AND METHODOLOGY.
PLEASE INVOLVE US WITH FUTURE SURVEY,
MONITORING, SAMPLE DIGGING, AND SIEVING WORK.

KIND REGARDS

JOHN REILLY

D.T.A.C.

Signature



Date 17-04-2010

Position within Aboriginal group: ABORIGINAL ARCHAEOLOGY ASSESSMENT OFFICER

Appendix D

New/Updated Site Cards

Updated details: DD1



Aboriginal Sites Register of NSW

NPWS, PO Box 1967, Hurstville NSW 2220
Standard Site Recording Form

New Recording Additional

information

SITE IDENTIFICATION				
Site name	DD1		NPWS Site Number	45-8-2455
Owner/manager				
Owner Address				
LOCATION				
Location	Lot 3 DP831152			
How to get to the site	Coming from Sydney, travel west on the Hume Highway, bear left at Campbelltown Road, turn right at Lawson Road, turn right onto an access road to the STP. About 300m along the road, a dirt track branches off to the right. The artefacts are located along this track.			
1:250,000 map name			NPWS map code	
AMG Zone	56	AMG Easting	302898	AMG Northing 6239142
Method for grid reference	Hand-held GPS	Map scale (if method = map)	1:25,000	Map name
NPWS District			NPWS Zone	Sydney Zone
Portion no.			Parish	
SITE DESCRIPTION				
Site type(s)	Stone artefact scatter		Site type code (NPWS use only)	
Description of site and contents CHECKLIST: eg. length, width, depth, height of site, shelter, deposit, structure, element eg. tree scar, grooves in rock. DEPOSIT: colour, texture, estimated depth, stratigraphy, contents-shell, bone, stone, charcoal, density & distribution of these, stone types, artefact types. ART: area of decorated surface, motifs, colours, wet/dry pigment, engraving technique, no. of figures, sizes, patination. BURIALS: number & condition of bone, position, age, sex, associated artefacts. TREES: number, alive, dead, likely age, scar shape, position, size, patterns, axe marks, regrowth. QUARRIES: rock type, debris, recognisable artefacts, percentage quarried	<p>This site is located c. 130m south of a second order tributary of Maxwells Creek and c. 230m south west of its confluence with another second order tributary, and c.130m north of Campbelltown Road, within Lot 3 DP831152. Dallas (1999:13) described the site as comprising two artefacts (a red silcrete flaked piece and a pink silcrete flake) located on a dirt road from the STP (although GIS plots the site in a vegetated area), and the site photographs appear to show the same dirt track on which the artefacts were recorded during the current site visit. Therefore, this site has been recorded as DD1.</p> <p>The site comprises five stone artefacts along a disused vehicle track, which branches off from the current track to the STP site, in the property adjacent to Ingleburn Village. The first artefact was found c.15m from the STP access road, and the fifth artefact was located c.55 east along the disused track (at point DD1 (01)). These flaked artefacts were manufactured from silcrete and mudstone. Approximately 85% of the site area was exposed, and ground surface visibility within the exposure was around 100%.</p>			
Version: June 1998		Data entered by:		Date entered:



Aboriginal Sites Register of NSW

NPWS, PO Box 1967, Hurstville NSW 2220
Standard Site Recording Form

SITE ENVIRONMENT					
Land form	Slope	Aspect		Slope	
Mark position of the site					
Local rock type		Land use/effect			
Distance from drinking water	130m	Source	Maxwells Creek tributary		
Resource zone (eg. estuarine, river, forest)		Vegetation			
Edible plants		Faunal resources (include shellfish)			
Other exploitable resources (eg. ochre)					
Are there other sites in the locality	Yes	Are they in the Sites Register	Yes	Other site types include	Stone artefact scatters, isolated finds
SITE MANAGEMENT					
Site condition	Disturbed				
Management recommendations	The site is not proposed to be impacted by the proposed South West Rail Link development, however it is recommended that its location be fenced off with high visibility, temporary fencing during the construction, in order to avoid any accidental impacts (eg. by vehicle access).				
Have artefacts been removed from site	No	When			
By whom		Deposited at			
Consent applied for	<input type="checkbox"/>	Consent issued	<input type="checkbox"/>		
Date of issue		Consent number			
SITE INSPECTION AND RECORDING					
Reason for investigation	Aboriginal heritage assessment for proposed South West Rail Link development				
Were local Aborigines contacted or present for the recording	<input type="checkbox"/> Not contacted <input checked="" type="checkbox"/> Contacted and present <input type="checkbox"/> Contacted but not present	Names and addresses	Donna Whillock Dharawal Local Aboriginal Land Council PO Box 20 Buxton NSW 2571 Glenda Chalker Cubbitch Barta Native Title Claimants Aboriginal Corporation 55 Nightingale Road Pheasants Nest NSW 2574 Gordon Morton Darug Aboriginal Cultural Heritage Assessments 28 Calala St Mt Druitt NSW 2770 Justine Coplin Darug Custodian Aboriginal Corporation PO Box 81		

Version: June 1998

Data entered by:

Date entered:



Aboriginal Sites Register of NSW

NPWS, PO Box 1967, Hurstville NSW 2220
Standard Site Recording Form

		Windsor NSW 2756	
		Shane Loch Darug Tribal Aboriginal Corporation PO Box 441 Blacktown NSW 2148	
		Yvonne Simms La Perouse Botany Bay Aboriginal Corporation 2/3 Birch Crescent East Corrimal NSW 2518	
		Allan Carriage Wadi Wadi Coomaditchie Aboriginal Corporation 2/3 Birch Crescent East Corrimal NSW 2518	
		Paul Cummins Woronora Plateau Gundungara Elders Council 2/3 Birch Crescent East Corrimal NSW 2518	
Is the site important to local Aborigines			
Verbal/written reference sources	AMBS (in prep) Stage B2 South West Rail Link Aboriginal Heritage Assessment. Report to Parsons Brinckerhoff Australia Pty Ltd. Dallas M (1999) Preliminary Archaeological Assessment of the Department of Defence land at Ingleburn, NSW. Consultancy report to Department of Defence.	ASR report number(s)	C- C-
Photographs taken	Yes	No of Photos attached	2
Site recorded by	Jenna Weston	Date of recording	8 April, 2008
Address/institution	Australian Museum Business Services 6 College St Sydney NSW 2010		

Version: June 1998

Data entered by:

Date entered:

Updated details: EPCS4



Aboriginal Sites Register of NSW

NPWS, PO Box 1967, Hurstville NSW 2220
Standard Site Recording Form

New Recording Additional

information

SITE IDENTIFICATION					
Site name	EPCS4			NPWS Site Number	
Owner/manager					
Owner Address					
LOCATION					
Location	Lot 1 DP831152 and Lot 2 DP807461				
How to get to the site	Coming from Sydney, travel west on the Hume Highway, bear left at Campbelltown Road, turn right at Lawson Road. Stop at the northernmost curve of Lawson Drive, walk through the broken fence onto the adjoining dirt track, and the site extends along this dirt track.				
1:250,000 map name				NPWS map code	
AMG Zone	56	AMG Easting	302178	AMG Northing	6239148
Method for grid reference	Hand-held GPS	Map scale (if method = map)	1:25,000	Map name	
NPWS District				NPWS Zone	Sydney Zone
Portion no.				Parish	
SITE DESCRIPTION					
Site type(s)	Stone artefact scatter			Site type code (NPWS use only)	
Description of site and contents CHECKLIST: eg. length, width, depth, height of site, shelter, deposit, structure, element eg. tree scar, grooves in rock. DEPOSIT: colour, texture, estimated depth, stratigraphy, contents-shell, bone, stone, charcoal, density & distribution of these, stone types, artefact types. ART: area of decorated surface, motifs, colours, wet/dry pigment, engraving technique, no. of figures, sizes, patination. BURIALS: number & condition of bone, position, age, sex, associated artefacts. TREES: number, alive, dead, likely age, scar shape, position, size, patterns, axe marks, regrowth. QUARRIES: rock type, debris, recognisable artefacts, percentage quarried	<p>This site extends for c. 200 m, the western end of which is located c. 300 m east of a first order tributary of Cabramatta Creek (within Lot 2 DP807461) and the eastern end of which is located c. 100 m west of a second order tributary of Cabramatta Creek (within Lot 1 DP831152). The Edmondson Park Station is proposed to be located in the area of this site. AMBS (2003a) located site EPCS4 in this area, and described it as comprising three stone artefacts (one distal flake, one silcrete flake and one mudstone flaked piece) located on the dirt vehicle access track running up a low slope behind Bardia Village. Therefore, this site has been recorded as EPCS4.</p> <p>The site comprises a total of ten stone artefacts on the two vehicle tracks. Two of the artefacts were located on the western track, on Lot 2 DP807461 (at point EPCS4 (01)), while five of the artefacts were observed along the vehicle track directly behind Ingleburn Village (at points EPCS4 (02) and EPCS4 (03)), and the remaining three artefacts were located on the latter track during the AMBS survey in 2003. Artefacts observed comprised silcrete and mudstone, most of which had been flaked and two of which had been heat shattered. Approximately 75% of the site area was exposed, and ground surface visibility within the exposure was around 100%.</p> <p>The site is currently being impacted by erosion from water and from vehicle use.</p> <p>EPCS4 (01) is located at AGDE302074, AGDN6239146 EPCS4 (03) is located at AGDE302278, AGDN6239193</p>				
Version: June 1998		Data entered by:		Date entered:	



Aboriginal Sites Register of NSW

NPWS, PO Box 1967, Hurstville NSW 2220
Standard Site Recording Form

SITE ENVIRONMENT					
Land form	Flat	Aspect		Slope	
Mark position of the site					
Local rock type		Land use/effect			
Distance from drinking water	100m	Source		Cabramatta Creek tributary	
Resource zone (eg. estuarine, river, forest)		Vegetation			
Edible plants		Faunal resources (include shellfish)			
Other exploitable resources (eg. ochre)					
Are there other sites in the locality	Yes	Are they in the Sites Register	Yes	Other site types include	Stone artefact scatters, isolated finds
SITE MANAGEMENT					
Site condition	Disturbed				
Management recommendations	The site is considered to have moderate archaeological significance and high research potential. Further archaeological investigation of the site is likely to increase the current scientific knowledge of the region, and therefore excavations are recommended.				
Have artefacts been removed from site	No	When			
By whom		Deposited at			
Consent applied for	<input type="checkbox"/>	Consent issued		<input type="checkbox"/>	
Date of issue		Consent number			
SITE INSPECTION AND RECORDING					
Reason for investigation	Aboriginal heritage assessment for proposed South West Rail Link development				
Were local Aborigines contacted or present for the recording	<input type="checkbox"/> Not contacted <input checked="" type="checkbox"/> Contacted and present <input type="checkbox"/> Contacted but not present	Names and addresses	Cliff Foley Dharawal Local Aboriginal Land Council PO Box 20 Buxton NSW 2571 Alfred Fazldeen Cubbitch Barta Native Title Claimants Aboriginal Corporation 55 Nightingale Road Pheasants Nest NSW 2574 Gordon Morton Darug Aboriginal Cultural Heritage Assessments 28 Calala St Mt Druitt NSW 2770 Justine Coplin Darug Custodian Aboriginal Corporation PO Box 81		

Version: June 1998

Data entered by:

Date entered:



Aboriginal Sites Register of NSW

NPWS, PO Box 1967, Hurstville NSW 2220
Standard Site Recording Form

			Windsor NSW 2756 Eve McMartin Darug Tribal Aboriginal Corporation PO Box 441 Blacktown NSW 2148 Yvonne Simms La Perouse Botany Bay Aboriginal Corporation 2/3 Birch Crescent East Corrimal NSW 2518 Keith Ball Wadi Wadi Coomaditchie Aboriginal Corporation 2/3 Birch Crescent East Corrimal NSW 2518 Paul Cummins Woronora Plateau Gundungara Elders Council 2/3 Birch Crescent East Corrimal NSW 2518
Is the site important to local Aborigines			
Verbal/written reference sources	AMBS (in prep) Stage B2 South West Rail Link Aboriginal Heritage Assessment. Report to Parsons Brinckerhoff Australia Pty Ltd. AMBS (2003a) Edmondson Park Composite Site Master Plan: Aboriginal Heritage Management Plan. Consultancy report to Liverpool and Cambelltown City Councils.	ASR report number(s)	C- C-
Photographs taken	Yes	No of Photos attached	2
Site recorded by	Jenna Weston	Date of recording	29 July, 2008
Address/institution	Australian Museum Business Services 6 College St Sydney NSW 2010		

Version: June 1998	Data entered by:	Date entered:
--------------------	------------------	---------------

Updated details: EPCS8



Aboriginal Sites Register of NSW

NPWS, PO Box 1967, Hurstville NSW 2220
Standard Site Recording Form

New Recording Additional

information

SITE IDENTIFICATION					
Site name	EPCS8			NPWS Site Number	45-5-3305
Owner/manager					
Owner Address					
LOCATION					
Location	Lot 1 DP807460				
How to get to the site	Coming from Sydney, travel west on the Hume Highway, bear left at Campbelltown Road, turn right at Zouch Road. Near the end of the road is a gate on the right side of the road. Enter the gate, turn right and follow the dirt track north, until it starts to curve to the east. The site is located on and beside the track at this curve, and incorporates the previously recorded EPCS8, SW3 and SW4.				
1:250,000 map name				NPWS map code	
AMG Zone	56	AMG Easting	300961	AMG Northing	6239813
Method for grid reference	Hand-held GPS	Map scale (if method = map)	1:25,000	Map name	
NPWS District				NPWS Zone	Sydney Zone
Portion no.				Parish	
SITE DESCRIPTION					
Site type(s)	Stone artefact scatter			Site type code (NPWS use only)	
Description of site and contents CHECKLIST: eg. length, width, depth, height of site, shelter, deposit, structure, element eg. tree scar, grooves in rock. DEPOSIT: colour, texture, estimated depth, stratigraphy, contents-shell, bone, stone, charcoal, density & distribution of these, stone types, artefact types. ART: area of decorated surface, motifs, colours, wet/dry pigment, engraving technique, no. of figures, sizes, patination. BURIALS: number & condition of bone, position, age, sex, associated artefacts. TREES: number, alive, dead, likely age, scar shape, position, size, patterns, axe marks, regrowth. QUARRIES: rock type, debris, recognisable artefacts, percentage quarried	<p>This site is located c. 80m south east of a fourth order tributary of Cabramatta Creek, within Lot 1 DP807460. AMBS (2003a) located site EPCS8 in this area, and described it as comprising two mudstone artefacts within an eroded vehicle track on the flats of a tributary of Maxwells (Cabramatta) Creek. Also, Heritage Concepts (2006) located sites SW3 and SW4 in this area, and described them respectively as comprising a single silcrete artefact and a single mudstone artefact, and both located in a creek flat within 50m of water. Given the proximity of these sites to point EPCS8, the fact that they are all described as being located on the creek flat, and the similar artefacts recorded for each, the area has been classified as one large site, and has been recorded as EPCS8 since this was the first recorded name.</p> <p>During the current survey, two stone artefacts were recorded on the creek flats adjacent to a vehicle track which had been built up adjacent to the tributary. These artefacts are both silcrete flakes. The site is currently being impacted by erosion from water and from vehicle use.</p>				
Version: June 1998		Data entered by:		Date entered:	



Aboriginal Sites Register of NSW

NPWS, PO Box 1967, Hurstville NSW 2220

Standard Site Recording Form

SITE ENVIRONMENT					
Land form	Creek flat	Aspect		Slope	
Mark position of the site					
Local rock type		Land use/effect			
Distance from drinking water	80m	Source	Cabramatta Creek tributary		
Resource zone (eg. estuarine, river, forest)		Vegetation			
Edible plants		Faunal resources (include shellfish)			
Other exploitable resources (eg. ochre)					
Are there other sites in the locality	Yes	Are they in the Sites Register	Yes	Other site types include	Stone artefact scatters, isolated finds
SITE MANAGEMENT					
Site condition	Disturbed				
Management recommendations	EPCS8 (at the confluence of Cabramatta Creek) is considered to have moderate research potential and archaeological significance. Further archaeological investigation of this site may increase the current scientific knowledge of the region, and as such, test excavations are recommended.				
Have artefacts been removed from site	No	When			
By whom		Deposited at			
Consent applied for	<input type="checkbox"/>	Consent issued	<input type="checkbox"/>		
Date of issue		Consent number			
SITE INSPECTION AND RECORDING					
Reason for investigation	Aboriginal heritage assessment for proposed South West Rail Link development				
Were local Aborigines contacted or present for the recording	<input type="checkbox"/> Not contacted <input checked="" type="checkbox"/> Contacted and present <input type="checkbox"/> Contacted but not present	Names and addresses	Donna Whillock Dharawal Local Aboriginal Land Council PO Box 20 Buxton NSW 2571 Glenda Chalker Cubbitch Barta Native Title Claimants Aboriginal Corporation 55 Nightingale Road Pheasants Nest NSW 2574 Gordon Morton Darug Aboriginal Cultural Heritage Assessments 28 Calala St Mt Druitt NSW 2770 Leanne Watson Darug Custodian Aboriginal Corporation		

Version: June 1998

Data entered by:

Date entered:



Aboriginal Sites Register of NSW

NPWS, PO Box 1967, Hurstville NSW 2220

Standard Site Recording Form

			PO Box 81 Windsor NSW 2756 Gordon Workman Darug Tribal Aboriginal Corporation PO Box 441 Blacktown NSW 2148 Keith Simms La Perouse Botany Bay Aboriginal Corporation 2/3 Birch Crescent East Corrimal NSW 2518 Allan Carriage Wadi Wadi Coomaditchie Aboriginal Corporation 2/3 Birch Crescent East Corrimal NSW 2518 Paul Cummins Woronora Plateau Gundungara Elders Council 2/3 Birch Crescent East Corrimal NSW 2518
Is the site important to local Aborigines			
Verbal/written reference sources	AMBS (in prep) Stage B2 South West Rail Link Aboriginal Heritage Assessment. Report to Parsons Brinckerhoff Australia Pty Ltd. AMBS (2003a) Edmondson Park Composite Site Master Plan: Aboriginal Heritage Management Plan. Consultancy report to Liverpool and Cambelltown City Councils. Heritage Concepts (2006) South West Rail Link Environmental Assessment – Technical Paper 6: Preliminary Assessment of Aboriginal Archaeological and Cultural Heritage Values. Consultancy report to Parsons Brinckerhoff.	ASR report number(s)	C- C-
Photographs taken	Yes	No of Photos attached	2
Site recorded by	Jenna Weston	Date of recording	6 March, 2008
Address/institution	Australian Museum Business Services 6 College St Sydney NSW 2010		

Version: June 1998

Data entered by:

Date entered:

Updated details: EPCS10



Aboriginal Sites Register of NSW

NPWS, PO Box 1967, Hurstville NSW 2220
Standard Site Recording Form

New Recording Additional

information

SITE IDENTIFICATION					
Site name	EPCS10			NPWS Site Number	
Owner/manager					
Owner Address					
LOCATION					
Location	Lot 1 DP807460				
How to get to the site	Coming from Sydney, travel west on the Hume Highway, bear left at Campbelltown Road, turn right at Zouch Road. Near the end of the road is a gate on the right side of the road. Enter the gate, turn right and follow the dirt track north, around the curve to the east, then turn right onto a track into at the roundabout, turn left at the next roundabout, then at the end of Lot 21 DP29317 (north of the road) turn right onto another dirt track, into an area of trees. The site extends along the track in this area.				
1:250,000 map name				NPWS map code	
AMG Zone	56	AMG Easting	301503	AMG Northing	6239403
Method for grid reference	Hand-held GPS	Map scale (if method = map)	1:25,000	Map name	
NPWS District				NPWS Zone	Sydney Zone
Portion no.				Parish	
SITE DESCRIPTION					
Site type(s)	Stone artefact scatter			Site type code (NPWS use only)	
Description of site and contents CHECKLIST: eg. length, width, depth, height of site, shelter, deposit, structure, element eg. tree scar, grooves in rock. DEPOSIT: colour, texture, estimated depth, stratigraphy, contents-shell, bone, stone, charcoal, density & distribution of these, stone types, artefact types. ART: area of decorated surface, motifs, colours, wet/dry pigment, engraving technique, no. of figures, sizes, patination. BURIALS: number & condition of bone, position, age, sex, associated artefacts. TREES: number, alive, dead, likely age, scar shape, position, size, patterns, axe marks, regrowth. QUARRIES: rock type, debris, recognisable artefacts, percentage quarried	This site is located c. 100 m south of a small first order tributary and c. 300m east of a first order tributary of Cabramatta Creek, within Lot 1 DP807460. The site comprises a total of five stone artefacts on the eroding slope of a vehicle track, in addition to the mudstone artefact recorded as EPCS10 by AMBS in 2003. One of the artefacts was located near the crest of a hill, three of the artefacts were observed within c.5m of each other around 30m along the track (at point EPCS10 (01)), while the fifth artefact was located a further 20m downslope (at point EPCS10 (02) - AGDE301533, AGDN6239428). It seems likely that this fifth artefact had moved down the eroding slope during vehicle use of the track. Artefacts observed comprised mudstone, silcrete and quartz, all of which had been flaked. Ground surface visibility within the exposure was around 70%. The site is currently being impacted by erosion from water and from vehicle use.				
Version: June 1998		Data entered by:		Date entered:	



Aboriginal Sites Register of NSW

NPWS, PO Box 1967, Hurstville NSW 2220

Standard Site Recording Form

SITE ENVIRONMENT					
Land form	Slope	Aspect		Slope	
Mark position of the site					
Local rock type		Land use/effect			
Distance from drinking water	100m	Source	Cabramatta Creek tributary		
Resource zone (eg. estuarine, river, forest)		Vegetation			
Edible plants		Faunal resources (include shellfish)			
Other exploitable resources (eg. ochre)					
Are there other sites in the locality	Yes	Are they in the Sites Register	Yes	Other site types include	Stone artefact scatters, isolated finds
SITE MANAGEMENT					
Site condition	Disturbed				
Management recommendations	Part of the site is proposed to be impacted by the proposed South West Rail Link development, however the site is assessed as having low research potential and low archaeological significance. As such, further archaeological investigation of the site is unlikely to increase the current scientific knowledge of the region. As the development is being assessed under Part 3A of the EP&A Act, no S.90 consent is required for the site.				
Have artefacts been removed from site	No	When			
By whom		Deposited at			
Consent applied for	<input type="checkbox"/>	Consent issued		<input type="checkbox"/>	
Date of issue		Consent number			
SITE INSPECTION AND RECORDING					
Reason for investigation	Aboriginal heritage assessment for proposed South West Rail Link development				
Were local Aborigines contacted or present for the recording	<input type="checkbox"/> Not contacted <input checked="" type="checkbox"/> Contacted and present <input type="checkbox"/> Contacted but not present	Names and addresses	Donna Whillock Dharawal Local Aboriginal Land Council PO Box 20 Buxton NSW 2571 Glenda Chalker Cubbitch Barta Native Title Claimants Aboriginal Corporation 55 Nightingale Road Pheasants Nest NSW 2574 Gordon Morton Darug Aboriginal Cultural Heritage Assessments 28 Calala St Mt Druitt NSW 2770 Leanne Watson		

Version: June 1998

Data entered by:

Date entered:



Aboriginal Sites Register of NSW

NPWS, PO Box 1967, Hurstville NSW 2220

Standard Site Recording Form

			<p>Darug Custodian Aboriginal Corporation PO Box 81 Windsor NSW 2756</p> <p>Gordon Workman Darug Tribal Aboriginal Corporation PO Box 441 Blacktown NSW 2148</p> <p>Keith Simms La Perouse Botany Bay Aboriginal Corporation 2/3 Birch Crescent East Corrimal NSW 2518</p> <p>Allan Carriage Wadi Wadi Coomaditchie Aboriginal Corporation 2/3 Birch Crescent East Corrimal NSW 2518</p> <p>Paul Cummins Woronora Plateau Gundungara Elders Council 2/3 Birch Crescent East Corrimal NSW 2518</p>
Is the site important to local Aborigines			
Verbal/written reference sources	<p>AMBS (in prep) Stage B2 South West Rail Link Aboriginal Heritage Assessment. Report to Parsons Brinckerhoff Australia Pty Ltd.</p> <p>AMBS (2003a) Edmondson Park Composite Site Master Plan: Aboriginal Heritage Management Plan. Consultancy report to Liverpool and Cambelltown City Councils.</p>	ASR report number(s)	C- C-
Photographs taken	Yes	No of Photos attached	2
Site recorded by	Jenna Weston	Date of recording	6 March, 2008
Address/institution	<p>Australian Museum Business Services 6 College St Sydney NSW 2010</p>		

Version: June 1998

Data entered by:

Date entered: