

LEGEND

- BOUNDARY
- PROPOSED STORMWATER PIT
- PROPOSED STORMWATER PIPE
- SWALE DRAIN
- EXISTING STORMWATER SYSTEM
- OVERLAND FLOW
- + RL 5.00 PROPOSED SURFACE LEVEL
- + RL 5.00 EXISTING SURFACE LEVEL
- TOP OF BATTER (max 1:3)
- RW RETAINING WALL (REFER TO SECTION 8 ON SHEET SK02)
- PROPOSED BUILDINGS

REFER TO SKETCH SK06 - SK09 FOR TEMPORARY ROAD AND BUS TURNING LOOP DETAILS

PIT SCHEDULE

PIT No.	PIT TYPE	PIT DIMENSIONS		DIAMETER		DEPTH TO INVERT (m)	COVER RL	GRATE TYPE CLASS
		WIDTH (mm)	LENGTH (mm)	IN (mm)	OUT (mm)			
A1	EXISTING			450	EX 2/375	1.56	4.75	-
A2	GRATED GULLY	900	900	375	450	1.885	5.25	C
A3	GRATED GULLY	900	900	300	375	1.2	5.70	C
A4	1.8m KERB INLET PIT			300	300	1.055	6.25	D
A5	1.8m KERB INLET PIT			-	300	0.825	6.45	D
B1	EXISTING			300	EX 675	1.461	5.261	D
B2	1.8m KERB INLET PIT			300	300	0.985	5.30	D
B3	1.8m KERB INLET PIT			300	300	0.95	5.635	D
B4	1.8m KERB INLET PIT			-	300	0.895	6.10	D
C1	1.8m KERB INLET PIT			FUTURE 300	300	0.78	6.135	C
D1	GRATED GULLY	900	900	-	300	1.35	5.40	C
E1	EXISTING			300	EX 750	1.35	4.735	-
E2	SAG	900	900	-	300	1.46	4.935	C

STAGE 1 - PAVEMENT/STORMWATER TRUNK DRAINAGE PLAN

SCALE 1:500

NOTE- SECONDARY SURFACE DRAINAGE SUMPS/GRATES NOT SHOWN

WARNING
BEWARE OF UNDERGROUND SERVICES
THE LOCATIONS OF UNDERGROUND SERVICES SHOWN ARE APPROXIMATE ONLY AND THEIR EXACT POSITION SHOULD BE PROVEN ON SITE.

ALL EXISTING PROPERTY SERVICES' LOCATIONS AND DEPTHS ARE APPROXIMATE AND MUST BE VERIFIED ON SITE. THE CONTRACTOR SHOULD SUPPLY PRECISE LOCATIONS AND DEPTHS TO THE ENGINEER FOR REVIEW PRIOR TO ANY WORKS THAT MAY AFFECT THESE SERVICES.

WARNING
NO DRAINAGE WORKS SHALL COMMENCE UNTIL THE CONTRACTOR CONFIRMS THE I.L. OF ALL EXISTING DRAINS, AND CONFIRMS IN WRITING WITH THE ENGINEERING SUPERVISOR.

File: G:\2001\19301_Civil\2001\19301\CSK01.dwg Plotted: 21.01.11 at 4:33 PM By: Jonathan Franco

COPYRIGHT
All rights reserved. These drawings, plans and specifications and the copyright therein are the property of the Bonacci Group and must not be used, reproduced or copied wholly or in part without the written permission of the Bonacci Group.

Rev	Description	Date	By	App
P5	SLAB AND BUILDING OUTLINE AMENDED	21.01.11	JF	SN
P4	ACCESS RAMP ADDED, PITS AMENDED	22.12.10	JF	SN
P3	PITS AMENDED & ADDED, BATTER TO PARK AMENDED	17.12.10	JF	SN
P2	LEVELS AND STORMWATER ADDED	03.12.10	JF	TH
P1	PRELIMINARY ISSUE	17.11.10	JF	SN

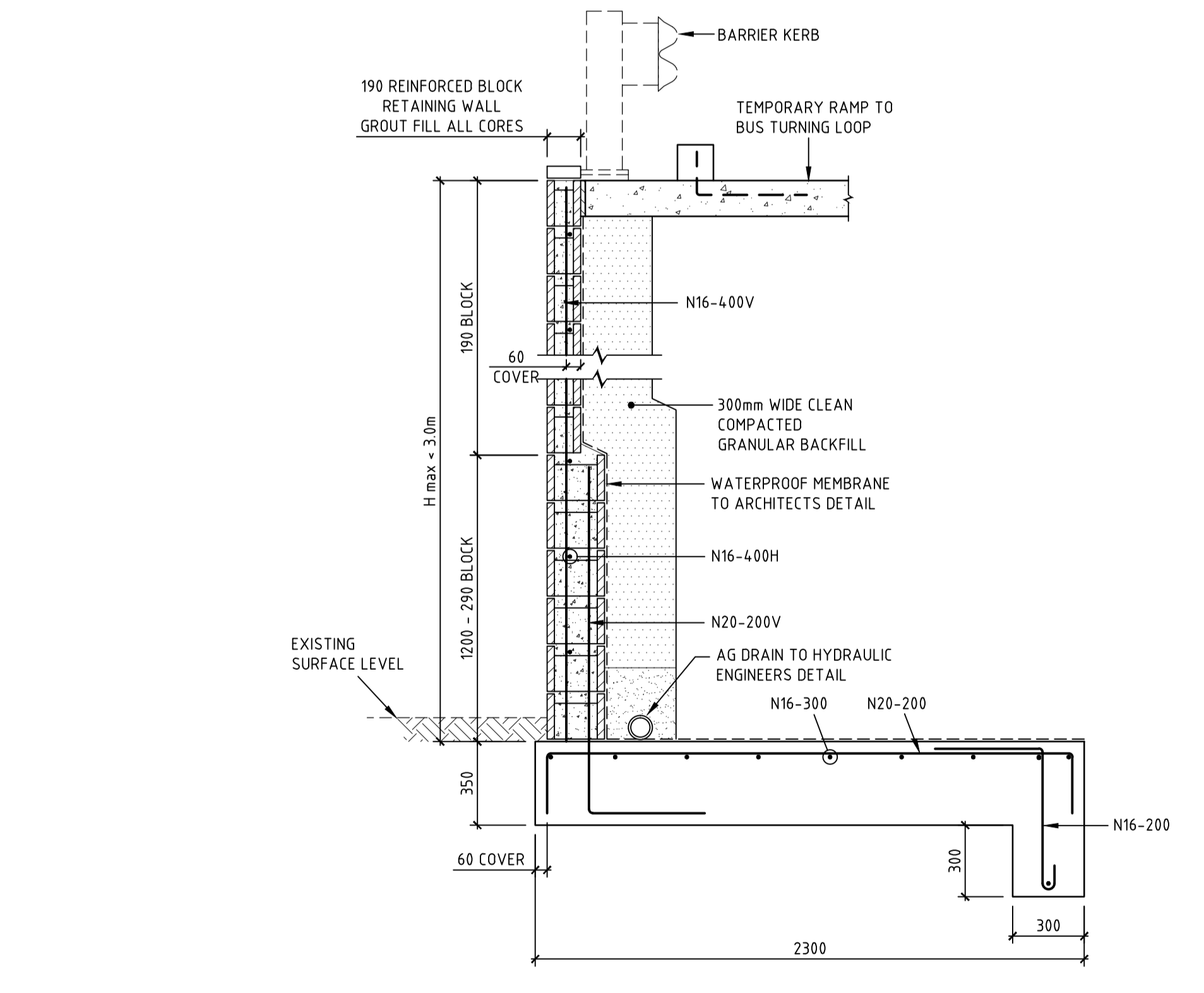
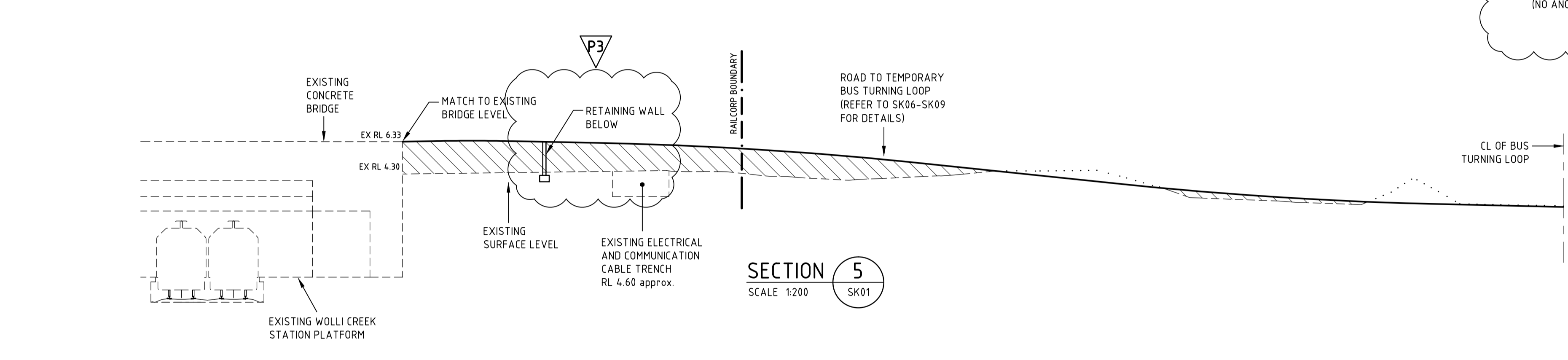
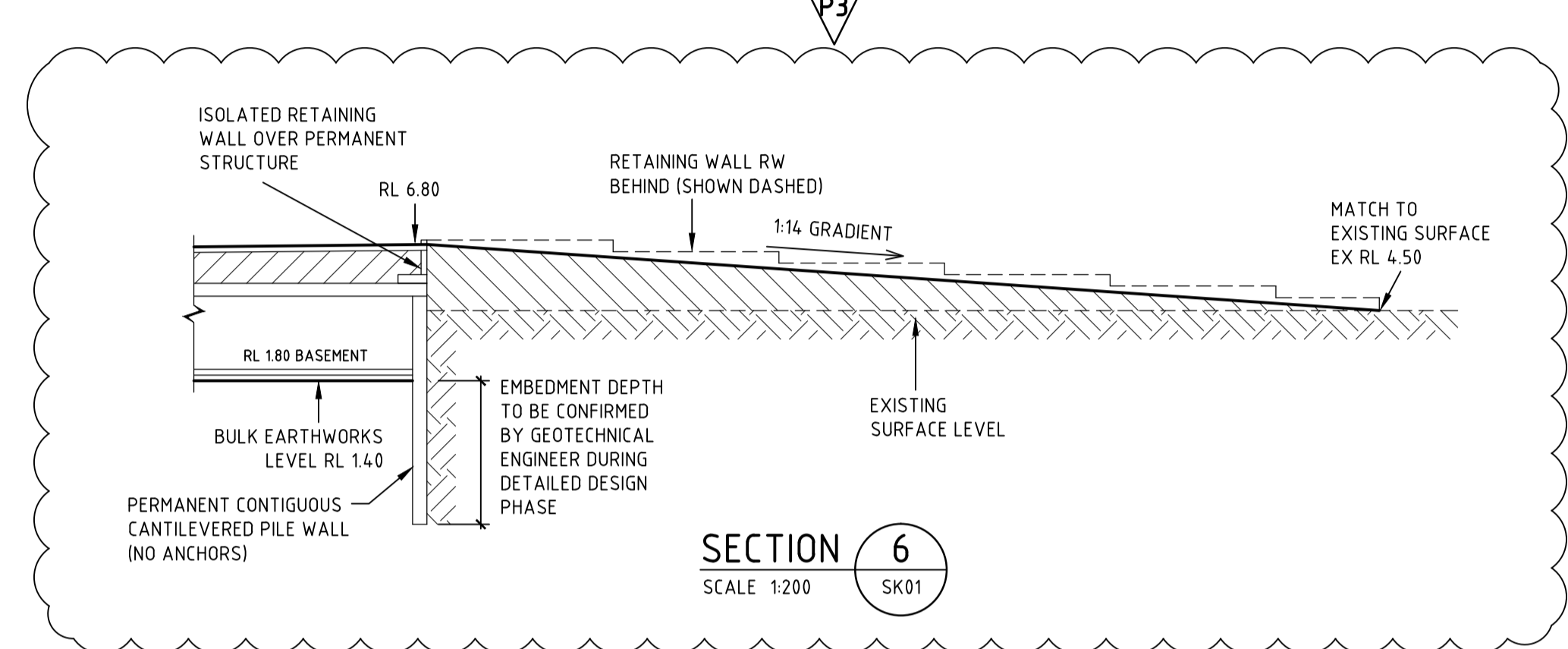
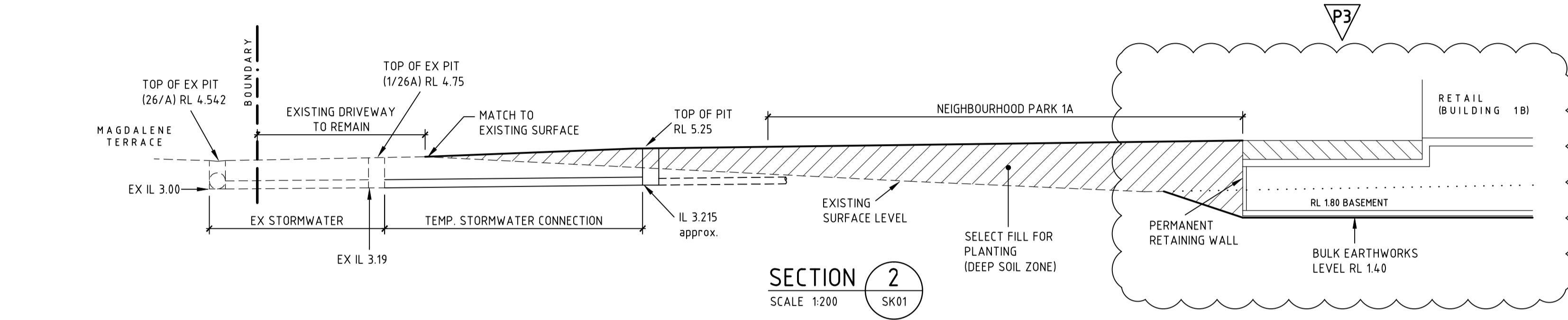
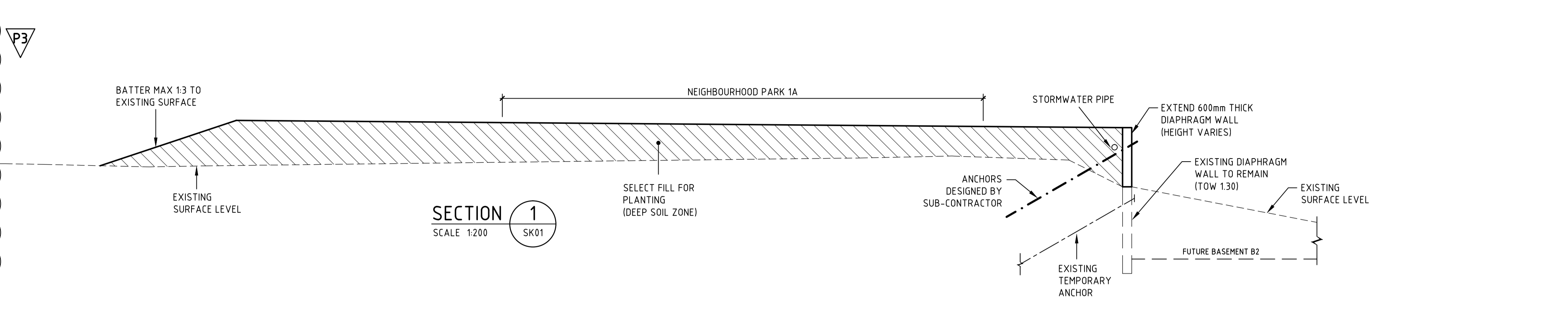
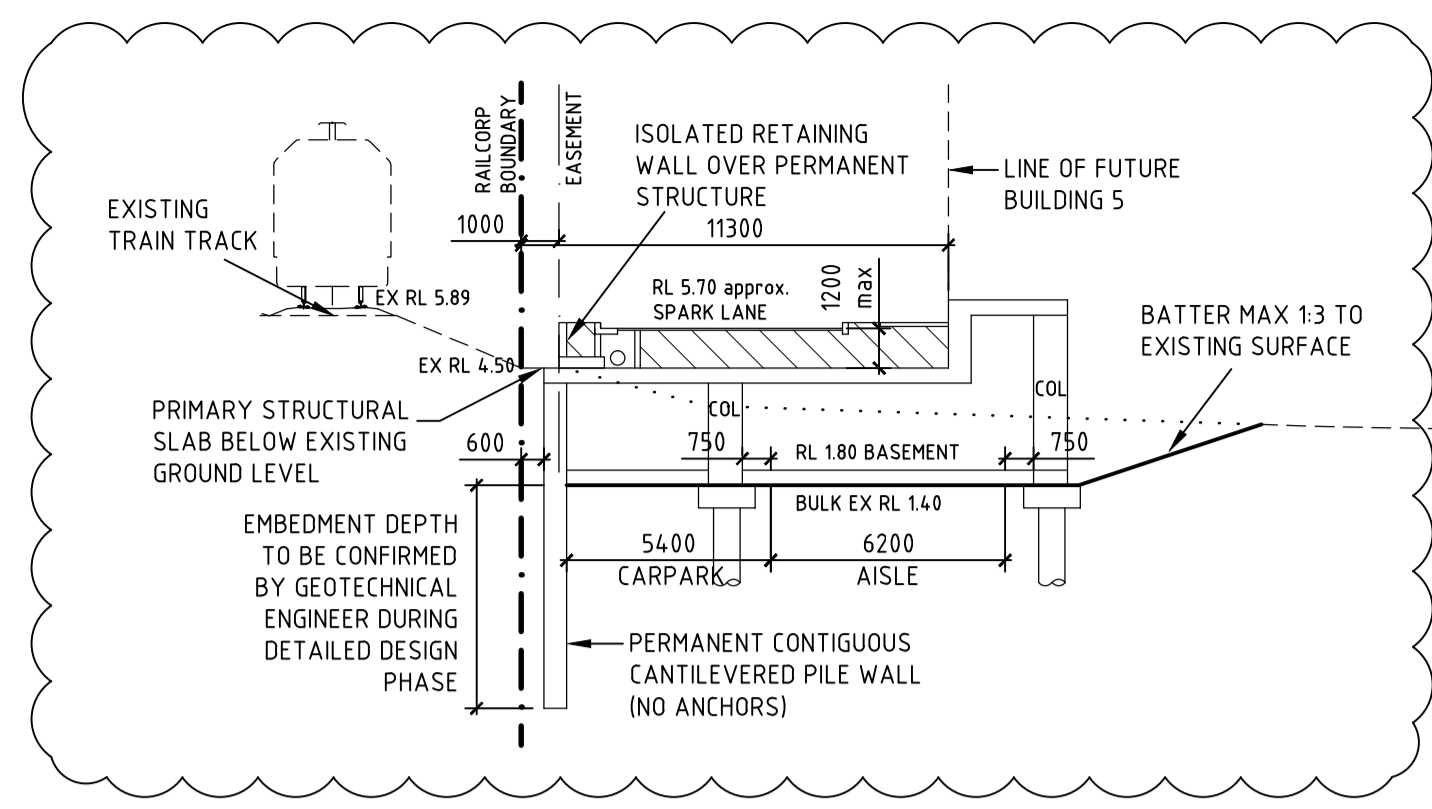
Rev	Description	Date	By	App

BONACCI
Bonacci Group Pty Ltd
ABN 42 060 332 345
Consulting Engineers - Structural - Civil - Infrastructure
4/1 Gloucester Street, The Rocks, Sydney, NSW 2000 Australia
Tel: +61 2 8247 8400 Fax: +61 2 8247 8444
sydney@bonaccigroup.com
www.bonaccigroup.com

Project Name: DISCOVERY POINT WOLLIE CREEK
Drawing Title: STAGE 1 PAVEMENT / STORMWATER TRUNK DRAINAGE PLAN

PRELIMINARY

Designed	SN	Project Director Approved	Date	North
Drawn	JF			
Scale	1:500	Project Ref	Drawing No	Rev
Date	NOV 2010	20 01193 01	CSK01	P5
Sheet				



COPYRIGHT All rights reserved. These drawings, plans and specifications and the copyright therein are the property of the Bonacci Group and must not be used, reproduced or copied wholly or in part without the written permission of the Bonacci Group.

Rev	Description	Date	By	App
P3	SECTIONS 1, 2 & 6 AMENDED	21.01.11	JF	SN
P2	SECTIONS 5 AND 8 AMENDED	17.12.10	JF	SN
P1	PRELIMINARY ISSUE	03.12.10	JF	SN

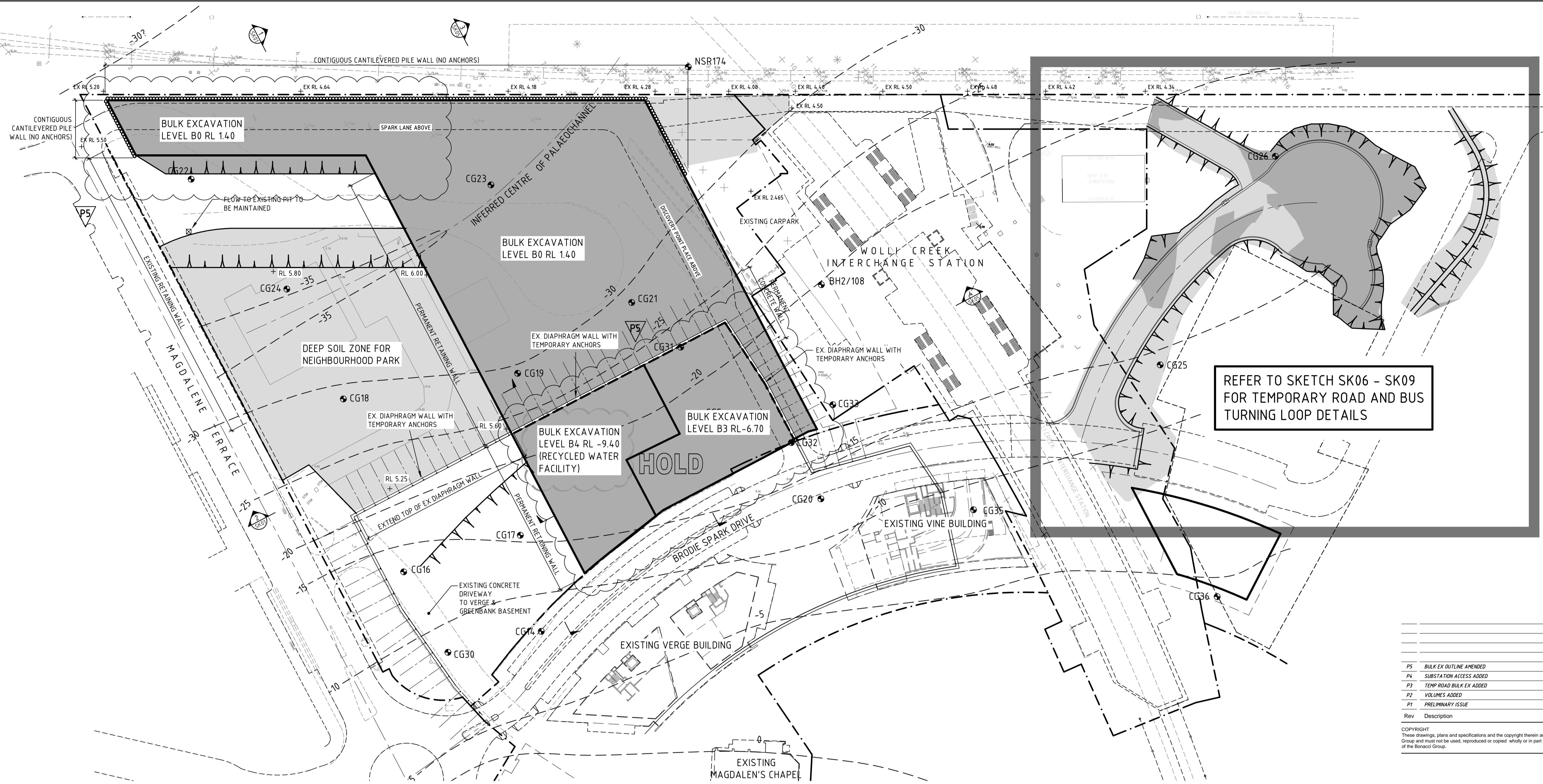
BONACCI
 Bonacci Group Pty Ltd
 ABN 42 060 332 345
 Consulting Engineers, Structural - Civil - Infrastructure
 40 Gloucester Street, The Rocks, Sydney, NSW 2000 Australia
 Tel: +61 2 8247 8400 Fax: +61 2 8247 8444
 sydney@bonaccigroup.com
 www.bonaccigroup.com

Project Name: DISCOVERY POINT WOLLI CREEK
 Drawing Title: STAGE 1 PAVEMENT / STORMWATER SECTIONS

PRELIMINARY

Designed	SN	Project Director Approved	Date	North
Drawn	JF			
Scale	1:200, 20	Project Ref	Drawing No	Rev
Date	NOV 2010	20 01193 01	CSK02	P3
Sheet				

File: G:\J2001\19301_Civil\2001\19301CSK02.dwg Plotted: 21.01.11 at 4:33 PM By: Jonathan Franco



REFER TO SKETCH SK06 - SK09 FOR TEMPORARY ROAD AND BUS TURNING LOOP DETAILS

Rev	Description	Date	By	App
P5	BULK EX OUTLINE AMENDED	21.01.11	JF	SW
P4	SUBSTATION ACCESS ADDED	22.12.10	JF	SW
P3	TEMP ROAD BULK EX ADDED	20.12.10	JF	SW
P2	VOLUMES ADDED	17.12.10	JF	SW
P1	PRELIMINARY ISSUE	03.12.10	JF	SW

COPYRIGHT All rights reserved. These drawings, plans and specifications and the copyright therein are the property of the Bonacci Group and must not be used, reproduced or copied wholly or in part without the written permission of the Bonacci Group.

EARTHWORKS VOLUMES

BUILDING
CUT = 23,530m³

PARK
FILL = 6,510m³

TEMPORARY ROAD
CUT = 1,130m³
FILL = 1,610m³

BUND
FILL = 280m³

ACCESS RAMP TO EXISTING CARPARK
FILL = 200m³

TOTAL
CUT = 24,660m³
FILL = 8,600m³

NOTE
VOLUMES ARE APPROXIMATE ONLY AND DO NOT INCORPORATE BULKING FACTORS, OVER EXCAVATION AND OSD. VOLUMES HAVE BEEN CALCULATED BETWEEN EXISTING LEVELS AND BULK EARTHWORKS LEVELS.

STAGE 1 - BULK EARTHWORKS PLAN LAYOUT

SCALE 1:500 0m 5m 10m 20m 30m

LEGEND

	BOUNDARY		TOP OF BATTER (max 1:3)
	PROPOSED SURFACE LEVEL		ROCK CONTOUR
	EXISTING SURFACE LEVEL		CG25
	CUT TO BULK EARTHWORKS LEVEL		CG5
	FILL TO BULK EARTHWORKS LEVEL		
	FUTURE STAGE 6 CARPARK		

CURRENT TEST BORE HOLE LOCATIONS (CG9-CG36) - REFER TO 'COFFEY' GEOTECHNICAL REPORT No. S20325/05-AP DATED 15 AUGUST 2003 APPENDIX A

PREVIOUS TEST BORE HOLE LOCATIONS (CG4-CG8, NSR174, BH2/108) - REFER TO 'COFFEY' GEOTECHNICAL REPORT No. S20325/05-AP DATED 15 AUGUST 2003 APPENDIX J

DISCOVERY POINT WOLLIE CREEK



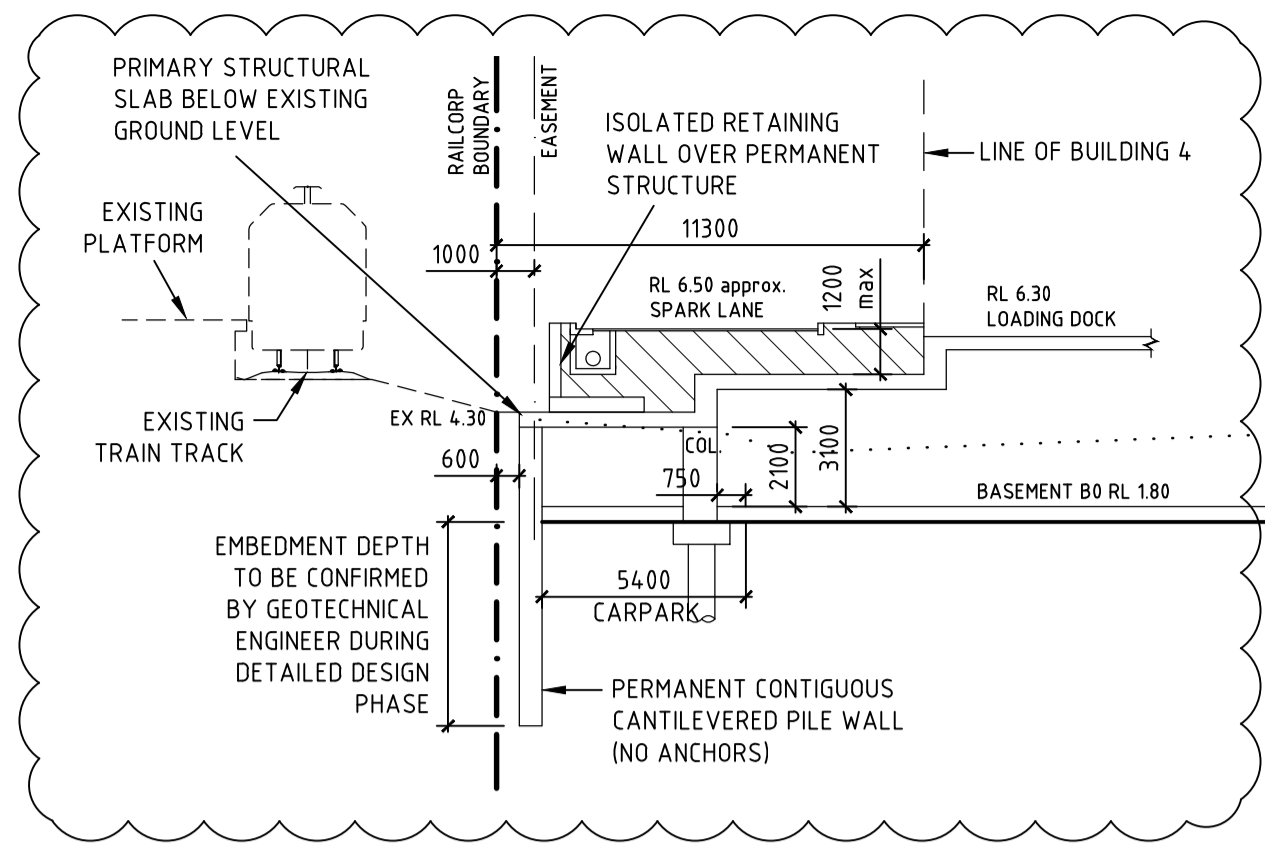
Bonacci Group Pty Ltd
ABN 42 060 332 345
Consulting Engineers, Structural - Civil - Infrastructure
410 Gloucester Street, The Rocks, Sydney, NSW 2000 Australia
Tel: +61 2 8247 8400 Fax: +61 2 8247 8444
sydney@bonaccigroup.com
www.bonaccigroup.com

STAGE 1 BULK EARTHWORKS PLAN LAYOUT

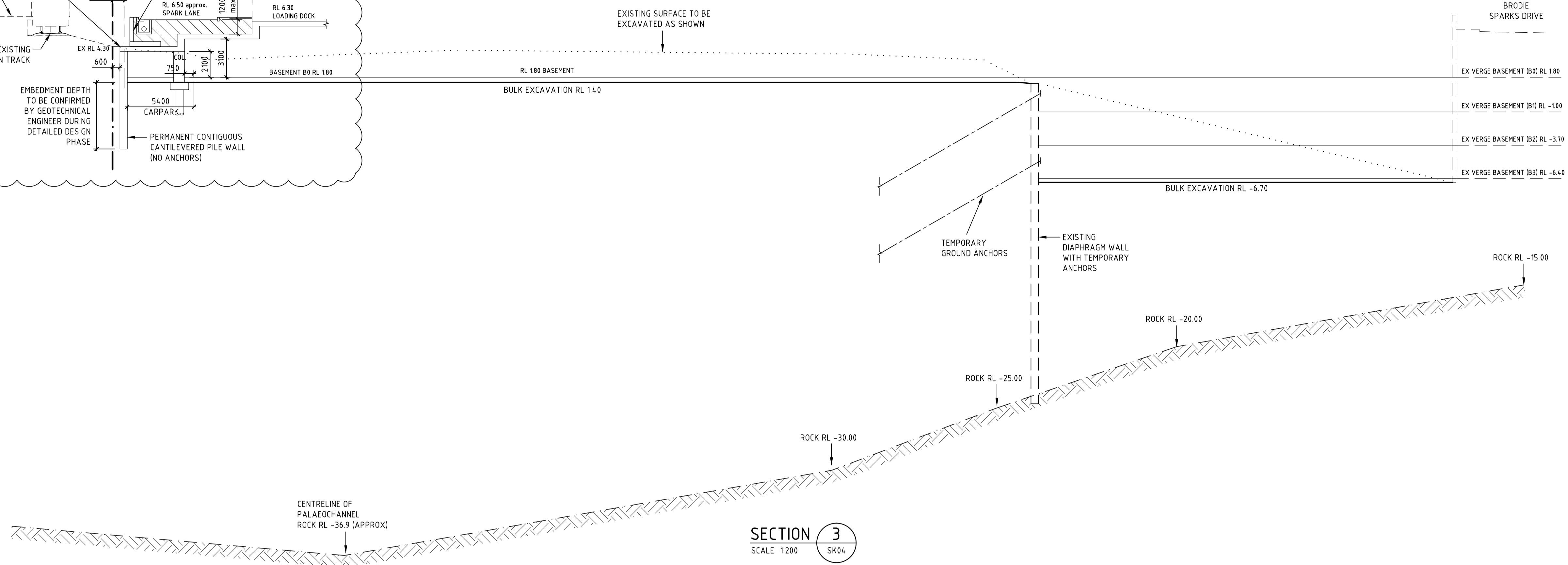
PRELIMINARY

Designed	Project Director Approved	Date	North
Drawn	JF		
Scale	1:500	Project Ref	Drawing No
Date	NOV 2010	20 01193 01	Rev
Sheet		CSK04	P5

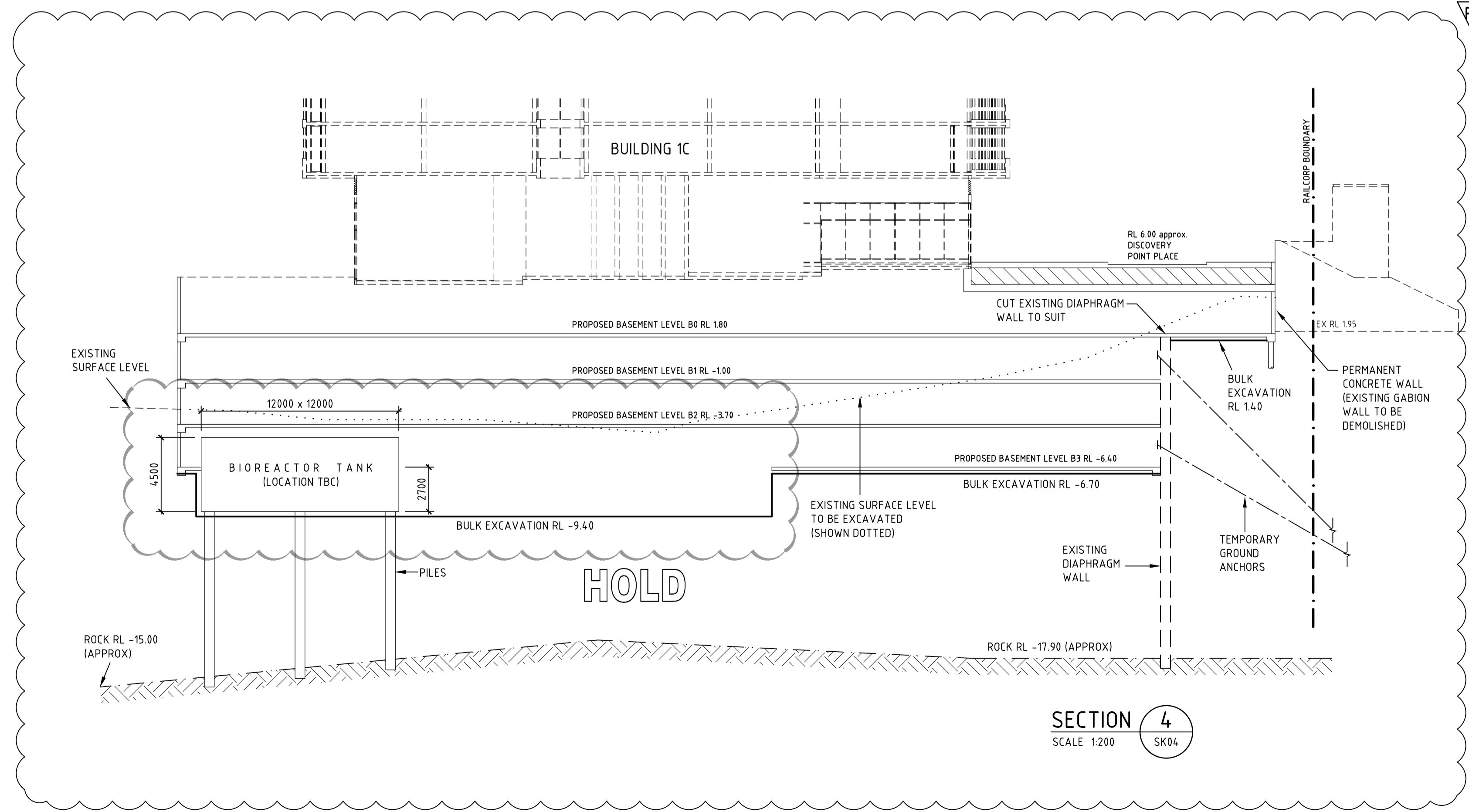
File: G:\Jobs\2010\19301_Civil\2010\19301CSK04.dwg Plotted: 21.01.11 at 4:34 PM By: Jonathan Franco



P2



SECTION 3
SCALE 1:200
SK04



P2

SECTION 4
SCALE 1:200
SK04

Rev	Description	Date	By	App
P2	SECTION 3 & 4 AMENDED	21/01/11	JF	SW
P1	PRELIMINARY ISSUE	03/12/10	JF	SW

COPYRIGHT All rights reserved. These drawings, plans and specifications and the copyright therein are the property of the Bonacci Group and must not be used, reproduced or copied wholly or in part without the written permission of the Bonacci Group.

DISCOVERY POINT
WOLLIE CREEK



Bonacci Group Pty Ltd
 ABN 42 060 332 345
 Consulting Engineers, Structural - Civil - Infrastructure
 40 Gloucester Street, The Rocks, Sydney, NSW 2000 Australia
 Tel: +61 2 8247 8400 Fax: +61 2 8247 8444
 sydney@bonaccigroup.com
 www.bonaccigroup.com

STAGE 1
BULK EARTHWORKS
SECTIONS

PRELIMINARY			
Designed	Project Director Approved	Date	North
Drawn JF			
Scale 1:500	Project Ref	Drawing No	Rev
Date NOV 2010	20 01193 01	CSK05	P2
Sheet			

File: G:\Jobs\200119301_Civil\200119301CSK05.dwg Plotted: 21/01/11 at 4:38 PM By: Jonathan Franco