

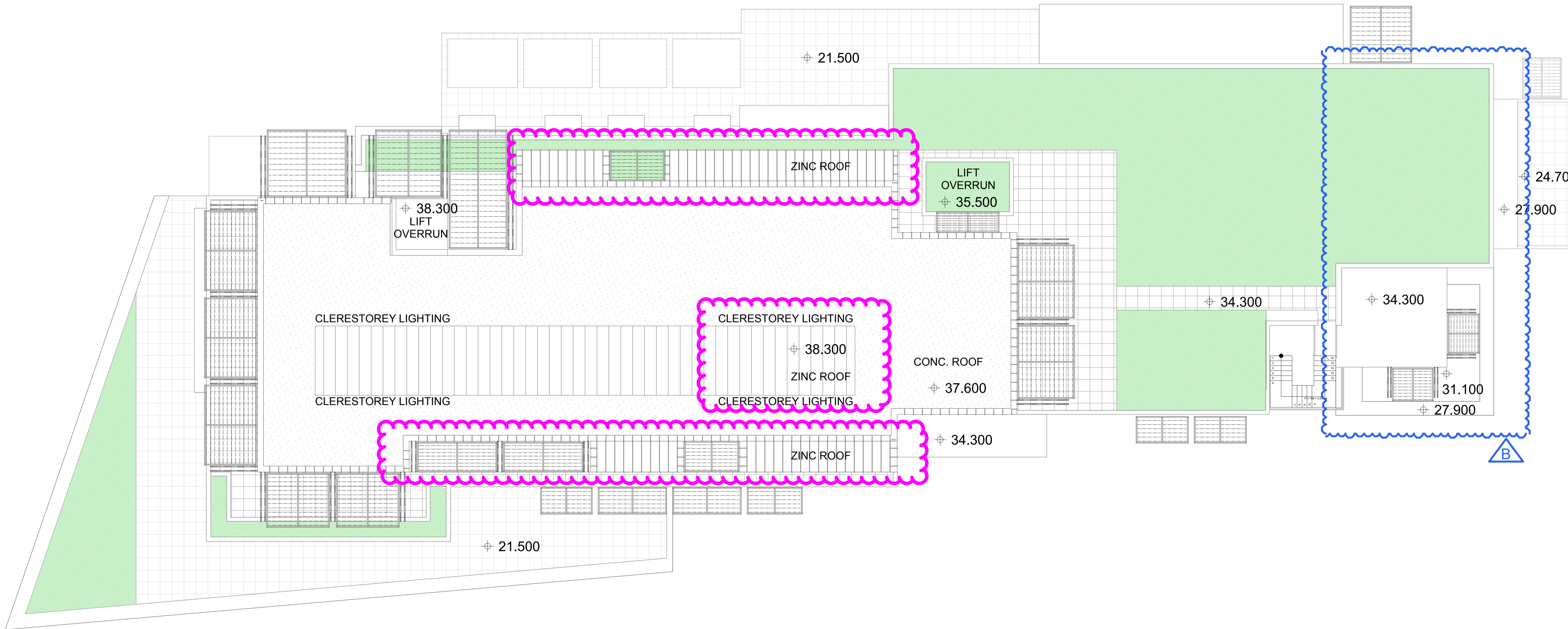
\*Copyright JPR Architects Pty Ltd. Reproduction of the whole or part of this documents constitutes an infringement of copyright. The information, ideas and concepts contained in this document are confidential and the recipient of this document is prohibited from disclosing such information, ideas and concepts to any person without the prior written consent of JPR Architects Pty Ltd.\*

Rev B 06/06/2011 Overall height of Brown St ILU building reduced by deleting top floor

CAUTION: Drawings which have been scanned, saved in PDF format, and/or reprinted, other than by JPR, may not be to scale and should not be scaled or relied on for area calculations. This design has had no input from relevant planning and services or BCA consultants and should not be construed as final.

DA drawings showing extent of metal roofs

FOR MAJOR PROJECT APPLICATION ONLY



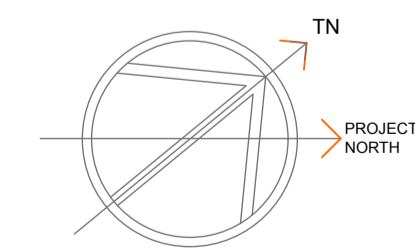
RACF Building - Roof Plan

\*Copyright JPR Architects Pty Ltd.  
 Reproduction of the whole or part of this documents constitutes an infringement of copyright. The information, ideas and concepts contained in this document are confidential and the recipient of this document is prohibited from disclosing such information, ideas and concepts to any person without the prior written consent of JPR Architects Pty Ltd.\*

Rev B 06/06/2011 RACF levels 5 & 6 north east corner amended to reduce bulk & articulate elevation

CAUTION: Drawings which have been scanned, saved in PDF format, and/or reprinted, other than by JPR, may not be to scale and should not be scaled or relied on for area calculations.

This design has had no input from relevant planning and services or BCA consultants and should not be construed as final



**"THE TERRACES"**  
 SCOTTISH HOSPITAL - 2 COOPER ST. PADDINGTON

PRINCIPAL ARCHITECT  
**jpr architects pty limited**  
 20/50 Stanley Street East Sydney NSW 2010 tel +61 2 9366 1133 fax +61 2 9366 1166 email jpr@jpr.com.au

CONSULTING ARCHITECT: URBAN DESIGN  
**GMU** GM Urban Design + Architecture Pty Ltd

CONSULTING ARCHITECT: AGED CARE  
**Flower and Samios**

CONSULTING ARCHITECT: HERITAGE  
**CM+** Conybeare Morrison International Pty Ltd  
 Architects Interiors Heritage Urban Design Masterplanning  
 T. 61 2 8244 8888 F. 61 2 8244 8877 E. mail@cmplus.com.au

SCALE AT A1  
**1:100**  
 REVISION  
**B**

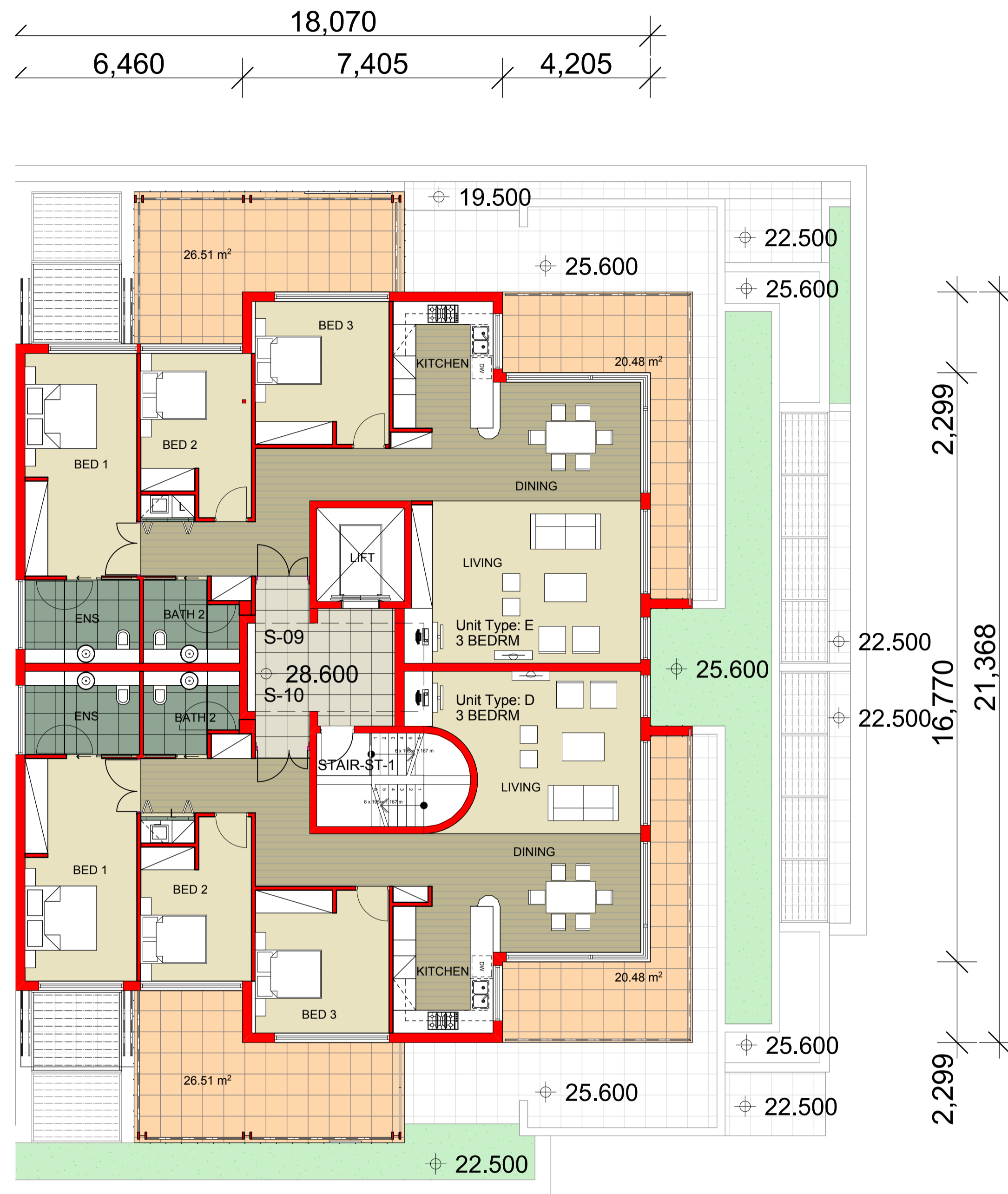
DATE  
 07/10/2010  
 DRAWN  
 RM / YS/ RK

PROJECT No  
 2006067  
 ITEM No  
 38108

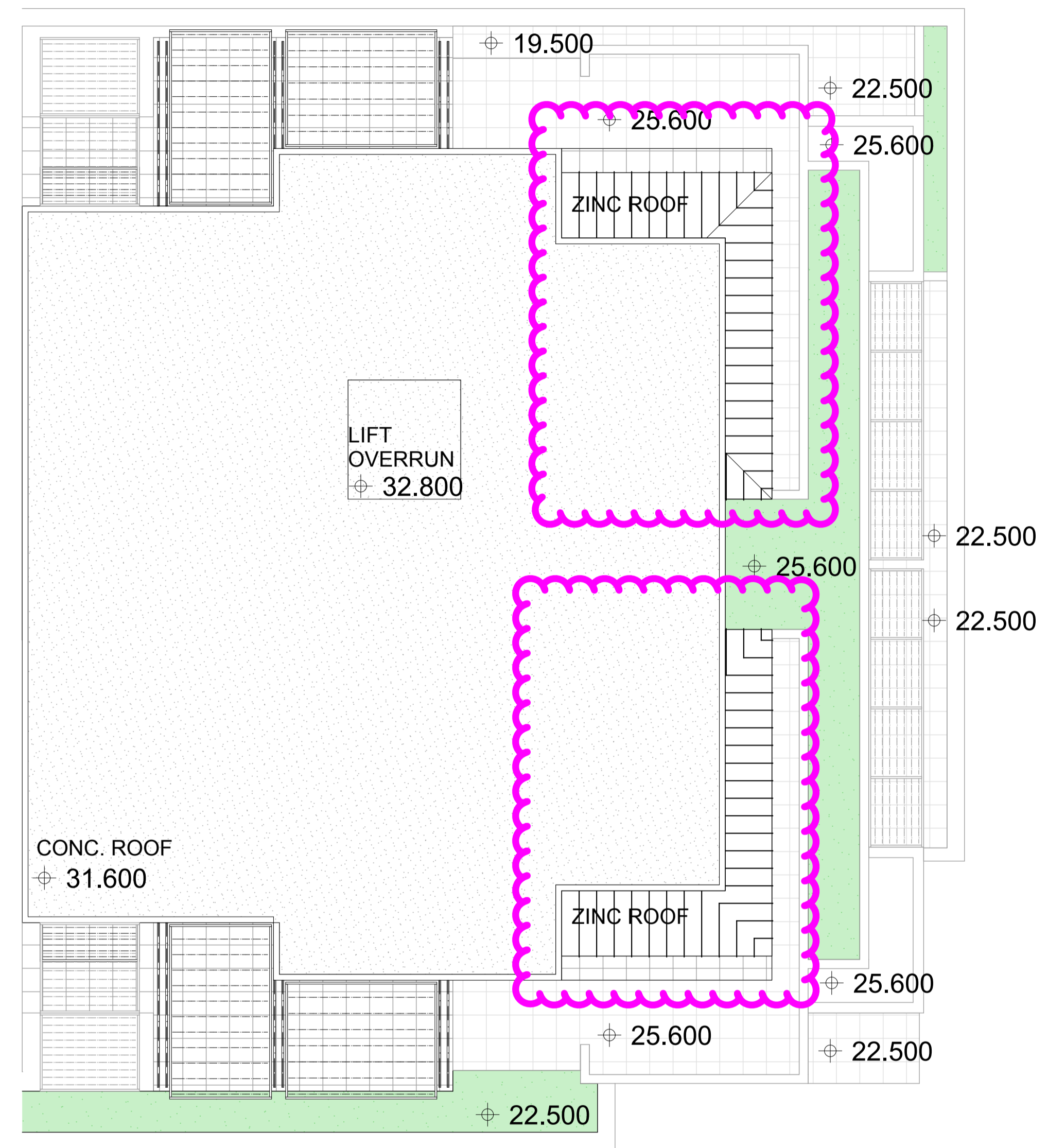
PROJECT ADDRESS  
 2 COOPER ST. PADDINGTON

CLIENT  
 Presbyterian Aged Care PADDINGTON

DRAWING TITLE  
**RACF Building - Roof Plan**  
 DRAWING No  
**DA 427**



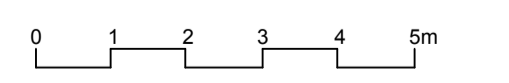
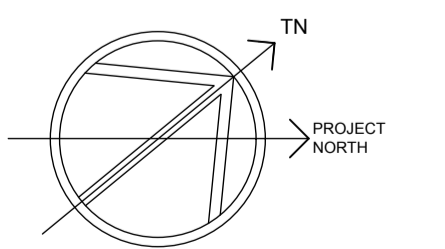
STEPHEN STREET ILU - LEVEL 5

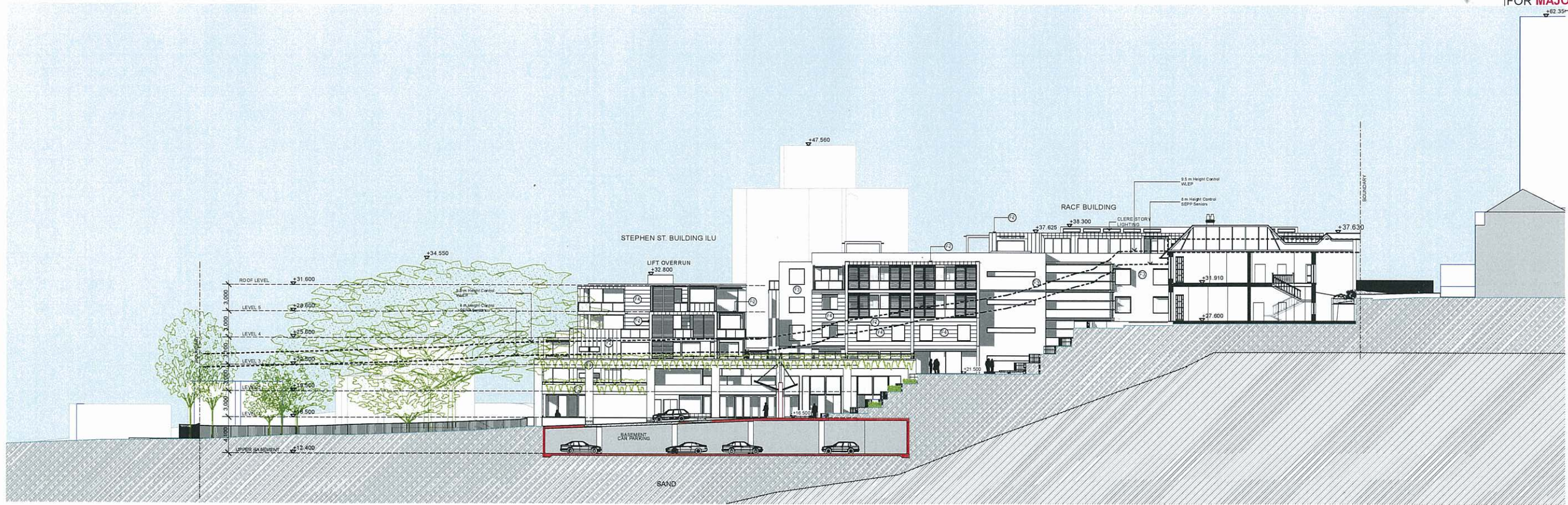


STEPHEN STREET ILU - ROOF

\*Copyright JPR Architects Pty Ltd. Reproduction of the whole or part of this documents constitutes an infringement of copyright. The information, ideas and concepts contained in this document are confidential and the recipient of this document is prohibited from disclosing such information, ideas and concepts to any person without the prior written consent of JPR Architects Pty Ltd.\*

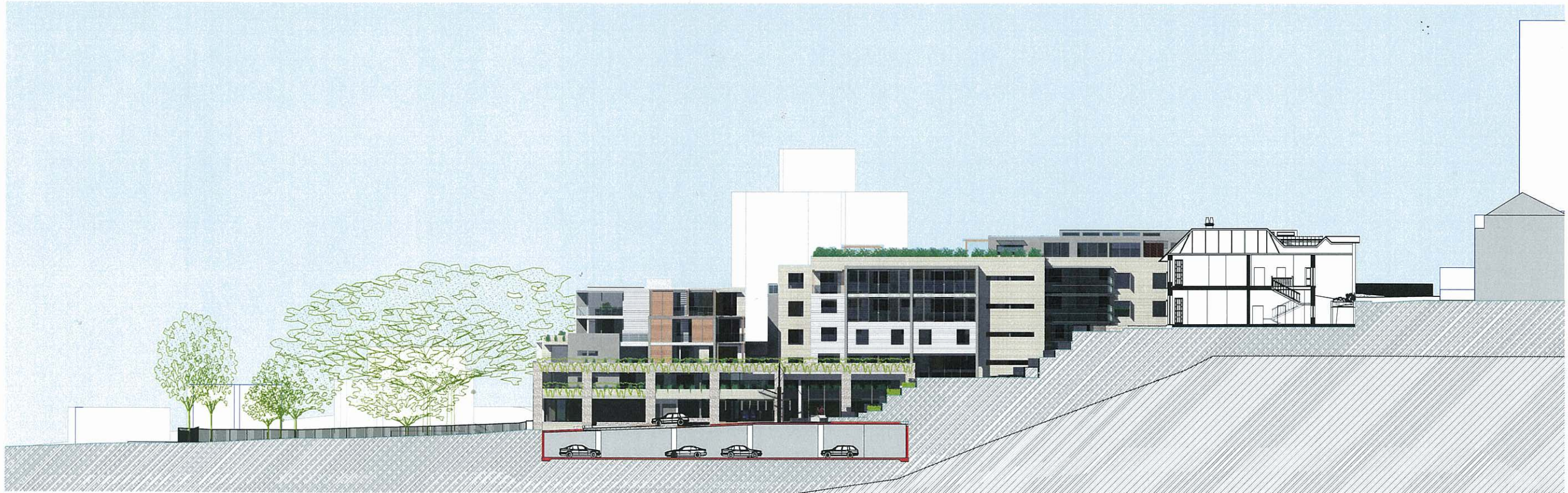
CAUTION: Drawings which have been scanned, saved in PDF format, and/or reprinted, other than by JPSA, may not be to scale and should not be scaled or relied on for area calculations. This design has had no input from relevant planning and services or BCA consultants and should not be construed as final.





- EXTERNAL FINISHES LEGEND**
- ① DRY PACK STONE WALL - THREDBO GREY COLOUR SANDSTONE
  - ② METAL CLADDING
  - ③ MASONRY WALL - BRICK 'JUTE SMOOTH'
  - ④ PROFILED ALUMINIUM BOARDING - REVERSE BRICK VENEER WALLS
  - ⑤ RENDER AND PAINTED
  - ⑥ WINDOW - ALUMINIUM FRAMED GLAZING
  - ⑦ BALUSTRADE - STAINLESS STEEL FRAMED GLASS INFILL BALUSTRADE
  - ⑧ VERTICAL SHADING LOUVRES - ALUMINIUM FRAMED WITH RECONSTITUTED TIMBER LOUVRES
  - ⑨ VERTICAL SHADING LOUVRES - GLASS LOUVRES
  - ⑩ HORIZONTAL SUNSCREEN - TIMBER POST & BEAM ON STEEL FRAME WITH ALUMINIUM BLADES / GRILL LOUVRES
  - ⑪ FRAMELESS GLASS CANOPY WALKWAY WITH TIMBER AND STEEL STRUCTURE
  - ⑫ ALUMINIUM LOUVER WIDE BLADE SUNSCREEN
  - ⑬ HORIZONTAL TIMBER SUNSCREEN

A Longitudinal Section 1- Looking East  
**TECHNICAL SECTION**



- BUILDING LEGEND**
- HB HERITAGE BUILDING ILU
  - RACF RACF BUILDING
  - B BROWN STREET BUILDING ILU
  - S STEPHEN STREET BUILDING ILU
  - GKL GATE KEEPERS LODGE BUILDING ILU



**RENDERED SECTION**

© Copyright JPR Architects Pty Ltd.  
Reproduction of the whole or part of this document constitutes an infringement of copyright. The information, ideas and concepts contained in this document are confidential and the recipient of this document is prohibited from disclosing such information, ideas and concepts to any person without the prior written consent of JPR Architects Pty Ltd.

CAUTION: Drawings which have been scanned, saved in PDF format, and/or reprinted, other than by JPR Architects Pty Ltd, may not be to scale and should not be scaled or relied on for area calculations.

This design has had no input from relevant planning and services or BCA consultants and should not be construed as final.

**"THE TERRACES"**  
SCOTTISH HOSPITAL - 2 COOPER ST. PADDINGTON

PRINCIPAL ARCHITECT  
  
 jpr architects pty limited  
2050 Stanley Street East Sydney NSW 2010 tel +61 2 9336 1133 fax +61 2 9366 1160 email jpr@jpra.com.au

CONSULTING ARCHITECT: URBAN DESIGN  
  
 GMU  
GM Urban Design + Architecture Pty Ltd

CONSULTING ARCHITECT: AGED CARE  
  
 Flower and Samios

CONSULTING ARCHITECT: HERITAGE  
  
 CM+ Conybeare Morrison International Pty Ltd  
Architects Interiors Heritage Urban Design Masterplanning  
 T 61 2 8244 8888 F 61 2 8244 8877 E mail@cmplus.com.au

SCALE AT A1  
**1:250**

DATE  
07/06/2010

PROJECT No  
2006067

REVISION  
**A**

DRAWN  
RM / YS / RK

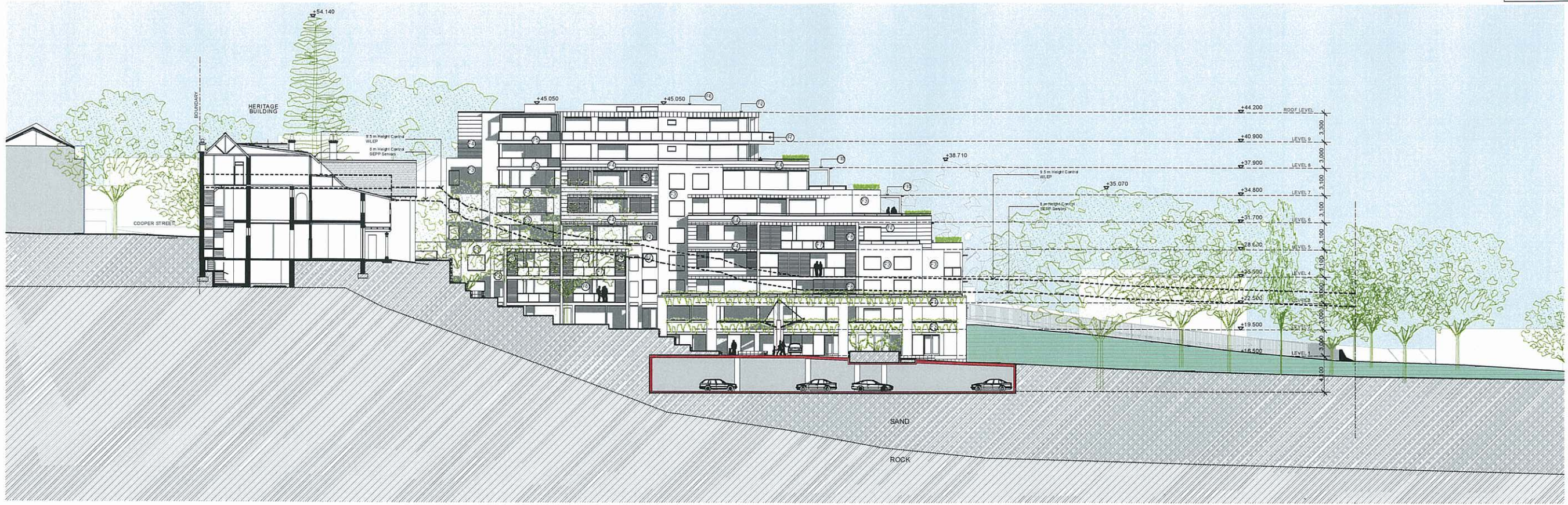
ITEM No  
37873

PROJECT ADDRESS  
2 COOPER ST. PADDINGTON

CLIENT  
Presbyterian Aged Care PADDINGTON

DRAWING TITLE  
**Longitudinal Section A**

DRAWING No  
DA 221



EXTERNAL FINISHES LEGEND

- 1 DRY PACK STONE WALL - THREDDO GREY COLOUR SANDSTONE
- 2 METAL CLADDING
- 3 MASONRY WALL - BRICK 'JUTE SMOOTH'
- 4 PROFILED ALUMINIUM BOARDING - REVERSE BRICK VENEER WALLS
- 5 RENDER AND PAINTED
- 6 WINDOW - ALUMINIUM FRAMED GLAZING
- 7 BALUSTRADE - STAINLESS STEEL FRAMED GLASS INFILL BALUSTRADE
- 8 VERTICAL SHADING LOUVRES - ALUMINIUM FRAMED WITH RECONSTITUTED TIMBER LOUVRES
- 9 VERTICAL SHADING LOUVRES - GLASS LOUVRES
- 10 HORIZONTAL SUNSCREEN - TIMBER POST & BEAM ON STEEL FRAME WITH ALUMINIUM GLAZES / GRILL LOUVRES
- 11 FRAMELESS GLASS CANOPY WALKWAY WITH TIMBER AND STEEL STRUCTURE
- 12 ALUMINIUM LOUVER WIDE BLADE SUNSCREEN
- 13 HORIZONTAL TIMBER SUNSCREEN

B Longitudinal Section 2- Looking West

TECHNICAL SECTION



BUILDING LEGEND

- HB HERITAGE BUILDING ILLU
- RACF RACF BUILDING
- B BROWN STREET BUILDING ILLU
- S STEPHEN STREET BUILDING ILLU
- GKL GATE KEEPERS LODGE BUILDING ILLU

KEY PLAN



RENDERED SECTION

©Copyright JPR Architects Pty Ltd. Reproduction of the whole or part of this document constitutes an infringement of copyright. The information, ideas and concepts contained in this document are confidential and the recipient of this document is prohibited from disclosing such information, ideas and concepts to any person without the prior written consent of JPR Architects Pty Ltd.

CAUTION: Drawings which have been scanned, saved in PDF format, and/or reprinted, other than by JPR Architects Pty Ltd, may not be to scale and should not be scaled or relied on for area calculations. This design has had no input from relevant planning and services or BCA consultants and should not be construed as final.

**"THE TERRACES"**  
SCOTTISH HOSPITAL - 2 COOPER ST. PADDINGTON

PRINCIPAL ARCHITECT  
 jpr architects pty limited  
 2050 Stanley Street East Sydney NSW 2015 tel: +61 2 9336 1133 fax: +61 2 9366 1166 email: jpr@jpra.com.au

CONSULTING ARCHITECT: URBAN DESIGN  
 GMU Urban Design + Architecture Pty Ltd

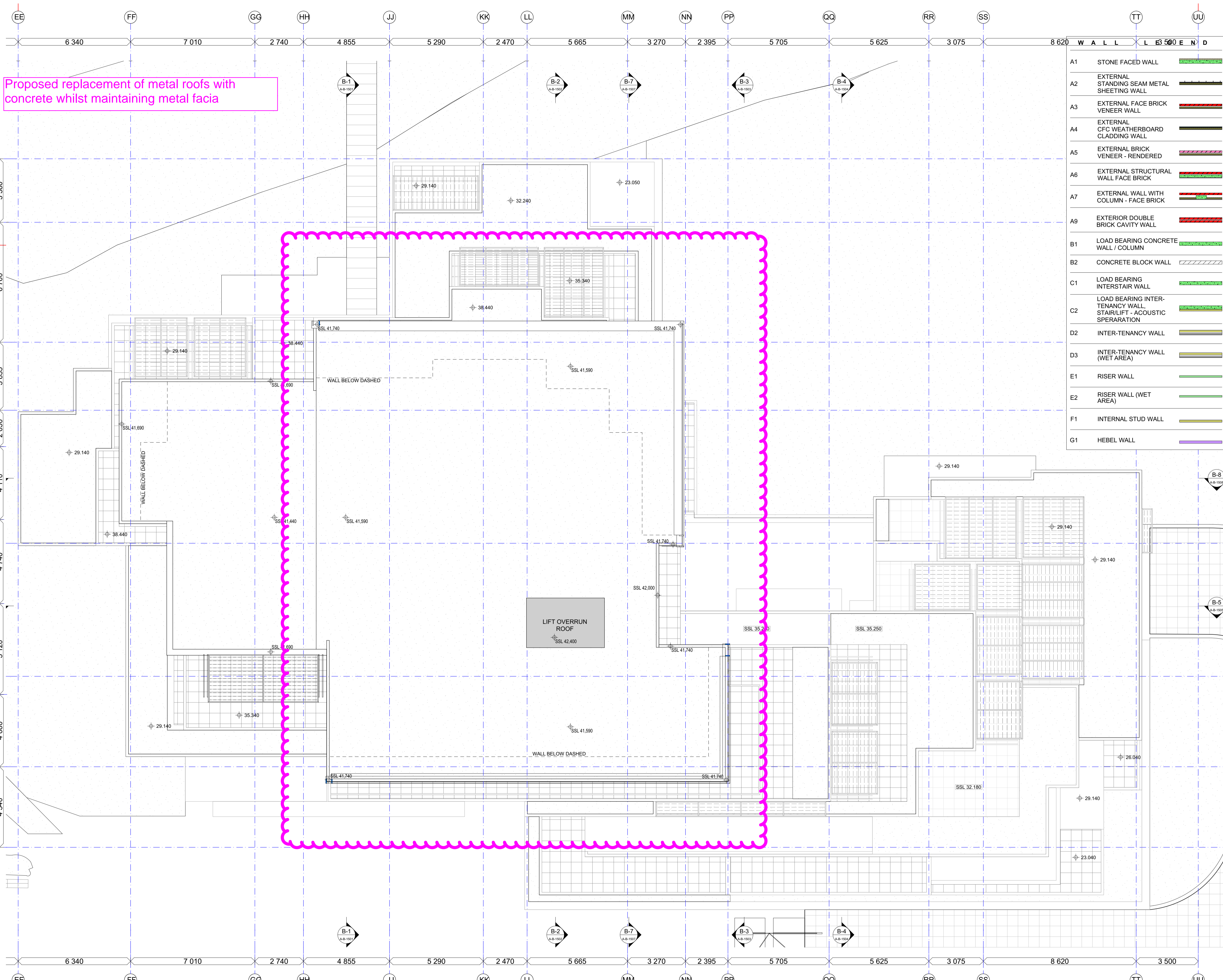
CONSULTING ARCHITECT: AGED CARE  
 Flower and Samios

CONSULTING ARCHITECT: HERITAGE  
 CMT  
 Conybeare Morrison International Pty. Ltd  
 Architecture, Interiors, Heritage, Urban Design, Landscape Planning  
 T: 61 2 9244 8888 F: 61 2 9244 8877 E: mail@cmplus.com.au

SCALE AT A1: 1:250  
 DATE: 07/06/2010  
 PROJECT No: 2006067  
 REVISION: A  
 DRAWN: RM / YS / RK  
 ITEM No: 37674

PROJECT ADDRESS: 2 COOPER ST. PADDINGTON  
 CLIENT: Presbyterian Aged Care PADDINGTON

DRAWING TITLE: Longitudinal Section B  
 DRAWING No: DA 222



Proposed replacement of metal roofs with concrete whilst maintaining metal facia

Code	Description	Material/Finish
A1	STONE FACED WALL	[Symbol]
A2	EXTERNAL STANDING SEAM METAL SHEETING WALL	[Symbol]
A3	EXTERNAL FACE BRICK VENEER WALL	[Symbol]
A4	EXTERNAL CFC WEATHERBOARD CLADDING WALL	[Symbol]
A5	EXTERNAL BRICK VENEER - RENDERED	[Symbol]
A6	EXTERNAL STRUCTURAL WALL FACE BRICK	[Symbol]
A7	EXTERNAL WALL WITH COLUMN - FACE BRICK	[Symbol]
A9	EXTERIOR DOUBLE BRICK CAVITY WALL	[Symbol]
B1	LOAD BEARING CONCRETE WALL / COLUMN	[Symbol]
B2	CONCRETE BLOCK WALL	[Symbol]
C1	LOAD BEARING INTERSTAIR WALL	[Symbol]
C2	LOAD BEARING INTER-STAIR/LIFT - ACOUSTIC SPERARATION	[Symbol]
D2	INTER-TENANCY WALL	[Symbol]
D3	INTER-TENANCY WALL (WET AREA)	[Symbol]
E1	RISER WALL	[Symbol]
E2	RISER WALL (WET AREA)	[Symbol]
F1	INTERNAL STUD WALL	[Symbol]
G1	HEBEL WALL	[Symbol]

REV	DATE	DESCRIPTION
1	14/11/14	PRELIMINARY ISSUE - 1
2	20/11/14	PRELIMINARY ISSUE - 2
3	02/12/14	PRELIMINARY ISSUE - 3
4	18/7/14	PRELIMINARY ISSUE - 4 - ECI PHASE
5	13/02/15	PRELIMINARY ISSUE - 5 - ECI PHASE
6	26/02/15	PRELIMINARY ISSUE - 6 - ECI FINAL ISSUE
8	11/11/15	DOCUMENTATION UPDATE
9	25/02/16	FOR MASONRY PACKAGE
10	02/03/16	FOR FACADE PACKAGE
11	04/03/16	WINDOW NUMBER CLARIFICATION

CONTRACTOR TO VERIFY ALL DIMENSIONS ON SITE PRIOR TO COMMENCING WORK. JPR IS TO BE NOTIFIED OF ANY DISCREPANCIES IN THE DIMENSION AND SETTING OUT OF THE WORK. COPYRIGHT OF DESIGNS SHOWN HEREON IS RETAINED BY JPR. AUTHORITY IS REQUIRED FOR ANY REPRODUCTION.



Presbyterian Aged Care  
**Brookfield MULTIPLEX** **BM**

CLIENT:  
**Brookfield Multiplex Pty Ltd**  
 Level 22, 135 King St  
 Sydney, NSW 2000

DOCUMENT REVIEW - BROOKFIELD MULTIPLEX  
 A - Acceptable for Construction  
 B - Acceptable for Construction subject to comments. Correct & Resubmit  
 C - Unacceptable for Construction. Correct & Resubmit for Review  
 D - Drawing on Hold

Reviewed: \_\_\_\_\_ Date: \_\_\_\_\_  
 These documents have been reviewed for conformity with design intent. Acceptance does not mean approval of dimensions, sizes or weights nor does it relieve the subcontractor and/or the Consultant from responsibility for errors, omissions or compliance with the obligations and/or requirements of the Contract and/or Subcontract.

CONSULTANTS  
**ARCHITECTS:**  
 JPR Architects Pty Ltd  
**CONTACT:**  
 Mr Brad Sharpe  
 50 Stanley Street  
 East Sydney NSW 2010



**RAC ARCHITECT:**  
 Calder Flower Architects  
**CONTACT:**  
 Mrs Lara Calder  
 Level 2, 140 Myrtle Street  
 Chippendale NSW 2008



**HERITAGE ARCHITECT:**  
 Conybear Morrison  
**CONTACT:**  
 Mrs Audrey Thomas  
 Level 1, 52-58 William St  
 East Sydney NSW 2011



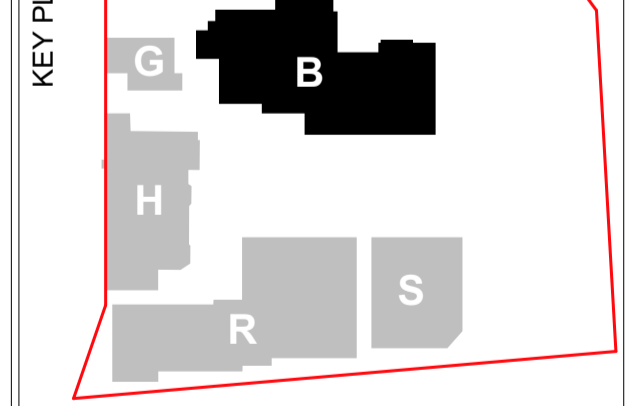
**INTERIOR DESIGN:**  
 Gilmore interior design  
**CONTACT:**  
 Mrs Lisa Agostino  
 Unit 9, 37 Nicholson Street  
 East Balmain NSW 2041



**STRUCTURAL ENGINEER**  
 TaylorThomsonWhitting  
**CONTACT:**  
 Mr Scott Nixon  
 48 Chandos Street  
 St Leonards NSW 2065



**HYDRAULIC & MECHANICAL ENGINEER:**  
 EMF Griffiths  
**CONTACT:**  
 Clayton Duckworth  
 Level 4, 204 Clarence St  
 Sydney NSW 2000

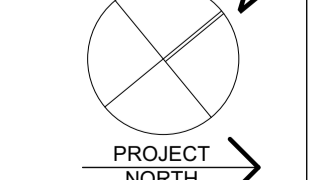


PROJECT:  
**The Terraces**  
 Seniors Living and Residential Aged Care Facility  
 74 Brown Street Paddington NSW 2021

DRAWING TITLE:  
**LEVEL 09 - ROOF PLAN - BROWN STREET BUILDING**

DOCUMENT CONTROL STATUS:  
**PRELIMINARY**

PROJECT NO:  
**2014063**  
 DRAWN BY:  
**JPR**

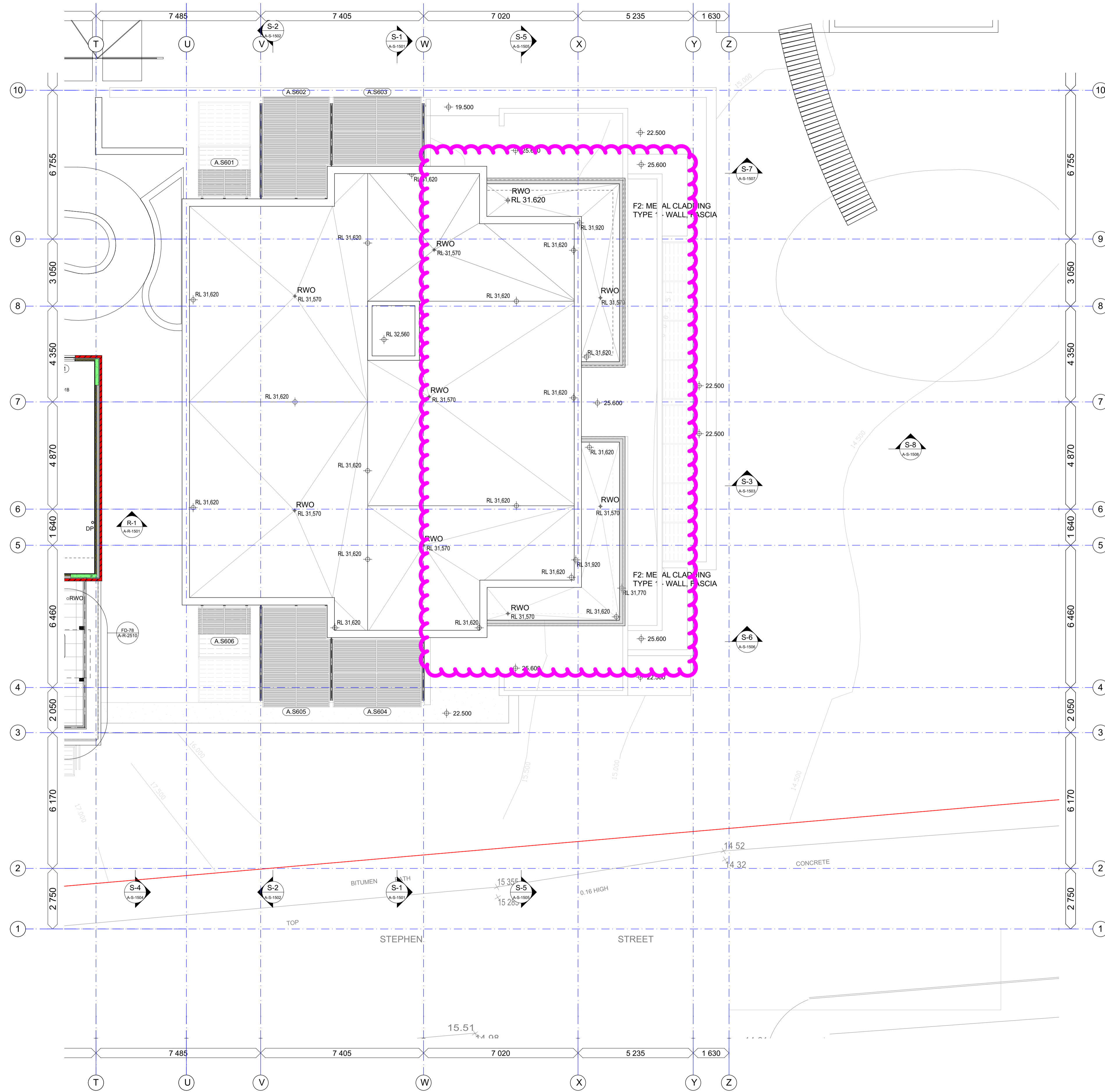


DRAWING NO:  
**A-B-1111**  
 PLOTTED: 4/3/2016

REV:  
**11**

Level 9- ROOF PLAN  
 1:100

Proposed replacement of metal roofs with concrete whilst maintaining metal facia



W A L L L E G E N D	
A1	STONE FACED WALL
A2	EXTERNAL STANDING SEAM METAL SHEETING WALL
A3	EXTERNAL FACE BRICK VENEER WALL
A4	EXTERNAL CFC WEATHERBOARD CLADDING WALL
A5	EXTERNAL BRICK VENEER - RENDERED
A6	EXTERNAL STRUCTURAL WALL FACE BRICK
A7	EXTERNAL WALL WITH COLUMN - FACE BRICK
A9	EXTERIOR DOUBLE BRICK CAVITY WALL
B1	LOAD BEARING CONCRETE WALL / COLUMN
B2	CONCRETE BLOCK WALL
C1	LOAD BEARING INTERSTAIR WALL
C2	LOAD BEARING INTER-TENANCY WALL STAIR/LIFT - ACOUSTIC SPERARATION
D2	INTER-TENANCY WALL
D3	INTER-TENANCY WALL (WET AREA)
E1	RISER WALL
E2	RISER WALL (WET AREA)
F1	INTERNAL STUD WALL
G1	HEBEL WALL

REVISIONS		
1	14/11/14	PRELIMINARY ISSUE - 1
2	20/11/14	PRELIMINARY ISSUE - 2
3	02/12/14	PRELIMINARY ISSUE - 3
4	18/12/14	PRELIMINARY ISSUE - 4 - ECI PHASE
5	13/02/15	PRELIMINARY ISSUE - 5 - ECI PHASE
6	26/02/15	PRELIMINARY ISSUE - 6 - ECI FINAL ISSUE
7	30/10/15	DOCUMENTATION UPDATE
8	02/11/15	DOCUMENTATION UPDATE
9	25/11/15	DOCUMENTATION UPDATE
10	25/02/16	FOR MASONRY PACKAGE
11	02/03/16	FOR FACADE PACKAGE

CONTRACTOR TO VERIFY ALL DIMENSIONS ON SITE PRIOR TO COMMENCING WORK. JPR IS TO BE NOTIFIED OF ANY DISCREPANCIES IN THE DIMENSION AND SETTING OUT OF THE WORK. COPYRIGHT OF DESIGNS SHOWN HEREON IS RETAINED BY JPR. AUTHORITY IS REQUIRED FOR ANY REPRODUCTION.



Presbyterian Aged Care



CLIENT:  
Brookfield Multiplex Pty Ltd  
Level 22, 135 King St  
Sydney, NSW 2000

DOCUMENT REVIEW - BROOKFIELD MULTIPLEX  
 A - Acceptable for Construction  
 B - Acceptable for Construction subject to comments. Correct & Resubmit  
 C - Unacceptable for Construction. Correct & Resubmit for Review  
 D - Drawing on Hold

Reviewed ..... Date .....  
 These documents have been reviewed for conformity with design intent. Acceptance does not mean approval of construction. JPR is to be notified of any discrepancies in the dimension and setting out of the work. Copyright of designs shown hereon is retained by JPR. Authority is required for any reproduction.

CONSULTANTS  
 ARCHITECTS:  
 JPR Architects Pty Ltd  
 CONTACT:  
 Mr Brad Sharpe  
 50 Stanley Street  
 East Sydney NSW 2010



RAC ARCHITECT:  
 Calder Flower Architects  
 CONTACT:  
 Mrs Lara Calder  
 Level 2, 140 Myrtle Street  
 Chippendale NSW 2008



HERITAGE ARCHITECT:  
 Conybeare Morrison  
 CONTACT:  
 Mrs Audrey Thomas  
 Level 1, 52-58 William St  
 East Sydney NSW 2011



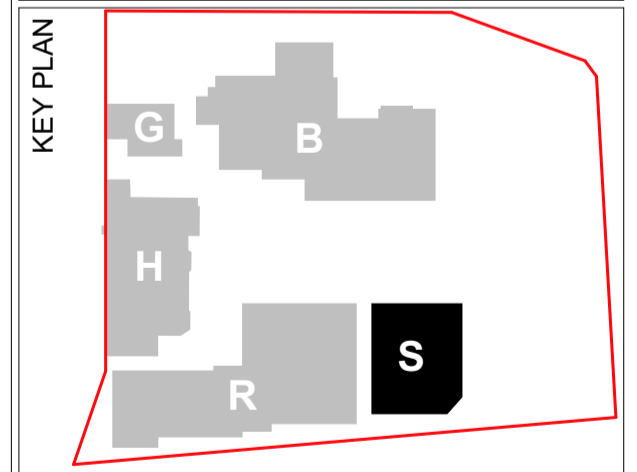
INTERIOR DESIGN:  
 Gilmore interior design  
 CONTACT:  
 Mrs Lisa Agostino  
 Unit 9, 37 Nicholson Street  
 East Balmain NSW 2041



STRUCTURAL ENGINEER  
 Taylor Thomson Whitting  
 CONTACT:  
 Mr Scott Nixon  
 48 Chandos Street  
 St Leonards NSW 2065



HYDRAULIC & MECHANICAL ENGINEER:  
 EMF Griffiths  
 CONTACT:  
 Clayton Duckworth  
 Level 4, 204 Clarence St  
 Sydney NSW 2000

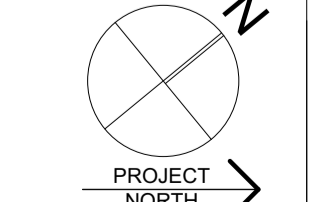


PROJECT:  
**The Terraces**  
 Seniors Living and Residential Aged Care Facility  
 74 Brown Street Paddington NSW 2021

DRAWING TITLE:  
**LEVEL 06 PLAN - STEPHEN STREET BUILDING**

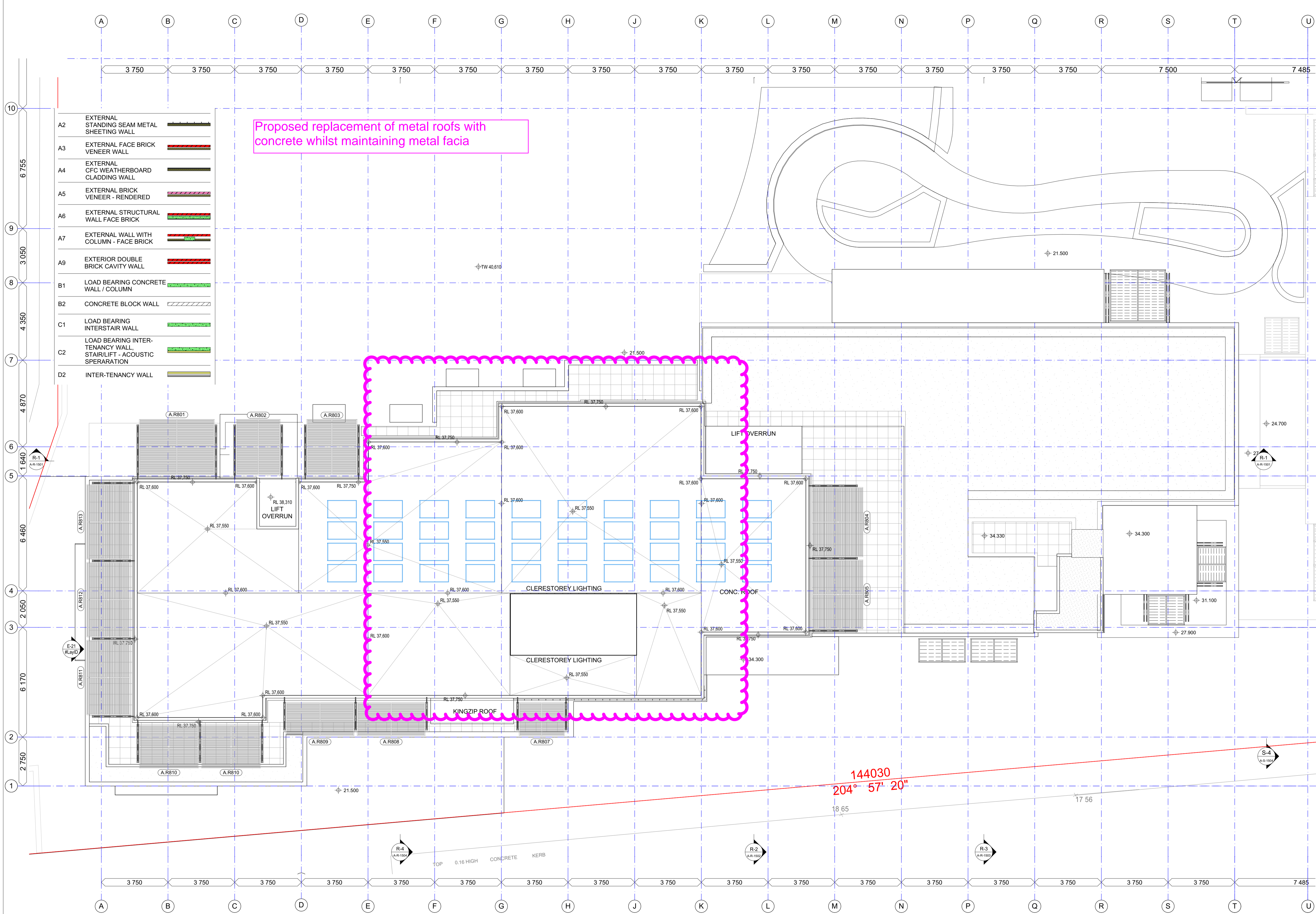
DOCUMENT CONTROL STATUS:  
**PRELIMINARY**

PROJECT NO:  
**2014063**  
 DRAWN BY:  
**JPR**



DRAWING NO:  
**A-S-1108**  
 PLOTTED: 2/03/2016

REV:  
**11**



Proposed replacement of metal roofs with concrete whilst maintaining metal facia

A2	EXTERNAL STANDING SEAM METAL SHEETING WALL
A3	EXTERNAL FACE BRICK VENEER WALL
A4	EXTERNAL CFC WEATHERBOARD CLADDING WALL
A5	EXTERNAL BRICK VENEER - RENDERED
A6	EXTERNAL STRUCTURAL WALL FACE BRICK
A7	EXTERNAL WALL WITH COLUMN - FACE BRICK
A9	EXTERIOR DOUBLE BRICK CAVITY WALL
B1	LOAD BEARING CONCRETE WALL / COLUMN
B2	CONCRETE BLOCK WALL
C1	LOAD BEARING INTERSTAIR WALL
C2	LOAD BEARING INTER-TENANCY WALL, STAIR/LIFT - ACOUSTIC SEPERATION
D2	INTER-TENANCY WALL

REVISIONS	
1	14/11/14 PRELIMINARY ISSUE - 1
2	20/11/14 PRELIMINARY ISSUE - 2
3	02/12/14 PRELIMINARY ISSUE - 3
4	18/12/14 PRELIMINARY ISSUE - 4 - ECI PHASE
5	13/02/15 PRELIMINARY ISSUE - 5 - ECI PHASE
6	26/02/15 PRELIMINARY ISSUE - 6 - ECI FINAL ISSUE
7	30/10/15 DOCUMENTATION UPDATE
9	05/11/15 DOCUMENTATION UPDATE
10	25/02/16 FOR MASONRY PACKAGE
11	02/03/16 FOR FACADE PACKAGE

CONTRACTOR TO VERIFY ALL DIMENSIONS ON SITE PRIOR TO COMMENCING WORK. JPR IS TO BE NOTIFIED OF ANY DISCREPANCIES IN THE DIMENSION AND SETTING OUT OF THE WORK. COPYRIGHT OF DESIGNS SHOWN HEREON IS RETAINED BY JPR. AUTHORITY IS REQUIRED FOR ANY REPRODUCTION.



Presbyterian Aged Care  
**Brookfield MULTIPLEX** **BM**

CLIENT:  
**Brookfield Multiplex Pty Ltd**  
 Level 22, 135 King St  
 Sydney, NSW 2000

DOCUMENT REVIEW - BROOKFIELD MULTIPLEX  
 A - Acceptable for Construction  
 B - Acceptable for Construction subject to comments. Correct & Resubmit  
 C - Unacceptable for Construction. Correct & Resubmit for Review  
 D - Drawing on Hold

Reviewed: \_\_\_\_\_ Date: \_\_\_\_\_  
 These documents have been reviewed for conformity with design intent. Acceptance does not mean approval of dimensions, sizes or weights nor does it relieve the subcontractor and/or the Consultant from responsibility for errors, omissions or compliance with the obligations and/or requirements of the Contract and/or Subcontract.

CONSULTANTS  
**ARCHITECTS:**  
 JPR Architects Pty Ltd  
**CONTACT:**  
 Mr Brad Sharpe  
 50 Stanley Street  
 East Sydney NSW 2010



**RAC ARCHITECT:**  
 Calder Flower Architects  
**CONTACT:**  
 Mrs Lara Calder  
 Level 2, 140 Myrtle Street  
 Chippendale NSW 2008



**HERITAGE ARCHITECT:**  
 Conybeare Morrison  
**CONTACT:**  
 Mrs Audrey Thomas  
 Level 1, 52-58 William St  
 East Sydney NSW 2011



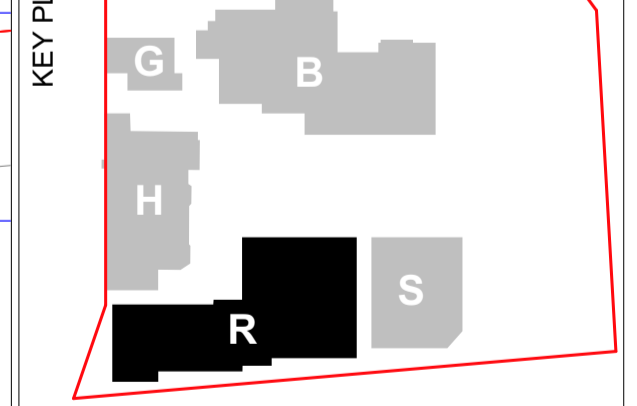
**INTERIOR DESIGN:**  
 Gilmore interior design  
**CONTACT:**  
 Mrs Lisa Augustino  
 Unit 9, 37 Nicholson Street  
 East Balmain NSW 2041



**STRUCTURAL ENGINEER**  
 TaylorThomsonWhitting  
**CONTACT:**  
 Mr Scott Nixon  
 48 Chandos Street  
 St Leonards NSW 2065



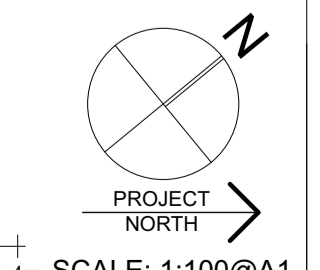
**HYDRAULIC & MECHANICAL ENGINEER:**  
 EMF Griffiths  
**CONTACT:**  
 Clayton Duckworth  
 Level 4, 204 Clarence St  
 Sydney NSW 2000



144030  
 204° 57' 20"

PROJECT:  
**The Terraces**  
 Seniors Living and Residential Aged Care Facility  
 74 Brown Street Paddington NSW 2021  
 DRAWING TITLE:  
**LEVEL 08 - ROOF PLAN - RACF**

DOCUMENT CONTROL STATUS:  
**PRELIMINARY**  
 PROJECT NO:  
**2014063**  
 DRAWN BY:  
**JPR**  
 DRAWING NO:  
**A-R-1110**  
 PLOTTED: 2/03/2016  
 REV:  
**11**



SCALE: 1:100@A1

Proposed replacement of metal roofs with concrete whilst maintaining metal facia



East- Brown Street Elevation

BM: Metal cladding slab edge capping approach maintained



East- Brown Street Perspective

F1	DRY PACK STONE WALL
F2	METAL CLADDING TYPE 1 - WALL, FASCIA
F3	FACE BRICKWORK
F4	METAL CLADDING TYPE 2 - INFILL PANELS
F5	RENDER AND PAINT
F7A	GLASS BALUSTRADE
F7B	STEEL RAILING
PG1	PERGOLA FRAME 1
PG1-A	PERGOLA FRAME 2
LV1	VENTILATION LOUVRE
LV2	SLIDING SUN/SECURITY LOUVRE
LV3	PRIVACY LOUVRE
LV4	WIDE BLADE SUNSCREEN
LV5	GLASS LOUVRE

REVISIONS		
1	14/11/14	PRELIMINARY ISSUE - 1
2	20/11/14	PRELIMINARY ISSUE - 2
3	02/12/14	PRELIMINARY ISSUE - 3
4	18/12/14	PRELIMINARY ISSUE - 4- ECI PHASE
5	13/02/15	PRELIMINARY ISSUE - 5- ECI PHASE
6	26/02/15	PRELIMINARY ISSUE - 6- ECI FINAL ISSUE
8	11/11/15	DOCUMENTATION UPDATE

CONTRACTOR TO VERIFY ALL DIMENSIONS ON SITE PRIOR TO COMMENCING WORK. JPR IS TO BE NOTIFIED OF ANY DISCREPANCIES IN THE DIMENSION AND SETTING OUT OF THE WORK. COPYRIGHT OF DESIGNS SHOWN HEREON IS RETAINED BY JPR. AUTHORITY IS REQUIRED FOR ANY REPRODUCTION.



Presbyterian Aged Care



CLIENT:  
Brookfield Multiplex Pty Ltd  
Level 22, 135 King St  
Sydney, NSW 2000

DOCUMENT REVIEW - BROOKFIELD MULTIPLEX  
 A - Acceptable for Construction  
 B - Acceptable for Construction subject to comments. Correct & Resubmit  
 C - Unacceptable for Construction. Correct & Resubmit for Review  
 D - Drawing on Hold

Reviewed: \_\_\_\_\_ Date: \_\_\_\_\_  
 These documents have been reviewed for conformity with design intent. Acceptance does not mean approval of dimensions, sizes or weights nor does it relieve the subcontractor and/or the Consultant from responsibility for errors, omissions or compliance with the obligations and/or requirements of the Contract and/or Subcontract.

CONSULTANTS  
 ARCHITECTS:  
 JPR Architects Pty Ltd  
 CONTACT:  
 Mr Brad Sharpe  
 50 Stanley Street  
 East Sydney NSW 2010



RAC ARCHITECT:  
 Calder Flower Architects  
 CONTACT:  
 Mrs Lara Calder  
 Level 2, 140 Myrtle Street  
 Chippendale NSW 2008



HERITAGE ARCHITECT:  
 Conybeare Morrison  
 CONTACT:  
 Mrs Audrey Thomas  
 Level 1, 52-58 William St  
 East Sydney NSW 2011



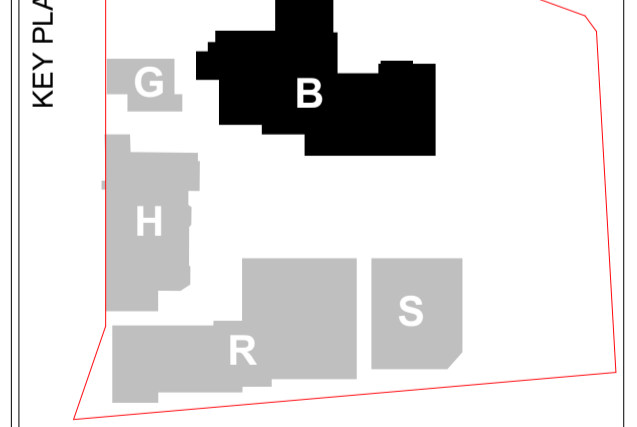
INTERIOR DESIGN:  
 Gilmore interior design  
 CONTACT:  
 Mrs Lisa Agostino  
 Unit 9, 37 Nicholson Street  
 East Balmain NSW 2041



STRUCTURAL ENGINEER  
 TaylorThomsonWhitting  
 CONTACT:  
 Mr Scott Nixon  
 48 Chandos Street  
 St Leonards NSW 2065



HYDRAULIC & MECHANICAL ENGINEER:  
 EMF Griffiths  
 CONTACT:  
 Clayton Duckworth  
 Level 4, 204 Clarence St  
 Sydney NSW 2000



PROJECT:  
**The Terraces**  
 Seniors Living and Residential Aged Care Facility  
 74 Brown Street Paddington NSW 2021

DRAWING TITLE:  
**EAST ELEVATION - BROWN STREET**

DOCUMENT CONTROL STATUS:  
**PRELIMINARY**

PROJECT NO:  
**2014063**  
 DRAWN BY:  
**JPR**

DRAWING NO:  
**A-B-1526**

REV:  
**8**  
 PLOTTED: 11/11/2015

SCALE: 1:109.45@A1

Proposed replacement of metal roofs with concrete whilst maintaining metal fascia

REVISIONS		
1	14/11/14	PRELIMINARY ISSUE- 1
2	20/11/14	PRELIMINARY ISSUE- 2
3	02/12/14	PRELIMINARY ISSUE- 3
4	18/7/14	PRELIMINARY ISSUE- 4- ECI PHASE
5	13/02/15	PRELIMINARY ISSUE- 5- ECI PHASE
6	26/02/15	PRELIMINARY ISSUE- 6- ECI FINAL ISSUE
8	11/11/15	DOCUMENTATION UPDATE

CONTRACTOR TO VERIFY ALL DIMENSIONS ON SITE PRIOR TO COMMENCING WORK. JPR IS TO BE NOTIFIED OF ANY DISCREPANCIES IN THE DIMENSION AND SETTING OUT OF THE WORK. COPYRIGHT OF DESIGNS SHOWN HEREON IS RETAINED BY JPR. AUTHORITY IS REQUIRED FOR ANY REPRODUCTION.



Presbyterian Aged Care



CLIENT:  
Brookfield Multiplex Pty Ltd  
Level 22, 135 King St  
Sydney, NSW 2000

DOCUMENT REVIEW - BROOKFIELD MULTIPLEX  
 A - Acceptable for Construction  
 B - Acceptable for Construction subject to comments. Correct & Resubmit  
 C - Unacceptable for Construction. Correct & Resubmit for Review  
 D - Drawing on Hold

Reviewed: ..... Date: .....  
 These documents have been reviewed for conformity with design intent. Acceptance does not mean approval of dimensions, sizes or weights nor does it relieve the subcontractor and/or the Consultant from responsibility for errors, omissions or compliance with the obligations and/or requirements of the Contract and/or Subcontract.

CONSULTANTS  
 ARCHITECTS:  
 JPR Architects Pty Ltd  
 CONTACT:  
 Mr Brad Sharpe  
 50 Stanley Street  
 East Sydney NSW 2010



RAC ARCHITECT:  
 Calder Flower Architects  
 CONTACT:  
 Mrs Lara Calder  
 Level 2, 140 Myrtle Street  
 Chippendale NSW 2008



HERITAGE ARCHITECT:  
 Conybeare Morrison  
 CONTACT:  
 Mrs Audrey Thomas  
 Level 1, 52-58 William St  
 East Sydney NSW 2011



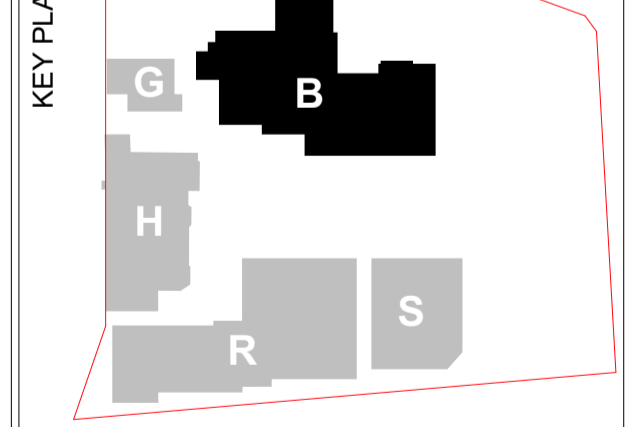
INTERIOR DESIGN:  
 Gilmore interior design  
 CONTACT:  
 Mrs Lisa Agostino  
 Unit 9, 37 Nicholson Street  
 East Balmain NSW 2041



STRUCTURAL ENGINEER  
 TaylorThomsonWhitting  
 CONTACT:  
 Mr Scott Nixon  
 48 Chandos Street  
 St Leonards NSW 2065



HYDRAULIC & MECHANICAL ENGINEER:  
 EMF Griffiths  
 CONTACT:  
 Clayton Duckworth  
 Level 4, 204 Clarence St  
 Sydney NSW 2000



PROJECT:  
**The Terraces**  
 Seniors Living and Residential Aged Care Facility  
 74 Brown Street Paddington NSW 2021

DRAWING TITLE:  
**WEST ELEVATION - BROWN STREET**

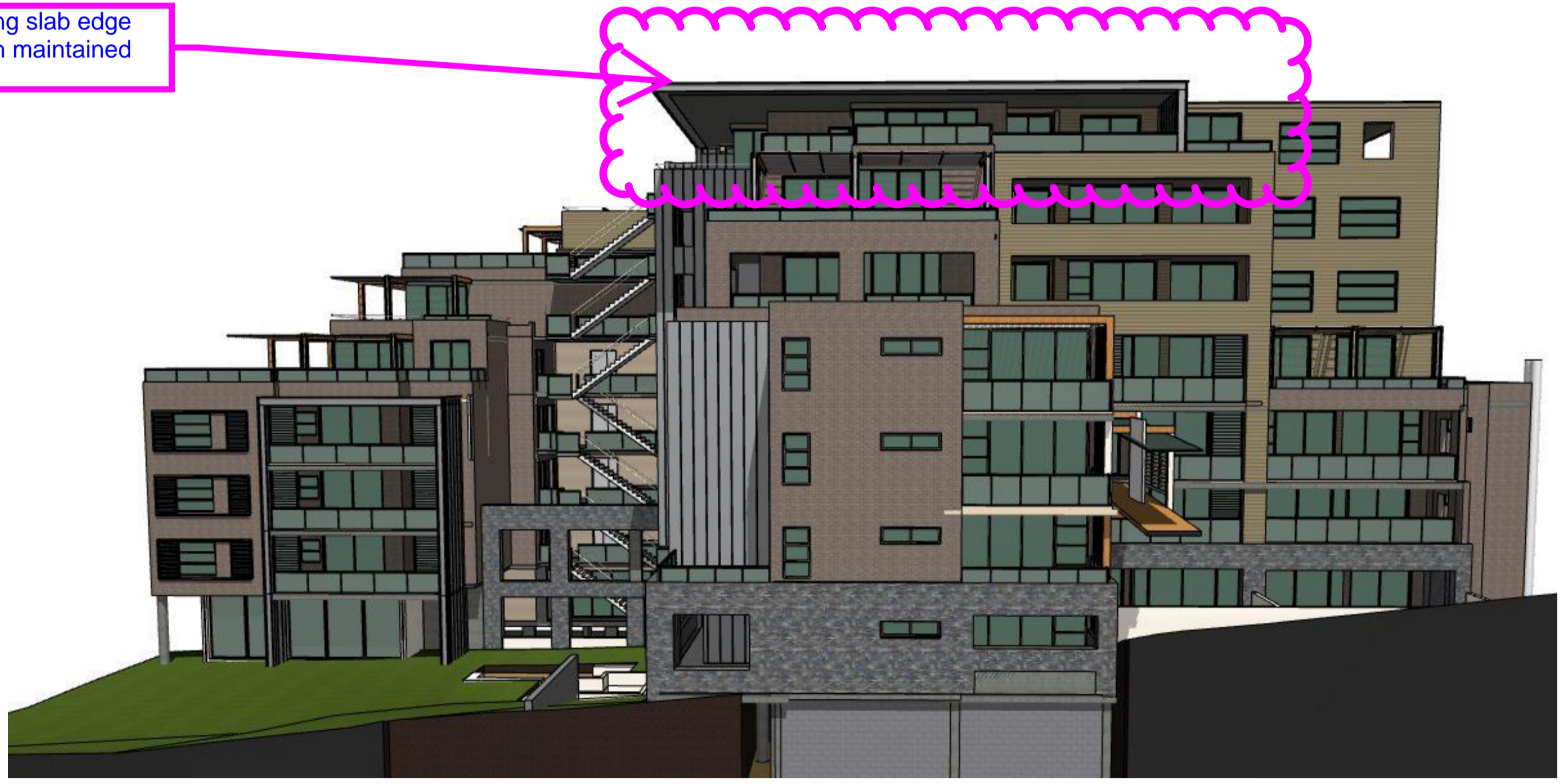
DOCUMENT CONTROL STATUS:  
**PRELIMINARY**

PROJECT NO:  
**2014063**  
 DRAWN BY:  
**JPR**

DRAWING NO:  
**A-B-1528**  
 SCALE: 1:90.81m:118.48, 1:100@A1  
 REV: **8**  
 PLOTTED: 11/11/2015

West- Brown Street Elevation

BM: Metal cladding slab edge capping approach maintained

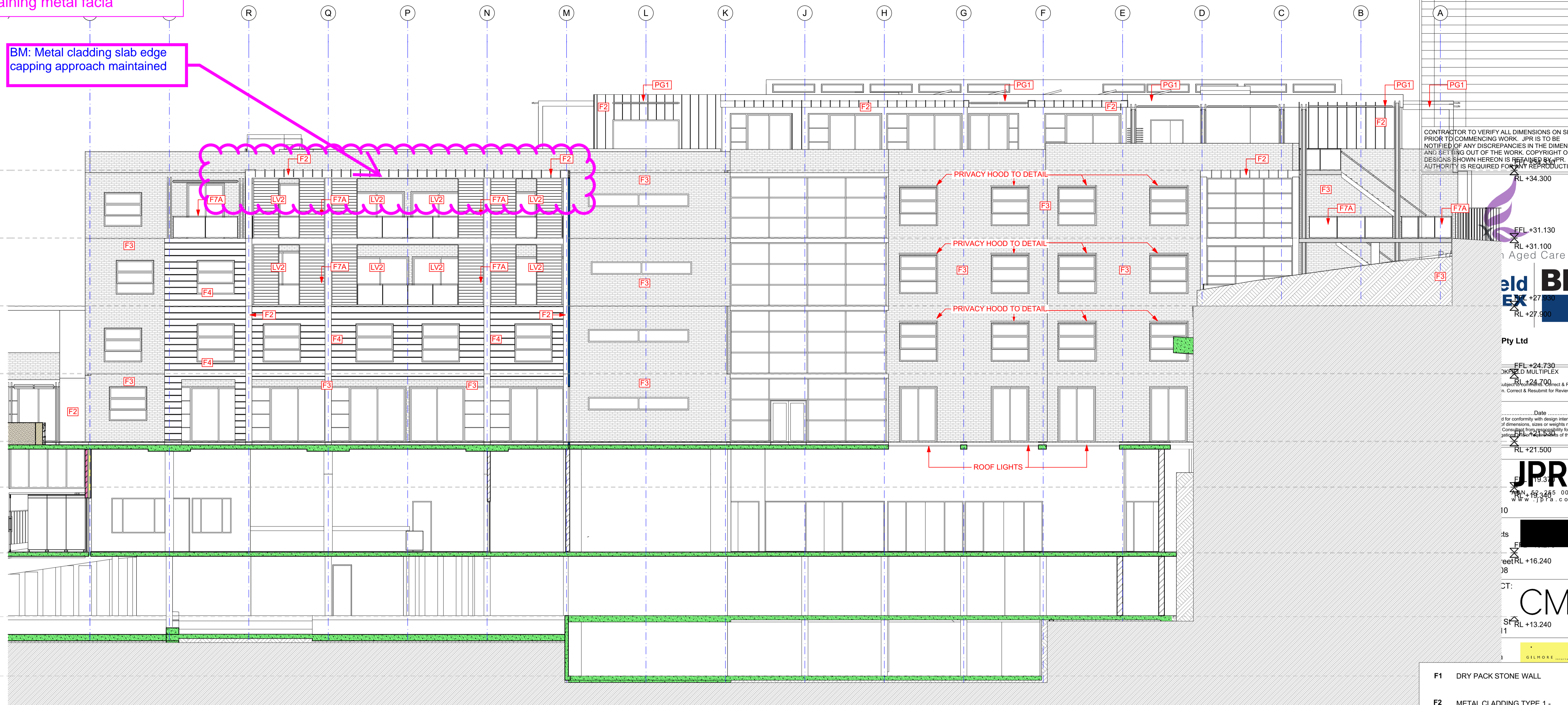


- F1 DRY PACK STONE WALL
- F2 METAL CLADDING TYPE 1 - WALL, FASCIA
- F3 FACE BRICKWORK
- F4 METAL CLADDING TYPE 2 - INFILL PANELS
- F5 RENDER AND PAINT
- F7A GLASS BALUSTRADE
- F7B STEEL RAILING
- PG1 PERGOLA FRAME 1
- PG1-A PERGOLA FRAME 2
- LV1 VENTILATION LOUVRE
- LV2 SLIDING SUN/SECURITY LOUVRE
- LV3 PRIVACY LOUVRE
- LV4 WIDE BLADE SUNSCREEN
- LV5 GLASS LOUVRE

West Brown Street Perspective

Proposed replacement of metal roofs with concrete whilst maintaining metal fascia

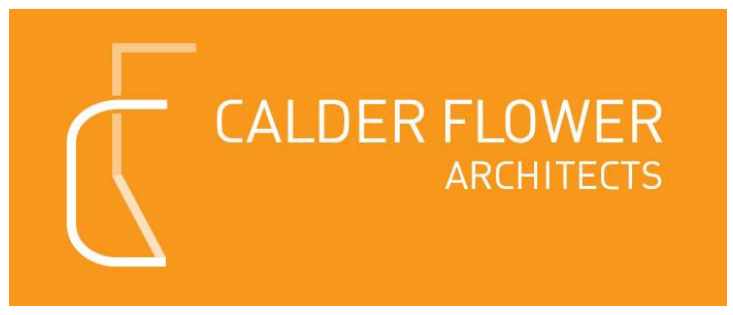
BM: Metal cladding slab edge capping approach maintained



West RACF Elevation  
1:100



West RACF Perspective



REVISIONS	
A	

CONTRACTOR TO VERIFY ALL DIMENSIONS ON SITE PRIOR TO COMMENCING WORK. JPR IS TO BE NOTIFIED OF ANY DISCREPANCIES IN THE DIMENSION AND SETTING OUT OF THE WORK. COPYRIGHT OF DESIGNS SHOWN HEREON IS RETAINED BY JPR. AUTHORITY IS REQUIRED FOR ANY REPRODUCTION.

Old BM  
EX  
Pty Ltd

Old BM  
EX  
Pty Ltd

Old BM  
EX  
Pty Ltd

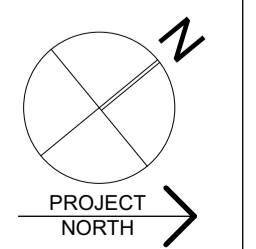
JPR  
www.jpra.com.au

CM+

- F1 DRY PACK STONE WALL
- F2 METAL CLADDING TYPE 1 - WALL, FASCIA
- F3 FACE BRICKWORK
- F4 METAL CLADDING TYPE 2 - INFILL PANELS
- F5 RENDER AND PAINT
- F7A GLASS BALUSTRADE
- F7B STEEL RAILING
- PG1 PERGOLA FRAME 1
- PG1-A PERGOLA FRAME 2
- LV1 VENTILATION LOUVRE
- LV2 SLIDING SUN/SECURITY LOUVRE
- LV3 PRIVACY LOUVRE
- LV4 WIDE BLADE SUNSCREEN
- LV5 GLASS LOUVRE

DOCUMENT CONTROL STATUS:

TEMPORARY PROJECTIONS: 1:100, 1:117.08, 1:2.59@A1  
2014063



DRAWING NO:  
**A-R-1527**  
PLOTTED: 30/10/2015