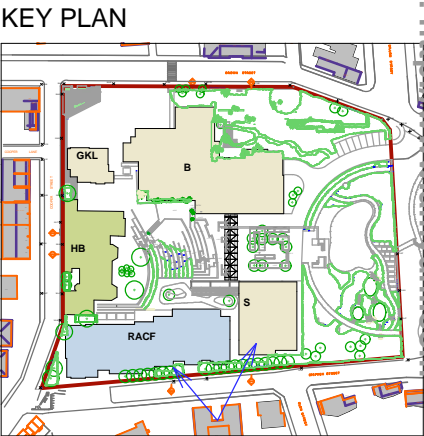




Existing
View 4 - Stephen St



Proposed
View 4 - Stephen St



"Copyright JPR Architects Pty Ltd.
Reproduction of the whole or part of this documents constitutes
an infringement of copyright. The information, ideas and
concepts contained in this document are confidential and the
recipient of this document is prohibited from disclosing such
information, ideas and concepts to any person without the
prior written consent of JPR Architects Pty Ltd."

"THE TERRACES"

SCOTTISH HOSPITAL - 2 COOPER ST. PADDINGTON

PRINCIPAL ARCHITECT



j p r architects pty limited
20/50 Stanley Street East Sydney NSW 2010 tel +61 2 9366 1133 fax +61 2 9366 1166 email jpr@jpra.com.au

CONSULTING ARCHITECT: URBAN DESIGN



GMU GM Urban Design + Architecture Pty Ltd

CONSULTING ARCHITECT: AGED CARE



Flower and Samios
architects

CONSULTING ARCHITECT: HERITAGE



CM+ Conybeare Morrison International Pty Ltd
Architecture Interiors Heritage Urban Design Masterplanning
T: 61 2 8244 8888 F: 61 2 8244 8877 E: mail@cmplus.com.au
©CM+ 2010

SCALE AT A3
NTS

REVISION
B

DATE
07/10/2010

DRAWN
RM / YS/ RK

PROJECT No
2006067

ITEM No
37706

FOR MAJOR PROJECT APPLICATION ONLY

CAUTION: Drawings which have been scanned, saved in PDF format, and/or reprinted, other than by JPR, may not be to scale and should not be scaled or relied on for area calculations.

This design has had no input from relevant planning and services or BCA consultants and should not be construed as final

PROJECT ADDRESS
2 COOPER ST. PADDINGTON

CLIENT
Presbyterian Aged Care PADDINGTON

DRAWING TITLE
View 4- Stephen St

DRAWING No
DA 604

This file was generated with an evaluation version of the Amyuni(r) PDF Converter : <http://www.amyuni.com>

3D image updated to reflect reduced
bulk of RACF building at north east
corner

Rev B 06/06/2011