



Detail Plan 4 - Scottish Hospital [1:100]

Legend

- a. Final feature of connective water element.
- b. Social seating terminates plaza area and creates entry definition to the parkland area.
- c. Timber deck walk protecting tree roots and defining park area.
- d. Colourful buffer planting defines entry and park edge.
- e. Existing grand tree specimens are retained and enhanced with low ornamental plants.
- f. Secondary recreation path.
- g. Communal raised hobby garden and vegetable plots.
- h. Recreational exercise areas.
- i. Gated access to Dillon Reserve.
- j. Low, dense planted areas create buffers and visually enhance existing vegetation and spaces.
- k. Central, open lawn area.





Legend

- A. Light screen planting of traditional specimens to define private courtyards.
- B. Traditional garden terracing reinstated to display heritage garden species and define primary use areas. Retain existing sandstone wall and concrete stairs to extent shown. Heritage sandstone stairs to be reinstated to proposed setout.
- C. Pick up/ drop off and passive recreation area with extensive garden planting and seating area opportunities adjacent to covered walkway.
- D. Middle link garden to lower park areas. Low gradient ramp access, sensory planting and 'sanctuary' seating areas amongst low raised planters, small flowering trees and reflection pool.
- E. Entry to park area set out to bookend the middle garden area and establishing long north south views through the site.
- F. Main open sun lawn area.
- G. Site community interactive hobby garden plots.
- H. Exercise and wandering areas set amongst ornamental planting, exercise equipment and seating areas.
- I. Timber and gravel circuit path addressing grand existing trees providing a link from the middle garden area to the boundary gate and adjoining park area.
- J. T116 removed and replaced with advanced *Ficus rubiginosa*
- K. Replace existing weed tree species with fast growing, advanced native screen tree stock. Retain existing mature screen trees where appropriate. Complement with native planted under storey.
- L. Low native planting to courtyard area and vigorous flowering native climbing plants to cable or steel mesh system on adjacent wall face.
- M. Retain existing ground levels to protect existing *Quercus ilex* (Holm Oak), including reinstatement of existing stone retaining structure adjacent to this tree (shown indicatively).
- N. Public pocket park allows greater surveillance across this corner and a safe waiting area for public. Timber deck as primary ground plane protects existing trees from compaction and a level link to a ramp access system from within the hospital site. Multiple seating opportunities are set back from the street among large planted beds and recycled sandstone elements.
- O. Existing banks are proposed to be intensively re vegetated with low growing locally native species after removal of invasive herbaceous plants such as *Lantana* and *Tradescantia*.
- P. Planted roof terraces provide passive recreational areas looking towards adjoining tree canopies.
- Q. Spa deck and garden area provides summer respite area setout around large existing tree (deck protects tree against compaction) Seating and picnic table are built into deck and ornamental garden beds define the area against the greater planted embankment. Refer to project architect for overhead walkway link to Brown Street. Tree 116 to be replaced with advanced *Ficus rubiginosa*.
- R. Retain and protect existing trees.
- S. Colour defined entry and middle garden area paving ensures pedestrian priority and traffic calming.
- T. Entry areas intensively planted with ornamental species and access defined to adjoining park areas and pedestrian safety access.
- U. Entry link to passive recreation terrace areas from ILU building.
- V. Entry link to dementia lawn and sensory gardens passive recreation lawn from adjoining building.
- W. Planted roof and balcony areas.
- X. Indicative location for pump room.

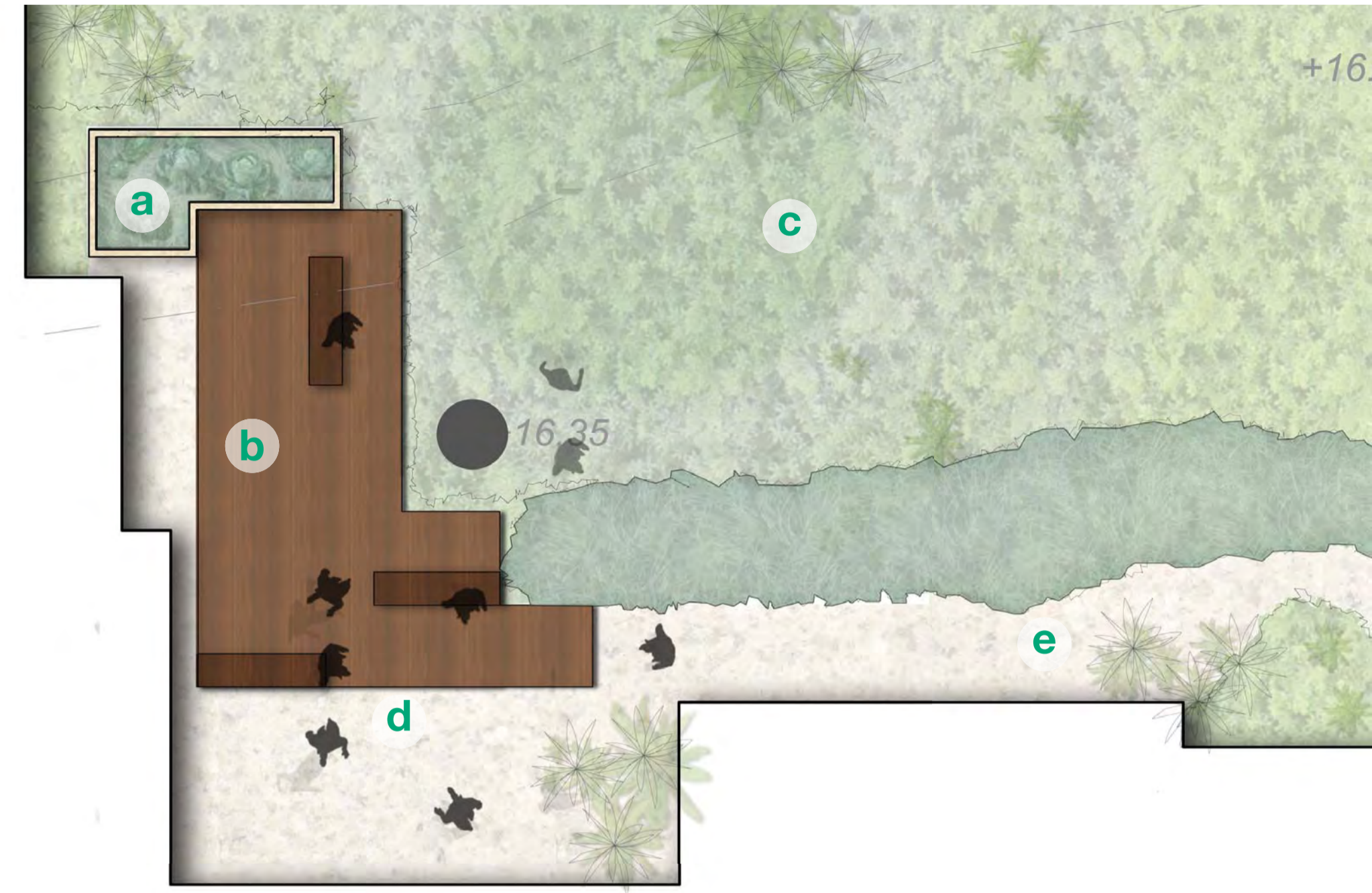




Legend

- a. Ornamental low growing planted beds
- b. Timber benches and stairs adjoining deck area
- c. Deck cut around existing tree
- d. Access ramp at 1:14 with landings and security gate
- e. Pallisade fence on sandstone block wall
- f. Sandstone bench seating
- g. Security gate

Detail Plan 1 - Cooper Street - Brown Street Interface [1:100]



Detail Plan 2 - Brown Street Link [1:100]

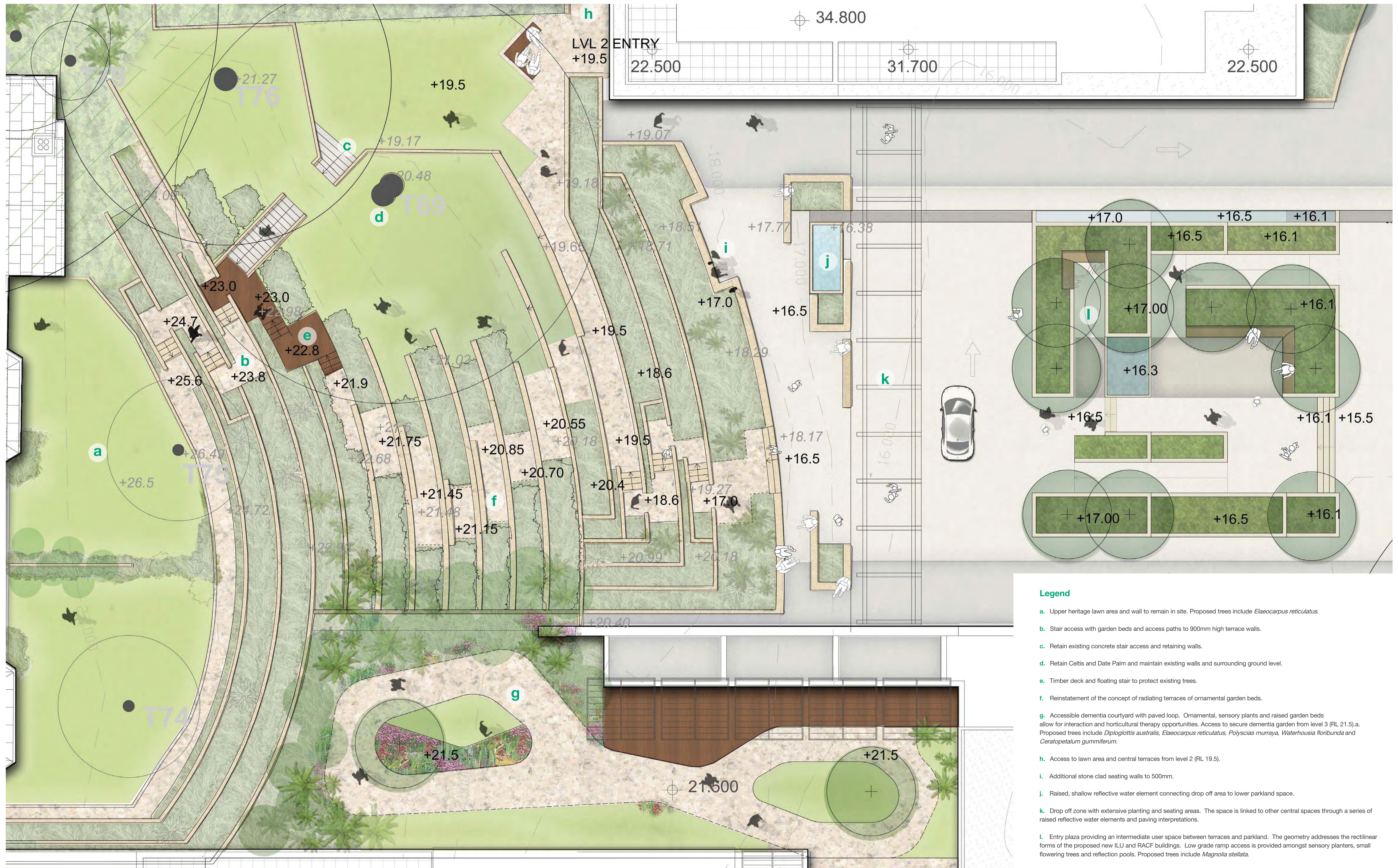
Legend

- a. Ornamental planting beds to low raised stone clad planters.
- b. Timber deck with social seating raised over tree root zone.
- c. Low growing native planting to embankment.
- d. Compacted Gravel on permeable paved path access.
- e. Informal maintenance path.



Section 1 - Cooper Street - Brown Street Public Open Space





- Legend**
- a. Upper heritage lawn area and wall to remain in site. Proposed trees include *Elaeocarpus reticulatus*.
 - b. Stair access with garden beds and access paths to 900mm high terrace walls.
 - c. Retain existing concrete stair access and retaining walls.
 - d. Retain Celtis and Date Palm and maintain existing walls and surrounding ground level.
 - e. Timber deck and floating stair to protect existing trees.
 - f. Reinstatement of the concept of radiating terraces of ornamental garden beds.
 - g. Accessible dementia courtyard with paved loop. Ornamental, sensory plants and raised garden beds allow for interaction and horticultural therapy opportunities. Access to secure dementia garden from level 3 (RL 21.5).a. Proposed trees include *Diploglottis australis*, *Elaeocarpus reticulatus*, *Polyscias murraya*, *Waterhousia floribunda* and *Ceratopetalum gummiferum*.
 - h. Access to lawn area and central terraces from level 2 (RL 19.5).
 - i. Additional stone clad seating walls to 500mm.
 - j. Raised, shallow reflective water element connecting drop off area to lower parkland space.
 - k. Drop off zone with extensive planting and seating areas. The space is linked to other central spaces through a series of raised reflective water elements and paving interpretations.
 - l. Entry plaza providing an intermediate user space between terraces and parkland. The geometry addresses the rectilinear forms of the proposed new ILU and RACF buildings. Low grade ramp access is provided amongst sensory planters, small flowering trees and reflection pools. Proposed trees include *Magnolia stellata*.

Detail Plan 3 - Terraces and Entry Plaza [1:100]

