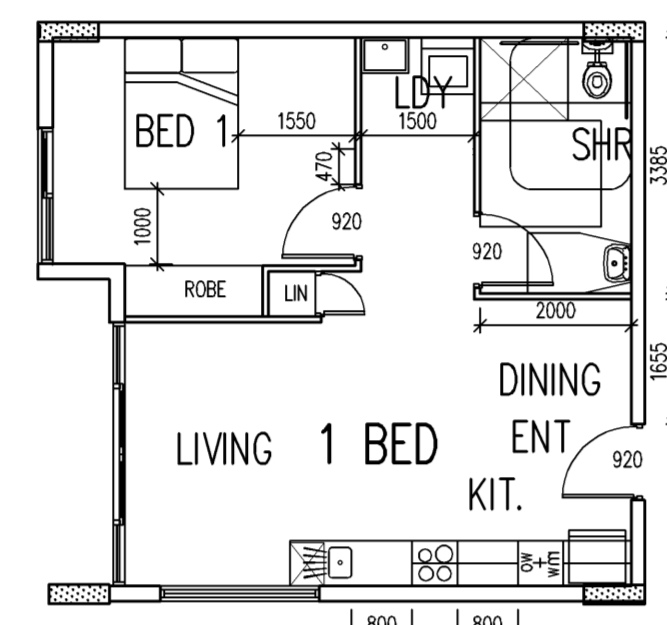
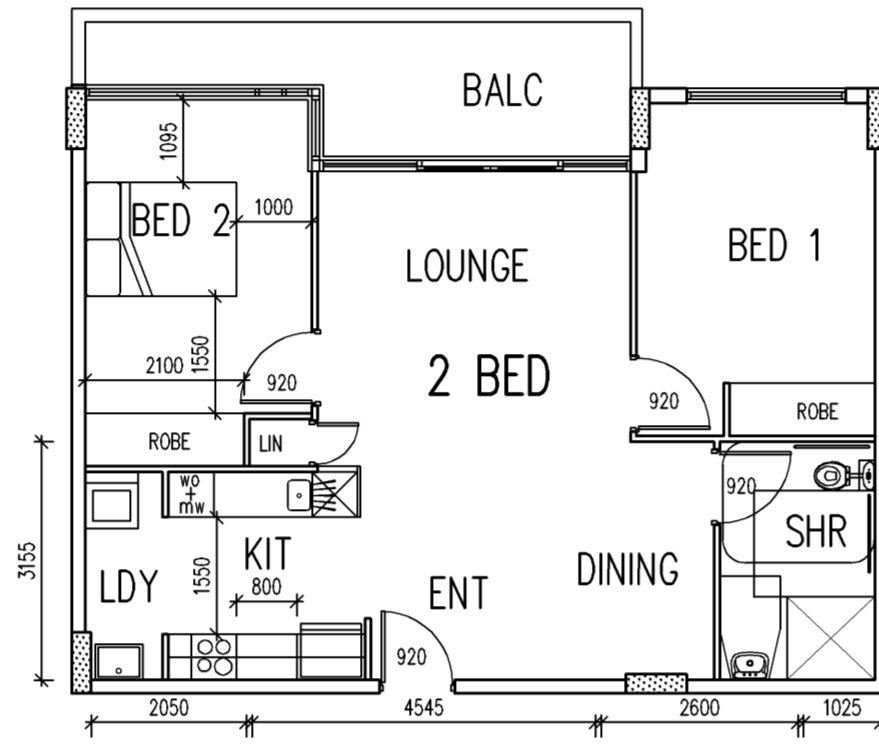


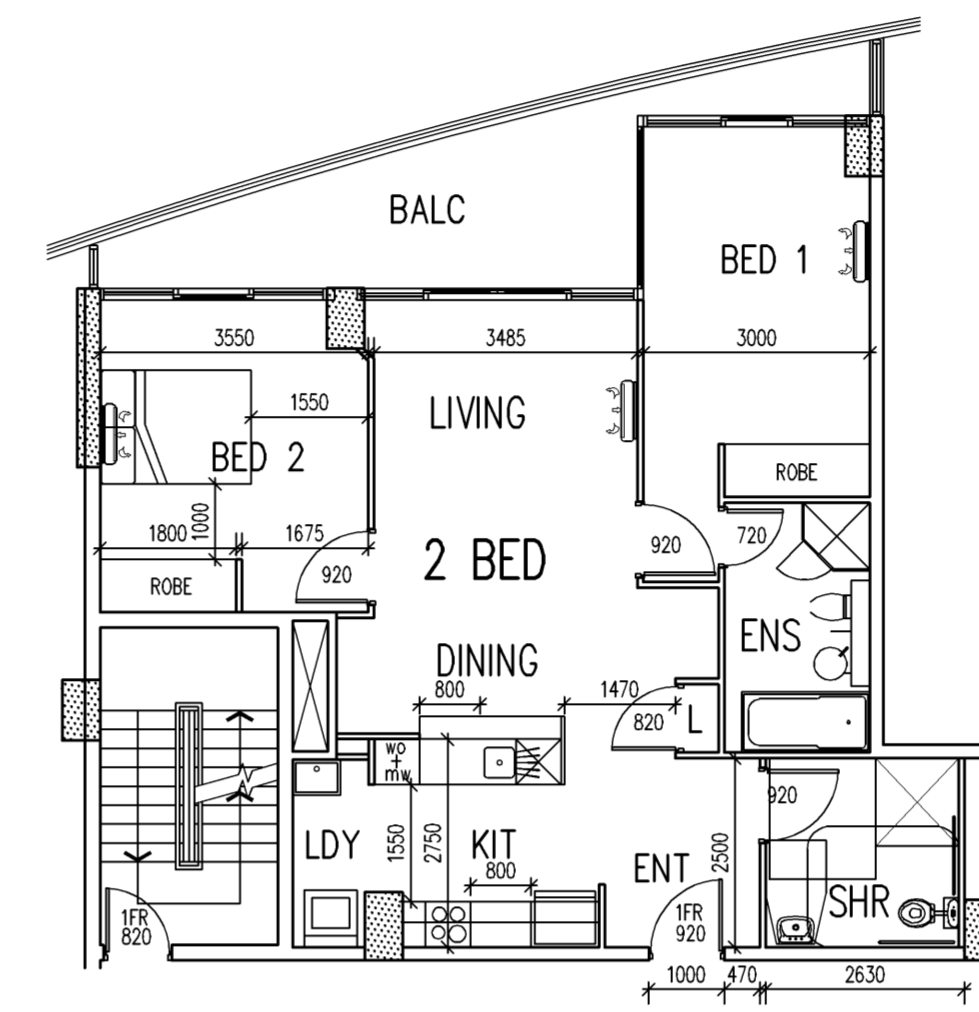
"ADAPTED UNIT"
BLOCK A: 208,308,408,508,607,707,807,907,1007
1107,1207,1307,1407,1507,1607,1707,1807
1907,2007,2107,2207,2307



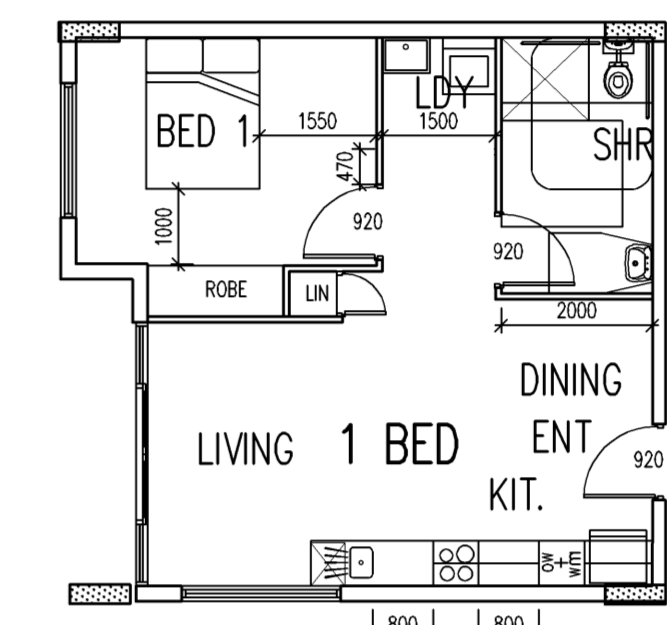
"ADAPTED UNIT"
BLOCK B: G14,111,114



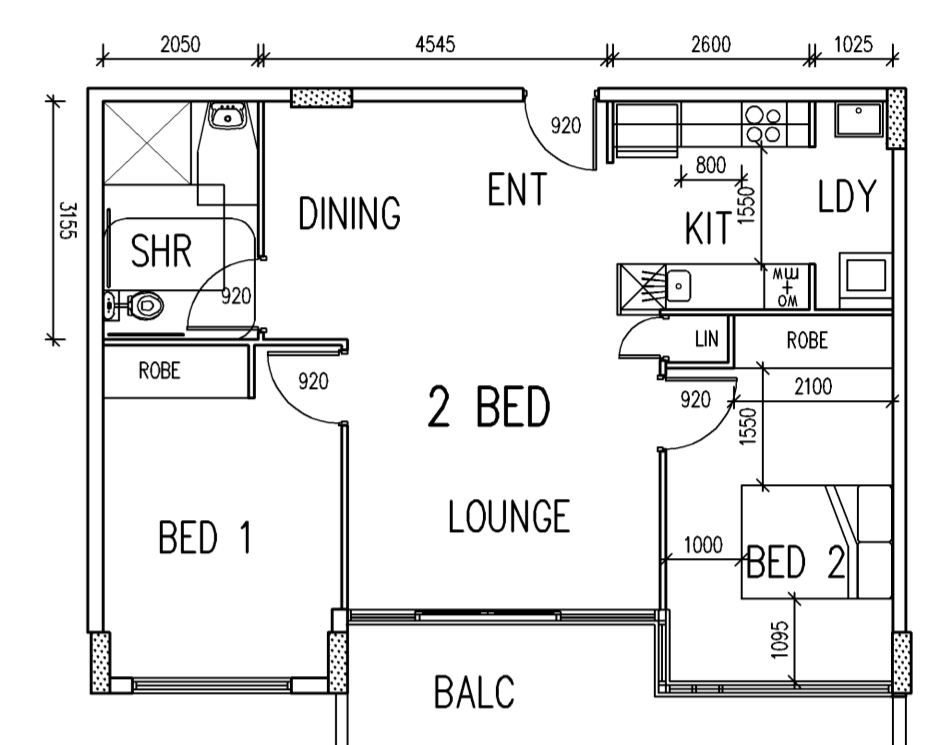
"ADAPTED UNIT"
BLOCK B: G17,G18,G19,117,118,119,120
217,218,219,220,317,318,319
320



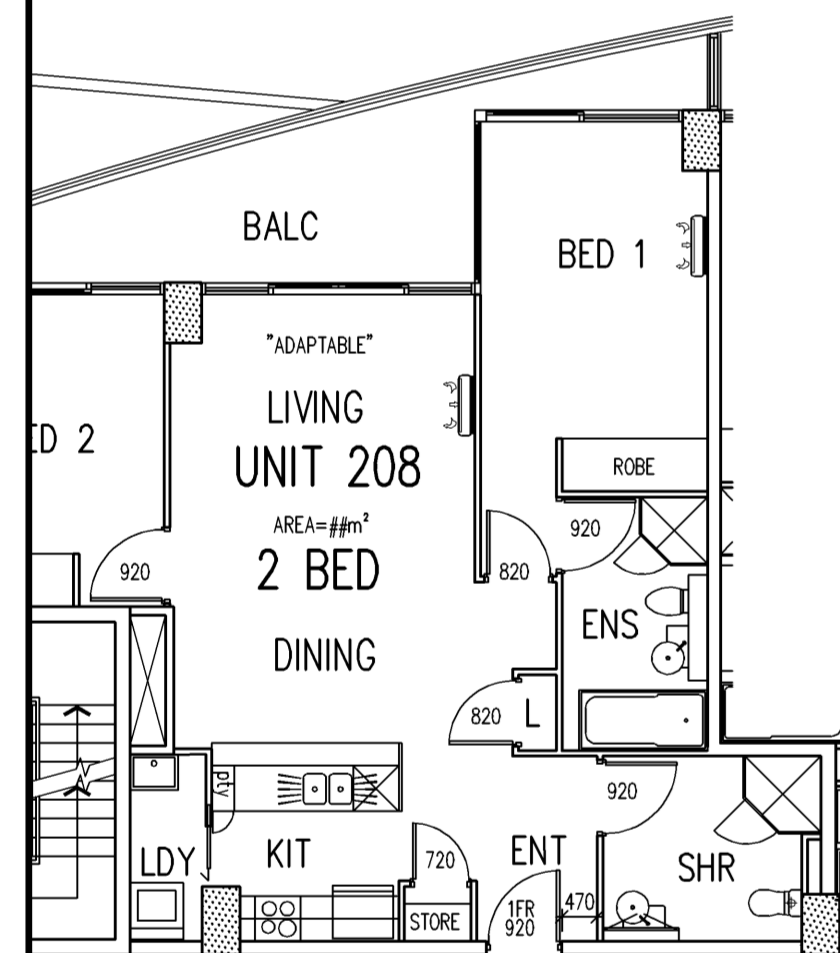
"ADAPTED UNIT"
BLOCK C: G08,108,208,308,408,508,607,707,807
907,1007,1107,1207,1307,1407,1507,1607
1707,1807,1907,2007,2107,2207



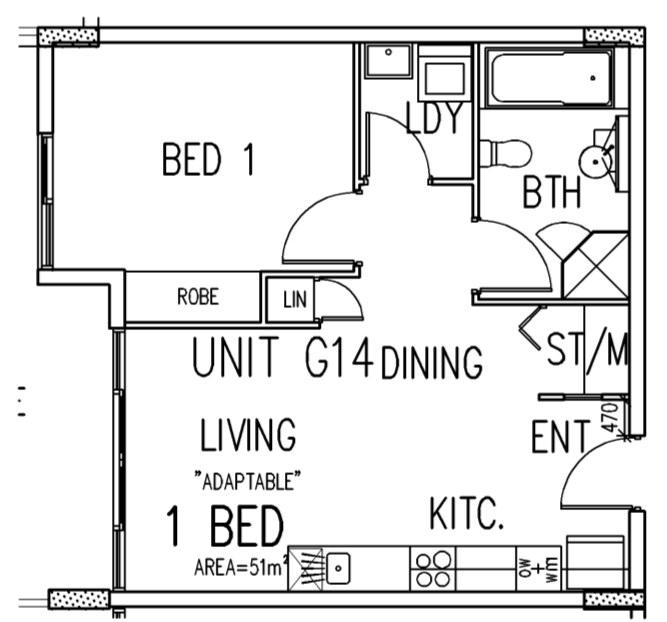
"ADAPTED UNIT"
BLOCK D: G12,G15,115,215,415
417,422,517,522



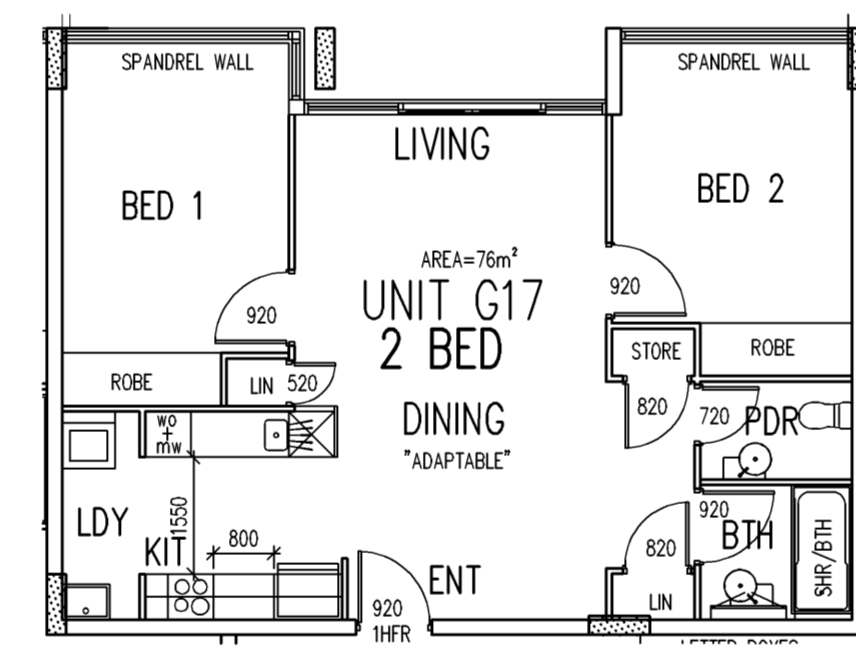
"ADAPTED UNIT"
BLOCK D: G12,G15,115,215,415
315,515



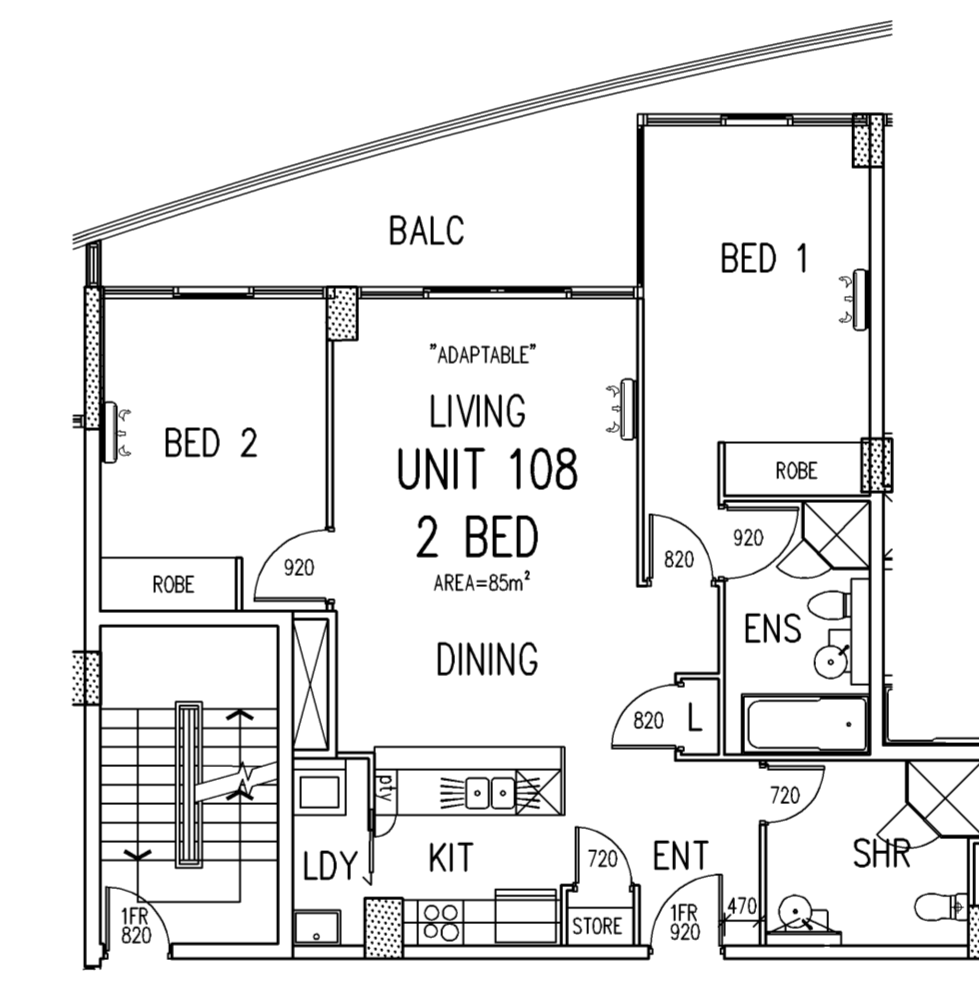
"BEFORE ADAPTATION"
BLOCK A: 208,308,408,508,607,707,807,907,1007
1107,1207,1307,1407,1507,1607,1707,1807
1907,2007,2107,2207,2307



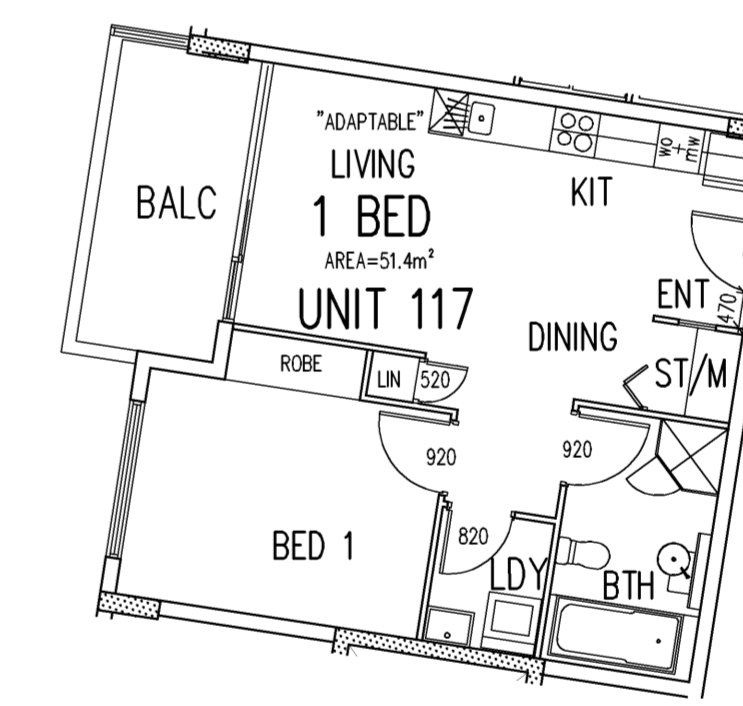
"BEFORE ADAPTATION"
BLOCK B: G14,111,114



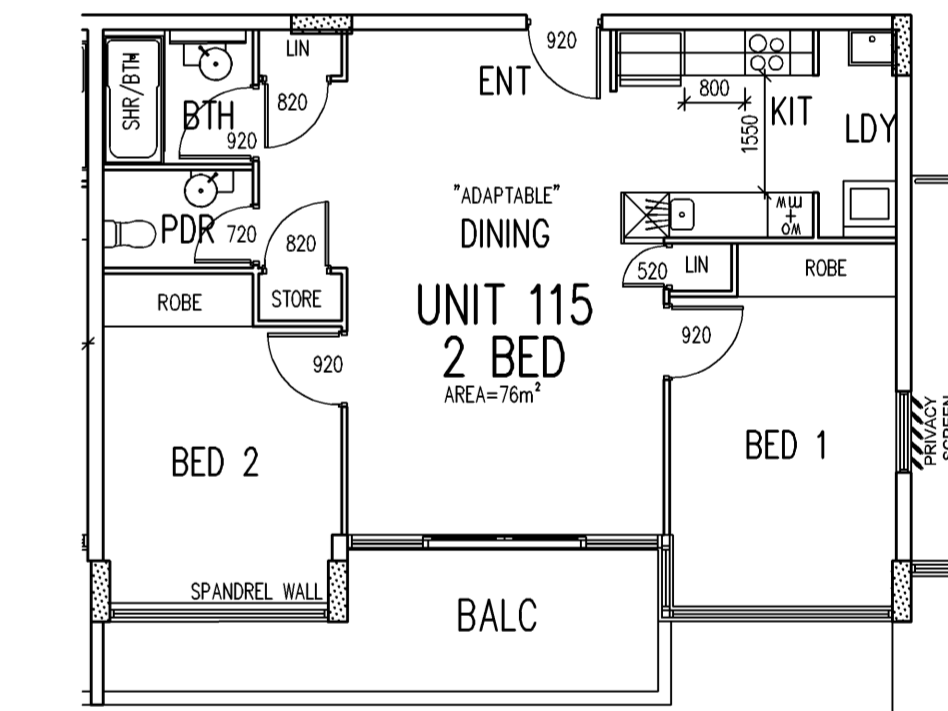
"BEFORE ADAPTATION"
BLOCK B: G17,G18,G19,117,118,119,120
217,218,219,220,317,318,319
320



"BEFORE ADAPTATION"
BLOCK C: G08,108,208,308,408,508,607,707,807
907,1007,1107,1207,1307,1407,1507,1607
1707,1807,1907,2007,2107,2207



"BEFORE ADAPTATION"
BLOCK D: G12,G15,115,215,415
417,422,517,522



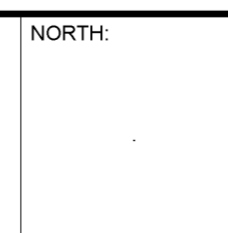
"BEFORE ADAPTATION"
BLOCK D: G12,G15,115,215,415
315,515

ADAPTABLE UNITS SHEET 1

SCALE 1:100

ISSUE	DATE	REVISION	BY	ISSUE	DATE	REVISION	BY
A	14.09.10	ISSUE FOR DEVELOPMENT APPLICATION	AJH				

DO NOT SCALE.
USE FIGURED DIMENSIONS AT ALL TIMES. IF IN DOUBT CHECK WITH MERITON APARTMENTS PTY. LTD. CONTRACTORS TO CHECK AND VERIFY ALL LEVELS, DATINGS AND DIMENSIONS ON SITE AND SHALL REPORT ANY DISCREPANCIES OR OMISSIONS TO MERITON APARTMENTS PTY. LTD. PRIOR TO COMMENCEMENT OF WORK AND DURING THE CONSTRUCTION PHASE.



GENERAL NOTES:
THIS DRAWING IS THE EXCLUSIVE PROPERTY OF MERITON APARTMENTS PTY. LTD. AND THE REPRODUCTION OF ANY PART WITHOUT THE PRIOR WRITTEN CONSENT OF MERITON APARTMENTS PTY. LTD. IS A VIOLATION OF APPLICABLE LAWS. IN NO EVENT SHALL MERITON APARTMENTS PTY. LTD. BE HELD LIABLE FOR SPECIAL, COLLATERAL, INCIDENTAL OR CONSEQUENTIAL LIABILITY IN CONNECTION WITH THE USE OF THIS DIGITAL DATA ONCE RELEASED FROM THE MERITON APARTMENTS PTY. LTD. OFFICES.
THIS DRAWING IS TO BE READ AND UNDERSTOOD IN CONJUNCTION WITH THE STRUCTURAL, MECHANICAL, ELECTRICAL AND / OR ANY OTHER CONSULTANTS DOCUMENTATION AS MAY BE APPLICABLE TO THE PROJECT PRIOR TO THE START OF ANY WORKS AND FOR ITS DURATION.

Meriton
Apartments Pty. Ltd.
Builders & Developers

267-277 Castlemeagh Street, Sydney NSW 2000
Tel: (02) 92541177 Fax: (02) 92541402 Email: info@meriton.com.au
Internet: <http://www.meriton.com.au>

PROJECT:
PROPOSED RESIDENTIAL DEVELOPMENT
LOT 101 AND 102
52 WALKER STREET
RHODES, NSW XX

DRAWING TITLE:
ADAPTABLE UNITS SHEET 1

PROJECT No.	DATE	DRAWING No.	REV.
749 & 750	9/15/2010	DA-120	A
DRAWN BY: AH	SCALE: AS SHOWN		

CAD FILE:
S:\VC-WALKER\ARCH\LOT-101-102-AMENDED-DA-NOT-LOGGED-AUG-2010\LOT-101 AND 102\DA-120.A