

SHORELINE

AVENUE

NINA GREY AVENUE

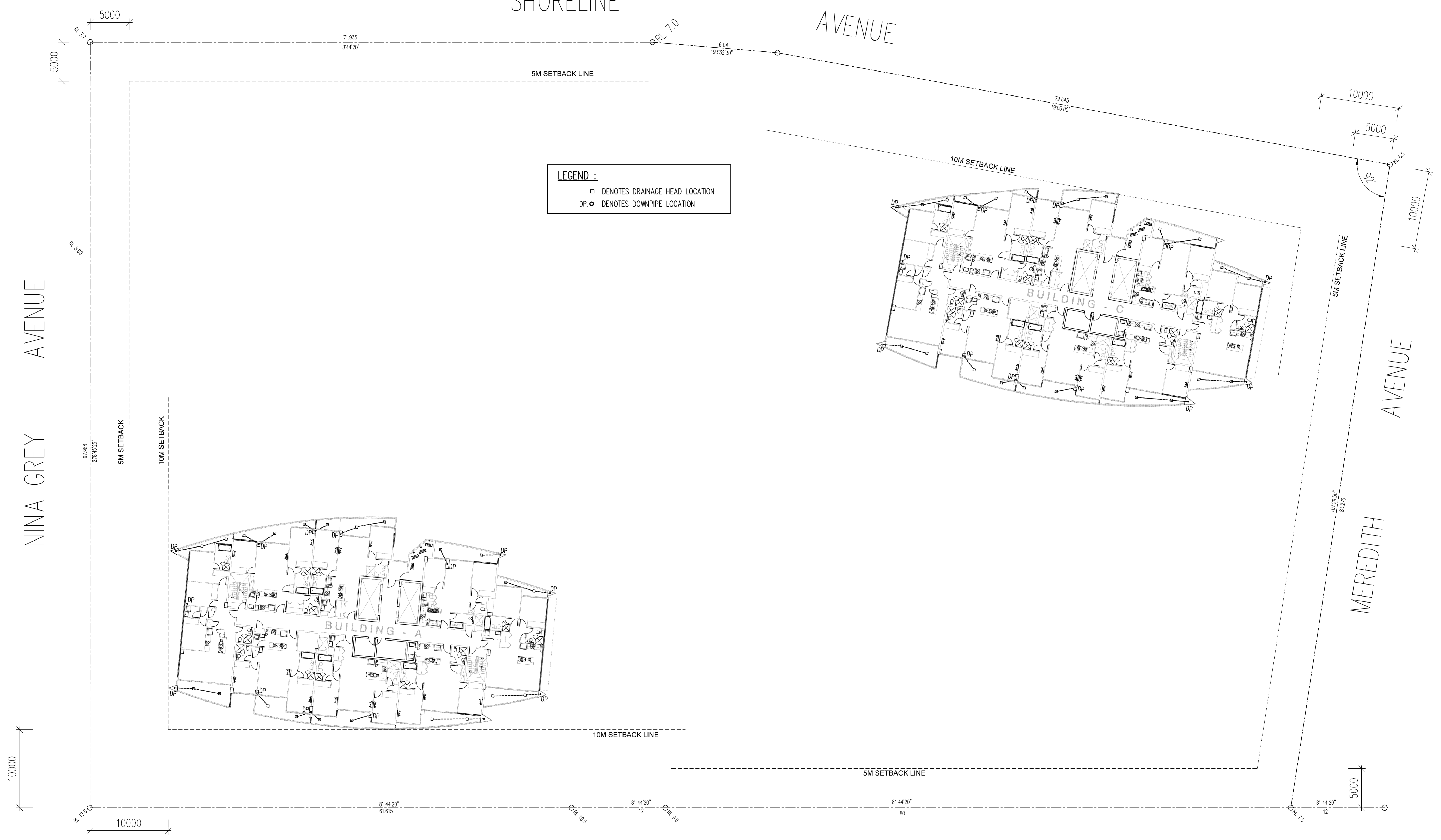
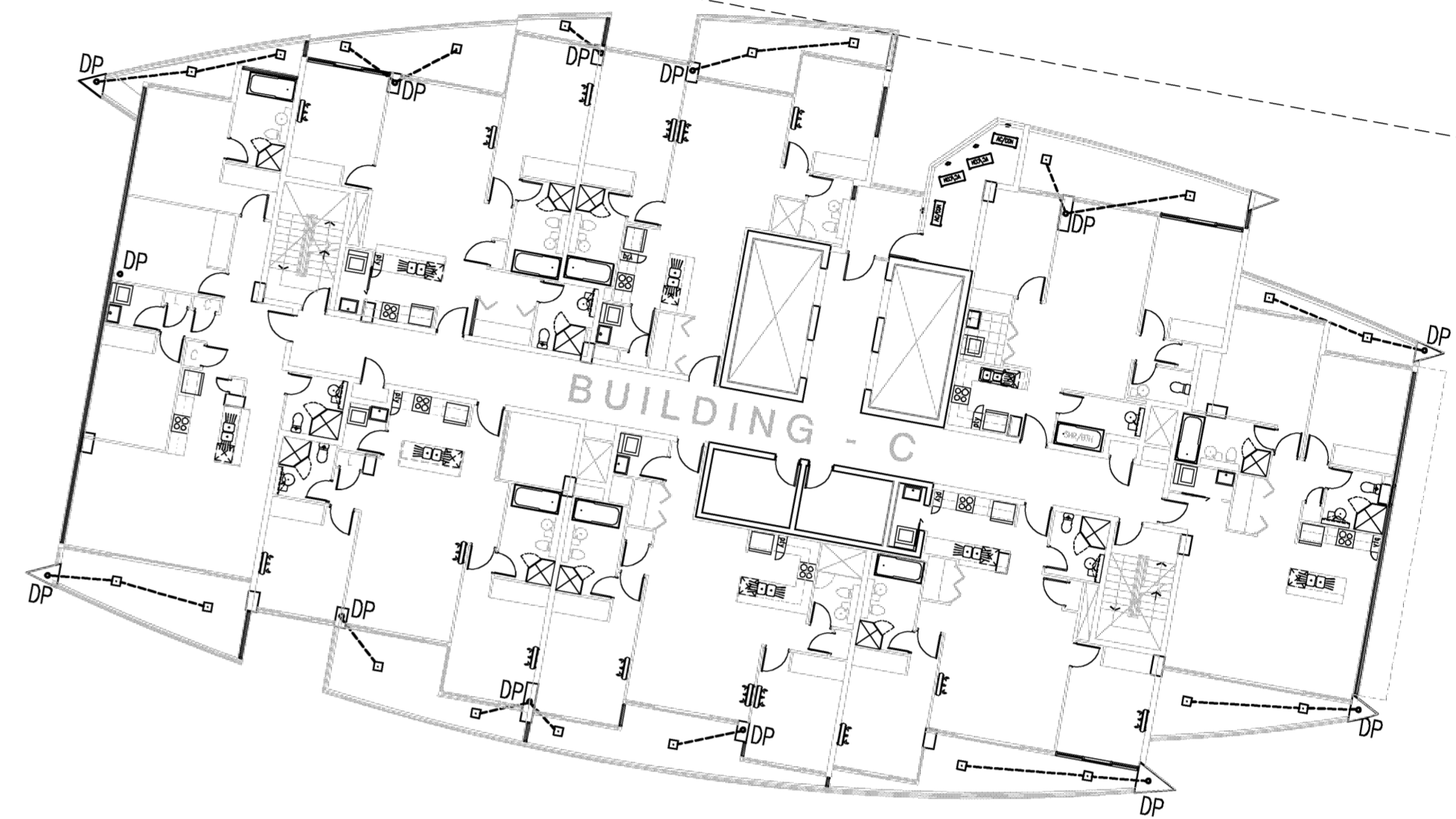
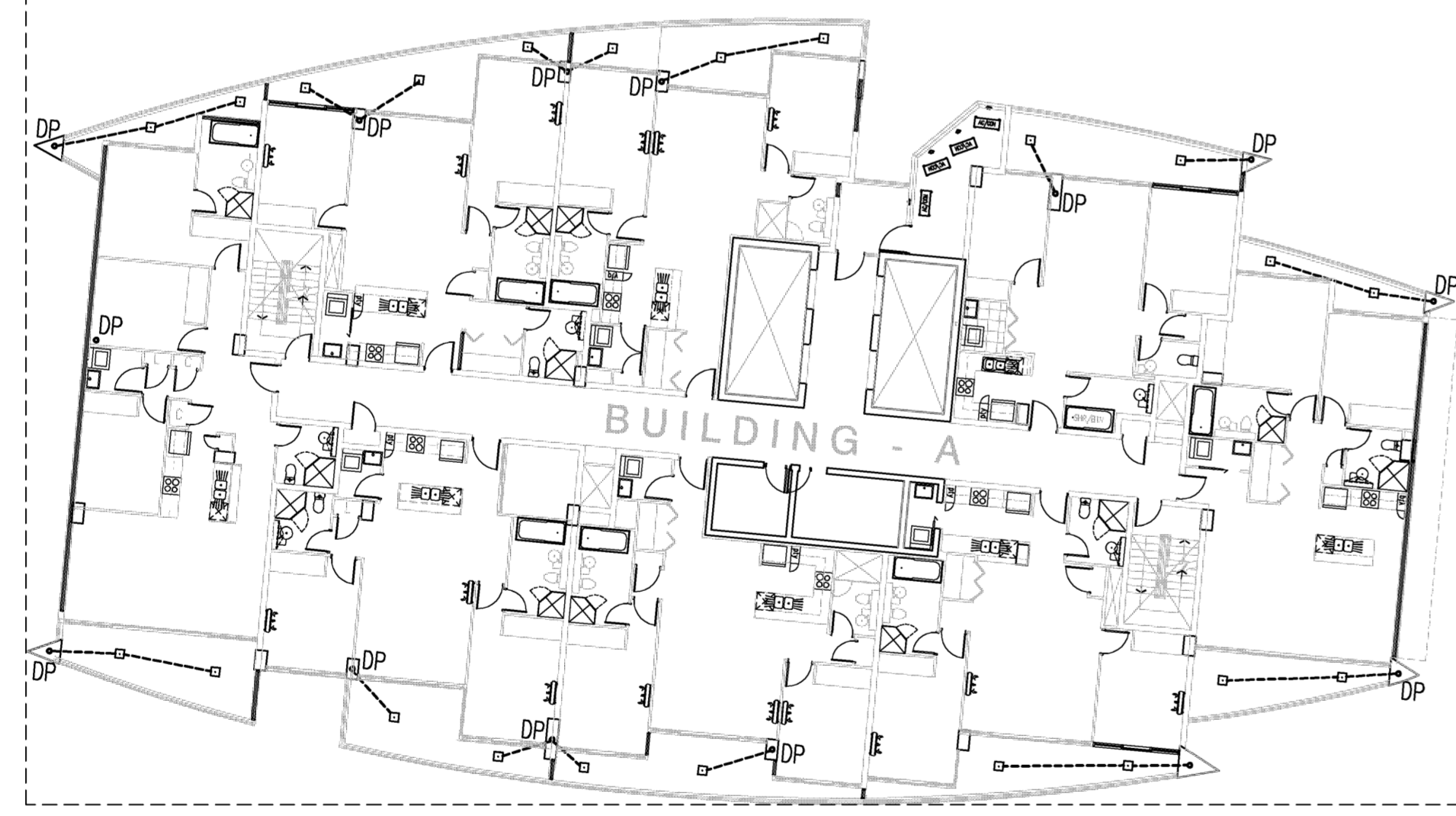
AVENUE  
MEREDITH

WALKER STREET

STREET

**LEGEND :**

- DENOTES DRAINAGE HEAD LOCATION
- DP ○ DENOTES DOWNPIPE LOCATION



ISSUE	DATE	REVISION	BY	ISSUE	DATE	REVISION	BY
A	04.06.10	ISSUED FOR COUNCIL APPROVAL	RF				

**DO NOT SCALE**  
 USE FIGURED DIMENSIONS AT ALL TIMES. IF IN DOUBT CHECK WITH MERITON APARTMENTS PTY. LTD. CONTRACTORS TO CHECK AND VERIFY ALL LEVELS, DATUMS AND DIMENSIONS ON SITE AND SHALL REPORT ANY DISCREPANCIES OR OMISSIONS TO MERITON APARTMENTS PTY. LTD. PRIOR TO COMMENCEMENT OF WORK AND DURING THE CONSTRUCTION PHASE.

**NORTH:**

**GENERAL NOTES:**  
 THIS DRAWING IS THE EXCLUSIVE PROPERTY OF MERITON APARTMENTS PTY. LTD. AND THE REPRODUCTION OF ANY PART WITHOUT THE PRIOR WRITTEN CONSENT OF MERITON APARTMENTS PTY. LTD. IS A VIOLATION OF APPLICABLE LAWS. IN NO EVENT SHALL MERITON APARTMENTS PTY. LTD. BE HELD LIABLE FOR SPECIAL, COLLATERAL, INCIDENTAL OR CONSEQUENTIAL LIABILITY IN CONNECTION WITH THE USE OF THIS DIGITAL DATA ONCE RELEASED FROM THE MERITON APARTMENTS PTY. LTD. OFFICES.  
 THIS DRAWING IS TO BE READ AND UNDERSTOOD IN CONNECTION WITH THE STRUCTURAL, MECHANICAL, ELECTRICAL AND / OR ANY OTHER CONSULTANTS' DOCUMENTATION AS MAY BE APPLICABLE TO THE PROJECT PRIOR TO THE START OF ANY WORKS AND FOR ITS DURATION.

**Meriton**  
**Apartments Pty. Ltd.**  
 Builders & Developers  
 297-277 Castlereagh Street, Sydney NSW 2000  
 Tel: (02) 92641177 Fax: (02) 92641402 Email: [rl@meriton.com.au](mailto:rl@meriton.com.au)  
 Internet: <http://www.meriton.com.au>

**PROJECT:**  
 PROPOSED RESIDENTIAL AND COMMERCIAL DEVELOPMENT  
 LOT 101 AND 102  
 52 WALKER STREET  
 RHODES PENINSULA, NEW SOUTH WALES 2138

**DRAWING TITLE:**  
 LEVEL 8-16 - DRAINAGE

PROJECT No.	DATE:	DRAWING No.	REV.
#	5/28/2010	D-413-DR	A
DRAWN BY:	SCALE:		
PGH	AS SHOWN		

CAD FILE:  
 C:\WF\142-WALKER\DWG\LOT 101 AND 102\DRAINAGE\113-DR-LEVEL 8-16.dwg