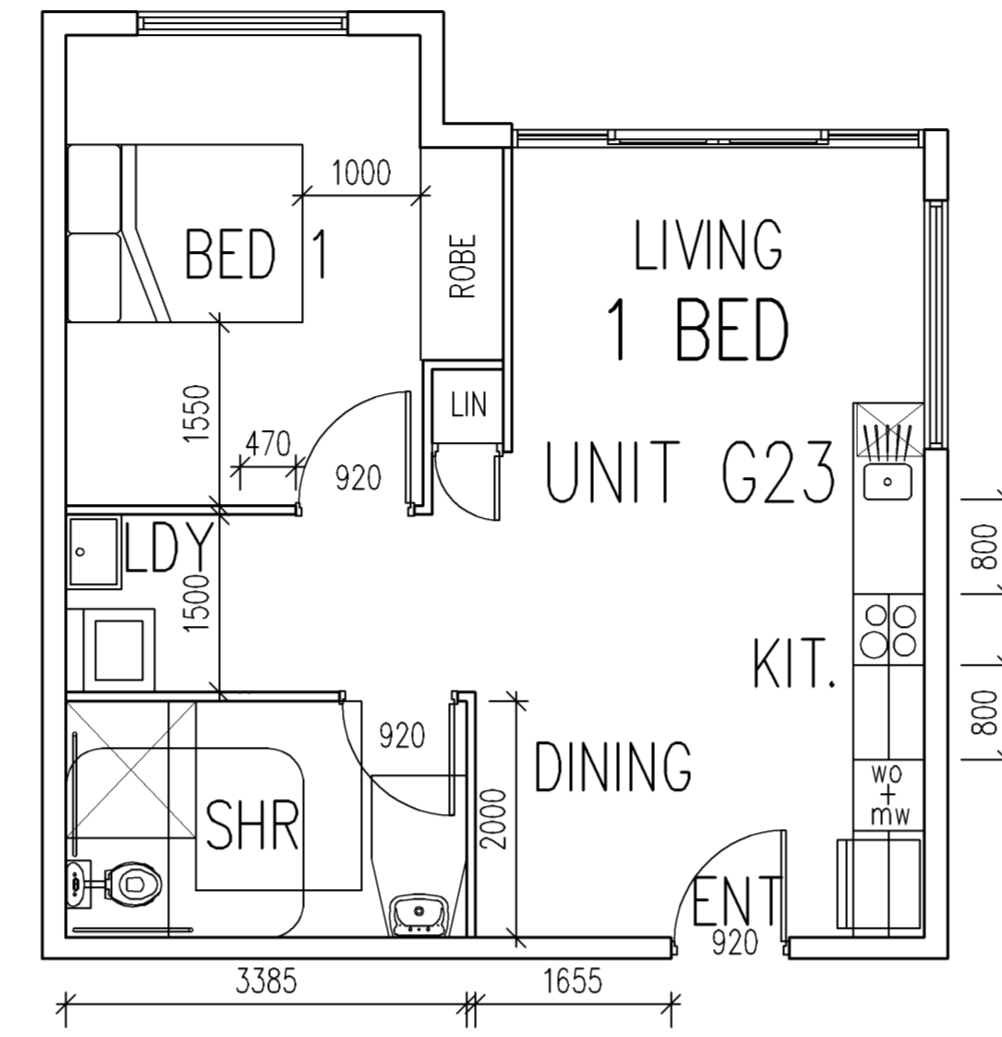
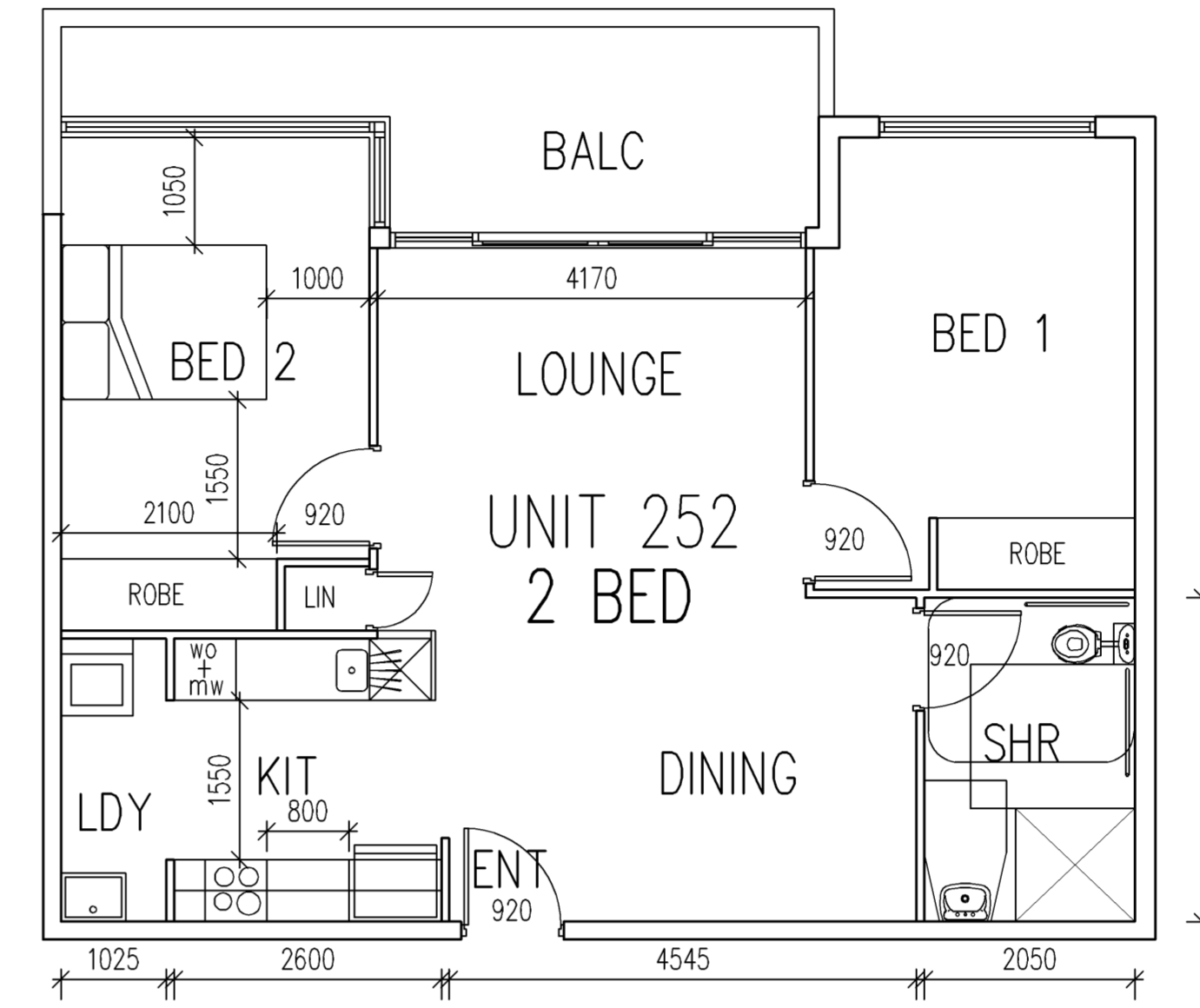


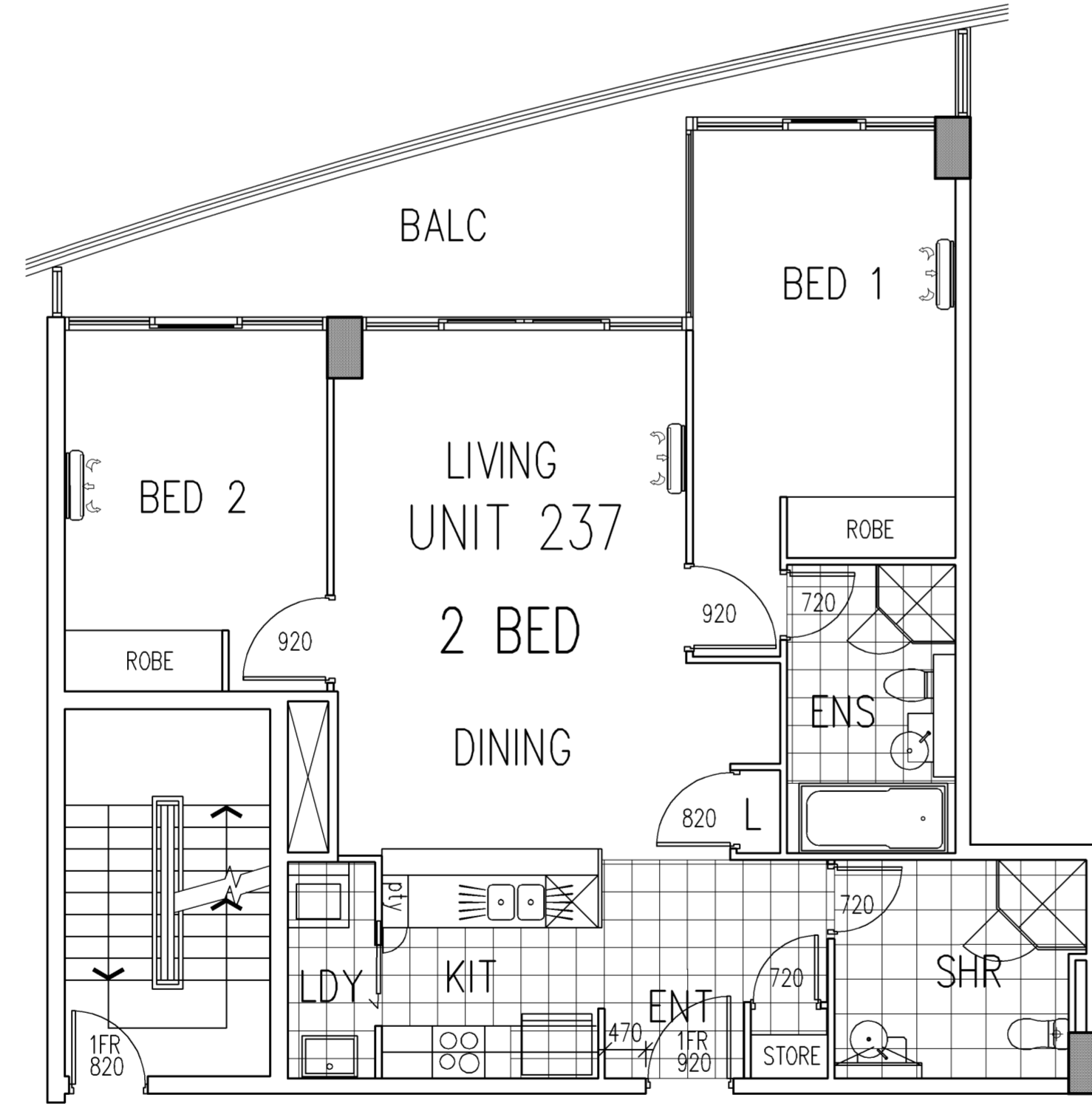
"ADAPTED UNIT"  
BLOCK A: 210,310,410  
BLOCK C: G29,137,237



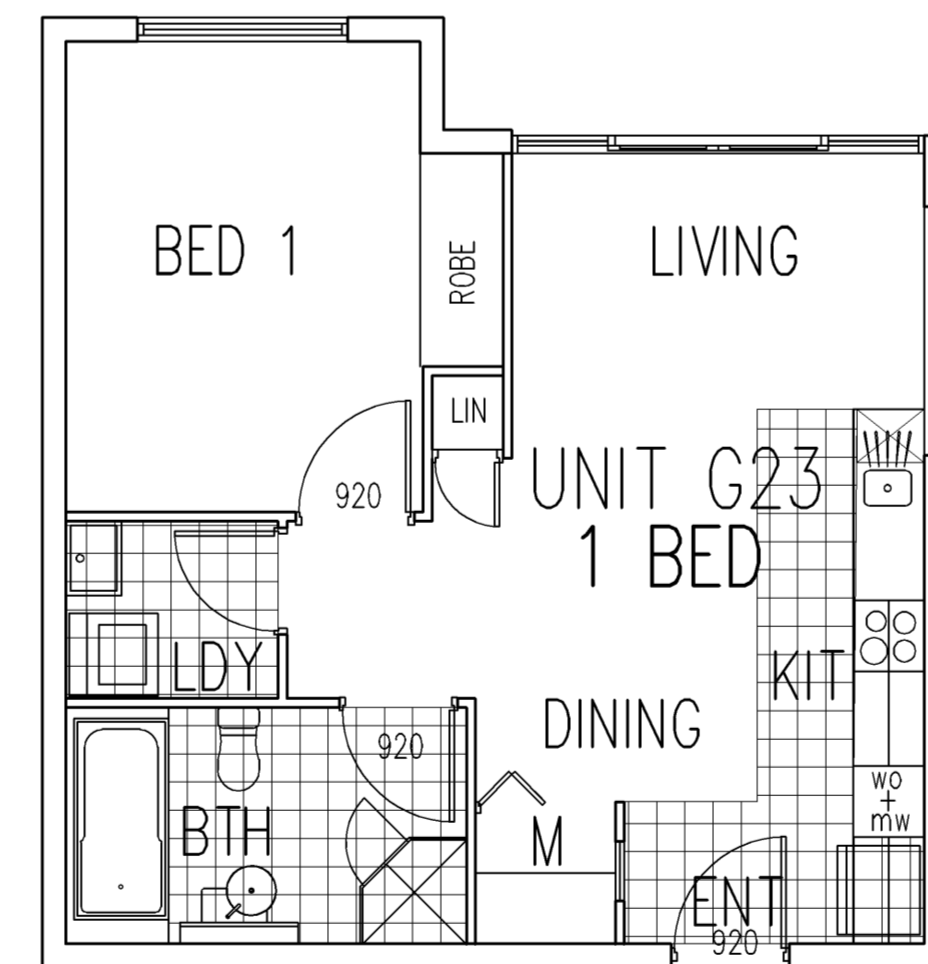
"ADAPTED UNIT"  
BLOCK B: G23



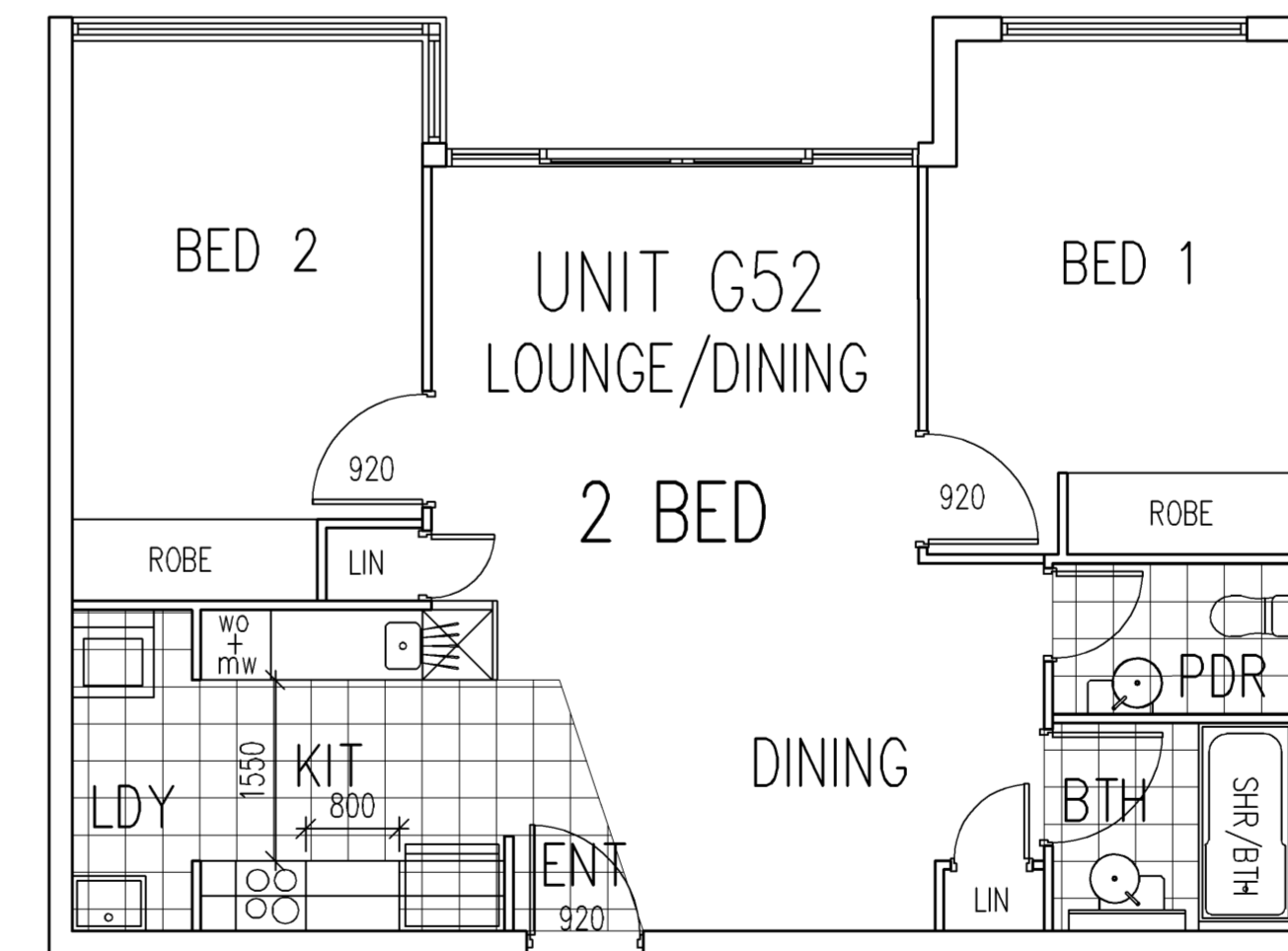
"ADAPTED UNIT"  
BLOCK D: G52



"BEFORE ADAPTATION"  
BLOCK A: 210,310,410  
BLOCK C: G29,137,237



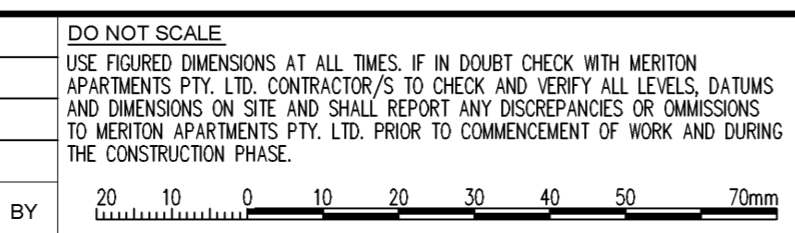
"BEFORE ADAPTATION"  
BLOCK B: G23



"BEFORE ADAPTATION"  
BLOCK D: G52

**ADAPTABLE**  
SCALE 1:200

ISSUE	DATE	REVISION	BY	ISSUE	DATE	REVISION	BY



NORTH

GENERAL NOTES:  
THIS DRAWING IS THE EXCLUSIVE PROPERTY OF MERITON APARTMENTS PTY. LTD. AND THE REPRODUCTION OF ANY PART WITHOUT THE WRITTEN CONSENT OF MERITON APARTMENTS PTY. LTD. IS A VIOLATION OF APPLICABLE LAWS. IN NO EVENT SHALL MERITON APARTMENTS PTY. LTD. BE HELD LIABLE FOR SPECIAL, COLLATERAL, INCIDENTAL OR CONSEQUENTIAL LIABILITY IN CONNECTION WITH THE USE OF THIS DIGITAL DATA ONCE RELEASED FROM THE MERITON APARTMENTS PTY. LTD. OFFICES.  
THIS DRAWING IS TO BE READ AND UNDERSTOOD IN CONJUNCTION WITH THE STRUCTURAL, MECHANICAL, ELECTRICAL AND / OR ANY OTHER CONSULTANTS DOCUMENTATION AS MAY BE APPLICABLE TO THE PROJECT PRIOR TO THE START OF ANY WORKS AND FOR ITS DURATION.

**Meriton**  
Apartments Pty. Ltd.  
Builders & Developers  
Level 11, 528 Kent Street, Sydney NSW 2000  
Tel: (02) 9287 2888 Fax: (02) 9287 2777 Email: info@meriton.com.au

PROJECT:  
PROPOSED RESIDENTIAL DEVELOPMENT  
LOT 101 AND 102  
52 WALKER STREET  
RHODES, NSW XX

DRAWING TITLE:  
**ADAPTABLE**

PROJECT No.	DATE	DRAWING No.	REV.
749 & 750	5/31/2010	DA-120	B

CAD FILE:  
S:\VE-WALKER\ARCH\LOT-101 AND 102\REF\ADAPTABLE.DWG