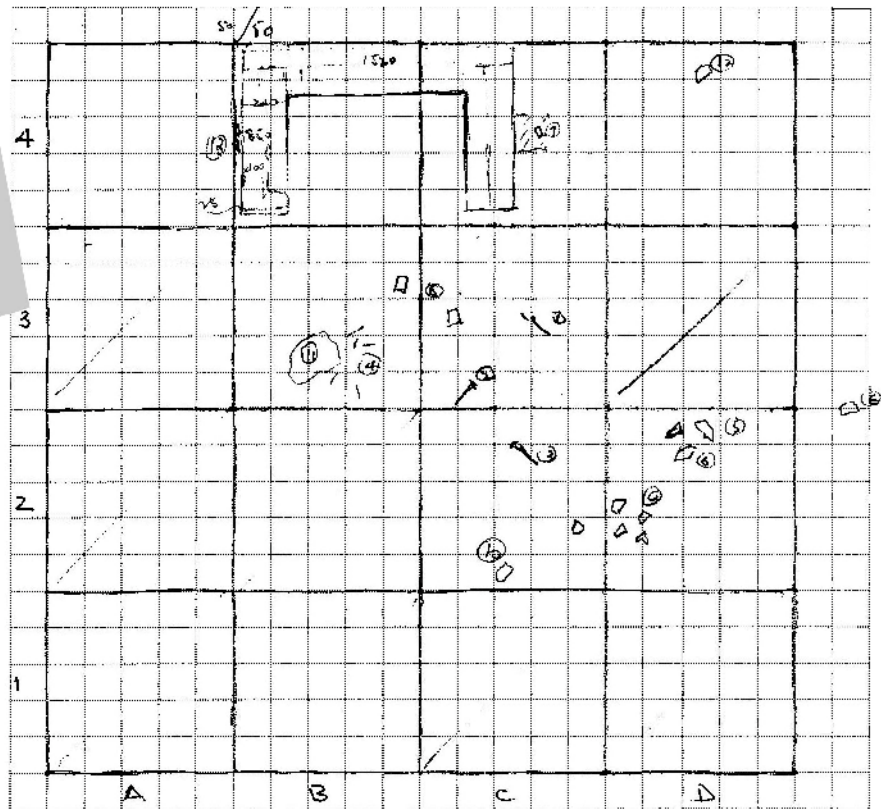




scheme of grid and features



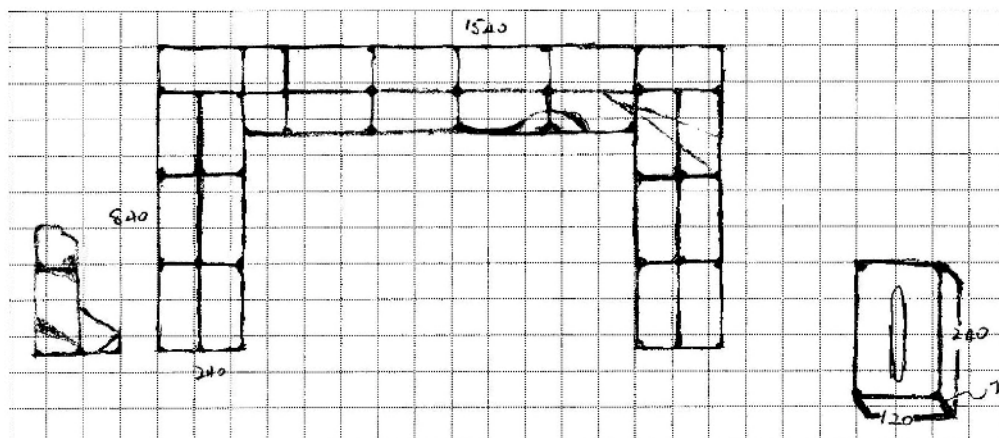
scatter of fallen bricks,
probable chimney fall

1. # miner's pick
2. long Fe spike
3. short Fe spike
4. scatter Fe nails
5. ceramic
6. scatter ceramic (small)
7. 12g shotgun cartridge base
8. 2 x pcs flat Fe
9. 4 x pcs window glass
10. pce bottle glass 'RILI'
11. Egg cup base with ceramic 4 x pcs
plain/3 x pcs blue tprint
12. non-Fe metal sheet, thin
13. 2 x pcs bottle glass

scale

0 200 400 600 800 1000mm

detail of fireplace footings and fireplace residue



scale

0 100 200 300 400 500mm



Figure 2.3
View from south of site MH11-E, looking along the line of shelters over that site, the location of discarded MH10-E and MH5-E
Paul Rheinberger
No Scale



Figure 2.4
Overview of the grid at MH11-E.
Paul Rheinberger
Scale: 1.0 metre grid



Figure 2.5
Detail of the fireplace footing and part first fireplace course, MH11-E, from south.
Paul Rheinberger
Scale: 200mm



Figure 2.6
Detail of the fireplace footing and part first fireplace course, MH11-E, from east
Paul Rheinberger
Scale: 200mm



Figure 2.7
Detail of the fireplace footing and part first fireplace course, MH11-E, from north.
Paul Rheinberger
Scale: 200mm



Figure 2.8
Detail of the fireplace footing and part first fireplace course, MH11-E, from west
Paul Rheinberger
Scale: 200mm

and it was determined to investigate further, on the basis that this feature may well have been a door sill and outer step as part of a cottage structure.

A grid was established, centred in a north south orientation on the easterly edge of the brick assemblage and extending there from in a westerly direction. The grid comprised 20 x 1 metre squares identified by letter on the southern side from A to D and numerically on the western side northerly from 1-5. The location of this grid is shown in green on Figure 2.1 whilst the scheme of gridding is shown in the Figure 2.9, as is the location of the brick/stone assemblage and the artefact returns which are referred to hereunder. The area was manually excavated using spade, trowel and, particularly in relation to the brick/stone feature, by brush. The brick assemblage had a total maximum length of 1340 in a north south orientation and width of 890 in an east west orientation. The maximum length of stone work was 1500 by a depth of 330.

Manual excavation of the gridded area indicated that the A alignment (the western most line of squares) was sterile. Square B2 contained a single fragment of plain ceramic that was associated with other fragments in the adjoining square B3 as well as the relevant corners of squares C2 and C3. Square C1 yielded five fragments of plain ceramic, C2 the aforementioned two pieces of plain ceramic in association with other squares as well a piece of green bottle glass, a close assemblage of three pieces of blue printed ceramic and another similar assemblage of four pieces of blue printed ceramic and the broken neck of a green bottle. Square C3 yielded the aforementioned piece of plain ceramic and a further two pieces of plain ceramic. Square C4 showed a large iron bolt and a ceramic cup handle in association two pieces of ceramic, one plain and one printed, and the plain flat side of a clear bottle embossed "Sperm Sewing Machine Oil". Square C5 contained a short length of beef bone which appeared to have been butchered. Square D1 yielded two fragments of ceramic, a ceramic cup base, a fragment of blue printed ceramic and one of green printed ceramic. Square D3 yielded a collection of nails, two iron spikes and a tight scatter of very small pieces of ceramic and bottle glass. Square D4 exposed more nails, an iron bolt, two pieces of ceramic one of which gave part of a makers mark and Square D5 yielded a piece of blow moulded green bottle glass.

The north eastern peg of the D4 square was measured at 15.3 metres, bearing 235 degrees magnetic, to the MH5 survey peg.

A feature external to the grid that was observed quite positively was a scatter of fragments of glass (both window and bottle) and ceramic disposed over an area south east of the presumed door way to this hut. The approximate scale and disposition of this scatter is shown on Figure 2.9.

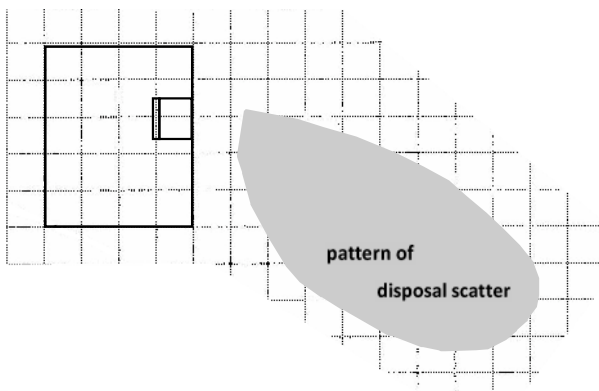
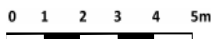
Apart from making a detailed measured drawing of the brick/stone assemblage, a series of photographs were exposed of the feature and its environment, these being attached as Figures 2.10, 2.11, 2.12, 2.13, 2.14 and 2.15. The detail of the brick/stone assemblage is shown in Figures 2.11, 2.12, 2.13 and 2.14.

2.2.7 Finalisation of Fieldwork

At the conclusion of fieldwork the excavations were backfilled, in terms of 'Methodology'. The study area was otherwise left clear with all drains remaining in place: it should be noted that this study was substantially hampered by an extended period of wet weather so that on six days between 6-21 July, visits were made to the site and it was deemed impossible to conduct further investigation. During this period, with the assistance of Theiss personnel, the three sites nominally identified for manual investigation were covered by shelters and it was necessary in the latter part of the wet weather period to employ fans and heaters to attempt to dry the ground sufficiently to enable the manual archaeological investigation to continue.

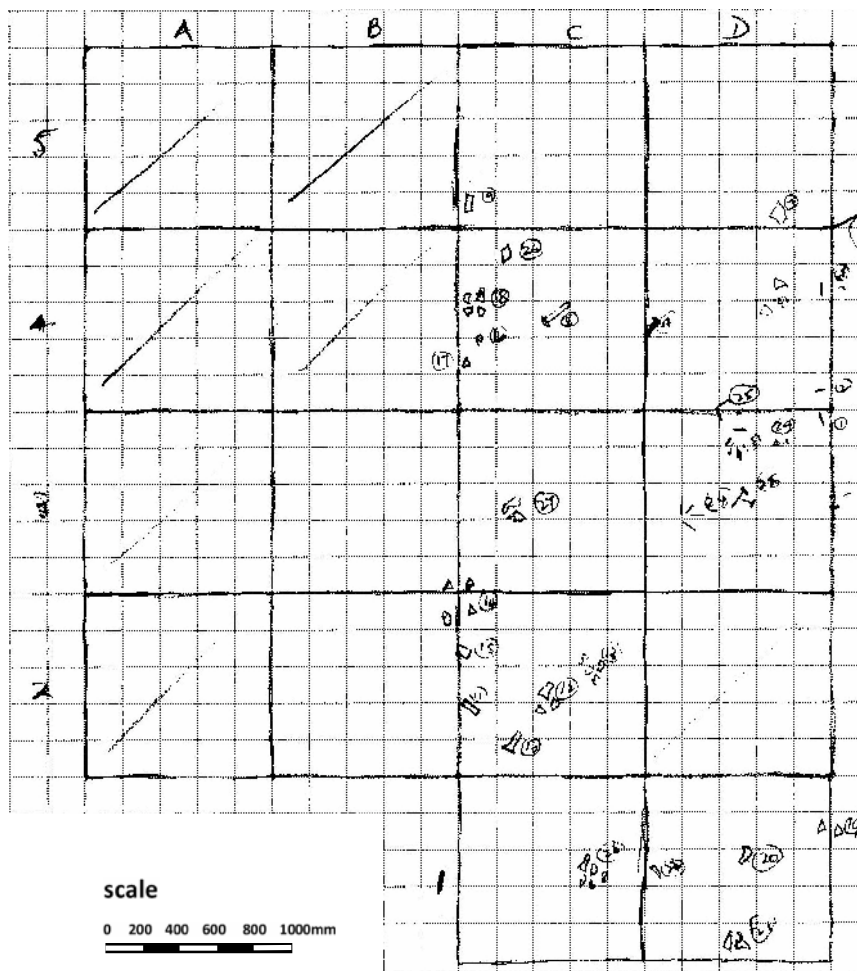


scale



scheme of grid and features

1. Fe nail
2. Fe nail
3. Fe nail
4. Fe bolt
5. scatter of Fe nails
6. ceramic, part manuf's mark
7. bottle glass, green, blowmoulded
8. Fe bolt
9. bone (beef)
10. bottle glass, clear, neck
11. bottle glass, clear, pt neck
12. 3 x pcs, ceramic, blue tprint
13. 4 x pcs ceramic, blue tprint
14. 4 x pcs ceramic, plain
15. bottleglass, green, neck
16. ceramic cup handle
17. 2 x pcs ceramic, 1 plain, 1blue tprint
18. 4 x pcs ceramic, 3 plain, 1 gold band
19. 2 x xpcs ceramic
20. ceramic cup base
21. ceramic, brown
22. ceramic, green tprint
23. 5 x pcs ceramic, plain
24. 4 x Fe nails
25. 3 x Fe nails
26. bottle glass, embossed 'SPERM SEWING MACHINE OIL'
27. 2 x pcs ceramic, plain
28. 2 x Fe spikes
29. scatter small pcs bottle glass and ceramic



scale





Figure 2.10
View of the material part of the grid including the door sill and brick and brickbat apron, MH5-E, from south.
Paul Rheinberger
Scale: 200mm



Figure 2.11
Detail of the door sill and brick and brickbat apron, MH5-E, from east.
Paul Rheinberger
Scale: 200mm



Figure 2.12
Detail of the door sill and brick and brickbat apron, MH5-E, from north.
Paul Rheinberger
Scale: 200mm



Figure 2.13
Detail of the door sill and brick and brickbat apron, MH5-E, from west.
Paul Rheinberger
Scale: 200mm



Figure 2.14
Detail of the door sill and brick and brickbat apron, MH5-E, from south.
Paul Rheinberger
Scale: 200mm



Figure 2.15
Detail of two identifiable brick types in the apron, MH5-E:
At left, a brick and batt with heart shaped frogs of 'The Pack' type;
at right, the long semi-round ended rectangular frog of the early Maitland style.
Paul Rheinberger
Scale: 10mm

