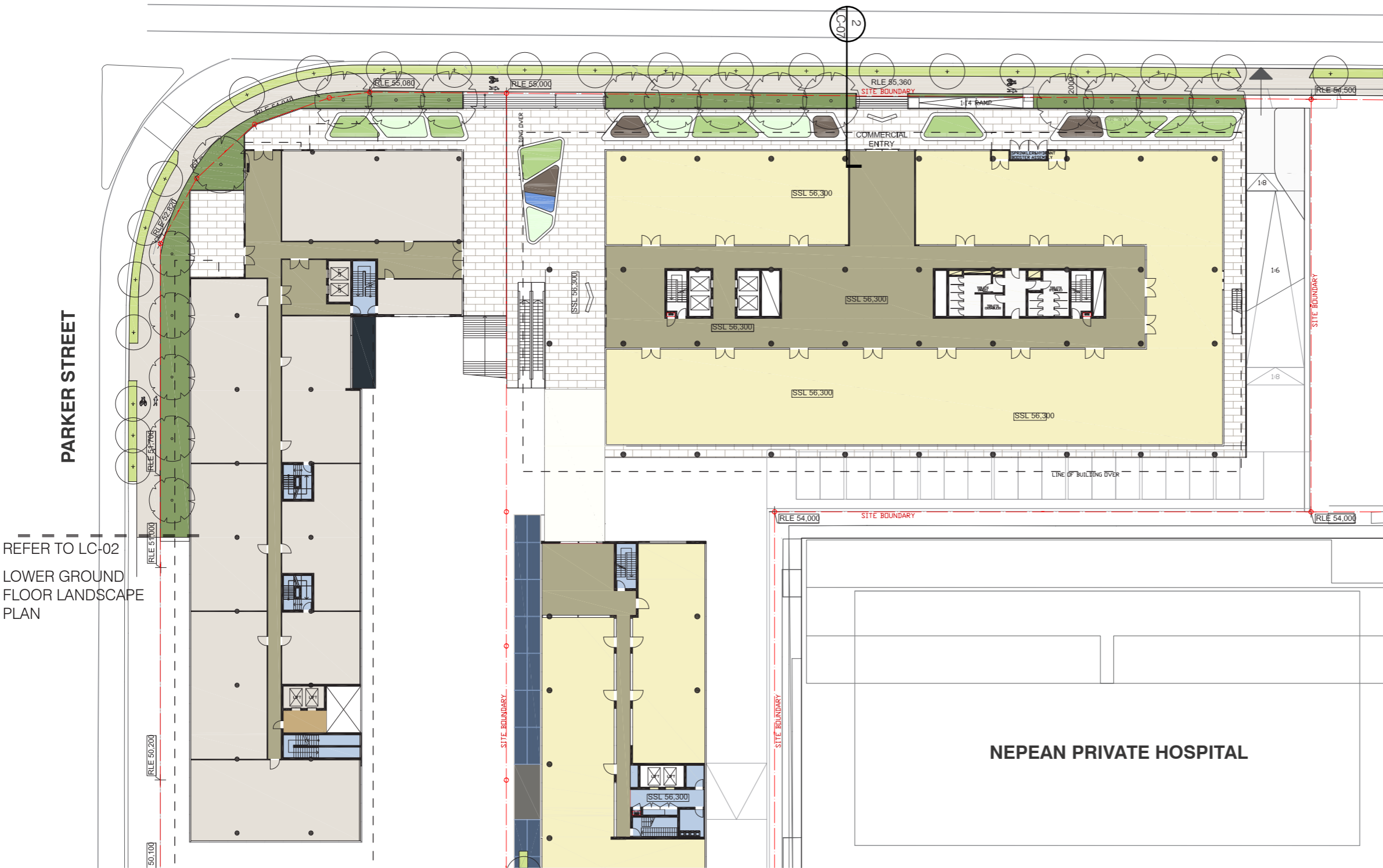
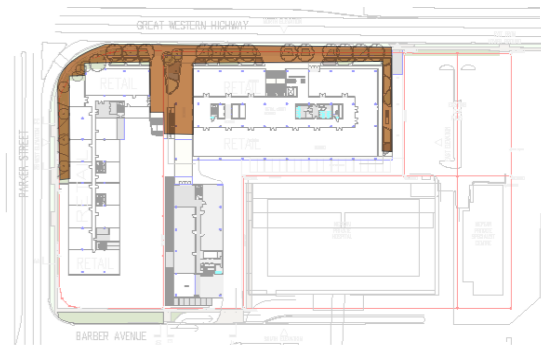


**Barber Avenue,
Kingswood**
Landscape Report Rev B



2011-May

GREAT WESTERN HIGHWAY

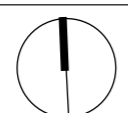


REFER TO LC-02
LOWER GROUND
FLOOR LANDSCAPE
PLAN

NEPEAN PRIVATE HOSPITAL

Legend

- Understorey plantings in kerbside verge
- Understorey in raised planters.
- Timber decks.
- Lawn / groundcover terraces in raised planter.
- Water feature
- Deep soil zone



Architect
TURNER+ASSOCIATES

Landscape Architect
turf design

Project
Barber Avenue,
Kingswood

Drawing Title
**GROUND FLOOR
LANDSCAPE PLAN**

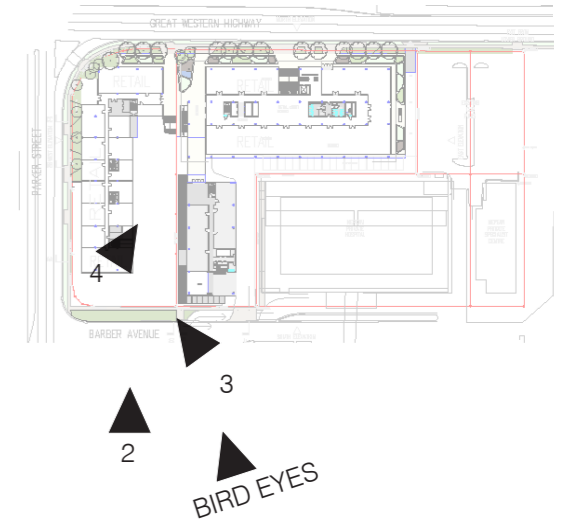
| | | |
|--|-------------------------|----------------------|
| Project No. 1007 | Dwg No. LC-03 | Revision B |
| Scale 1:500@A3 | Date 29/04/11 | |
| Dwg Status PROJECT APPLICATION | | |



View 1



View 2



View 3



View 4

| | | | | | | | | | | | | | | |
|--|---------------------------------------|---|--|---|---|----------------------------|-------------------------|----------------------|-------|------------------|--|--|--|--|
| | Architect TURNER+ASSOCIATES | Landscape Architect turf design | Project Barber Avenue, Kingswood | Drawing Title SPATIAL MODELLING - PLAZA | <table border="1"> <tr> <td>Project No. 1007</td> <td>Dwg No. LC-04</td> <td>Revision B</td> </tr> <tr> <td>Scale</td> <td>Date 29/04/11</td> <td></td> </tr> <tr> <td colspan="3">Dwg Status PROJECT APPLICATION</td> </tr> </table> | Project No. 1007 | Dwg No. LC-04 | Revision B | Scale | Date 29/04/11 | | Dwg Status PROJECT APPLICATION | | |
| Project No. 1007 | Dwg No. LC-04 | Revision B | | | | | | | | | | | | |
| Scale | Date 29/04/11 | | | | | | | | | | | | | |
| Dwg Status PROJECT APPLICATION | | | | | | | | | | | | | | |

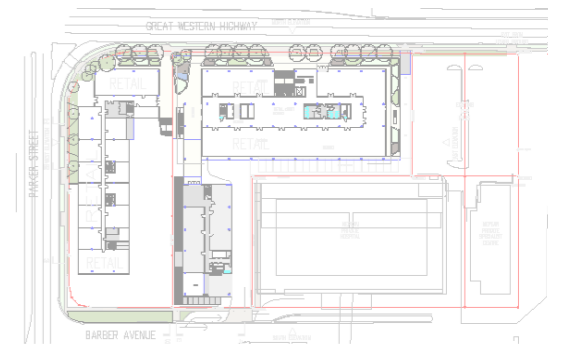
View from Great Western Highway 5 to 8



View 5



View 6



View 7



View 8

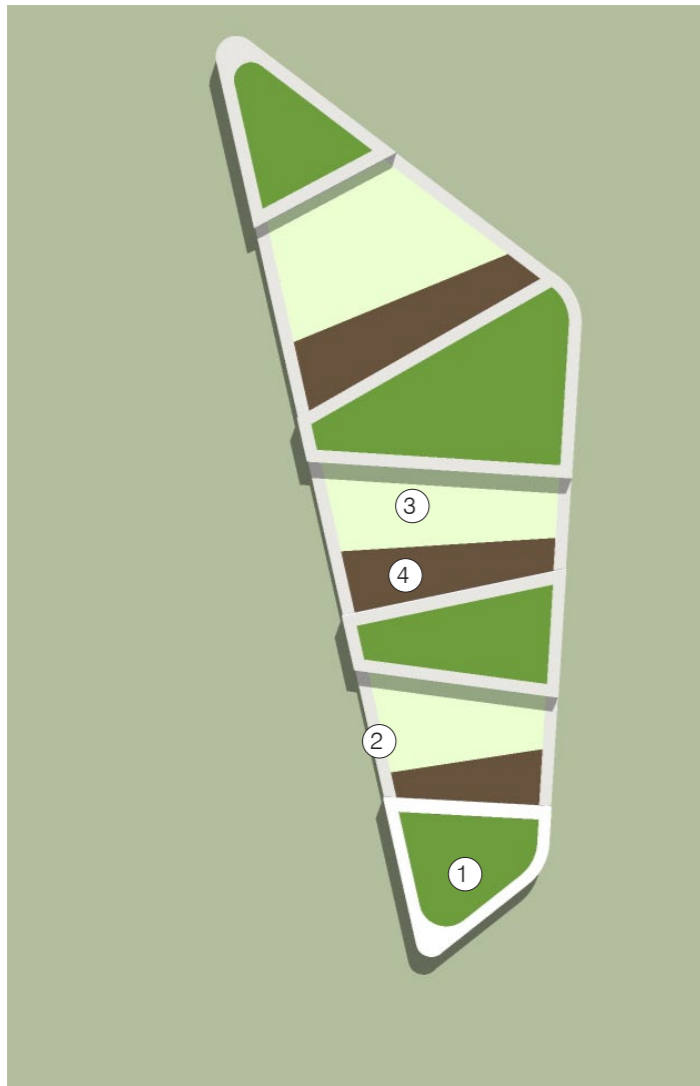
Architect
TURNER+ASSOCIATES

Landscape Architect
turf design

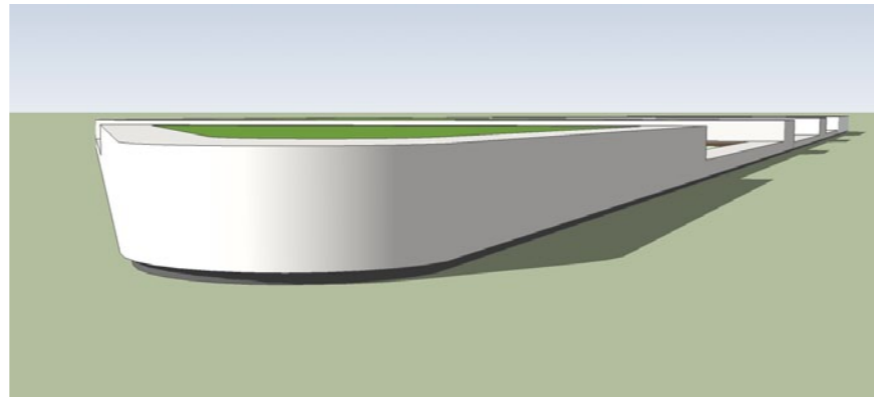
Project
Barber Avenue,
Kingswood

Drawing Title
**SPATIAL MODELLING -
PLAZA**

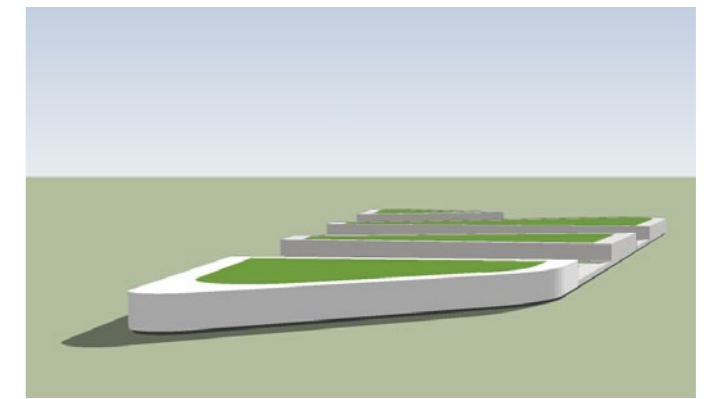
| | | |
|--|-------------------------|----------------------|
| Project No. 1007 | Dwg No. LC-05 | Revision B |
| Scale | Date 29/04/11 | |
| Dwg Status PROJECT APPLICATION | | |



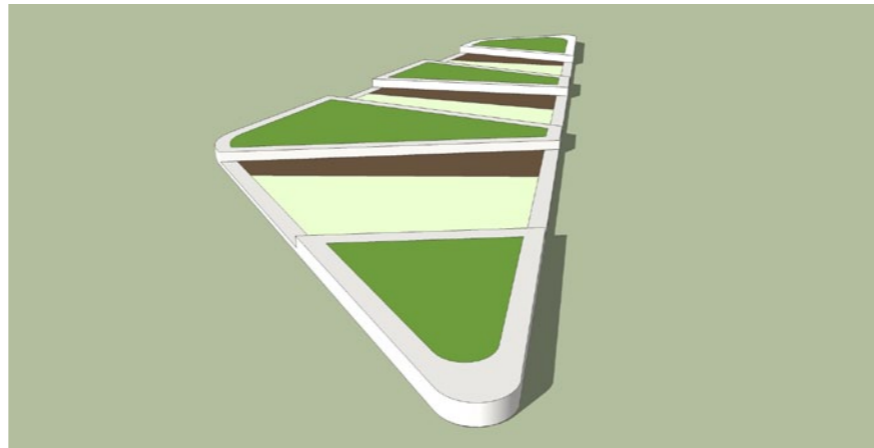
Top View



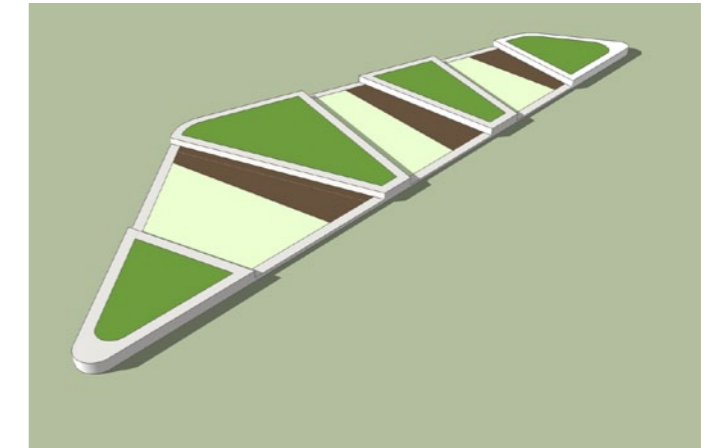
View1



View2



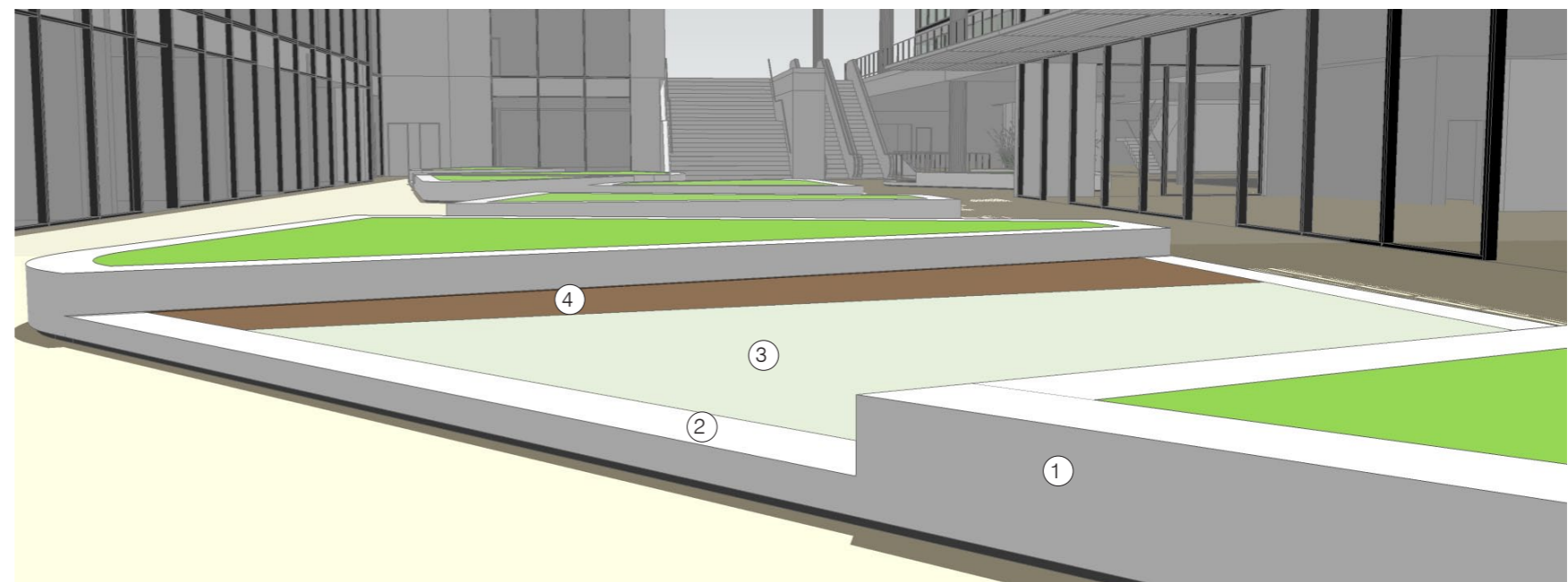
View3



View4

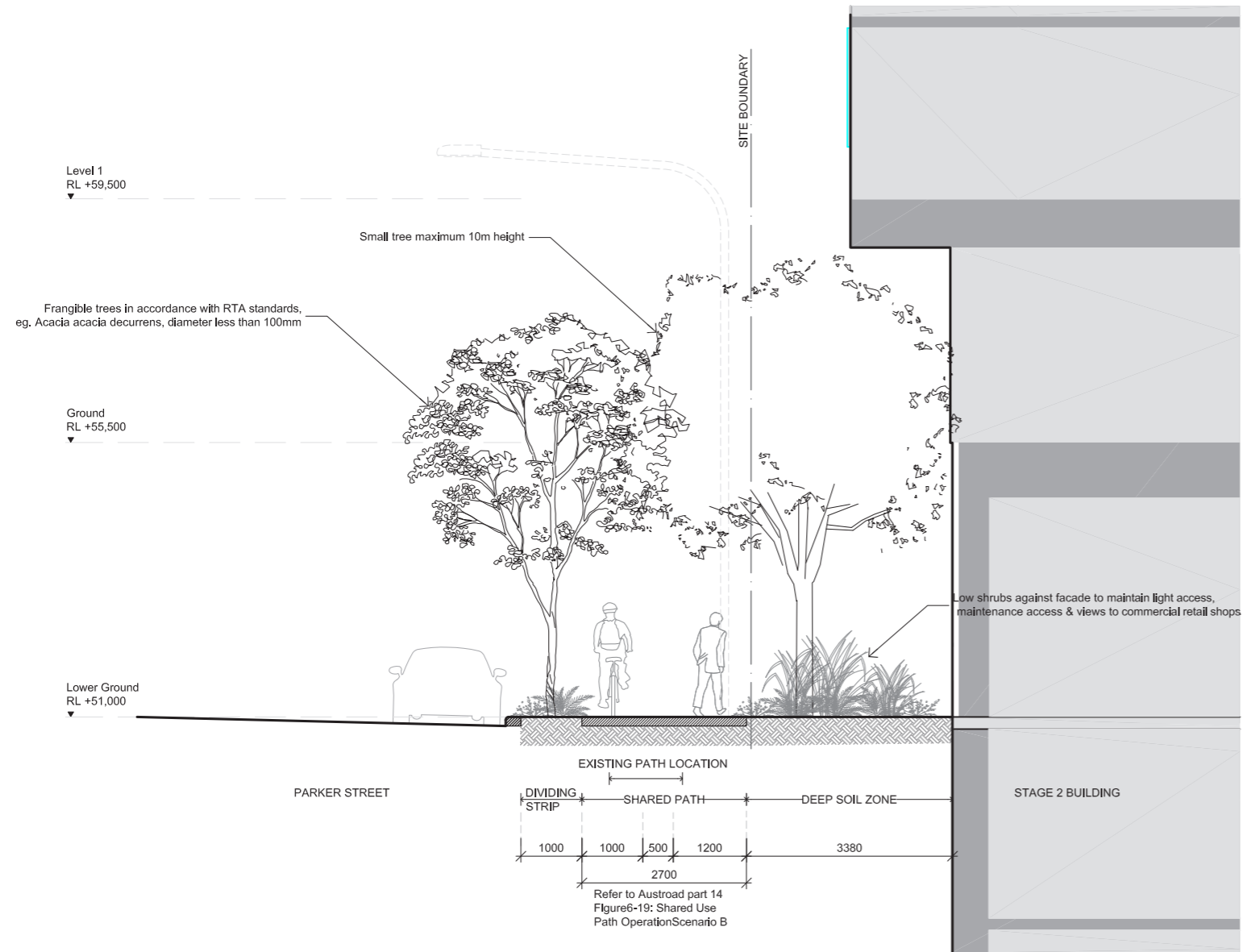
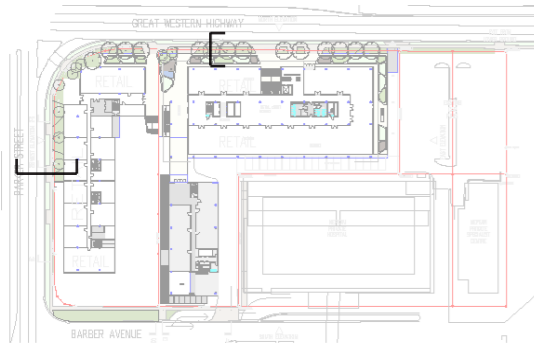
Key

- 1. Planters - 500mm high x 450mm wide concrete with recessed base
- 2. Lawn/groundcover - 150mm high x 450mm wide concrete edge with recessed base
- 3. Timber deck - Deck infill within 150mm high x 450mm wide concrete edge with recessed base

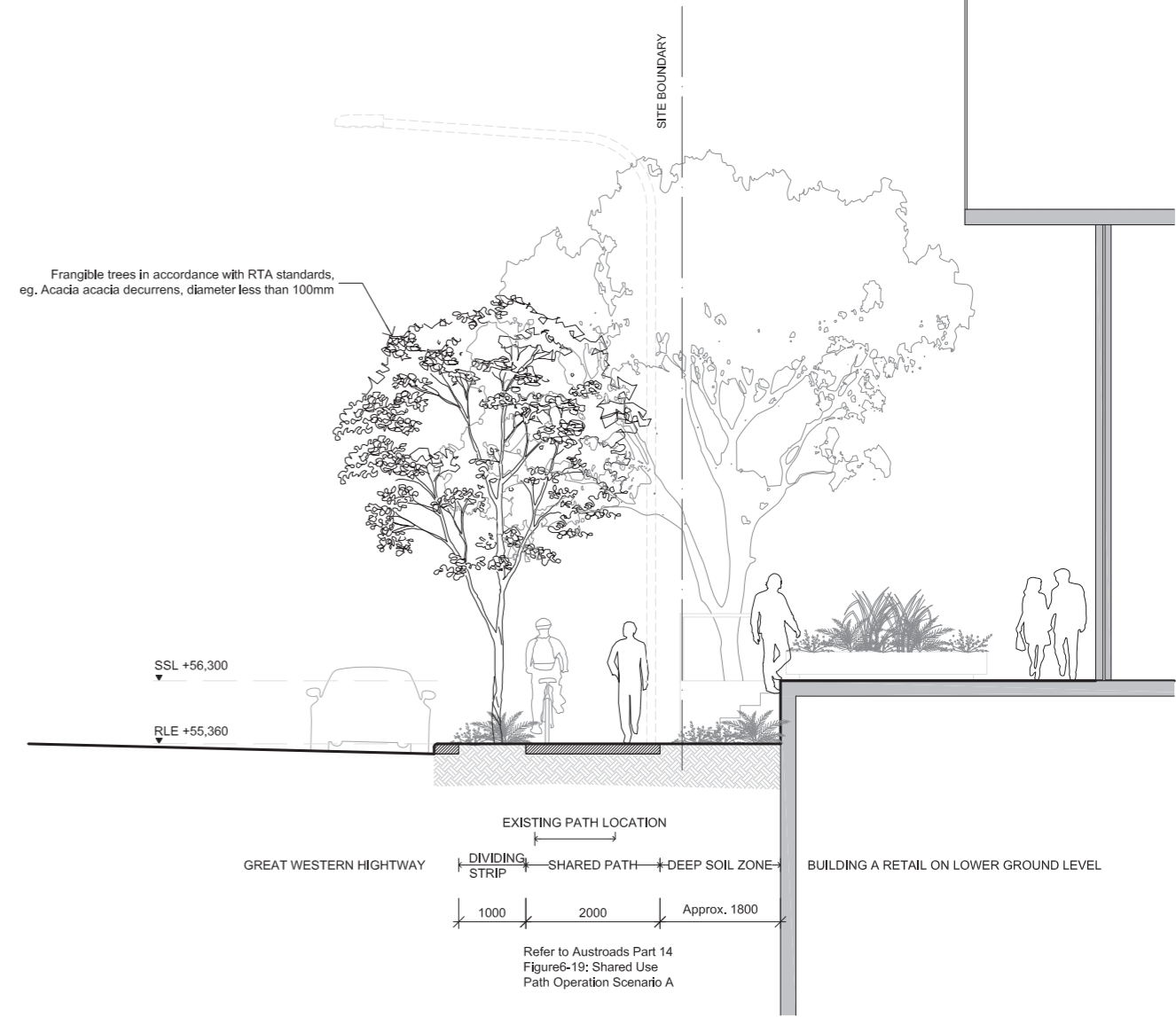


Perspective

| | | | | | | |
|--|---------------------------------------|---|--|-----------------------------------|--|--------------------------------------|
| | Architect TURNER+ASSOCIATES | Landscape Architect turf design | Project Barber Avenue, Kingswood | Drawing Title MODELLING | Project No. 1007 Scale Date 29/04/11 Draw Status PROJECT APPLICATION | Revision LC-06 B |
|--|---------------------------------------|---|--|-----------------------------------|--|--------------------------------------|



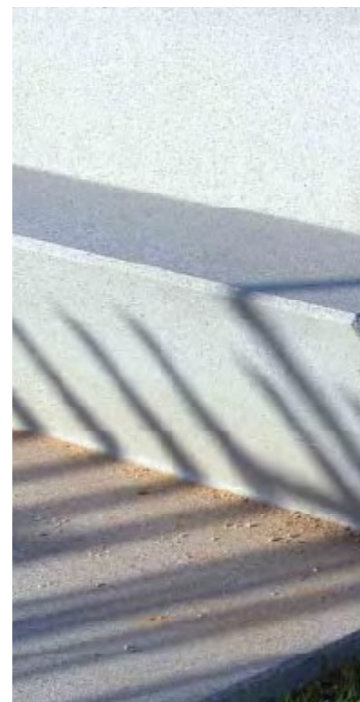
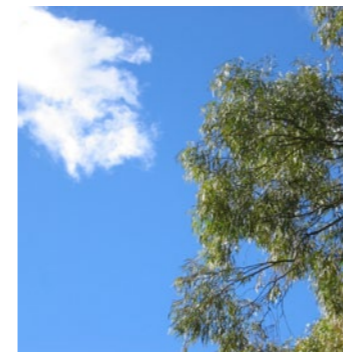
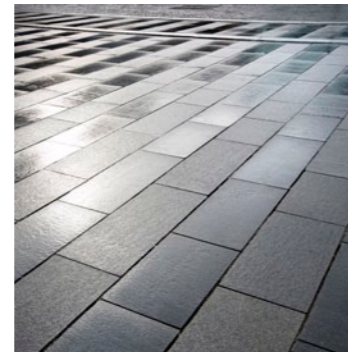
1 PARKER STREET INDICATIVE SECTION



2 GWH INDICATIVE SECTION

| | | | | | | | |
|--|---------------------------------------|---|--|----------------------------------|--|---------------------------|----------------------|
| | Architect TURNER+ASSOCIATES | Landscape Architect turf design | Project Barber Avenue, Kingswood | Drawing Title SECTIONS | Project No. 1007 | Desig No. LC-07 | Revision B |
| | | | | | Scale 1:100@A3 | Date 29/04/11 | |
| | | | | | Desig Status PROJECT APPLICATION | | |

Material



Architect
TURNER+ASSOCIATES

Landscape Architect
turf design

Project
Barber Avenue,
Kingswood

Drawing Title
MATERIAL

| | | |
|--|-------------------------|----------------------|
| Project No. 1007 | Dwg No. LC-08 | Revision B |
| Scale | Date 29/04/11 | |
| Dwg Status PROJECT APPLICATION | | |

Understorey Planting



Callistemon 'White Anzac'



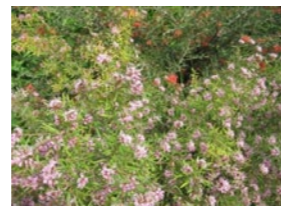
Baeckea virgata 'dwarf'



Grevillea lanigera



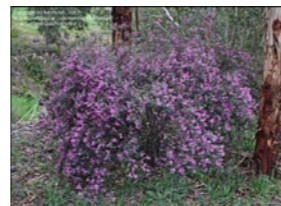
Correa decumbens



Grevillea sericea



Dianella caerulea



Indigofera australis



Lomandra longifolia



Melaleuca thymifolia



Olearia microphylla



Scaevola aemula



Westringia longifolia

Great Western Highway & Parker Street frontage

A diverse array of indigenous understorey shrubs. Group species in swathes to establish a strong visual aesthetic.



Austromyrtus dulcis



Correa decumbens



Doryanthes 'Excelsa'



Gardenia florida



Hibbertia scandens



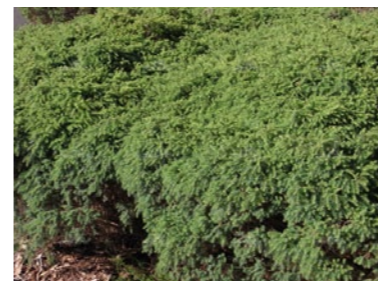
Austromyrtus inophloia



Dianella caerulea



Goodenia ovata



Melaleuca-incana



Plectranthus verticillatus



Raphiolepis 'Snow Maiden'



Westringia brevifolia var. raleighii



Viola hederacea

Lower ground floor plaza

The understorey planting will be comprised of a harmonious mix of indigenous, part shade/shade tolerant plant species appropriate to the setting beneath the tree canopy above.

A small number of plant species will be used in order to ensure foliage colour and textural contrasts are in harmony.

The arrangement of plants will be structured around the garden modules developing larger swathes of mass plantings.

Though modulated at different heights the planting will be structured as such to retain views across the plaza.

Architect

TURNER+ASSOCIATES

Landscape Architect

turf
design

Project

Barber Avenue,
Kingswood

Drawing Title

UNDERSTOREY PLANTING

Project No.
1007

Scale

Dwg No.

LC-09

Date
29/04/11

Dwg Status
PROJECT APPLICATION

Revision

B

Tree species have been recommended under review of BASIX and Penrith Council Landscape DCP.



Tree Planting

Great Western Highway frontage

The Great Western Highway frontage, with such an expanse of roadway, requires substantial vegetation to provide a stronger connection for pedestrians to the streetscape. It is proposed to use an indigenous tree species such as *Eucalyptus sclerophylla* to provide a medium sized canopy for shade and streetscape character, and ornamental white smooth bark to offset darker green shrubbery behind.

Parker Street frontage

Street verge planting is recommended to lift the visual quality of the street and provide additional shade and protection for pedestrians. A frangible species in accordance with RTA requirements is proposed e.g. *Acacia decurrens*.

Adjacent the building facade *Fraxinus griffithii* is recommended to nestle beneath the 10m building overhang. Crown lifting will be undertaken to ensure low hanging branches are removed to provide a clear stem height to prevent impact on pedestrians and retain views into adjacent retail shops.



Barber Avenue frontage

Locally indigenous trees are recommended to create a strong entry statement to the site. The wide verge provides ample deep soil to establish mature exemplary specimens. Suggested species include: *Eucalyptus tereticornis*, *mollucana*, and *crebra*.



Lower Ground Floor Plaza

The lower ground floor plaza will receive protection from winds and shade from surrounding buildings. It is recommended to incorporate light foliaged, and deciduous species to provide landscape qualities while maintaining access to sunlight. Recommended species include:

Acer negundo 'Kelly's Gold'
Backhousia myrtifolia
Hymenosporum flavum.



Architect
TURNER+ASSOCIATES

Landscape Architect
turf design

Project
 Barber Avenue,
 Kingswood

Drawing Title
TREE PLANTING

| | | |
|---|---------------------------|----------------------|
| Project No. 1007 | Draw No. LC-010 | Revision B |
| Scale | Date 29/04/11 | |
| Draw Status PROJECT APPLICATION | | |