

- NOTES
- BUILDER/CONTRACTOR SHALL VERIFY JOB DIMENSIONS BEFORE ANY JOB COMMENCES.
 - FIGURED DIMENSIONS TAKE PRECEDENCE OVER DRAWINGS AND JOB DIMENSIONS.
 - ALL SHOP DRAWINGS SHALL BE SUBMITTED TO THE ARCHITECT/CONSULTANT, AND MANUFACTURE SHALL NOT COMMENCE PRIOR TO RETURN OF INSPECTED SHOP DRAWINGS BY THE ARCHITECT/CONSULTANT.
 - DO NOT SCALE. ASK.

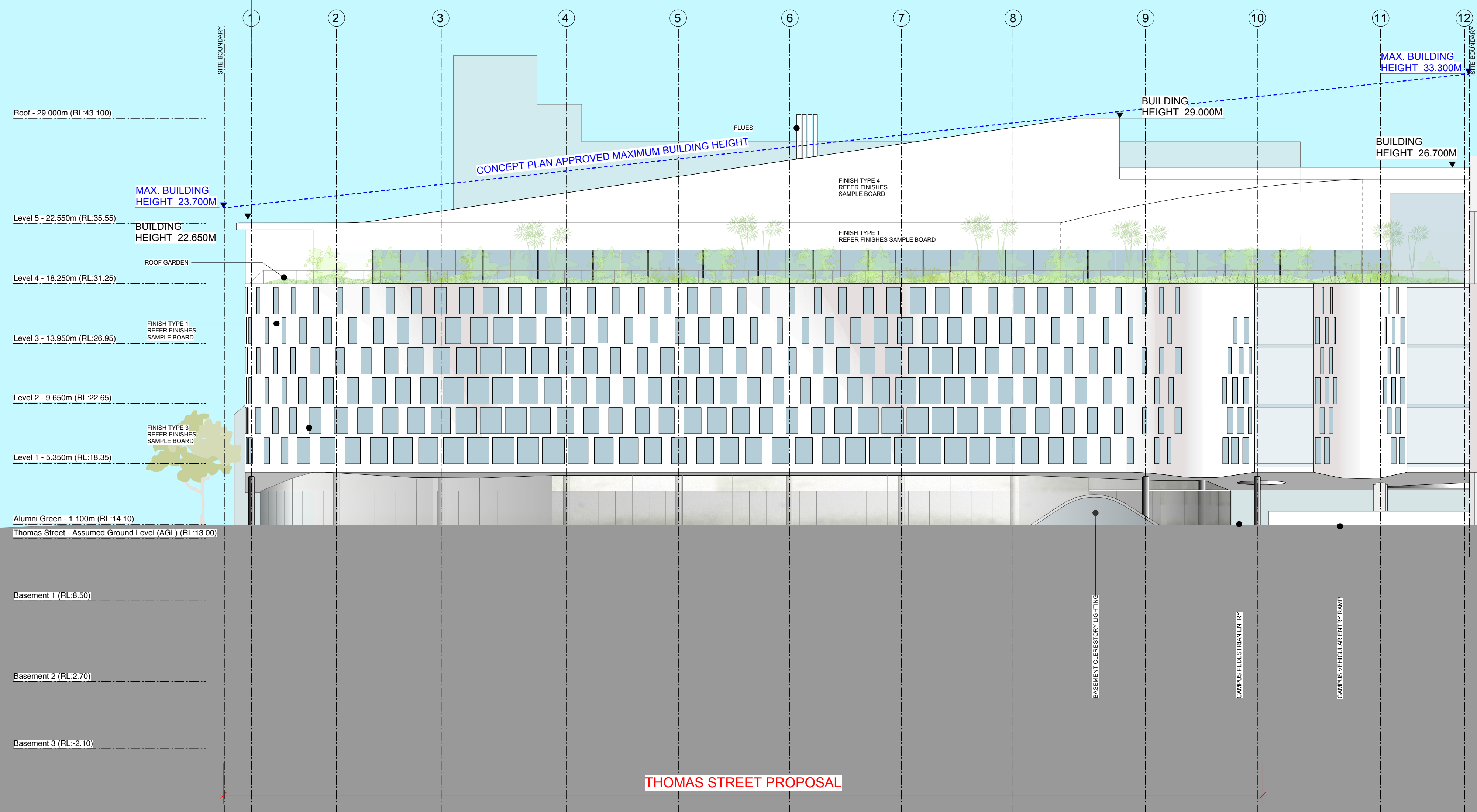
© COPYRIGHT OF THIS DRAWING IS VESTED IN DURBACH BLOCK JAGGERS ARCHITECTS & BVN.

THIS DRAWING IS AN UNCONTROLLED COPY, UNLESS NOTED OTHERWISE.

REV	DESCRIPTION	DATE
D	Revision D	01/08/11
E	Revision E	01/11/11
F	Revision F	14/11/11
G	Draft EAR Application	5/12/11
H	Project Application	19/12/11
I	Post Test of Adequacy	27/01/12

THOMAS STREET PROPOSAL

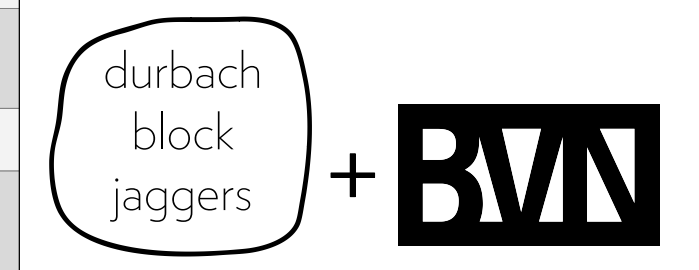
EXISTING BUILDING 4



- Roof - 29.000m (RL:43.100)
- Level 5 - 22.550m (RL:35.55)
- Level 4 - 18.250m (RL:31.25)
- Level 3 - 13.950m (RL:26.95)
- Level 2 - 9.650m (RL:22.65)
- Level 1 - 5.350m (RL:18.35)
- Alumni Green - 1.100m (RL:14.10)
- Thomas Street - Assumed Ground Level (AGL) (RL:13.00)
- Basement 1 (RL:8.50)
- Basement 2 (RL:2.70)
- Basement 3 (RL:-2.10)

THOMAS STREET PROPOSAL

CONSULTANT
 DURBACH BLOCK JAGGERS
 Level 2, 9 Roslyn St
 Potts Point NSW 2011
 tel: (02) 8297 3500
 fax: (02) 8297 3510



PROJECT
THOMAS ST BUILDING
 PROJECT APPLICATION
 MP09_0213



University of Technology, Sydney
 FACILITIES MANAGEMENT UNIT
 Tower, Building 1, Level 19, 15 Broadway
 Broadway NSW 2007
 Ph: 9514-2830 Fax: 9514-4690

Drawing Title
SOUTH (ALUMNI GREEN) ELEVATION

FMU Project Number

Drawn By CB	Checked	Approved By	Date App.
Drawing Scale @ A1 1:200	Drawing Status Project Application		
UTS Drg File Name	UTS Drg File No	Rev No 1	

Consultant File Number
1650•116