



- DA_001 GROUND FLOOR PLAN
- DA_002 LEVEL 01 FLOOR PLAN
- DA_003 BASEMENT FLOOR PLAN
- DA_004 ROOF PLAN
- DA_005 NORTH ELEVATION
- DA_006 TYPICAL CROSS SECTION
- DA_007 SITE ANALYSIS
- DA_008 CONTEXT PLAN
- DA_009 EXISTING SITE SURVEY
- DA_010 PERSPECTIVE VIEWS LAYOUT
- DA_011 NORTH EAST VIEW FROM AUSTRALIA AVENUE
- DA_012 NORTH EAST VIEW ALONG RIVERINA AVENUE
- DA_013 VIEW FROM GRAND PARADE ALONG SHOALHAVEN ST
- DA_014 VIEW FROM GRAND PARADE ALONG MONARO ST
- DA_015 VIEW FROM GRAND PARADE ALONG HUME ST
- DA_016 NORTH WEST VIEW FROM SHOWGROUND ROAD
- DA_017 INTERIOR VIEW TOWARDS AUSTRALIA AVENUE
- DA_018 NORTH EAST AREAL VIEW
- DA_019 NORTH WEST AREAL VIEW
- DA_020 MATERIALS

Cox Richardson

Level 2, 204 Clarence Street, Sydney 2000 Australia
 Tel : 612 9267 9599 Fax : 612 9264 5844
 Email : sydney@cox.com.au

Architecture Planning Urban design Interior design Health facility design



Sydney Olympic Park 

RAS/SOP Exhibition Expansion
 Homebush Bay

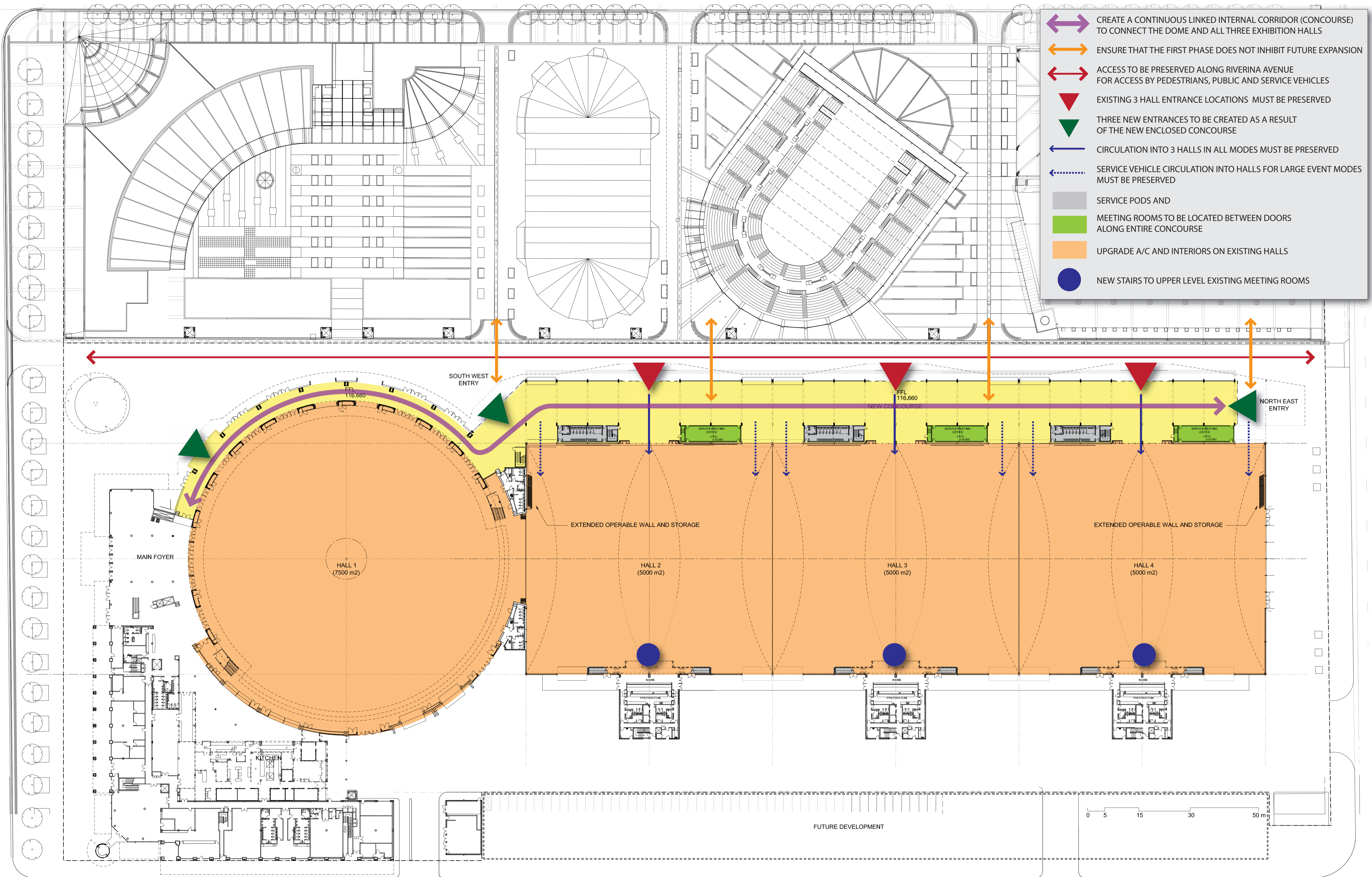
Drawing Title PART 3A SUBMISSION

DA_000 COVER SHEET

Scale

Date
 17.03.2010 [01]

The Cox Group Pty Ltd ACN 002 535 891



Cox Richardson

Level 2, 204 Clarence Street, Sydney 2000 Australia
 Tel : 612 9267 9599 Fax : 612 9264 5844
 Email : sydney@cox.com.au

Architecture Planning Urban design Interior design Health facility design



Sydney Olympic Park



RAS/SOP Exhibition Expansion
 Homebush Bay

Drawing Title PART 3A SUBMISSION

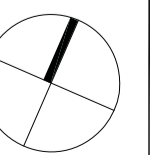
DA_007 SITE ANALYSIS

Scale

1:500

Date

17.03.2010 [02]



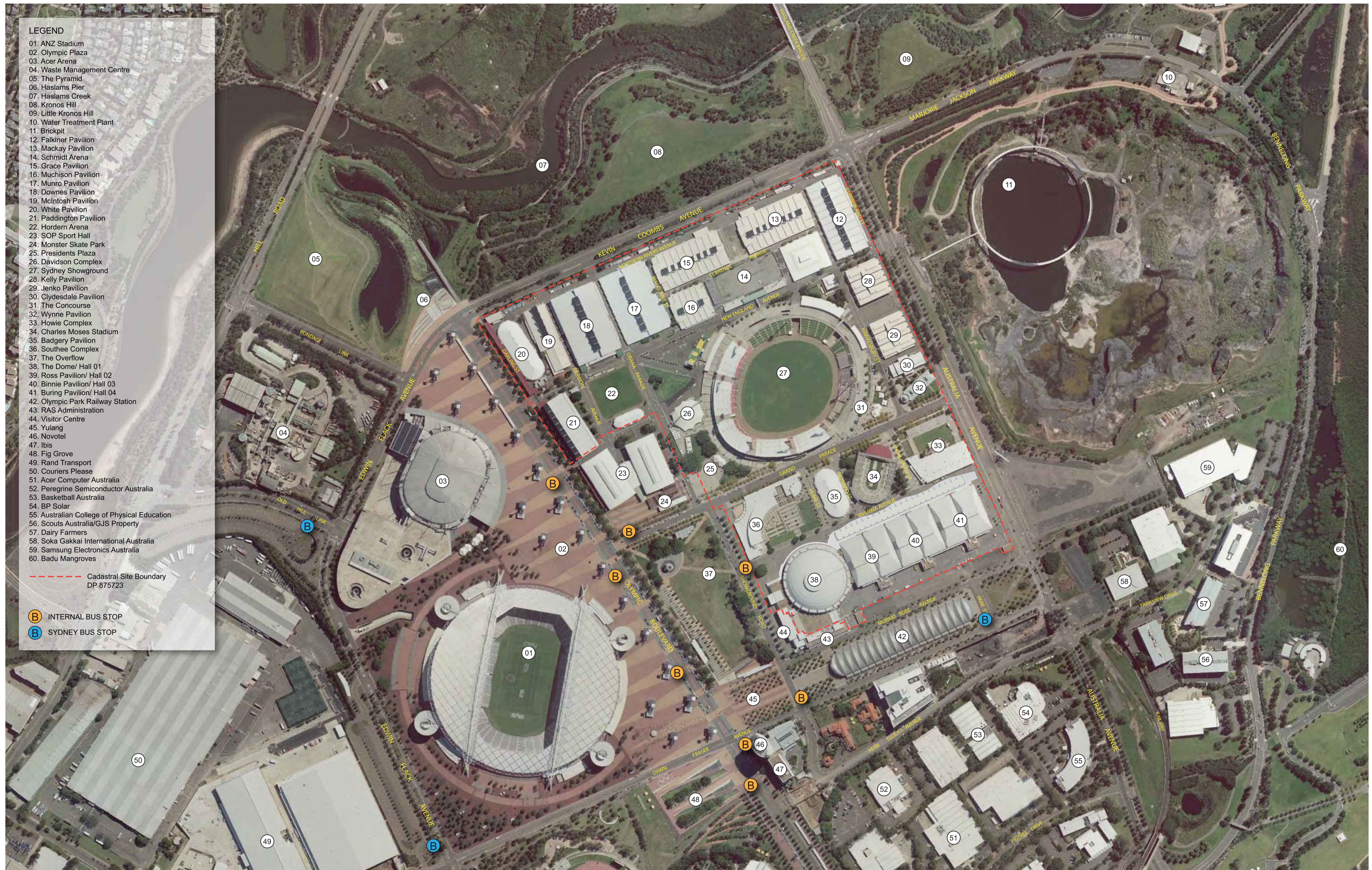
The Cox Group Pty Ltd ACN 002 535 891

LEGEND

- 01. ANZ Stadium
- 02. Olympic Plaza
- 03. Acer Arena
- 04. Waste Management Centre
- 05. The Pyramid
- 06. Haslams Pier
- 07. Haslams Creek
- 08. Kronos Hill
- 09. Little Kronos Hill
- 10. Water Treatment Plant
- 11. Brickpit
- 12. Falkiner Pavilion
- 13. Mackay Pavilion
- 14. Schmidt Arena
- 15. Grace Pavilion
- 16. Muchison Pavilion
- 17. Munro Pavilion
- 18. Downes Pavilion
- 19. McIntosh Pavilion
- 20. White Pavilion
- 21. Paddington Pavilion
- 22. Hordern Arena
- 23. SOP Sport Hall
- 24. Monster Skate Park
- 25. Presidents Plaza
- 26. Davidson Complex
- 27. Sydney Showground
- 28. Kelly Pavilion
- 29. Jenko Pavilion
- 30. Clydesdale Pavilion
- 31. The Concourse
- 32. Wynne Pavilion
- 33. Howie Complex
- 34. Charles Moses Stadium
- 35. Badgery Pavilion
- 36. Southco Complex
- 37. The Overflow
- 38. The Dome/ Hall 01
- 39. Ross Pavilion/ Hall 02
- 40. Binnie Pavilion/ Hall 03
- 41. Buring Pavilion/ Hall 04
- 42. Olympic Park Railway Station
- 43. RAS Administration
- 44. Visitor Centre
- 45. Yulang
- 46. Novotel
- 47. Ibis
- 48. Fig Grove
- 49. Rand Transport
- 50. Couriers Please
- 51. Acer Computer Australia
- 52. Peregrine Semiconductor Australia
- 53. Basketball Australia
- 54. BP Solar
- 55. Australian College of Physical Education
- 56. Scouts Australia/GJS Property
- 57. Dairy Farmers
- 58. Soka Gakkai International Australia
- 59. Samsung Electronics Australia
- 60. Badu Mangroves

--- Cadastral Site Boundary
DP 875723

- B INTERNAL BUS STOP
- B SYDNEY BUS STOP



Cox Richardson

Level 2, 204 Clarence Street, Sydney 2000 Australia
Tel : 612 9267 9599 Fax : 612 9264 5844
Email : sydney@cox.com.au

Architecture Planning Urban design Interior design Health facility design



Sydney Olympic Park

RAS/SOP Exhibition Expansion
Homebush Bay

Drawing Title PART 3A SUBMISSION

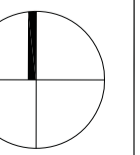
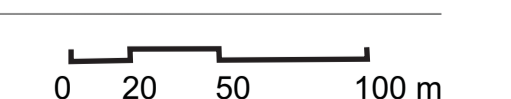
DA_008 CONTEXT PLAN

Scale

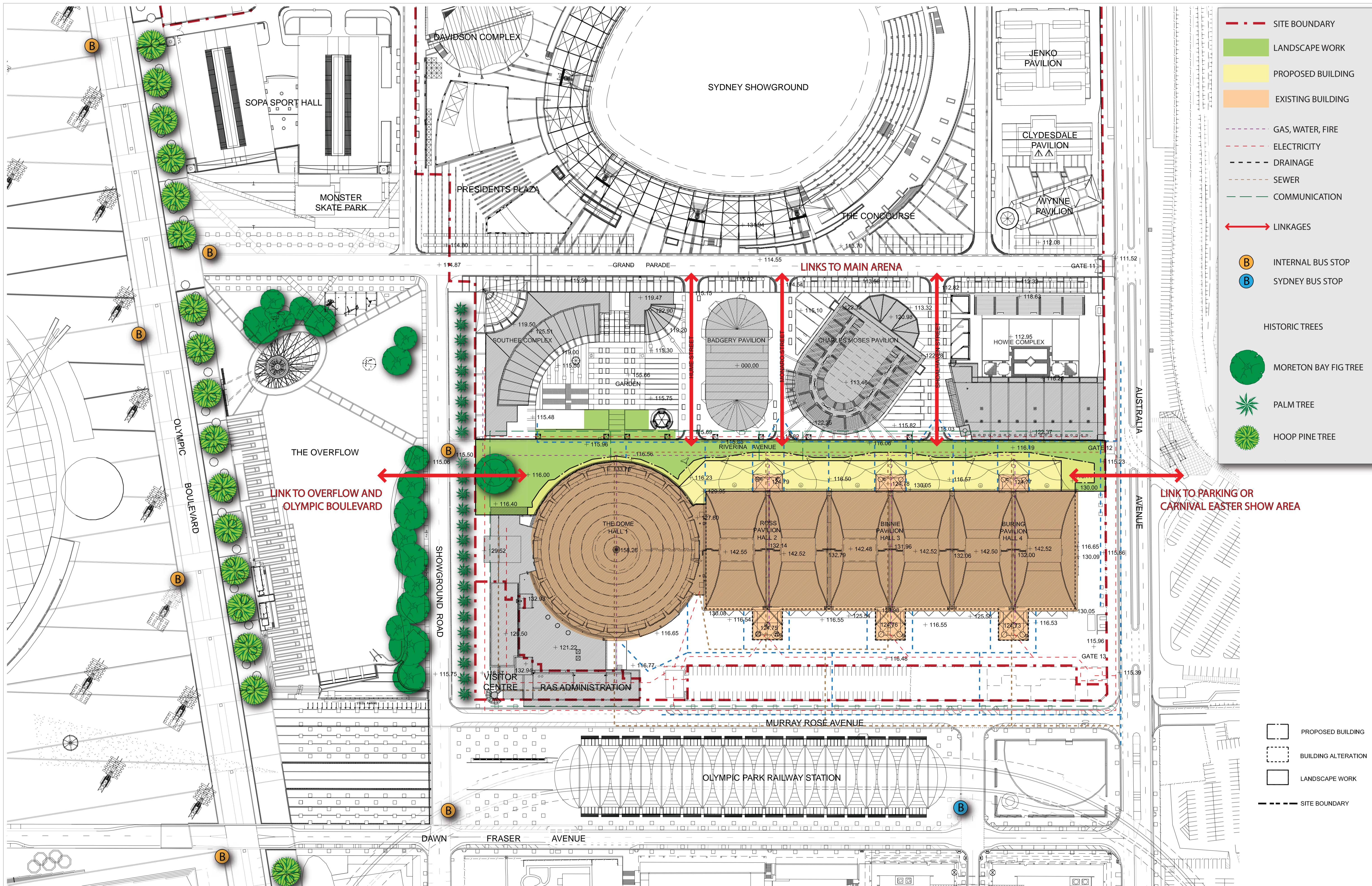
1:2500 @A1

Date

18.01.2010



The Cox Group Pty Ltd ACN 002 535 891



- - - SITE BOUNDARY
- LANDSCAPE WORK
- PROPOSED BUILDING
- EXISTING BUILDING
- - - GAS, WATER, FIRE
- - - ELECTRICITY
- - - DRAINAGE
- - - SEWER
- - - COMMUNICATION
- ↔ LINKAGES
- B INTERNAL BUS STOP
- B SYDNEY BUS STOP
- HISTORIC TREES
- MORETON BAY FIG TREE
- PALM TREE
- HOOP PINE TREE

- PROPOSED BUILDING
- BUILDING ALTERATION
- LANDSCAPE WORK
- SITE BOUNDARY

Cox Richardson
 Level 2, 204 Clarence Street, Sydney 2000 Australia
 Tel : 612 9267 9599 Fax : 612 9264 5844
 Email : sydney@cox.com.au



Sydney Olympic Park

RAS/SOP Exhibition Expansion

Homebush Bay

Drawing Title: PART 3A SUBMISSION
 DA_009 EXISTING SITE ASURVEY PLAN
 Scale: 1:1000
 Date: 17.03.2010 [01]

