

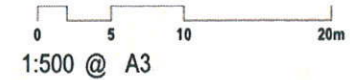
- RL +177.30 29 Plant
- RL +173.70 28 Type 4E- Penthouse
- RL +170.65 27 Type 4E
- RL +167.60 26 Type 4E
- RL +164.55 25 Type 4E
- RL +161.50 24 Type 3C
- RL +158.45 23 Type 3C
- RL +155.40 22 Type 3C
- RL +152.35 21 Type 3C
- RL +149.30 20 Type 3C
- RL +146.25 19 Type 3C
- RL +143.20 18 Type 3C
- RL +140.15 17 Type 3C
- RL +137.10 16 Type 3C
- RL +134.05 15 Type 3C
- RL +131.00 14 Type 2D
- RL +127.95 13 Type 2D
- RL +124.90 12 Type 2D
- RL +121.85 11 Type 2D
- RL +118.80 10 Type 2D
- RL +115.75 9 Type 1D
- RL +112.70 8 Type 1D
- RL +109.65 7 Type 1A- Overrun
- RL +106.60 6 Hotel D
- RL +103.55 5 Hotel C
- RL +100.50 4 Hotel B
- RL +97.45 3 Hotel B
- RL +94.40 2 Hotel A
- RL +90.05 0 Ground Floor
- RL +87.30 -2 Basement 1 Service
- RL +84.20 -2 Basement 2

SW GOVERNMENT Planning
 Issued under Environmental Planning and Assessment Act 1979
 Approved Application No. 09-0187
 MITCHELL ST
 CHRISTIE ST
 Sheet No. 28 of 31

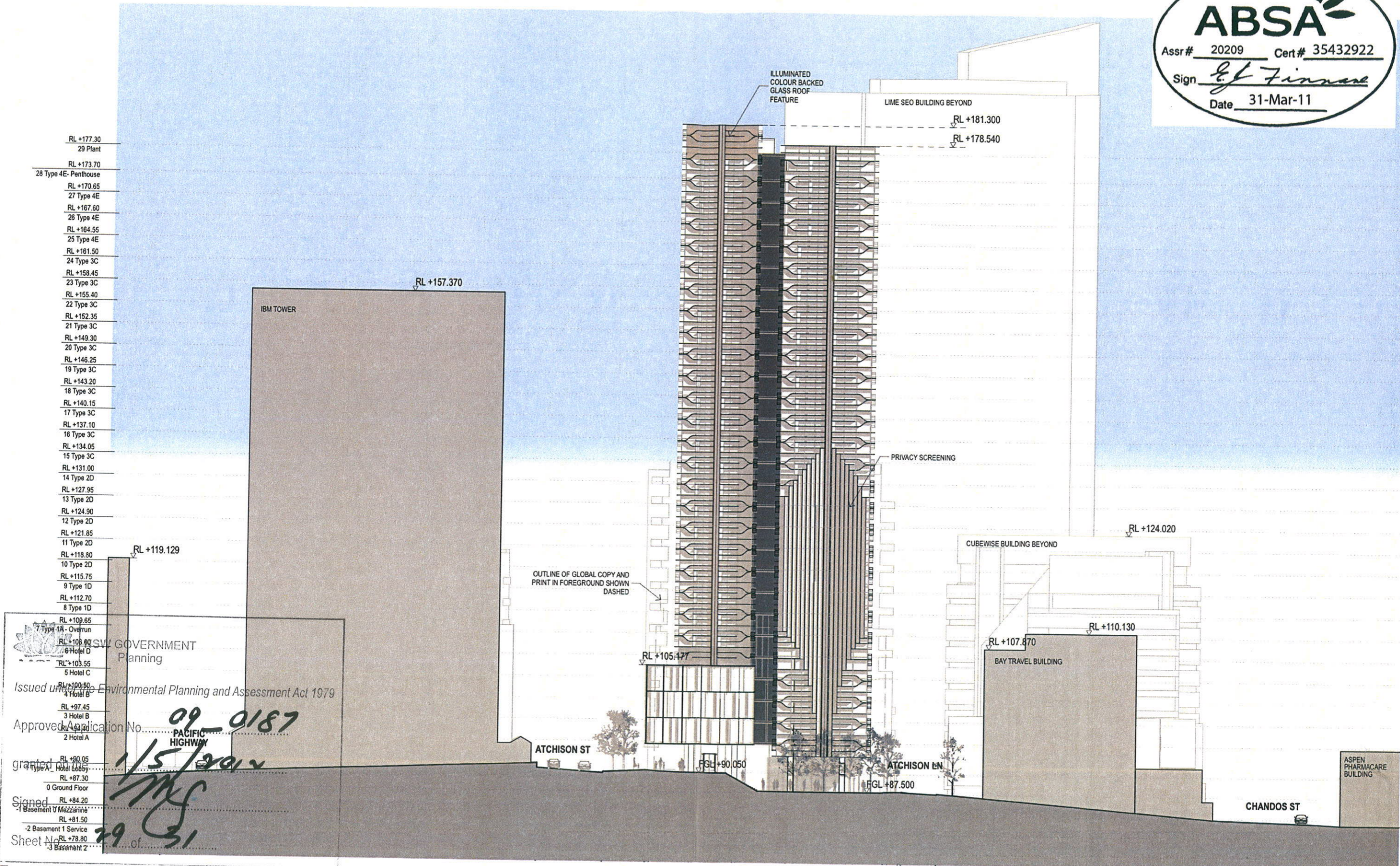


francis-jones morehen thorp

North Elevation



APRIL 2011



NSW GOVERNMENT Planning
 Issued under the Environmental Planning and Assessment Act 1979
 Approved Application No. 09-0187
 granted on 1/5/2011
 Signed MJS
 Sheet No. 29 of 31



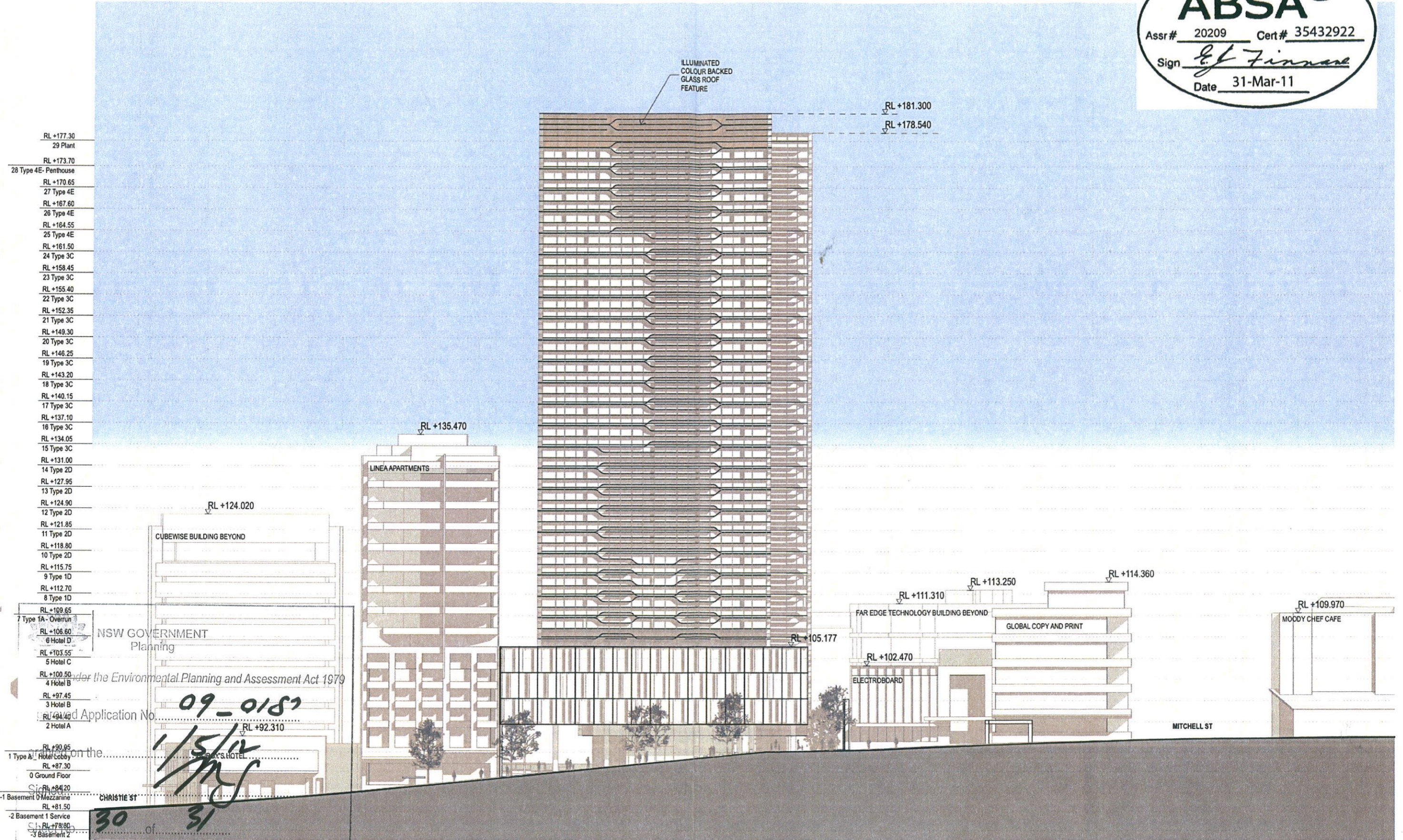
francis-jones morehen thorp

East Elevation



Proposed Mixed Use Redevelopment - 6-16 Atchison St, St Leonards

PA-300-02



South Elevation

