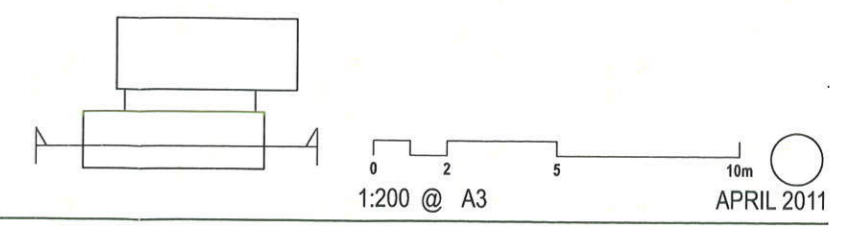


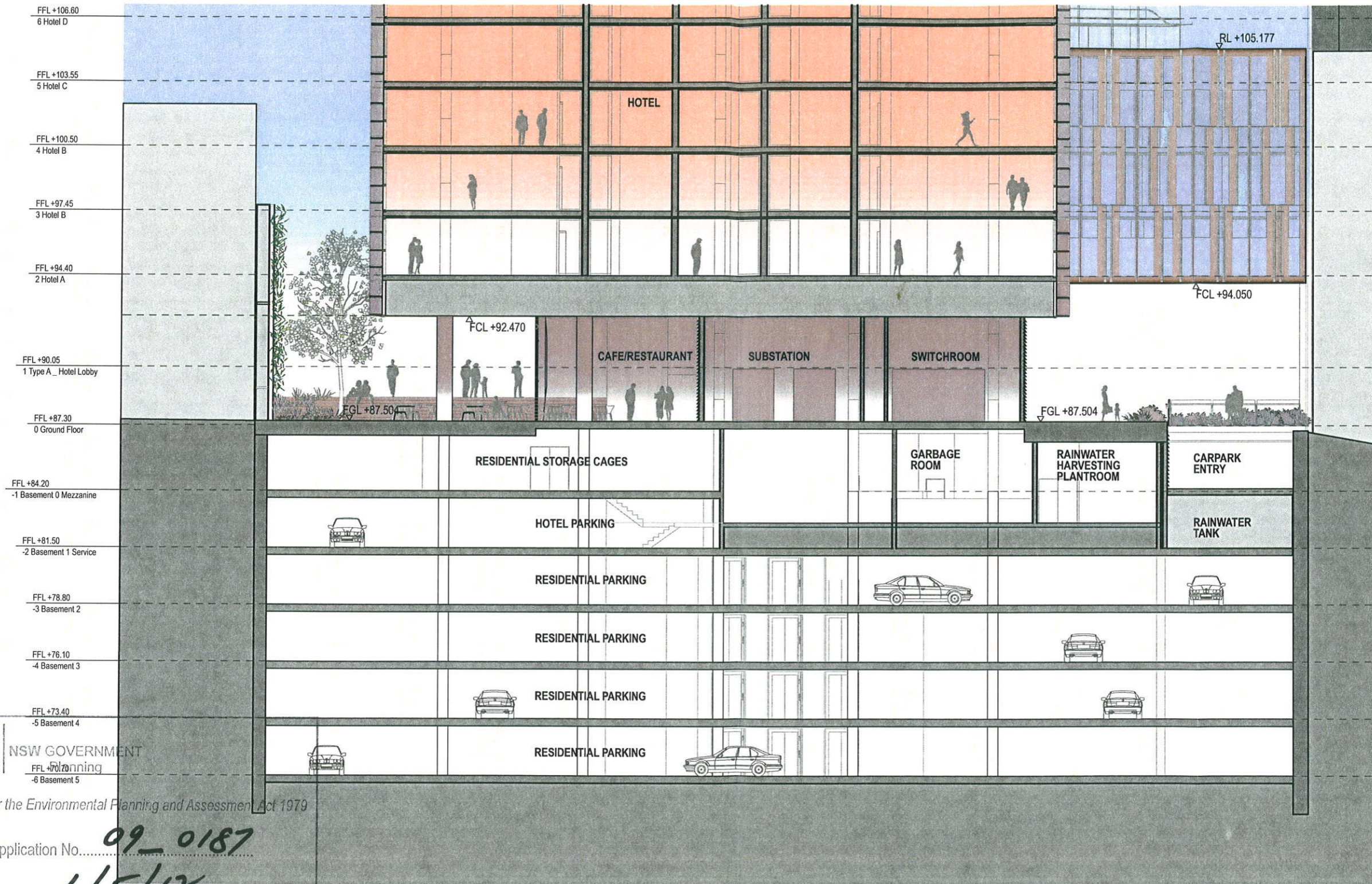
NSW GOVERNMENT  
 Planning  
 Issued under the Environmental Planning and Assessment Act 1979  
 Approved Application No. **09-0187**  
 granted on the **1/5/12**  
 Signed **[Signature]**  
 Sheet No. **21** of **31**



**Podium Atchison St EW**

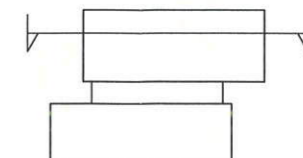
Proposed Mixed Use Redevelopment - 6-16 Atchison St, St Leonards

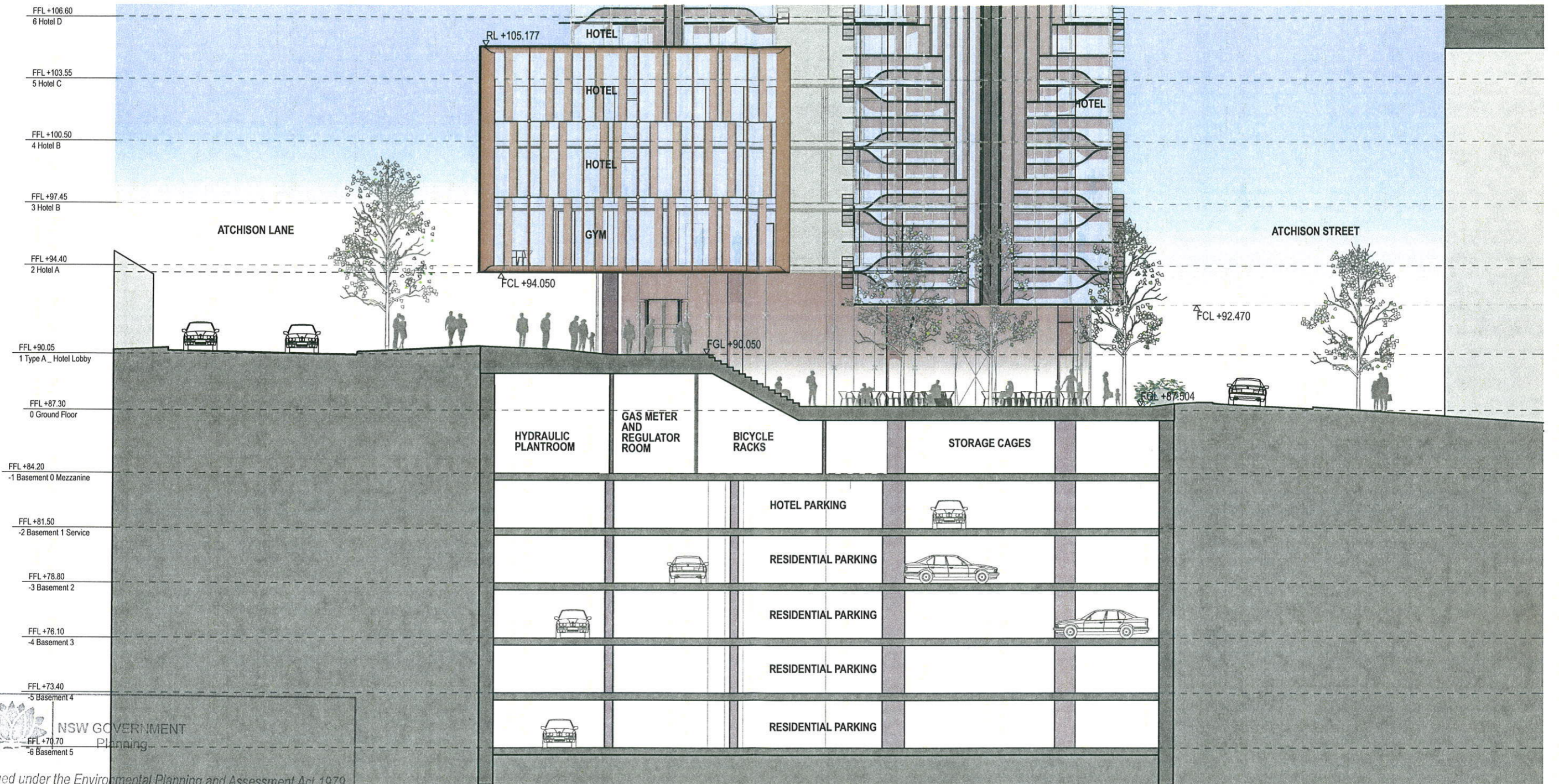




**Podium Atchison Lane EW**

Proposed Mixed Use Redevelopment - 6-16 Atchison St, St Leonards



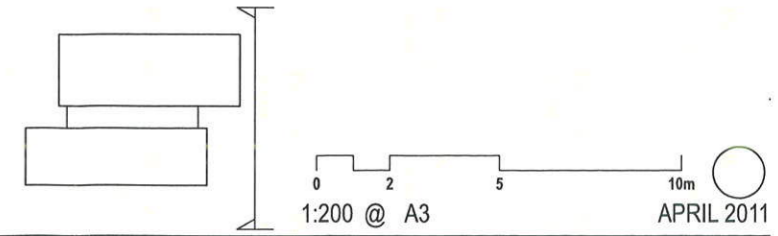


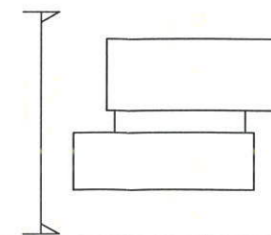
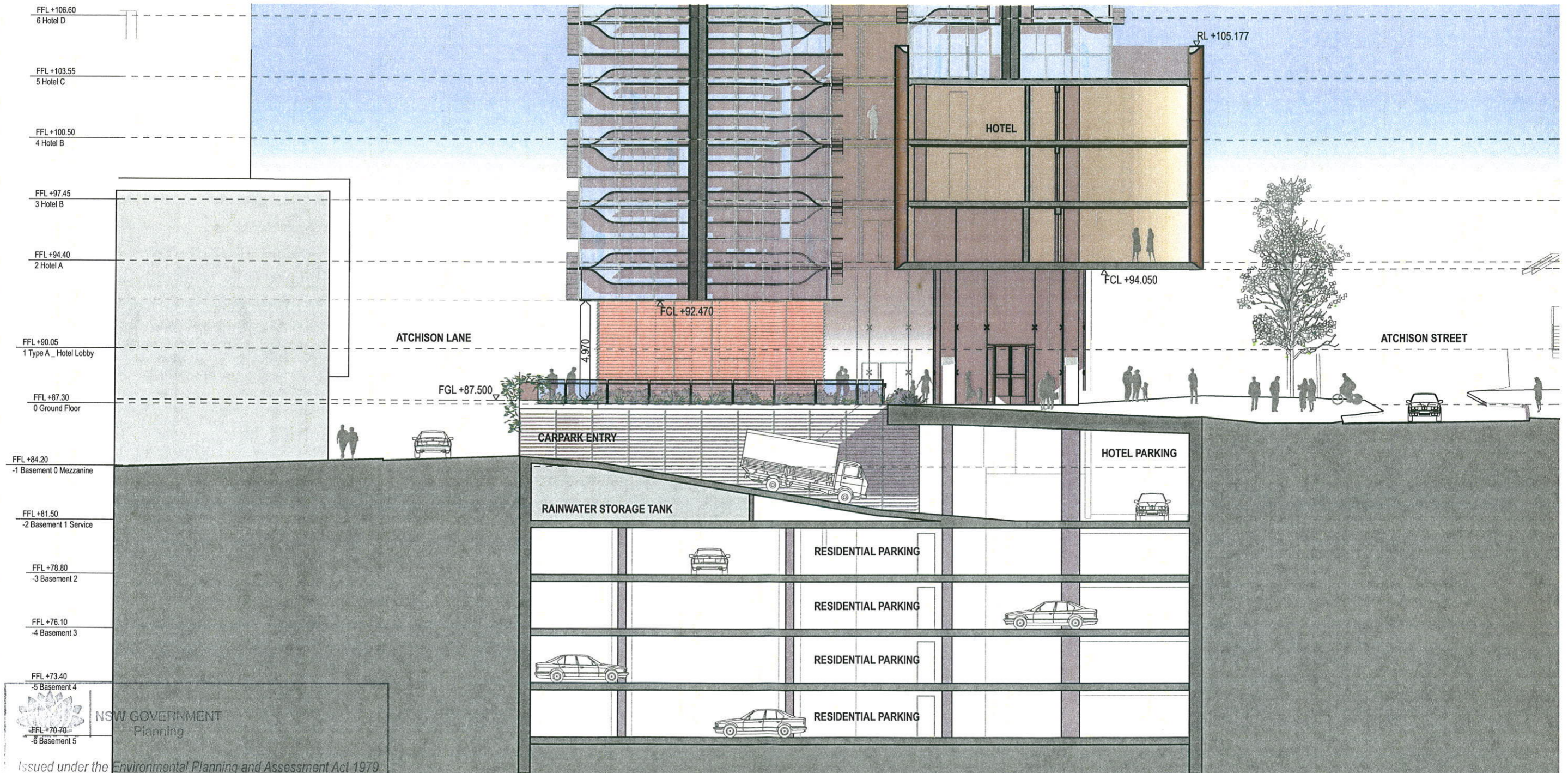
NSW GOVERNMENT  
 Planning  
 Issued under the Environmental Planning and Assessment Act 1979  
 Approved Application No. **09-0187**  
 granted on the **1/5/12**  
 Signed *[Signature]*  
 Sheet No. **23** of **31**

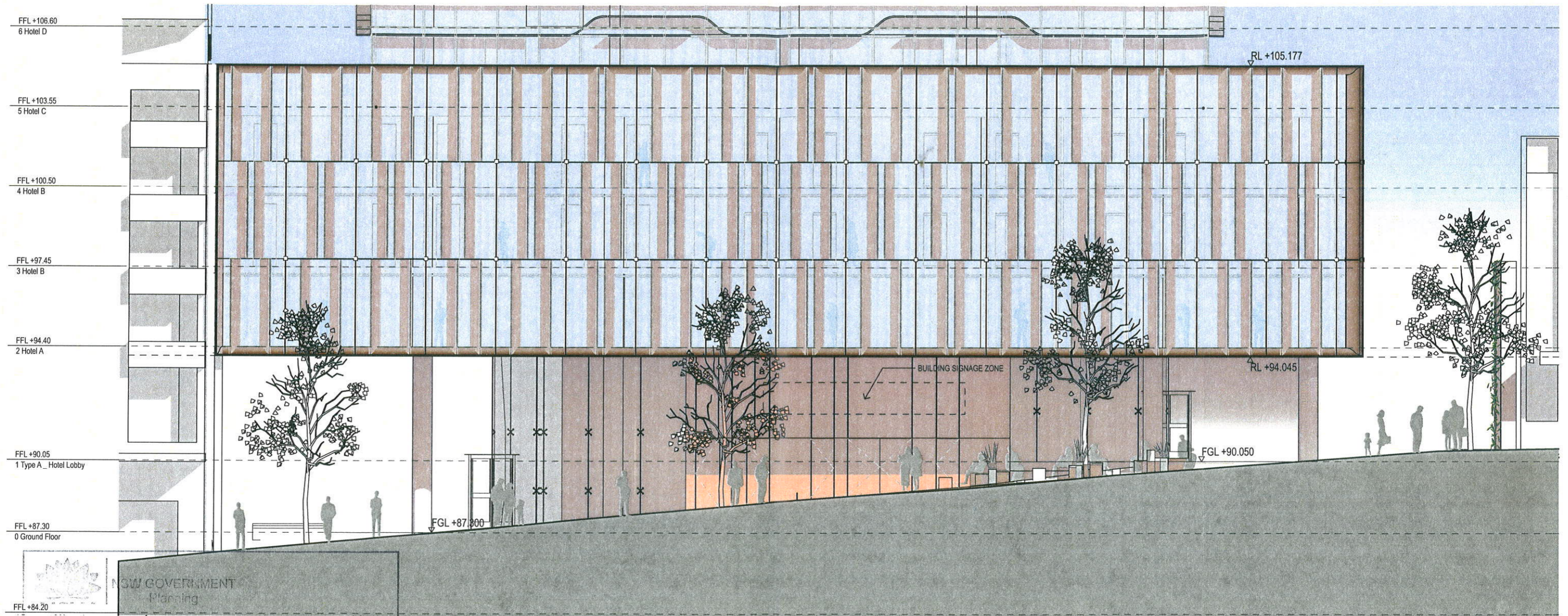


**Public Domain Cafe NS**

Proposed Mixed Use Redevelopment - 6-16 Atchison St, St Leonards







issued under the Environmental Planning and Assessment Act 1979

Approved Application No. 09-0187

granted on the 1/15/12

Signed [Signature]

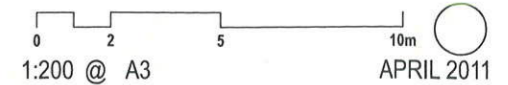
Sheet No. 25 of 31



francis-jones morehen thorp

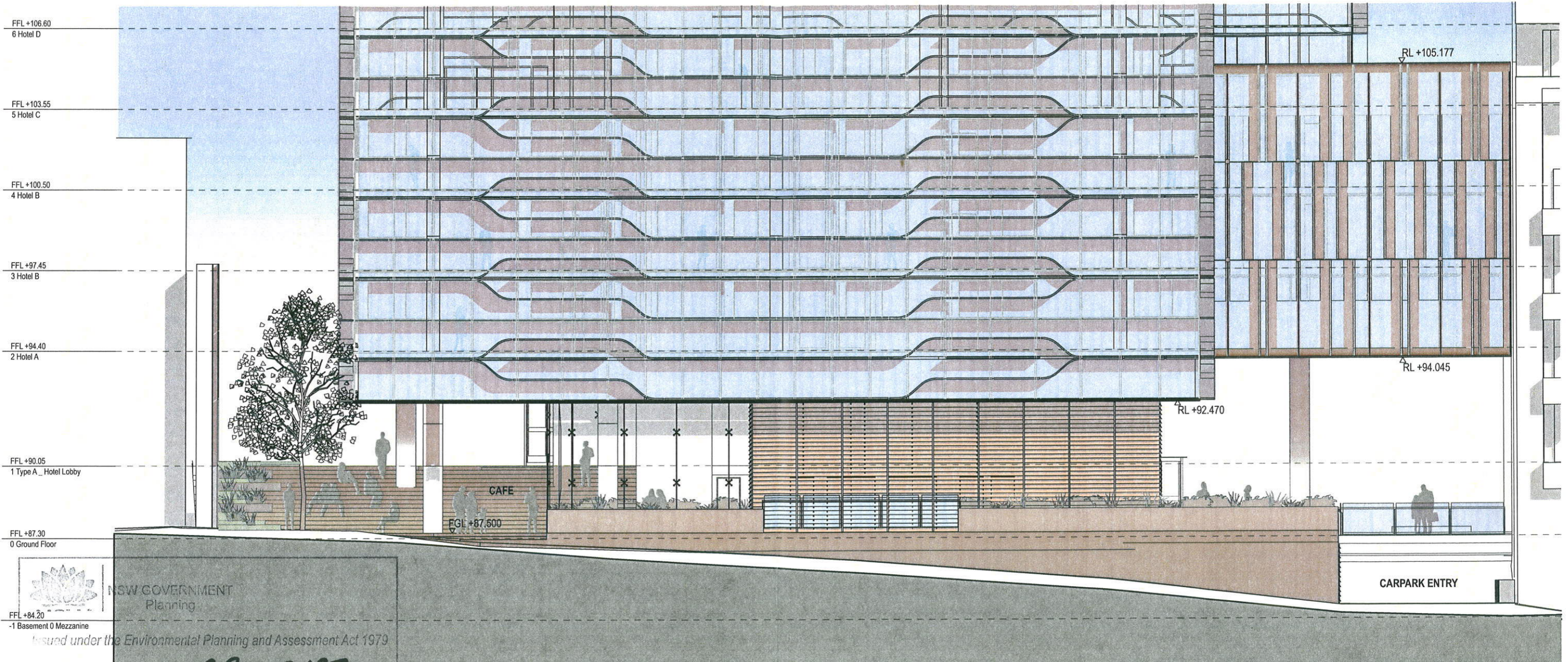
### Public Domain Atchison Street Elevation

Proposed Mixed Use Redevelopment - 6-16 Atchison St, St Leonards



APRIL 2011

PA-210-05



NSW GOVERNMENT  
Planning

Issued under the Environmental Planning and Assessment Act 1979

Approved Application No. 09-0187

granted on the 1/5/12

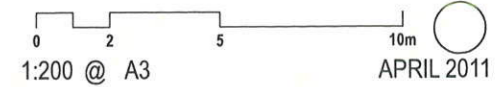
Signed [Signature]

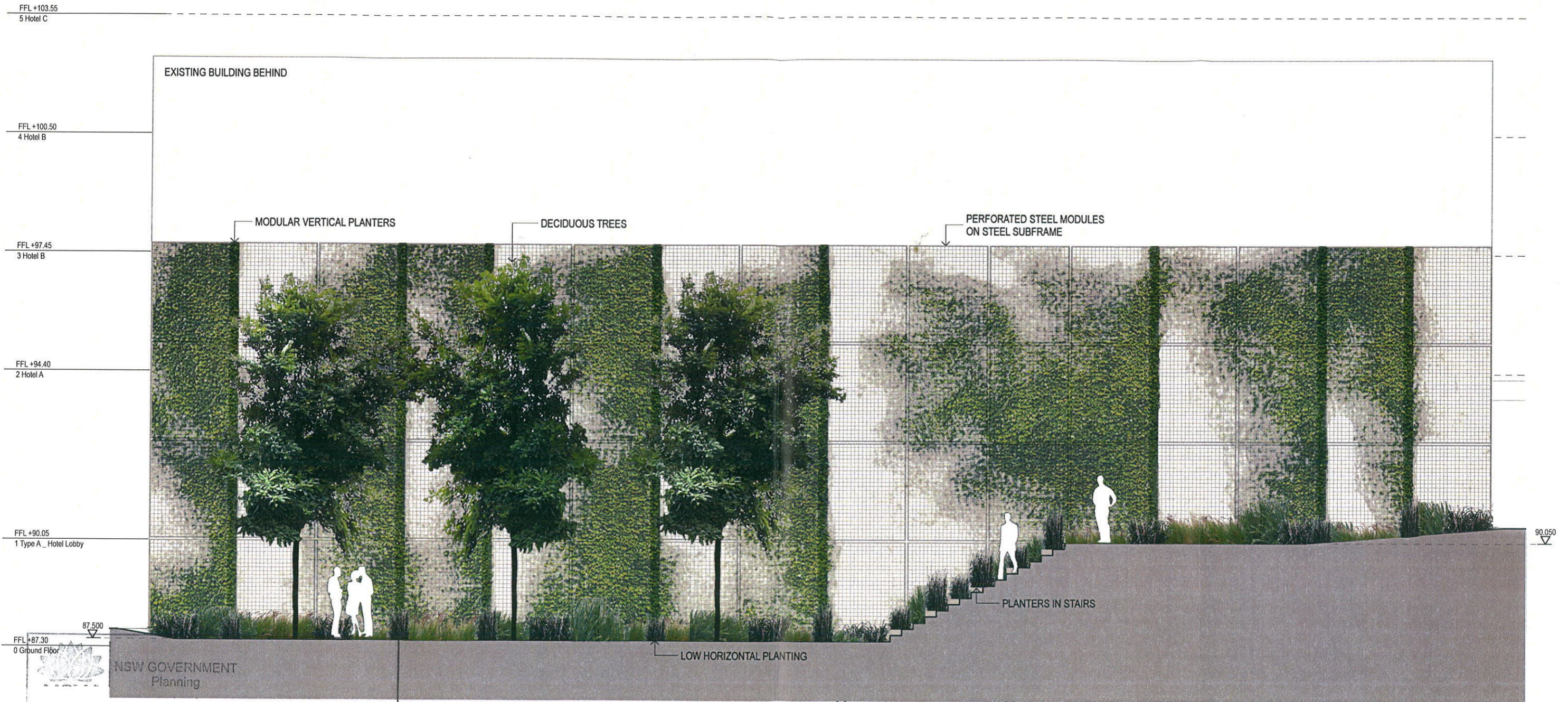
Sheet No. 26 of 31



**Public Domain Atchison Lane Elevation**

Proposed Mixed Use Redevelopment - 6-16 Atchison St, St Leonards





Issued under the Environmental Planning and Assessment Act 1979

Approved Application No. 09-0187

granted on the 1/5/12

Signed [Signature]

Sheet No. 27 of 31



Green Wall Elevation

