

NSW GOVERNMENT  
 Planning  
 PA 210-01

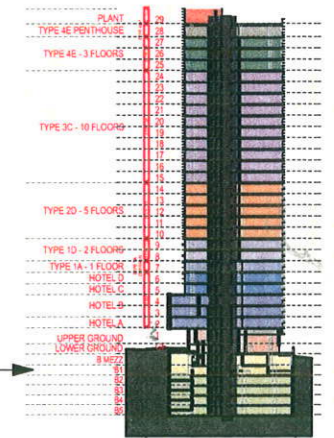
Issued under the Environmental Planning and Assessment Act 1979

Approved Application No. **09-0187**

granted on the **1/5/12**

Signed *[Signature]*

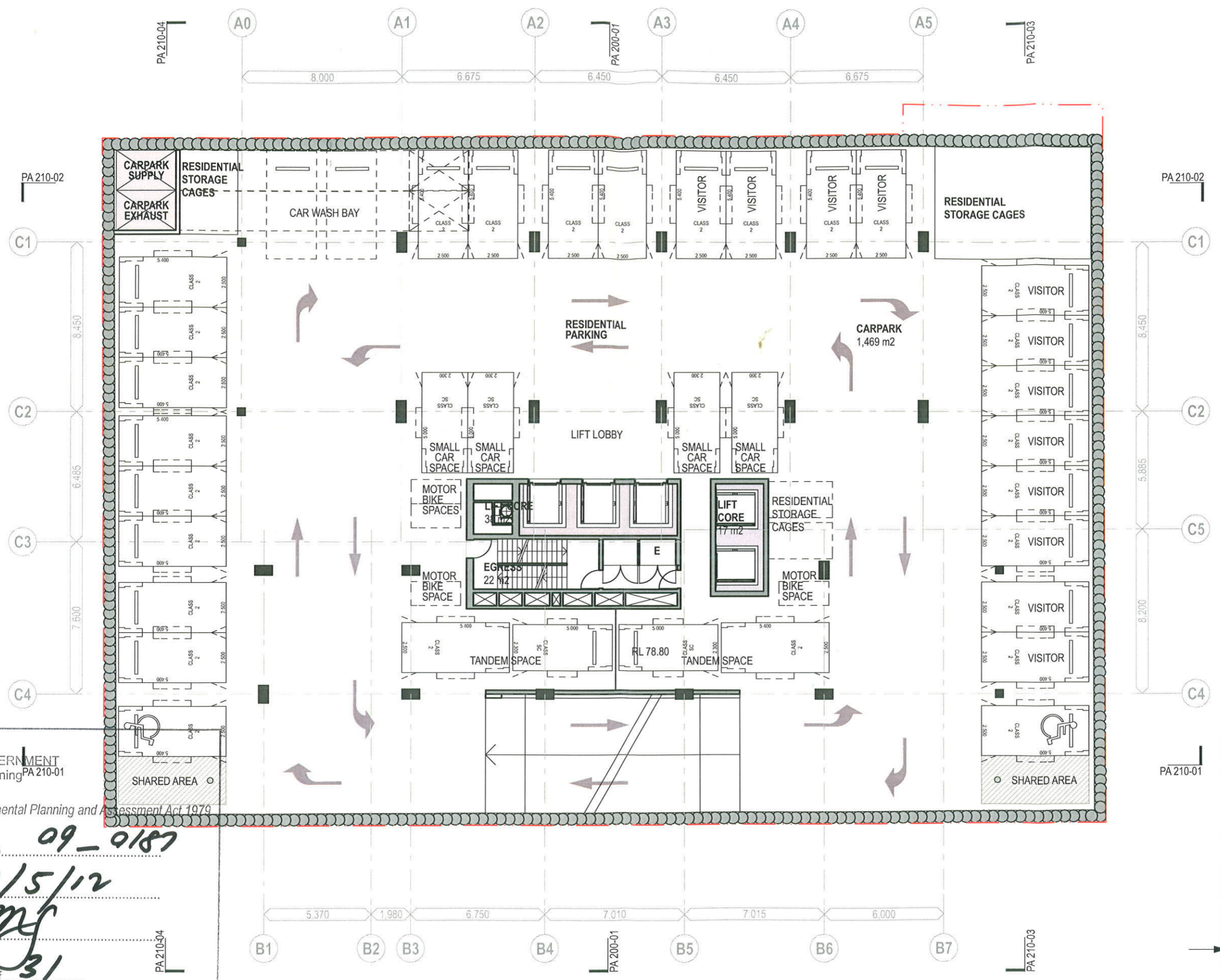
Sheet No. **16** of **31**



**Basement Loading Dock B1**

Proposed Mixed Use Redevelopment - 6-16 Atchison St, St Leonards

Scale: 1:200 @ A3  
 Date: APRIL 2011



NSW GOVERNMENT  
 Planning PA 210-01

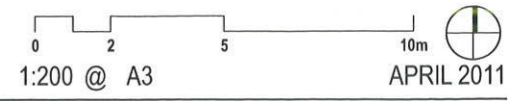
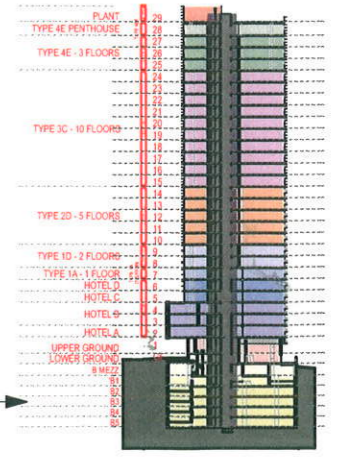
Issued under the Environmental Planning and Assessment Act 1979

Approved Application No. **09-9187**

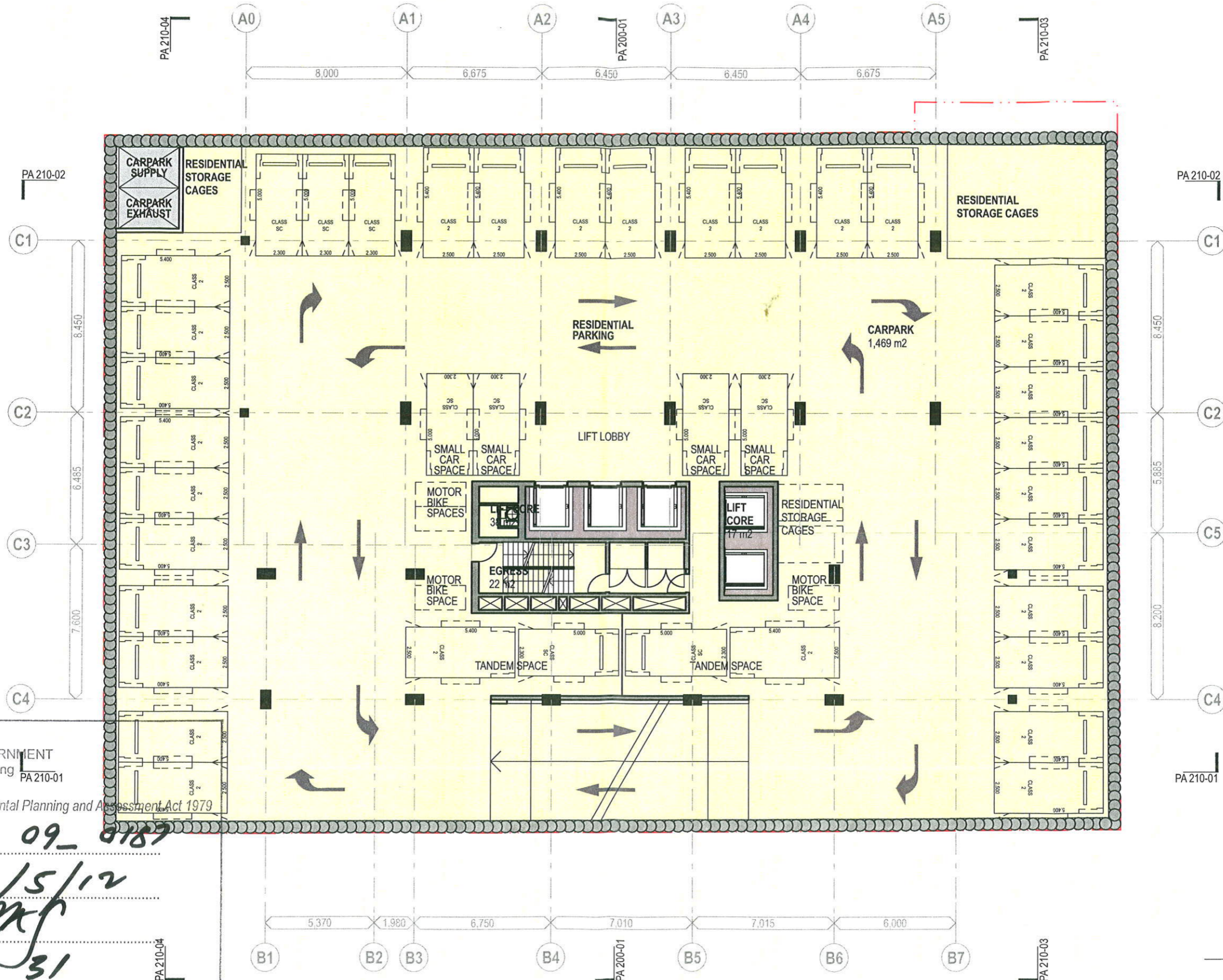
granted on the **1/5/12**

Signed *[Signature]*

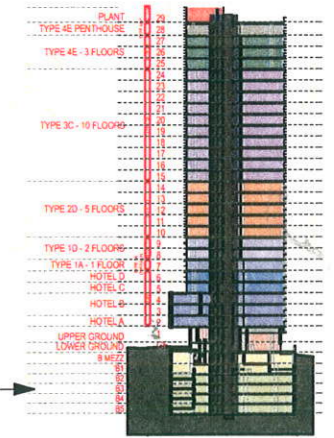
Sheet No. **17** of **31**



**Basement Level B2**

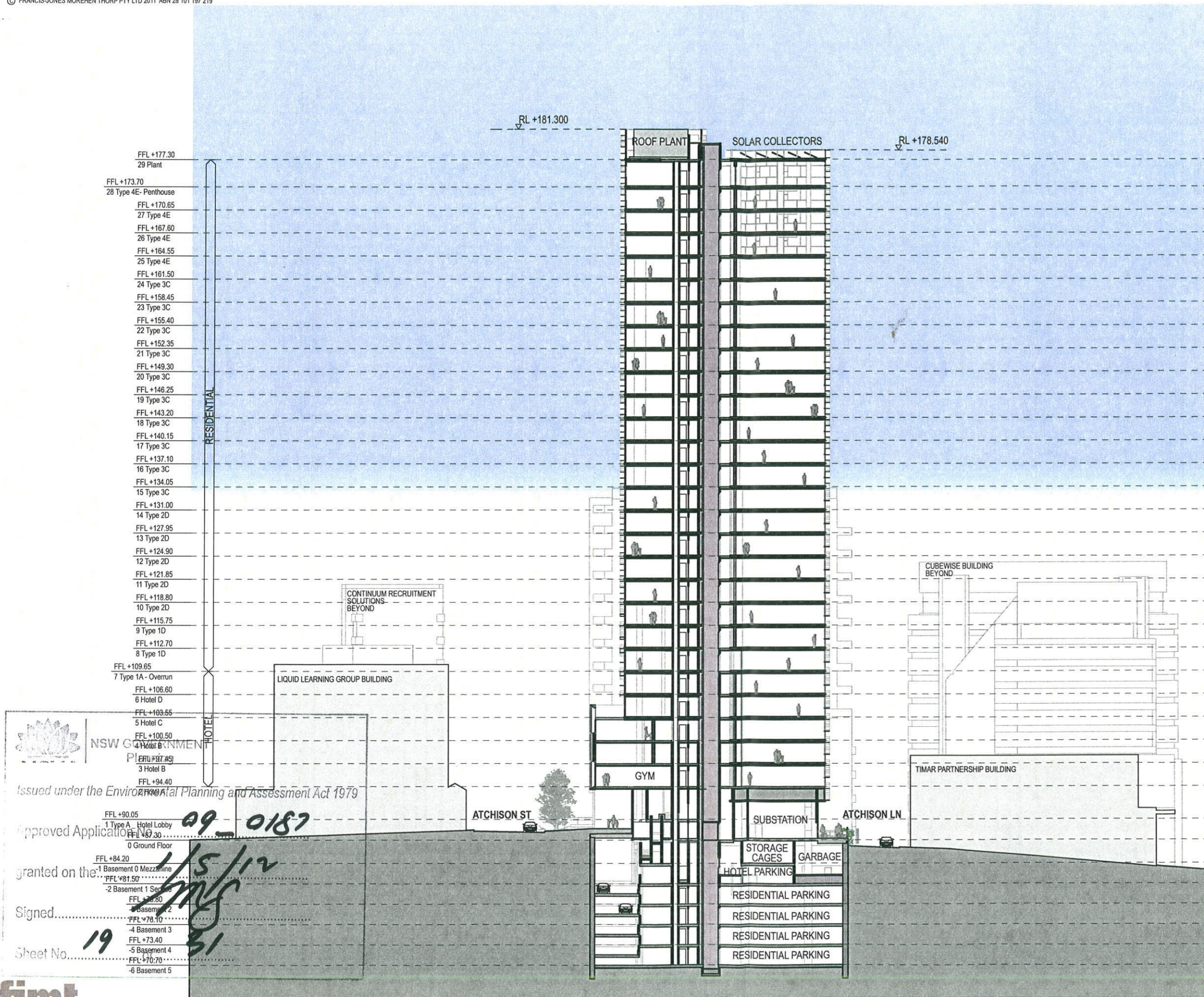


NSW GOVERNMENT  
 Planning  
 PA 210-01  
 Issued under the Environmental Planning and Assessment Act 1979  
 Approved Application No. 09-8187  
 granted on the 1/5/12  
 Signed [Signature]  
 Sheet No. 18 of 31



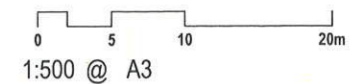
**Basement Typical Levels B3-B5**

1:200 @ A3  
 APRIL 2011



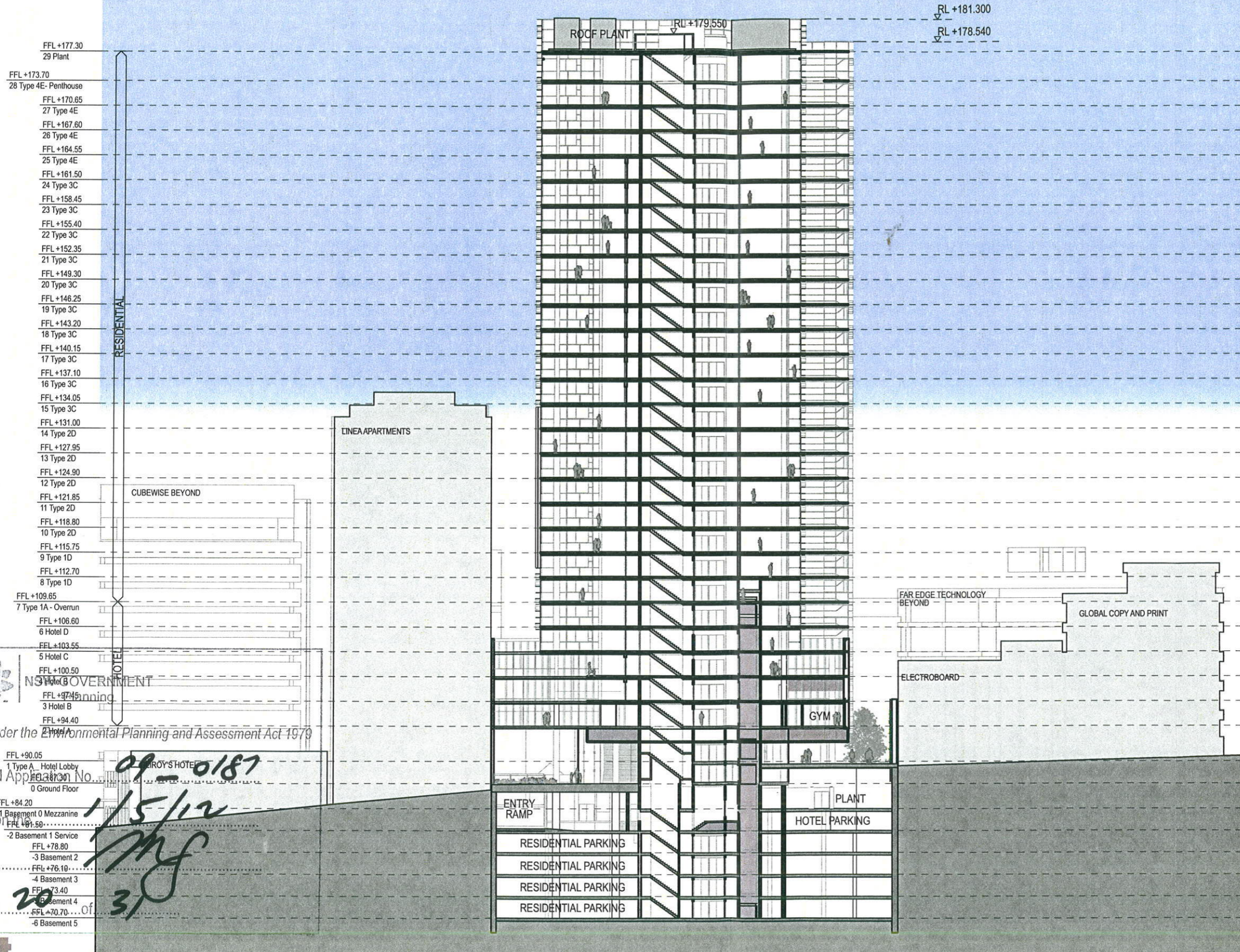
NSW GOVERNMENT  
 Planning  
 Issued under the Environmental Planning and Assessment Act 1979  
 Approved Application No. 09\_0187  
 granted on the 1/5/12  
 Signed [Signature]  
 Sheet No. 19 of 31

North-South Section



APRIL 2011



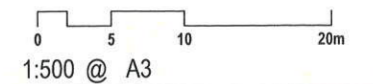


Issued under the Environmental Planning and Assessment Act 1979

Approved Application No. 09-0187  
 granted on 1/5/12  
 Signed [Signature]  
 Sheet No. 22 of 31



East-West Section



APRIL 2011