

# RAVENSWORTH OPEN CUT

---

GLENCORE

*Plan for*

## Aboriginal Cultural Heritage Management Plan

**Document Number:** RAV SD PLN 0063

**Status:** Approved

**Version:** 3.0

**Effective:** XX/XX/2019

**Review:** XX/XX/2024

**Owner:** Environment & Community Manager

## Table of Contents

<b>1</b>	<b>Introduction.....</b>	<b>5</b>
1.1	Purpose of this plan .....	5
1.2	Background .....	5
1.3	New elements of this revised plan .....	5
1.4	The Project.....	6
1.4.1	Project background .....	6
1.5	Previous Aboriginal Site Salvage.....	10
1.5.1	Stage 1 Salvage.....	10
1.5.2	Second Stage of Salvage .....	10
<b>2</b>	<b>Scope.....</b>	<b>11</b>
2.1	Management of Aboriginal heritage values.....	11
2.2	Aboriginal sites.....	11
2.3	Aboriginal heritage management areas .....	11
2.4	Identification and management of Aboriginal heritage values in Biodiversity Offset Areas.....	11
2.5	Project Approval conditions .....	11
2.6	Review cycle for this plan.....	13
2.6.1	Making changes to this Plan .....	13
<b>3</b>	<b>Aboriginal Cultural Heritage Values .....</b>	<b>14</b>
3.1	Socio-cultural values .....	14
3.1.1	Value of Aboriginal sites .....	14
3.1.2	Conflict history.....	14
3.1.3	Cultural values assessment.....	14
3.2	Aboriginal sites.....	15
3.3	Management areas within the Project area .....	15
3.3.1	Ravensworth North Conservation Area .....	16
3.3.2	Farrells Creek 1 Aboriginal Artefact Management Area.....	16
3.4	Management areas outside Project area .....	16
<b>4</b>	<b>Management Strategy .....</b>	<b>17</b>
4.1	Aboriginal heritage impacts.....	17
4.2	Strategy .....	17
4.3	Aboriginal heritage salvage programs .....	17
4.4	Protection measures for stone artefact sites.....	18
4.5	Protection measures for REA86 Grinding Groove site .....	19
4.6	Scarred tree management .....	20
4.7	Salvage measures .....	20
4.7.1	Analysis of artefacts from the stage 1 salvage program .....	20

4.8	Management areas outside the Project area .....	21
4.8.1	Management of Aboriginal Sites within Offset Areas .....	21
4.9	Monitoring of Aboriginal sites in protected areas .....	22
4.10	Management areas within the Project area .....	22
<b>5</b>	<b>Aboriginal Community Consultation .....</b>	<b>27</b>
5.1	RAPs consulted.....	27
5.2	Consultation process for the EA .....	27
5.3	Consultation in developing this plan .....	27
5.4	Ongoing consultation protocols.....	27
5.4.1	All RAPs to be kept informed.....	27
5.4.2	Acknowledgement and Welcome .....	27
5.4.3	Access to Aboriginal sites and stored Aboriginal objects.....	28
5.4.4	Aboriginal involvement in Aboriginal heritage management measures.....	28
5.5	Complaints protocol .....	29
<b>6</b>	<b>Operational and Training Protocols.....</b>	<b>31</b>
6.1	Obligation to protect Aboriginal cultural heritage .....	31
6.1.1	Obligation to avoid harm .....	31
6.1.2	Obligation to protect.....	31
6.1.3	Obligation to implement management measures for Aboriginal heritage impacts .....	31
6.1.4	Aboriginal heritage induction and permitting process .....	31
6.2	Implementation of this Plan.....	32
6.3	Measuring performance .....	32
<b>7</b>	<b>Aboriginal Heritage Protection.....</b>	<b>33</b>
7.1	Measures to protect Aboriginal sites .....	33
7.2	Fencing.....	33
7.3	Land management .....	33
7.3.1	Erosion control .....	33
7.3.2	Bushfire hazard reduction .....	33
7.3.3	Exclusion of stock .....	33
7.3.4	Weed control .....	34
7.4	Interpretation panels .....	34
7.5	Digital recording .....	34
7.6	Photographic monitoring .....	35
7.7	Interim Keeping Place .....	36
7.7.1	What is a Keeping Place? .....	36
7.7.2	Location and security .....	36
7.7.3	All Aboriginal objects and records .....	36
7.7.4	Duration of care.....	37
<b>8</b>	<b>Detailed Procedures.....</b>	<b>37</b>
8.1	Discovery of Aboriginal ancestral remains.....	37
8.2	Discovery of new Aboriginal sites .....	37
<b>9</b>	<b>Aboriginal Site Salvage Methods .....</b>	<b>38</b>
9.1	Salvage scope.....	38

9.2	Salvage Collection .....	38
9.3	Excavation Programs .....	38
9.4	Salvage Consultation .....	39
9.5	Salvage Analysis .....	39
9.6	Salvage Report .....	39
9.7	Curation of Salvage Artefacts .....	40
<b>10</b>	<b>Record Keeping and Reporting Requirements .....</b>	<b>40</b>
10.1	Project records .....	40
10.2	Statutory reporting requirements .....	40
10.2.1	Discovery of Aboriginal objects .....	40
10.2.2	Care and Control Permit application .....	40
10.2.3	Reporting impact to Aboriginal sites .....	40
10.2.4	Reporting of ACHMP non-compliance incident .....	40
<b>11</b>	<b>References .....</b>	<b>41</b>
<b>12</b>	<b>Definitions .....</b>	<b>43</b>
<b>13</b>	<b>Document Information .....</b>	<b>45</b>
13.1	Related Documents .....	45
13.2	Reference Information .....	45
13.3	Change Information .....	45
<b>Appendix A - Ravensworth Aboriginal Sites .....</b>		<b>46</b>
<b>Appendix B - Aboriginal Consultation for 2014 ACHMP .....</b>		<b>67</b>
<b>Appendix C - New Sites .....</b>		<b>70</b>
<b>Appendix D - Consultation and Correspondence .....</b>		<b>76</b>
<b>Appendix E - Document Approval .....</b>		<b>77</b>

# 1 Introduction

This Aboriginal Cultural Heritage Management Plan (ACHMP or “the plan”) documents procedures for management of Aboriginal cultural heritage values associated with the Ravensworth Complex Project (the Project) under Project Approval (PA) 09\_0176 [the PA] and Development Consent Approval (DA) 104/96.

## 1.1 Purpose of this plan

This plan:

- details the management procedures for Aboriginal heritage within the Project area and Biodiversity Offset Areas (Offset Areas);
- details reporting requirements;
- presents a detailed process for ongoing Aboriginal consultation;
- outlines the obligations of Project personnel to protect Aboriginal sites not subject to approved harm;
- describes the roles and responsibilities of Project staff in managing Aboriginal heritage sites before and after salvage works; and
- provides for continuous improvement through auditing and plan modification.

The manner in which this plan addresses each of the statutory requirements of the PA and DA104/96 is detailed further below in Section 2.5.

## 1.2 Background

An Aboriginal heritage assessment for the Project was completed in 2010 (Umwelt 2010) as part of the environmental assessment (EA). The Project was approved in 2011 (the PA dated 11 February 2011) and subsequently modified in August 2013, December 2014 and February 2016. An initial ACHMP was subsequently prepared by Umwelt (Australia) Pty Ltd (Umwelt) in 2011 (Umwelt 2011a) describing the scope of an initial “stage 1” salvage and Aboriginal site management works.

In 2014, Baker Archaeology Pty Ltd produced a revised ACHMP for Ravensworth Operations (Baker 2014). The 2014 ACHMP described the scope for the final stage of salvage under the PA.

A further revision to the ACHMP was prepared by Ravensworth Complex in September 2018 (see Section 13).

The 2014 ACHMP recommended regular revision of the plan. This document provides an updated version in accordance with section 1.7 of the 2014 approved version. The previous versions (2011, 2014 and 2018) are retained on file at Ravensworth Complex as a record of past consultation.

The Ravensworth Underground Mine Aboriginal Cultural Heritage Management Plan was prepared to comply with Condition 26 of DA104/96 MOD 9. The area covered by former Ravensworth Underground Mine (RUM) ACHMP (OzArk 2012) and has since been incorporated into this Ravensworth Complex ACHMP, making the RUM ACHMP subsidiary to this document.

## 1.3 New elements of this revised plan

Regular revision of this plan was anticipated in previous versions of the plan. Revision has been conducted in accordance with section 2.6 of the 2018 approved version.

This revised plan builds on previous ACHMPs by:

- including reference to Aboriginal sites recorded and assessed after its completion;
- including reference to the management of Aboriginal sites recorded and assessed in Project Offset Areas;
- describing the scope and methods for the salvage of any Aboriginal sites required to facilitate the Project and associated activities; and
- accounting for Aboriginal site salvage works undertaken to date for the Project.

## 1.4 The Project

### 1.4.1 Project background

Ravensworth Complex is comprised of the former Ravensworth West Mine and Narama Mine located between Singleton and Muswellbrook NSW. There has been an extended history of mining operations in this area since the 1970s. Current mining operations, including the former Ravensworth West Mine and Narama Mine, have been operating since the early 1990s.

Ravensworth Complex has undertaken extensive coal exploration within its mining leases, which has identified a significant coal resource within the Ravensworth area. The extent of this resource indicates sufficient reserves to enable continuation of open cut mining operations until 2039.

The Project proposes to access these coal resources through continued open cut mining within its existing mine leases and approvals and access of additional mining areas, to provide for continued mining operations until 2039. The Project includes the integration of a number of existing operations, including Narama, the former Ravensworth West, Cumnock and Ravensworth Underground Mines. The Project area shown within Figure 1, totals approximately 5,589 hectares.

The Project entailed the establishment of State and Federal Offset Areas in order to mitigate the potential impacts on biodiversity within the Project area. The following Offset Areas identified in the PA have been established in relation to the mining operations at Ravensworth Complex and the management of Aboriginal cultural heritage values within these areas is addressed within this plan:

- Ravensworth North Offset Area;
- Hillcrest Offset Area;
- Clifton Offset Area; and the
- Stewart Offset Area.

The location of these areas are shown on Figure 2, Figure 3 and are described further in Section 3.4.



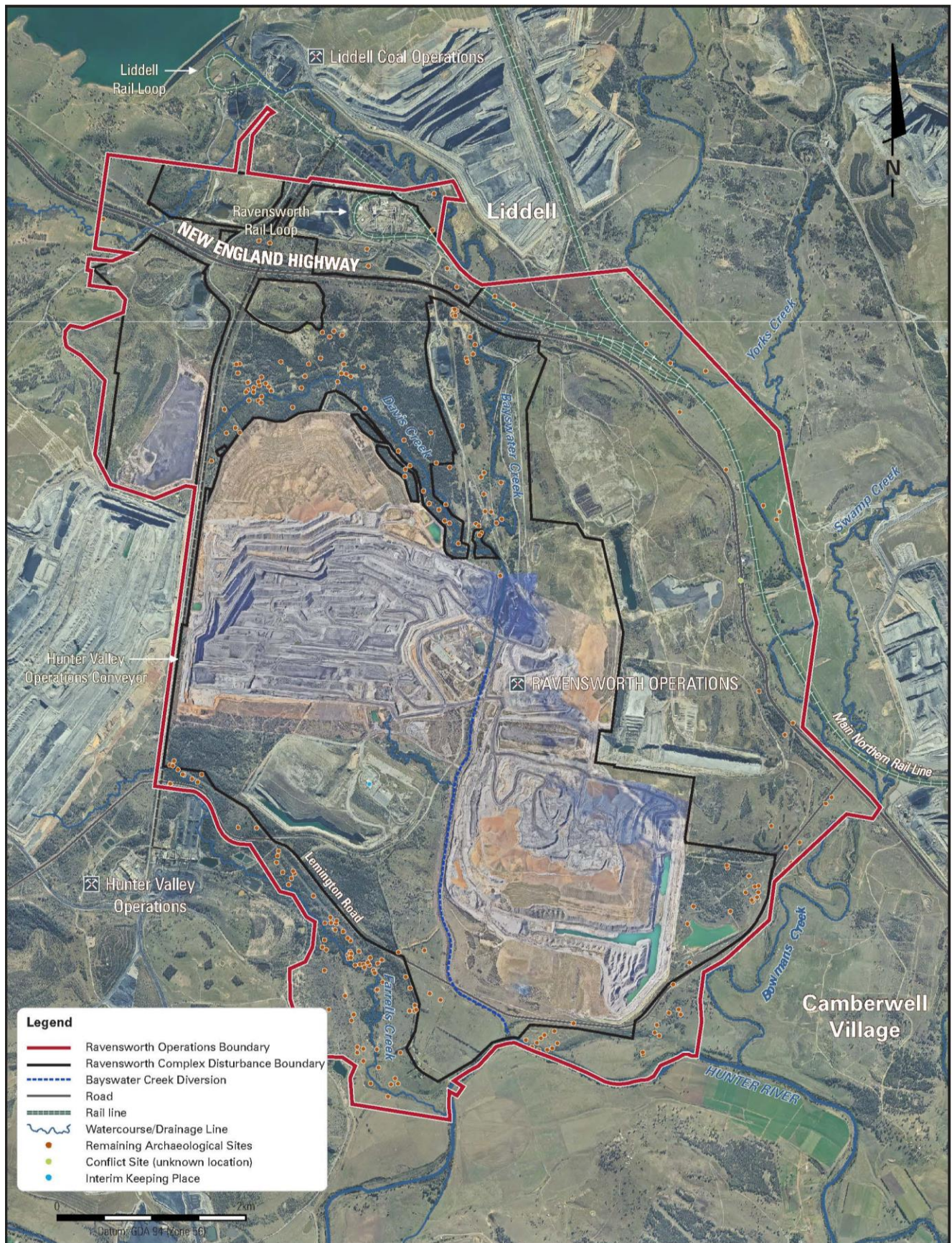
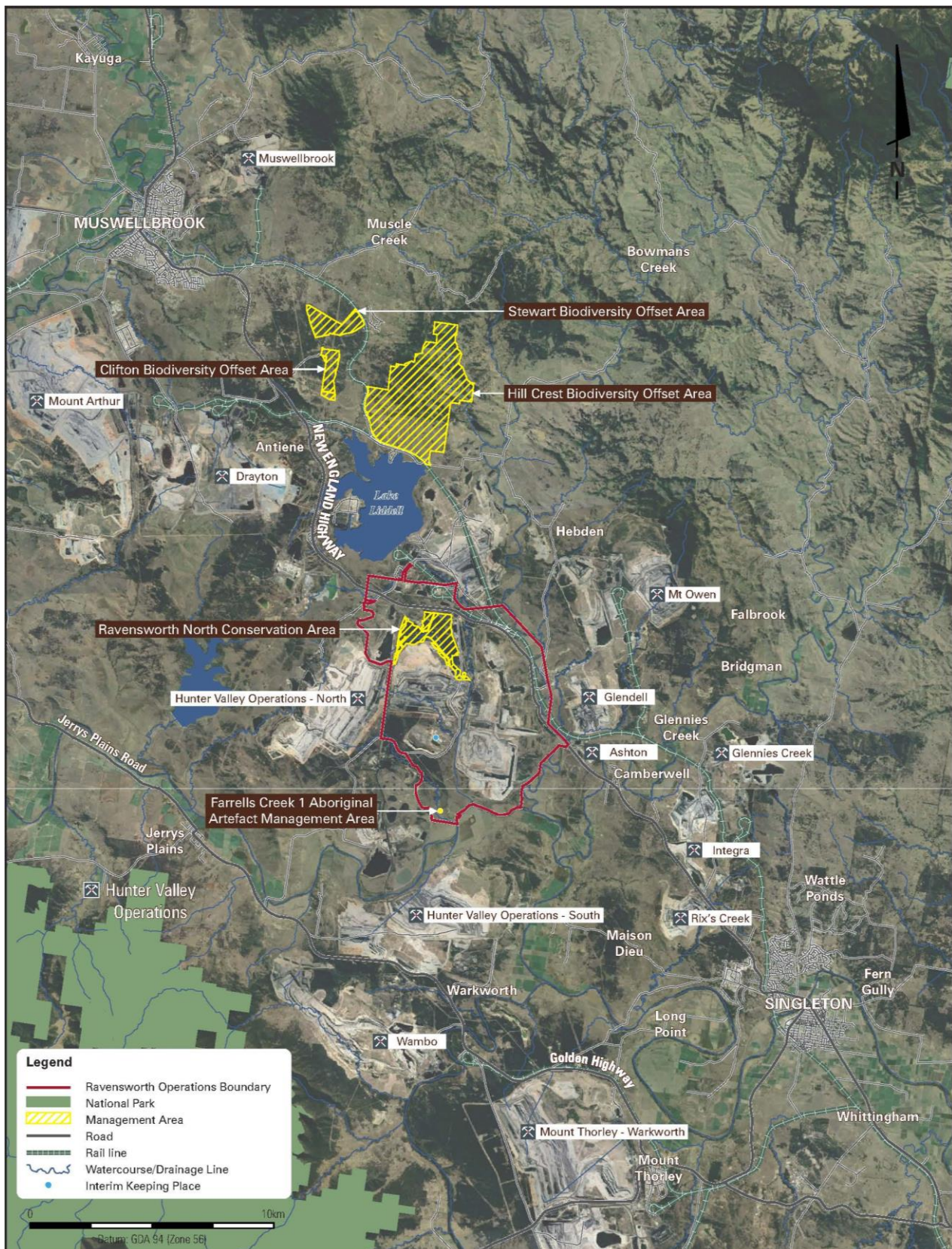
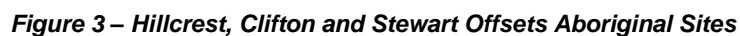


Figure 1 – Project and approved disturbance areas











## 1.5 Previous Aboriginal Site Salvage

There have been two phases of salvage works to date associated with the PA:

- Stage 1 Aboriginal cultural heritage works undertaken by Umwelt (Australia) Pty Ltd (Umwelt) and the Aboriginal community during 2011 and 2012; and
- the second stage of the PA salvage undertaken by OzArk Environmental & Heritage Management Pty Ltd (OzArk) and the Aboriginal community during 2014.

The stage 1 salvage works were undertaken under the terms of the 2011 version of this plan and the final stage of salvage was undertaken under the terms of the 2014 version of this plan. Results of the final stage of salvage are presented in OzArk 2015 with a summary provided below.

### 1.5.1 Stage 1 Salvage

An initial stage of Aboriginal site salvage and site management works was completed in 2011 by Umwelt. The work is referred to here as the “Ravensworth North Project Stage 1 Aboriginal cultural heritage works”.

The work undertaken during initial salvage works included:

- identification of an additional 151 sites *within* the Project area, including 149 artefact scatter/isolated find sites and an Aboriginal scarred tree – which, when added to those recorded previously makes a total of 564 sites;
- permanent or temporary fencing of sites to ensure their interim or long-term conservation;
- surface collection of stone artefacts from 251 sites (18 of which were partial collection only where only part of the site was to be impacted). A total of 7,561 artefacts were recovered during surface collection;
- subsurface archaeological testing/salvage undertaken at 11 sites/locations with 29,173 artefacts recovered;
- geomorphic testing conducted at seven locations with 1,263 artefacts recovered in total from six of the locations; and
- salvage excavations by RAPs only (referred to as cultural salvage in the 2011 version of the plan) conducted at 26 locations with a total of 25,186 artefacts being recovered.

### 1.5.2 Second Stage of Salvage

The 2011 version of the ACHMP proposed a staging of salvage over the life of the Project. This plan described salvage every five years for the next 25 years. On review of salvage actions, it was considered that such delay will inevitably lead to a piecemeal and potentially incoherent description of recovered Aboriginal heritage items. It follows that the delay of salvage completion for 25 years would be a significant hindrance to effective interpretation of past Aboriginal life within the area.

The 2014 version of this plan provided for a single final stage of salvage that would provide coherence in sampling, analysis and reporting, as well as certainty for development which, following salvage, can proceed in an efficient manner.

The final phase of salvage undertaken according to the 2014 ACHMP was conducted by OzArk during 2014.

The work undertaken during final salvage works included:

- recording of five new sites (RAV Nth OS-1 to OS-4 and RAV Nth IF-1) which were also salvaged by a collection of surface artefacts under the terms of the ACHMP;
- collection of surface artefacts occurred at 83 sites; and
- sub-surface manual excavation was undertaken at three sites (RW41, REA236 and REA424), including mechanical excavation (grader scrapes) at RW41.

## 2 Scope

### 2.1 Management of Aboriginal heritage values

The primary purpose of the plan is to define management of Aboriginal heritage values within the Project area and the Project Offset Areas in accordance with the PA (Table 1).

The Aboriginal heritage values were identified in the 2010 EA for the Project (Umwelt 2010). The Aboriginal heritage values of the Offset Areas were described within Ozark (2018) and Tocomwall (2017).

The plan relates to Aboriginal sites and previously defined Aboriginal heritage management areas.

### 2.2 Aboriginal sites

An *Aboriginal site* is defined in the EA as the location of Aboriginal objects<sup>1</sup>. In practice, “Aboriginal site” has been used in the EA and subsequent salvage work to refer to the extent of Aboriginal objects *visible* on the surface of the ground, potential subsurface deposits or isolated incidences such as modified trees and isolated artefacts.

### 2.3 Aboriginal heritage management areas

*Aboriginal heritage management areas* include those areas of land within the Project area previously demarcated for management of Aboriginal objects occurring within them. They include Ravensworth North Offset Area and Farrells Creek 1 Aboriginal Artefact Management Area (see Figure 2).

### 2.4 Identification and management of Aboriginal heritage values in Biodiversity Offset Areas

A secondary purpose of this plan is the identification and management of Aboriginal heritage values of Offset Areas outside the Project area. These include the Hillcrest Offset Area, Clifton Offset Area and Stewart Offset Area approved under the PA. The Offset Areas are secured under a Conservation Agreement with OEH, which was executed in 2019. The procedures for management of Aboriginal sites identified within these Offset Areas is described below in Section 4.8.

### 2.5 Project Approval conditions

The Project was approved in 2011 (the PA dated 11 February 2011) and subsequently modified in August 2013, December 2014 and February 2016 under Part 3A of the *Environmental Planning and Assessment Act 1979* (EP&A Act). The conditions of the PA, as they pertain to Aboriginal cultural heritage, are listed in Table 1.

The relevant section of the ACHMP which addresses each condition is also listed. The project commitment for a “Heritage Management Plan” covering both historic heritage and Aboriginal heritage was addressed by the completion in the 2011 version of this plan as well as the completion of a separate historical heritage management plan (Umwelt 2011b).

---

<sup>1</sup> The terminology derives from the National Parks and Wildlife Act 1974 (NPW Act). “Aboriginal object” is defined in section 5 of the NPW Act as:

*any deposit, object or material evidence (not being a handicraft made for sale) relating to the Aboriginal habitation of the area that comprises New South Wales, being habitation before or concurrent with (or both) the occupation of that area by persons of non-Aboriginal extraction, and includes Aboriginal remains.*



**Table 1. Ravensworth Open Cut Project Approval conditions**

Ref	Condition	ACHMP section
42	The Proponent shall prepare and implement a Heritage Management Plan for the project to the satisfaction of the Director-General. This plan must:	All
(a)	be prepared in consultation with OEH, the Aboriginal community, the Heritage Council, Council, local historical organisations and relevant landowners, and be submitted to the Director-General for approval by the end of June 2011;	Met by the 2011 ACHMP version
(b)	include the following for the management of Aboriginal heritage on site:	
	<ul style="list-style-type: none"> <li>a plan/s of management for the Ravensworth North Offset Area, Hillcrest Offset Area, Clifton Offset Area, Stewart Offset Area and Farrells Creek 1 Aboriginal Artefact Management Area.</li> </ul>	4
	a program/procedures for:	
	<ul style="list-style-type: none"> <li>salvage, excavation and/or management of Aboriginal sites and potential archaeological deposits within the project disturbance area;</li> </ul>	4, 7 to 9
	<ul style="list-style-type: none"> <li>protection and monitoring of Aboriginal sites outside the project disturbance area;</li> </ul>	4.8
	<ul style="list-style-type: none"> <li>monitoring, notifying and managing the effects of blasting on potentially affected Aboriginal sites;</li> </ul>	4.5
	<ul style="list-style-type: none"> <li>managing the incremental ground vibration limits under condition 10A<sup>2</sup>;</li> </ul>	4.5
	<ul style="list-style-type: none"> <li>maintaining and managing access to Aboriginal sites by the Aboriginal community;</li> </ul>	5.4.3
	<ul style="list-style-type: none"> <li>contributing to Aboriginal cultural heritage management (in accordance with the commitments in the EA);</li> </ul>	5.4.4
	<ul style="list-style-type: none"> <li>managing the discovery of any new Aboriginal objects or skeletal remains during the project; and</li> </ul>	8.1, 8.2
	<ul style="list-style-type: none"> <li>ongoing consultation and involvement of the Aboriginal communities in the conservation and management of Aboriginal cultural heritage on the site</li> </ul>	5

<sup>2</sup> 10A. The Proponent shall ensure that blasts on site do not cause any exceedance of the following incremental ground vibration limits at the Aboriginal axe grinding groove site (REA86):

(a) 60 mm/s;

(b) 120 mm/s; and

(c) 175 mm/s;

without the prior approval of the Director-General.

In seeking the Director-General's approval for an incremental increase in the ground vibration limit from (a) to (b) to (c) above, the Proponent shall provide a report prepared by a suitably qualified expert, in consultation with OEH and relevant Aboriginal groups, demonstrating that blasting at these limits is not having any discernible impact on the Aboriginal axe grinding groove site (REA86).

## 2.6 Review cycle for this plan

This plan will guide Aboriginal cultural heritage management actions for the proposed 29 year life of the Project during which time it will be reviewed either when required under the conditions set out in section 2.61 or at any time when the Ravensworth Complex considers the ACHMP could be improved to better meet Project management responsibilities.

### 2.6.1 Making changes to this Plan

The Ravensworth Complex Environment and Community Manager is responsible for the plan, which will be stored in the Ravensworth Complex *Sharepoint* digital document control system.

Amendments will be made according to the Ravensworth Complex document control procedure. All historical versions will also be available electronically within the *Sharepoint* digital document control system. Printed versions will not be considered controlled documents as they may not show recent amendments.

Changes may be made to the plan in the following circumstances:

- where new Aboriginal sites are discovered which require specific management approaches proportionate to their cultural significance and which are not otherwise covered in this plan;
- where approved modifications to the Project introduce new impacts on Aboriginal heritage which are not generally covered by this plan; and
- where approved changes to the Project change or remove previously planned impacts on Aboriginal heritage where mitigation was proposed in the plan but is no longer required.

Where changes are made to the plan, a draft of the modified plan will be subject to Aboriginal consultation in accordance with the plan. Matters raised in consultation which are specific to the changes in the plan may be acknowledged and addressed in the modified plan.

Copies of Department of Planning, Industry and Environment (DPIE) (formerly Department of Planning and Environment) approval letters are attached to this plan (**Appendix D**).

## 3 Aboriginal Cultural Heritage Values

### 3.1 Socio-cultural values

#### 3.1.1 Value of Aboriginal sites

The Project area is located within the traditional country of the Wonnarua<sup>3</sup> people. The physical evidence of Aboriginal life throughout this country is pervasive. Cycles of life, interaction, ceremony and death are all represented in a range of sites throughout the Central Lowlands and Southern Mountains and beyond.

A prevailing view throughout the Aboriginal consultation for the EA and during development of the ACHMP was the importance of all physical evidence of Aboriginal life to current Aboriginal communities. Aboriginal sites provide a tangible connection to pre-European Aboriginal land use. Aboriginal sites are valuable in sustaining contemporary Aboriginal identity through opportunities for teaching and engagement with heritage in field investigations.

#### 3.1.2 Conflict history

The Project area has also been potentially connected to a massacre of Aboriginal people: an especially tragic aspect of Aboriginal history in the early nineteenth century which is discussed in more detail in the 2014 ACHMP version. While the historical evidence shows that the massacre referred to in the site card for 37-3-0390 did not occur at the modern village of Ravensthorpe, the association of the local area with early conflict is felt strongly by the local Aboriginal community and is worth noting in this plan. The site card for 37-3-0390 refers notes that:

*"Approximately 18 Aborigines were murdered in the massacre somewhere near Ravensthorpe in 1827. The killings were committed by 'a posse of soldiers and civilian volunteers' in reprisal for the murders of two white men in August 1827 (Milliss 1992: 58)."*

Whilst the precise location is unknown, an indicative location for this site as referred to on the site card for 37-3-0390 is shown on Figure 1. No specific management or mitigation measures are required due to the site being located outside of the Project disturbance area. However, any future activities with the potential to impact on site 37-3-0390 will be assessed by a suitably qualified archaeologist, with any management measures to be implemented in consultation with the RAPs.

#### 3.1.3 Cultural values assessment

To gain an understanding of the importance or the cultural significance of the Ravensthorpe Project area to Aboriginal people, Aboriginal stakeholders were invited to participate in a cultural values assessment process, building on the consultation process for the EA which commenced in 2008. This included opportunity for independent statements to be provided in writing and verbally during project meetings, but also the opportunity to develop statements of cultural value during a facilitated workshop held over four days in March 2011. The extensive consultation was documented in detail in Volume 4 of the 2011 version of this plan (Umwelt 2011a) which is available for reference via the Ravensthorpe Complex *Sharepoint* document control system. Cultural values expressed by Aboriginal stakeholder statements and detailed in the EA and the previous 2011 and 2014 ACHMP versions are summarised here.

During Aboriginal stakeholder consultation meetings, comments on the cultural significance of the Ravensthorpe area have been provided, which identify that the local area contains many significant places, including women's places, men's places, bora grounds, the reported engraving site on Bowman's Creek and places to source ochre nearby. Bowman's Creek was identified to be of particular significance, with an identified association with a song line and its connectivity to other culturally significant areas within the valley lowlands, with the potential for scarred trees to add to the Wonnarua people's story. Bowman's Creek was also identified as an important fishing place, with fish traps in the creek that were formerly there for hundreds of years.

<sup>3</sup> The spelling follows Tindale 1974 and Horton 1994 but alternate spellings are acknowledged including but not limited to: Wonnarua, Wonnaruah, Wonnaruwa, Wonnaruah, Wonnarawa



Common concerns were for protection of Aboriginal sites and care of land. Views on the socio-cultural significance ranged from all Aboriginal sites being of the highest order of significance to a view held by many that particular attention should be given to the rare site types such as scarred trees, grinding grooves and burials if present (a common view is that there may be potential for burials associated with Bowman's and Emu creeks). Land and ecology were deemed of high socio-cultural significance as summed up by the following cultural values statement.

*All of country. All the area is connected through song lines/trade routes. Continuing cultural and spiritual connection. Culture and spirituality is enduring and growing.*

## 3.2 Aboriginal sites

In a search of the Aboriginal Heritage Information Management System (AHIMS) in May 2016, a total of 747 Aboriginal sites have been identified within the Project area. In addition to this, two sites (RNOA IF1 and RNOA IF2) were identified within the Ravensworth North Offset Area during the 2018 Annual site monitoring program (**Appendix C**).

Of the 749 sites, 414 are listed on AHIMS as having been salvaged under permit, one has been deleted, two are listed as 'not a site' and 39 are listed as partially destroyed under permit. 293 sites are listed as valid on the AHIMS<sup>4</sup>.

Of the 574 Aboriginal sites within the Project area listed on the Ravensworth Complex geographic information system (GIS), the following site types are recorded:

- 404 artefact scatters;
- 163 isolated finds;
- 1 engraving site;
- 1 site complex;
- 1 conflict site;
- 2 scarred trees; and
- 'not a site'.

The one site complex (REA86) includes grinding grooves and stone artefacts. Scarred tree REA418 has been moved from its original position and stored in a protective structure close to the REA86 grinding groove site in the Ravensworth North Offset Area.

## 3.3 Management areas within the Project area

Several defined areas occur within the Project area where specific management measures have been implemented for the protection of Aboriginal sites. The two areas identified in the PA as requiring management within the Project area include:

- Ravensworth North Offset Area; and
- Farrells Creek 1 Aboriginal Artefact Management Area.

These management areas are for the in situ preservation of heritage sites. These management areas are described in this section below and their locations are shown in Figure 2. The common management measures for these areas, including ongoing Aboriginal community access, are described in Section 4.

Offset areas outside the Project area are treated separately in Section 4.8 and are also shown in Figure 2.

In addition to management areas, an Interim Keeping Place has been established for the storage and curation of salvaged heritage items. The function and operation of the Interim Keeping Place is described in Section 7.7 and its location is shown in Figure 2.

<sup>4</sup> In such a relatively large area that has been subject to archaeological investigations over a number of years, there is considerable opportunity for discrepancies to be found within the AHIMS data. Ozark (2017) completed a gap analysis between the AHIMS records and the records held by the Project to ensure that the AHIMS record is corrected to be as accurate as is possible. This analysis was updated in 2019 and the Project GIS data retained on site are being updated for consistency with AHIMS records.

### 3.3.1 Ravensworth North Conservation Area

Ravensworth North Conservation Area comprises 283 hectares of land within the Davis Creek catchment located within the north-western quarter of the Project area. The Conservation Area was established through the Project's EA and PA on the basis of the high Aboriginal cultural heritage and ecological values of the area. The Conservation Area includes the very significant REA86 site complex which comprises grinding grooves and an artefact scatter on Davis Creek. The Conservation Area also includes 29 artefact scatters, 12 isolated finds and the relocated scarred tree REA418. Aboriginal sites occurring within the Conservation Area are shown in Figure 1 and listed in **Appendix A**.

### 3.3.2 Farrells Creek 1 Aboriginal Artefact Management Area

Farrells Creek 1 Aboriginal Artefact Management Area comprises 4.5 hectares of land located near the southern margin of the Project area approximately 1.4 km upstream from the junction of Farrells Creek with the Hunter River (see Figure 2). The area was established in 2007 as part of the former Ravensworth West mine planning approval to protect the Farrells Creek 1 archaeological site and as a suitable place to keep the Aboriginal artefacts salvaged from the Ravensworth West mine disturbance area.

## 3.4 Management areas outside Project area

Three Offset Areas approved in the PA are located outside the Project area, however these relate to the Project to which the PA applies (being listed in Appendix 1, Schedule of Land in the PA). The three areas are the Hillcrest Offset Area, Clifton Offset Area and Stewart Offset Area (see Figure 2).

The Hillcrest property is 1,403 hectares in area and is located approximately six kilometres to the north of the Project area, on land currently owned by Glencore. The Hillcrest Offset Area has been secured primarily for biodiversity conservation purposes.

The Clifton and Stewart Offset Areas are located approximately three kilometres northwest of the Hillcrest property and collectively secure 272 hectares of land primarily for biodiversity conservation purposes.

The common management measures for these areas, including ongoing Aboriginal community access (by arrangement), are described in Section 4.8 and Section 5.4.3.

The location of Aboriginal sites identified within the Hillcrest, Clifton and Stewart Offset Areas are shown in Figure 3.

## 4 Management Strategy

### 4.1 Aboriginal heritage impacts

Project impacts will occur to Aboriginal objects both at Aboriginal sites where objects are visible, as well as below the ground surface where they are not readily apparent. The EA described impacts to Aboriginal sites through the development of the proposed open cut mine and associated mine infrastructure. However, not all parts of the Project area will be affected and therefore many Aboriginal sites will not be impacted. The status of Aboriginal sites is listed in **Appendix A** to **Appendix C**.

Aboriginal site investigations undertaken subsequent to the EA confirm that Aboriginal stone artefacts additional to those originally recorded may continue to be found in low numbers across the landscape as exposure conditions change. These findings confirm that Aboriginal stone artefacts are broadly distributed within the soil across the Project area and that vegetation cover and soil exposure conditions can change to reveal previously obscured artefacts. Such exposed artefacts are referred to as “sites” which means the site where Aboriginal objects may be observed in the present. Similarly changing environmental conditions can obscure previously visible Aboriginal objects. The phenomenon of previously recorded “sites” not being discoverable at a later time is also common.

The management strategy addresses the recorded sites of Aboriginal objects as well as the inferred broad distributions of Aboriginal stone artefacts reflecting past Aboriginal activity in all parts of the landscape. Because Aboriginal objects occur within the topsoil in parts of the Project area, impacts to undiscovered Aboriginal objects may occur. The management strategy is provided as mitigation of all Aboriginal heritage impacts, including impacts to those Aboriginal objects that have been recorded and Aboriginal objects which may occur unrecorded within the topsoil.

### 4.2 Strategy

The management strategy will be implemented with participation of the RAPs.

Aboriginal sites within the Project area but outside of the approved Disturbance Area will not be impacted. The following management strategies apply to these sites:

- previously recorded Aboriginal sites not impacted by development will be protected by fencing and signage (see section 7.2), and will be subject to monitoring (see section 4.9);
- protected Aboriginal sites (Figure 1), including partially protected sites where impacts will not extend to all of the site, within management areas will be actively managed to prevent deterioration;
- Aboriginal sites outside management areas will be managed for ongoing avoidance of impacts;
- monitoring of Aboriginal site condition will occur at representative sites and the REA86 grinding grooves.

Any sites within the approved Disturbance Area are likely to be impacted. All known sites within the approved Disturbance Area have been salvaged under the terms of the 2011 or 2014 versions of the ACHMP. However, before an area is impacted by approved mining activities, a previously unknown site may be noted. The following management strategy relates to new discoveries within the approved Disturbance Area:

- any Aboriginal sites identified within the approved Disturbance Area will be salvaged following the methodology set out in sections 7 and 8 of this plan; and
- all findings will be described in a technical report.

### 4.3 Aboriginal heritage salvage programs

A series of Aboriginal site salvage and management actions were undertaken by Umwelt and the RAPs in 2011–2012. In 2014 the final phase of salvage was conducted by OzArk and RAPs. These actions are described in Table 2.1 and 2.2, and shown in Figure 5 to Figure 8.



**Table 2 Stage one Aboriginal site salvage and management works**

Strategy	Management Action	Summary
Protection	Fencing	178 sites fenced comprising 176 stone artefact sites and two scarred tree sites.  77 of these sites were fenced as interim protection measures pending salvage and impact by Project activities.
Collection	Surface Collection	251 sites were subject to surface collection exclusively. Several other sites subject to excavation were also surface collected. Of the 251 subject exclusively to surface collection, no artefacts could be found for collection at 28 sites.
Excavation	Salvage excavation	11 sites were subject to salvage excavation.
	Geomorphological excavation	Six sites and one other location were subject to geomorphic testing.
	Excavation by RAPs	26 locations were subject to salvage excavation by RAPs.

**Table 2.1 Final Aboriginal site salvage and management works**

Strategy	Management Action	Summary
Collection	Surface Collection	80 sites were subject to surface collection exclusively. Three other sites that were subject to excavation were also surface collected. 683 artefacts were recovered from the surface artefact collection across the 83 sites salvaged. Artefact densities ranged from zero artefacts per site up to 117 artefacts per site with the majority (68 sites or 82 per cent) recording 10 or less artefacts per site.
Excavation	Salvage excavation	Three sites were subject to salvage excavation.  At site RW41, 318 artefacts were recovered from manual excavation and a further 192 artefacts recovered from mechanical excavation (grader scrapes).  At site REA236, 706 artefacts were recorded. However, 665 of these artefacts (94 per cent) were recovered from a single excavation area surrounding Tr1 Sq2.  17 artefacts were recovered at site REA424 from three transects.

## 4.4 Protection measures for stone artefact sites

Many Aboriginal sites not scheduled for development impact within the current Project area were fenced as part of the stage one Aboriginal site management works.

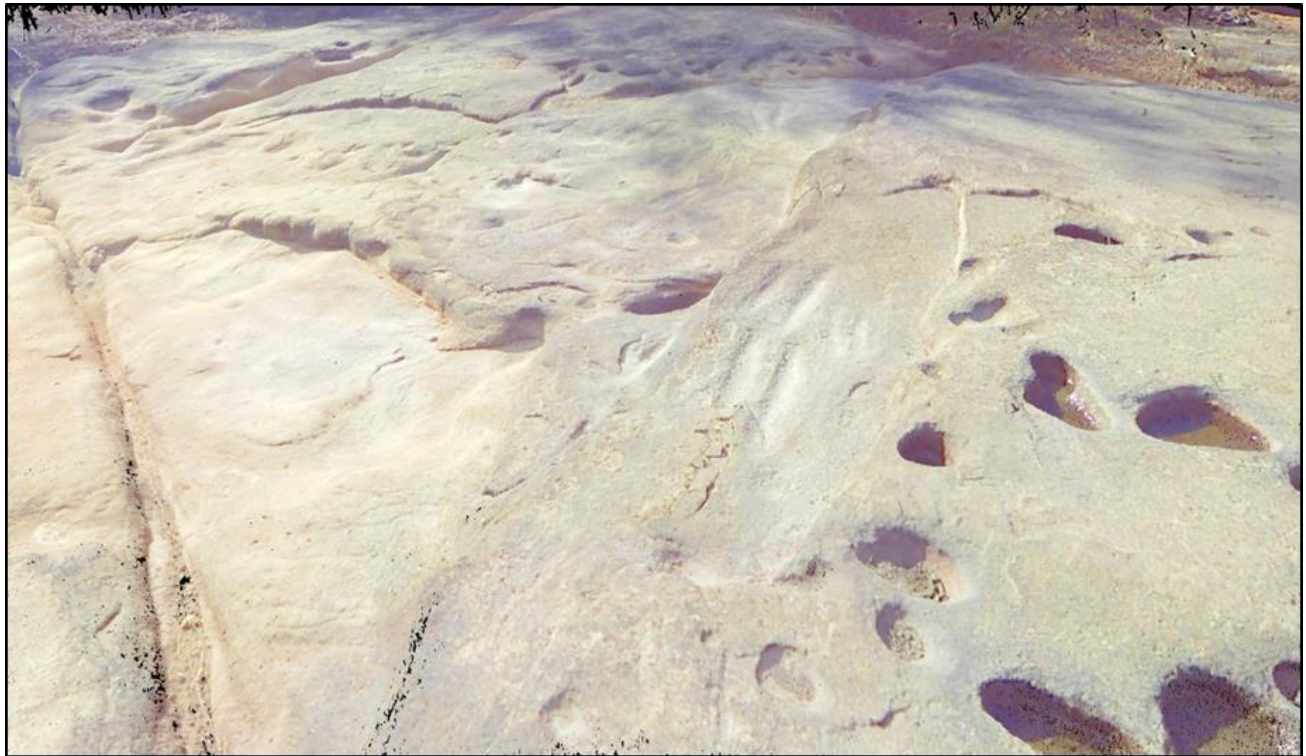
Any newly identified Aboriginal sites identified in the Project area will be fenced, if required, as quickly as possible. Signage on the fencing is to state that the area is subject to environmental protection, that no ground disturbance is allowed and includes relevant contact details for Ravensworth Complex staff.

Management areas are to be fenced with controlled access and appropriate signage. The minor impact to the ground surface during installation of fence posts is permissible on condition that no soil is removed off site.

Land management actions are permissible within Aboriginal site boundaries and within management areas as long as ground impact is avoided where possible and minimised where unavoidable. Ground impacts should be limited to the addition of materials for land management purposes, e.g. sediment control fences, erosion and sediment control materials over ground or addition of topsoil and planting materials. Stock shall be kept out of fenced sites and areas.

## 4.5 Protection measures for REA86 Grinding Groove site

Site REA86 (37-3-0982) comprises a series of Aboriginal hatchet head (axe) grinding grooves on sandstone outcrops within Davis Creek and approximately 700 stone artefacts in close proximity to the grooves (Figure 4). The site is reported as being approximately three hectares in size and located at the south-eastern end of the Ravensworth North Conservation Area. The scarred tree REA418 was salvaged from its original location and moved to the site in a protective structure.



**Figure 4 –Digital Scan Image of Site 37-3-0982 REA86 Grinding Grooves)**

Open cut mining has occurred approximately 250 m to the south of the site and mining is now moving away from the area in a southerly direction. The impact of blasting induced vibrations on the REA86 grinding grooves was considered as part of the EA and subsequently by Terrock (2012). Terrock reported that peak vibration levels in the order of 280 mm/s are required to damage the weakest category of sandstone listed, based on available data for the strength characteristics of sandstone from AusIMM *Field Geologists' Manual*. Terrock also found that for average strength sandstone, vibration levels in the order of 866 mm/s are required to cause potential damage.

In order to provide a conservative safety buffer, a limit of 175 mm/s was considered acceptable. This limit was agreed with RAPs during consultation with Ravensworth Operations in December 2012. However incremental increase of vibration was to be managed in accordance with condition 10A of the PA (Mod1).

Condition 10A of the PA (Mod1) states

*"10A. The Proponent shall ensure that blasts on site do not cause any exceedance of the following incremental ground vibration limits at the Aboriginal axe grinding groove site (REA86):*

*(a) 60 mm/s;*

*(b) 120 mm/s; and*

*(c) 175 mm/s;*

*without the prior approval of the Director-General.*

*In seeking the Director-General's approval for an incremental increase in the ground vibration limit from (a) to (b) to (c) above, the Proponent shall provide a report prepared by a suitably qualified expert, in consultation with OEH and relevant Aboriginal groups, demonstrating that*

*blasting at these limits is not having any discernible impact on the Aboriginal axe grinding groove site (REA86)."*

Whilst mining in proximity to the REA86 grinding grooves, the maximum level of vibration reached at REA86 was 33 mm/s, in 2013.

A comprehensive photographic recording of the REA86 grooves has been undertaken prior to initial blasting and a digital copy with map of photo locations and description of method stored in association with this plan. The recording serves as an initial condition baseline from which to assess the effect of blasting.

Annual monitoring and photographic recording was undertaken in a comparable manner to the baseline recording to assess vibration effects on the grooves from 2012 to 2016. The process for undertaking these photographic records involved manual silt removal from the REA86 grinding grooves. Annual monitoring surveys were completed over the period from 7/8/2012 to 8/12/2016. These surveys indicated there was no significant change to the site during this time frame, and recommended suspension of any further surveys as the continual cleaning of the surface was exposing the structure to more wear and tear than it would ordinarily suffer through the natural washing of the surface by rainfall.

Due to the findings of the 2012 – 2016 surveys and the progression of mining away from the REA86 grinding grooves site, photographic recording is now undertaken on a three-yearly basis. Inspections of the site will be undertaken on an annual basis during the monitoring program described in Section 7.6.

If new works are proposed within the vicinity of the REA86 grinding grooves site, which are considered to have a potential impact on the groove surface, then the comparable photographic monitoring will recommence on an annual basis. Vibration monitoring will continue as above in accordance with Condition 10A of the PA, unless otherwise agreed with DPIE.

## 4.6 Scarred tree management

Two scarred trees, REA418 and REA213, have been found to be of definite Aboriginal origin by consensus of expert opinion and Aboriginal party consultation. Scarred tree REA 418 has been removed from its original locations and installed within a protective structure within the REA86 site complex. Scarred tree REA213 which is located near the Hunter River has been fenced off and is managed in situ.

Two scarred trees, REA40 and REA86<sup>5</sup>, referred to as Aboriginal sites in earlier reports, have been found to "not likely" be of Aboriginal cultural origin on the basis of expert opinion (Long 2012) and Aboriginal consultation. These two trees, both located within the Ravensworth North Offset Area, have no further management protocols attached to them.

## 4.7 Salvage measures

All salvage activities relate to Aboriginal cultural sites. All planned salvage activities within the approved Disturbance Area have been completed under the terms of the 2011 and 2014 ACHMPs. The report of the 2014 salvage program is contained in OzArk 2015.

Should new Aboriginal sites be recorded within the approved Disturbance Area or in Project Offset Areas where remedial biodiversity management works are required under the PA, then these sites will be salvaged according to the methodology set out in Section 9 of this plan.

### 4.7.1 Analysis of artefacts from the stage 1 salvage program

Umwelt produced an interim report detailing the work carried out during the stage 1 salvage program in 2011–2012 (Umwelt 2013). However, this report did not include a detailed analysis of the artefacts recovered from the surface collection or the manual excavations. The artefacts remain curated in a

---

<sup>5</sup> REA86 is a site which contains grinding grooves and stone artefacts. A scarred tree was also identified in association with these Aboriginal objects occurring at site REA86, however the scar was deemed not to be of Aboriginal origin in expert reports and by agreement with Aboriginal stakeholders. The dead tree fell in 2014 but is still within the site boundary.



located container at the Ravensworth Complex. The artefacts are bagged, labelled and identified on the archive boxes that contain artefacts from a particular area.

In the 2014 ACHMP (section 3.2) the following undertaking was made concerning these artefacts:

- all recovered material will be catalogued with analysis contributions from RAPs through an agreed training program;
- detailed archaeological analysis will be conducted on samples of excavated assemblages that have greater capacity to answer timely and specific research questions; and
- all findings will be described in a technical report and summarised in a non-technical report for the Aboriginal community.

This analysis of the assemblage characteristics and scientific information potential of the lithic artefacts collected for the Project has subsequently been completed. The findings of this assessment are detailed in AECOM (2018).

## 4.8 Management areas outside the Project area

The Aboriginal cultural heritage management strategy for the Offset Areas approved in the PA and located outside of the Project area is described in this section.

Aboriginal heritage and cultural values assessments have been conducted within the Hillcrest Offset Area, consistent with relevant current government guidelines. These assessments (documented in Ozark, 2015, 2018 and Tocomwall, 2017) identified the presence of a number of Aboriginal heritage sites. Aboriginal heritage values identified in the assessment will be managed for their protection. The Aboriginal heritage protection procedures in the plan apply to recorded Aboriginal sites within the Offset Areas outside the Project area. These protection procedures (as described in Section 7) are consistent with the relevant legislation and will be undertaken generally in accordance with the management requirements for Aboriginal Places and Aboriginal Objects as required under the 2019 Conservation Agreement for the Project Offset Areas. The 2019 Conservation Agreement requires that:

*“The Owner must preserve and protect Aboriginal Places and Aboriginal Objects and other sites of cultural heritage significance on or in the Conservation Area and in accordance with the relevant legislation.”*

Access to recorded Aboriginal sites within the management areas for Aboriginal community members will be provided in accordance with normal Ravensworth Complex safety and security protocols.

Where construction of essential public or land management infrastructure (including remediation of erosion and other degraded land on Project Offset Areas required under the terms of 2019 Conservation Agreement) is required, impacts to Aboriginal heritage sites must be assessed and, if appropriate, subject to a separate impact approval processes under applicable NSW legislation<sup>6</sup>.

Aboriginal sites within the management areas are to be fenced in accordance with the procedure described in Section 7. The land is to be managed in accordance with the procedure described in Section 7.

### 4.8.1 Management of Aboriginal Sites within Offset Areas

A key objective of establishing the Project Offset Areas has been to compensate the residual biodiversity impacts of the Project and to maintain and improve the biodiversity values within the region throughout the life of the mine. In accordance with Schedule 3 Condition 38 of PA, Ravensworth Operations has prepared the approved Biodiversity Management Plan which describes management actions required to improve the biodiversity values within its Offset Areas. This generally entails the progressive removal of cattle grazing activities, management of weeds and feral animals and a number of physical activities, including stabilisation, revegetation and rehabilitation of the offset land to improve habitat diversity and connectivity. The approved Biodiversity Management Plan also describes works in areas categorised on Figure 5.25 of Appendix 7 of the PA as ‘Remediation Work (inc. assisted rehabilitation)’.

<sup>6</sup> Applicable legislation at the time of preparing this plan is the National Parks and Wildlife Act 1974. Aboriginal heritage legislation is undergoing reform and a new Aboriginal Cultural Heritage Act is anticipated in the near future.

Ravensworth Operations has previously trialled a number of non-invasive management options within the Offset Areas in an endeavour to avoid impacts to Aboriginal sites (see Section 3.4). These management options were generally limited to works that did not impact the ground surface, such as staked hay bales and sediment fences (OzArk, 2015b).

To date, these techniques have not been able to achieve the required biodiversity outcomes proposed for the Offset Areas. Revegetation and other remediation works for degraded sections of Project Offset Areas are proposed to meet the biodiversity improvement outcomes required under the PA and the approved Biodiversity Management Plan. These works which are proposed to provide the best chance of success for the proposed revegetation strategy may require the disturbance to known Aboriginal sites.

The plans for these works in areas with known Aboriginal sites will be communicated with OEH and the Registered Aboriginal Parties (RAPs) (see Section 5.4.4), including the anticipated impacts and management methods. If required, the salvage and ongoing management of Aboriginal sites will be undertaken as described within Section 9 of this plan. Other management options may include reburial or relocation of artefacts, or other strategic revegetation methods to protect an exposed site. With the activities approved under the PA being classified as a 'major project' under the former Part 3A of the EP&A Act, the proposed remediation works required for the Hillcrest Offset Area will be undertaken in accordance with the procedures described within this ACHMP as a result of the effect of clause 4.41(1d) (formerly section 75U) of the EP&A Act.

Procedures for the protection of recorded Aboriginal sites described in Section 7 will continue to be implemented for any sites not subject to the above works. The process outlined in Section 8.2 will be followed for any new Aboriginal sites identified within the Offset Areas.

## 4.9 Monitoring of Aboriginal sites in protected areas

Photographic monitoring of a representative sample of up to 10 protected Aboriginal sites with more than 10 artefacts within management areas in the Project area will be undertaken in accordance with the photographic monitoring procedure described in section 7.6. Monitoring photographs will be taken at a three year interval and will include monitoring of the REA86 grinding grooves site. Where deterioration of site condition is evident, the photo will be digitally annotated and action will be taken to address the cause of the deterioration. If planned actions involve significant remediation works being carried out, notification will be made to DPIE and the Office of Environment and Heritage (OEH). The actions will be recorded on the annotated photo(s) for future reference.

## 4.10 Management areas within the Project area

Aboriginal sites within management areas (ref section 2.3) may be fenced. Aboriginal sites within areas specifically set aside as Aboriginal heritage management areas may not be fenced if the fencing detracts from the appreciation of the site. The land is to be managed in accordance with the procedure described in Section 7. Fencing may be omitted or removed if it brings undesired attention to the site from vandals or otherwise increases risk of impact to the site's heritage values. If fencing is omitted or removed, other management options to protect the site will be considered on a case by case basis in consultation with Ravensworth RAPs. Other management options may include reburial or relocation of artefacts, salvage and storage of artefacts in accordance with this plan, or strategic revegetation to protect an exposed site.



## COMPLETED STAGE ONE SALVAGE

Ravensworth Open Cut Aboriginal Cultural Heritage Management Plan

FIGURE 5

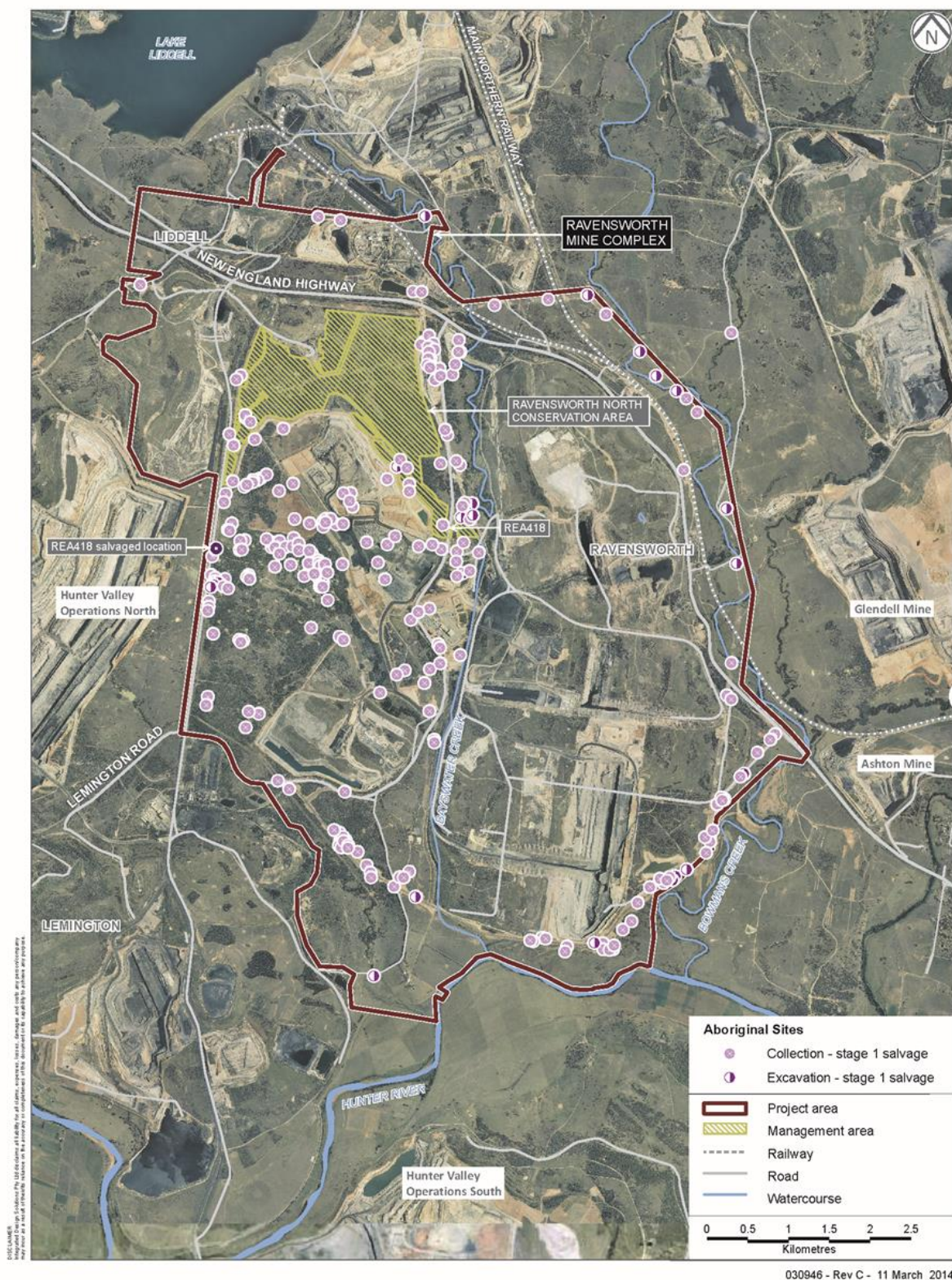


Figure 5 – 2014 salvaged sites (north)





Figure 6 – 2014 salvaged sites (centre)



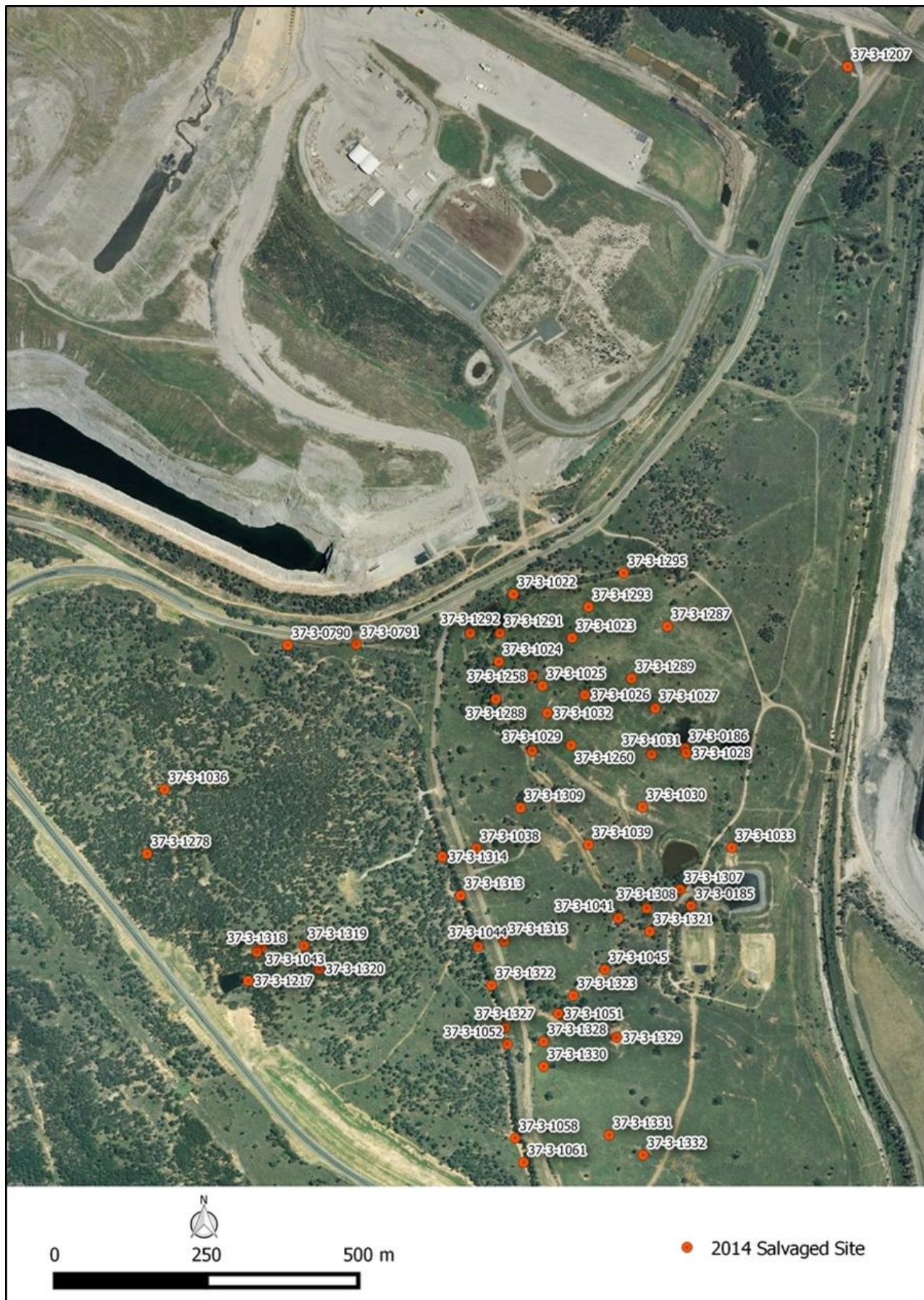
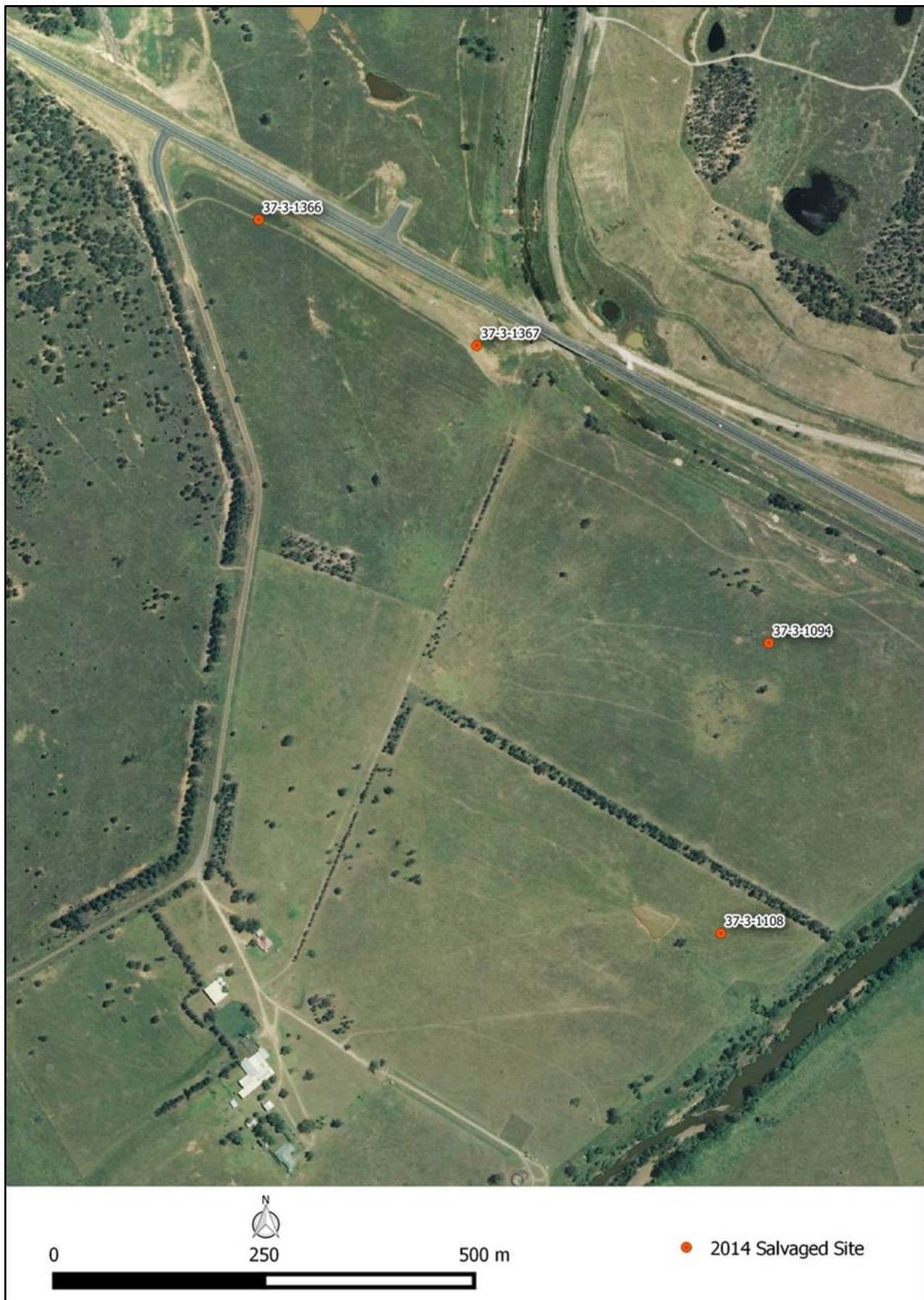


Figure 7 – 2014 salvaged sites (south)





*Figure 8 – 2014 salvaged sites (south)*

## 5 Aboriginal Community Consultation

### 5.1 RAPs consulted

Details of Aboriginal community consultation undertaken for the 2011, 2014 and 2018 ACHMPs can be found in the respective documents.

A draft of this version of the ACHMP was provided to all Ravensthorpe RAPs for review and comment in August 2019. No comments were received during the review period.

### 5.2 Consultation process for the EA

The EA consultation process is detailed in Volumes 5 and 6 of the EA.

### 5.3 Consultation in developing this plan

To see Aboriginal community consultation for this version of the ACHMP refer to **Appendix D**.

### 5.4 Ongoing consultation protocols

#### 5.4.1 All RAPs to be kept informed

RAPs will be kept informed about Project progress in relation to Aboriginal heritage management.

An annual consultation and working group meeting will be held with representatives from RAPs and may include a site visit. Key knowledge holder groups currently consist of the Wonnarua Nation Aboriginal Corporation, the Wonnarua Traditional Custodians and the Plains Clan of the Wonnarua People and the Wanaruah Local Aboriginal Land Council.

Items discussed at the meetings include:

- Monitoring and management of known sites; and
- Management within Offset Areas.

In addition to the meeting an annual update will be prepared providing a summary of relevant progress and actions. The Ravensthorpe Complex Environment and Community Manager or their delegate will be responsible for consulting RAPs.

Notification within a reasonably prompt timeframe will be issued to all RAPs where:

- significant changes to the Project may have implications for Aboriginal heritage management;
- there is a significant discovery in the course of development e.g. Aboriginal ancestral remains or archaeological features; or
- where significant land management actions are required in Aboriginal site protection areas not envisaged by this plan.

Urgent issues requiring the attention of RAPs will be communicated no later than one week of the issue arising. Feedback from RAPs should be received by Ravensthorpe Complex preferably within two weeks and no later than four weeks from the date correspondence is issued by Ravensthorpe Complex.

Issues raised by RAPs in conversations whether by telephone or in person in the course of ongoing consultation will be documented in writing by the person raising the issue. Only documented issues will be followed up by Ravensthorpe Complex.

RAPs will be consulted in the review of the Project ACHMP.

#### 5.4.2 Acknowledgement and Welcome

It is now common to attend a meeting, conference or community gathering where proceedings begin with either:



- an acknowledgement of land or original custodians by the first speaker; and/or
- a Welcome to Country which is performed by an Aboriginal Elder or leader who is from the community in which you are meeting.

Such acknowledgement is commonplace in many general community and government settings. This approach is taken from NSW government guidelines *Working with Aboriginal People and Communities* (DOCS 2009: 14).

When organising a meeting, event or conference, it is respectful and good practice to acknowledge the land in which you are meeting and its original custodians. It is advisable to prepare such an acknowledgement to deliver at the start of the planned meeting or gathering.

For example:

*I would like to acknowledge the original custodians, the Wonnarua people, on whose land we are meeting today. I would also like to pay my respects to Elders past and present, and welcome all Aboriginal people here with us today.*

A Welcome to Country can only be performed by an Elder or leader who is from the community in which you are meeting. A non-Aboriginal person cannot perform a Welcome to Country and to do so is rude and disrespectful to the traditional owners and to all Aboriginal people.

### 5.4.3 Access to Aboriginal sites and stored Aboriginal objects

Local Aboriginal community access to Aboriginal sites and stored Aboriginal objects will be made available by Ravensworth Complex staff subject to reasonable safety and security measures, location of mining operations, two weeks prior notification (via telephone on 02 6570 0700) and availability of Ravensworth Complex assistance as per standard mine procedures. Once notice has been provided, Ravensworth Operations will respond within five working days to confirm access arrangements and conditions.

Local Aboriginal community members seeking access to Aboriginal sites will need to obtain prior written endorsement from one of the key knowledge holder groups or the Wonnarua Local Aboriginal Land Council<sup>7</sup> which identifies the name of the person, briefly describes their basis of interest and nominates the timeframe for access to the Aboriginal sites and stored Aboriginal objects. This measure will provide confidence to Ravensworth Complex that the access request is authentic. Access to stored Aboriginal objects will be provided subject to the procedures described for the interim keeping place described in Section 7.7. In summary, for security purposes the Aboriginal objects must not be removed from their storage location, however, adequate inspection table space will be available for those wishing to view the material. A keeping place visitor log book must be signed by persons accessing stored Aboriginal objects.

### 5.4.4 Aboriginal involvement in Aboriginal heritage management measures

Ravensworth Complex will give consideration to expressions of interest from suitably skilled, equipped and insured Aboriginal persons to provide services to protect Aboriginal sites (e.g. fencing) in Aboriginal heritage management areas. Consideration of any such expressions of interest will be made in accordance with Ravensworth Operation's procurement procedures.

Ravensworth Complex will put in place arrangements to facilitate involvement of RAPs in any future Aboriginal site salvage activities described in Section 9.

<sup>7</sup> Key knowledge holder groups are currently consisting of the Wonnarua Nation Aboriginal Corporation, the Wonnarua Traditional Custodians and the Plains Clan of the Wonnarua People.

## 5.5 Complaints protocol

The Environment and Community Manager will maintain a centralised location to record communications details of relevant external stakeholders and procedures for stakeholder contact including a Complaints Procedure.

The Complaints Procedure will utilise the Community Contact Line: 1800 620 553. The Contact Line will be in operation 24 hours per day, seven days a week. Complaints will be recorded and investigated by the Environment and Community Manager, or their delegate. All other complaints, via letter, in person or by fax (02 6570 0747) or email (Ravensworth\_eandc@glencore.com.au), will also be recorded and investigated by the Environment and Community Manager or their delegate. Initial response to the complainant will be made as soon as practicable by the Environment and Community Manager or their delegate.

Follow up correspondence with the complainant will be made explaining the outcome of complaint investigations.

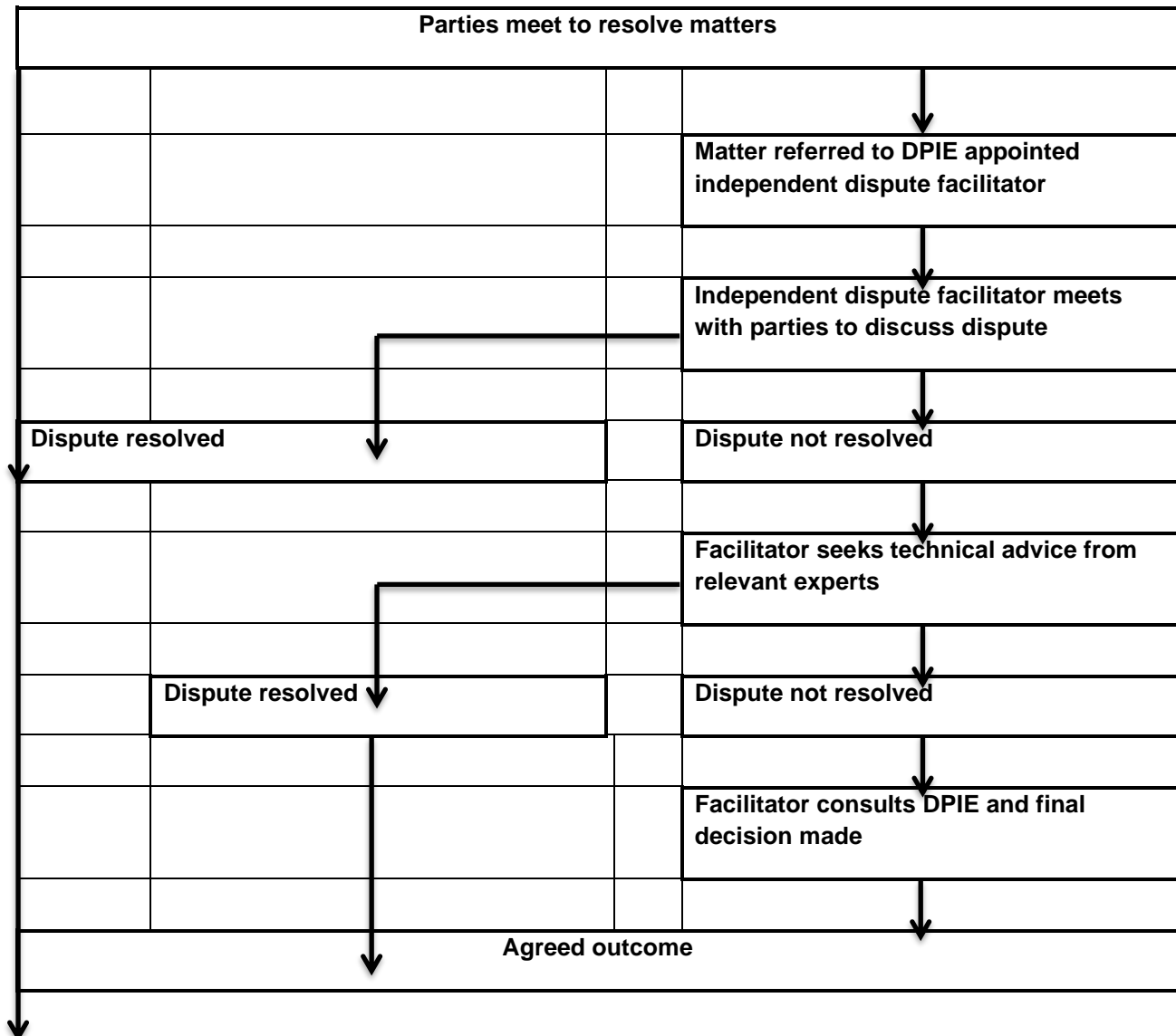
If required, the investigation will involve:

- receipt of complaint and details of the complaint will be recorded;
- investigation of the complaint and recording of details into an actions tracking database;
- responding to the complaint as soon as practicable following receipt and investigation; and
- corrective action and implementation of training, where applicable.

A summary of all complaints will be reported in the Ravensworth Mine Complex Annual Review.

The independent dispute resolution procedure in Table 3 will be followed if the complainant is not satisfied with the actions or Ravensworth Complex is not satisfied with those proposed by the complainant, and the DPIE agrees it is warranted.

*Table 3 Independent dispute resolution procedure*





## 6 Operational and Training Protocols

### 6.1 Obligation to protect Aboriginal cultural heritage

#### 6.1.1 Obligation to avoid harm

All employees, contractors, sub-contractors and visitors to the Project area and management areas have an obligation to avoid harming Aboriginal heritage unless engaged in approved development activity in an area where Aboriginal salvage obligations have been met as described in this plan.

The definition of harm used in this plan stems from the definition in Section 5 of the National Parks and Wildlife Act 1974 (NPW Act). The examples used below are for illustrative purposes and are not exhaustive.

Harm to an Aboriginal object or Aboriginal site means:

- moving or collecting stone artefacts (although picking up artefacts and inspecting them is acceptable as long as they are immediately returned to their original location);
- disturbing the earth where stone artefacts are located, e.g. by earthworks for drains, roads, etc.;
- breaking stone artefacts, e.g. by running over them in a vehicle;
- causing damage to a grinding groove sandstone platform by creating or exacerbating cracks;
- cutting down, disturbing or otherwise marking scarred trees.

Trivial or negligible impacts to Aboriginal objects are not regarded as harm.

#### 6.1.2 Obligation to protect

Mine personnel, contractors and subcontractors having responsibility for land management or construction have an obligation to protect Aboriginal heritage within their area of work responsibility.

Protection means active recognition of known Aboriginal heritage and active measures to avoid Aboriginal heritage. This may include fencing, mitigation of erosion effects, modification of work plans to avoid Aboriginal heritage such as changing vehicular access routes.

#### 6.1.3 Obligation to implement management measures for Aboriginal heritage impacts

Mining personnel, contractors and subcontractors have a responsibility to ensure that the appropriate Aboriginal heritage salvage has been conducted prior to or in association with their activities which impact Aboriginal objects.

#### 6.1.4 Aboriginal heritage induction and permitting process

All employees, contractors, sub-contractors and visitors to the Project area will be made aware of the obligation to avoid harm to Aboriginal heritage through an Aboriginal heritage component of a general site induction and Ravensworth Complex's permitting process (i.e. specifically the issuing and approval of Ground Disturbance Permits).

The Aboriginal heritage induction will include the following points expressed in plain language:

- Aboriginal sites occur extensively across the Project area;

- Aboriginal sites are of great significance to the Aboriginal community, are important to the wider community and will be treated with respect;
- Aboriginal sites are protected by law. The Project Approval for the mine includes conditions allowing impact to certain specified Aboriginal sites described in the EA and this plan;
- Aboriginal sites include stone tool sites, axe grinding groove sites and scarred trees; and
- Aboriginal sites can be hard to recognise, so refer to Aboriginal heritage maps prepared by the Project archaeologist if you need to see them. Many Aboriginal artefacts are hidden within the topsoil in “archaeologically sensitive areas”. Always refer to the ACHMP and/or the Environment and Community Manager if you’re not sure.

## 6.2 Implementation of this Plan

The responsibilities for implementing this plan are provided in Table 4.

As the document owner, the Environment and Community Manager is the contact point for any person that does not understand this plan or its requirements, and will provide guidance and training to any person that requires additional training regarding this plan.

**Table 4 Roles and responsibilities for Aboriginal heritage management**

Role	Responsibilities
Operations Manager	<ul style="list-style-type: none"> <li>• Ensure that adequate financial and personnel resources are made available for the implementation of the plan</li> </ul>
Environment and Community Manager	<ul style="list-style-type: none"> <li>• The person responsible for managing the overall implementation of the plan.</li> <li>• Include any actions under the plan in the Annual Review report.</li> <li>• Coordinate relevant specialist personnel to conduct Aboriginal site management (including salvage and monitoring) as specified in the plan.</li> <li>• Ensure inclusion of Aboriginal heritage in worker inductions through delivery or input to induction documents.</li> <li>• Distribute copies of this plan as required.</li> <li>• Maintain records of Aboriginal consultation and past plans.</li> <li>• Arrange for review of the plan under the circumstances set out in section 2.6.</li> </ul>

## 6.3 Measuring performance

Actions undertaken under the plan will be reported as part of the Ravensworth Complex Annual Review report to DPIE.

Compliance with the plan will be measured through the PA three yearly independent environmental audit.

The audit will include an assessment of compliance with the PA conditions and will include auditing the following measures:

- collection of all nominated sites;
- excavation of all nominated sites;
- inductions including Aboriginal heritage points are taking place;
- an interim Keeping Place is suitably established and furnished; and
- new finds records have been maintained.

## 7 Aboriginal Heritage Protection

### 7.1 Measures to protect Aboriginal sites

Measures to protect and manage Aboriginal sites and Aboriginal heritage management areas not impacted by development activities include fencing, land management, recording, interpretation and monitoring. The common measures for all sites and areas are described below.

### 7.2 Fencing

Fencing of Aboriginal sites shall constitute at a minimum star pickets placed outside the limits of observable Aboriginal objects and connected by a strand of high visibility cord. Where there is doubt over the extent of surface artefacts a competent person will be involved in an inspection to identify the extent of visible Aboriginal objects (usually stone artefacts) on the surface. Where grazing by stock poses a risk to a site, more substantial, stock proof fencing will be utilised.

Where there has been partial impact on an Aboriginal site the remaining portion shall be fenced.

Fencing around Aboriginal heritage management areas shall include more substantial fencing with gate and appropriate means of vehicular access control (e.g. locks on gates and signage with Ravensworth Complex contact numbers) to secure Aboriginal sites within each area.

Signage shall include text to the effect of the area being a “protected environmental area” or “Aboriginal heritage area”, that access is restricted and the contact number of appropriate Ravensworth Complex Personnel responsible for controlling access.

The alignment of fencing shall be recorded by GPS and records stored in association with this plan.

Fencing shall be maintained for the life of the mine and removed on conclusion of mining and rehabilitation activities.

Where new sites are identified within the Project area, those sites shall be fenced at the earliest opportunity of its recording.

Fencing may be omitted or removed if it brings undesired attention to the site from vandals or otherwise increases risk of damage to the site. If fencing is omitted or removed, other management options as discussed in Section 4.10 will be considered.

### 7.3 Land management

#### 7.3.1 Erosion control

Erosion control measures will be implemented at known protected Aboriginal sites under erosion threat. Erosion control actions may be undertaken in a manner that avoids disturbance to Aboriginal objects where possible. Minor movement of individual artefacts is permissible on the condition that artefacts are returned to their original location immediately after the erosion control management action. Before and after photographs will record erosion control actions. Such records will be retained in association with this plan.

#### 7.3.2 Bushfire hazard reduction

Clearing of excess fuel load will be undertaken in a manner that minimises ground disturbance. Preferred methods of hazard reduction include manual brush cutting and grass slashing with the slasher set at a minimum of 150 mm to avoid impacting surface Aboriginal stone artefacts. The principles of the Bush Fire Environmental Assessment Code Conditions for Hazard Reduction and Aboriginal Heritage (Rural Fire Service 2006) will be followed.

#### 7.3.3 Exclusion of stock

Stock will be excluded from identified Aboriginal sites and will be managed in the Offset Areas so as to avoid identified Aboriginal heritage values.



### 7.3.4 Weed control

Noxious weed control may occur within Aboriginal sites and Aboriginal heritage management areas provided that where physical weed removal is necessary, weeds are cut above ground level and not ripped from the ground so as to avoid ground disturbance. Where root balls have been inadvertently pulled from the surface, the soil shall be promptly returned to its original location and methods amended to avoid reoccurrence.

## 7.4 Interpretation panels

Interpretation panels will be installed at a suitable location near access points to the REA86 grinding grooves to advise visitors of the cultural significance and fragile nature of the site.

## 7.5 Digital recording

In June 2013, 3D Laser scanning was undertaken of the following Aboriginal sites in response to requests from RAPs:

- Site 37-3-0772 (Bowmans Creek – Figure 9); and
- Site 37-3-0982 (REA86 grinding grooves – Figure 10).

Records of the scans are to be retained in association with this plan on the Ravensworth *Sharepoint* document management system.



*Figure 9 – Digital Scan Image of Site 37-3-0772 Detail (Bowmans Creek)*



*Figure 10 – Digital Scan Image of Site 37-3-0982 (REA86 grinding grooves)*

## 7.6 Photographic monitoring

Photographic monitoring shall be undertaken at:

- up to 10 representative sites with more than 10 artefacts within management areas inside the Project area; and
- Site condition monitoring shall be undertaken at up to 20 representative sites.

The photographic and site condition monitoring will be completed on an annual basis by a suitably qualified archaeologist and in consultation with the project RAPs. The monitoring program will include the inspection of sites identified to be of higher heritage significance (such as the REA86 grinding grooves) and those considered to be susceptible to natural deterioration. A site included in the photographic monitoring group may also be in the site condition monitoring group if it is assessed that annual visits would be advantageous to maintain the site's condition.

Should any site included in either monitoring program be assessed as not requiring further monitoring, it can be substituted for another site.

The objectives of photographic monitoring are to:

- document land condition prior to management measures;
- measure effects of erosion;
- measure efficacy of land management measures to mitigate erosion; and
- document Aboriginal site condition over time.

The objectives of site condition monitoring are to:

- measure efficacy of land management measures to mitigate erosion; and
- document Aboriginal site condition over time.

Photographic monitoring will entail:

- taking photographs from at least two fixed locations at each site at least every three years;
- placing permanent photo points (such as a star picket with sign) at all photographic monitoring sites;
- All photographs will include a range pole placed 20 m from the camera in order to create a scaled reference point. If topography or vegetation does not allow the range pole to be placed 20 m from the camera, a shorter distance can be used but this will be noted in the report and replicated during the next photographic monitoring program;
- photographs will be taken in high definition with a digital SLR camera with images stored in digital form in the Ravensworth Complex's Records Management System in association with this plan;
- the results and recommendations of the photographic monitoring shall be presented in a monitoring report; and
- colour printouts will be available to interested RAPs on request for review as to the efficacy of land management measures in relation to Aboriginal heritage.

The site condition monitoring program will entail:

- visiting sites annually to identify impacts, recommend mechanisms to avoid impact and/or maintain, where appropriate, any preventive erosion mechanisms at the site;
- assessing the efficacy of any erosion control measures; and
- maintaining a photographic and written record of each site and presenting the results and recommendations in a monitoring report.

## 7.7 Interim Keeping Place

### 7.7.1 What is a Keeping Place?

A Keeping Place is a designated secure area with the purpose of storage and curation of Aboriginal cultural materials and their associated documentation. A permanent facility of this nature has not yet been established in the upper Hunter Valley, and Ravensworth Operations will continue ongoing consultation with its RAPs in the future development of such a facility.

### 7.7.2 Location and security

Until a permanent Keeping Place is established, an interim Keeping Place will be maintained within the Project area or nearby associated area of Ravensworth Complex. All materials are to be held in locked cabinets with access managed by the Environment and Community Manager or other nominated senior staff member. The cabinet is to be clearly labelled with the contents, conditions for access and requirements for the material to be transferred on completion of the Project. Access will be granted to RAPs and bona fide researchers.

The location of the interim Keeping Place for the Ravensworth Complex is shown on Figure 1. The details regarding the location and access have been provided to DPIE-Biodiversity Conservation Division and approved via Care Agreement Notice No. C0000192 dated 6 July 2015.

### 7.7.3 All Aboriginal objects and records

The keeping place will store all Aboriginal stone artefacts collected and excavated as part of the Project. Copies of all associated reports and associated records in bound hard copy and digital form will be stored in the same location as the artefacts.

Where objects are too large for inside storage, such as scarred trees, they will be kept in a suitable area protected from weather, as agreed following consultation with the RAPs.

All materials are to be packaged and labelled generally in accordance with Australian Museum standards (<http://australianmuseum.net.au/document/Archaeological-Collection-Deposition-Policy>).

## 7.7.4 Duration of care

The materials will be retained at the interim keeping place for the life of the Project unless otherwise approved by OEHL in a Section 85 Care and Control Permit (NPW Act).

At completion of the Project, the materials are to be transferred to a facility nominated by the RAPs subject to approval by OEHL in a Section 85 Care and Control Permit (NPW Act). Where a facility cannot be nominated, consideration will be given to lodging the material with either the Australian Museum (subject to its acceptance), a local Aboriginal cultural centre (if one is present) or a local heritage museum that can provide secure ongoing storage and curation. Where no facility can be identified, the material may be reburied within the Project area in a secure manner that allows later retrieval. The location must be chosen following consultation with all Ravensworth Operations RAPs and be notified to the OEHL in the designated manner.

# 8 Detailed Procedures

## 8.1 Discovery of Aboriginal ancestral remains

In the event known or suspected Aboriginal skeletal remains are encountered during the course of development the following procedure will be followed:

- all work close to the find will cease immediately and an area of 10 m radius around the find will be cordoned off with temporary construction fencing;
- the find will be immediately reported to the work supervisor who will immediately advise the Environment and Community Manager or other nominated senior staff member;
- Ravensworth Complex will promptly notify the police (as required for all human remains discoveries);
- Ravensworth Complex will contact OEHL for advice on identification of the skeletal material as Aboriginal and management of the material; and
- if the remains are Aboriginal ancestral remains, Key Knowledge Holders will be contacted within two working days and consultative arrangements will be made to discuss ongoing care of the remains, including advice on recommended forensic anthropologists.

## 8.2 Discovery of new Aboriginal sites

In the event of discovery of new Aboriginal sites which are more than 50 m from previously recorded boundaries of Aboriginal sites, all work close to the discovery will cease and an area of 10 m around the site will be fenced with temporary construction fencing. An archaeologist and members of the Key Knowledge Holders will be contacted to determine the significance of the Aboriginal object(s) present. New sites will be registered in the AHIMS database (see Section 10.2.1).

If the newly discovered sites are in impact areas (the approved Disturbance Area), the Aboriginal objects will be salvaged in accordance with the procedures in Section 9. If the newly discovered sites are located in Project Offset Areas where revegetation or land remediation works are required to meet conditions of the PA, consultation regarding proposed management actions will be undertaken with the RAPs.

If the site contains Aboriginal objects of interest such as retouched artefacts, rare features such as a hearth or includes plain evidence of a dense eroding deposit with more than 20 artefacts partially eroded from the soil, the site may be subject to salvage excavation in accordance with the methodology set out in Section 9.

On the completion of salvage at such sites, an AHIMS Aboriginal Site Impact Recording form will be completed (see Section 10.2). Copies of the forms will be archived. Digital copies will be submitted to the OEHL AHIMS Registrar soon after completion of salvage fieldwork. The form will be lodged within a reasonable time of fieldwork completion and certainly within six months.



## 9 Aboriginal Site Salvage Methods

### 9.1 Salvage scope

Salvage of any currently identified or new Aboriginal sites required prior to ground disturbance for the Project will follow the general scope outlined below and described in the following sections:

- Collection of surface artefacts from areas to be impacted;
- Cataloguing of all salvaged artefacts;
- Detailed analysis of suitable assemblages; and
- Long term curation at an Interim Keeping Place until a final keeping place is established.

The status of Aboriginal sites identified for the Project are summarised in Appendices A – C.

### 9.2 Salvage Collection

Collection of all Aboriginal stone artefacts will be undertaken at Aboriginal sites identified as being impacted by the Project. The following procedure will be followed:

- Each artefact will be marked with a pin flag;
- The flagged area will be photographed;
- The MGA coordinates of each flag will be recorded on a GPS receiver;
- All artefacts will be collected together in a zip lock plastic bag labelled as follows:
  - “Ravensworth Complex Surface Collection”;
  - SITE NAME;
  - DATE; and
  - “BAG N of N” (e.g. Bag 1 of 3 – if there is more than one bag from a single site); and
- A report will be prepared by a suitably qualified archaeologist and include a catalogue of collected artefacts with maps of collected sites, including the relevant GPS data for each.

### 9.3 Excavation Programs

Test excavations and expanded open area excavations may be undertaken to determine the extent of archaeological deposits or to recover a large and coherent stone artefact assemblage. If required, test excavations and expanded open area excavation programs for specific management areas will be developed in consultation with RAPs.

The following general procedures will be followed for test excavation programs:

- one or more transects will be established crossing over the centre of the original surface scatter of artefacts;
- test pits will be 1 m<sup>2</sup> excavated at 20 m intervals in at least 10 cm spits to the base of the topsoil which is typically around 20 cm deep;
- A maximum of 20 test pits will be dug at any one site (or sites if < 50 m from each other);
- If there is no discernible difference in soil layers, excavation may be undertaken in a single unit or larger spits;
- MGA coordinates of each pit will be recorded and a field map produced of the test pit layout; test pits will be labelled according to a logical easting northing system e.g. “100E 100N” referring to a measurement based on the south west corner of the 1 m<sup>2</sup> pit;
- All soil will be sieved through 5 mm and 3 mm nested screens;
- All artefacts for each pit in each square will be collected together into a zip lock plastic bag and labelled as described above in Section 9.2;

- a soil sample will be collected from each discernible soil layer within one test pit and collection of additional soil samples will be at the discretion of the supervising archaeologist and dependent on whether the sample contributes to essential understanding of the site; and
- a running total of artefacts and important features from each will be kept in the field on a physical recording form as a basis for deciding where excavation may be expanded.

The following general procedures will be followed for expanded open area excavations:

- An expanded open area excavation program may be triggered following test excavations where the presence of more than 30 artefacts greater than 15 mm in size in one square metre or the presence of significant archaeological features such as a hearth is identified. Expanded excavation will occur from one test pit where artefacts of greater interest and greater density have been discovered;
- The expanded excavation area shall be at least 50 m<sup>2</sup> unless the paucity of artefacts renders such work unfruitful. Expansion beyond 50 m<sup>2</sup> may be warranted if significant knapping floors, features or artefact concentrations are encountered. No more than 100 m<sup>2</sup> will be dug;
- The expanded areas will be dug in one single unit to the base of the artefact-bearing topsoil unless test excavation results show that excavation in spits is warranted. The decision to expand the excavation will be made by the project team based on the capacity of the potential expansion to contribute meaningful knowledge not already provided by the excavated sample. This decision will be documented;
- All soil will be sieved through 5 mm and 3 mm nested screens; and
- All artefacts recovered will be collected together into a zip lock plastic bag and labelled as described above in Section 9.2.

## 9.4 Salvage Consultation

The salvage of Aboriginal sites required for approved Project activities will be undertaken in consultation with Key Knowledge Holders and other RAPs, in accordance with the process described in the contemporary version of the Aboriginal consultation guidelines (currently DECCW, 2010).

Protocols for ongoing consultation with RAPs regarding the protection and management of Project Aboriginal sites are described in Section 5.4.

## 9.5 Salvage Analysis

All Aboriginal stone artefacts collected and excavated as a result of Project activities will be subject to basic archaeological analysis for the purpose of adding to the site catalogue. This analysis will include the following processes for all salvaged stone artefacts:

- Initial sorting and cleaning of excavated material;
- Adding to the Project register for Aboriginal artefacts;
- Basic description with provenance and basic attributes, including:
- Technological type;
- Implement type
- Raw material;
- Size measured in maximum possible length to nearest 1 mm and weight to 0.1 g; and
- Description of features such as use wear.

## 9.6 Salvage Report

A report documenting each salvage program will be produced addressing the standards of the '*Code of Practice for Archaeological Investigation of Aboriginal Objects in NSW*' (DECCW 2010) within two years of fieldwork completion.

Copies of any such report will be provided to Project RAPs for their records.

## 9.7 Curation of Salvage Artefacts

Any salvaged Aboriginal artefacts will be documented and stored with other materials salvaged for the Project in the nominated Interim Keeping Place, as described in Section 7.7.

# 10 Record Keeping and Reporting Requirements

## 10.1 Project records

Copies of all project records will be kept with the salvaged Aboriginal objects in the interim Keeping Place.

Project records include:

- this plan;
- field notes;
- field recording forms;
- maps showing site locations;
- excavation plans; and
- reports.

## 10.2 Statutory reporting requirements

### 10.2.1 Discovery of Aboriginal objects

Under s89A of the NPW Act, it is a requirement that OEH is notified of the existence of Aboriginal objects as soon as practicable after they are first identified. This is usually done through the completion of an OEH Aboriginal Site Card which is submitted to the Registrar of the AHIMS for inclusion on the Aboriginal sites database. Information regarding AHIMS and site recording forms can be downloaded from the OEH website located at:

<http://www.environment.nsw.gov.au/licences/DECCAHiMSSiteRecordingForm.htm>

### 10.2.2 Care and Control Permit application

Under s85A of the NPW Act Aboriginal objects remain the property, and under the protection of, the Crown until formal transfer to an Aboriginal owner or Aboriginal owners occurs. An application for a Care and Control Agreement will be made to OEH. Care and Control Agreement Application forms can be downloaded from the OEH website located at:

<http://www.environment.nsw.gov.au/licences/CareAgreements.htm>

### 10.2.3 Reporting impact to Aboriginal sites

Although not strictly required by the NPW Act, OEH expects that information on authorised impacts to Aboriginal sites be reported to them on the specified form which can be downloaded from the OEH website at: <http://www.environment.nsw.gov.au/resources/cultureheritage/120558asirf.pdf>

### 10.2.4 Reporting of ACHMP non-compliance incident

Should any Aboriginal cultural heritage site or area be impacted by works not authorised as described in this plan, Ravensworth Complex will report the non-compliance or potential non-compliance to the DPIE as soon as practicable after identifying the incident. This report will include a description of the incident, its circumstances and the corrective measures undertaken.



# 11 References

- AECOM 2018. *Ravensthorpe Operations Aboriginal Heritage. Detailed Aboriginal Lithic Analysis*
- Brayshaw, H., 1981. *Archaeological Survey Ravensthorpe Coal Washery and Rail Loading Facility near Liddell*
- Baker Archaeology Pty Ltd 2014. *Aboriginal Cultural Heritage Management Plan* (RAV SD PLN 0063). Ravensthorpe Operations
- DEC 2004. *National Parks and Wildlife Act 1974: Part 6 Approvals Interim Community Consultation Requirements for Applicants*
- DEC 2005. *Draft Guidelines for Aboriginal Cultural Heritage Impact Assessment and Community Consultation*
- DECCW 2010. *Aboriginal cultural heritage consultation requirements for proponents 2010*
- Glencore 2016. *Ravensthorpe Open Cut Plan for Heritage Management* (RAV SD PLN 0030)
- Long, A. 2012. *Reported Potential Aboriginal Scarred Trees Ravensthorpe North, Hunter Valley, NSW* Report to Xstrata Coal Ravensthorpe North Project
- Milliss R 1992. *Waterloo Creek: The Australian Day Massacre of 1838, George Gipps and the British Conquest of New South Wales* McPhee Gribble, Ringwood
- OzArk Environmental & Heritage Management 2012. *Cultural Heritage Management Plan. Ravensthorpe Underground Mine*. Report prepared on behalf of Xstrata Coal
- OzArk Environmental & Heritage Management 2015a. *Aboriginal Archaeological Salvage Report. Ravensthorpe Open Cut Salvage Program 2014*. Report prepared on behalf of Ravensthorpe Open Cut, Glencore
- OzArk Environmental & Heritage Management 2015b. *Archaeological Due Diligence Assessment. Proposed Erosion Control Works, Hillcrest Offset Area*. Report prepared for Ravensthorpe Open Cut, Glencore
- OzArk Environmental & Heritage Management 2018. *Aboriginal Cultural Heritage Assessment Report. Erosion Remediation Works, Hillcrest Offset Area*
- OzArk Environmental & Heritage Management 2019. *Ravensthorpe Operations AHIMS Gap Analysis*
- Rural Fire Service 2006. *Bush Fire Environmental Assessment Code Conditions for Hazard Reduction and Aboriginal Heritage*  
([http://www.rfs.nsw.gov.au/file\\_system/attachments/State08/Attachment\\_20061222\\_A7189EB2.pdf](http://www.rfs.nsw.gov.au/file_system/attachments/State08/Attachment_20061222_A7189EB2.pdf) accessed 28 June 2013)
- Tocomwall 2017. *Hillcrest Aboriginal Cultural Values Assessment Report: Final*
- Umwelt (Australia) 2010. *Ravensthorpe Operations Project Environmental Assessment Report* prepared on behalf of Xstrata Ravensthorpe Operations
- Umwelt (Australia) 2011a. *Ravensthorpe Operations Project Aboriginal Cultural Heritage Management Plan* (version one - in four volumes) Report prepared on behalf of Xstrata Ravensthorpe Operations

Umwelt (Australia) 2011b. *Ravensworth Operations Project Historic Heritage Management Plan*  
Report prepared on behalf of Xstrata Ravensworth Operations

Umwelt (Australia) 2013. *Interim Report on Stage 1 Aboriginal Cultural Heritage Works, Ravensworth Operations, NSW*. Report prepared on behalf of Ravensworth surface operations.

## 12 Definitions

Term	Definition
<b>Aboriginal heritage</b>	Those aspects of Aboriginal culture that are inherited from the past may be referred to as Aboriginal heritage. For the purpose of this plan the term is used to collectively refer to Aboriginal sites and archaeologically sensitive areas.
<b>Aboriginal object</b>	<p>A physical manifestation of past Aboriginal activity. The legal term is defined in the National Parks and Wildlife Act 1974 section 5 as:</p> <p>any deposit, object or material evidence (not being a handicraft made for sale) relating to the Aboriginal habitation of the area that comprises New South Wales, being habitation before or concurrent with (or both) the occupation of that area by persons of non-Aboriginal extraction, and includes Aboriginal remains.</p> <p>Typical examples include stone artefacts, grinding grooves, Aboriginal rockshelters which by definition include physical evidence of occupation, midden shell, hearths, stone arrangements and other landscape features which derive from past Aboriginal activity.</p>
<b>Aboriginal party</b>	An Aboriginal person or Aboriginal organisation identified in the Aboriginal consultation process. Typically used in reference to a registered Aboriginal party (RAP), which is an Aboriginal party that has provided a written request to be consulted in the course of the Ravensworth Operations Aboriginal cultural heritage assessment in accordance with the procedure set out in OEH Aboriginal consultation guidelines.
<b>Aboriginal scarred tree</b>	A tree of sufficient age to have been mature at the time of traditional Aboriginal hunter-gatherer life and therefore generally of more than 220 years in age with evidence of bark or cambium wood removal for the purpose of implement manufacture, footholds, bark sheet removal for shelter, or extraction of animals or other food. Care must be taken to distinguish Aboriginal scars from the much more common natural causes of branch tear, insect attack, animal impact, lightning strike and dieback. Scarred tree recognition guidelines exist to distinguish these features. Naturally scarred trees may be misidentified as Aboriginal scarred trees.
<b>Aboriginal site</b>	<p>The location where a person in the present day can observe one or more Aboriginal objects. The boundaries of a site are limited to the extent of the observed evidence. A 'site' does not include the inferred extent of unobserved Aboriginal objects (such as archaeological deposit).</p> <p>Different archaeologists can have varying definitions of a 'site' and may use the term to reflect the assumed extent of past Aboriginal activity beyond visible Aboriginal objects. Such use of the term risks defining all of Australia as a single 'site'.</p>
<b>Aboriginal stone artefact</b>	A stone object with morphological features derived from past Aboriginal activity such as intentional fracture, abrasion or impact. Artefacts are distinguished by morphology and context. Typically flaked stone artefacts are distinguished from naturally broken stone by recognition of clear marginal fracture initiation (typically hertzian/conchoidal or wedging initiation) on highly siliceous stone types which can often be exotic to the area. Care must be taken to distinguish modern broken stone in machine impacted contexts and therefore context must be carefully considered as well as morphology.
<b>AHIMS</b>	Aboriginal Heritage Information Management System – a computer software system employed by the Office of Environment and Heritage to manage many aspects of Aboriginal site recording and permitting. AHIMS includes an Aboriginal sites database which can be accessed via an internet portal.
<b>AHIP</b>	Aboriginal Heritage Impact Permit – issued to permit harm to Aboriginal objects under section 90 the NPW Act.
<b>Archaeological deposit</b>	Aboriginal objects occurring within one or more soil strata. The most common form of archaeological deposit relates to the presence of a single conflated layer of Aboriginal stone artefacts worked into the topsoil through bioturbation.
<b>Archaeologically sensitive area</b>	An area where Aboriginal objects were consistently found as a consequence of topsoil erosion as confirmed through test excavation or inferred by reference to comparable areas identified through test excavation elsewhere. High archaeological sensitivity means there is an expectation that artefacts occur persistently within the topsoil throughout the area and that disturbance to



Term	Definition
	topsoil is anticipated to disturb artefacts. Moderate sensitivity means that artefacts occur in a patchy manner within the topsoil and that disturbance to might possibly, but not always, disturb artefacts. Low sensitivity means that Aboriginal artefacts are not expected to occur in any predictable pattern. Any inadvertent disturbance to Aboriginal artefacts in areas of low sensitivity would be contrary to expectation.
<b>Backed artefact</b>	A backed artefact is a thin flake or blade-flake that has been shaped by secondary flaking (retouch) along one lateral margin. The retouched margin is typically steep and bipolar to form a blunt 'back' in the manner of a modern scalpel blade. Distinctive symmetrical and asymmetrical forms are typically found called geometric microliths and bondi points respectively. A thick symmetrical form, called an <i>elouera</i> , is typically the size of a mandarin segment.
<b>Bondi point</b>	See <i>backed artefact</i> definition.
<b>Grinding grooves</b>	Grinding grooves typically derive from the sharpening of stone hatchet heads on sandstone rock. Grooves appear as elliptical depressions of around 25 cm length with smooth bases. Although mostly occurring in association with water to wash the abraded stone dust away from the groove, such sites have been recorded away from water. Narrow grooves or broad abraded areas may occur less commonly and may be derived from spear sharpening or other grinding activities.
<b>Hearth</b>	A hearth is a collection of stones interpreted by an observer as being heat retainer stones assembled by Aboriginal people in the past as a fireplace. Care must be taken to avoid natural collections of stones, gathering of stones within potholes, concentrations of charcoal from burnt tree stumps or burnt clay patches from burnt tree stumps.
<b>Isolated Find</b>	A stone artefact site in an open context comprising a single artefact with no other observable artefacts occurring within 50 m. The distinction of "isolated find" sites from other types of stone artefact sites is arbitrary.
<b>Keeping place</b>	A keeping place is a room or facility with the express and exclusive purpose of storing Aboriginal cultural heritage materials with accompanying documentation in a secure and accessible manner which protects their cultural heritage values.
<b>Open stone artefact site/stone artefact site</b>	An unenclosed area where Aboriginal stone artefacts occur – typically exposed from a topsoil archaeological deposit by erosion. Typically the term is used to refer to two or more artefacts although this is an arbitrary distinction. A general 'rule of thumb' boundary definition employed by archaeologists is that artefacts or features more than 50 m apart are regarded as separate sites; however there is no theoretical imperative dictating such as rule. (The 50 m separation rule may not have been used consistently in previous site recording).

# 13 Document Information

## 13.1 Related Documents

Related documents, listed in **Table 13-1** below, are internal documents directly related to or referenced from this document.

Number	Title

**Table 13-1 – Related documents**

## 13.2 Reference Information

Reference information, listed in **Table 13-2** below, is information that is directly related to the development of this document or referenced from within this document.

Reference	Title

**Table 13-2 – Reference information**

## 13.3 Change Information

Full details of the document history are recorded in the document control register, by version. A summary of the current change is provided in **Table 13-3** below.

Version	Date	Reviewers	Change Summary
1	07/07/17	ROC E&C Department	Document relocated from Complex intranet to ROC intranet. Document originally developed 02/05/14 (v1) and updated for currency in 29/07/16 (v2) Updated requirements of annual photographic monitoring of the REA86 Grinding Grooves
2	13/08/18	ROC E&C Department	Updated to include two new sites identified during 2018 Annual Arch site monitoring works (RNOA IF1 & RNOA IF2) and revision of annual meeting frequency
3	28/08/19	ROC E&C Department	Updated to describe management of Aboriginal sites in Biodiversity Offset Areas, Conservation Agreement requirements and address DPIE-BCD review comments.

**Table 13-3 – Change information**

## Appendix A - Ravensthorpe Aboriginal Sites

Results of the stage one salvage program conducted by Umwelt in 2011/2012 are listed below.

AHIMS #	Site Name	Site type	(MGA) E	(MGA) N	Management	Status
37-3-0499	ASH 3	Isolated find	317582	6406366	Fencing	Completed 2012
37-3-0496	Ashton Brunkers Lane Site	Stone artefact site	317811	6406519	Excavation	Completed 2012
37-3-0543	Ashton EWA 80	Stone artefact site	317567	6406132	Fencing	Completed 2012
37-3-0542	Ashton EWA 81	Stone artefact site	317638	6406207	Fencing	Completed 2012
37-3-0556	Ashton EWA 89	Isolated find	317482	6406145	Collection	Completed 2012
37-6-0348	Bayswater Creek 5; Camberwell; Emu Ck;	Stone artefact site	314014	6406940	Collection	Completed 2012
37-3-0767	Bowman's Ck 12	Stone artefact site	315581	6412437	Fencing	Completed 2012
37-3-0772	Bowman's Ck 16	Possible Engraving	316359	6411486	No action	Undetermined
37-3-0390	Ravensthorpe Massacre	Conflict site	317105	6409190	No action	Undetermined
37-3-0391	Carrington Mine CM 43	Isolated find	312126	6412756	No action	No safe access
37-3-0392	Carrington Mine CM 44	Isolated find	312011	6412780	Fencing	Completed 2012
37-3-0472	CK02	Stone artefact site	313894	6407634	Collection	Completed 2012
37-3-0473	CK03	Isolated find	313961	6407805	Collection	Completed 2012
37-3-0474	CK04	Isolated find	314089	6407877	Collection	Completed 2012
37-3-0475	CK05	Isolated find	313729	6408411	Collection	Completed 2012
37-3-0476	CK06	Isolated find	314103	6409278	Collection	Completed 2012
37-3-0477	CK07	Stone artefact site	313992	6409336	Collection	Completed 2012
37-3-0479	CK09	Stone artefact site	313823	6409313	Collection	Completed 2012
37-2-1924	CK10	Isolated find	311278	6408965	Collection	Completed 2012
37-3-0480	CK12	Stone artefact site	312611	6408820	Collection	Completed 2012
37-3-0486	CK13	Stone artefact site	312587	6409069	Collection	Completed 2012
37-3-0485	CK14	Stone artefact site	312651	6408861	Collection	Completed 2012
37-3-0484	CK15	Stone artefact site	312723	6408732	Partial collection/ Fencing	Completed 2012
37-3-0483	CK16	Isolated find	313437	6410136	Collection	Completed 2012
37-3-0482	CK17	Stone artefact site	313554	6410288	Excavation	Completed 2012
37-3-0481	CK18	Isolated find	312990	6409967	Collection	Completed 2012
37-3-0488	CK19	Isolated find	313013	6409798	Collection	Completed 2012



AHIMS #	Site Name	Site type	(MGA) E	(MGA) N	Management	Status
37-3-0487	CK20	Isolated find	312488	6409597	Collection	Completed 2012
37-2-1951	CK21	Stone artefact site	311791	6406577	Fencing	Completed 2012
37-2-1926	CK23	Stone artefact site	311074	6407041	Fencing	Completed 2012
37-2-0897	CUM04;Ravensworth;	Stone artefact site	311294	6409190	Collection	Completed 2012
37-3-0374	CUM05;Ravensworth;	Isolated find	312484	6409080	Collection	Completed 2012
37-3-0375	CUM06;Ravensworth;	Isolated find	312514	6409220	Collection	Completed 2012
37-3-0376	CUM07;Ravensworth;	Stone artefact site	312591	6409141	Collection	Completed 2012
37-2-0898	CUM08;Ravensworth;	Isolated find	312024	6409300	Collection	Completed 2012
37-2-0899	CUM09;Ravensworth;	Isolated find	311694	6409390	Collection	Completed 2012
37-3-0377	CUM11;Ravensworth;	Isolated find	312654	6409620	Collection	Completed 2012
37-2-0912	CUM23;Ravensworth;	Stone artefact site	311644	6411410	Collection	Completed 2012
37-2-0914	CUM25;Ravensworth;	Stone artefact site	311789	6411380	Fencing	Completed 2012
37-2-0915	CUM26;Ravensworth;	Stone artefact site	311894	6411200	Fencing	Completed 2012
37-2-0916	CUM27;Ravensworth;	Stone artefact site	311954	6411180	Fencing	Completed 2012
37-2-0917	CUM28;Ravensworth;	Stone artefact site	312014	6411250	Fencing	Completed 2012
37-3-0378	CUM29;Ravensworth;	Stone artefact site	312934	6411370	Fencing	Completed 2012
37-3-0379	CUM30;Ravensworth;	Stone artefact site	313564	6410620	Fencing	Completed 2012
37-2-0918	CUM31;Ravensworth;	Isolated find	311504	6410690	Collection	Completed 2012
37-2-0919	CUM32;Ravensworth;	Isolated find	311704	6410890	Collection	Completed 2012
37-2-0920	CUM34;Ravensworth;	Isolated find	311904	6411090	No action	Lost by erosion
37-2-0921	CUM35;Ravensworth;	Stone artefact site	312004	6411090	Fencing	Completed 2012
37-2-0922	CUM36;Ravensworth;	Stone artefact site	311875	6411179	Fencing	Completed 2012
37-2-0924	CUM38;Ravensworth;	Stone artefact site	311904	6411290	No action	Lost by erosion
37-2-0804	CUM40;	Isolated find	311304	6407290	Collection	Interim Fencing 2012
37-2-0805	CUM41;	Stone artefact site	311069	6407236	Fencing	Completed 2012
37-2-0806	CUM42;	Stone artefact site	311217	6407134	Fencing	Completed 2012
37-2-0807	CUM43;	Stone artefact site	311361.95	6407057	Fencing	Completed 2012
37-3-0338	Cumnock South 1;	Stone artefact site	312760	6411765	Fencing	Completed 2012
37-3-0339	Cumnock South 2;	Stone artefact site	312863	6411823	Fencing	Completed 2012
37-3-0340	Cumnock South 3;	Stone artefact site	312682	6411811	Fencing	Completed 2012

AHIMS #	Site Name	Site type	(MGA) E	(MGA) N	Management	Status
37-3-0337	Cumnock South 4;	Isolated find	312662	6411539	Fencing	Completed 2012
37-2-0039	Emu Creek;	Stone artefact site	311449	6408913	Collection	Completed 2012
37-3-0033	Farrell's Creek;	Stone artefact site	313273	6404041	Excavation	Completed 2012
37-3-0644	Farrells Creek 1	Stone artefact site	313257	6404232	Fencing	Completed 2012
37-3-0451	LID 4	Stone artefact site	313899	6413368	Excavation	Completed 2012
37-3-0448	LID 6	Stone artefact site	313862	6413277	Fencing	Completed 2012
37-3-0028	Liddell Bayswater Creek	Stone artefact site	313844	6412891	Partial collection/ Fencing	Completed 2012
37-2-0144	Lower Emu Creek;	Stone artefact site	311173	6408999	Destroyed under Permit	Completed 2012
37-3-0285	MD 1;	Stone artefact site	313114	6404110	Fencing	Completed 2012
37-3-0287	MD 3;	Stone artefact site	313114	6404240	Fencing	Completed 2012
37-3-0288	MD 4;	Stone artefact site	313014	6404600	Fencing	Completed 2012
37-3-0588	MG1	Stone artefact site	317074	6410250	Collection	Completed 2012
37-3-0590	MG3	Stone artefact site	316458	6410968	Fencing	No access
37-3-0495	MO-IF3	Isolated find	317569	6406213	Collection	Completed 2012
37-3-0185	N 12;	Stone artefact site	313714	6405790	Collection	Interim Fencing 2012
37-3-0186	N 13;	Stone artefact site	313704	6406050	Collection	Interim Fencing 2012
37-3-0814	Narama Extended 01	Isolated find	316965	6406152	Fencing	Completed 2012
37-3-0818	Narama Extended 05	Stone artefact site	316563	6405149	Fencing	Completed 2012
37-3-0822	Narama Extended 09	Stone artefact site	317252	6405954	Fencing	Completed 2012
37-3-0828	Narama Extended 15	Isolated find	317190	6406064	Fencing	Completed 2012
37-3-0839	Narama Extended 26	Stone artefact site	316541	6405558	Fencing	Completed 2012
37-3-0841	Narama Extended 28	Stone artefact site	317157	6405891	Fencing	Completed 2012
37-3-0842	Narama Extended 29	Stone artefact site	317232	6405793	Fencing	Completed 2012
37-3-0843	Narama Extended 30	Isolated find	317398	6405687	Collection	Completed 2012
37-3-0846	Narama Extended 34	Isolated find	317293	6405962	Fencing	Completed 2012
37-3-0847	Narama Extended 35	Stone artefact site	317332	6405744	Collection	Completed 2012
37-3-0848	Narama Extended 36	Stone artefact site	316995	6405693	Fencing	Completed 2012
37-3-0293	Nard 2;	Stone artefact site	313885	6410429	Fencing	Completed 2012

AHIMS #	Site Name	Site type	(MGA) E	(MGA) N	Management	Status
37-3-0291	Nard 3;	Stone artefact site	313828	6410751	Fencing	Completed 2012
37-3-0290	Nard 4;	Stone artefact site	314305	6409789	Fencing	Completed 2012
37-3-0490	NARDELL N1	Stone artefact site	313754	6412440	Collection	Completed 2012
37-3-0491	NARDELL N2	Stone artefact site	314104	6412290	Fencing	Completed 2012
37-3-0492	NARDELL N4	Stone artefact site	313154	6412690	Fencing	Completed 2012
37-3-0493	NARDELL N5	Isolated find	313168	6412512	Fencing	Completed 2012
37-3-0011	Oatlands/Camberwell	Stone artefact site	313376	6403735	Fencing	Completed 2012
37-2-0051	Pikes Gully;	Stone artefact site	310367	6413008	Fencing	Completed 2012
37-3-0336	Rail Facility 1	Stone artefact site	314704	6412100	Fencing	Completed 2012
37-3-0925	REA001	Stone artefact site	315410	6412344	Collection	Completed 2012
37-3-0926	REA002	Isolated find	314754	6412273	Collection	Completed 2012
37-3-0927	REA003	Isolated find	314506	6412193	Fencing	Completed 2012
37-3-0928	REA004	Stone artefact site	316119	6412162	Collection	Completed 2012
37-3-0929	REA005	Isolated find	314065	6412053	Fencing	Completed 2012
37-3-0930	REA006	Stone artefact site	314073	6412039	Fencing	Completed 2012
37-3-0931	REA007	Isolated find	314103	6412041	Fencing	Completed 2012
37-3-0932	REA008	Isolated find	314085	6412031	Fencing	Completed 2012
37-3-0933	REA009	Isolated find	314316	6411847	Collection	Completed 2012
37-3-0934	REA010	Stone artefact site	313886	6411821	Collection	Completed 2012
37-3-0935	REA011	Stone artefact site	314243	6411762	Fencing	Completed 2012
37-3-0936	REA012	Stone artefact site	312888	6411780	Fencing	Completed 2012
37-2-3914	REA013	Stone artefact site	311807	6411479	Fencing	Completed 2012
37-2-3915	REA014	Stone artefact site	311770	6411473	Partial collection/ Fencing	Completed 2012
37-3-0937	REA015	Stone artefact site	312538	6411476	Fencing	Completed 2012
37-3-0938	REA016	Stone artefact site	312883	6411378	Fencing	Completed 2012
37-3-0939	REA017	Isolated find	313112	6411446	Fencing	Completed 2012
37-3-0940	REA018	Stone artefact site	314202	6411536	Fencing	Completed 2012
37-3-0941	REA019	Stone artefact site	314276	6411580	Fencing	Completed 2012
37-3-0942	REA020	Isolated find	314213	6411498	Fencing	Completed 2012
37-2-3916	REA021	Stone artefact site	312037	6411339	Fencing	Completed 2012



AHIMS #	Site Name	Site type	(MGA) E	(MGA) N	Management	Status
37-2-3917	REA022	Stone artefact site	311957	6411226	Fencing	Completed 2012
37-3-0943	REA023	Stone artefact site	312081	6411271	Fencing	Completed 2012
37-3-0944	REA024	Isolated find	312496	6411348	Fencing	Completed 2012
37-3-0945	REA025	Stone artefact site	312982	6411346	Fencing	Completed 2012
37-2-3918	REA026	Stone artefact site	311875	6411179	Fencing	Completed 2012
37-3-0946	REA027	Isolated find	312142	6411191	Fencing	Completed 2012
37-3-0947	REA028	Isolated find	312461	6411225	Fencing	Completed 2012
37-2-3919	REA029	Stone artefact site	312047	6411160	Fencing	Completed 2012
37-2-3920	REA030	Stone artefact site	312034	6411067	Fencing	Completed 2012
37-3-0948	REA031	Stone artefact site	312368	6411018	Fencing	Completed 2012
37-3-0949	REA032	Stone artefact site	313131	6411007	Fencing	Completed 2012
37-3-0950	REA033	Isolated find	317104	6411126	Collection	Completed 2012
37-2-3921	REA034	Stone artefact site	311699	6410925	Collection	Completed 2012
37-2-3922	REA035	Stone artefact site	311763	6410801	Fencing	Completed 2012
37-2-3923	REA036	Stone artefact site	311668	6410746	Fencing	Completed 2012
37-2-3924	REA037	Stone artefact site	311810	6410752	Fencing	Completed 2012
37-3-0951	REA038	Isolated find	312165	6410758	Collection	Completed 2012
37-2-3925	REA039	Isolated find	311558	6410552	Collection	Completed 2012
37-2-3927	REA041	Isolated find	311815	6410626	Collection	Completed 2012
37-2-3928	REA042	Stone artefact site	311881	6410147	Collection	Completed 2012
37-3-0952	REA043	Stone artefact site	313485	6410556	Fencing	Completed 2012
37-3-0953	REA044	Stone artefact site	313560	6410362	Fencing	Completed 2012
37-3-0954	REA045	Stone artefact site	313598	6410376	Collection	Completed 2012
37-2-3929	REA046	Isolated find	311958	6410194	Collection	Completed 2012
37-2-3930	REA047	Stone artefact site	311849	6410126	Collection	Completed 2012
37-2-3931	REA048	Isolated find	311545	6410113	Collection	Completed 2012
37-2-3932	REA049	Stone artefact site	311796	6410128	Collection	Completed 2012
37-3-0955	REA050	Stone artefact site	313683	6410276	Collection	Completed 2012
37-3-0956	REA051	Isolated find	313750	6410135	Fencing	Completed 2012
37-3-0957	REA052	Isolated find	314094	6410329	Collection	Completed 2012
37-3-0958	REA053	Isolated find	314570	6410226	Fencing	Completed 2012

AHIMS #	Site Name	Site type	(MGA) E	(MGA) N	Management	Status
37-2-3933	REA054	Stone artefact site	311790	6410100	Collection	Completed 2012
37-3-0959	REA055	Stone artefact site	312286	6410082	Collection	Completed 2012
37-2-3934	REA056	Isolated find	311460	6409957	Collection	Completed 2012
37-2-3935	REA057	Stone artefact site	311689	6410045	Collection	Completed 2012
37-3-0960	REA058	Stone artefact site	317580	6410398	Fencing	Completed 2012
37-3-0961	REA059	Isolated find	312112	6409993	Collection	Completed 2012
37-3-0962	REA060	Stone artefact site	312899	6409965	Collection	Completed 2012
37-3-0963	REA061	Stone artefact site	313711	6410077	Collection	Completed 2012
37-3-0964	REA062	Stone artefact site	314387	6410100	Fencing	Completed 2012
37-2-3936	REA063	Isolated find	311436	6409853	Collection	Completed 2012
37-3-0965	REA064	Stone artefact site	313913	6409937	Fencing	Completed 2012
37-3-0966	REA065	Stone artefact site	313987	6409991	Fencing	Completed 2012
37-3-0967	REA066	Stone artefact site	313797	6409908	Fencing	Completed 2012
37-3-0968	REA067	Stone artefact site	313811	6410002	Fencing	Completed 2012
37-3-0969	REA068	Stone artefact site	314026	6409795	Fencing	Completed 2012
37-3-0970	REA069	Isolated find	314335	6409764	Fencing	Completed 2012
37-3-0971	REA070	Stone artefact site	314482	6409838	Excavation	Completed 2012
37-3-0972	REA071	Isolated find	314577	6409836	Fencing	Completed 2012
37-3-0973	REA072	Isolated find	314520	6409796	Fencing	Completed 2012
37-3-0974	REA073	Isolated find	317344	6409980	Fencing	Completed 2012
37-3-0975	REA074	Stone artefact site	317513	6409915	Fencing	Completed 2012
37-3-0976	REA075	Stone artefact site	317484	6409832	Fencing	Completed 2012
37-3-0977	REA076	Isolated find	312304	6409647	Collection	Completed 2012
37-3-0978	REA077	Stone artefact site	312682	6409650	Collection	Completed 2012
37-3-0979	REA078	Isolated find	312815	6409583	Collection	Completed 2012
37-2-3937	REA079	Isolated find	311535	6409595	Collection	Completed 2012
37-2-3938	REA080	Stone artefact site	311483	6409517	Collection	Completed 2012
37-2-3939	REA081	Isolated find	311506	6409506	Collection	Completed 2012
37-2-3940	REA082	Stone artefact site	312007	6409369	Collection	Completed 2012
37-2-3941	REA083	Isolated find	311959	6409401	Collection	Completed 2012
37-3-0980	REA084	Stone artefact site	312116	6409376	Collection	Completed 2012

AHIMS #	Site Name	Site type	(MGA) E	(MGA) N	Management	Status
37-3-0981	REA085	Stone artefact site	312655	6409555	Collection	Completed 2012
37-3-0982	REA086	Complex (GG + stone artefacts)	314120	6409577	Fencing	Completed 2012
37-3-0983	REA087	Stone artefact site	314364	6409693	Fencing	Completed 2012
37-3-0984	REA088	Stone artefact site	314344	6409667	Excavation	Completed 2012
37-3-0985	REA089	Isolated find	317742	6409392	Fencing	Completed 2012
37-3-0986	REA090	Stone artefact site	312293	6409414	Collection	Completed 2012
37-2-3942	REA091	Stone artefact site	311637	6409381	Collection	Completed 2012
37-2-3943	REA092	Isolated find	311630	6409268	Collection	Completed 2012
37-2-3944	REA093	Stone artefact site	311657	6409271	Collection	Completed 2012
37-2-3945	REA094	Isolated find	312062	6409301	Collection	Completed 2012
37-3-0987	REA095	Isolated find	312192	6409303	Collection	Completed 2012
37-3-0988	REA096	Isolated find	312280	6409310	Collection	Completed 2012
37-3-0989	REA097	Stone artefact site	312352	6409347	Collection	Completed 2012
37-3-0990	REA098	Isolated find	313188	6409363	Collection	Completed 2012
37-3-0991	REA099	Isolated find	312353	6409264	Collection	Completed 2012
37-3-0992	REA100	Isolated find	312116	6409221	Collection	Completed 2012
37-3-0993	REA101	Isolated find	312476	6409107	Collection	Completed 2012
37-3-0994	REA102	Isolated find	312598	6409107	Collection	Completed 2012
37-3-0995	REA103	Stone artefact site	312618	6409074	Collection	Completed 2012
37-3-0996	REA104	Stone artefact site	312674	6409093	Collection	Completed 2012
37-3-0997	REA105	Isolated find	312889	6409092	Collection	Completed 2012
37-3-0998	REA106	Stone artefact site	313326	6409113	Collection	Completed 2012
37-2-3946	REA107	Stone artefact site	311329	6408928	Collection	Completed 2012
37-2-3947	REA108	Stone artefact site	311327	6408885	Collection	Completed 2012
37-2-3948	REA109	Stone artefact site	311361	6408870	Excavation	Completed 2012
37-2-3949	REA110	Stone artefact site	311297	6408846	Excavation	Completed 2012
37-2-3950	REA111	Stone artefact site	311306	6408838	Excavation	Completed 2012
37-2-3951	REA112	Stone artefact site	311276	6408814	Excavation	Completed 2012
37-2-3952	REA113	Isolated find	311430	6408821	Collection	Completed 2012
37-2-3953	REA114	Isolated find	311487	6408797	Collection	Completed 2012



AHIMS #	Site Name	Site type	(MGA) E	(MGA) N	Management	Status
37-2-3954	REA115	Stone artefact site	311740	6408960	Collection	Completed 2012
37-2-3955	REA116	Isolated find	311722	6408937	Collection	Completed 2012
37-2-3956	REA117	Stone artefact site	311750	6408913	Collection	Completed 2012
37-3-0999	REA118	Stone artefact site	312420	6408948	Collection	Completed 2012
37-3-1000	REA119	Stone artefact site	312593	6408928	Collection	Completed 2012
37-3-1001	REA120	Stone artefact site	312631	6408921	Excavation	Completed 2012
37-3-1002	REA121	Stone artefact site	312629	6408829	Collection	Completed 2012
37-3-1003	REA122	Stone artefact site	312646	6408814	Collection	Completed 2012
37-3-1004	REA123	Stone artefact site	313411	6408909	Collection	Completed 2012
37-3-1006	REA125	Isolated find	312436	6408537	Collection	Interim Fencing 2012
37-3-1007	REA126	Stone artefact site	312707	6408649	Collection	Completed 2012
37-3-1008	REA127	Isolated find	312939	6408571	Collection	Interim Fencing 2012
37-2-3957	REA128	Stone artefact site	311671	6408154	Collection	Completed 2012
37-2-3958	REA129	Isolated find	311380	6408078	Collection	Interim Fencing 2012
37-2-3959	REA130	Stone artefact site	311506	6407915	Collection	Interim Fencing 2012
37-3-1010	REA132	Isolated find	317660	6407882	Collection	Completed 2012
37-3-1011	REA133	Stone artefact site	317656	6407682	Fencing	Completed 2012
37-2-3960	REA134	Stone artefact site	311732	6407771	Collection	Interim Fencing 2012
37-2-3961	REA135	Isolated find	311770	6407603	Collection	Interim Fencing 2012
37-2-3962	REA136	Isolated find	311238	6407466	Collection	Completed 2012
37-2-3963	REA137	Isolated find	311859	6407511	Collection	Interim Fencing 2012
37-2-3964	REA138	Isolated find	311221	6407366	Collection	Completed 2012
37-2-3965	REA139	Stone artefact site	311866	6407259	Collection	Completed 2012
37-3-1012	REA140	Stone artefact site	317599	6407486	Collection	Completed 2012
37-3-1013	REA141	Stone artefact site	318206	6407186	Fencing	Completed 2012
37-3-1014	REA142	Stone artefact site	318192	6407008	Collection	Completed 2012

<b>AHIMS #</b>	<b>Site Name</b>	<b>Site type</b>	<b>(MGA) E</b>	<b>(MGA) N</b>	<b>Management</b>	<b>Status</b>
37-3-1015	REA143	Isolated find	318066	6406897	Partial collection/ Fencing	Completed 2012
37-3-1016	REA144	Isolated find	318003	6406832	Partial collection/ Fencing	Completed 2012
37-3-1017	REA145	Isolated find	317728	6406421	Partial collection/ Fencing	Completed 2012
37-3-1018	REA146	Stone artefact site	317572	6406205	Collection	Completed 2012
37-3-1019	REA147	Stone artefact site	312219	6406329	Partial collection/ Fencing	Completed 2012
37-3-1020	REA148	Stone artefact site	312198	6406207	Fencing	Completed 2012
37-3-1021	REA149	Isolated find	312371	6406117	Fencing	Completed 2012
37-3-1022	REA150	Isolated find	313421	6406304	Collection	Interim Fencing 2012
37-3-1023	REA151	Stone artefact site	313518	6406232	Collection	Interim Fencing 2012
37-3-1024	REA152	Isolated find	313397	6406193	Collection	Interim Fencing 2012
37-3-1025	REA153	Isolated find	313469	6406153	Collection	Interim Fencing 2012
37-3-1026	REA154	Isolated find	313539	6406138	Collection	Interim Fencing 2012
37-3-1027	REA155	Stone artefact site	313655	6406116	Collection	Interim Fencing 2012
37-3-1028	REA156	Stone artefact site	313706	6406042	Collection	Interim Fencing 2012
37-3-1029	REA157	Isolated find	313452	6406046	Collection	Interim Fencing 2012
37-3-1030	REA158	Stone artefact site	313634	6405953	Collection	Interim Fencing 2012
37-3-1031	REA159	Stone artefact site	313649	6406040	Collection	Interim Fencing 2012
37-3-1032	REA160	Stone artefact site	313477	6406108	Collection	Interim Fencing 2012
37-3-1033	REA161	Stone artefact site	313781	6405886	Collection	Interim Fencing 2012
37-3-1034	REA162	Stone artefact site	312147	6406043	Fencing	Completed 2012

AHIMS #	Site Name	Site type	(MGA) E	(MGA) N	Management	Status
37-3-1035	REA163	Stone artefact site	312325	6405975	Fencing	Completed 2012
37-3-1036	REA164	Isolated find	312846	6405982	Collection	Interim Fencing 2012
37-3-1037	REA165	Isolated find	312588	6405856	Fencing	Completed 2012
37-3-1038	REA166	Stone artefact site	313360	6405885	Collection	Interim Fencing 2012
37-3-1039	REA167	Stone artefact site	313545	6405891	Collection	Interim Fencing 2012
37-3-1040	REA168	Isolated find	312853	6405799	Collection	Completed 2012
37-3-1041	REA169	Isolated find	313594	6405770	Collection	Interim Fencing 2012
37-3-1042	REA170	Isolated find	312930	6405707	Collection	Completed 2012
37-3-1043	REA171	Stone artefact site	313006	6405722	Collection	Interim Fencing 2012
37-3-1044	REA172	Isolated find	313363	6405723	Collection	Interim Fencing 2012
37-3-1045	REA173	Stone artefact site	313572	6405685	Collection	Interim Fencing 2012
37-3-1046	REA174	Stone artefact site	312859	6405687	Collection	Completed 2012
37-3-1047	REA175	Stone artefact site	312845	6405640	Collection	Completed 2012
37-3-1048	REA176	Isolated find	312767	6405627	Fencing	Completed 2012
37-3-1049	REA177	Stone artefact site	312877	6405616	Collection	Completed 2012
37-3-1050	REA178	Stone artefact site	313075	6405562	Collection	Completed 2012
37-3-1051	REA179	Stone artefact site	313495	6405612	Collection	Interim Fencing 2012
37-3-1052	REA180	Isolated find	313411	6405562	Collection	Interim Fencing 2012
37-3-1053	REA181	Isolated find	312707	6405568	Fencing	Completed 2012
37-3-1054	REA182	Stone artefact site	312826	6405561	Fencing	Completed 2012
37-3-1055	REA183	Stone artefact site	312818	6405497	Fencing	Completed 2012
37-3-1056	REA184	Isolated find	312902	6405477	Fencing	Completed 2012
37-3-1057	REA185	Stone artefact site	313188	6405395	Collection	Completed 2012
37-3-1058	REA186	Isolated find	313424	6405407	Collection	Interim Fencing 2012
37-3-1059	REA187	Isolated find	317349	6405552	Collection	Completed 2012



AHIMS #	Site Name	Site type	(MGA) E	(MGA) N	Management	Status
37-3-1060	REA188	Isolated find	312979	6405382	Fencing	Completed 2012
37-3-1061	REA189	Isolated find	313438	6405367	Collection	Interim Fencing 2012
37-3-1062	REA190	Stone artefact site	312681	6405314	Fencing	Completed 2012
37-3-1063	REA191	Stone artefact site	312723	6405286	Fencing	Completed 2012
37-3-1064	REA192	Isolated find	312949	6405230	Fencing	Completed 2012
37-3-1065	REA193	Stone artefact site	313068	6405269	Fencing	Completed 2012
37-3-1066	REA194	Isolated find	313485	6405259	Fencing	Completed 2012
37-3-1067	REA195	Isolated find	313311	6405178	Fencing	Completed 2012
37-3-1068	REA196	Stone artefact site	317109	6405345	Excavation	Completed 2012
37-3-1069	REA197	Stone artefact site	317082	6405290	Fencing	Completed 2012
37-3-1070	REA198	Stone artefact site	316967	6405263	Excavation	Completed 2012
37-3-1071	REA199	Stone artefact site	316933	6405214	Excavation	Completed 2012
37-3-1072	REA200	Isolated find	316828	6405177	Collection	Completed 2012
37-3-1073	REA201	Stone artefact site	312957	6405192	Fencing	Completed 2012
37-3-1074	REA202	Isolated find	313028	6405124	Fencing	Completed 2012
37-3-1075	REA203	Isolated find	313079	6405133	Fencing	Completed 2012
37-3-1076	REA204	Stone artefact site	312703	6405069	Fencing	Completed 2012
37-3-1077	REA205	Stone artefact site	313179	6405122	Fencing	Completed 2012
37-3-1078	REA206	Isolated find	313523	6405135	Collection	Completed 2012
37-3-1079	REA207	Stone artefact site	313236	6405039	Fencing	Completed 2012
37-3-1080	REA208	Isolated find	313562	6404999	Fencing	Completed 2012
37-3-1081	REA209	Stone artefact site	313320	6404943	Fencing	Completed 2012
37-3-1082	REA210	Stone artefact site	313609	6404881	Fencing	Completed 2012
37-3-1083	REA211	Stone artefact site	312921	6404798	Fencing	Completed 2012
37-3-1084	REA212	Stone artefact site	313260	6404863	Fencing	Completed 2012
37-3-1085	REA213	Scarred tree	316072	6404179	Fencing	Completed 2012
37-3-1086	REA214	Stone artefact site	313817	6404823	Fencing	Completed 2012
37-3-1087	REA215	Stone artefact site	313931	6404756	Fencing	Completed 2012
37-3-1088	REA216	Stone artefact site	316389	6404920	Fencing	Completed 2012
37-3-1089	REA217	Stone artefact site	312750	6404655	Fencing	Completed 2012

AHIMS #	Site Name	Site type	(MGA) E	(MGA) N	Management	Status
37-3-1090	REA218	Stone artefact site	312990	6404539	Fencing	Completed 2012
37-3-1091	REA219	Stone artefact site	313347	6404575	Fencing	Completed 2012
37-3-1092	REA220	Isolated find	313660	6404699	Fencing	Completed 2012
37-3-1093	REA221	Stone artefact site	313672	6404652	Fencing	Completed 2012
37-3-1094	REA222	Stone artefact site	314270	6404446	Collection	Interim Fencing 2012
37-3-1095	REA223	Stone artefact site	314832	6404332	Fencing	Completed 2012
37-3-1096	REA224	Stone artefact site	315134	6404426	Fencing	Completed 2012
37-3-1097	REA225	Isolated find	315643	6404404	Collection	Completed 2012
37-3-1098	REA226	Stone artefact site	316083	6404441	Collection	Completed 2012
37-3-1099	REA227	Isolated find	316325	6404609	Collection	Completed 2012
37-3-1100	REA228	Stone artefact site	316344	6404618	Partial collection/ Fencing	Completed 2012
37-3-1101	REA229	Stone artefact site	316217	6404491	Partial collection/ Fencing	Completed 2012
37-3-1102	REA230	Stone artefact site	313050	6404259	Fencing	Completed 2012
37-3-1103	REA231	Stone artefact site	313051	6404197	Fencing	Completed 2012
37-3-1104	REA232	Stone artefact site	313273	6404041	Fencing	Completed 2012
37-3-1105	REA233	Stone artefact site	313192	6403873	Fencing	Completed 2012
37-3-1106	REA234	Isolated find	313408	6403862	Fencing	Completed 2012
37-3-1107	REA235	Stone artefact site	313451	6403927	Fencing	Completed 2012
37-3-1108	REA236	Stone artefact site	313984	6404141	Excavation	Pending Oct 2013
37-3-1109	REA237	Stone artefact site	315059	6404229	Fencing	Completed 2012
37-3-1110	REA238	Stone artefact site	315167	6404298	Fencing	Completed 2012
37-3-1111	REA239	Stone artefact site	315617	6404338	Collection	Completed 2012
37-3-1112	REA240	Isolated find	316086	6404365	Collection	Completed 2012
37-3-1113	REA241	Isolated find	316197	6404408	Partial collection/ Fencing	Completed 2012
37-3-1114	REA242	Isolated find	316207	6404368	Collection	Completed 2012
37-3-1115	REA243	Isolated find	316165	6404359	Collection	Completed 2012

AHIMS #	Site Name	Site type	(MGA) E	(MGA) N	Management	Status
37-3-1117	REA245	Stone artefact site	313234	6405311	Collection	Completed 2012
37-3-1118	REA246	Stone artefact site	312804	6406298	Partial collection/ Fencing	Interim Fencing 2012
37-3-1119	REA247	Stone artefact site	315974	6404445	Excavation	Completed 2012
37-3-1120	REA248	Stone artefact site	315337	6404508	Collection	Completed 2010
37-3-1121	REA249	Isolated find	316509	6404940	Collection	Completed 2012
37-3-1122	REA250	Isolated find	314402	6409918	Partial collection/ Fencing	Completed 2012
37-3-1123	REA251	Isolated find	314083	6411495	Collection	Completed 2012
37-3-1124	REA252	Stone artefact site	314239	6411422	Collection	Completed 2012
37-3-1125	REA253	Isolated find	313855	6411790	Collection	Completed 2012
37-3-1126	REA254	Isolated find	312865	6413315	Collection	Completed 2012
37-3-1127	REA255	Stone artefact site	313004	6413255	Collection	Pending Oct 2013
37-3-1128	REA256	Isolated find	313859	6412438	Collection	Completed 2012
37-3-1129	REA257	Isolated find	314026	6411356	Collection	Completed 2012
37-3-1130	REA258	Stone artefact site	314332	6411699	Excavation	Completed 2012
37-3-1131	REA259	Stone artefact site	314311	6411700	Collection	Completed 2012
37-3-1132	REA260	Isolated find	313956	6408548	Collection	Completed 2012
37-3-1133	REA261	Isolated find	313821	6408505	Collection	Completed 2012
37-3-1134	REA262	Stone artefact site	314333	6407978	Collection	Completed 2012
37-3-1135	REA263	Isolated find	314064	6408111	Collection	Completed 2012
37-3-1226	REA264	Isolated find	313954	6411639	Collection	Completed 2012
37-3-1227	REA265	Isolated find	313968	6411619	Collection	Completed 2012
37-3-1228	REA266	Isolated find	314175	6410680	Collection	Completed 2012
37-3-1229	REA267	Isolated find	314027	6410383	Partial collection/ Fencing	Completed 2012
37-3-1230	REA268	Isolated find	314332	6410309	Collection	Completed 2012
37-3-1231	REA269	Isolated find	314464	6409913	Fencing	Completed 2012
TBA	REA270	Stone artefact site	314353	6408980	Excavation	Completed 2012
37-3-1233	REA271	Stone artefact site	314294	6408946	Collection	Completed 2012



AHIMS #	Site Name	Site type	(MGA) E	(MGA) N	Management	Status
37-3-1234	REA272	Stone artefact site	313352	6407516	Collection	Completed 2012
37-3-1235	REA273	Isolated find	313440	6407599	Collection	Interim Fencing 2012
37-3-1236	REA274	Stone artefact site	316659	6405129	Collection	Completed 2012
TBA	REA275	Isolated find	315380	6404496	Collection	Completed 2010
TBA	REA276	Stone artefact site	316513	6411828	Fencing	Completed 2012
37-3-1238	REA277	Stone artefact site	316734	6411403	Excavation	Completed 2012
37-3-1239	REA278	Stone artefact site	317240	6410956	Collection	Completed 2012
37-3-1240	REA279	Stone artefact site	317428	6405826	Collection	Completed 2012
37-3-1241	REA280	Stone artefact site	314079	6412055	Fencing	Completed 2012
37-3-1242	REA281	Stone artefact site	314056	6412003	Fencing	Completed 2012
37-3-1243	REA282	Stone artefact site	314067	6411985	Fencing	Completed 2012
37-3-1244	REA283	Stone artefact site	314088	6411989	Fencing	Completed 2012
37-3-1245	REA284	Stone artefact site	312242	6411499	Fencing	Completed 2012
37-3-1246	REA285	Stone artefact site	314273	6411546	Collection	Completed 2012
37-2-4870	REA286	Stone artefact site	311647	6410997	Partial collection/ Fencing	Completed 2012
TBA	REA287	Stone artefact site	314387	6409848	Collection	Completed 2012
TBA	REA288	Stone artefact site	314361	6409807	Collection	Completed 2012
37-3-1247	REA289	Stone artefact site	314290	6409250	Collection	Completed 2012
37-2-4871	REA290	Stone artefact site	311251	6408637	Collection	Completed 2012
TBA	REA291	Stone artefact site	311250	6408573	Collection	Completed 2012
37-2-4872	REA292	Stone artefact site	311240	6408520	Collection	Completed 2012
37-3-1251	REA293	Stone artefact site	312505	6408314	Collection	Completed 2012
37-2-4883	REA294	Stone artefact site	311625	6408167	Collection	Completed 2012
37-2-4884	REA295	Stone artefact site	311643	6408139	Collection	Completed 2012
37-3-1300	REA296	Stone artefact site	312854	6408203	Collection	Completed 2012
37-3-1301	REA297	Stone artefact site	312902	6408162	Collection	Completed 2012
TBA	REA298	Stone artefact site	314016	6406905	Collection	Completed 2012
37-2-4880	REA299	Stone artefact site	311987	6406574	Fencing	Completed 2012
37-3-1303	REA300	Stone artefact site	316243	6404376	Fencing	Completed 2012

AHIMS #	Site Name	Site type	(MGA) E	(MGA) N	Management	Status
37-3-1302	REA301	Stone artefact site	317767	6406486	Collection	Completed 2012
37-3-1304	REA302	Stone artefact site	317533	6406229	Collection	Completed 2012
37-3-1306	REA303	Stone artefact site	316956	6406179	Fencing	Completed 2012
37-3-1305	REA304	Stone artefact site	317291	6405892	Fencing	Completed 2012
37-3-1312	REA306	Stone artefact site	316217	6404414	Collection	Completed 2012
37-3-1311	REA307	Stone artefact site	316605	6405745	Fencing	Completed 2012
37-3-1310	REA308	Stone artefact site	312262	6406103	Fencing	Completed 2012
37-3-1309	REA309	Stone artefact site	313433	6405952	Collection	Interim Fencing 2012
37-3-1314	REA310	Stone artefact site	313304	6405871	Collection	Interim Fencing 2012
37-3-1313	REA311	Stone artefact site	313334	6405807	Collection	Interim Fencing 2012
37-3-1307	REA312	Stone artefact site	313696	6405817	Collection	Interim Fencing 2012
37-3-1308	REA313	Stone artefact site	313641	6405786	Collection	Interim Fencing 2012
37-3-1321	REA314	Stone artefact site	313646	6405748	Collection	Interim Fencing 2012
37-3-1315	REA315	Stone artefact site	313406	6405732	Collection	Interim Fencing 2012
37-3-1316	REA316	Stone artefact site	312896	6405747	Collection	Completed 2012
37-3-1317	REA317	Stone artefact site	312905	6405695	Collection	Completed 2012
37-3-1318	REA318	Stone artefact site	312998	6405714	Collection	Interim Fencing 2012
37-3-1319	REA319	Stone artefact site	313076	6405724	Collection	Interim Fencing 2012
37-3-1320	REA320	Stone artefact site	313101	6405686	Collection	Interim Fencing 2012
37-3-1322	REA321	Stone artefact site	313385	6405659	Collection	Interim Fencing 2012
37-3-1323	REA322	Stone artefact site	313520	6405642	Collection	Interim Fencing 2012
37-3-1324	REA323	Stone artefact site	312832	6405593	Fencing	Completed 2012
37-3-1325	REA324	Stone artefact site	312774	6405570	Fencing	Completed 2012
37-3-1326	REA325	Stone artefact site	312960	6405643	Collection	Completed 2012

AHIMS #	Site Name	Site type	(MGA) E	(MGA) N	Management	Status
37-3-1327	REA326	Stone artefact site	313407	6405589	Collection	Interim Fencing 2012
37-3-1328	REA327	Stone artefact site	313471	6405566	Collection	Interim Fencing 2012
37-3-1329	REA328	Stone artefact site	313591	6405573	Collection	Interim Fencing 2012
37-3-1330	REA329	Stone artefact site	313471	6405525	Collection	Interim Fencing 2012
37-3-1331	REA331	Stone artefact site	313579	6405412	Collection	Interim Fencing 2012
37-3-1332	REA332	Stone artefact site	313635	6405379	Collection	Interim Fencing 2012
37-3-1333	REA333	Stone artefact site	313710	6405320	Collection	Completed 2012
37-3-1334	REA334	Stone artefact site	313760	6405279	Fencing	Completed 2012
37-3-1335	REA335	Stone artefact site	313591	6405253	Collection	Completed 2012
37-3-1336	REA336	Stone artefact site	313642	6405247	Collection	Completed 2012
37-3-1337	REA337	Stone artefact site	312975	6405267	Fencing	Completed 2012
37-3-1338	REA338	Stone artefact site	312968	6405248	Fencing	Completed 2012
37-3-1339	REA339	Stone artefact site	312987	6405245	Fencing	Completed 2012
37-3-1340	REA340	Stone artefact site	312983	6405201	Fencing	Completed 2012
37-3-1341	REA341	Stone artefact site	313187	6405201	Fencing	Completed 2012
37-3-1342	REA342	Stone artefact site	313268	6405144	Fencing	Completed 2012
37-3-1343	REA343	Stone artefact site	314993	6404351	Fencing	Completed 2012
37-3-1344	REA344	Stone artefact site	315029	6404384	Fencing	Completed 2012
37-3-1345	REA345	Stone artefact site	314949	6404303	Fencing	Completed 2012
37-3-1346	REA346	Stone artefact site	314897	6404261	Fencing	Completed 2012
37-3-1347	REA347	Stone artefact site	314969	6404226	Fencing	Completed 2012
37-3-1348	REA348	Stone artefact site	315113	6404245	Fencing	Completed 2012
TBA	REA351	Stone artefact site	316139	6412234	Fencing	Completed 2012
37-3-1350	REA352	Stone artefact site	313952	6411900	Collection	Completed 2012
37-3-1351	REA353	Stone artefact site	314001	6411801	Collection	Completed 2012
37-3-1352	REA354	Stone artefact site	313943	6411764	Collection	Completed 2012
37-3-1353	REA355	Stone artefact site	314015	6411728	Collection	Completed 2012



AHIMS #	Site Name	Site type	(MGA) E	(MGA) N	Management	Status
37-3-1354	REA356	Stone artefact site	313949	6411699	Collection	Completed 2012
37-3-1355	REA357	Stone artefact site	314297	6411681	Fencing	Completed 2012
37-3-1356	REA358	Stone artefact site	313943	6411620	Collection	Completed 2012
37-3-1365	REA359	Stone artefact site	313931	6411543	Collection	Completed 2012
37-3-1364	REA360	Stone artefact site	313960	6411510	Collection	Completed 2012
37-3-1363	REA361	Stone artefact site	314093	6411404	Collection	Completed 2012
37-3-1362	REA362	Stone artefact site	314149	6410746	Collection	Completed 2012
37-3-1361	REA363	Stone artefact site	314284	6410358	Collection	Completed 2012
37-3-1360	REA364	Stone artefact site	314391	6410328	Fencing	Completed 2012
37-3-1359	REA365 and REA366	Stone artefact site	314360	6410281	Fencing	Completed 2012
37-3-1299	REA367	Stone artefact site	312745	6409648	Collection	Completed 2012
37-3-1358	REA368	Stone artefact site	312680	6409611	Collection	Completed 2012
37-3-1357	REA369 and REA370	Stone artefact site	312896	6409588	Collection	Completed 2012
37-2-4885	REA371	Stone artefact site	313440	6409336	Collection	Completed 2012
37-3-1298	REA372	Stone artefact site	312485	6409259	Collection	Completed 2012
TBA	REA373	Stone artefact site	314283	6409127	Collection	Completed 2012
37-2-4881	REA374	Stone artefact site	312062	6409062	Collection	Completed 2012
37-2-4882	REA375	Stone artefact site	311484	6408742	Collection	Interim Fencing 2012
37-3-1294	REA376	Stone artefact site	312561	6408273	Collection	Interim Fencing 2012
TBA	REA377	Stone artefact site	314084	6408070	Collection	Completed 2012
37-3-1297	REA378	Stone artefact site	318134	6406942	Collection	Completed 2012
37-3-1296	REA379	Stone artefact site	317976	6406781	Collection	Completed 2012
37-3-1295	REA380	Stone artefact site	313603	6406339	Collection	Interim Fencing 2012
37-3-1293	REA381	Stone artefact site	313545	6406283	Collection	Interim Fencing 2012
37-3-1292	REA382	Stone artefact site	313350	6406240	Collection	Interim Fencing 2012
37-3-1291	REA383	Stone artefact site	313399	6406240	Collection	Interim Fencing 2012
37-3-1287	REA384	Stone artefact site	313675	6406251	Collection	Interim Fencing 2012

AHIMS #	Site Name	Site type	(MGA) E	(MGA) N	Management	Status
37-3-1288	REA385	Stone artefact site	313392	6406131	Collection	Interim Fencing 2012
37-3-1289	REA386	Stone artefact site	313616	6406165	Collection	Interim Fencing 2012
37-3-1290	REA387	Stone artefact site	312949	6405409	Fencing	Completed 2012
37-3-1279	REA388	Stone artefact site	313242	6405250	Collection	Completed 2012
37-3-1280	REA389	Stone artefact site	316781	6405233	Collection	Completed 2012
37-3-1281	REA390	Stone artefact site	316899	6405251	Collection	Completed 2012
TBA	REA391	Stone artefact site	316868	6405210	Collection	Completed 2012
37-3-1282	REA392	Stone artefact site	315226	6404465	Collection	Completed 2012
37-3-1283	REA393	Stone artefact site	315193	6404475	Collection	Completed 2012
TBA	REA393a	Stone artefact site	314448	6409011	Collection	Completed 2012
37-3-1284	REA394	Stone artefact site	317569	6407558	Partial collection/ Fencing	Completed 2012
37-3-1285	REA395	Stone artefact site	317655	6407434	Collection	Completed 2012
37-3-1286	REA396	Stone artefact site	312238	6406335	Collection	Completed 2012
37-3-1278	REA397	Stone artefact site	312817	6405876	Collection	Interim Fencing 2012
TBA	REA398	Stone artefact site	312788	6405830	Collection	Completed 2012
37-3-1276	REA401	Stone artefact site	312957	6405612	Collection	Completed 2012
37-3-1275	REA402	Stone artefact site	313162	6405151	Fencing	Completed 2012
37-3-1274	REA403	Stone artefact site	313114	6405130	Fencing	Completed 2012
37-3-1273	REA404	Stone artefact site	313126	6405100	Fencing	Completed 2012
37-3-1272	REA405	Stone artefact site	316432	6404711	Collection	Completed 2012
37-2-4879	REA406	Stone artefact site	316449	6404654	Fencing	Completed 2012
37-3-1271	REA407	Stone artefact site	311591	6411362	Collection	Completed 2012
37-3-1277	REA408	Stone artefact site	314162	6410824	Fencing	Completed 2012
37-3-1270	REA412	Stone artefact site	313709	6409989	Collection	Completed 2012
37-3-1269	REA413	Stone artefact site	313534	6409435	Collection	Completed 2012
37-3-1268	REA414	Stone artefact site	312545	6408973	Collection	Completed 2012
37-3-1267	REA415 Oaklands	Stone artefact site	313786	6405010	Excavation	Completed 2012
37-3-1266	REA416	Stone artefact site	314452	6409642	Collection	Completed 2012

AHIMS #	Site Name	Site type	(MGA) E	(MGA) N	Management	Status
37-3-1265	REA416a	Stone artefact site	312977	6409869	Collection	Completed 2012
37-2-4878	REA417	Stone artefact site	311759	6410840	Collection	Completed 2012
37-2-4419	REA418	Scarred tree	314120	6409577	Collection	Moved to REA86 2012
37-2-4877	REA419	Stone artefact site	311742	6407285	Collection	Completed 2012
37-3-1264	REA420	Stone artefact site	312116	6411235	Fencing	Completed 2012
37-3-1263	REA423	Stone artefact site	317276	6405840	Fencing	Completed 2012
37-3-1262	REA424	Stone artefact site	314562	6409238	Collection	Completed 2012
37-2-4876	REA425	Stone artefact site	310413	6412522	Collection	Completed 2012
37-3-1261	REA426	Stone artefact site	314004	6412647	Partial collection/ Fencing	Completed 2012
37-3-1260	REA427	Stone artefact site	313516	6406055	Collection	Interim Fencing 2012
TBA	REA428	Stone artefact site	317656	6411932	Collection	Completed 2012
37-3-1259	REA429	Stone artefact site	317548	6406193	Collection	Completed 2012
37-2-4875	REA430	Stone artefact site	312099	6406435	Collection	Completed 2012
37-3-1258	REA431	Stone artefact site	313453	6406169	Collection	Interim Fencing 2012
37-3-1257	REA432	Stone artefact site	317222	6405811	Fencing	Completed 2012
37-2-4874	REA433	Stone artefact site	311734	6407117	Collection	Interim Fencing 2012
37-3-1256	REA434	Stone artefact site	316469	6404600	Fencing	Completed 2012
37-3-1255	REA435	Stone artefact site	314373.19	6409358	Collection	Completed 2012
TBA	REA436	Stone artefact site	311717.56	6410072	Collection	Completed 2012
37-3-1253	REA438	Stone artefact site	317003	6410688	Fencing	Completed 2012
37-3-1252	REA439	Stone artefact site	315891	6412396	Excavation	Completed 2012
37-3-1250	REA440	Stone artefact site	312908	6411474	Fencing	Completed 2012
37-3-1249	REA441	Isolated find	312843	6411289	Fencing	Completed 2012
37-2-4873	REA442	Stone artefact site	311894	6411281	Fencing	Completed 2012
37-3-1248	REA443	Stone artefact site	317598	6409776	Excavation	Completed 2012
37-3-1225	REA444	Stone artefact site	317718	6409098	Excavation	Completed 2012
37-3-1224	REA445	Stone artefact site	316533	6411702	Excavation	Completed 2012

AHIMS #	Site Name	Site type	(MGA) E	(MGA) N	Management	Status
37-3-1223	REA446	Stone artefact site	316985	6411217	Excavation	Completed 2012
37-3-1222	REA447	Stone artefact site	314487	6409690	Excavation	Completed 2012
37-3-1220	RSA2	Isolated find	312589	6413358	Collection	Completed 2012
37-3-0920	RUM-OS1	Stone artefact site	317298	6408018	Fencing	Completed 2012
37-3-0774	RW001 (IF) Camberwell	Isolated find	313954	6407290	Collection	Completed 2012
37-2-2709	RW002	Stone artefact site	313654	6407789	Collection	Completed 2012
37-3-0775	RW003 (Camberwell)	Stone artefact site	313554	6407739	Collection	Completed 2012
37-2-2710	RW013 (Jerry's Plains)	Stone artefact site	311304	6407089	Fencing	Completed 2012
37-2-2711	RW014 (Jerry's Plains)	Stone artefact site	311404	6407139	Collection	Interim Fencing 2012
37-2-2712	RW015 (Jerry's Plains)	Stone artefact site	311704	6407090	Collection	Completed 2012
37-2-2713	RW030 (Jerry's Plains)	Stone artefact site	311154	6407390	Collection	Interim Fencing 2012
37-2-2714	RW031 (Jerry's Plains)	Stone artefact site	311104	6407390	Collection	Interim Fencing 2012
37-2-2715	RW032	Stone artefact site	311204	6407139	Fencing	Completed 2012
37-2-2716	RW033 (Jerry's Plains)	Stone artefact site	311804	6407640	Collection	Interim Fencing 2012
37-2-2717	RW034 (Jerry's Plains)	Stone artefact site	311504	6407990	Collection	Interim Fencing 2012
37-2-2718	RW035 (Jerry's Plains)	Isolated find	311304	6408240	Collection	Completed 2012
37-2-2719	RW037 (Jerry Plains)	Stone artefact site	311204	6407390	Collection	Interim Fencing 2012
37-3-0777	RW041 (Camberwell)	Stone artefact site	312804	6408639	Excavation	To be completed 2014
37-3-0778	RW042 (Camberwell)	Stone artefact site	312704	6408989	Collection	Completed 2012
37-3-0779	RW043 (IF)	Isolated find	312254	6409089	Collection	Completed 2012
37-2-2720	RW044 (IF)	Isolated find	311748	6408916	Collection	Completed 2012
37-3-0780	RW045 (IF)	Isolated find	312488	6408333	Collection	Interim Fencing 2012
37-3-0781	RW046 (Camberwell)	Stone artefact site	313506	6404197	Fencing	Completed 2012
37-3-0782	RW047 (Camberwell)	Stone artefact site	313604	6404639	Fencing	Completed 2012
37-3-0783	RW048 (Camberwell)	Stone artefact site	313654	6404639	Fencing	Completed 2012
37-3-0784	RW049 (Camberwell)	Stone artefact site	313222	6405069	Fencing	Completed 2012



AHIMS #	Site Name	Site type	(MGA) E	(MGA) N	Management	Status
37-3-1218	RW051	Stone artefact site	312661	6405367	Fencing	Completed 2012
37-3-0787	RW052 (Camberwell)	Stone artefact site	312354	6406039	Fencing	Completed 2012
37-3-0788	RW053 (IF)	Isolated find	312387	6406089	Fencing	Completed 2012
37-3-0789	RW054 (Camberwell)	Stone artefact site	312207	6406278	Fencing	Completed 2012
37-3-0790	RW055 (Camberwell)	Stone artefact site	313049	6406220	Collection	Interim Fencing 2012
37-3-0791	RW056 (Camberwell)	Stone artefact site	313064	6406089	Collection	Interim Fencing 2012
37-3-0792	RW057 (Camberwell)	Stone artefact site	312919	6406301	Collection	Completed 2012
37-3-0793	RW058 (Camberwell)	Stone artefact site	313480	6403870	Fencing	Completed 2012
37-2-2721	RW060 (Jerry's Plains)	Stone artefact site	311155	6407188	Fencing	Completed 2012
37-3-0193	Telecom site 5;	Stone artefact site	316105	6411689	Fencing	Completed 2012
37-2-2007	WPE 01	Stone artefact site	310951	6407182	Destroyed under Permit	Completed 2012
37-2-2010	WPE 04	Stone artefact site	311165	6408732	Destroyed under Permit	Completed 2012
37-2-2014	WPE 08	Stone artefact site	311257	6409531	Destroyed under Permit	Completed 2012
37-2-2016	WPE 09	Stone artefact site	311147	6408621	Destroyed under Permit	Completed 2012
37-2-2017	WPE 10	Stone artefact site	311166	6408856	Destroyed under Permit	Completed 2012

## Appendix B - Aboriginal Consultation for 2014 ACHMP

Results of the OzArk 2014 salvage program are listed below.

Item #	AHIMS #	Site Name	GDA Zone; 56	# artefacts originally recorded	# artefacts recovered 2014
1	37-2-0804	CUM-40	311304E; 6407290N	1	0
2	37-2-2712	RW15 (Jerry Plains)	311704E; 6407090N	2	0
3	37-2-2716	RW33	311804E; 6407640N	2	0
4	37-2-2717	RW34	311504E; 6407990N	5	1
5	37-2-2719	RW37	311204E; 6407390N	11	0
6	37-2-3958	REA129	311380E; 6408078N	1	0
7	37-2-3959	REA130	311506E; 6407915N	2	4
8	37-2-3960	REA134	311732E; 6407771N	24	32
9	37-2-3961	REA135	311770R 6407603N	1	3
10	37-2-3963	REA137	311859E; 6407511N	1	1
11	37-2-4868	RAV Nth OS-2	311362E; 6410550N	9	18
12	37-2-4869	RAV Nth IF-1	311375E; 6410473N	1	1
13	37-2-4875	REA433	311734E; 6407117N	2	2
14	37-2-4882	REA375	311484E; 6408742N	1	20
15	37-3-0185	N 12;	313714E; 6405790N	3	1
16	37-3-0186	N 13	313704E; 6406050N	3	0
17	37-3-0484	CK15	312723E; 6408732N	13	20
18	37-3-0777	RW41	312804E; 6408639N	14	5
19	37-3-0780	RW45	312488E; 6408333N	2	0
20	37-3-0790	RW55 (Camberwell)	313049E; 6406220N	3	1
21	37-3-0791	RW56 (Camberwell)	313162E; 6406221N	2	2
22	37-3-1006	REA125	312436E; 6408537N	1	2
23	37-3-1008	REA127	312939E; 6408571N	1	1
24	37-3-1022	REA150	313421E; 6406304N	1	3
25	37-3-1023	REA151	313518E; 6406232N	2	0
26	37-3-1024	REA152	313397E; 6406193N	1	0

Item #	AHIMS #	Site Name	GDA Zone; 56	# artefacts originally recorded	# artefacts recovered 2014
27	37-3-1025	REA153	313469E; 6406153N	1	0
28	37-3-1026	REA154	313539E; 6406138N	3	5
29	37-3-1027	REA155	313655E; 6406116N	3	0
30	37-3-1028	REA156	313706E; 6406042N	4	2
31	37-3-1029	REA157	313452E; 6406046N	1	6
32	37-3-1030	REA158	313634E; 6405953N	31	73
33	37-3-1031	REA159	313649E; 6406040N	4	3
34	37-3-1032	REA160	313477E; 6406108N	20	3
35	37-3-1033	REA161	313781E; 6405886N	14	0
36	37-3-1036	REA164	312846E; 6405982N	2	2
37	37-3-1038	REA166	313360E; 6405885N	5	27
38	37-3-1039	REA167	313545E; 6405891N	2	17
39	37-3-1041	REA169	313594E; 6405770N	1	5
40	37-3-1043	REA171	313006E; 6405722N	5	0
41	37-3-1044	REA172	313363E; 6405723N	1	0
42	37-3-1045	REA173	313572E; 6405685N	6	13
43	37-3-1051	REA179	313495E; 6405612N	5	17
44	37-3-1052	REA180	313411E; 6405562N	1	8
45	37-3-1058	REA186	313424E; 6405407N	1	7
46	37-3-1061	REA189	313438E; 6405367N	1	2
47	37-3-1094	REA222	314270E; 6404447N	301	94
48	37-3-1108	REA236	313982E; 6404143N	589	117
49	37-3-1207	RBH-IF1	313972E; 6407174N	1	1
50	37-3-1217	RAV Nth OS-1	312982E; 6405667N	11	11
51	37-3-1235	REA273	313442E; 6407601N	1	0
52	37-3-1258	REA431	313453E; 6406169N	1	0
53	37-3-1260	REA427	313516E; 6406055N	1	0
54	37-3-1262	REA424	314565E; 6409240N	35	1
55	37-3-1278	REA397	312817E; 6405876N	1	1
56	37-3-1287	REA384	313675E; 6406251N	36	3

Item #	AHIMS #	Site Name	GDA Zone; 56	# artefacts originally recorded	# artefacts recovered 2014
57	37-3-1288	REA385	313392E; 6406131N	1	1
58	37-3-1289	REA386	313616E; 6406165N	1	0
59	37-3-1291	REA383	313399E; 6406240N	1	0
60	37-3-1292	REA382	313350E; 6406240N	1	1
61	37-3-1293	REA381	313545E; 6406283N	1	1
62	37-3-1294	REA376	312561E; 6408273N	1	0
63	37-3-1295	REA380	313603E; 6406339N	152	21
64	37-3-1307	REA312	313696E; 6405817N	1	1
65	37-3-1308	REA313	313641E; 6405786N	1	1
66	37-3-1309	REA309	313433E; 6405952N	10	4
67	37-3-1313	REA311	313334E; 6405807N	6	4
68	37-3-1314	REA310	313304E; 6405871N	1	4
69	37-3-1315	REA315	313406E; 6405732N	1	1
70	37-3-1318	REA318	312998E; 6405714N	45	10
71	37-3-1319	REA319	313076E; 6405724N	1	1
72	37-3-1320	REA320	313101E; 6405686N	1	1
73	37-3-1321	REA314	313646E; 6405748N	20	5
74	37-3-1322	REA321	313385E; 6405659N	3	2
75	37-3-1323	REA322	313520E; 6405642N	3	3
76	37-3-1327	REA326	313407E; 6405589N	21	6
77	37-3-1328	REA327	313471E; 6405566N	1	1
78	37-3-1329	REA328	313591E; 6405573N	31	25
79	37-3-1330	REA329	313471E; 6405525N	1	0
80	37-3-1331	REA331	313579E; 6405412N	1	1
81	37-3-1332	REA332	313635E; 6405379N	15	3
82	37-3-1366	RAV Nth OS-3	313701E; 6404998N	2	2
83	37-3-1367	RAV Nth OS-4	313961E; 6404850N	54	56



## Appendix C - New Sites

AHIMS #	Site Name	Site Type	(MGA) E	(MGA) N	Management	Notes
37-3-1505	RNOA IF1	Stone Artefact Site	313974	6409819	To be fenced in 2018	Identified during 2018 annual site monitoring program
37-3-1504	RNOA IF2	Stone Artefact Site	313607	6410401	To be fenced in 2018	Identified during 2018 annual site monitoring program
37-2-4547	Hillcrest 4	Stone Artefact Site	311269	6419552	Site located on secured Project Offset Area	Identified in Ozark (2018) and Tocomwall (2017)
37-2-4548	Hillcrest 5	Stone Artefact Site	311245	6419595	Site located on secured Project Offset Area	Identified in Ozark (2018) and Tocomwall (2017)
37-2-4549	Hillcrest 6	Stone Artefact Site	311170	6419646	Site located on secured Project Offset Area	Identified in Ozark (2018) and Tocomwall (2017)
37-2-5525	HCR002IF	Stone Artefact Site	310768	6419501	Site located on secured Project Offset Area	Identified in Ozark (2018) and Tocomwall (2017)
37-2-5526	HCR003AS	Stone Artefact Site	310924	6419596	Site located on secured Project Offset Area	Identified in Ozark (2018) and Tocomwall (2017)
37-2-5527	HCR004AS	Stone Artefact Site	310934	6419751	Site located on secured Project Offset Area	Identified in Ozark (2018) and Tocomwall (2017)
37-2-5529	HCR075AS	Stone Artefact Site	310732	6419834	Site located on secured Project Offset Area	Identified in Ozark (2018) and Tocomwall (2017)
37-2-5532	HCR077IF	Stone Artefact Site	310862	6419832	Site located on secured Project Offset Area	Identified in Ozark (2018) and Tocomwall (2017)
37-2-5533	HCR076IF	Stone Artefact Site	310842	6419819	Site located on secured Project Offset Area	Identified in Ozark (2018) and Tocomwall (2017)
37-2-5534	HCR079IF	Stone Artefact Site	310843	6420056	Site located on secured	Identified in Ozark (2018) and Tocomwall (2017)

AHIMS #	Site Name	Site Type	(MGA) E	(MGA) N	Management	Notes
					Project Offset Area	
37-2-5535	HCR078IF	Stone Artefact Site	310845	6420055	Site located on secured Project Offset Area	Identified in Ozark (2018) and Tocomwall (2017)
37-2-5536	HCR082IF	Stone Artefact Site	310864	6420084	Site located on secured Project Offset Area	Identified in Ozark (2018) and Tocomwall (2017)
37-2-5537	HCR083IF	Stone Artefact Site	310830	6420074	Site located on secured Project Offset Area	Identified in Ozark (2018) and Tocomwall (2017)
37-2-5538	HCR084AS	Stone Artefact Site	310802	6420044	Site located on secured Project Offset Area	Identified in Ozark (2018) and Tocomwall (2017)
37-2-5539	HCR085AS	Stone Artefact Site	310781	6420004	Site located on secured Project Offset Area	Identified in Ozark (2018) and Tocomwall (2017)
37-2-5540	HCR086IF	Stone Artefact Site	310771	6420041	Site located on secured Project Offset Area	Identified in Ozark (2018) and Tocomwall (2017)
37-2-5541	HCR087IF	Stone Artefact Site	310660	6420034	Site located on secured Project Offset Area	Identified in Ozark (2018) and Tocomwall (2017)
37-2-5542	HCR088IF	Stone Artefact Site	310653	6420038	Site located on secured Project Offset Area	Identified in Ozark (2018) and Tocomwall (2017)
37-2-5543	HCR089IF	Stone Artefact Site	310651	6420039	Site located on secured Project Offset Area	Identified in Ozark (2018) and Tocomwall (2017)
37-2-5544	HCR081IF	Stone Artefact Site	310842	6420075	Site located on secured Project Offset Area	Identified in Ozark (2018) and Tocomwall (2017)
37-2-5545	HCR080IF	Stone Artefact Site	310839	6420076	Site located on secured Project Offset Area	Identified in Ozark (2018) and Tocomwall (2017)

<b>AHIMS #</b>	<b>Site Name</b>	<b>Site Type</b>	<b>(MGA) E</b>	<b>(MGA) N</b>	<b>Management</b>	<b>Notes</b>
37-2-5546	HCR112IF	Stone Artefact Site	311895	6419025	Site located on secured Project Offset Area	Identified in Ozark (2018) and Tocomwall (2017)
37-2-5547	HCR113AS	Stone Artefact Site	311878	6419009	Site located on secured Project Offset Area	Identified in Ozark (2018) and Tocomwall (2017)
37-2-5548	HRC114AS	Stone Artefact Site	311814	6418947	Site located on secured Project Offset Area	Identified in Ozark (2018) and Tocomwall (2017)
37-2-5549	HCR115IF	Stone Artefact Site	311525	6419505	Site located on secured Project Offset Area	Identified in Ozark (2018) and Tocomwall (2017)
37-2-5550	HCR0116AS	Stone Artefact Site	311620	6419817	Site located on secured Project Offset Area	Identified in Ozark (2018) and Tocomwall (2017)
37-2-5551	HRC0117IF	Stone Artefact Site	311642	6419958	Site located on secured Project Offset Area	Identified in Ozark (2018) and Tocomwall (2017)
37-2-5552	HCR0118AS	Stone Artefact Site	311637	6419979	Site located on secured Project Offset Area	Identified in Ozark (2018) and Tocomwall (2017)
37-2-5555	HCR0119IF	Stone Artefact Site	311593	6420010	Site located on secured Project Offset Area	Identified in Ozark (2018) and Tocomwall (2017)
37-2-5559	HCR0125IF	Stone Artefact Site	311593	6420013	Site located on secured Project Offset Area	Identified in Ozark (2018) and Tocomwall (2017)
37-2-5560	HCR0126IF	Stone Artefact Site	311579	6420005	Site located on secured Project Offset Area	Identified in Ozark (2018) and Tocomwall (2017)
37-2-5561	HCR0127IF	Stone Artefact Site	311580	6420002	Site located on secured Project Offset Area	Identified in Ozark (2018) and Tocomwall (2017)
37-2-5571	Hillcrest 16	Stone Artefact Site	310626	6420362	Site located on secured Project Offset Area	Identified in Ozark (2018) and Tocomwall (2017)

<b>AHIMS #</b>	<b>Site Name</b>	<b>Site Type</b>	<b>(MGA) E</b>	<b>(MGA) N</b>	<b>Management</b>	<b>Notes</b>
37-2-5572	Hillcrest 17	Stone Artefact Site	311006	6420438	Site located on secured Project Offset Area	Identified in Ozark (2018) and Tocomwall (2017)
37-2-5573	Hillcrest 18	Stone Artefact Site	311300	6420484	Site located on secured Project Offset Area	Identified in Ozark (2018) and Tocomwall (2017)
37-2-5575	Hillcrest 20	Stone Artefact Site	311293	6420030	Site located on secured Project Offset Area	Identified in Ozark (2018) and Tocomwall (2017)
37-2-5576	Hillcrest 21	Stone Artefact Site	310856	6420000	Site located on secured Project Offset Area	Identified in Ozark (2018) and Tocomwall (2017)
37-2-5577	Hillcrest 22	Stone Artefact Site	311655	6419822	Site located on secured Project Offset Area	Identified in Ozark (2018) and Tocomwall (2017)
37-3-1422	HCR015IF	Stone Artefact Site	312332	6420241	Site located on secured Project Offset Area	Identified in Ozark (2018) and Tocomwall (2017)
37-3-1423	HCR017IF	Stone Artefact Site	312464	6419715	Site located on secured Project Offset Area	Identified in Ozark (2018) and Tocomwall (2017)
37-3-1424	HCR016IF	Stone Artefact Site	312455	6419717	Site located on secured Project Offset Area	Identified in Ozark (2018) and Tocomwall (2017)
37-3-1425	HCR018IF	Stone Artefact Site	312486	6419515	Site located on secured Project Offset Area	Identified in Ozark (2018) and Tocomwall (2017)
37-3-1426	HCR019IF	Stone Artefact Site	312440	6419441	Site located on secured Project Offset Area	Identified in Ozark (2018) and Tocomwall (2017)
37-3-1427	HCR020IF	Stone Artefact Site	312439	6419438	Site located on secured Project Offset Area	Identified in Ozark (2018) and Tocomwall (2017)
37-3-1470	HCR101IF	Stone Artefact Site	312050	6419219	Site located on secured Project Offset Area	Identified in Ozark (2018) and Tocomwall (2017)



<b>AHIMS #</b>	<b>Site Name</b>	<b>Site Type</b>	<b>(MGA) E</b>	<b>(MGA) N</b>	<b>Management</b>	<b>Notes</b>
37-3-1471	HCR100IF	Stone Artefact Site	312043	6419260	Site located on secured Project Offset Area	Identified in Ozark (2018) and Tocomwall (2017)
37-3-1472	HCR102IF	Stone Artefact Site	312050	6419212	Site located on secured Project Offset Area	Identified in Ozark (2018) and Tocomwall (2017)
37-3-1473	HCR103IF	Stone Artefact Site	312053	6419198	Site located on secured Project Offset Area	Identified in Ozark (2018) and Tocomwall (2017)
37-3-1474	HCR104IF	Stone Artefact Site	312023	6419189	Site located on secured Project Offset Area	Identified in Ozark (2018) and Tocomwall (2017)
37-3-1475	HCR105IF	Stone Artefact Site	312004	6419166	Site located on secured Project Offset Area	Identified in Ozark (2018) and Tocomwall (2017)
37-3-1476	HCR021IF	Stone Artefact Site	312440	6419438	Site located on secured Project Offset Area	Identified in Ozark (2018) and Tocomwall (2017)
37-3-1477	HCR107IF	Stone Artefact Site	311966	6419113	Site located on secured Project Offset Area	Identified in Ozark (2018) and Tocomwall (2017)
37-3-1478	HCR106IF	Stone Artefact Site	311982	6419138	Site located on secured Project Offset Area	Identified in Ozark (2018) and Tocomwall (2017)
37-3-1479	HCR108IF	Stone Artefact Site	311967	6419112	Site located on secured Project Offset Area	Identified in Ozark (2018) and Tocomwall (2017)
37-3-1480	HCR109IF	Stone Artefact Site	311936	6419069	Site located on secured Project Offset Area	Identified in Ozark (2018) and Tocomwall (2017)
37-3-1481	HCR110IF	Stone Artefact Site	311936	6419069	Site located on secured Project Offset Area	Identified in Ozark (2018) and Tocomwall (2017)
37-3-1482	HCR111IF	Stone Artefact Site	311946	6419035	Site located on secured Project Offset Area	Identified in Ozark (2018) and Tocomwall (2017)

<b>AHIMS #</b>	<b>Site Name</b>	<b>Site Type</b>	<b>(MGA) E</b>	<b>(MGA) N</b>	<b>Management</b>	<b>Notes</b>
37-3-1486	HCR098IF	Stone Artefact Site	312030	6419420	Site located on secured Project Offset Area	Identified in Ozark (2018) and Tocomwall (2017)
37-3-1487	HCR099IF	Stone Artefact Site	312036	6419290	Site located on secured Project Offset Area	Identified in Ozark (2018) and Tocomwall (2017)
37-3-1488	HCR121AS	Stone Artefact Site	312439	6419438	Site located on secured Project Offset Area	Identified in Ozark (2018) and Tocomwall (2017)
37-3-1495	Hillcrest 23	Stone Artefact Site	311998	6419158	Site located on secured Project Offset Area	Identified in Ozark (2018) and Tocomwall (2017)
37-2-4515	Hillcrest 13	Stone Artefact Site	310480	6419947	Site located on secured Project Offset Area	Identified in Ozark (2018) and Tocomwall (2017)
37-2-5531	HCR072IF	Stone Artefact Site	310522	6419789	Site located on secured Project Offset Area	Identified in Ozark (2018) and Tocomwall (2017)
37-2-5556	HCR122IF	Stone Artefact Site	310840	6420171	Site located on secured Project Offset Area	Identified in Ozark (2018) and Tocomwall (2018)
37-2-5564	HCR0134AS	Stone Artefact Site	311154	6420196	Site located on secured Project Offset Area	Identified in Ozark (2018) and Tocomwall (2018)
37-2-5565	HCR0133AS	Stone Artefact Site	311258	6420242	Site located on secured Project Offset Area	Identified in Ozark (2018) and Tocomwall (2018)

## Appendix D - Consultation and Correspondence

Date	Stakeholder	Summary of Consultation	Ravensthorpe Contact
07/07/2016	OzArk	Reviewed ACHMP	Clint Weatherall (Ravensthorpe Operations)
29/07/2016	Ravensthorpe E&C	Reviewed ACHMP as part of Annual Review Submission	Clint Weatherall (Ravensthorpe Operations)
09/08/2016	All RAPs	Draft ACHMP sent to all Ravensthorpe RAPs for review and Comment. Two weeks to review and provide Comment.	Clint Weatherall (Ravensthorpe Operations)
25/08/2016	Ravensthorpe E&C, OzArk, RAPs	Discussion around Review and Comments for 2016 ACHMP review.	Clint Weatherall (Ravensthorpe Operations)
25/08/2016	All RAPs	Draft ACHMP resent to all RAPs for review following discussion after meeting on the 28/08/2016. No additional comments received by 12/09/2016.	Clint Weatherall (Ravensthorpe Operations)
14/07/2017	All RAPs	Draft ACHMP sent to all RAPs for review. No comments received.	Laura Barben
30/08/2017	OEH (Nicole Davis)	Draft ACHMP sent following RAP review period. Feedback received that no further changes required.	Laura Barben
06/09/2018	All RAPs	Draft ACHMP sent to all RAPs for review. No comments received.	Monique Pollock
21/09/2018	OEH (Nicole Davis)	Draft ACHMP sent following RAP review period. OEH feedback received 24/09/18, satisfied with modifications, no further comments or changes required.	Monique Pollock
10/09/2018	DPE	Secretary approval of management plan received	Sam Palmer
28/08/2019	All RAPs	Draft ACHMP sent to all RAPs for review. No additional comments were received.	Klay Marchant
23/09/2019	All RAPs	Draft ACHMP resent to all RAPs for review. No additional comments were received.	Klay Marchant
27/09/2019	DPIE and Heritage NSW	Updated ACHMP for review.	Klay Marchant
19/03/2020	DPIE and Heritage NSW	Updated ACHMP for review.	Klay Marchant

## Appendix E - Document Approval

APPENDIX INTENTIONALLY LEFT BLANK TO INCLUDE UPDATED LETTER OF APPROVAL