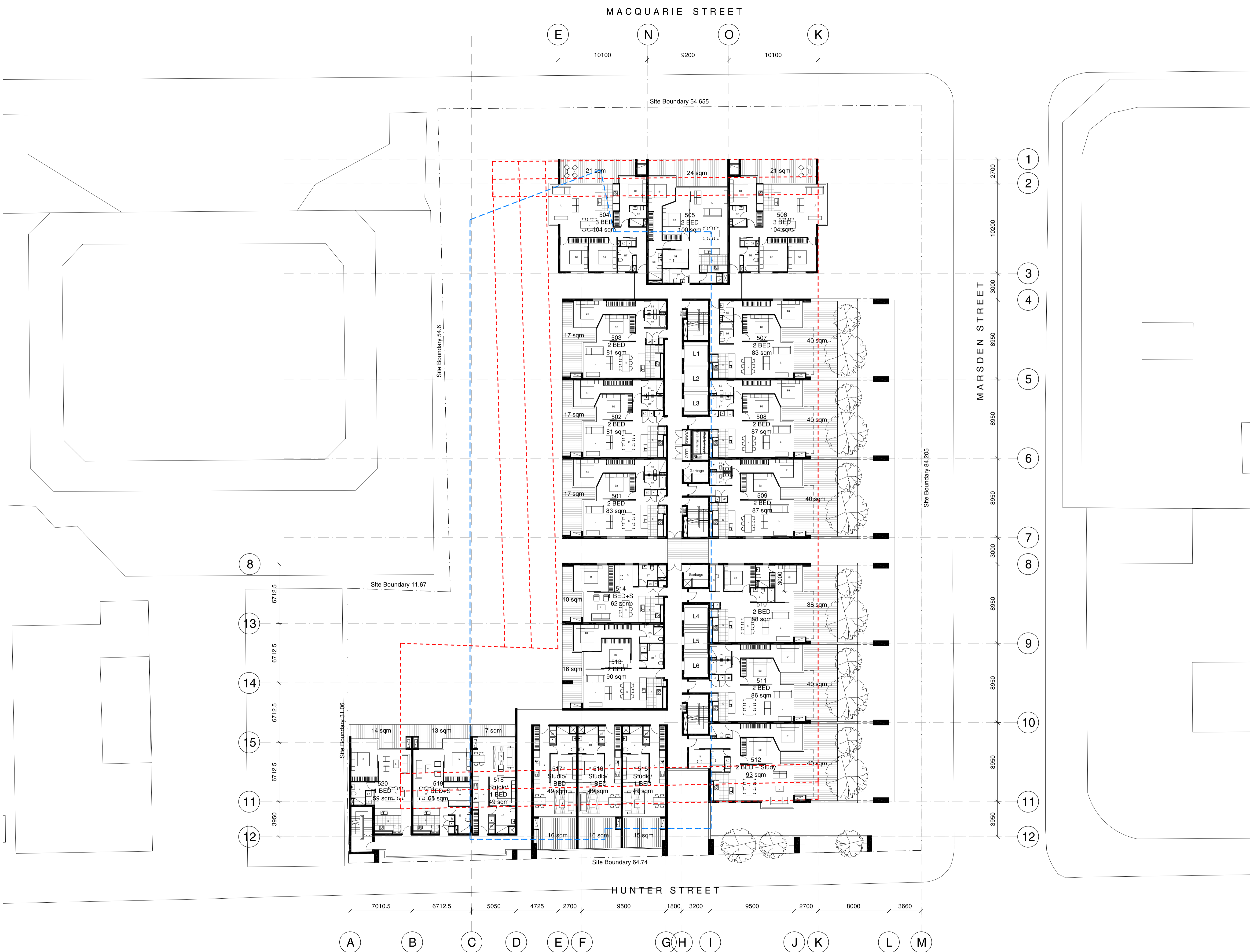


Check all dimensions and site conditions prior to commencement of any work, the purchase or ordering of any materials, fittings, plant, services or equipment and the preparation of shop drawings and/or the fabrication of any components.
 Do not scale drawings - refer to figured dimensions only. Any discrepancies shall immediately be referred to the architect for clarification.
 All drawings may not be reproduced or distributed without prior permission from the architect.



Revision	Date	Description	Initial	Checked
02	02/10/09	Consultant Issue for Review	AL	NM
01	23/09/09	Consultant Issue for Review	AL	NM

Client



Level 11, 68 Alfred Street, Milsoms Point, NSW 2061

Interiors



SYDNEY - SINGAPORE
 JAKARTA - MANILLA
 Architecture - Interiors - Project Managers
 Level 11, 68 Alfred Street, Milsoms Point, NSW 2061
 Ph: (02) 9922 5922
 Fax: (02) 9922 5977
 Email: josin@bigpond.com

Macquarie Place Parramatta

Level 05 Plan



Scale	1:200 @A1	Checked
Drawn	AL	
Project No.	S11174	
Status	PRELIMINARY	
Plot Date	16/12/2009 9:28:13 AM	
Plot File	S:\11100-11199\11174_cshg_parramatta\00_main\cad\plots\DA... ... EA2_12[02].dwg	
Drawing No.	[Revision]	

EA2.12[02]

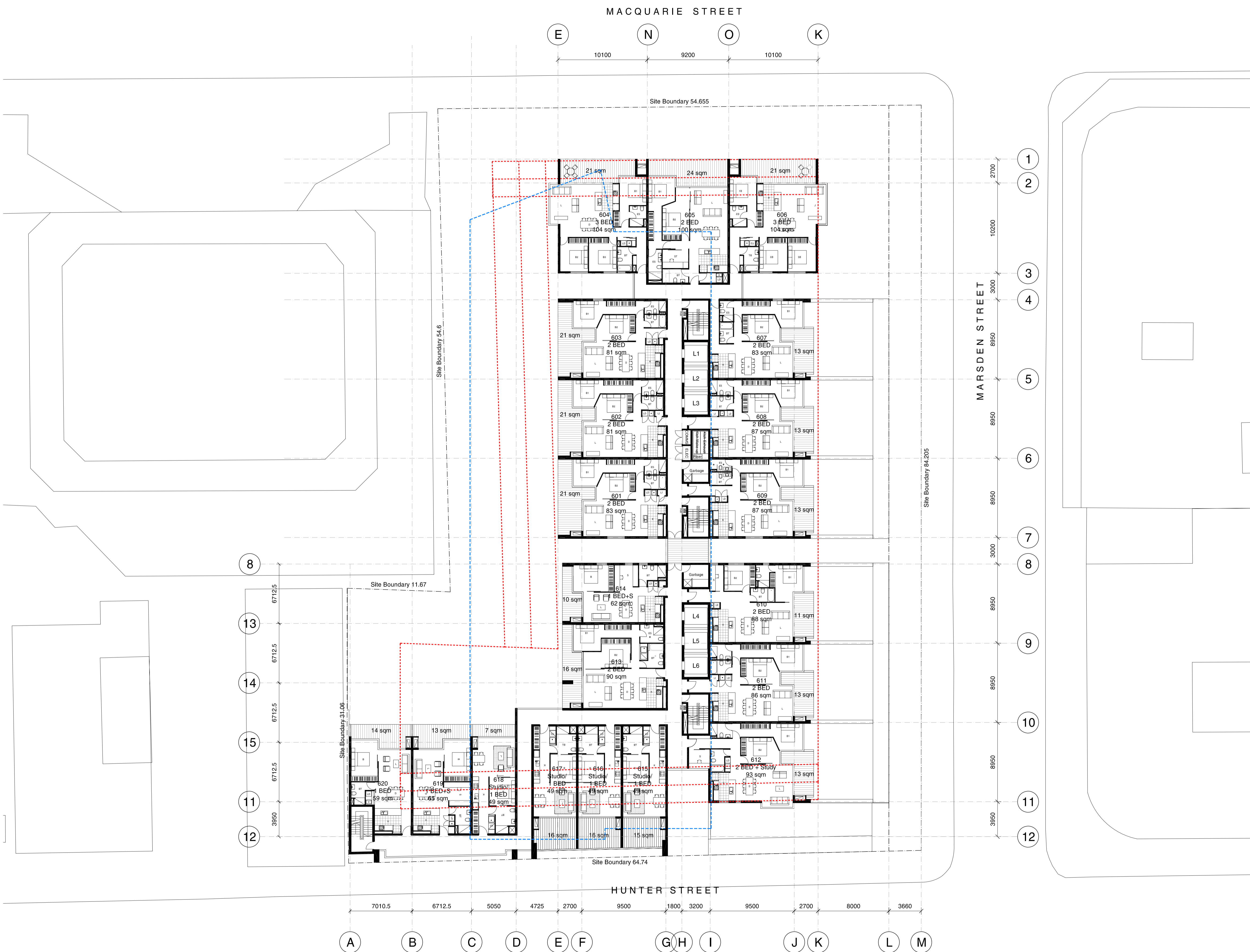
Sydney 1/243 Liverpool Street East Sydney NSW 2010 Australia
 T 02 8354 5100 F 02 8354 5199
 email syd@batesmart.com.au
 http://www.batesmart.com.au

Melbourne 1 Nicholson Street Melbourne VIC 3000 Australia
 T 03 8664 6200 F 03 8664 6300
 email melb@batesmart.com.au
 http://www.batesmart.com.au

Bates Smart Pty Ltd ABN 70 004 999 400



Check all dimensions and site conditions prior to commencement of any work, the purchase or ordering of any materials, fittings, plant, services or equipment and the preparation of shop drawings and/or the fabrication of any components.
 Do not scale drawings - refer to figured dimensions only. Any discrepancies shall immediately be referred to the architect for clarification.
 All drawings may not be reproduced or distributed without prior permission from the architect.



Revision	Date	Description	Initial	Checked
02	02/10/09	Consultant Issue for Review	AL	NM
01	23/09/09	Consultant Issue for Review	AL	NM

Client

Level 11, 68 Alfred Street, Milsons Point, NSW 2061

Interiors

SYDNEY - SINGAPORE
 JAKARTA - MANILLA
 Level 11, 68 Alfred Street, Milsons Point, NSW 2061
 Ph: (02) 9922 5922
 Fax: (02) 9922 5977
 Email: josin@bigpond.com

Macquarie Place Parramatta
 Level 06 Plan

Scale: 1:200 @A1

Drawn: AL Checked

Project No: S11174

Status: PRELIMINARY

Plot Date: 16/12/2009 9:28:18 AM

Plot File: S:\11100-11199\11174_cihg_parramatta\00_main\cad\plots\DA...
 ... EA2.13[02].dwg

Drawing No: [Revision]

EA2.13[02]

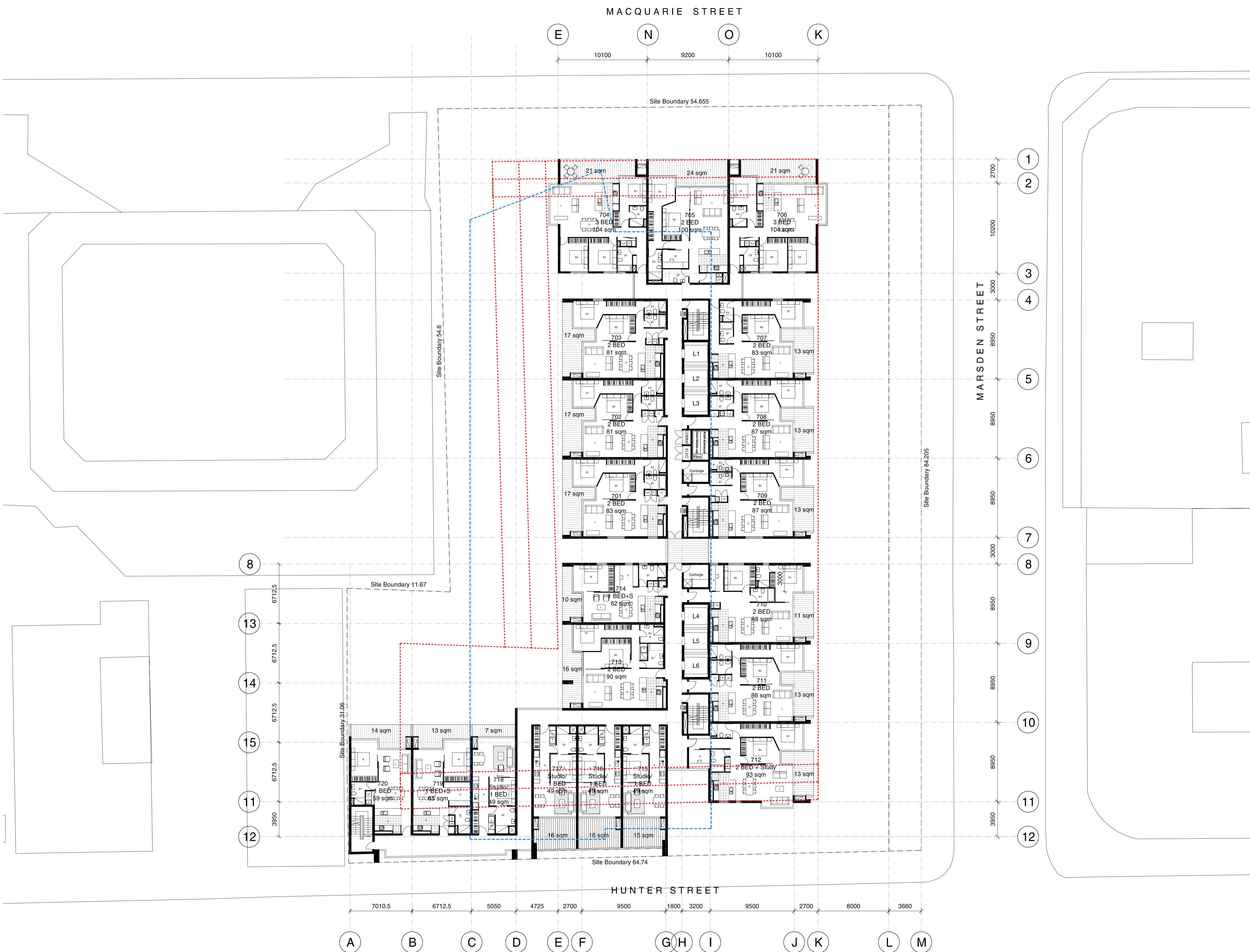
Sydney 1/243 Liverpool Street East Sydney NSW 2010 Australia
 T 02 8354 5100 F 02 8354 5199
 email syd@batesmart.com.au
 http://www.batesmart.com.au

Melbourne 1 Nicholson Street Melbourne VIC 3000 Australia
 T 03 8664 6200 F 03 8664 6300
 email melb@batesmart.com.au
 http://www.batesmart.com.au

Bates Smart Pty Ltd ABN 70 004 999 400



Check all dimensions and site conditions prior to commencement of any work, the purchase or ordering of any materials, fittings, plant, services or equipment and the preparation of shop drawings and/or the fabrication of any components.
 Do not scale drawings - refer to figured dimensions only. Any discrepancies shall immediately be referred to the architect for clarification.
 All drawings may not be reproduced or distributed without prior permission from the architect.



Revision	Date	Description	Initial	Checked
02	02/10/09	Consultant Issue for Review	AL	NM
01	23/09/09	Consultant Issue for Review	AL	NM

Client

Level 11, 68 Alfred Street, Milsons Point, NSW 2061

Interiors

SYDNEY - SINGAPORE
 JAKARTA - MANILLA
 Level 11, 68 Alfred Street, Milsons Point, NSW 2061
 Ph: (02) 9922 5922
 Fax: (02) 9922 5977
 Email: josin@bigpond.com

**Macquarie Place
 Parramatta**
 Level 07-09
 Plan

Scale: 1:200 @A1

Drawn: AL Checked

Project No.: S11174

Status: PRELIMINARY

Plot Date: 16/12/2009 9:28:24 AM

Plot File: S:\11100-11199\11174_cshg_parramatta\00_main\cadd\plots\DA...
 ... EA2_14[02].dwg

Drawing No.: [Revision]

EA2.14[02]

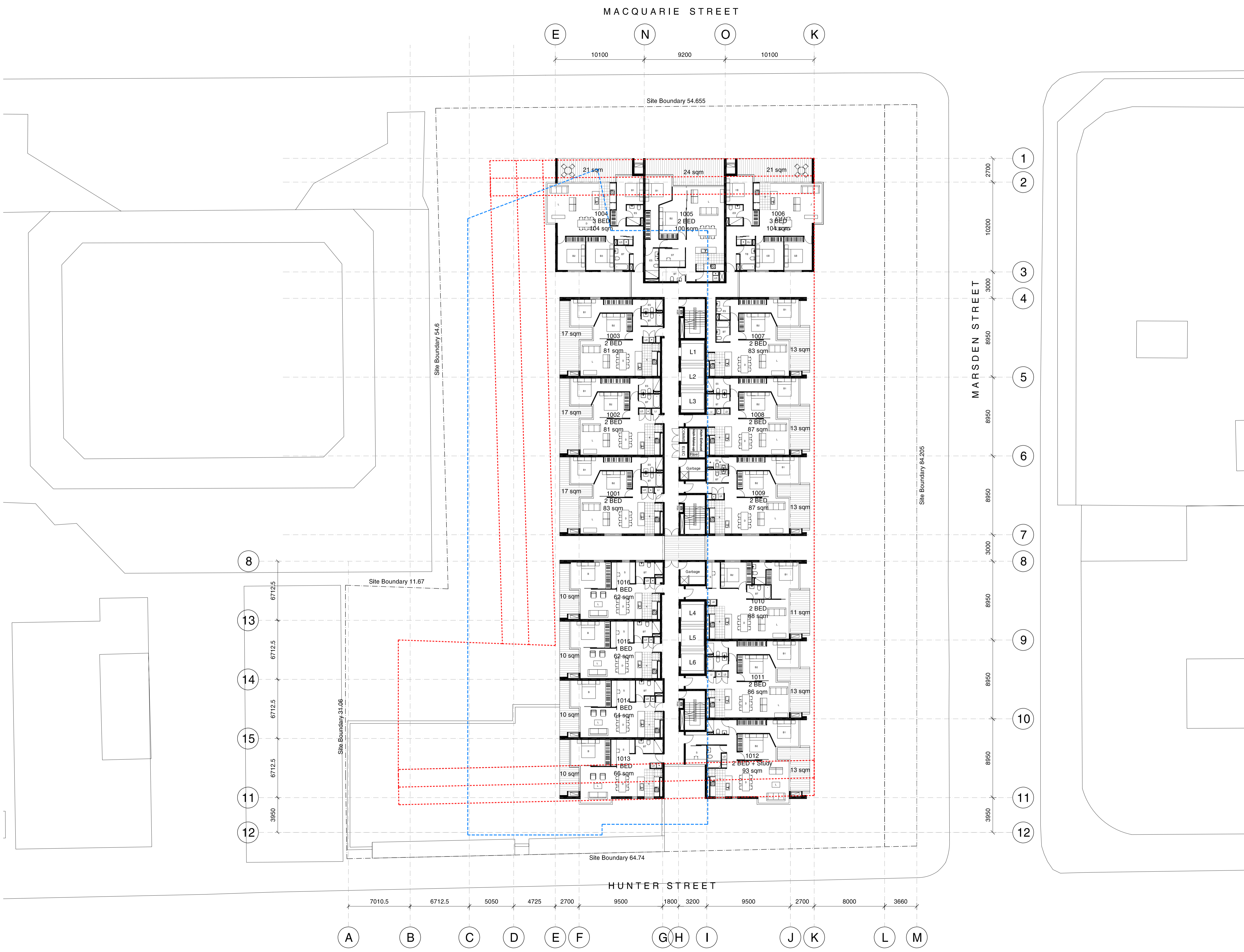
Sydney 1/243 Liverpool Street East Sydney NSW 2010 Australia
 T 02 8354 5100 F 02 8354 5199
 email syd@batesmart.com.au
 http://www.batesmart.com.au

Melbourne 1 Nicholson Street Melbourne VIC 3000 Australia
 T 03 8664 6200 F 03 8664 6300
 email melb@batesmart.com.au
 http://www.batesmart.com.au

Bates Smart Pty Ltd ABN 70 004 999 400



Check all dimensions and site conditions prior to commencement of any work, the purchase or ordering of any materials, fittings, plant, services or equipment and the preparation of shop drawings and/or the fabrication of any components.
 Do not scale drawings - refer to figured dimensions only. Any discrepancies shall immediately be referred to the architect for clarification.
 All drawings may not be reproduced or distributed without prior permission from the architect.



Revision Date	Description	Initial	Checked
02/10/09	Consultant Issue for Review	AL	NM
01/23/09/09	Consultant Issue for Review	AL	NM

Client



Level 11, 68 Alfred Street, Milsoms Point, NSW 2061

Interiors



SYDNEY - SINGAPORE
 JAKARTA - MANILLA
 Level 11, 68 Alfred Street
 Milsoms Point, NSW 2061
 Ph: (02) 9922 5922
 Fax: (02) 9922 5977
 Email: josin@bigpond.com

Macquarie Place Parramatta
Level 10 Plan

Scale	1:200 @A1	Checked
Drawn	AL	Checked
Project No.	S11174	
Status	PRELIMINARY	
Plot Date	16/12/2009 10:04:40 AM	
Plot File	S:\11100-11199\11174_cshg_parramatta\00_main\cadd\plots\DA... ... EA2_15[02].dwg	
Drawing No.	[Revision]	

EA2.15[02]

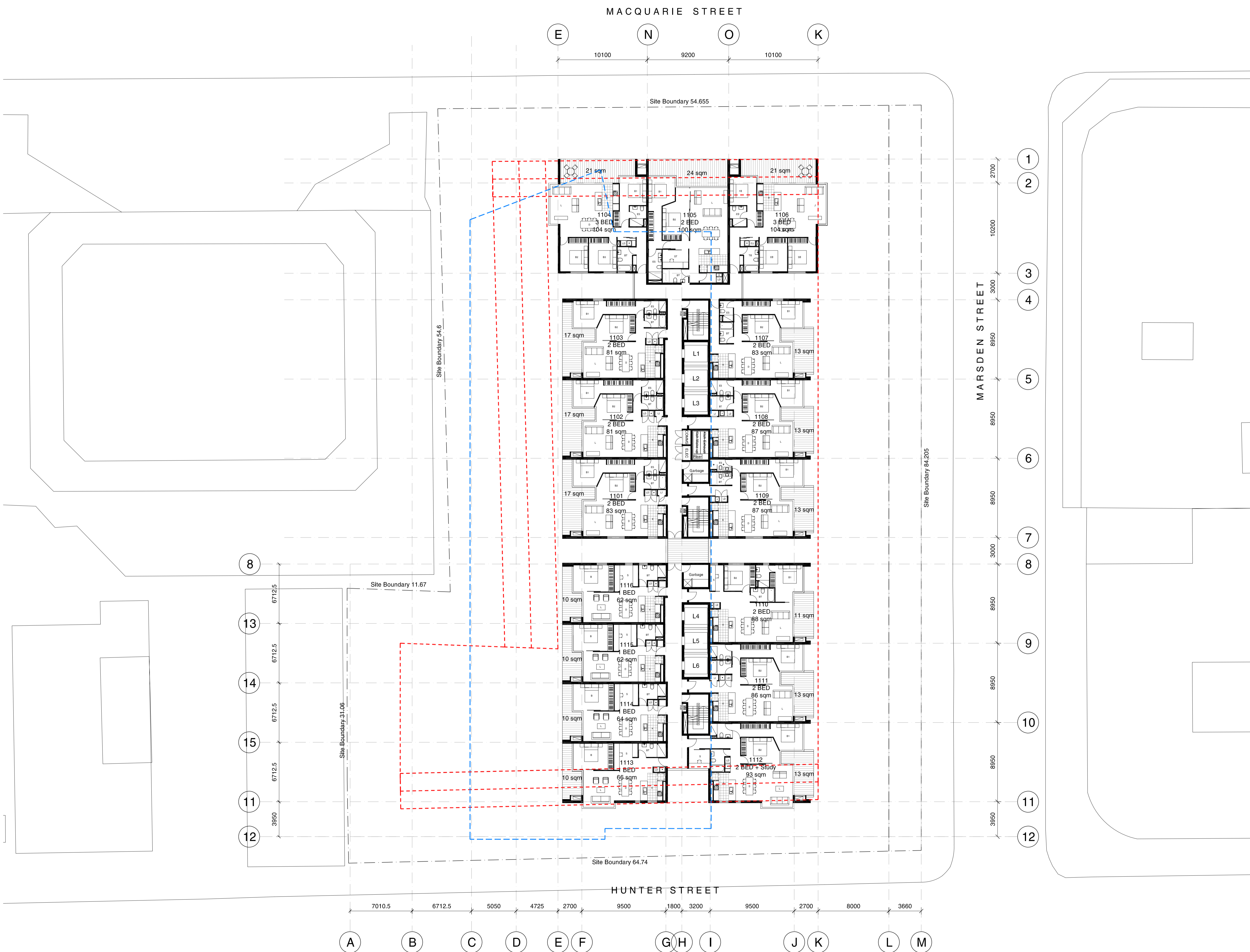
Sydney 1/243 Liverpool Street East Sydney NSW 2010 Australia
 T 02 8354 5100 F 02 8354 5199
 email syd@batesmart.com.au
 http://www.batesmart.com.au

Melbourne 1 Nicholson Street Melbourne VIC 3000 Australia
 T 03 8664 6200 F 03 8664 6300
 email melb@batesmart.com.au
 http://www.batesmart.com.au

Bates Smart Pty Ltd ABN 70 004 999 400



Check all dimensions and site conditions prior to commencement of any work, the purchase or ordering of any materials, fittings, plant, services or equipment and the preparation of shop drawings and/or the fabrication of any components.
 Do not scale drawings - refer to figured dimensions only. Any discrepancies shall immediately be referred to the architect for clarification.
 All drawings may not be reproduced or distributed without prior permission from the architect.



Revision	Date	Description	Initial	Checked
02	02/10/09	Consultant Issue for Review	AL	NM
01	23/09/09	Consultant Issue for Review	AL	NM

Client
 Level 11, 68 Alfred Street, Milsoms Point, NSW 2061

Interiors
 Level 11, 68 Alfred Street, Milsoms Point, NSW 2061
 Ph: (02) 9922 5922
 Fax: (02) 9922 5977
 Email: josin@bigpond.com

Macquarie Place Parramatta

Level 11-20 Plan

Scale	1:200 @A1	Checked
Drawn	AL	
Project No.	S11174	
Status	PRELIMINARY	
Plot Date	16/12/2009 9:28:36 AM	
Plot File	S:\11100-11199\11174_cshg_parramatta\00_main\cad\plots\DA... ... EA2.16[02].dwg	
Drawing No.	[Revision]	

EA2.16[02]

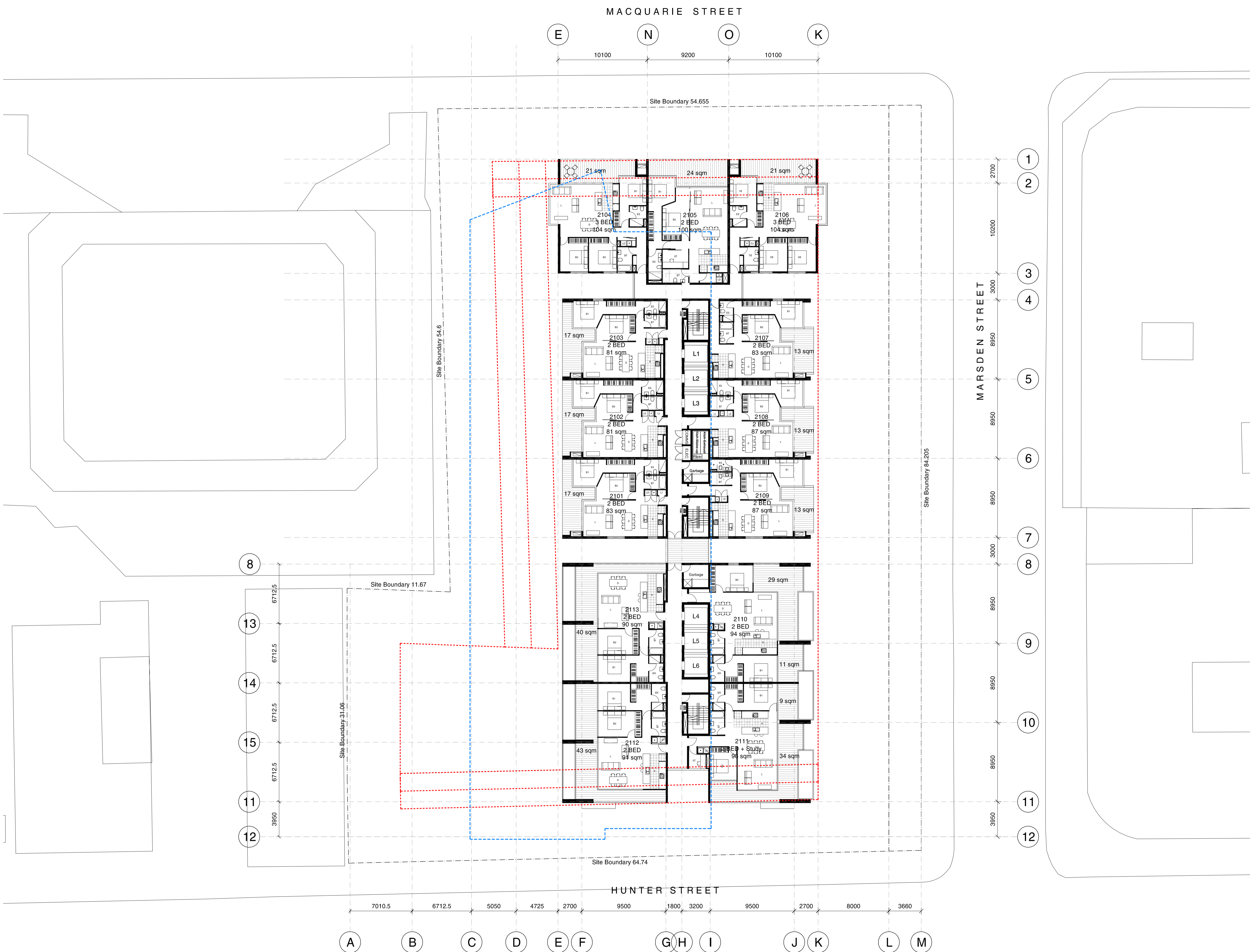
Sydney 1/243 Liverpool Street East Sydney NSW 2010 Australia
 T 02 8354 5100 F 02 8354 5199
 email syd@batesmart.com.au
 http://www.batesmart.com.au

Melbourne 1 Nicholson Street Melbourne VIC 3000 Australia
 T 03 8664 6200 F 03 8664 6300
 email melb@batesmart.com.au
 http://www.batesmart.com.au

Bates Smart Pty Ltd ABN 70 004 999 400



Check all dimensions and site conditions prior to commencement of any work, the purchase or ordering of any materials, fittings, plant, services or equipment and the preparation of shop drawings and/or the fabrication of any components.
 Do not scale drawings - refer to figured dimensions only. Any discrepancies shall immediately be referred to the architect for clarification.
 All drawings may not be reproduced or distributed without prior permission from the architect.



Revision	Date	Description	Initial	Checked
02	02/10/09	Consultant Issue for Review	AL	NM
01	23/09/09	Consultant Issue for Review	AL	NM

Client



Level 11, 68 Alfred Street, Milsions Point, NSW 2061

Interiors



SYDNEY - SINGAPORE
 JAKARTA - MANILLA
 Architecture - Interiors - Project Managers

Level 11, 68 Alfred Street
 Milsions Point, NSW 2061
 Ph: (02) 9922 5922
 Fax: (02) 9922 5977
 Email: josini@bigpond.com

Macquarie Place Parramatta

Level 21 Plan



Scale	1:200 @A1	Checked
Drawn	AL	
Project No.	S11174	
Status	PRELIMINARY	
Plot Date	16/12/2009 9:28:41 AM	
Plot File	S:\11100-11199\11174_cshg_parramatta\00_main\cad\plots\DA... ... EA2.17[02].dwg	
Drawing No.	[Revision]	

EA2.17[02]

Sydney 1/243 Liverpool Street
 East Sydney NSW 2010 Australia
 T 02 8354 5100 F 02 8354 5199
 email syd@batesmart.com.au
 http://www.batesmart.com.au

Melbourne 1 Nicholson Street
 Melbourne VIC 3000 Australia
 T 03 8664 6200 F 03 8664 6300
 email melb@batesmart.com.au
 http://www.batesmart.com.au

Bates Smart Pty Ltd ABN 70 004 999 400

