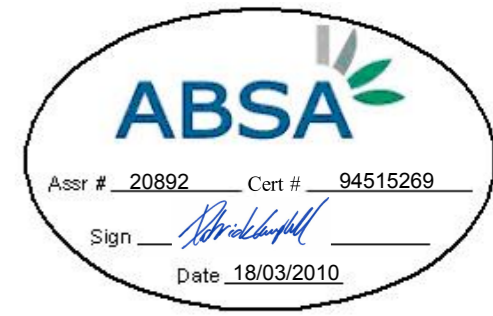
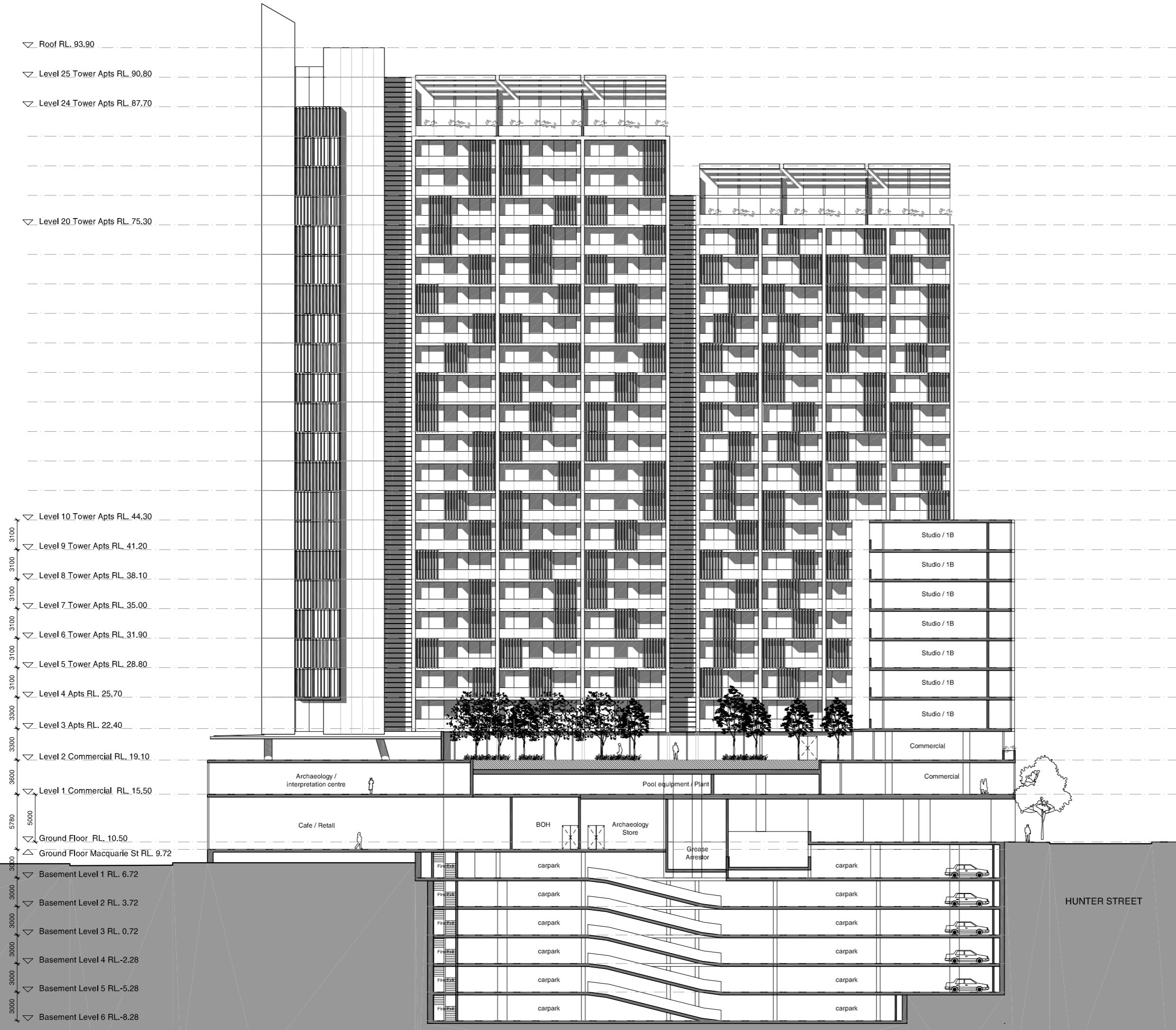


Check all dimensions and site conditions prior to commencement of any work, the purchase or ordering of any materials, fittings, plant, services or equipment and the preparation of shop drawings and/or the fabrication of any components.  
 Do not scale drawings - refer to figured dimensions only. Any discrepancies shall immediately be referred to the architect for clarification.  
 All drawings may not be reproduced or distributed without prior permission from the architect.



Assr # 20892 Cert # 94515269  
 Sign *[Signature]*  
 Date 18/03/2010



- ▽ Roof RL. 93.90
- ▽ Level 25 Tower Apts RL. 90.80
- ▽ Level 24 Tower Apts RL. 87.70
- ▽ Level 20 Tower Apts RL. 75.30
- ▽ Level 10 Tower Apts RL. 44.30
- ▽ Level 9 Tower Apts RL. 41.20
- ▽ Level 8 Tower Apts RL. 38.10
- ▽ Level 7 Tower Apts RL. 35.00
- ▽ Level 6 Tower Apts RL. 31.90
- ▽ Level 5 Tower Apts RL. 28.80
- ▽ Level 4 Apts RL. 25.70
- ▽ Level 3 Apts RL. 22.40
- ▽ Level 2 Commercial RL. 19.10
- ▽ Level 1 Commercial RL. 15.50
- ▽ Ground Floor RL. 10.50
- △ Ground Floor Macquarie St RL. 9.72
- ▽ Basement Level 1 RL. 6.72
- ▽ Basement Level 2 RL. 3.72
- ▽ Basement Level 3 RL. 0.72
- ▽ Basement Level 4 RL. -2.28
- ▽ Basement Level 5 RL. -5.28
- ▽ Basement Level 6 RL. -8.28

Revision	Date	Description	Initial	Checked
03	02/03/10	Major Project Application	AL	NM
02	04/02/10	Major Project Application	AL	NM
01	02/10/09	Consultant Issue for Review	AL	NM

Client



Level 11, 68 Alfred Street, Milsons Point, NSW 2061

Interiors



SYDNEY · SINGAPORE · JAKARTA · MANILLA  
 Architecture · Interiors · Project Managers  
 Level 11, 68 Alfred Street, Milsons Point, NSW 2061  
 Ph: (02) 9922 5922  
 Fax: (02) 9922 5977  
 Email: jia@jia.com.au

**Macquarie Place Parramatta**  
 Section BB  
 option 1

Scale 1:200

Drawn Checked

Project No. S11174

Status PRELIMINARY DA

Plot Date 2/3/2010 5:25:17 PM

Plot File S:\11100-11199-s11174\_ghg\_parramatta\00\_maicad\plots\DA...  
 --EA6.01[03].dwg

Drawing No. [Revision]

**EA6.01[03]**

Sydney 1/243 Liverpool Street East Sydney NSW 2010 Australia  
 T 02 8354 5100 F 02 8354 5199  
 email syd@batesmart.com.au  
 http://www.batesmart.com.au

Melbourne 1 Nicholson Street Melbourne VIC 3000 Australia  
 T 03 8664 6200 F 03 8664 6300  
 email mel@batesmart.com.au  
 http://www.batesmart.com.au

Bates Smart Pty Ltd ABN 70 004 999 400