

NSW GOVERNMENT  
 Planning

Issued under the Environmental Planning and Assessment Act 1979

Approved Application No. MPC09/0166

granted on the 30-05-2014

Signed *[Signature]*

Sheet No. 32 of 136

**LEGEND**

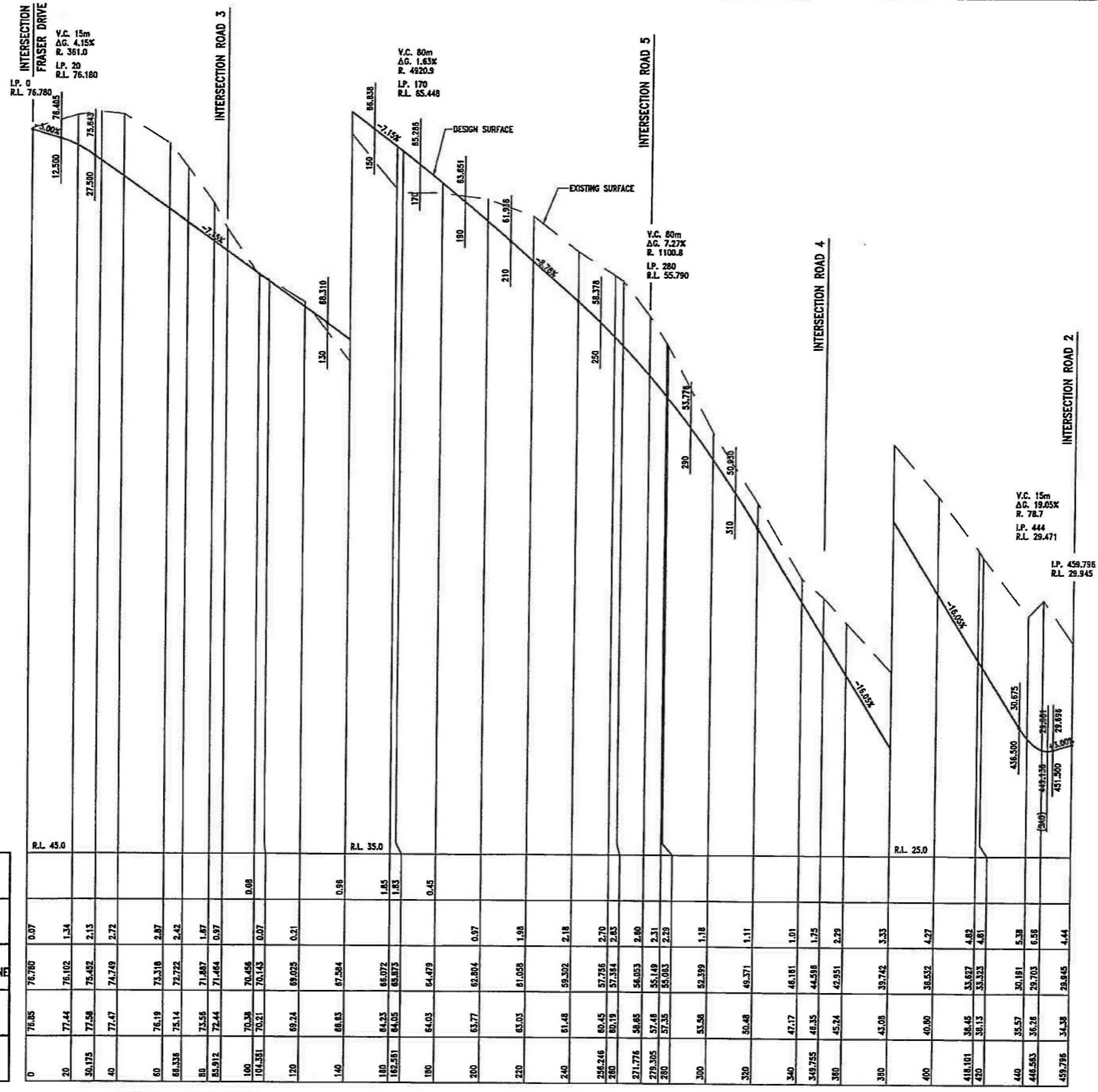
NEIGHBOURHOOD CONNECTOR	11.0m KERB - KERB	18.0m ROAD RESERVE
ACCESS STREET - BUS	9.0m KERB - KERB	17.0m ROAD RESERVE
ACCESS STREET	7.5m KERB - KERB	14.5m ROAD RESERVE
ACCESS STREET - DIVIDED	15.0m KERB - KERB	22.0m ROAD RESERVE
ACCESS STREET	6.0m KERB - KERB	13.0m ROAD RESERVE



PLAN LAYOUT  
 SCALE NTS

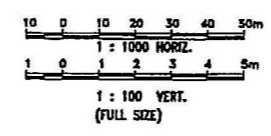
NEWLAND DEVELOPERS PTY LTD	09-374 03-07-2013
TERRANORA PRECINCT 1 ROAD HIERARCHY PLAN	SK3628 REVISION E

Bradford Lees Pty Ltd ABN 29 064 159 191	<b>Bradlees</b> Civil Consulting	
Ph 07 5528 6411 Fax 07 5528 6422 Web www.bradlees.com.au Email mail@bradlees.com.au	Postal PO Box 2293 Southport QLD 4215 Gold Coast Office Level 1, 34 Thuring Drive, Chevron Island QLD 4217	



DATUM	HEIGHT OF FILL	DEPTH OF CUT	PAYEMENT LEVEL ON PEGGED CENTRELINE	EXISTING SURFACE LEVEL	PEGGED CHAINAGE
R.L. 45.0			76.780	76.85	0
	0.07		76.102	77.44	20
	1.34		76.492	77.56	30.175
	2.15		74.749	77.47	40
	2.87		73.316	76.19	60
	2.42		72.722	75.14	66.335
	1.67		71.887	73.55	80
	0.97		71.464	72.44	85.912
	0.08		70.456	70.58	100
	0.21		69.025	70.21	104.551
	0.98		67.584	69.24	120
R.L. 35.0			66.072	66.83	140
	1.85		65.875	64.23	160
	1.83		64.479	64.05	162.551
	0.45		62.804	64.03	180
	0.97		61.058	63.77	200
	1.98		59.302	63.03	220
	2.18		57.755	61.48	240
	2.70		57.364	60.45	256.246
	2.83		56.053	60.19	260
	2.80		55.149	58.65	271.716
	2.29		55.003	57.48	279.305
	1.18		52.399	57.35	280
	1.11		49.571	53.58	300
	1.91		46.181	50.48	320
	1.75		44.598	47.17	340
	2.29		42.951	46.35	348.755
	3.33		39.742	45.74	360
	4.27		36.532	43.08	380
	4.82		33.627	40.80	400
	4.81		30.181	38.45	416.101
	5.38		29.703	36.13	420
	6.56		28.945	35.57	440
	4.44		28.895	35.26	448.583
			28.945	34.38	459.795

HORIZONTAL CURVE DATA



**NEWLAND DEVELOPERS PTY LTD**  
**TERRANORA PRECINCT 1**  
**ROAD 1**  
**LONGITUDINAL SECTION**

**09-374**  
07-01-2013

**SK 3586**  
REVISION B

Bradford Lees Pty Ltd  
 ABN 29 064 159 191

Ph 07 5528 6411  
 Fax 07 5528 6422  
 Web www.bradlees.com.au  
 Email mail@bradlees.com.au  
 Postal PO Box 2293, Southport QLD 4215  
 Gold Coast Office Level 1, 34 Thomas Drive, Chevron Island QLD 4217

**Bradlees**  
Civil Consulting

QUALITY ASSURED COMPANY  
 ISO 9001:2008  
 REG. NO. 253

NSW GOVERNMENT  
Planning

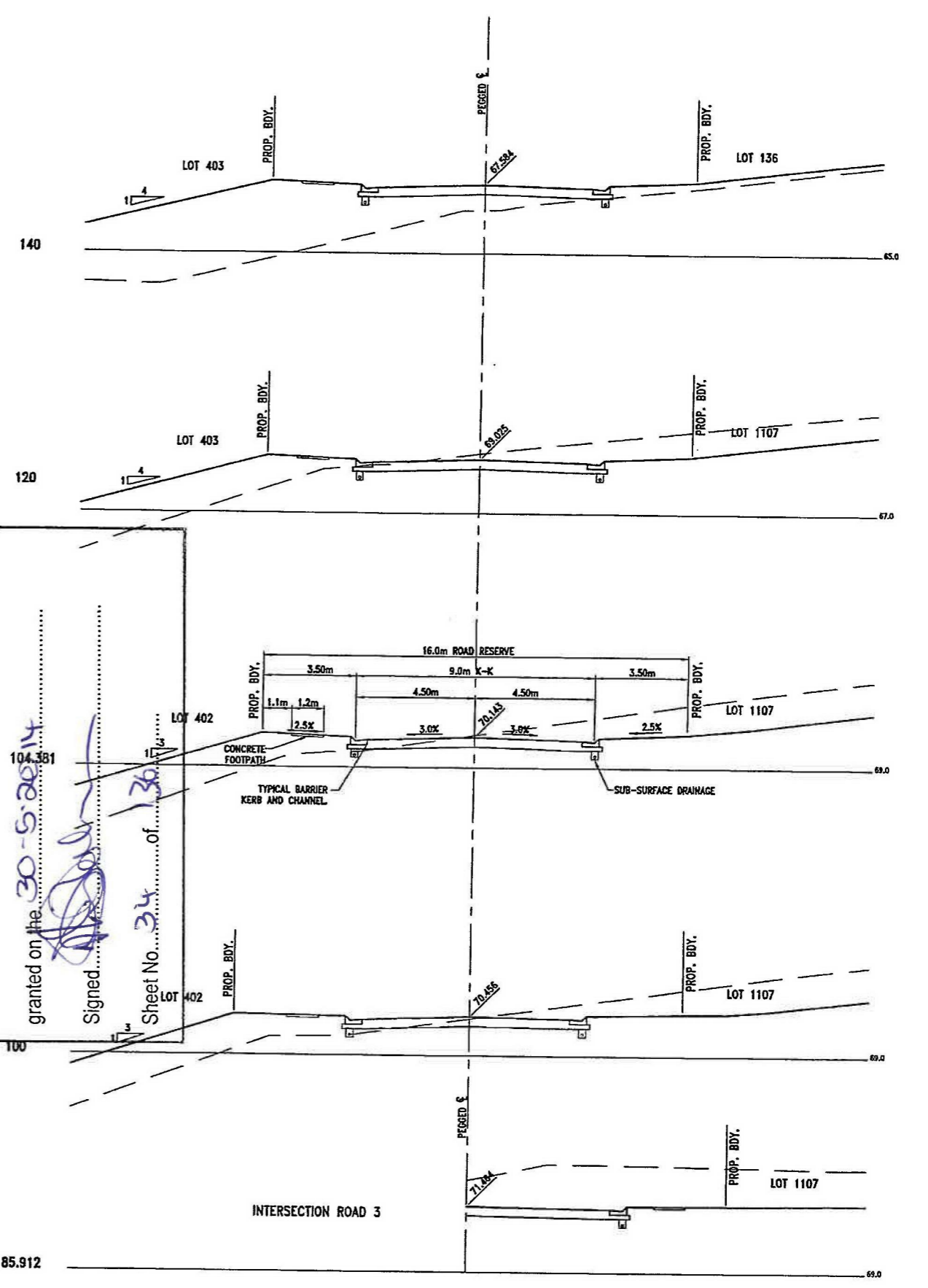
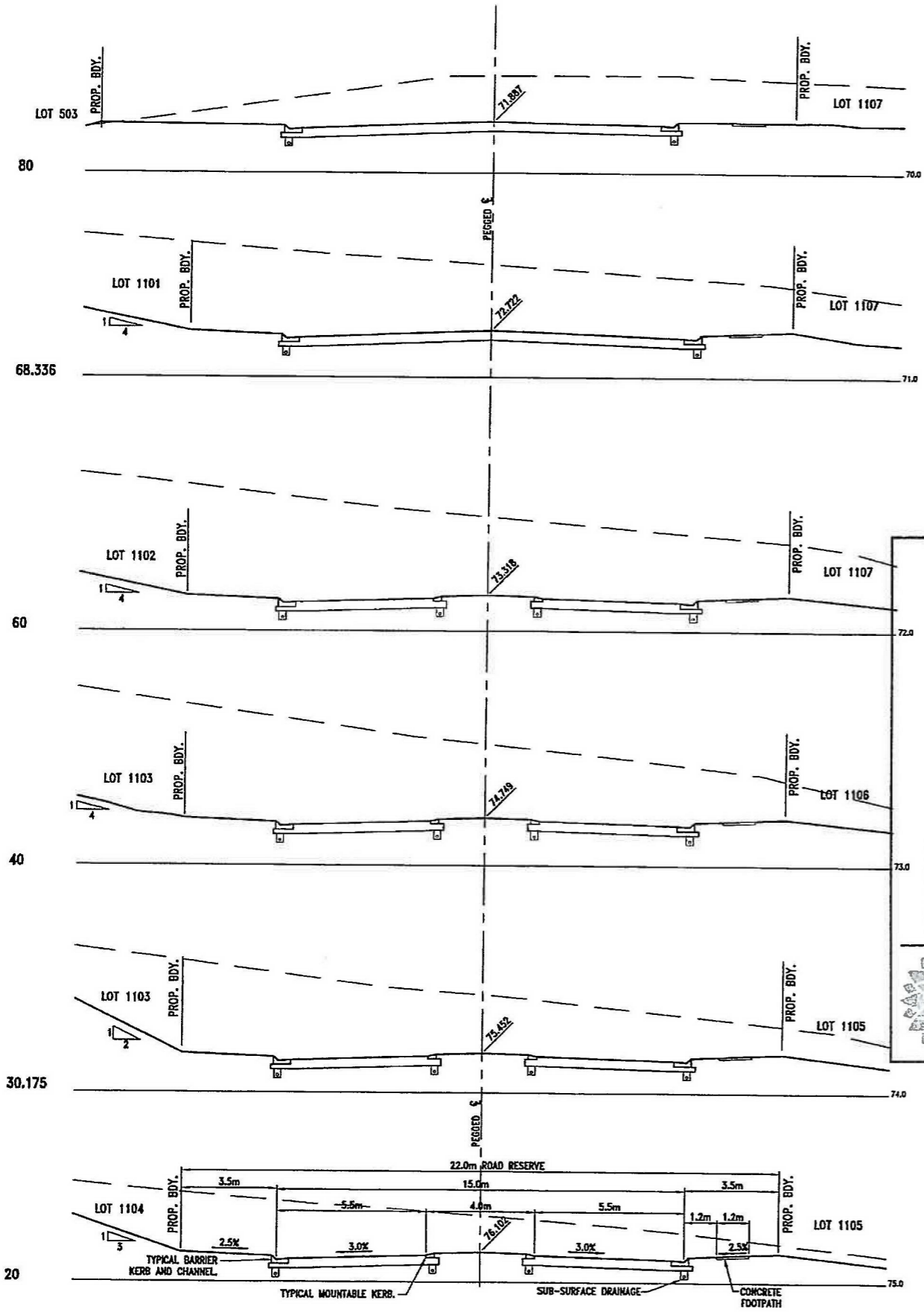
Issued under the Environmental Planning and Assessment Act 1979

Approved Application No. **MP09 0166**

granted on the **30-9-2014**

Signed.....

Sheet No. **33** of **136**



NSW GOVERNMENT  
Planning

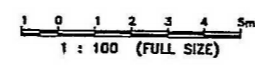
Issued under the Environmental Planning and Assessment Act 1979

Approved Application No. *MP09-0166*

granted on the *30-5-2014*

Signed *[Signature]*

Sheet No. *34* of *36*



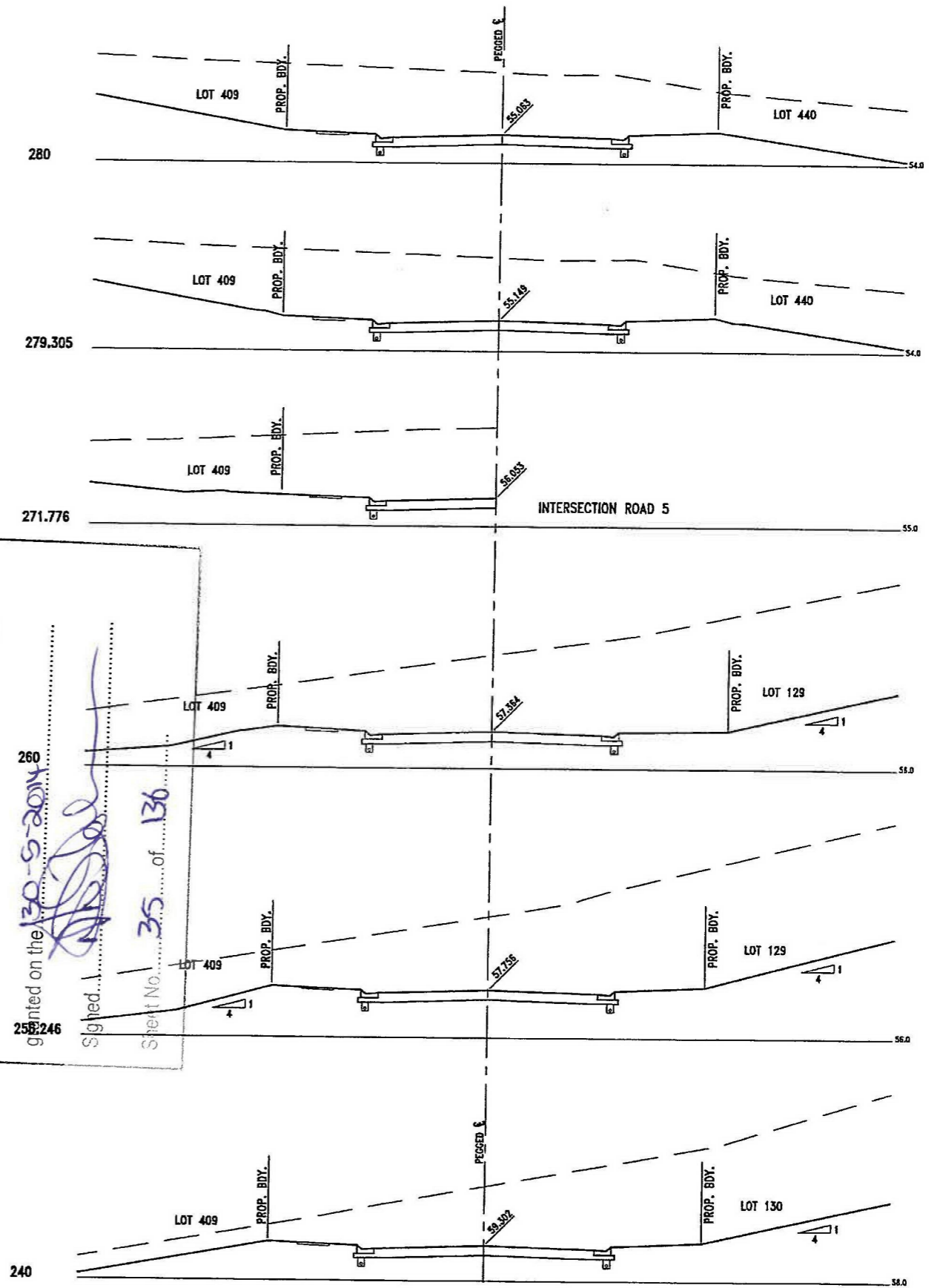
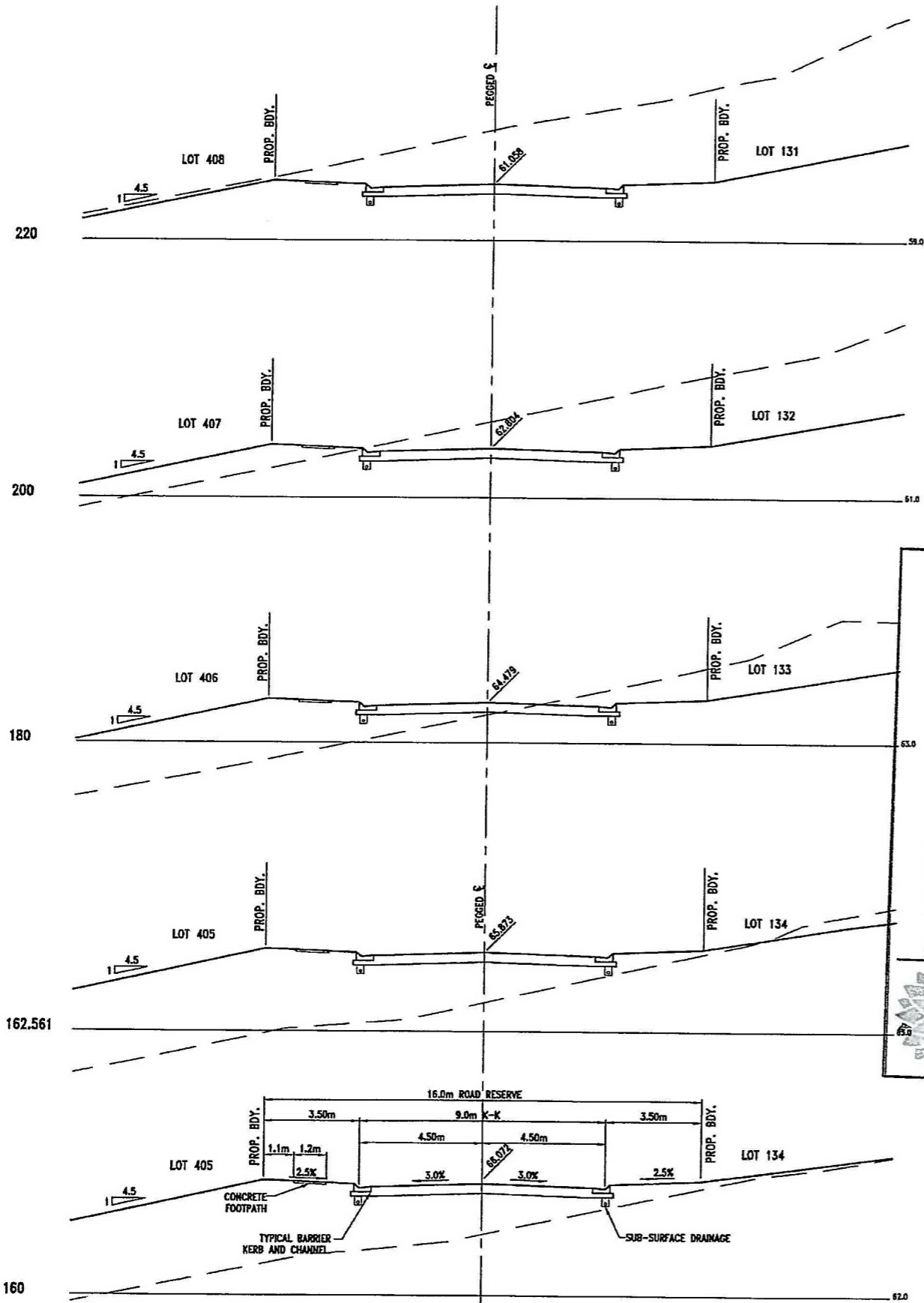
NEWLAND DEVELOPERS PTY LTD	09-374 07-01-2013
TERRANORA PRECINCT 1 ROAD 1 CROSS SECTIONS SHEET 1 OF 3	SK 3587 REVISION B

Bradford Lees Pty Ltd  
ABN 29 064 159 191

Ph 07 5528 6411  
Fax 07 5528 6422  
Web www.bradlees.com.au  
Email mail@bradlees.com.au  
Postal PO Box 2293, Southport QLD 4215  
Gold Coast Office Level 1, 34 Thomas Drive, Chevron Island QLD 4217

**Bradlees**  
Civil Consulting

QUALITY ASSURED COMPANY  
AS/NZS ISO 9001:2008  
REG. NO. 233



NSW GOVERNMENT  
Planning

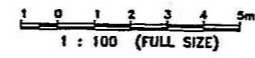
Issued under the Environmental Planning and Assessment Act 1979

Approved Application No. **m09-016**

granted on the **130-9-2014**

Signed: *[Signature]*

Sheet No. **35** of **136**



**NEWLAND DEVELOPERS PTY LTD**

**09-374**  
07-01-2013

**TERRANORA PRECINCT 1**  
**ROAD 1 CROSS SECTIONS**  
**SHEET 2 OF 3**

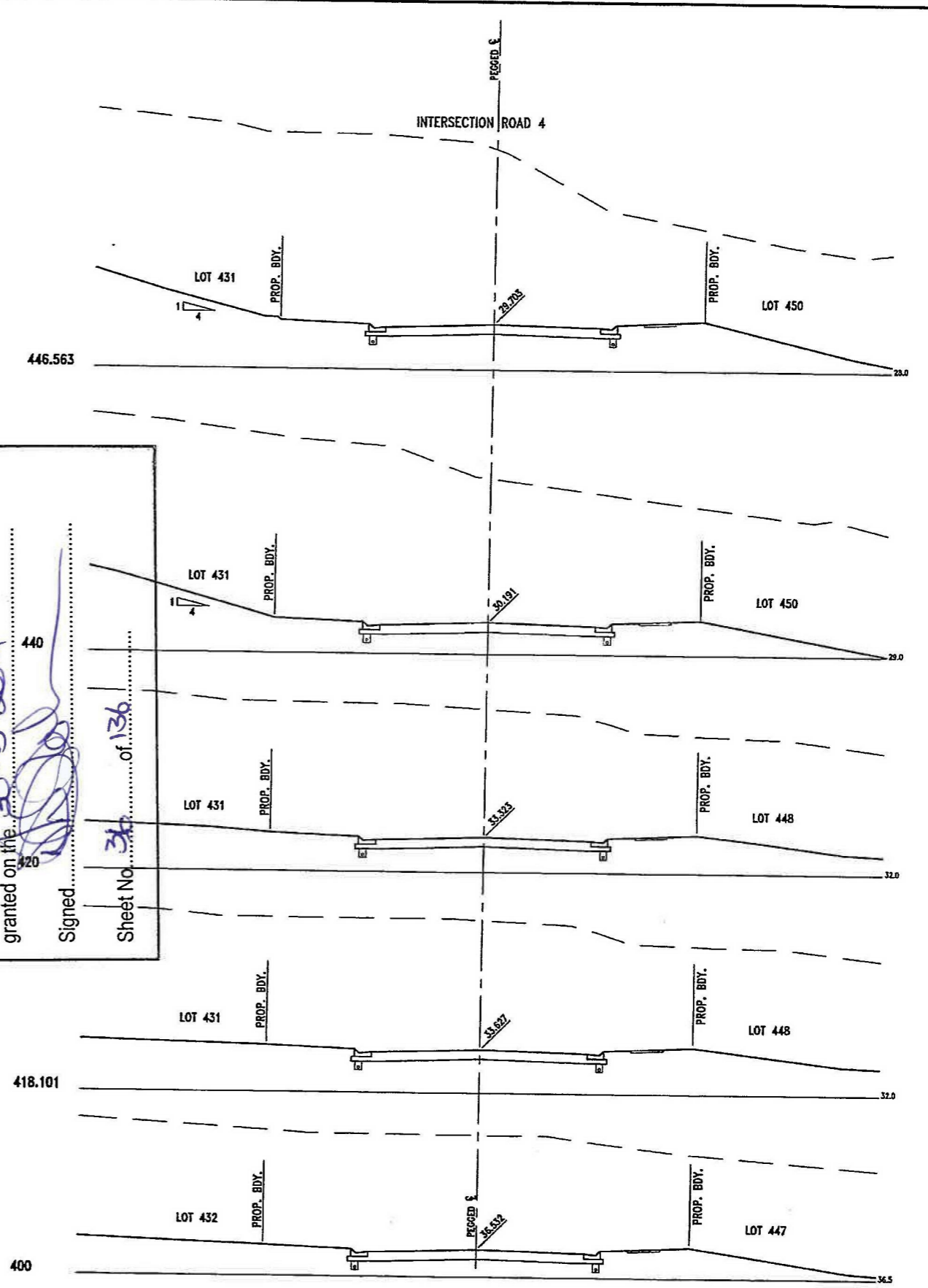
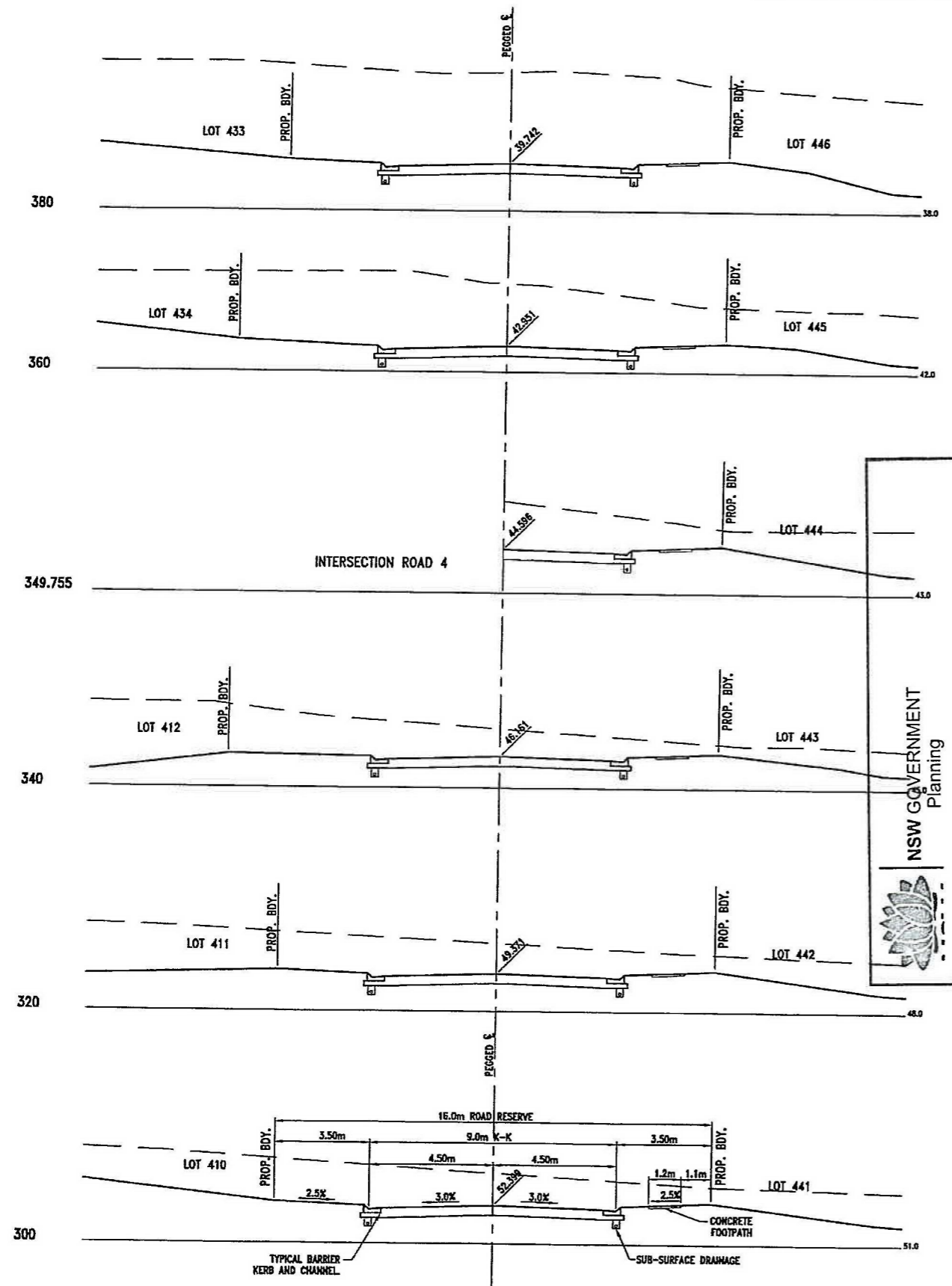
**SK 3588**  
REVISION B

Bradford Lees Pty Ltd  
ABN 29 064 159 191

**Bradlees**  
Civil Consulting

PH 07 5528 6411  
Fax 07 5528 6422  
Web www.bradlees.com.au  
Email mail@bradlees.com.au  
Postal PO Box 2293, Southport QLD 4215  
Gold Coast Office Level 1, 34 Thomas Drive, Chevron Island QLD 4217

QUALITY ASSURED COMPANY  
AS/NZS ISO 9001:2008  
MEM. NO. 233



NSW GOVERNMENT  
Planning

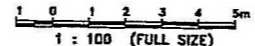
Issued under the Environmental Planning and Assessment Act 1979

Approved Application No. MP.09.0166

granted on the 30-6-2014

Signed: [Signature]

Sheet No. 34 of 136



NEWLAND DEVELOPERS PTY LTD

09-374  
07-01-2013

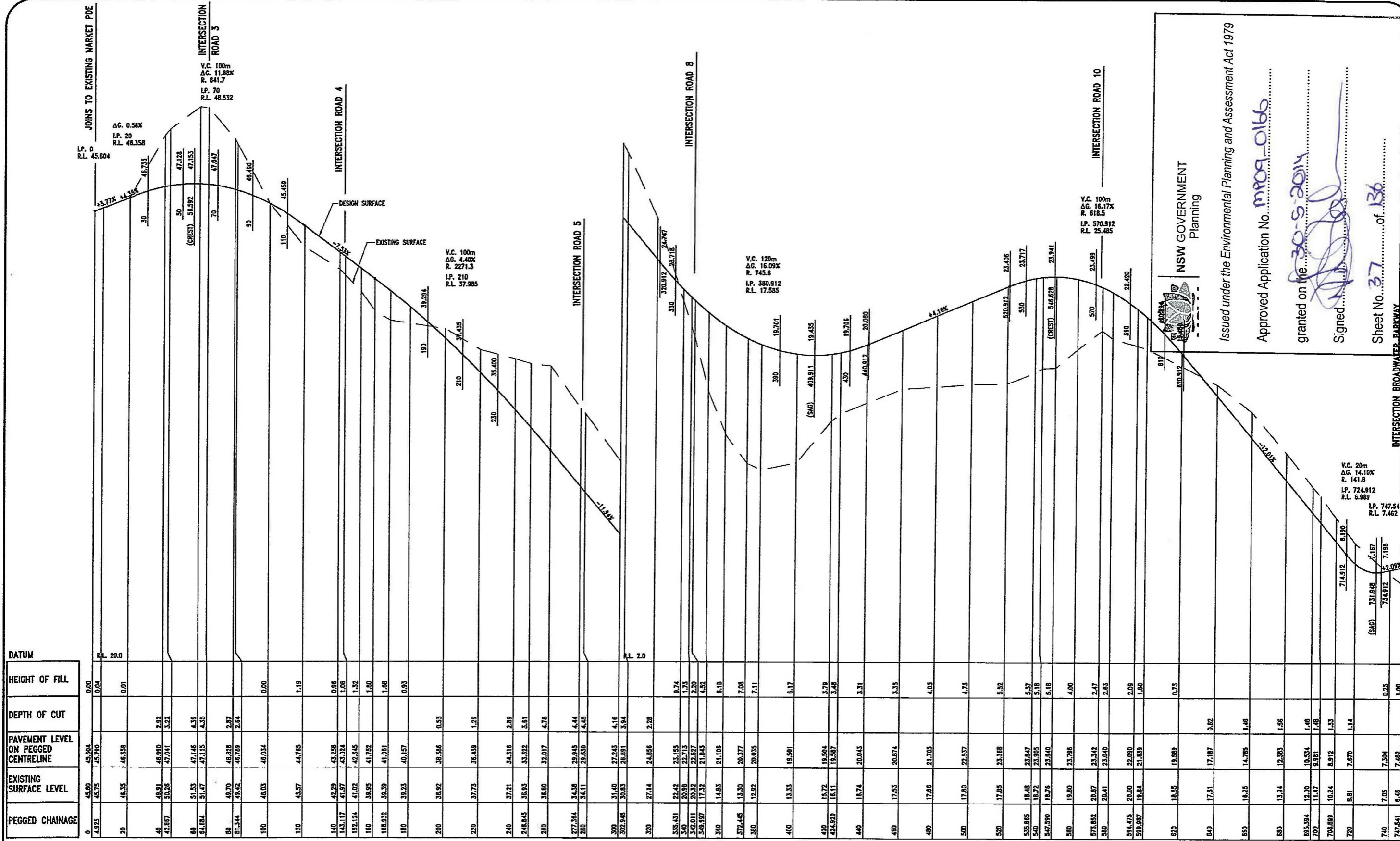
TERRANORA PRECINCT 1  
ROAD 1 CROSS SECTIONS  
SHEET 3 OF 3

SK 3589  
REVISION B

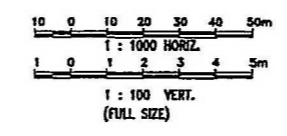
Bradford Lees Pty Ltd  
ABN 29 064 159 191

Ph 07 5528 6411  
Fax 07 5528 6422  
Web www.bradlees.com.au  
Email mail@bradlees.com.au  
Postal PO Box 2293, Southport QLD 4215  
Gold Coast Office Level 1, 34 Thomas Drive, Chevron Island QLD 4217





HORIZONTAL CURVE DATA  
 R60 R25 R25 R80.5 R30.5 R30.5 R79.5 R79.5 R49.5 R50 R80 R30



**NEWLAND DEVELOPERS PTY LTD**  
**TERRANORA PRECINCT 1**  
**ROAD 2**  
**LONGITUDINAL SECTION**

**09-374**  
 07-01-2013

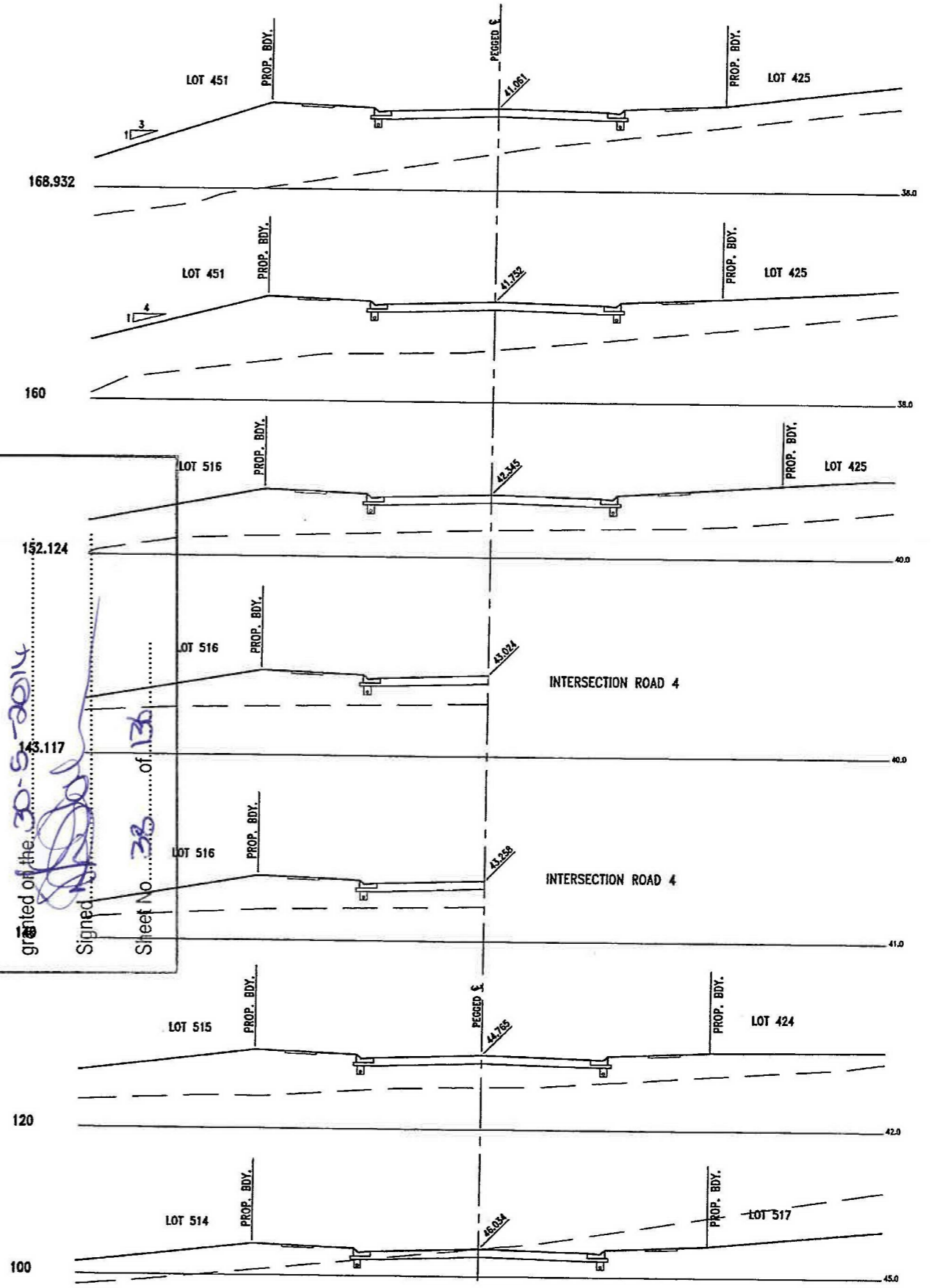
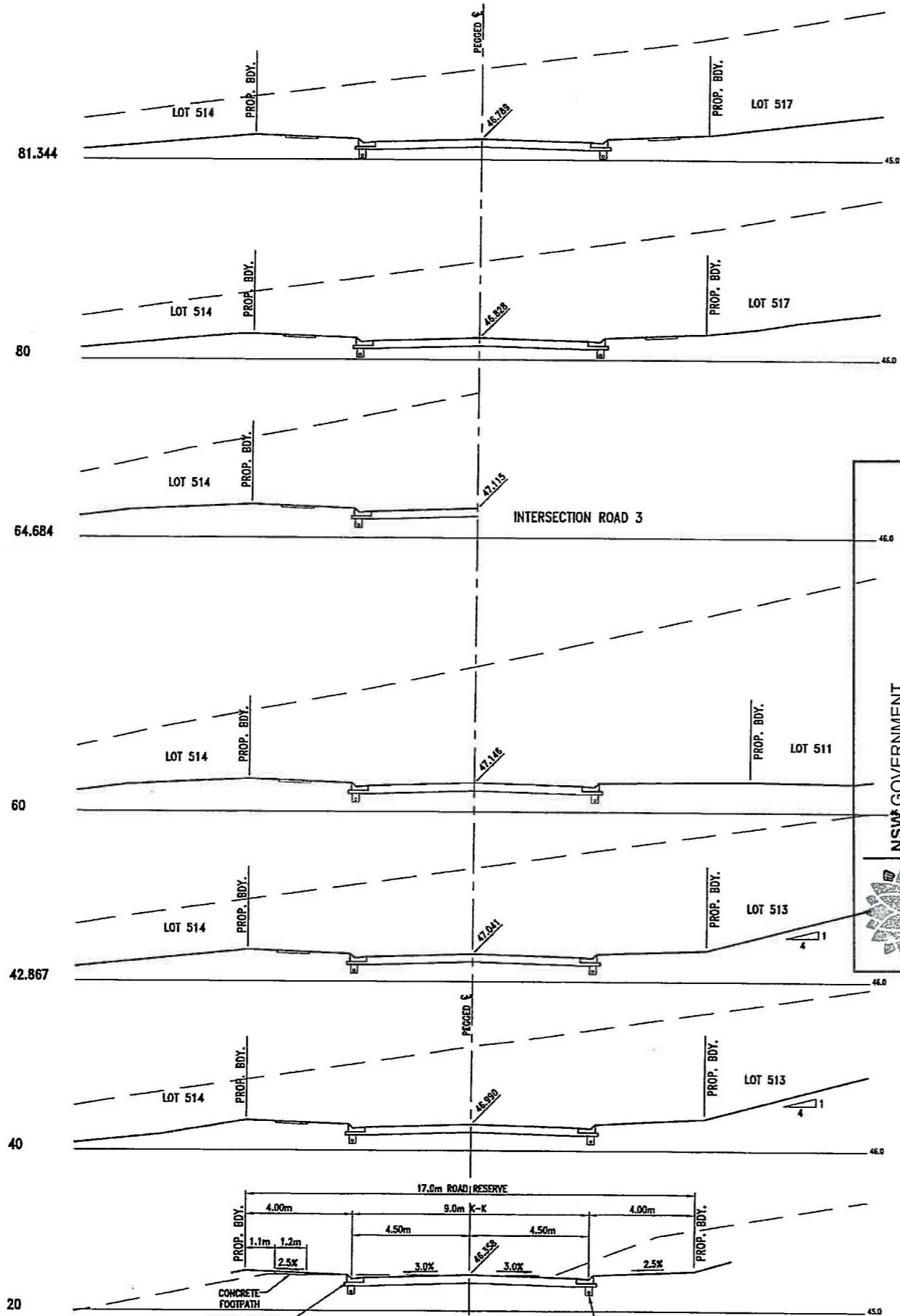
**SK 3590**  
 REVISION B

**Bradlees**  
 Civil Consulting

Bradford Lees Pty Ltd  
 ABN 29 064 159 191  
 Ph 07 5528 6411  
 Fax 07 5528 6422  
 Web www.bradlees.com.au  
 Email mail@bradlees.com.au  
 Postal PO Box 2293, Southport QLD 4215  
 Gold Coast Office Level 1, 34 Thomas Drive, Chevron Island QLD 4217

Approved Application No. M109-0166  
 granted on the 30-9-2014  
 Signed [Signature]  
 Sheet No. 37 of 136

NSW GOVERNMENT  
 Planning  
 Issued under the Environmental Planning and Assessment Act 1979



NSW GOVERNMENT  
Planning

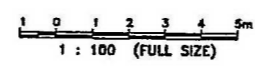
Issued under the Environmental Planning and Assessment Act 1979

Approved Application No. **MP09-016**

granted on the **30-5-2014**

Signed: *[Signature]*

Sheet No. **3B** of **13B**



**NEWLAND DEVELOPERS PTY LTD**

**TERRANORA PRECINCT 1**  
**ROAD 2 CROSS SECTIONS**  
**SHEET 1 OF 5**

**09-374**  
07-01-2013

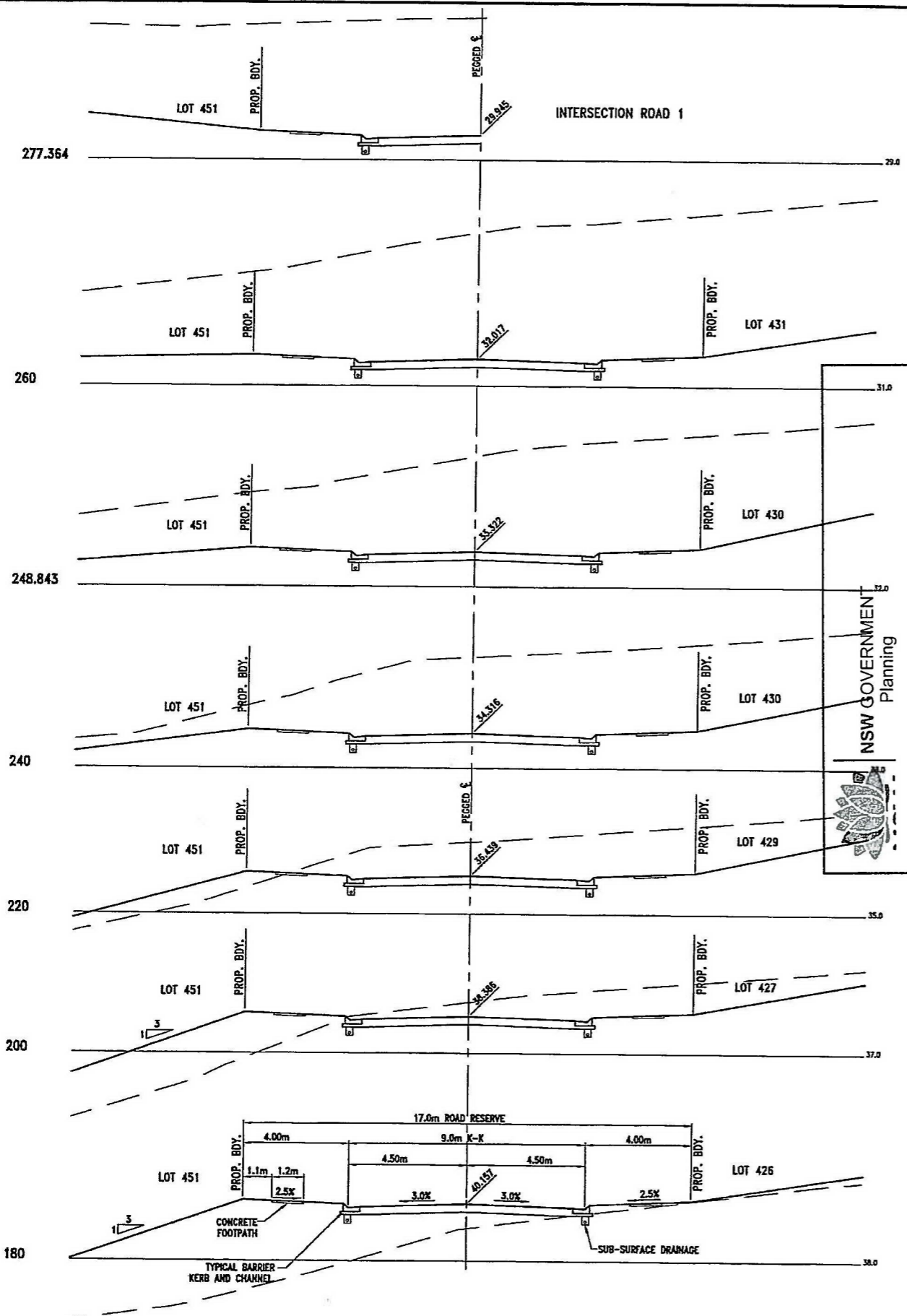
**SK 3591**  
REVISION B

Bradford Lees Pty Ltd  
ABN 29 054 159 191

Ph 07 5528 6411  
Fax 07 5528 6422  
Web www.bradlees.com.au  
Email mail@bradlees.com.au  
Postal PO Box 2293, Southport QLD 4215  
Gold Coast Office Level 1, 34 Thomas Drive, Chevron Island QLD 4217

**Bradlees**  
Civil Consulting





NSW GOVERNMENT  
Planning

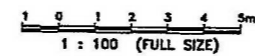
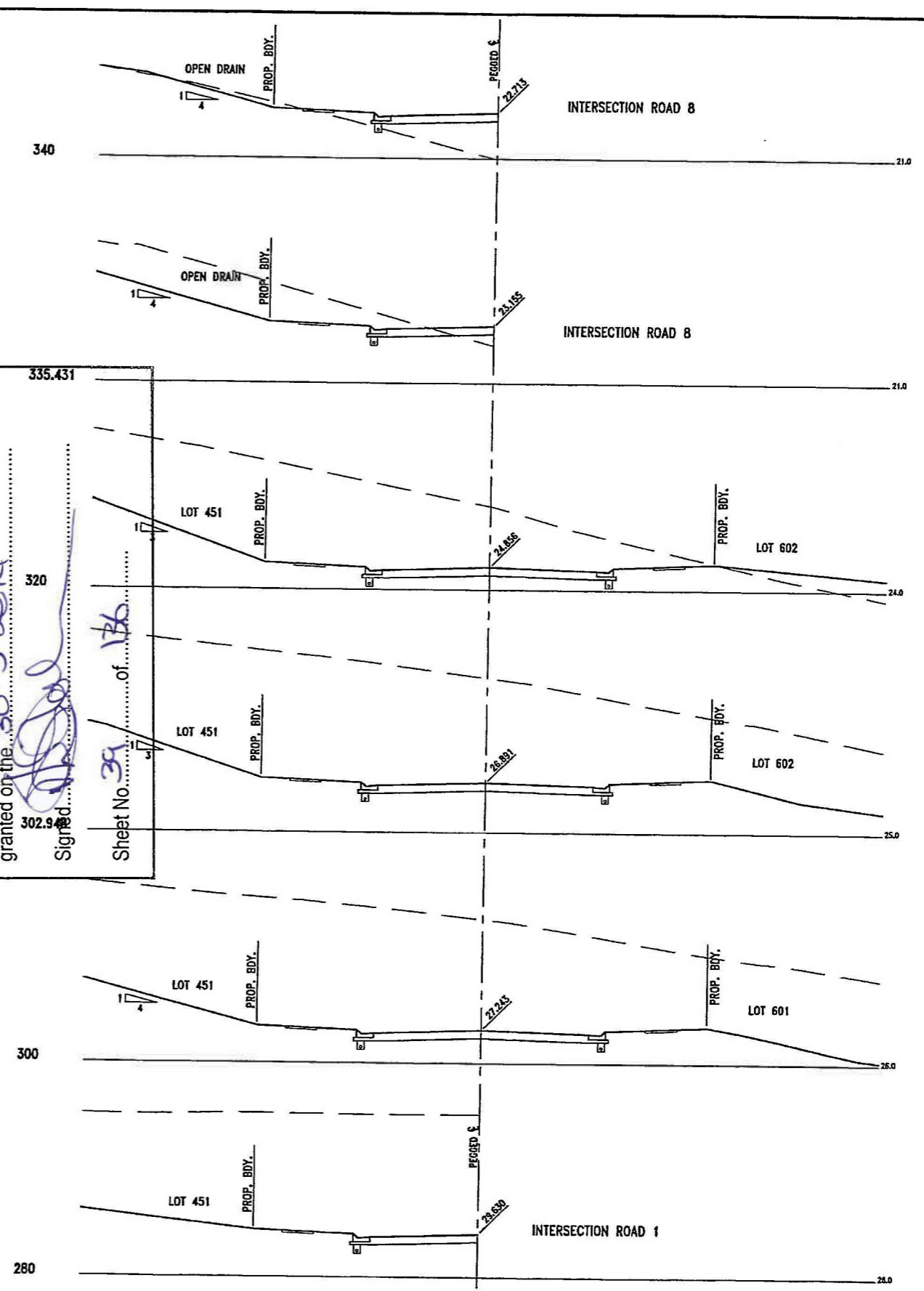
Issued under the Environmental Planning and Assessment Act 1979

Approved Application No. M209.0166

granted on the 30-9-2014

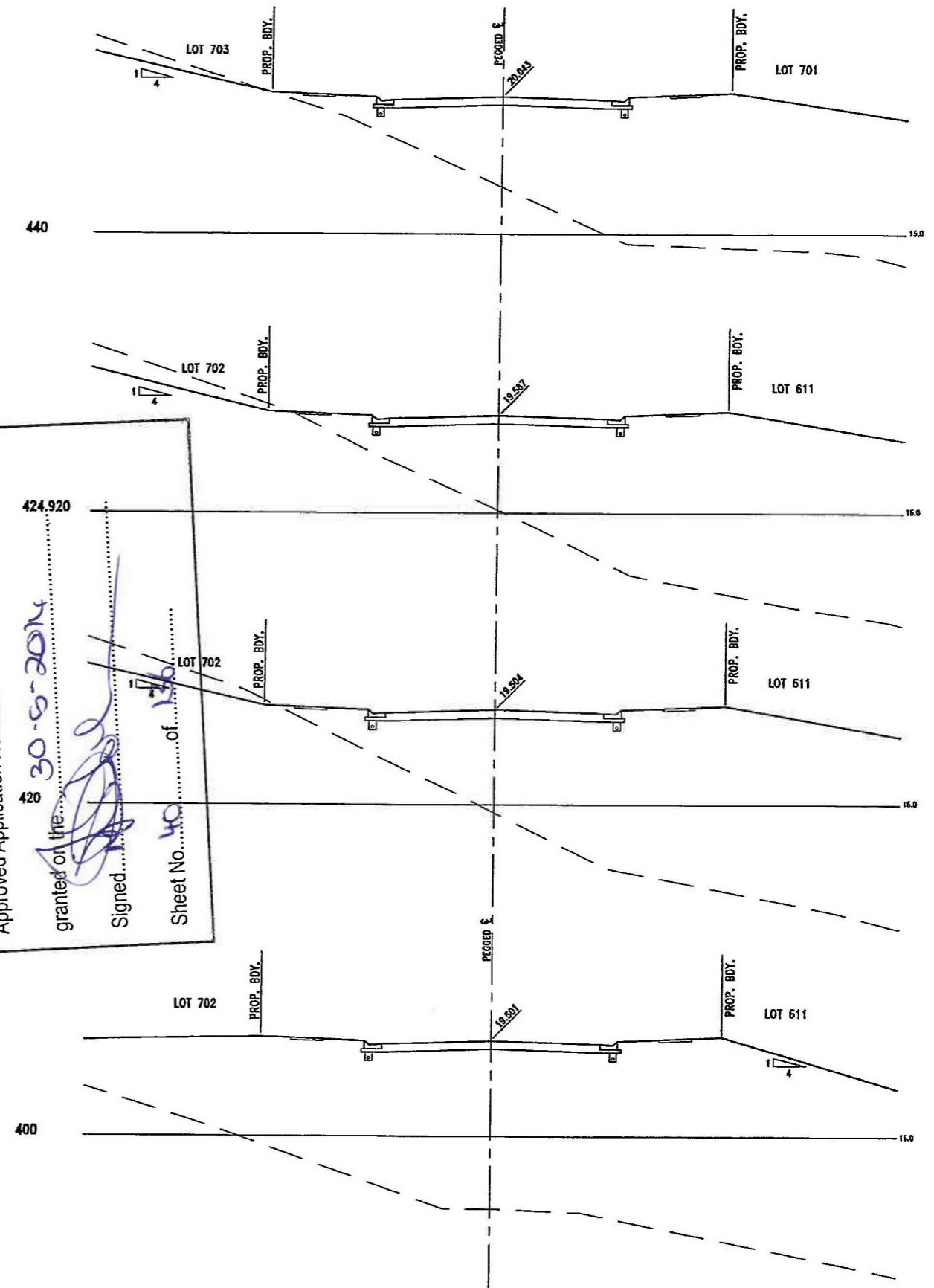
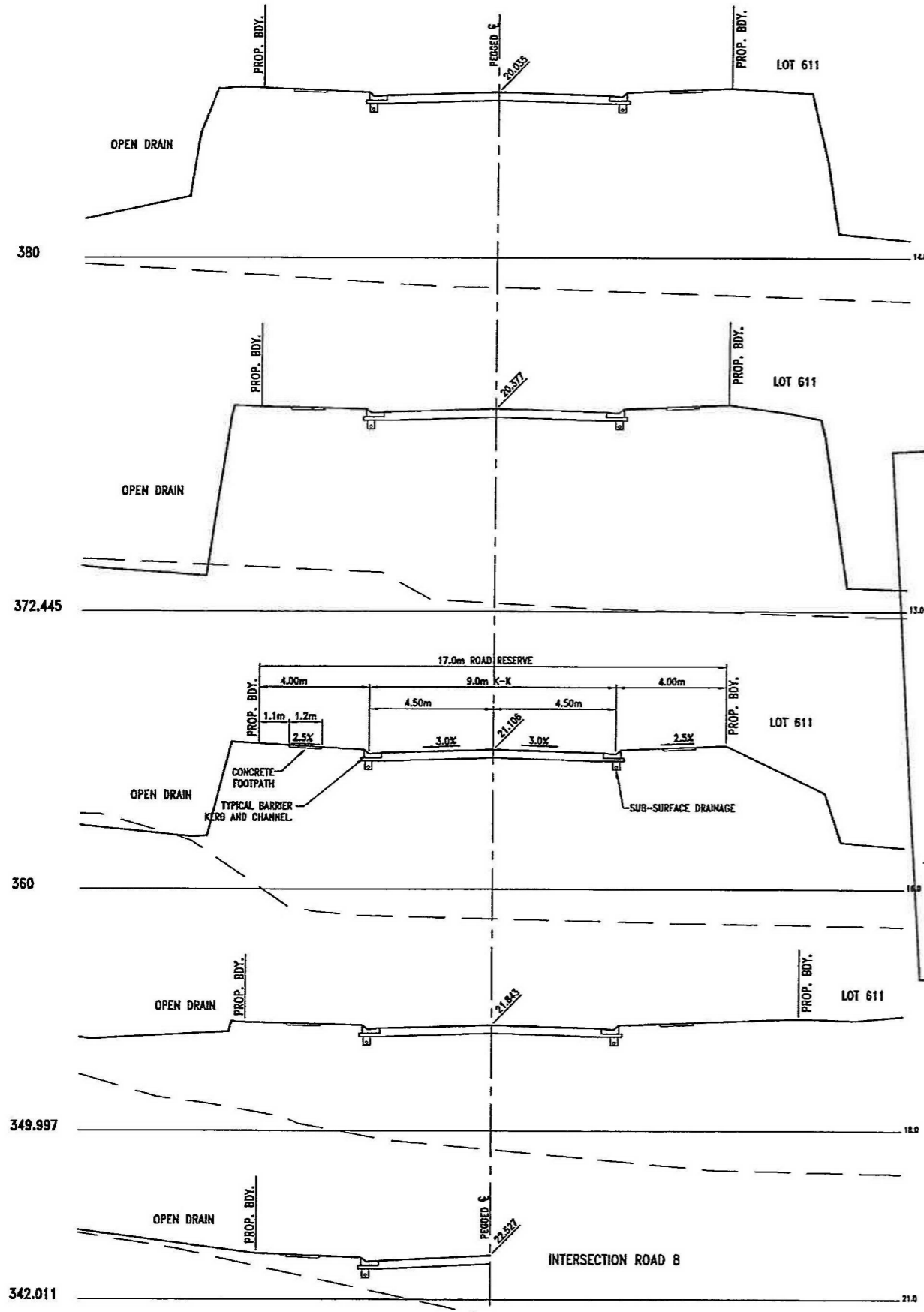
Signature [Signature]

Sheet No. 39 of 136



NEWLAND DEVELOPERS PTY LTD	09-374 07-01-2013
TERRANORA PRECINCT 1 ROAD 2 CROSS SECTIONS SHEET 2 OF 5	SK 3592 REVISION B

Bradford Lees Pty Ltd ABN 29 064 159 191 Ph 07 5528 6411 Fax 07 5528 6422 Web www.bradlees.com.au Email mail@bradlees.com.au Postal PO Box 2293, Southport QLD 4215 Gold Coast Office Level 1, 34 Thomas Drive, Chevron Island QLD 4217	<b>Bradlees</b> Civil Consulting	
--	-------------------------------------	--



NSW GOVERNMENT  
Planning

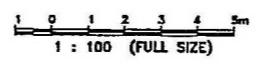
Issued under the Environmental Planning and Assessment Act 1979

Approved Application No. MPO9-0166

granted on the 30-6-2014

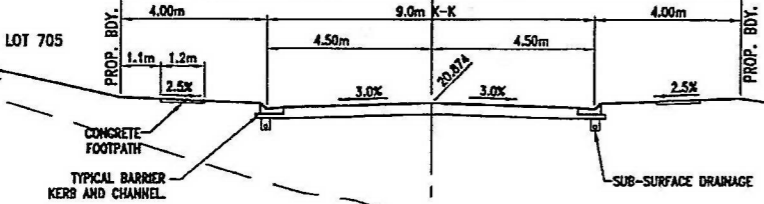
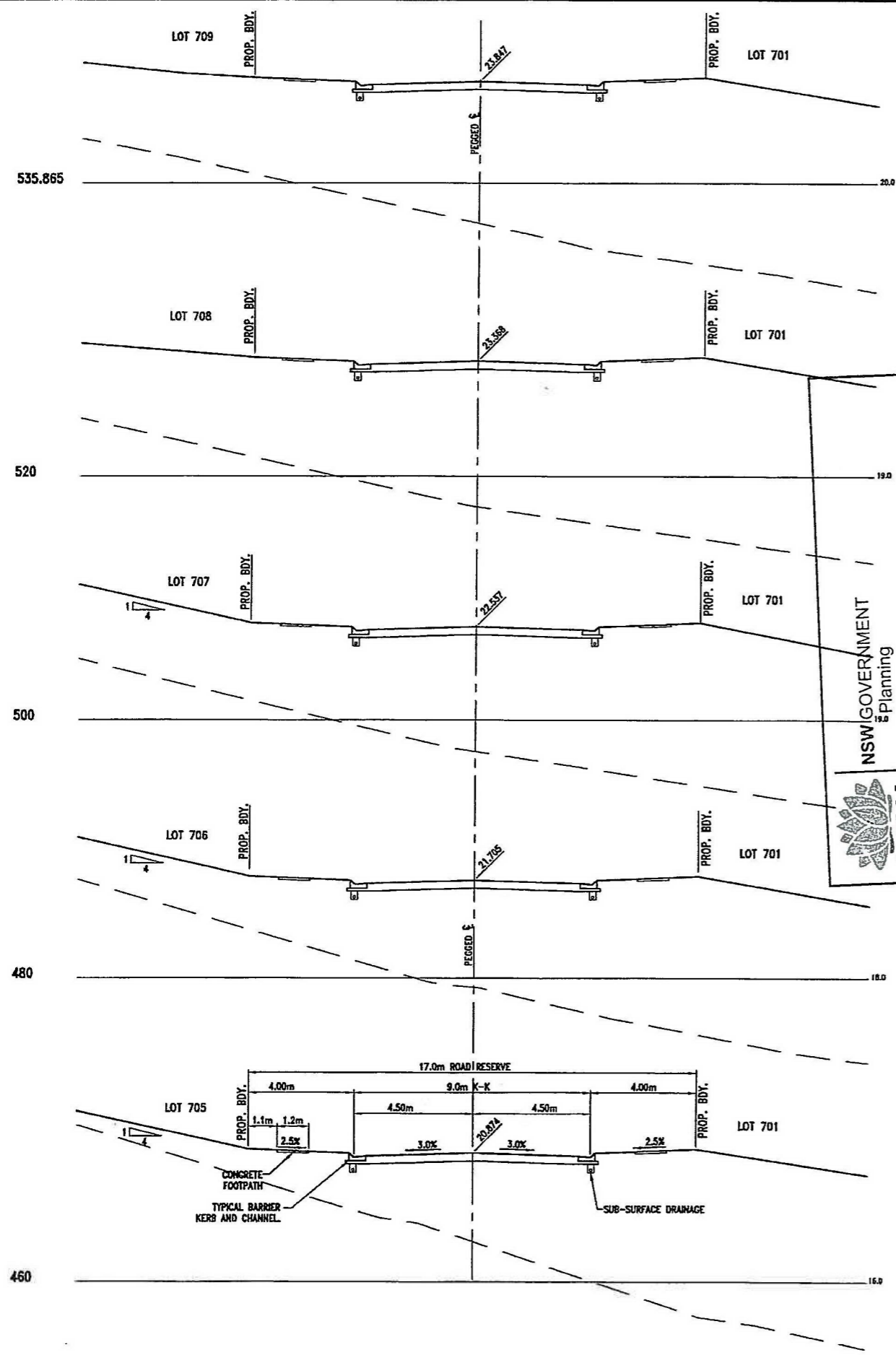
Signed: [Signature]

Sheet No. 40 of 136

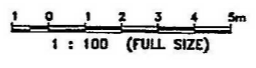
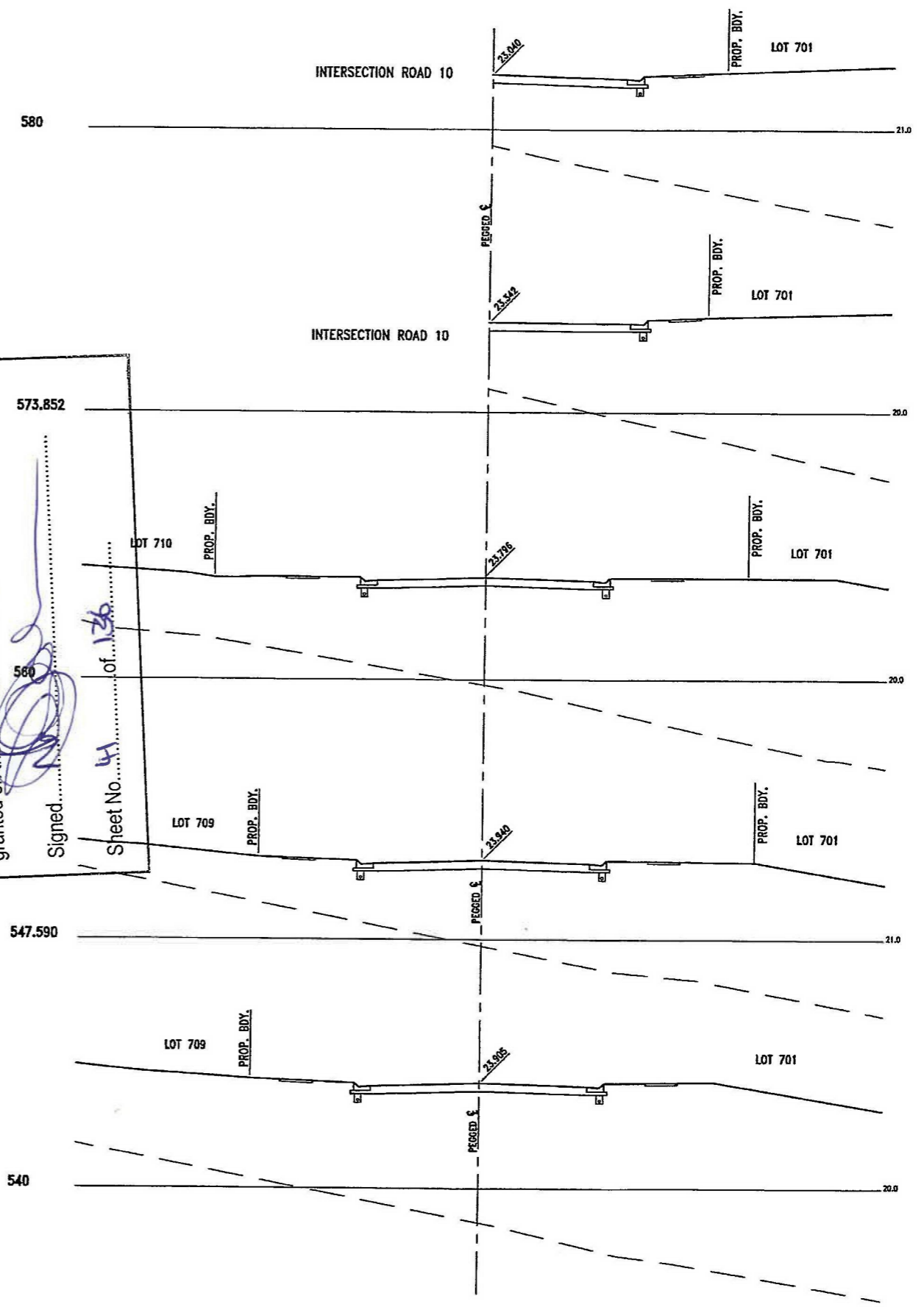


NEWLAND DEVELOPERS PTY LTD	09-374 07-01-2013
TERRANORA PRECINCT 1 ROAD 2 CROSS SECTIONS SHEET 3 OF 5	SK 3593 REVISION B

Bradford Lees Pty Ltd ABN 29 064 159 191 Ph 07 5528 6411 Fax 07 5528 6422 Web www.bradlees.com.au Email mail@bradlees.com.au Postal PO Box 2293, Southport QLD 4215 Gold Coast Office Level 1, 34 Thomas Drive, Chevron Island QLD 4217	<b>Bradlees</b> Civil Consulting	  <small>AS/NZS ISO 9001:2008</small> <small>REG. NO. 333</small>
--	-------------------------------------	--



NSW GOVERNMENT  
 Planning  
 Issued under the Environmental Planning and Assessment Act 1979  
 Approved Application No. M2019-0166  
 granted on the 30-5-2014  
 Signed [Signature]  
 Sheet No. 41 of 136



NEWLAND DEVELOPERS PTY LTD  
 TERRANORA PRECINCT 1  
 ROAD 2 CROSS SECTIONS  
 SHEET 4 OF 5

09-374  
 07-01-2013

SK 3594  
 REVISION B

Bradford Lees Pty Ltd  
 ABN 29 064 159 191  
 Ph 07 5528 6411  
 Fax 07 5528 6422  
 Web www.bradlees.com.au  
 Email mail@bradlees.com.au  
 Postal PO Box 2293, Southport QLD 4215  
 Gold Coast Office Level 1, 34 Thomas Drive, Chevron Island QLD 4217

**Bradlees**  
 Civil Consulting

NSW-DEVELOPERS  
 QUALITY ASSURED COMPANY  
 14 YEARS ISO 9001:2008  
 REG. NO. 233