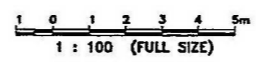
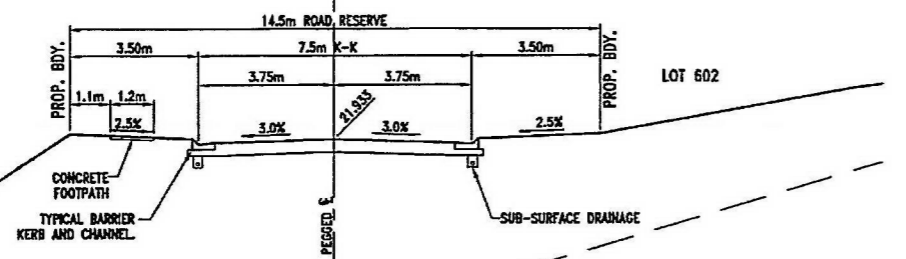
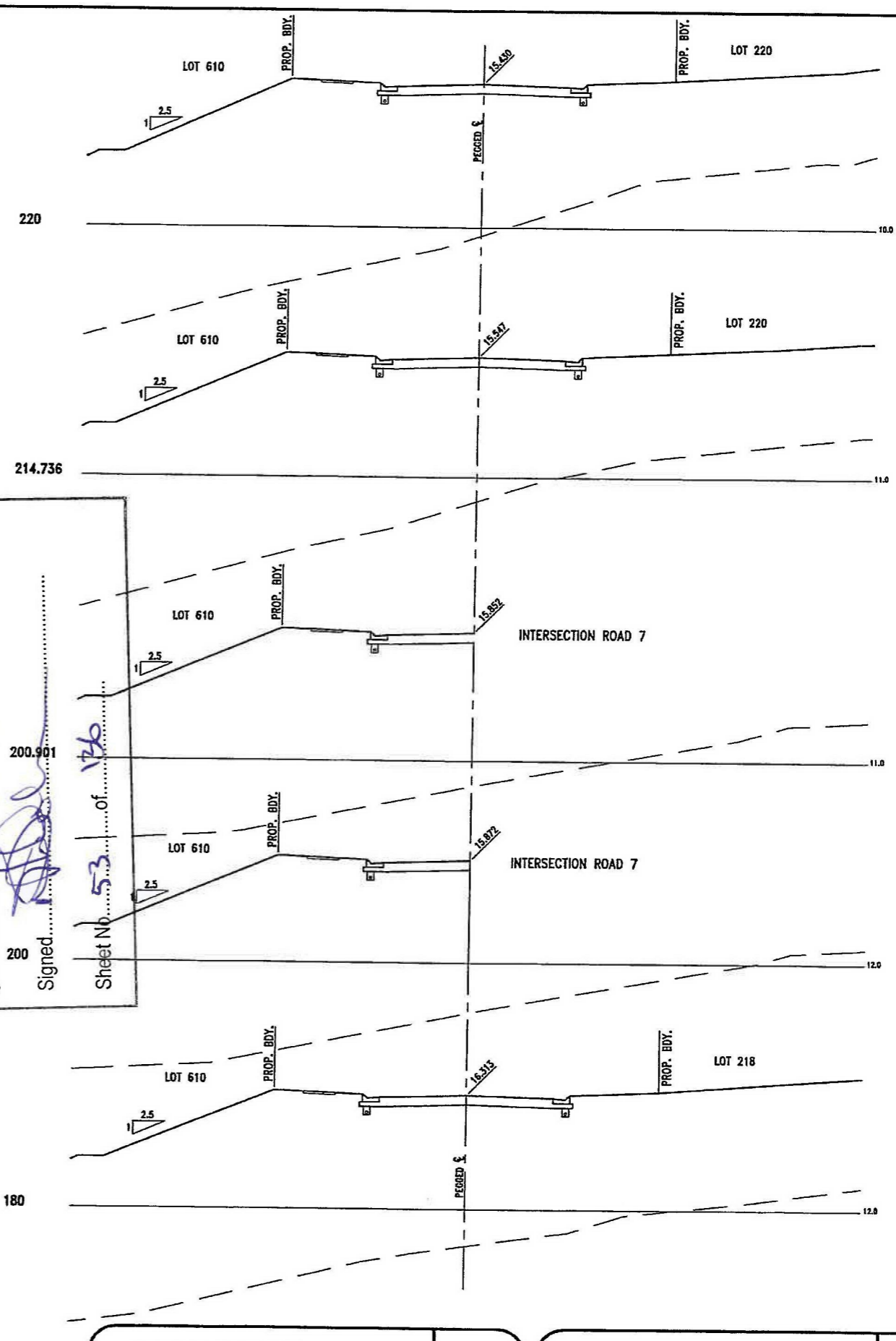
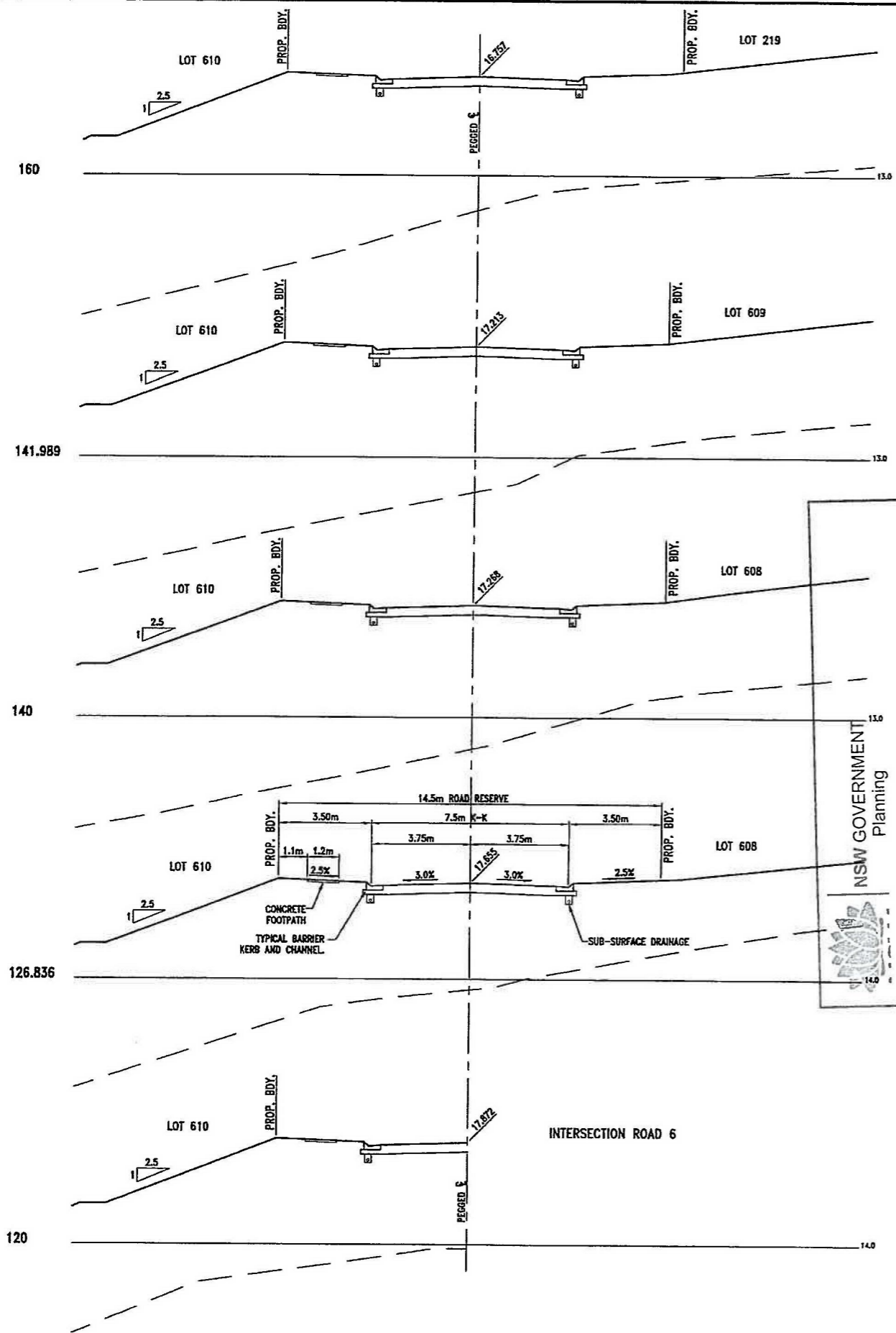

 NSW GOVERNMENT
 Planning
 Issued under the Environmental Planning and Assessment Act 1979
 Approved Application No. MPO9-0166
 granted on the 30-9-2014
 Signed [Signature]
 Sheet No. 52 of 136



NEWLAND DEVELOPERS PTY LTD TERRANORA PRECINCT 1 ROAD 8 CROSS SECTIONS SHEET 1 OF 4	09-374 07-01-2013 SK 3605 REVISION 8
-------------------------------------------------------------------------------------------------------------------------	-------------------------------------------------------------

Bradford Lees Pty Ltd ABN 29 054 159 191 Ph 07 5528 6411 Fax 07 5528 6422 Web www.bradlees.com.au Email mail@bradlees.com.au Postal PO Box 2293, Southport QLD 4215 Gold Coast Office Level 1, 34 Thomas Drive, Chevron Island QLD 4217	 Bradlees Civil Consulting
--------------------------------------------------------------------------------------------------------------------------------------------------------------------------------------------------------------------------------------------------------------	------------------------------------------------------------------------------------------------------------------------------





NSW GOVERNMENT
Planning

Issued under the Environmental Planning and Assessment Act 1979

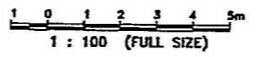
Approved Application No. 200/0160

granted on the 30-5-2014

Signed [Signature]

200.901

Sheet No. 53 of 176



NEWLAND DEVELOPERS PTY LTD

TERRANORA PRECINCT 1
ROAD 8 CROSS SECTIONS
SHEET 2 OF 4

09-374
07-01-2013

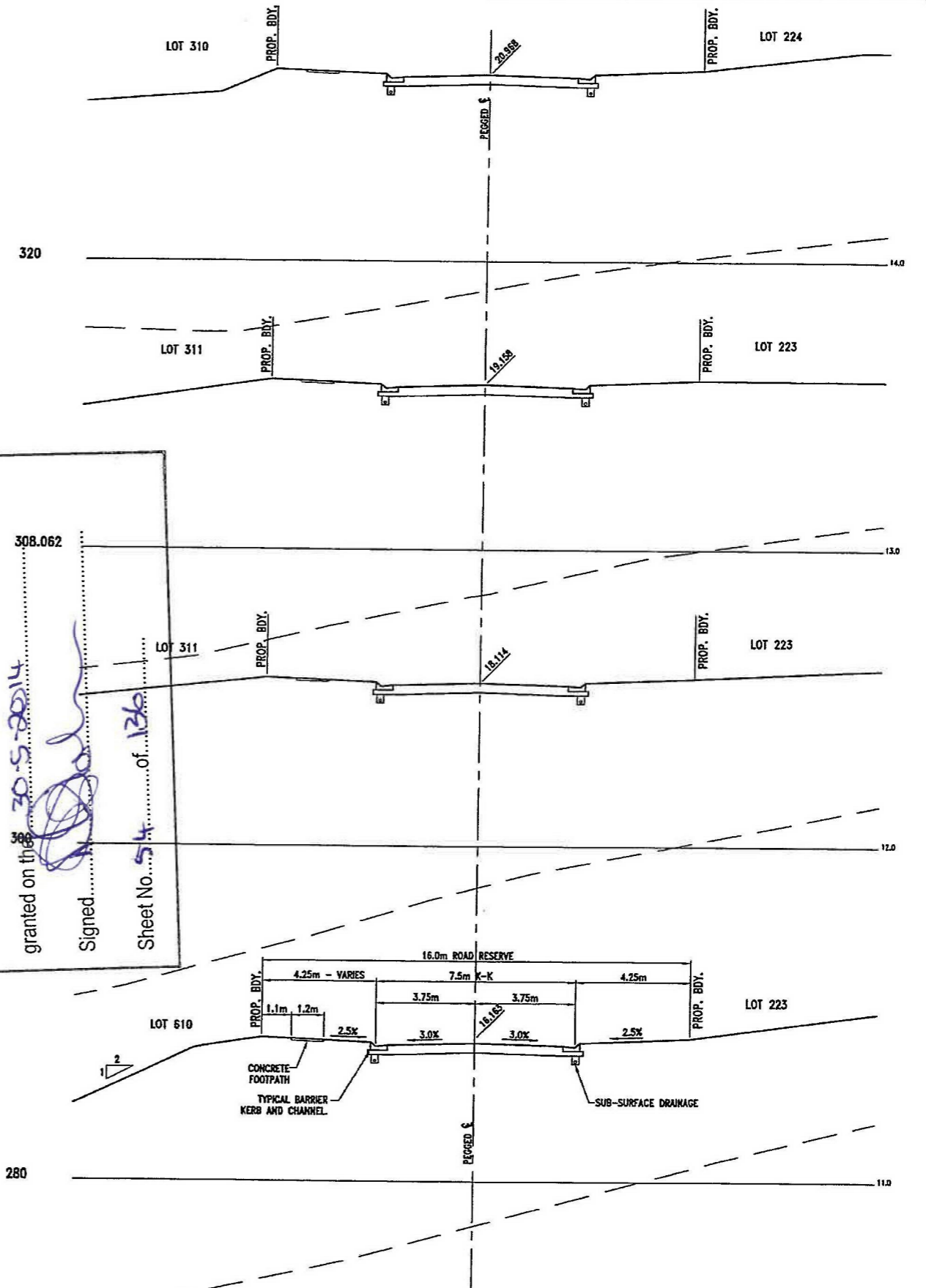
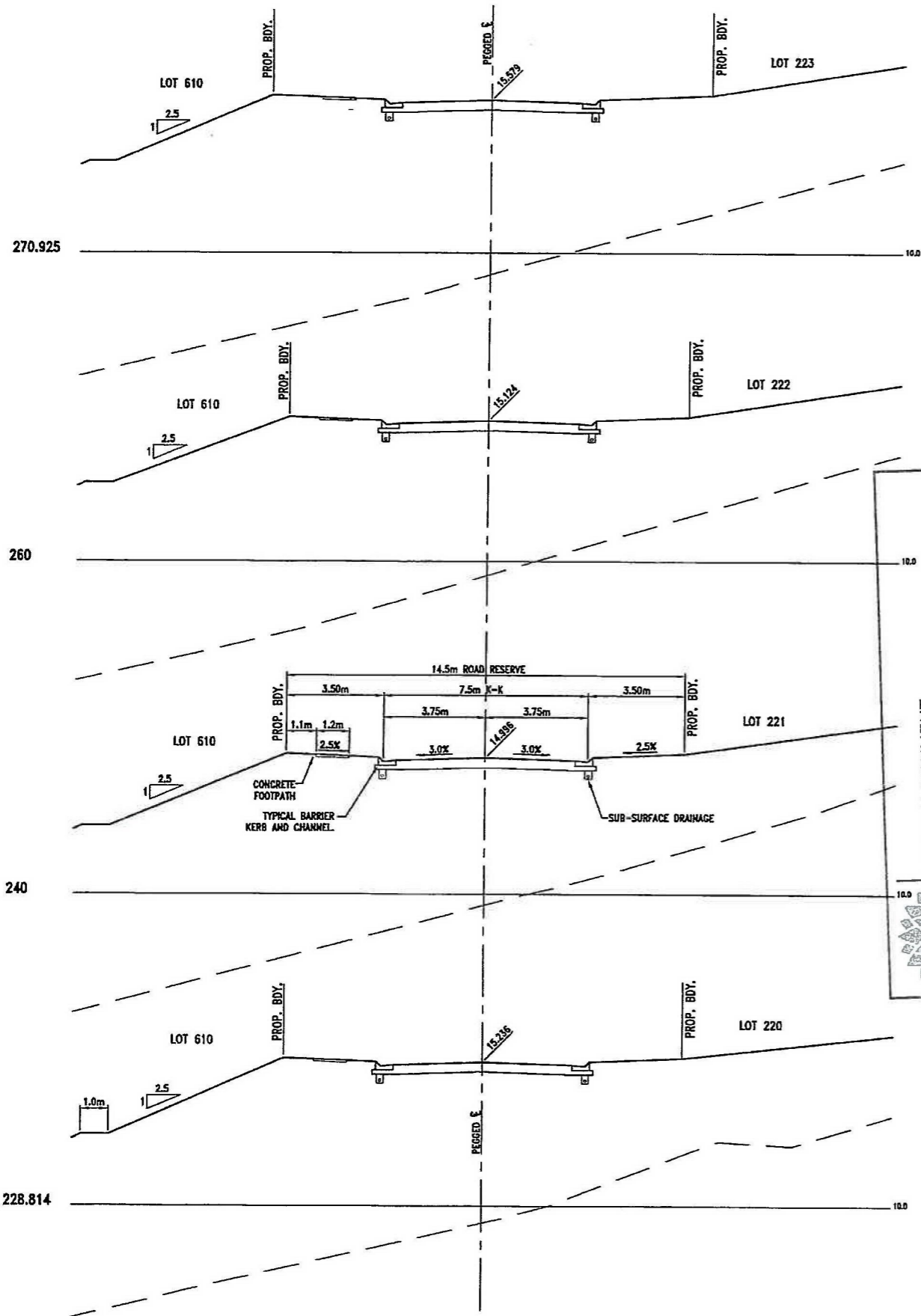
SK 3606
REVISION B

Bradford Lees Pty Ltd
ABN 29 064 159 191

Ph 07 5528 6411
Fax 07 5528 6422
Web www.bradlees.com.au
Email mail@bradlees.com.au
Postal PO Box 2293, Southport QLD 4215
Gold Coast Office Level 1, 34 Thomas Drive, Chevron Island QLD 4217

Bradlees
Civil Consulting

QUALITY ASSURED COMPANY
AS/NZS ISO 9001:2008
REG. NO. 233



NSW GOVERNMENT
Planning

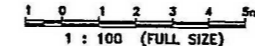
Issued under the Environmental Planning and Assessment Act 1979

Approved Application No. m89.0.166

granted on the 30.5.2014

Signed [Signature]

Sheet No. 54 of 136



NEWLAND DEVELOPERS PTY LTD

TERRANORA PRECINCT 1
ROAD 8 CROSS SECTIONS
SHEET 3 OF 4

09-374
07-01-2013

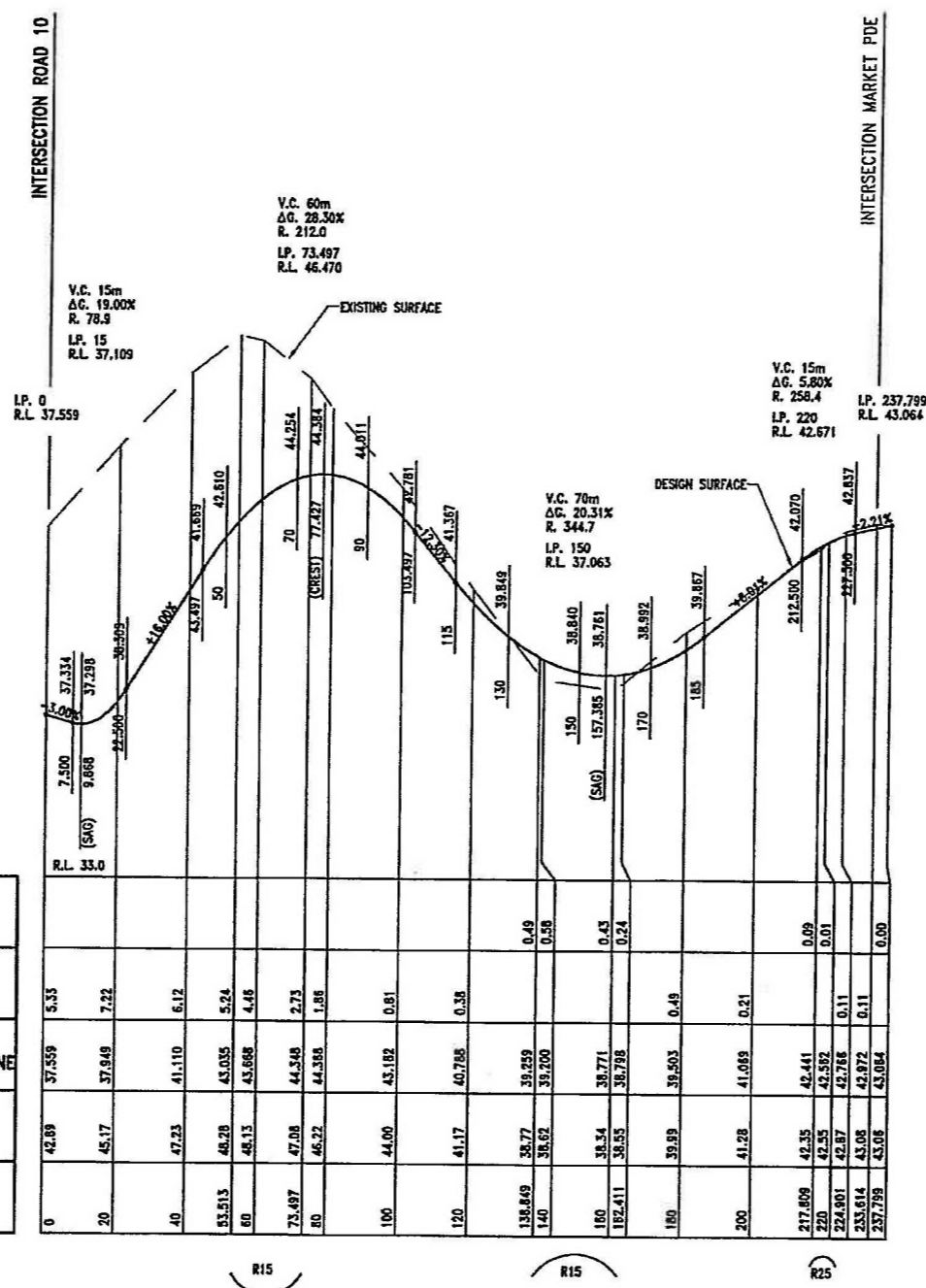
SK 3607
REVISION B

Bradford Lees Pty Ltd
ABN 29 064 159 191

PH 07 5528 6411
Fax 07 5528 6422
Web www.bradlees.com.au
Email mail@bradlees.com.au
Postal PO Box 2293, Southport QLD 4215
Gold Coast Office Level 1, 34 Thomas Drive, Chevron Island QLD 4217

Bradlees
Civil Consulting

ISO 9001
SCS QUALITY ASSURED COMPANY
AS/NZS ISO 9001:2008
REG. NO. 122

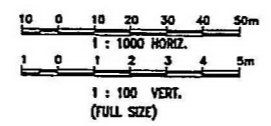


DATUM

HEIGHT OF FILL	DEPTH OF CUT	PAVEMENT LEVEL ON PEGGED CENTRELINE	EXISTING SURFACE LEVEL	PEGGED CHAINAGE
		37.559	42.89	0
		37.549	45.17	20
		41.110	47.23	40
		43.035	48.20	53.513
		43.668	48.13	60
		44.348	47.06	73.497
		44.388	46.22	80
		43.182	44.00	100
		40.788	41.17	120
		39.259	38.77	138.849
		39.200	38.62	140
		39.771	38.34	160
		38.798	36.55	182.411
		39.503	39.99	180
		41.083	41.28	200
		42.441	42.35	217.809
		42.592	42.55	220
		42.788	42.87	224.901
		42.972	43.08	233.614
		43.064	43.08	237.799

HORIZONTAL CURVE DATA

R15 R15 R25



NSW GOVERNMENT Planning

Issued under the Environmental Planning and Assessment Act 1979

Approved Application No... MP09-0166

granted on the 30-9-2014

Signed... *[Signature]*

Sheet No... 55 of 136

NEWLAND DEVELOPERS PTY LTD

09-374 07-01-2013

TERRANORA PRECINCT 1

ROAD 9

LONGITUDINAL SECTION

SK 3608

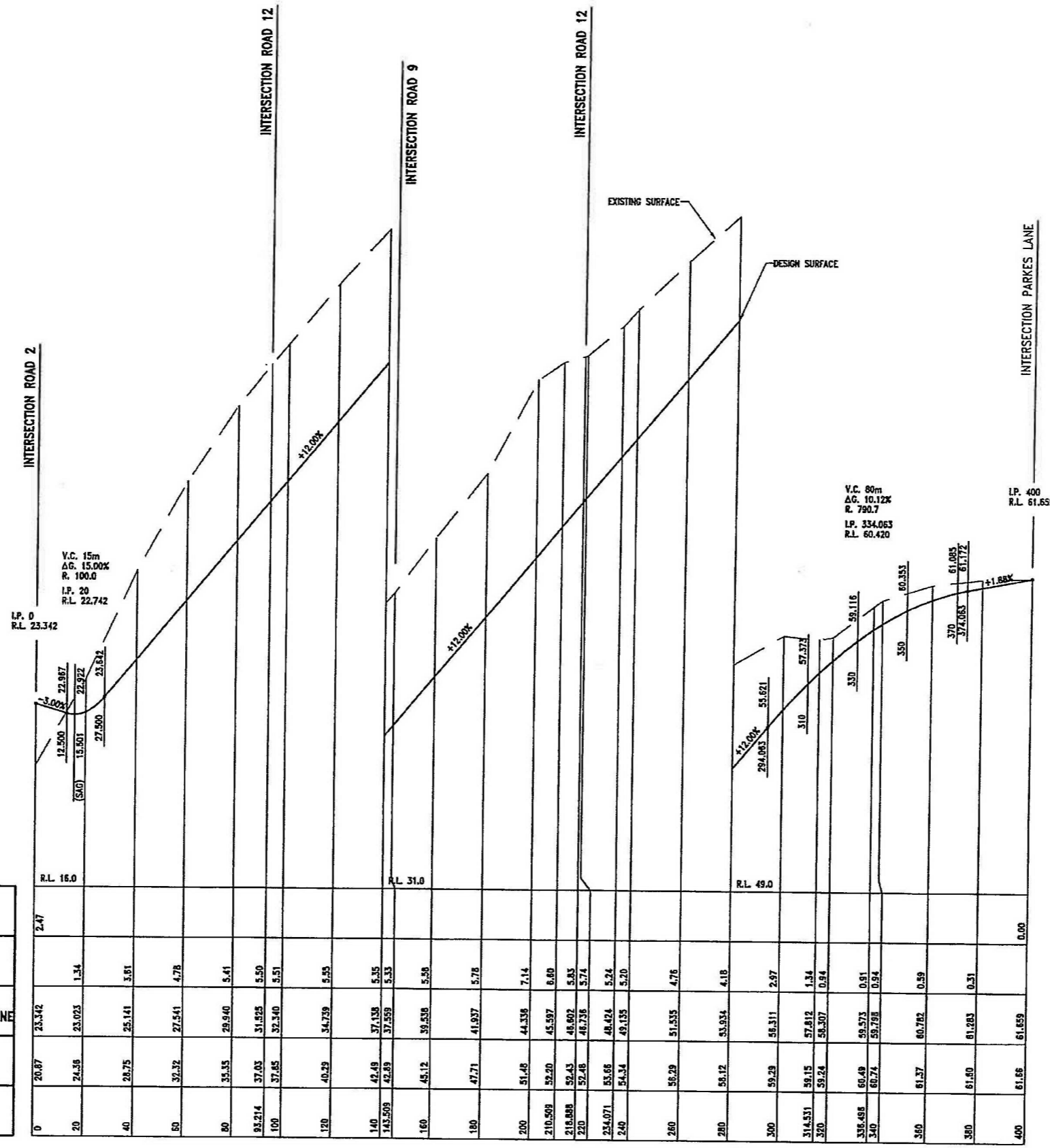
REVISION B

Bradford Lees Pty Ltd
ABN 29 064 159 191

Ph 07 5528 6411
Fax 07 5528 6422
Web www.bradlees.com.au
Email mail@bradlees.com.au
Postal PO Box 2293, Southport QLD 4215
Gold Coast Office Level 1, 34 Thomas Drive, Chevron Island QLD 4217

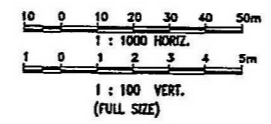
Bradlees
Civil Consulting

QUALITY ASSURED COMPANY
AS/NZS ISO 9001:2008
REG. NO. 23



DATUM	HEIGHT OF FILL	DEPTH OF CUT	PAVEMENT LEVEL ON PEGGED CENTRELINE	EXISTING SURFACE LEVEL	PEGGED CHAINAGE
R.L. 16.0	2.47		23.342	20.87	0
		1.34	23.023	24.36	20
		3.61	25.141	28.75	40
		4.76	27.541	32.32	60
		5.41	29.940	35.53	80
		5.50	31.625	37.03	95.214
		5.51	32.340	37.85	100
		5.55	34.729	40.29	120
		5.35	37.138	42.48	140
		5.33	37.559	42.89	143.509
		5.58	39.538	45.12	160
		5.78	41.937	47.71	180
		7.14	44.536	51.46	200
		6.80	45.597	52.20	210.509
		5.83	46.602	52.43	216.888
		5.74	46.735	52.46	220
		5.24	48.424	53.66	234.071
		5.20	49.135	54.34	240
		4.76	51.535	56.29	260
		4.18	53.534	56.12	280
		2.97	56.311	59.29	300
		1.34	57.812	59.15	314.531
		0.94	58.307	59.24	320
		0.91	59.573	60.49	336.488
		0.94	59.798	60.74	340
		0.59	60.782	61.37	360
		0.31	61.283	61.60	380
	0.00		61.659	61.66	400

HORIZONTAL CURVE DATA



NEWLAND DEVELOPERS PTY LTD
 09-374
 07-01-2013

TERRANORA PRECINCT 1
 ROAD 10
 LONGITUDINAL SECTION

SK 3609
 REVISION B

NSW GOVERNMENT
 Planning

Issued under the Environmental Planning and Assessment Act 1979

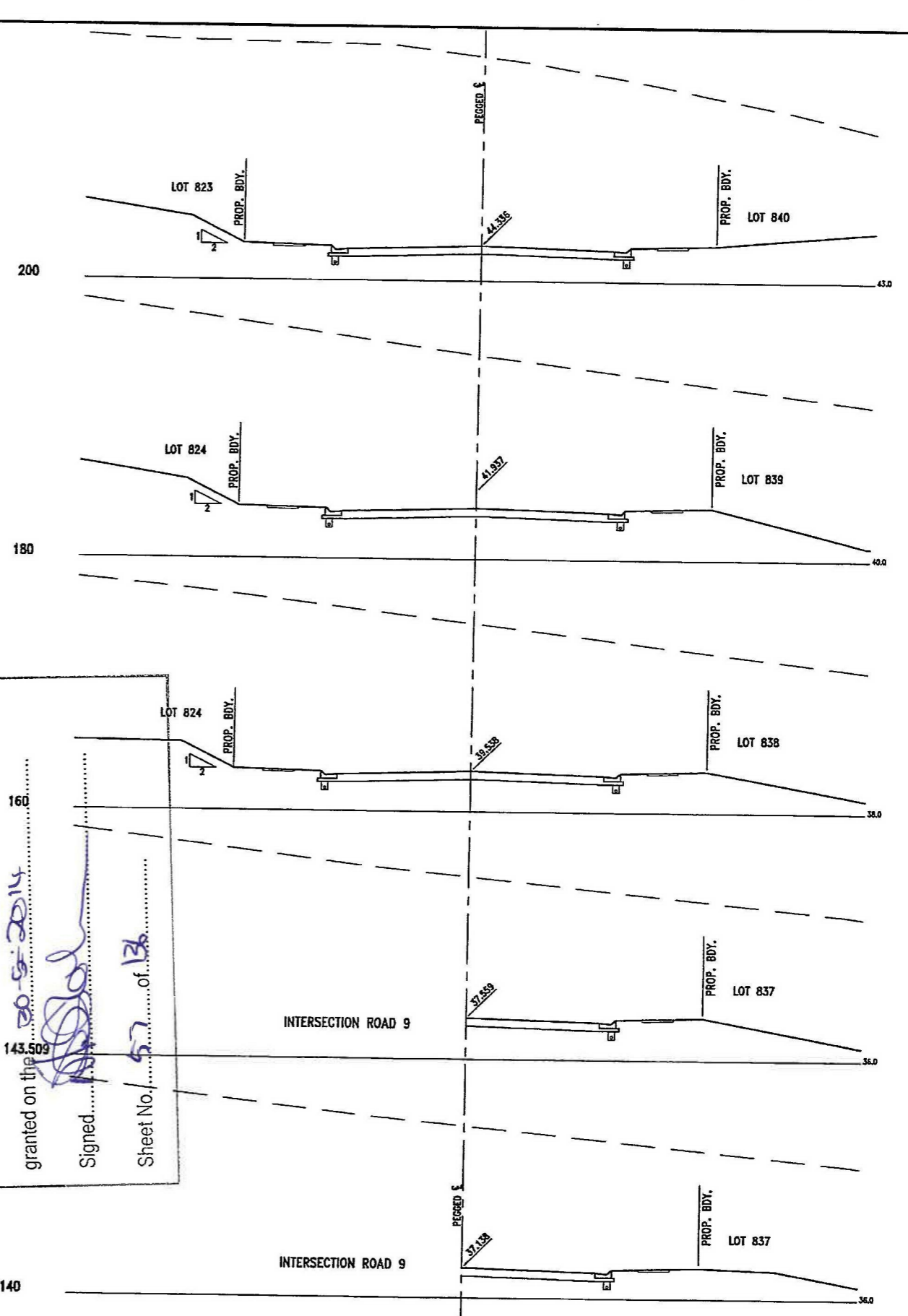
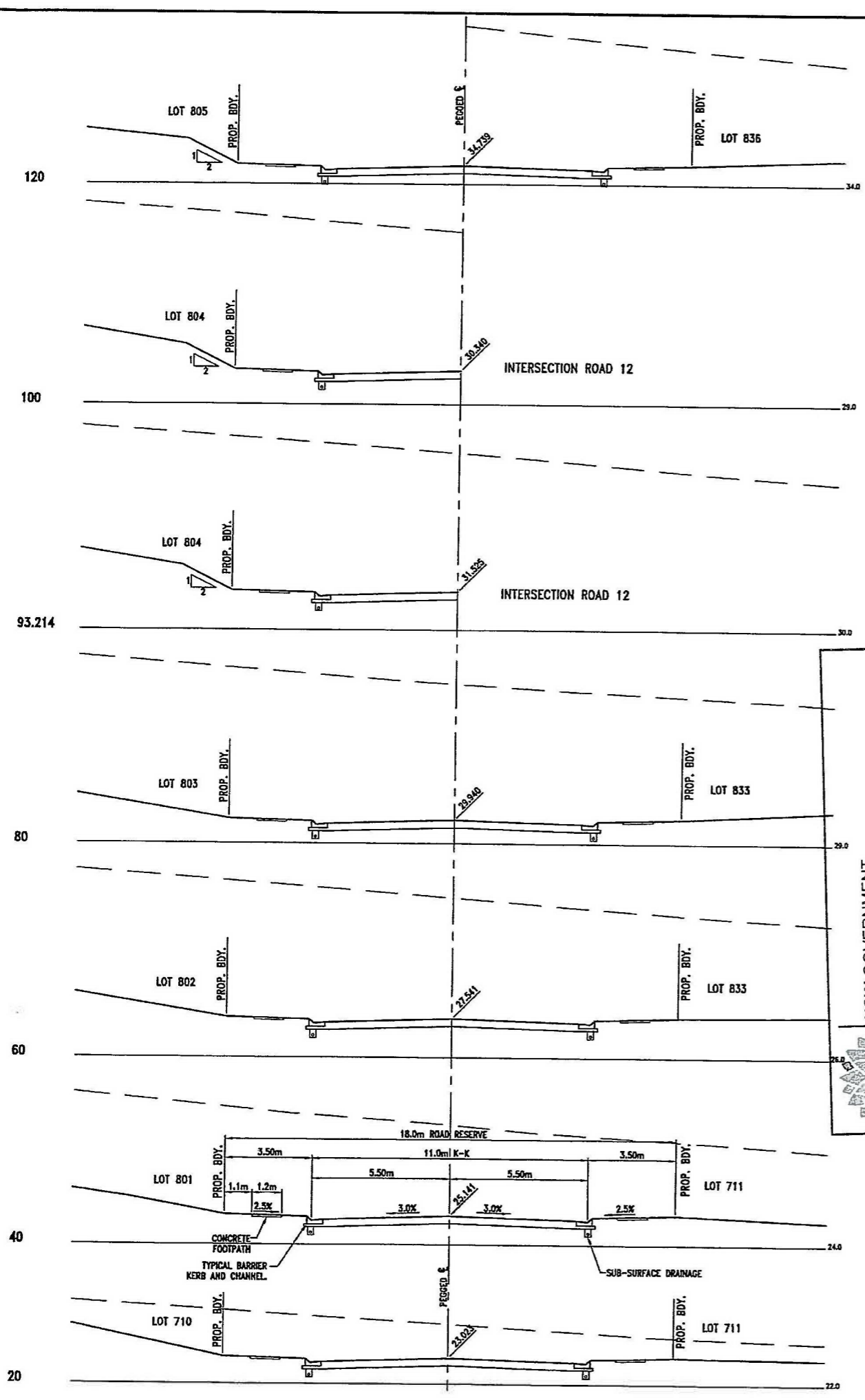
Approved Application No. **MPO/2014/66**
 granted on the **30-9-2014**
 Signed.....
 Sheet No. **56** of **136**

Bradford Lees Pty Ltd
 ABN 29 064 159 191

Bradlees
 Civil Consulting

Ph 07 5528 6411
 Fax 07 5528 6422
 Web www.bradlees.com.au
 Email mail@bradlees.com.au
 Postal PO Box 2293, Southport QLD 4215
 Gold Coast Office Level 1, 34 Thomas Drive, Chevron Island QLD 4217

QUALITY ASSURED COMPANY
 AUSTRALIAN STANDARD
 AS/NZS 9001:2008



NSW GOVERNMENT
Planning

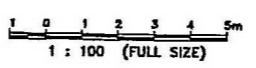
Issued under the Environmental Planning and Assessment Act 1979

Approved Application No. 10051-0166

granted on the 30-5-2014

Signed [Signature]

Sheet No. 57 of 136

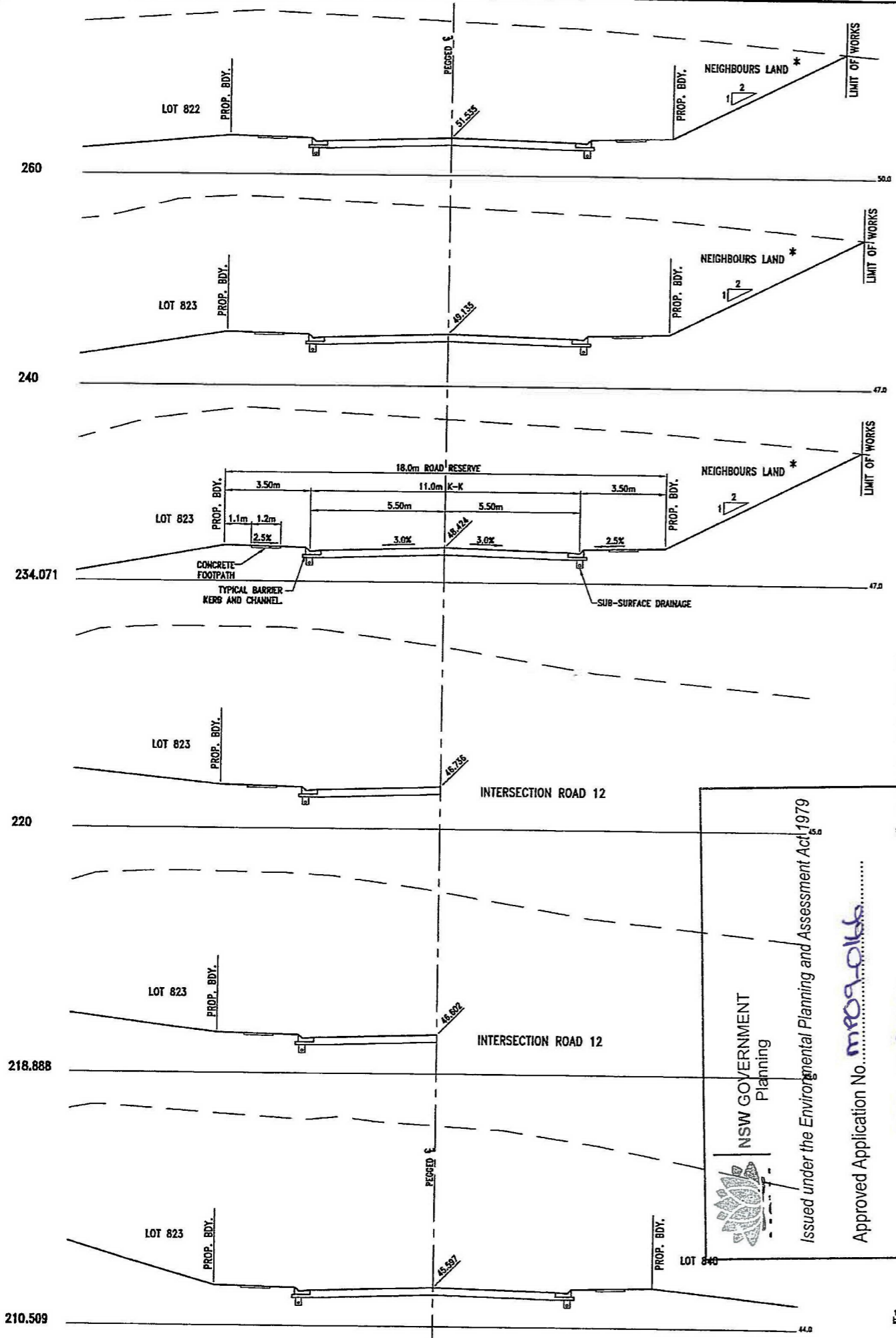


NEWLAND DEVELOPERS PTY LTD	09-374 07-01-2013
TERRANORA PRECINCT 1 ROAD 10 CROSS SECTIONS SHEET 1 OF 2	SK 3610 REVISION B

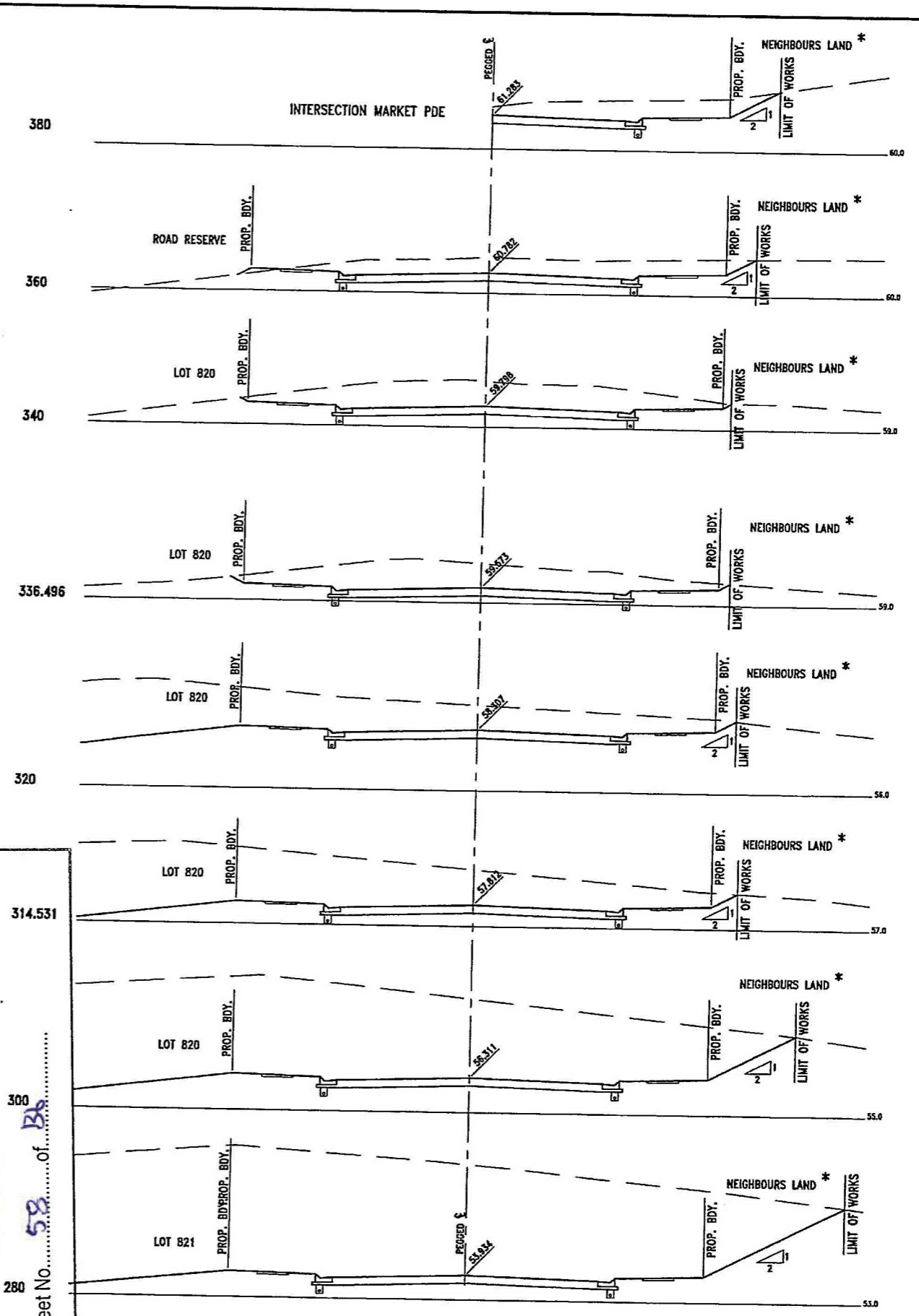
Bradford Lees Pty Ltd
ABN 29 064 159 191

Ph 07 5528 6411
Fax 07 5528 6422
Web www.bradlees.com.au
Email mail@bradlees.com.au
Postal PO Box 2293, Southport QLD 4215
Gold Coast Office Level 1, 34 Thomas Drive, Chevron Island QLD 4217

Bradlees
Civil Consulting



* BATTER TO EXISTING NEIGHBOURS LAND AT OWNERS CONSENT



* BATTER TO EXISTING NEIGHBOURS LAND AT OWNERS CONSENT

NSW GOVERNMENT
Planning

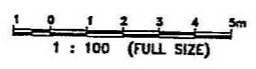
Issued under the Environmental Planning and Assessment Act 1979

Approved Application No. m109-0166

granted on the 30-5-2014

Signed [Signature]

Sheet No. 58 of 136



NEWLAND DEVELOPERS PTY LTD

TERRANORA PRECINCT 1

ROAD 10 CROSS SECTIONS

SHEET 2 OF 2

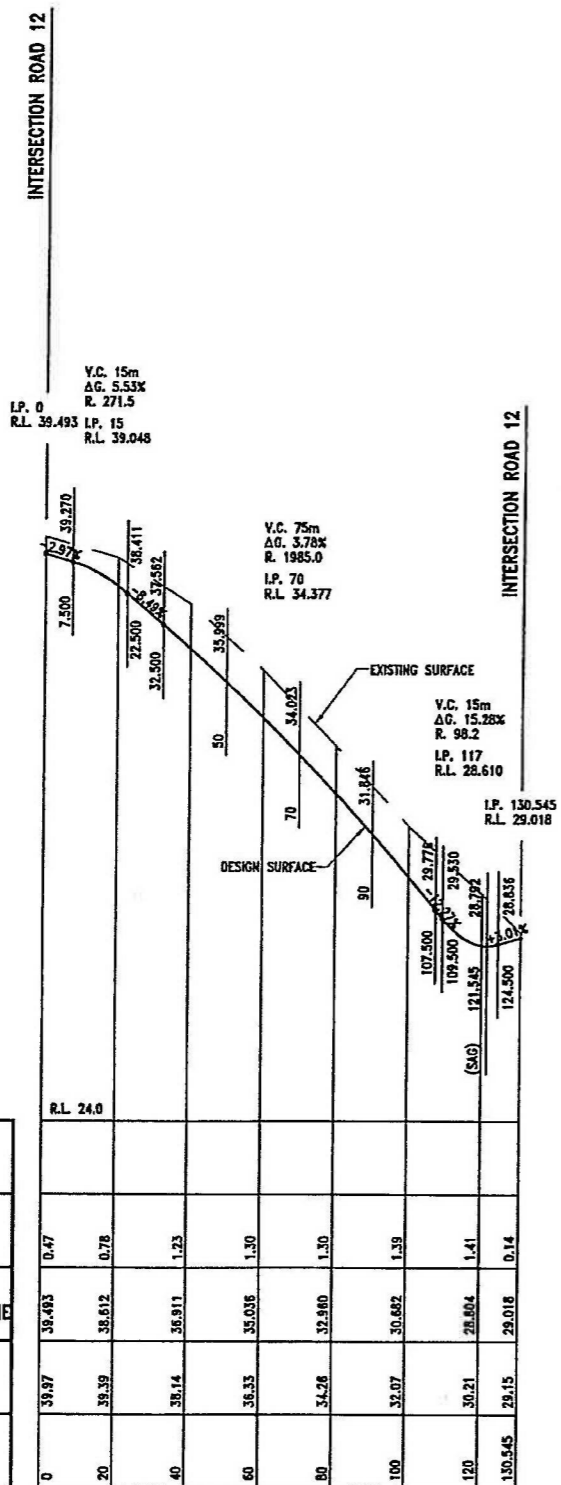
09-374
07-01-2013

SK 3611
REVISION B

Bradford Lees Pty Ltd
ABN 29 054 153 191

Ph 07 5528 6411
Fax 07 5528 6422
Web www.bradlees.com.au
Email mail@bradlees.com.au
Postal PO Box 2293, Southport QLD 4215
Gold Coast Office Level 1, 34 Thomas Drive, Chevron Island QLD 4217

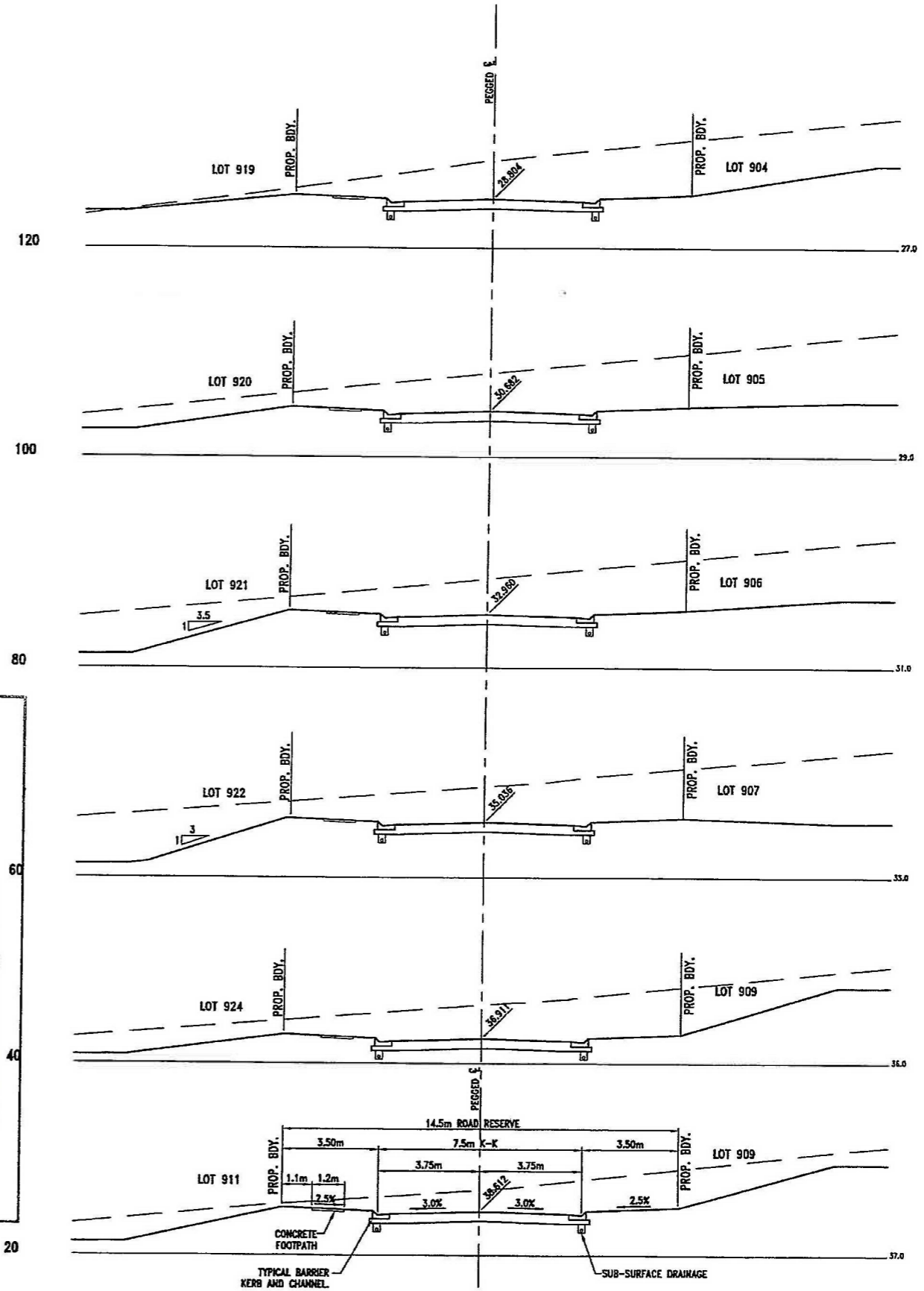
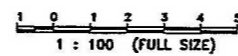
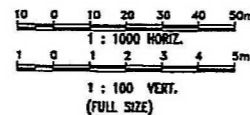




DATUM	R.L. 24.0	0	20	40	60	80	100	120	130.545
HEIGHT OF FILL									
DEPTH OF CUT		0.47	0.76	1.23	1.30	1.30	1.39	1.41	0.14
PAVEMENT LEVEL ON PEGGED CENTRELINE		38.493	38.612	38.911	35.036	32.980	30.682	28.804	29.018
EXISTING SURFACE LEVEL		39.97	39.39	38.14	36.35	34.28	32.07	30.21	29.15
PEGGED CHAINAGE		0	20	40	60	80	100	120	130.545

HORIZONTAL CURVE DATA

NSW GOVERNMENT Planning
 Issued under the Environmental Planning and Assessment Act 1979
 Approved Application No. MPO9-0166
 granted on the 30-9-2014
 Signed: [Signature]
 Sheet No. 59 of 136



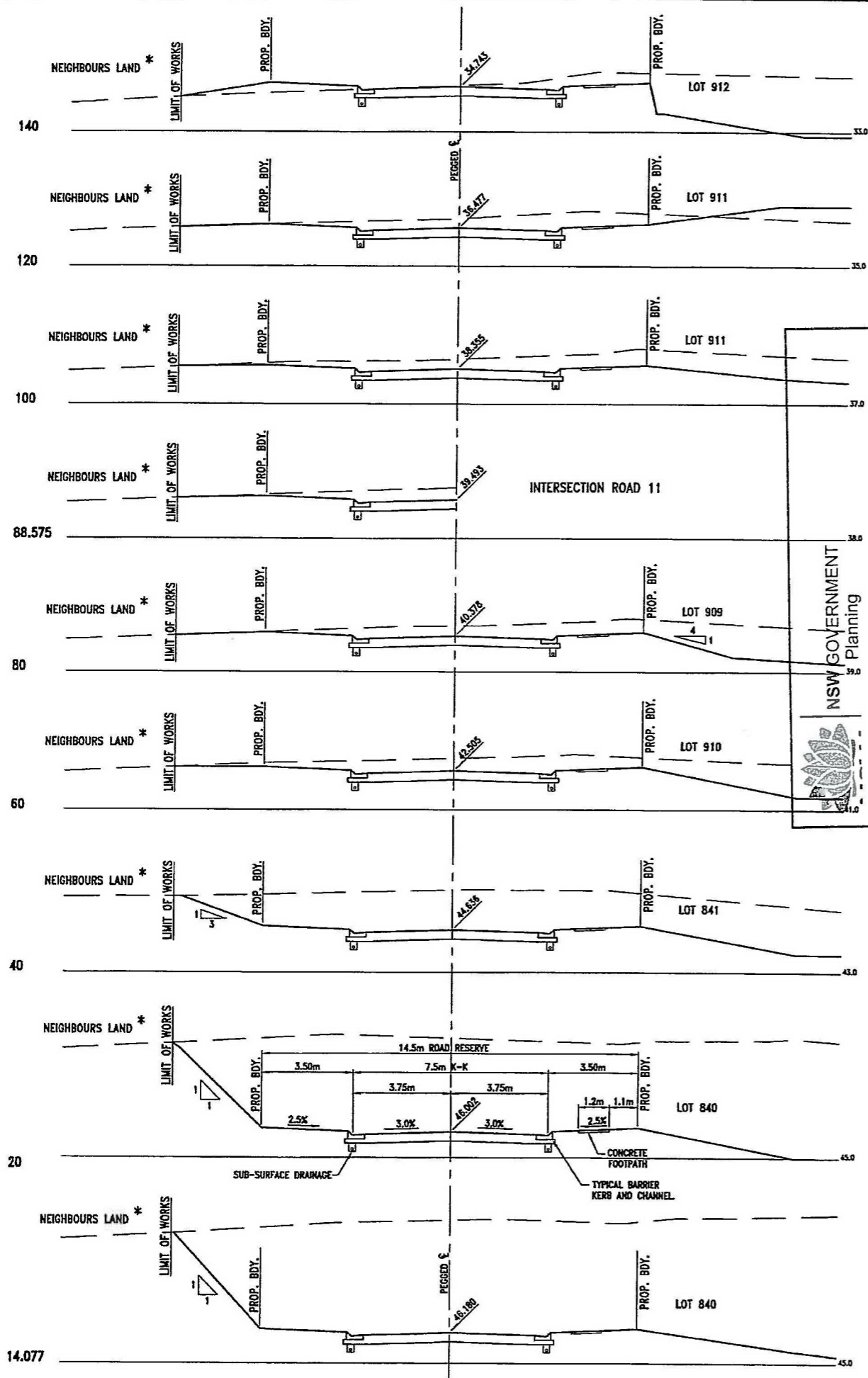
NEWLAND DEVELOPERS PTY LTD
 TERRANORA PRECINCT 1
 ROAD 11 LONGITUDINAL AND CROSS SECTIONS

09-374
 07-01-2013
 SK 3612
 REVISION B

Bradford Lees Pty Ltd
 ABN 29 064 159 191
 Ph 07 5528 6411
 Fax 07 5528 6422
 Web www.bradlees.com.au
 Email mail@bradlees.com.au
 Postal PO Box 2293, Southport QLD 4215
 Gold Coast Office Level 1, 34 Thomas Drive, Chevron Island QLD 4217




* BATTER TO EXISTING NEIGHBOURS LAND AT OWNERS CONSENT

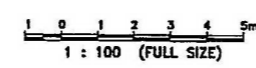
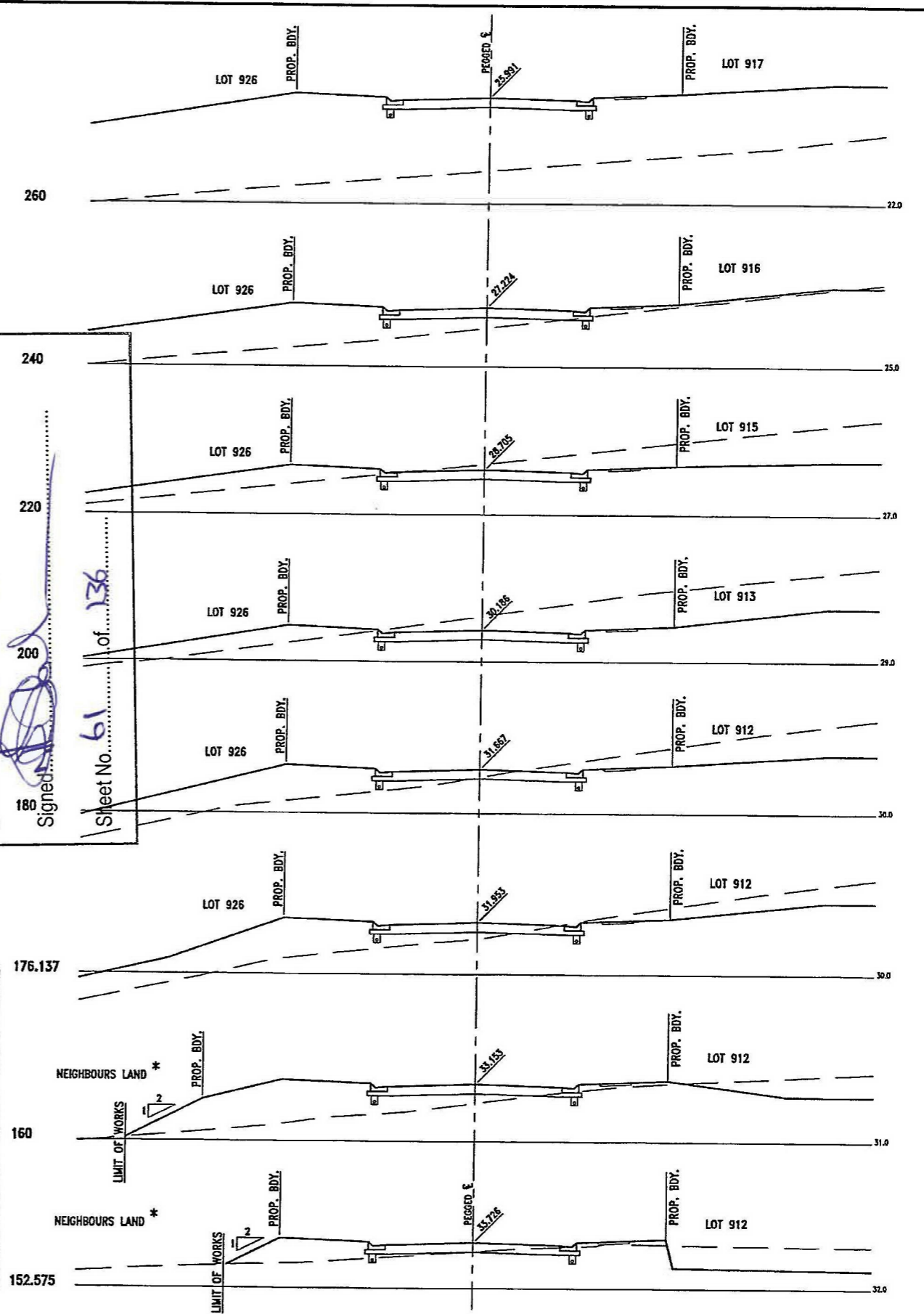


NSW GOVERNMENT
Planning

Issued under the Environmental Planning and Assessment Act 1979

Approved Application No. M209-016
granted on the 30-5-2014
Signed: 
Sheet No. 61 of 136

* BATTER TO EXISTING NEIGHBOURS LAND AT OWNERS CONSENT



NEWLAND DEVELOPERS PTY LTD
09-374
07-01-2013

TERRANORA PRECINCT 1
ROAD 12 CROSS SECTIONS
SHEET 1 OF 2

SK 3614
REVISION B

Bradford Lees Pty Ltd
ABN 29 054 159 191
Ph 07 5528 6411
Fax 07 5528 6422
Web www.bradlees.com.au
Email mail@bradlees.com.au
Postal PO Box 2293, Southport QLD 4215
Gold Coast Office Level 1, 34 Thomas Drive, Chevron Island QLD 4217

Bradlees
Civil Consulting

