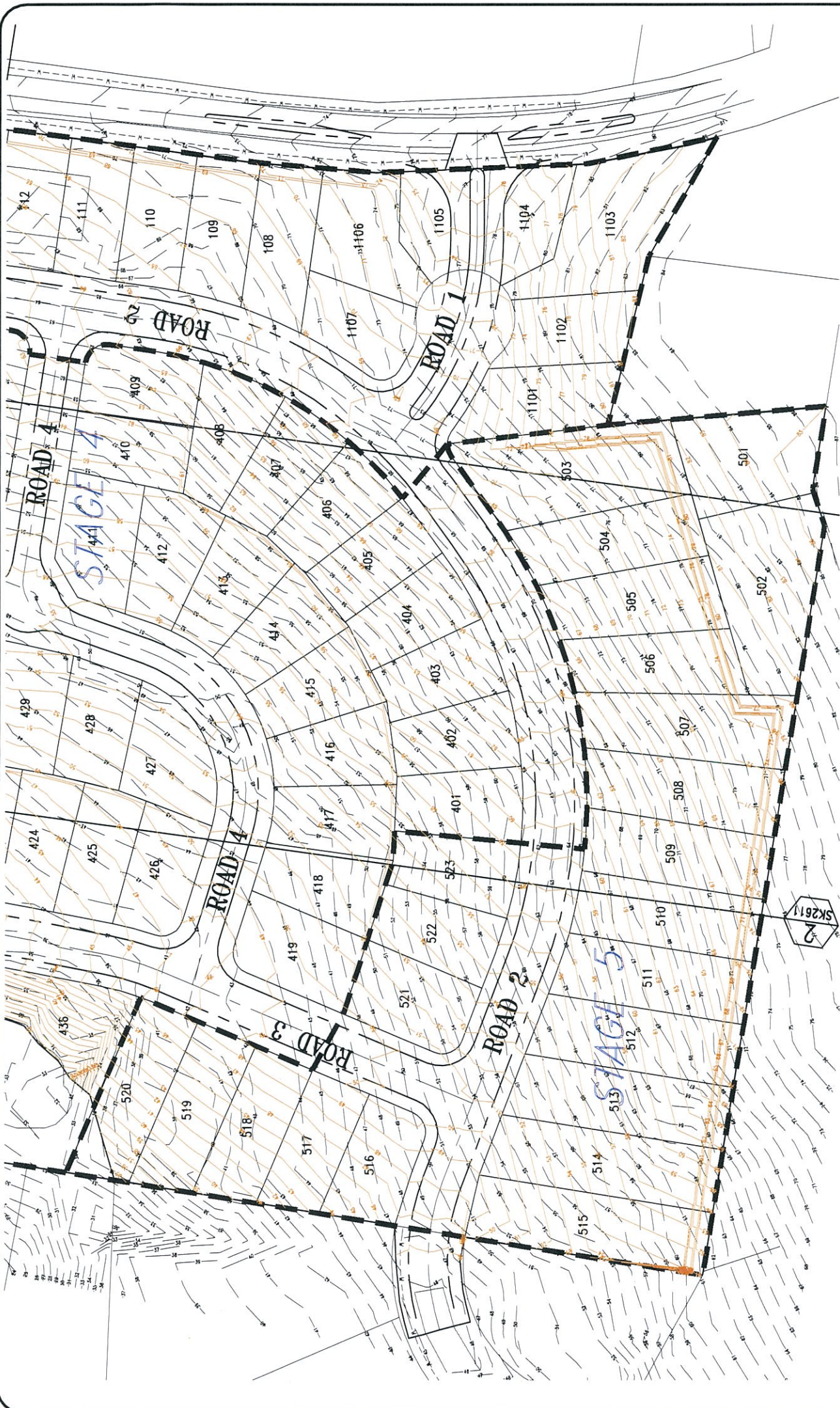


LEGEND

- 12 --- EXISTING SURFACE CONTOURS
- 10 --- BOXED OUT DESIGN SURFACE CONTOURS
- STAGE BOUNDARY

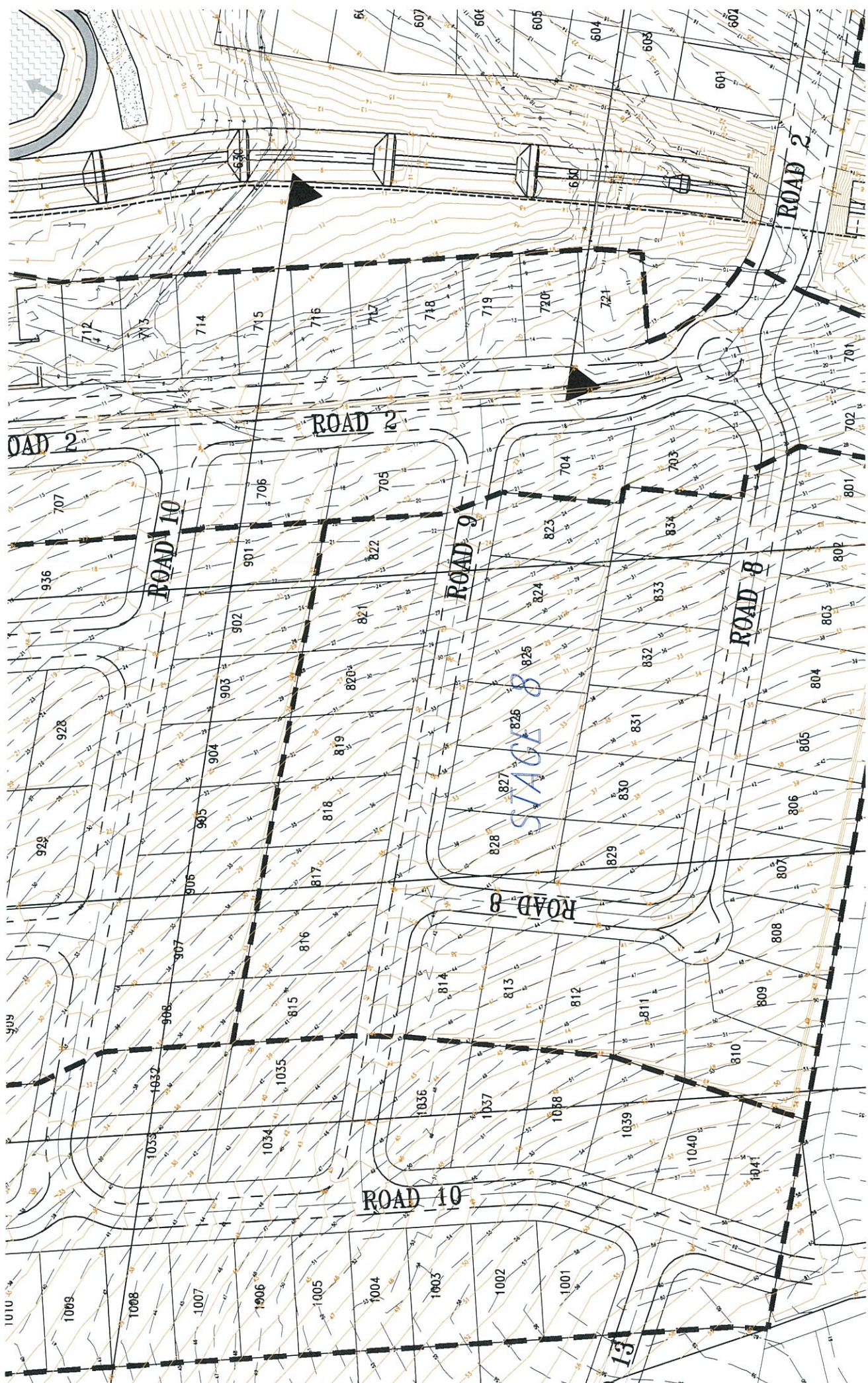
0 5 10 15 20 25m
 1 : 500 (FULL SIZE)



LEGEND

- EXISTING SURFACE CONTOURS
- BOXED OUT DESIGN SURFACE CONTOURS
- STAGE BOUNDARY

0 5 10 15 20 25m
 1 : 500 (FULL SIZE)

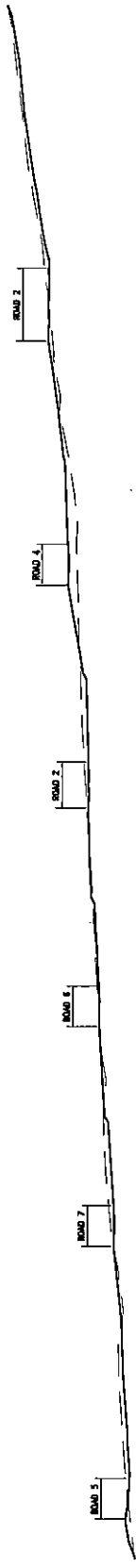


D.A. PROJECT APPL. No. MP09-0166 SK2708
 09-374 17-11-2008 REVISION B
BradLees
 CONSULTING

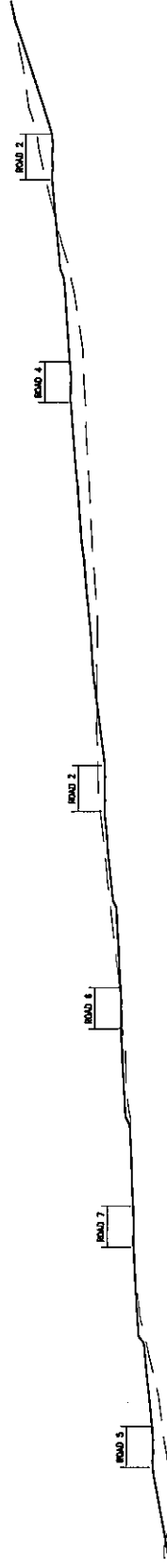
METRICON (QLD) PTY LTD
 ALTITUDE 1 - FRASER DRY, TERRANORA
 EARTHWORKS LAYOUT
 SHEET 5 OF 5

- LEGEND**
- EXISTING SURFACE CONTOURS
 - BOXED OUT DESIGN SURFACE CONTOURS
 - STAGE BOUNDARY





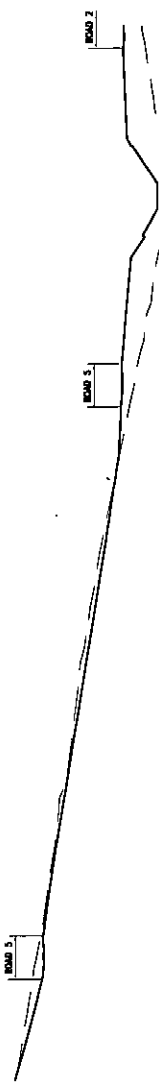
SECTION 1
SCALE 1:500



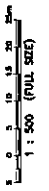
SECTION 2
SCALE 1:500




SECTION 3
SCALE 1:500

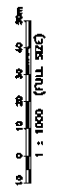
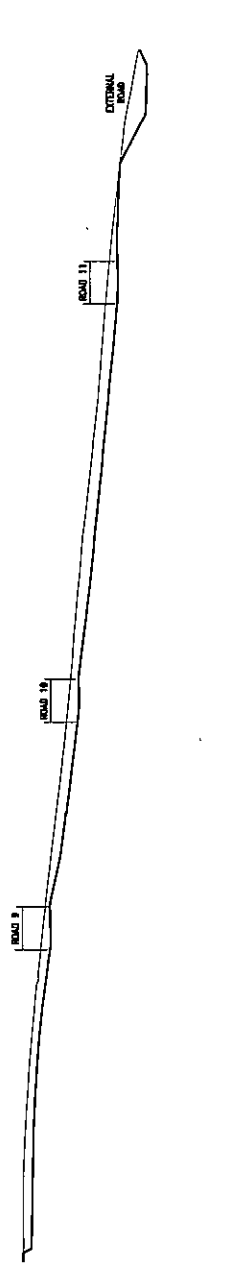
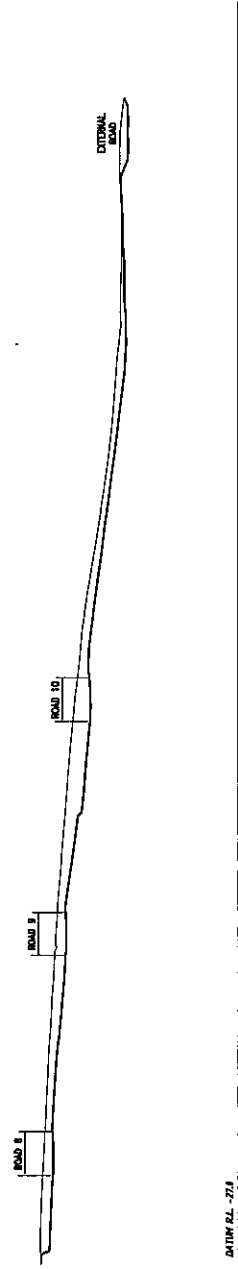
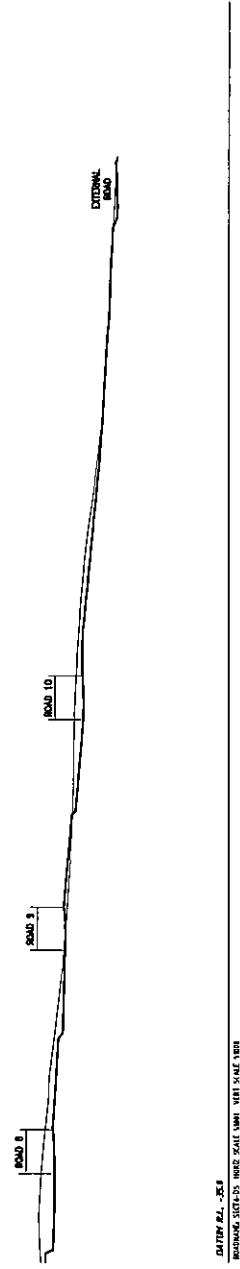
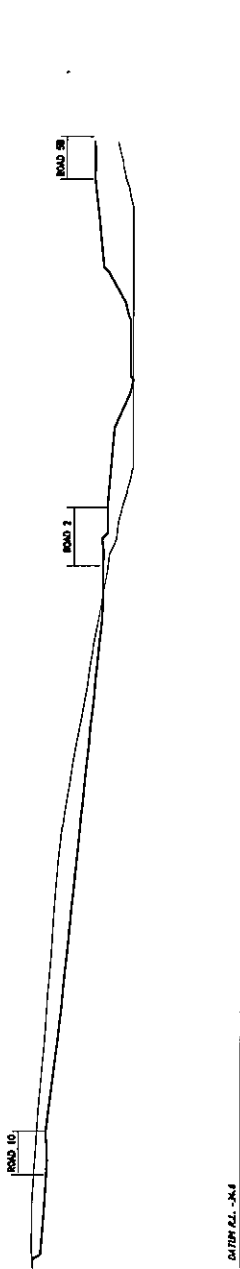


SECTION 4
SCALE 1:500



METRICON (QLD) PTY LTD
 ALTITUDE 1 - FRASER DRY, TERRANORA
 EARTHWORKS SECTIONS
 SHEET 1 OF 2

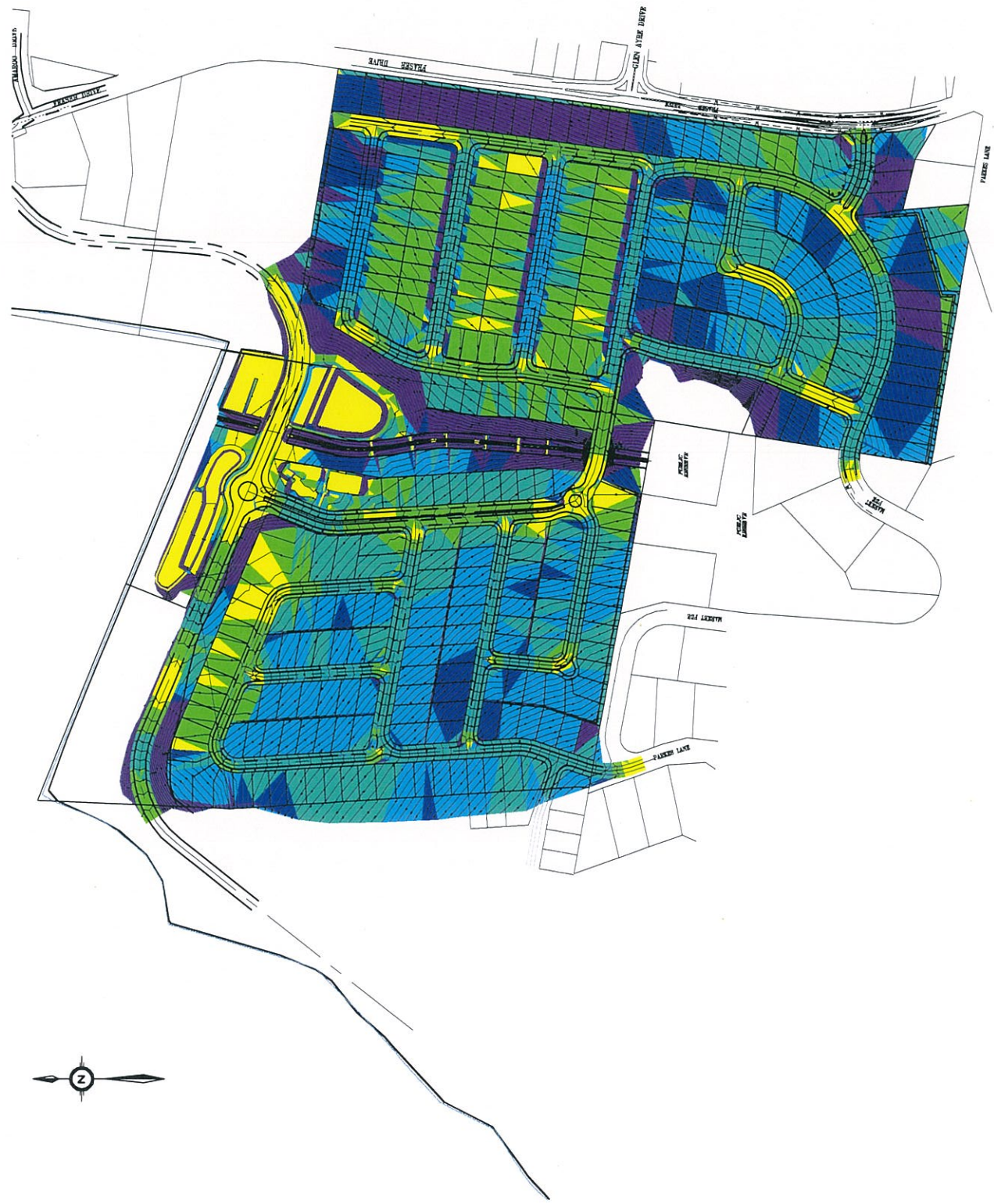
D.A. PROJECT APPL. No. MP09-0166	SK2709	
09-374	REVISION A	
30-04-2010		



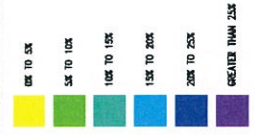
METRICON (QLD) PTY LTD ALTITUDE 1 - FRASER DRY, TERRANORA EARTHWORKS SECTIONS SHEET 2 OF 2		D.A. PROJECT APPL. No. MP09-0166 09-374 30-0-0-2010	SK2710 REVISION A

APPENDIX 3

- 09-374 – SK2711 Slope Analysis Plan
- 09-374 – SK2712 Preliminary Retaining Wall Plan



SLOPE ANALYSIS LEGEND



D.A. PROJECT APPL. No. MP09-0166 **SK2711**
 09-374 REVISION C
 01-12-2010
BradLees
 CONSULTING

METRICON (QLD) PTY LTD
ALTITUDE 1 - FRASER DRV. TERRANORA
SLOPE ANALYSIS

APPENDIX 4

- 09-374 – SK2713 Road Layout Plan: Sheet 1 of 2
- 09-374 – SK2714 Road Layout Plan: Sheet 2 of 2
- 09-374 – SK2715 Road 2 Longitudinal Section
- 09-374 – SK2716 Road 1 & Road 2 Longitudinal Section
- 09-374 – SK2717 Road 3 & Road 4 Longitudinal Section
- 09-374 – SK2718 Road 5 Longitudinal Section: Sheet 1 of 2
- 09-374 – SK2719 Road 5 Longitudinal Section: Sheet 2 of 2
- 09-374 – SK2720 Road 6 & Road 7 Longitudinal Section
- 09-374 – SK2721 Road 8 & Road 9 Longitudinal Section
- 09-374 – SK2722 Road 10 Longitudinal Section
- 09-374 – SK2723 Road 11 Longitudinal Section
- 09-374 – SK2724 Road 12 Longitudinal Section
- 09-374 – SK2725 Road 13 Longitudinal Section
- 09-374 – SK2726 Road 1 & Road 3 Cross Sections
- 09-374 – SK2727 Road 2 Cross Sections: Sheet 1 of 2
- 09-374 – SK2728 Road 2 Cross Sections: Sheet 2 of 2
- 09-374 – SK2729 Road 4 & Road 5A Cross Sections
- 09-374 – SK2730 Road 5B Cross Sections
- 09-374 – SK2731 Road 6 & Road 7 Cross Sections
- 09-374 – SK2732 Road 8 & Road 9 Cross Sections
- 09-374 – SK2733 Road 10 Cross Sections
- 09-374 – SK2734 Road 11 & Road 12 Cross Sections