



GLEN AYRE DRIVE

FRASER DRIVE

EXISTING #100 WATERMAIN

EXISTING #100 WATERMAIN

EXISTING #100 WATERMAIN

EXISTING #100 WATERMAIN

EXISTING #100 WATERMAIN

EXISTING #100 WATERMAIN

EXISTING #100 WATERMAIN

EXISTING #100 WATERMAIN

INTERIM WATERMAIN CONNECTION FROM EXISTING #100 WATERMAIN. (FROM BAYLES (SML) RESERVOIR. CONNECTION TO REMAIN IN PLACE UNTIL CONSTRUCTION OF NEW SML RESERVOIR AS PART OF PRECINCT 2 DEVELOPMENT.

INTERIM WATERMAIN CONNECTION FROM EXISTING #100 WATERMAIN. (FROM BAYLES (SML) RESERVOIR.

EXISTING LAKE

PUBLIC RESERVE

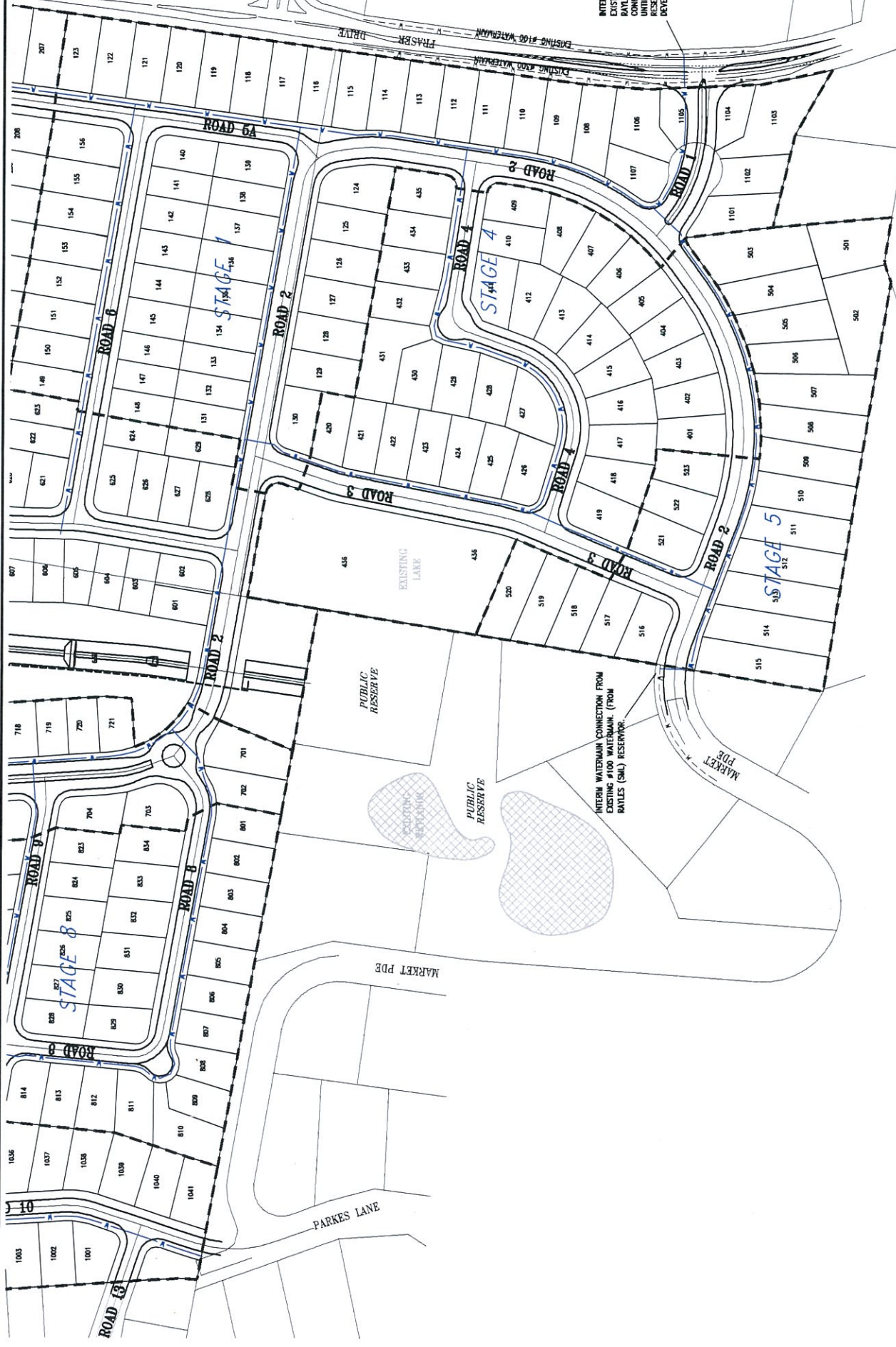
EXISTING LAKE

PUBLIC RESERVE

MARKET PDE

PARKES LANE

PARKES LANE



D.A. PROJECT APPL. No. MPO9-0166 SK2739
09-374 REVISION B 17-11-2010



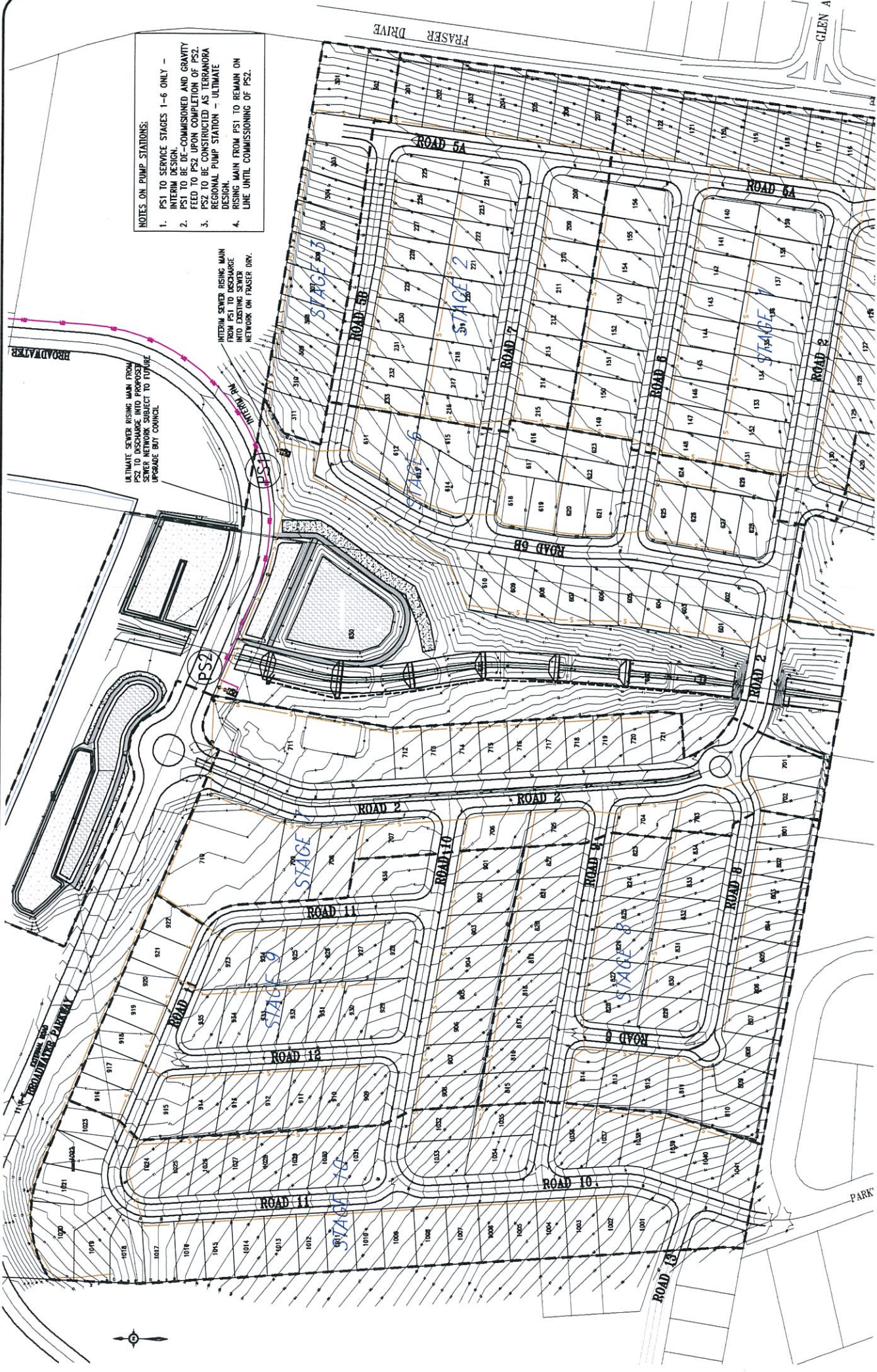
METRICON (OLD) PTY LTD
ALTITUDE 1 - FRASER DRV, TERRANORA
WATER LAYOUT
SHEET 2 OF 2



- NOTES ON PUMP STATIONS:**
1. PS1 TO SERVICE STAGES 1-6 ONLY - INTERIM DESIGN - COMMISSIONED AND GRAVITY FED TO PS2 UPON COMPLETION OF PS2.
 2. PS2 TO SERVICE STAGES 7-10 ONLY - INTERIM DESIGN - COMMISSIONED AND GRAVITY FED TO PS1 UPON COMPLETION OF PS1.
 3. PS1 AND PS2 TO BE CONSTRUCTED AS TERRANORA REGIONAL PUMP STATION - ULTIMATE DESIGN.
 4. RISING MAIN FROM PS1 TO REMAIN ON LINE UNTIL COMMISSIONING OF PS2.

ULTIMATE SEWER RISING MAIN FROM PS2 TO DISCHARGE INTO PROPOSED SEWER NETWORK SUBJECT TO FUTURE UPGRADE BY COUNCIL

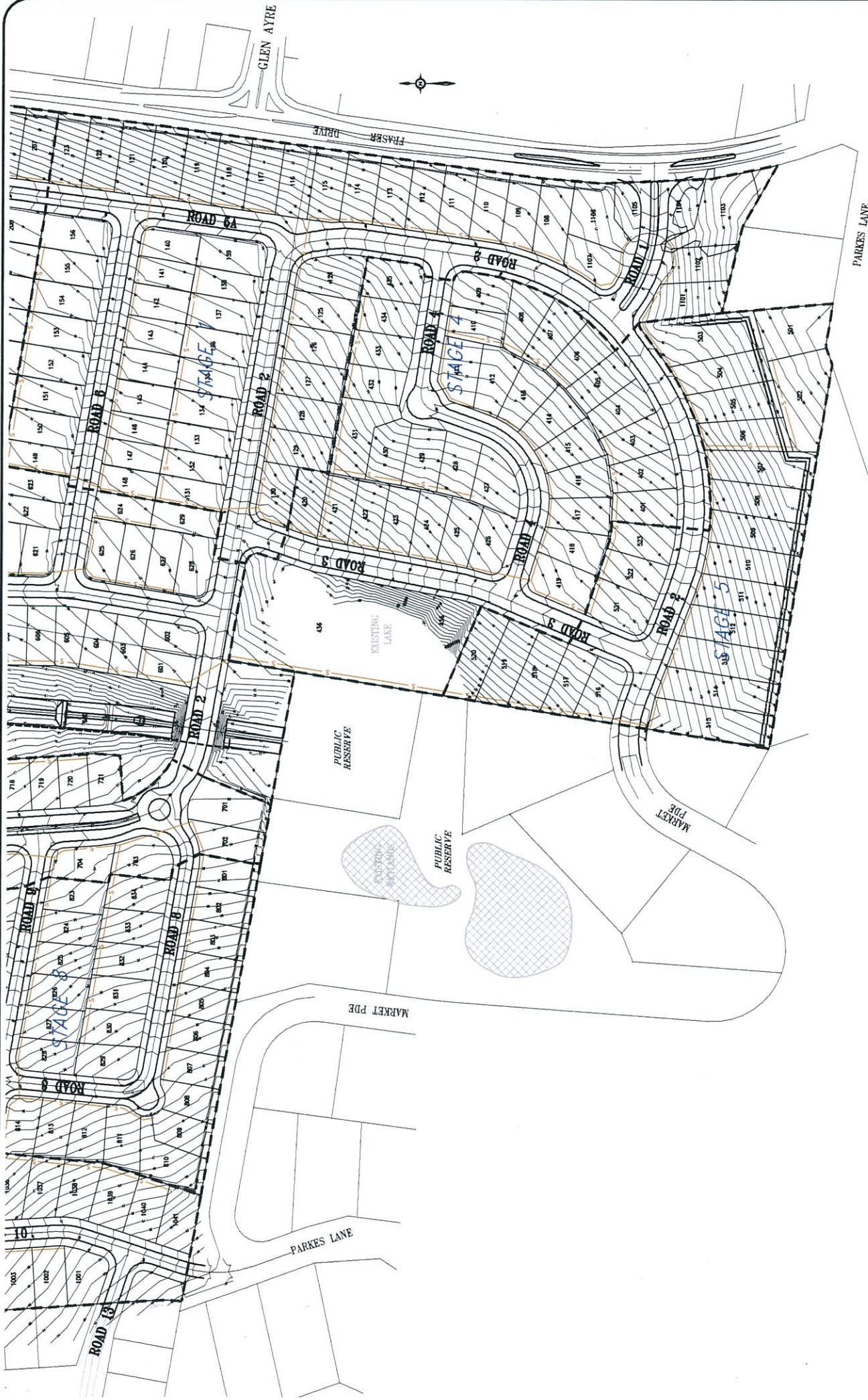
INTERIM SEWER RISING MAIN FROM PS1 TO DISCHARGE INTO EXISTING SEWER NETWORK ON FRASER DRV.



D.A. PROJECT APPL. No. MP09-0166 SK27 40
 09-374 17-11-2010 REVISION B
BradLees
 CONSULTING

METRICON (QLD) PTY LTD
 ALTITUDE 1 - FRASER DRV, TERRANORA
 SEWER LAYOUT
 SHEET 1 OF 2

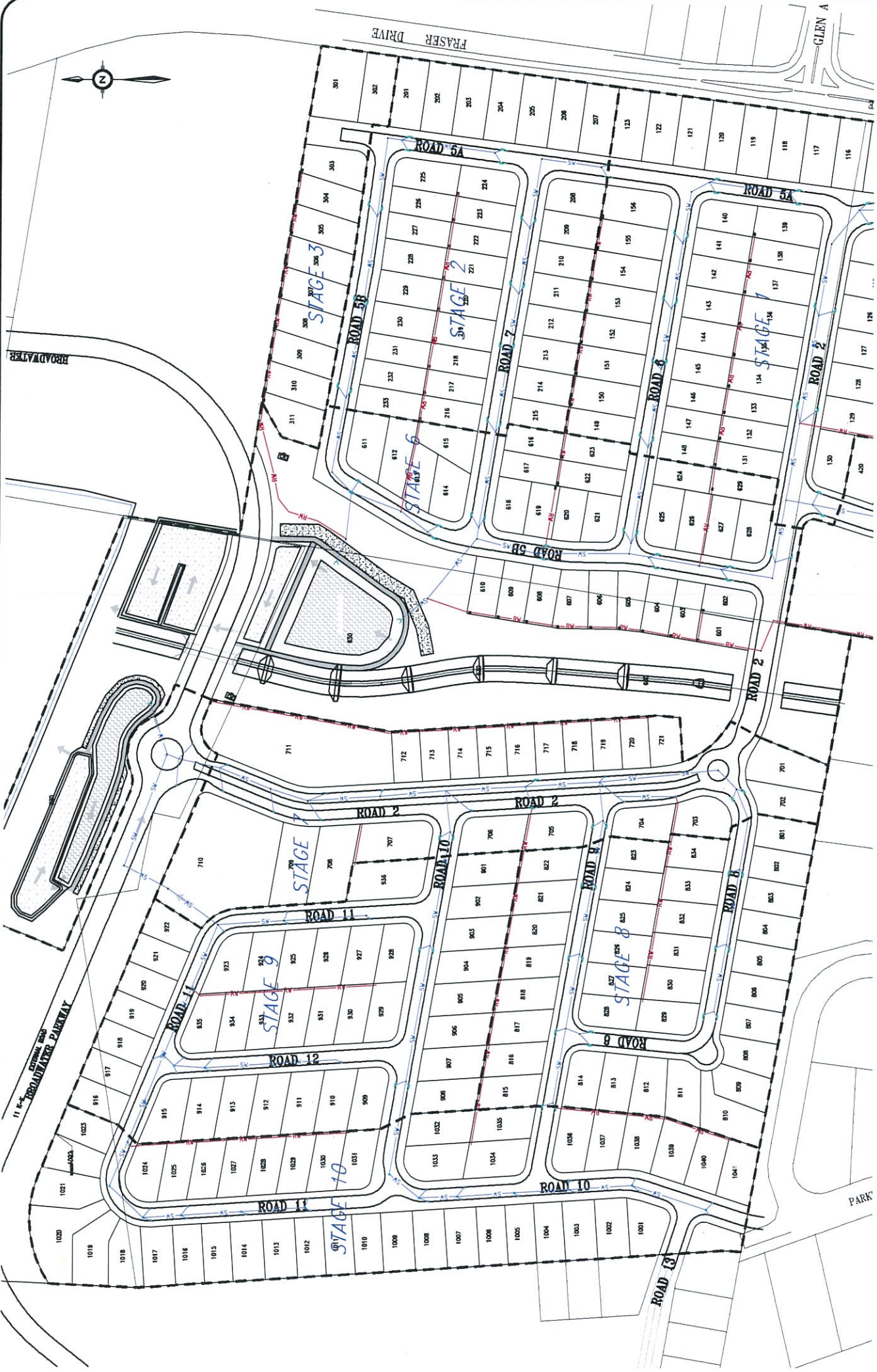
10 0 10 20 30 40 50m
 1 : 1000 (FULL SIZE)



D.A. PROJECT APPL. No. MP09-0166 **SK2741**
 09-374 17-11-2010 REVISION B
BradLees
 CONSULTING

METRICON (QLD) PTY LTD
 ALTITUDE 1 - FRASER DRIV. TERRANORA
 SEWER LAYOUT
 SHEET 2 OF 2





SK2742
 REVISION B
 D.A. PROJECT APPL. No. MP09-0166
 09-374
BradLees
 CONSULTING
 17-11-2010

METRICON (QLD) PTY LTD
 ALTITUDE 1 - FRASER DRV., TERRANORA
 STORMWATER LAYOUT
 SHEET 1 OF 2

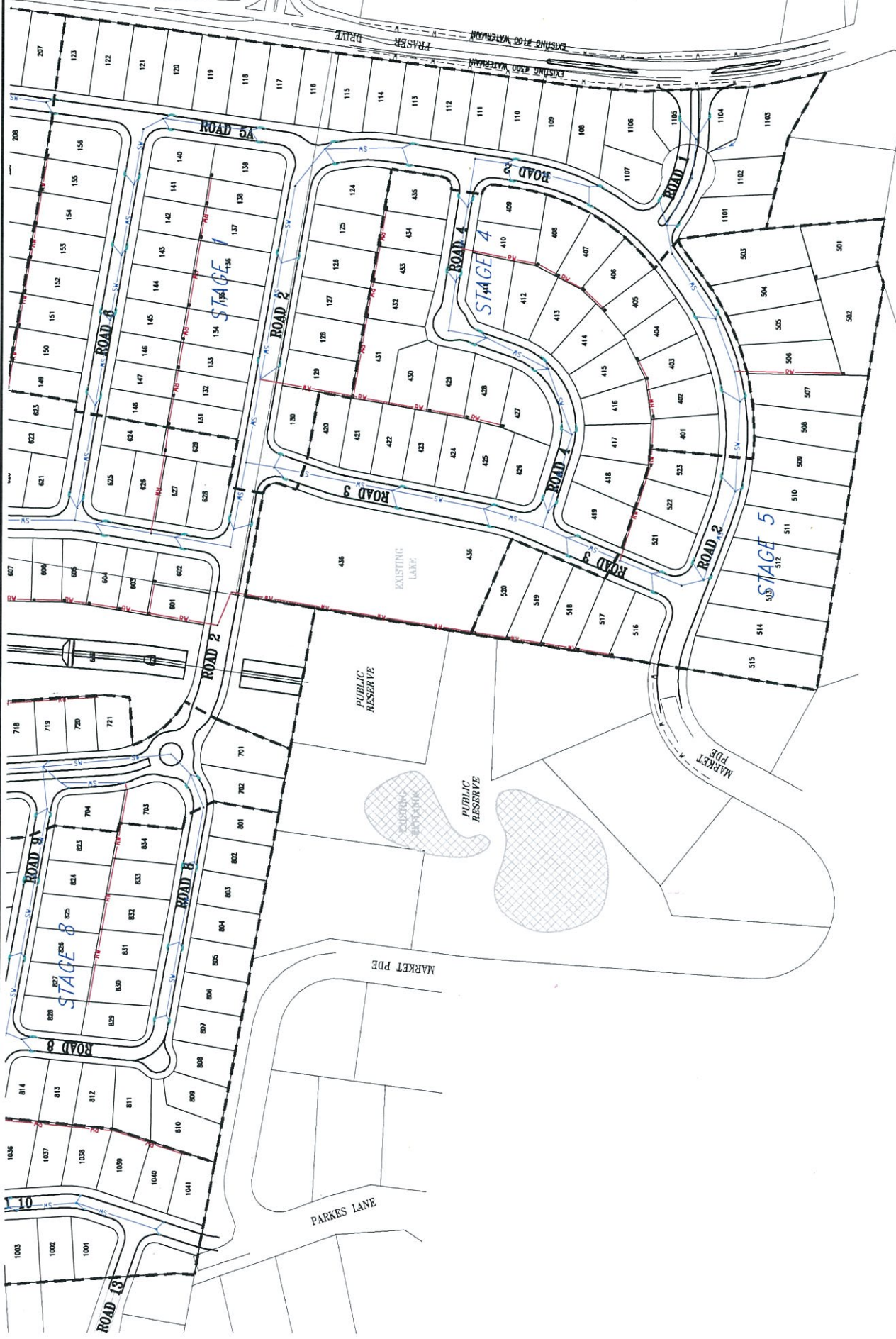




GLEN AYRE DRIVE

EXISTING #100 WATERMAIN
FRASER DRIVE
EXISTING #100 WATERMAIN

PARKES LANE



SK2743
REVISION B

D.A. PROJECT APPL. No. MP09-0166
09-374
17-11-2010

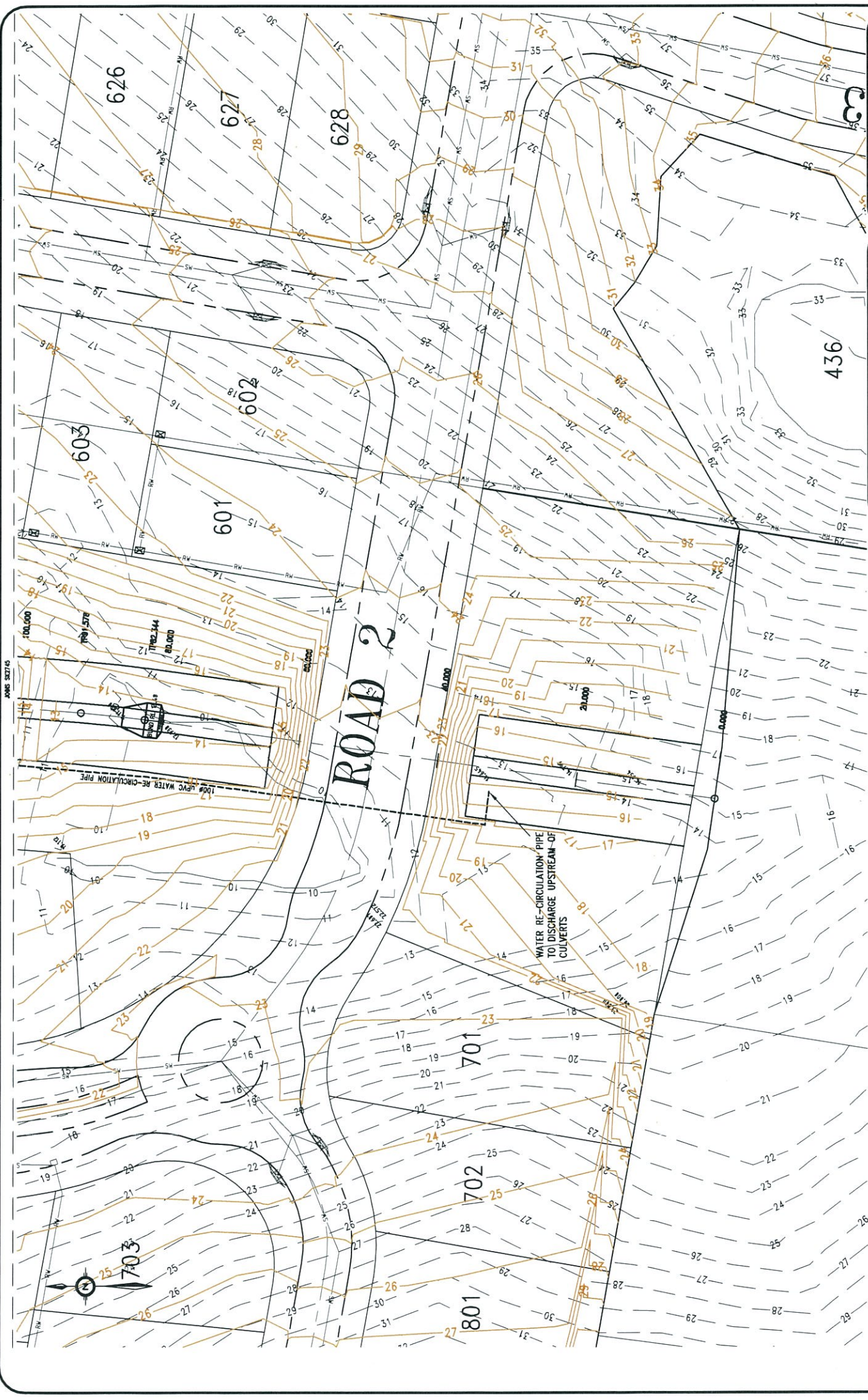
BradLees
CONSULTING

METRICON (QLD) PTY LTD
ALTIITUDE 1 - FRASER DRV. TERRANORA
STORMWATER LAYOUT
Sheet 2 of 2



APPENDIX 9

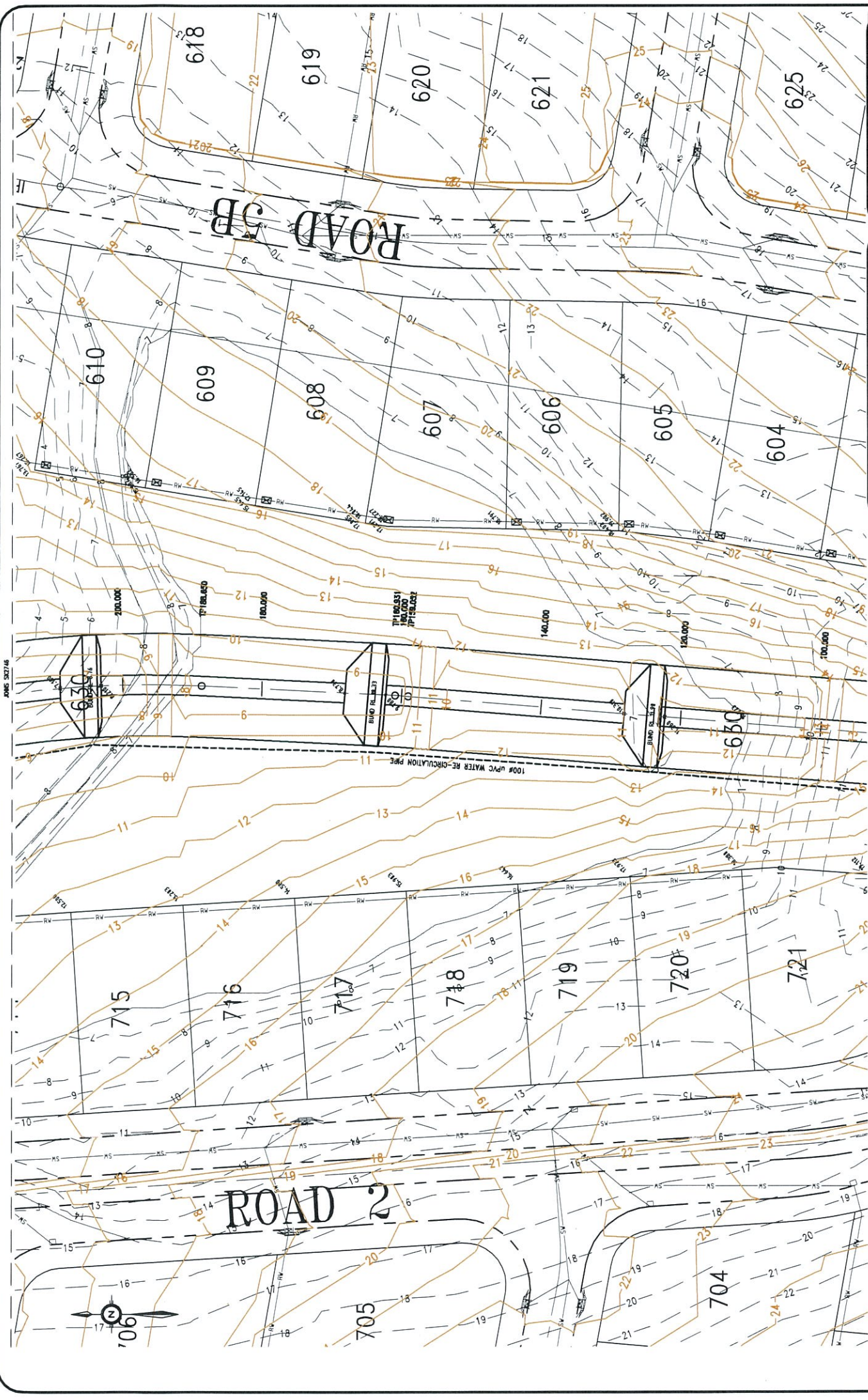
- 09-374 – SK 2744 Swale & Sediment Ponds Layout Plan: sheet 1 of 5
- 09-374 – SK 2745 Swale & Sediment Ponds Layout Plan: sheet 2 of 5
- 09-374 – SK 2746 Swale & Sediment Ponds Layout Plan: sheet 3 of 5
- 09-374 – SK 2747 Swale & Sediment Ponds Layout Plan: sheet 4 of 5
- 09-374 – SK 2748 Swale & Sediment Ponds Layout Plan: sheet 5 of 5
- 09-374 - SK 2749 Swale Longitudinal Section & Details
- 09-374 – SK 2750 Swale Cross Sections: Sheet 1 of 2
- 09-374 – SK 2751 Swale Cross Sections: Sheet 2 of 2
- 09-374 – SK 2752 Swale Earthworks Sections



D:\PROJECT APPL. No. M909-0166 SK27.44
 09-374 30-04-2010 REVISION A

METRICON (QLD) PTY LTD
ALTITUDE 1 - FRASER DRY, TERRANORA
SWALE AND SEDIMENT PONDS LAYOUT
SHEET 1 OF 5





D.A. PROJECT APPL. No. MPO9-0166 SK2745
 09-374 REVISION A
 30-JUL-2010
BradLees
 CONSULTING

METRICON (OLD) PTY LTD
 ALTITUDE 1 - FRASER DRY, TERRANORA
 SWALE AND SEDIMENT PONDS LAYOUT
 SHEET 2 OF 5

JMS 5/27/14

